

---

2019



**Site Recommendation Book**

Big Lots! 5264  
901 East Langsford Road  
Lees Summit MO 64063

**QID#** 19-49937

**Designer:**  
Brian Sowder

**Date**  
11-13-19

**CODE RESEARCH**



901 East Langsford Rd, Lee's Summit MO 64063

Municipality	City of Lee's Summit
Contact	Victoria Nelson 816-969-1200
Parcel Identification Number	61-240-18-05-00-0-00-000
Zoning	CP-2
Overlay District/Special District	NA

**Building**

1. QTY: 1
2. SF: 10% of building face
3. LETTER HEIGHT: 6'
4. LIGHTING: internal, halo or external indirect allowed
  - a. Cannot have pure white background
5. Cannot project more than 12" from face of wall
6. Cannot overlap or cover doors, windows or architectural details

**Monument Sign**

1. Tenant panel change does require a permit, unless it does not exceed 6 sf
  - a. Cannot have pure white background

**Sign Permit Applications**

1. Submit in person, mail or email to Victoria.Nelson@cityofls.net
2. LOA is required (see application for form)
3. Sign specifications, to scale, showing: exact copy, size, length, height, area, materials, color, lighting and type
  - a. All signs must be designed and constructed to withstand wind pressure of not less than 25 pounds per sf
4. Scaled building elevation(s) showing: building width, building height, façade area, and the exact sign location(s)
5. Photographs of the proposed sign location and the existing signs
6. Permit fees:
 

a. Permanent	\$100
b. Electric	\$100, plus min permit fee
c. Incidental	\$50
7. Approximately 7 business days to process application
8. Permit valid for 180 days

The area of a sign face is computed as the area within the smallest rectangle enclosing the limits of a sign face, or the combination of the areas of all such rectangles delimiting each sign face, together with any frame or material, texture, or color forming an integral

part of the sign face or used to differentiate the sign face from the structure upon which it is placed.

The sign face area does not include any of the following elements outside of the rectangle that delimits the sign face:

1. The structure, supports or uprights on which the sign face is placed, and
2. Any part of the sign structure that does not contain any message or idea and is purely structural or decorative in nature. This includes any base or frame of a monument sign

If the sign includes words, letters, figures, symbols, logos, fixtures, colors, or other design elements that routinely change from time to time, the sign face area includes the entire area within which:

1. The changeable copy is placed, and
2. Any frame or material, texture, or color forming an integral part of the sign face or used to differentiate the sign face from the structure upon which it is placed.

Any open space contained within the limits of the rectangle delimiting the sign face is included in computing the area of the sign face, sign face module, or sign structure

For multi-faced signs, when the sign face surfaces are parallel (back-to-back), or where the interior angle formed by the faces is 45 degrees or less, the area of the sign is the area of the largest side. For all other multi-faced signs, the area of the sign is the total area on all sides that can be viewed at one time from any angle.



125 HILLSIDE DRIVE • GREENVILLE SC 29607  
P 800 353 9132 • F 864 242 2204  
www.hiltondisplays.com

**QID 19-49937**

**JOB NAME**

Big Lots #5264

**LOCATION**

901 East Langsford Road  
Lees Summit MO 64063

**CUSTOMER CONTACT**

**SALESMAN / PM**

Kevin Liller

**DESIGNER**

Brian Sowder

**DWG. DATE**

11-13-19

**REV. DATE / REVISION**

2-21-20 / + RW

**SCALE**

**FILE**

2019/Big Lots/Locations/  
Lees Summit MO/19-49937/  
BL Lees Summit MO 19-49937

**DESIGN SPECIFICATIONS ACCEPTED BY:**

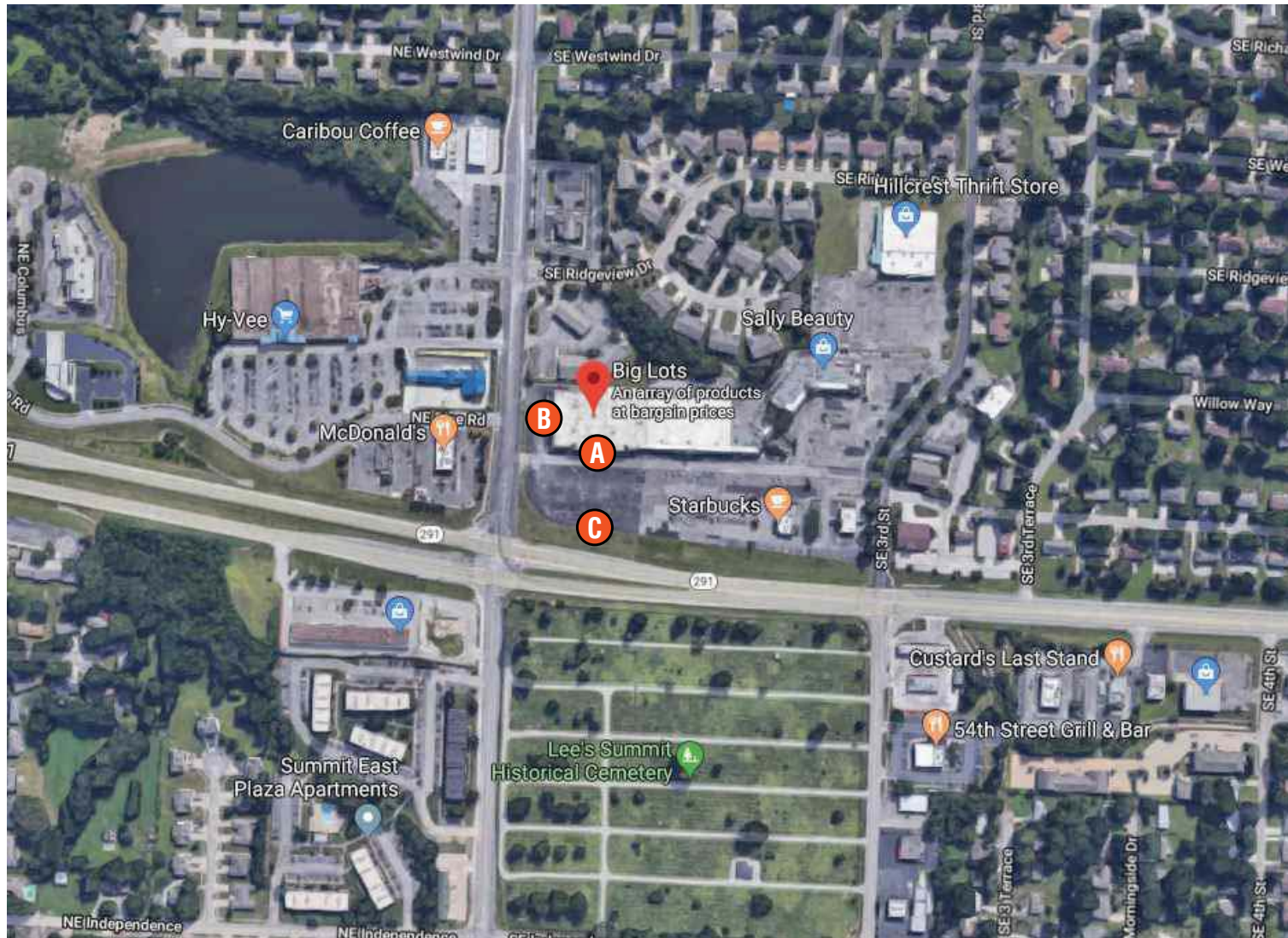
EST:	CLIENT:
SLS/PM:	LANDLORD:

THE INTENT OF THIS DRAWING IS TO SHOW A CONCEPTUAL REPRESENTATION OF THE PROPOSED SIGNAGE. DUE TO VARIATIONS IN PRINTING DEVICES AND SUBSTRATES, THE FINISHED PRODUCT MAY DIFFER SLIGHTLY FROM DRAWING.



**SITE PLAN**

- A** CHANNEL LETTERS
- B** CHANNEL LETTERS
- C** MONUMENT



**HILTON DISPLAYS**

125 HILLSIDE DRIVE • GREENVILLE SC 29607  
 P 800 353 9132 • F 864 242 2204  
 www.hiltondisplays.com

**QID 19-49937**

**JOB NAME**

Big Lots #5264

**LOCATION**

901 East Langsford Road  
 Lees Summit MO 64063

**CUSTOMER CONTACT**

**SALESMAN / PM**

Kevin Liller

**DESIGNER**

Brian Sowder

**DWG. DATE**

11-13-19

**REV. DATE / REVISION**

2-21-20 / + RW

**SCALE**

NOT TO SCALE

**FILE**

2019/Big Lots/Locations/  
 Lees Summit MO/19-49937/  
 BL Lees Summit MO 19-49937

**DESIGN SPECIFICATIONS ACCEPTED BY:**

EST:	CLIENT:
SLS/PM:	LANDLORD:

THE INTENT OF THIS DRAWING IS TO SHOW A CONCEPTUAL REPRESENTATION OF THE PROPOSED SIGNAGE. DUE TO VARIATIONS IN PRINTING DEVICES AND SUBSTRATES, THE FINISHED PRODUCT MAY DIFFER SLIGHTLY FROM DRAWING.





**ELEVATION**

- A CHANNEL LETTERS
- B CHANNEL LETTERS
- C MONUMENT

**EXISTING**

220'  
Building Length



**PROPOSED**



**HILTON DISPLAYS**

125 HILLSIDE DRIVE • GREENVILLE SC 29607  
P 800 353 9132 • F 864 242 2204  
www.hiltondisplays.com

**QID 19-49937**

**JOB NAME**

Big Lots #5264

**LOCATION**

901 East Langsford Road  
Lees Summit MO 64063

**CUSTOMER CONTACT**

**SALESMAN / PM**

Kevin Liller

**DESIGNER**

Brian Sowder

**DWG. DATE**

11-13-19

**REV. DATE / REVISION**

2-21-20 / + RW

**SCALE**

AS NOTED

**FILE**

2019/Big Lots/Locations/  
Lees Summit MO/19-49937/  
BL Lees Summit MO 19-49937

**DESIGN SPECIFICATIONS ACCEPTED BY:**

EST: CLIENT:

SLS/PM: LANDLORD:

THE INTENT OF THIS DRAWING IS TO SHOW A CONCEPTUAL REPRESENTATION OF THE PROPOSED SIGNAGE. DUE TO VARIATIONS IN PRINTING DEVICES AND SUBSTRATES, THE FINISHED PRODUCT MAY DIFFER SLIGHTLY FROM DRAWING.



**ELEVATION**

- A** CHANNEL LETTERS
- B** CHANNEL LETTERS
- C** MONUMENT

**EXISTING**

148'-4"  
Building Length



**PROPOSED**



**HILTON DISPLAYS**

125 HILLSIDE DRIVE • GREENVILLE SC 29607  
P 800 353 9132 • F 864 242 2204  
www.hiltondisplays.com

**QID 19-49937**

**JOB NAME**

Big Lots #5264

**LOCATION**

901 East Langsford Road  
Lees Summit MO 64063

**CUSTOMER CONTACT**

**SALESMAN / PM**

Kevin Liller

**DESIGNER**

Brian Sowder

**DWG. DATE**

11-13-19

**REV. DATE / REVISION**

2-21-20 / + RW

**SCALE**

AS NOTED

**FILE**

2019/Big Lots/Locations/  
Lees Summit MO/19-49937/  
BL Lees Summit MO 19-49937

**DESIGN SPECIFICATIONS ACCEPTED BY:**

EST:	CLIENT:
SLS/PM:	LANDLORD:

THE INTENT OF THIS DRAWING IS TO SHOW A CONCEPTUAL REPRESENTATION OF THE PROPOSED SIGNAGE. DUE TO VARIATIONS IN PRINTING DEVICES AND SUBSTRATES, THE FINISHED PRODUCT MAY DIFFER SLIGHTLY FROM DRAWING.

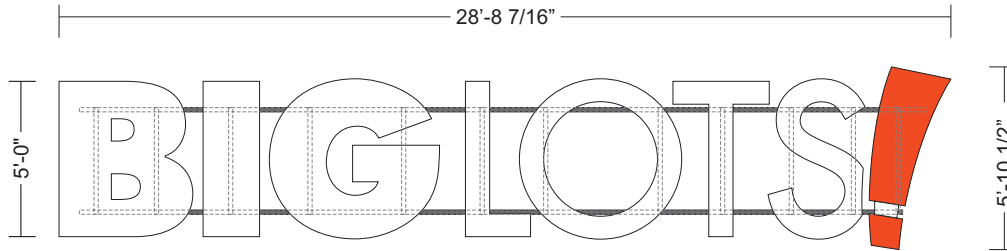


**5'-0" ILLUMINATED CHANNEL LETTERS - REMOTE**

**BL-60-RCL-HORIZ**

**BL-19-49937-2 (Frame)**

Qty. 1



**Front View**

Scale: 1/4" = 1' (11x17 Paper)

**SPECIFICATIONS**

**RETURNS:** PRE-FINISHED BLACK ALUMINUM / WHITE INTERIORS

**FACES:** 3/16" ACRYLIC

- BIGLOTS: 7328 WHITE

- EXCLAMATION: 2119 ORANGE

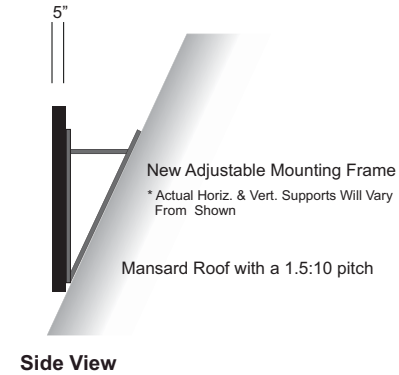
**TRIMCAP:** 1" STD BLACK

**ILLUMINATION:** SLOAN WHITE LEDS 6500K / 120V

**NOTES:**

- ALL WIRING UL APPROVED AND BARE LABEL

- NEW ALUMINUM FRAME PAINTED TO MATCH EXISTING FASCIA



**Side View**

**HILTON DISPLAYS**

125 HILLSIDE DRIVE • GREENVILLE SC 29607  
P 800 353 9132 • F 864 242 2204  
www.hiltondisplays.com

**QID 19-49937**

**JOB NAME**

Big Lots #5264

**LOCATION**

901 East Langsford Road  
Lees Summit MO 64063

**CUSTOMER CONTACT**

**SALESMAN / PM**

Kevin Liller

**DESIGNER**

Brian Sowder

**DWG. DATE**

11-13-19

**REV. DATE / REVISION**

2-21-20 / + RW

**SCALE**

AS NOTED

**FILE**

2019/Big Lots/Locations/  
Lees Summit MO/19-49937/  
BL Lees Summit MO 19-49937

**DESIGN SPECIFICATIONS ACCEPTED BY:**

EST:	CLIENT:
SLS/PM:	LANDLORD:

THE INTENT OF THIS DRAWING IS TO SHOW A CONCEPTUAL REPRESENTATION OF THE PROPOSED SIGNAGE. DUE TO VARIATIONS IN PRINTING DEVICES AND SUBSTRATES, THE FINISHED PRODUCT MAY DIFFER SLIGHTLY FROM DRAWING.



**3'-6" ILLUMINATED CHANNEL LETTERS - RACEWAY**

**BL-42-RWCL-HORIZ-BP**

Qty. 1



**HILTON DISPLAYS**  
 125 HILLSIDE DRIVE • GREENVILLE SC 29607  
 P 800 353 9132 • F 864 242 2204  
 www.hiltondisplays.com

**QID 19-49937**

**JOB NAME**

Big Lots #5264

**LOCATION**

901 East Langsford Road  
 Lees Summit MO 64063

**CUSTOMER CONTACT**

**SALESMAN / PM**

Kevin Liller

**DESIGNER**

Brian Sowder

**DWG. DATE**

11-13-19

**REV. DATE / REVISION**

2-21-20 / + RW

**SCALE**

AS NOTED

**FILE**

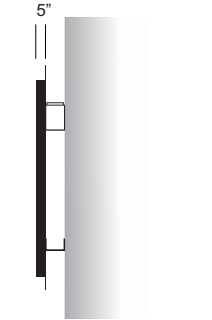
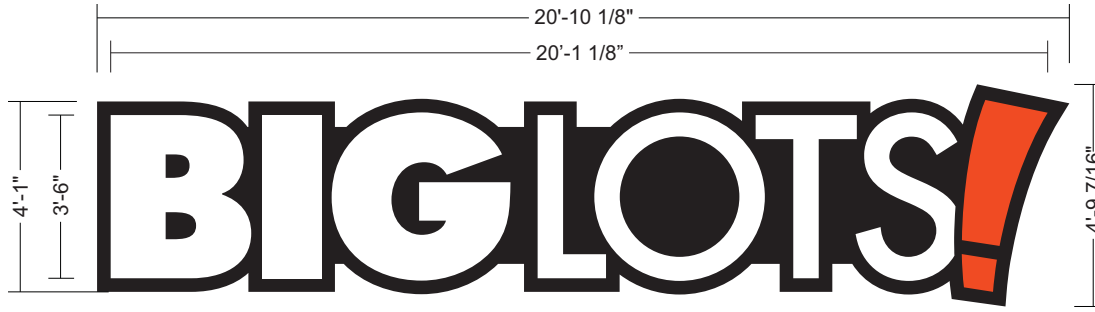
2019/Big Lots/Locations/  
 Lees Summit MO/19-49937/  
 BL Lees Summit MO 19-49937

**DESIGN SPECIFICATIONS ACCEPTED BY:**

EST: CLIENT:  
 SLS/PM: LANDLORD:

THE INTENT OF THIS DRAWING IS TO SHOW A CONCEPTUAL REPRESENTATION OF THE PROPOSED SIGNAGE. DUE TO VARIATIONS IN PRINTING DEVICES AND SUBSTRATES, THE FINISHED PRODUCT MAY DIFFER SLIGHTLY FROM DRAWING.

Underwriters Laboratories Inc.



**Front View**  
 SCALE: 3/8" = 1'-0" (11X17 PAPER)

**Side View**

**SPECIFICATIONS**

**RETURNS:** PRE-FINISHED BLACK ALUMINUM / WHITE INTERIORS

**FACES:** 3/16" ACRYLIC

- BIGLOTS: 7328 WHITE
- EXCLAMATION: 2119 ORANGE

**TRIMCAP:** 1" STD BLACK

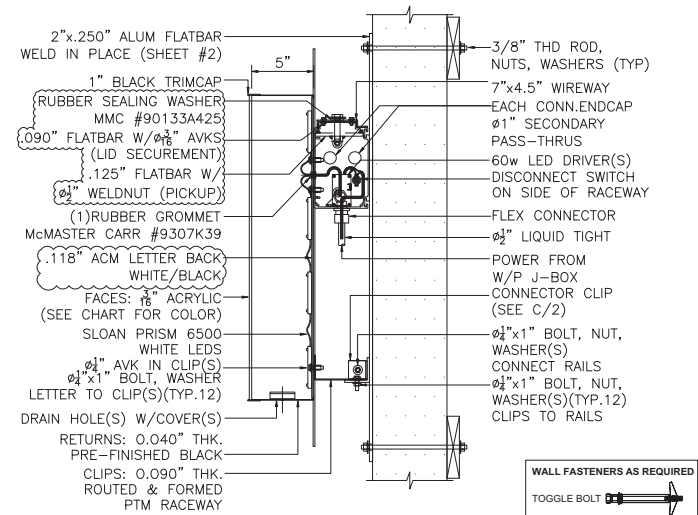
**ILLUMINATION:** SLOAN WHITE LEDS 6500K / 120V

**BACKGROUND PANEL:** 3MM BLACK ACM

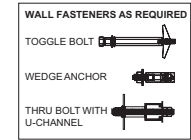
**RACEWAY:** ALUMINUM PAINTED WHITE

**NOTES:**

- ALL WIRING UL APPROVED AND BARE LABEL



**SECTION VIEW**  
 NOT TO SCALE

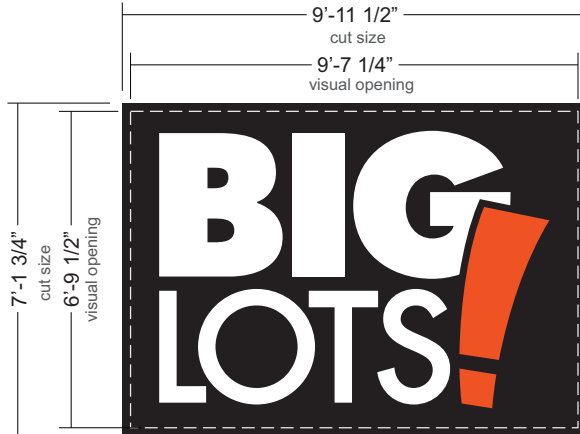




**D/F MONUMENT FACE REPLACEMENT**

**BL-19-49937-4**

Qty. 2



**Front View**

Scale: 1" = 1' (11x17 Paper)

**SPECIFICATIONS**

**FACES:** 3/16" WHITE POLYCARB W/ 1ST SURFACE VINYL

**GRAPHICS:** 3M 3630-22 BLACK BACKGROUND  
 3M 3630-44 ORANGE EXCLAMATION POINT  
 BIGLOTS SHOW THRU WHITE COPY

**NOTES:**

CABINET SIZE: 86 1/4" X 10'-0"

RETAINERS: 2 1/4"

**EXISTING**



**PROPOSED**



~~HILTON DISPLAYS~~

125 HILLSIDE DRIVE • GREENVILLE SC 29607  
 P 800 353 9132 • F 864 242 2204  
 www.hiltondisplays.com

**QID 19-49937**

**JOB NAME**

Big Lots #5264

**LOCATION**

901 East Langsford Road  
 Lees Summit MO 64063

**CUSTOMER CONTACT**

**SALESMAN / PM**

Kevin Liller

**DESIGNER**

Brian Sowder

**DWG. DATE**

11-13-19

**REV. DATE / REVISION**

2-21-20 / + RW

**SCALE**

**AS NOTED**

**FILE**

2019/Big Lots/Locations/  
 Lees Summit MO/19-49937/  
 BL Lees Summit MO 19-49937

**DESIGN SPECIFICATIONS ACCEPTED BY:**

EST: CLIENT:

SLS/PM: LANDLORD:

THE INTENT OF THIS DRAWING IS TO SHOW A CONCEPTUAL REPRESENTATION OF THE PROPOSED SIGNAGE. DUE TO VARIATIONS IN PRINTING DEVICES AND SUBSTRATES, THE FINISHED PRODUCT MAY DIFFER SLIGHTLY FROM DRAWING.

