



# LEE'S SUMMIT MISSOURI

## CODE MODIFICATION REQUEST (COMMERCIAL)

BUILDING/STRUCTURE NAME: Lee's Summit Medical Center MOB \_\_\_\_\_

PREMISE ADDRESS: 1980 SE Blue Parkway, Lee's Summit, MO 64063 \_\_\_\_\_

PERMIT NUMBER (if applicable): PRCOM20192572 \_\_\_\_\_

OWNER'S NAME: HCA - Lee's Summit Medical Center \_\_\_\_\_

TO: Director of Development Services

In accordance with the Lee's Summit Building Code, I wish to apply for a modification to one or more provisions of the code as I feel that the spirit and intent of the Lee's Summit Building Code are observed the public health, welfare and safety are assured. The following articulates my request for your review and action. (NOTE: ATTACH ANY ADDITIONAL INFORMATION NECESSARY)

We request a code modification to the 2010 ADA Standards for Accessible Design Section 604 Water Closets and Toilet Compartments. The medical office building has a Bariatric clinic as a tenant. The two restrooms in this clinic will have bariatric compliant toilets installed. These toilets are wider than standard toilets and are rated for a larger weight capacity (Refer to cutsheet attached). The modification we are requesting is to allow the center of the water closet to be located 24" from the side wall, versus the 16-18" indicated in the ADA guidelines. This added clearance will help to provide patients adequate space in the restrooms. The remainder of the building will provide water closets meeting the smaller required dimension. The total occupant load for the floor is 90 Occupants (13,497 SF / 150), thus requiring 3 female WC's and 3 male WC's (IBC 2018: Table 2902.1). The minimum number of fixtures required by code are met in the shared public restrooms in the building lobby, the additional restrooms within the bariatric clinic are in excess of the minimum requirement.

See attached for annotated A2.2 – FIRST FLOOR PLAN – AREA A & Bariatric Toilet Cutsheet.

SUBMITTED BY:

NAME: Rosemary Nelson – ACI Boland Architects\_\_

( ) OWNER (X) OWNER'S AGENT

ADDRESS: 1710 Wyandotte\_\_

Tel.#\_816-595-9547\_\_

CITY, STATE, ZIP: Kansas City, MO 64108\_\_

SIGNATURE: \_\_

---

TRACY DEISTER – MANAGER OF CODES ADMINISTRATION:

(X) APPROVAL ( ) DENIAL

SIGNATURE: 

DATE: 12-13-19

RYAN ELAM – DIRECTOR OF DEVELOPMENT SERVICES:

(X) APPROVED ( ) DENIED

SIGNATURE: 

DATE: 12-13-19

COMMENTS: \_\_\_\_\_

---

**A COPY MUST BE ATTACHED TO THE APPROVED PLANS ON THE JOB SITE**

4/24/19 N:\CODES ADMIN\Forms 2019



Seal of the State of Missouri  
Professional Engineer  
License No. 10000  
Date: 12/15/2019

**ACI**  
BOLANT  
ARCHITECT

17709 Woodland  
Suite 200  
St. Louis, MO 63143  
T: 314.763.1000

Architectural Firm  
Missouri City | St. Louis  
Professional Engineer  
License No. 10000

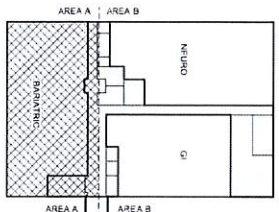
MEP CONSULTANT



Lankford  
ASSOCIATES  
17709 Woodland  
Suite 200  
St. Louis, MO 63143  
T: 314.763.1000

**LEES SUMMIT MEDICAL CENTER**  
MOB TI  
2100 SE BLUE PARKWAY  
LEES SUMMIT, MO 64063

Date: 8/27/22  
Job Number: 3-1903  
Checked By:  
Revision:  
Number: 3  
Date: 11/13/22  
Author: ASD



A2 FIRST FLOOR PLAN, AREA A, BARBATIC  
1/2" = 1'-0"  
NORTH

KEY PLAN, FIRST FLOOR  
1/2" = 1'-0"  
NORTH

A2  
17709 WOODLAND  
SUITE 200  
ST. LOUIS, MO 63143  
T: 314.763.1000





# Right Width™ FloWise® Elongated Right Height® Flushometer Toilet with Seat

VITREOUS CHINA



## Right Width™ FloWise® Elongated Right Height® Flushometer Toilet with Seat

- Floor mount elongated flushometer toilet with seat
- Vitreous china
- Tested to support static load of 2,000 lbs.(908 kg)
- High Efficiency, Low Consumption. Operates in the range of 1.28 gpf to 1.6 gpf (4.9 Lpf to 6.0 Lpf)
- Meets definition of HET (High Efficiency Toilet) when used with a 1.28 gpf high efficiency flush valve
- Wider footprint is ideal for retrofit installation
- 17" rim height for accessible applications
- Elongated, Open Front, Right Width™ seat (less toilet seat lid) included
- Fully glazed 2" trapway
- 10" or 12" Rough-in
- 1-1/2" inlet spud
- 2 bolt caps

### 3641.001 Top spud

#### System MaP® Score:

- 1,000 grams of miso @ 1.6 gpf or 1.28 gpf when used with an American Standard flush valve

\* Maximum Performance (MaP) testing performed by IAPMO R&T Lab. MaP Report conducted by Veritec Consulting, Inc. and Koeller and Company.

#### Nominal Dimensions:

718 x 432 x 434mm  
(28-1/4" x 17" x 17-1/8")

Recommended working pressure – between 30 psi at valve when flushing and 80 psi static

Fixture and Seat only, flush valve by others

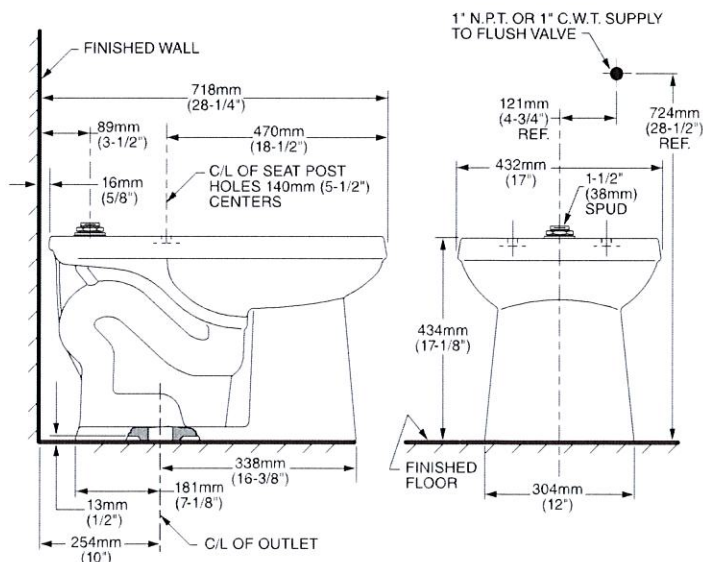
#### Compliance Certifications -

#### Meets or Exceeds the Following Specifications:

- ASME A112.19.2 / CSA B45.1 for Vitreous China Fixtures

#### To Be Specified:

- ☐ Color: ☐ White
- ☐ Flushometer Valve:
  - ☐ 1.6 gpf:
    - ☐ Sensor-Operated: American Standard Selectronic® DC Power #6065.161.002 (Top Spud)
    - ☐ Manual: American Standard #6047.161.002 (Top Spud)
  - ☐ 1.28 gpf:
    - ☐ Sensor-Operated: American Standard Selectronic® DC Power #6065.121.002 (Top Spud)
    - ☐ Manual: American Standard #6047.121.002 (Top Spud)



#### NOTES:

THIS TOILET IS DESIGNED TO ROUGH-IN AT A MINIMUM DIMENSION OF 254MM (10") FROM FINISHED WALL TO C/L OF OUTLET. TO COMPLY WITH AREA CODE GOVERNING THE HEIGHT OF VACUUM BREAKER ON FLUSH VALVE, THE PLUMBER MUST VERIFY DIMENSIONS SHOWN FOR SUPPLY ROUGHING. FLUSH VALVE NOT INCLUDED AND MUST BE ORDERED SEPARATELY.

**IMPORTANT:** Dimensions of fixtures are nominal and may vary within the range of tolerances established by ANSI Standard A112.19.2. These measurements are subject to change or cancellation. No responsibility is assumed for use of superseded or voided pages.



MEETS THE AMERICANS WITH DISABILITIES ACT GUIDELINES AND ANSI A117.1 REQUIREMENTS FOR ACCESSIBLE AND USABLE BUILDING FACILITIES - CHECK LOCAL CODES.



ADA  
COMPLIANT



When used with  
1.28 gpf  
toilet flush valves



WATER  
EFFICIENT