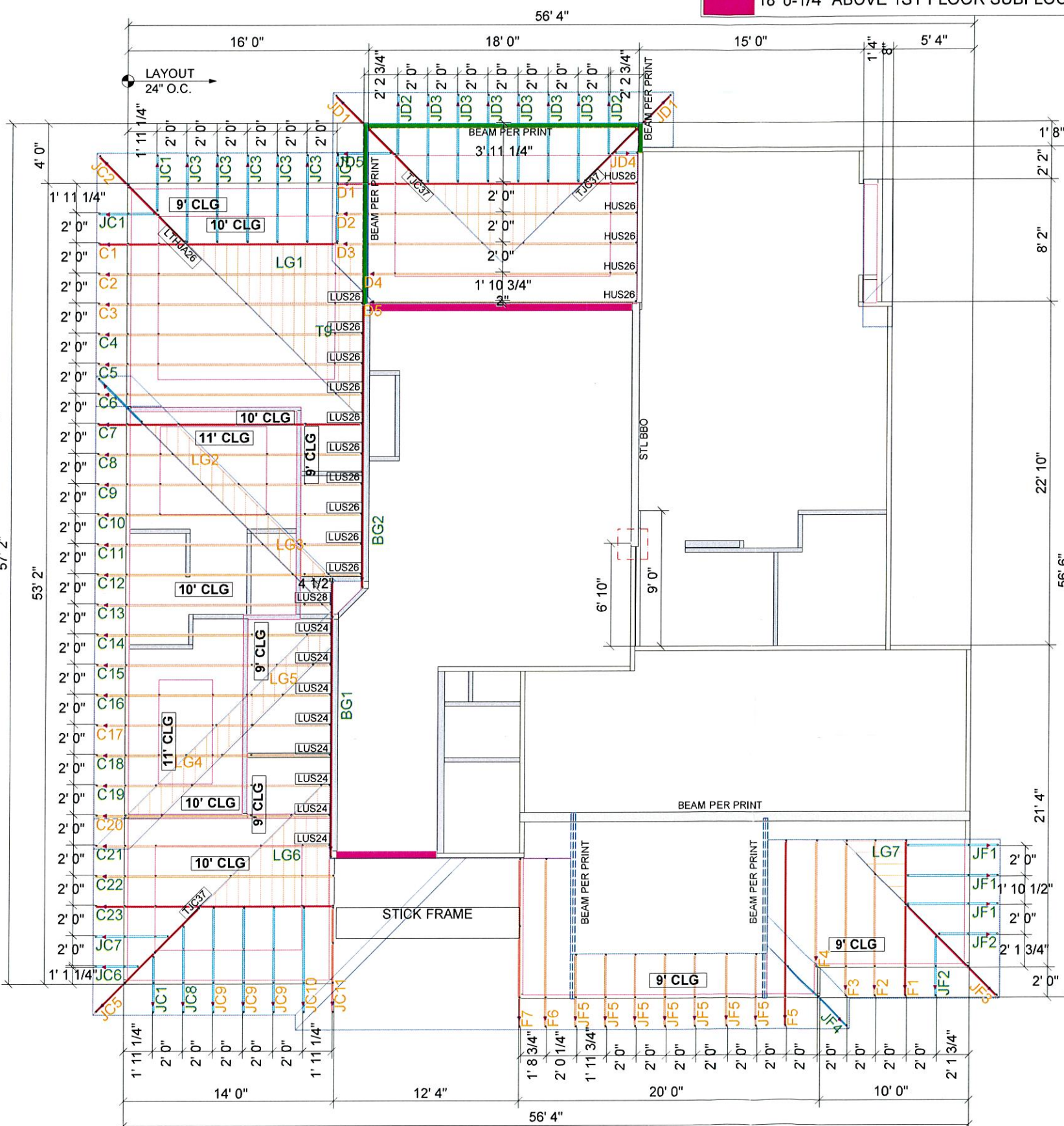


1. Trusses shall be installed in a safe manner meeting all code, local, OSHA, TPI, and BCSI Specifications. Failure to follow these specifications may result in injury or death.
2. Buildings under construction are vulnerable to high winds and present a possible safety hazard. The Contractor is responsible for recognizing adverse weather conditions and shall take appropriate action to prevent injury or death.
3. **BCSI INSTRUCTIONS SHALL BE FOLLOWED:**
 - BCSI-B1 = Safe Truss Handling and Installation
 - BCSI-B2 = Installation and Temporary Restraint
 - BCSI-B3 = Permanent Restraint
 - BCSI-B4 = Safe Construction Loading
 - BCSI-B5 = Truss Damage and Modification Guidelines
 - BCSI-B7 = Floor Truss Installation
 - BCSI-B8 = Toe-Nailed Connections
 - BCSI-B9 = Multi-PLY Girders
 - BCSI-B10 = Post Frame Truss Installation
 - BCSI-B11 = Fall Protection
4. Follow TPI Requirements for Long Span Trusses (>60').



18' 0-1/4" ABOVE 1ST FLOOR SUBFLOOR

JOB No.	2091248
DESCRIPTION	ROESER HOMES LLC
JOB ADDRESS	1444 WINTERSET VALLEY
CITY	LEE'S SUMMIT, MO
DESIGNER	Gustavo RAMSO
DATE	9/27/2019



PAGE
1 of 1