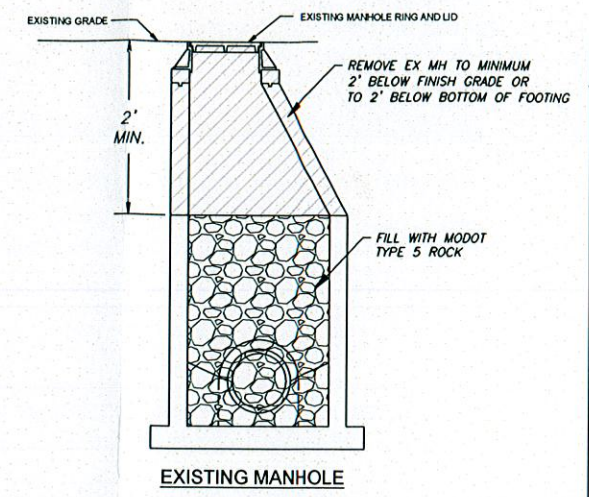
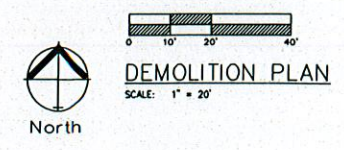
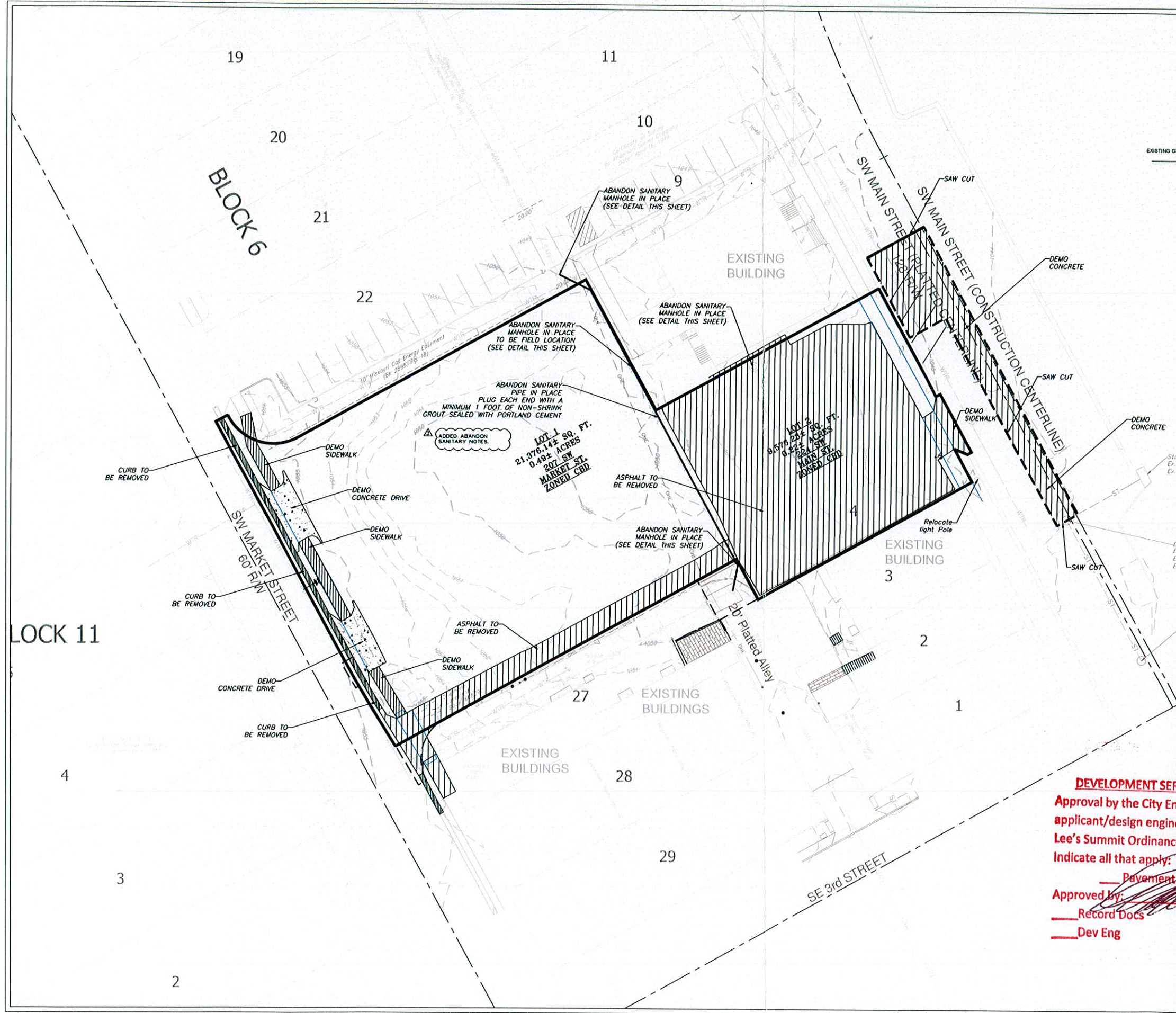


Precom 2019 1085



Storm Inlet
Ex. Top=1043.59
Ex. FL Out (SW) 1038.99 15" RCP

Ex. Storm MH
Ex. Top=1043.97
Ex. FL In (NE) 1038.53 15" RCP
Ex. FL Out (SE) 1038.35 15" RCP

Ex. Storm MH
Ex. Top=1043.20
Ex. FL In (NW) 1037.67 15" RCP
Ex. FL In (E) 1037.60 18" RCP
Ex. FL Out (S) 1034.10 18" RCP

*Memo to 5/29/19
File: This is for abandonment of sanitary only in order to obtain foundation only permit*

CITY OF LEE'S SUMMIT
DEVELOPMENT SERVICES - DEVELOPMENT ENGINEERING GROUP
Approval by the City Engineer, or designee, does not release the applicant/design engineer from responsibilities to comply with all City of Lee's Summit Ordinances and sound engineering/construction practices. Indicate all that apply: ☒ Erosion Control ☒ Water Main ☒ Pavement ☒ Sanitary Sewer ☒ Storm Sewer
Approved by: *[Signature]* Date: *5/28/19*
☒ Record Docs ☒ FE Insp ☒ Reviewer
☒ Dev Eng ☒ Contractor ☒ IT Review

ENGINEERING SOLUTIONS
ENGINEERING & SURVEYING
50 SE 30TH STREET
LEE'S SUMMIT, MO 64082
P: 816 623-9888 F: 816 623-9849

Professional Registration
Missouri
Engineering 200602188-D
Surveying 200600319-D
Kansas
Engineering E-1895
Surveying LS-218
Oklahoma
Engineering 6254
Nebraska
Engineering CA0821

Construction Plans for:
Reece Nichols
Lee's Summit, Jackson County, Missouri

Project: LINDSAY AND NICHOLS LAND
Issue Date: January 28, 2019

Demolition Plan
Construction Plans for:
Reece Nichols
Lee's Summit, Jackson County, Missouri

Matthew J. Schlicht
MO PE 2006019708
KS PE 19071
OK PE 25226

REVISIONS
Revised 4/2/19
Revised 5/8/19
Revised 5/21/19

C.010