



construction managers

general contractors

design builders

**SUBMITTAL REVIEW**  
**Project # 417 The Residences at Echelon**

Date: September 29, 2017

Submittal Number: 33-4000-07-a  
Storm Nyoplast Inlets

Sequence Number: 14

Subcontractor: Kat Excavation  
Bart Fisher

Submit To: NSPJ Architects  
Tim Hauschild

SUBMITTAL FOR APPROVAL	
Job Name/No: <u>417 The Residences at Echelon</u>	
<input checked="" type="checkbox"/> REVIEWED	<input type="checkbox"/> REVISE & RESUBMIT
<input type="checkbox"/> REVIEWED & NOTED	<input type="checkbox"/> REJECTED
<small>Submittal received for general compliance with the Contract Documents. Contractor's review does not relieve sub/vendor of responsibility for dimension, quantities, accuracy or completion of submittals or from any responsibilities required by terms and conditions of Subcontract/PO with Luke Draily Construction Co., Inc.. Sub/Vendors shall follow all manufacturer installation instructions. Installing contractor shall be responsible to coordinate with trades for hookup, supports, routing, etc.</small>	
By: <u>JDW</u>	Date: _____

Engineering Solutions	Shop Drawing Review
Project: <u>RAS</u>	Date: <u>9/27/17</u>
Submittal #: <u>Storm Nyoplast</u>	By: <u>MJS</u>
<input type="checkbox"/> APPROVED	<input type="checkbox"/> REJECTED
<input checked="" type="checkbox"/> APPROVED AS NOTED	



# **Drain Basin Production forms**

## **For submittal and approval**



**Project:** The Residence at Echelon // Quote Q-03261

**Reviewed by:** \_\_\_\_\_

**Approved by:** \_\_\_\_\_

**Date:** \_\_\_\_\_

**\*All Nyloplast production forms are an interpretation of submitted information;  
final responsibility for accuracy of all items manufactured belongs to the customer  
and signature on returned cover sheet to Nyloplast indicates approval**

# Submittal Form

Drain Basins  
Curb Inlet Structures  
Road & Hwy. Structures

Order #

Job Name The Residence at Echelon Date 9/13/2017

Drawing # 7-2 Customer Initial

Drain Basin Size 24 Grate Style STD

## Accessories

Inserta-Tee ® (qty/size)

Flexstorm™ Catch-It

FX ☐ FXO ☐

FXP ☐

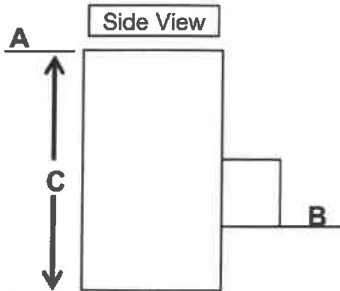
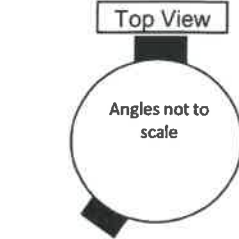
Flexstorm™ PURE

PC ☐ PCP ☐

## \*Notes

VERIFY PIPE TYPE; 24"  
22.5 DEGREE BEND  
REQUIRED - BY OTHERS

\*Required Sump Depths:  
6" - 8" - 24" Basins  
10" - 30" Basins



(For Roll Curb Inlet, Left or Right flow) ☐ Left ☐ Right

	Stub Size	Location	Type of Pipe
B#1	24	0	N12
B#2	24	210	N12
B#3			
B#4			

NOTE: OUTFLOW PIPE LOCATED AT ZERO DEGREES

A) Rim Elevation  
(Plans) (FT)

A) 1006.75  
C) 97.2

B) Pipe Invert Elevations

Plans (FT) Production (IN)

B#1 999.15 91.2  
B#2 999.4 88.2

C) Basin Height (IN)\*

Job Name The Residence at Echelon Date 9/13/2017

Drawing # 7-3 Customer Initial

Drain Basin Size 24 Grate Style STD

## Accessories

Inserta-Tee ® (qty/size)

Flexstorm™ Catch-It

FX ☐ FXO ☐

FXP ☐

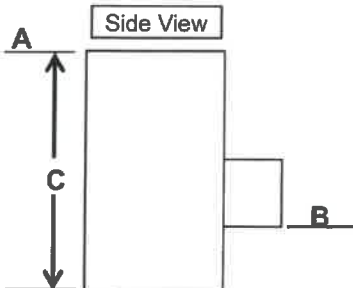
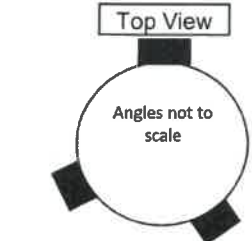
Flexstorm™ PURE

PC ☐ PCP ☐

## \*Notes

VERIFY PIPE TYPE; 15"  
11.25 DEGREE BEND  
REQUIRED - BY OTHERS

\*Required Sump Depths:  
6" - 8" - 24" Basins  
10" - 30" Basins



(For Roll Curb Inlet, Left or Right flow) ☐ Left ☐ Right

	Stub Size	Location	Type of Pipe
B#1	24	0	N12
B#2	18	152	N12
B#3	15	236	N12
B#4			

NOTE: OUTFLOW PIPE LOCATED AT ZERO DEGREES

A) Rim Elevation  
(Plans) (FT)

A) 1006.25  
C) 84

B) Pipe Invert Elevations

Plans (FT) Production (IN)

B#1 999.75 78  
B#2 1000 75  
B#3 1002 51  
B#4

C) Basin Height (IN)\*

NOTE: Drawings need to be Complete. This product is made to order and non-Refundable

NYLOPLAST: 3130 Verona Ave. Buford, GA 30518. (866) 888-8479

Nyloplast®, InsertaTee®, Flexstorm™ are registered trademarks of Advanced Drainage Systems®

Production order forms are based on interpretations of provided storm details.  
Customer is responsible for confirmation of information and final approval of order form.

## Submittal Form

Drain Basins  
Curb Inlet Structures  
Road & Hwy. Structures

Order #

Job Name The Residence at Echelon Date 9/13/2017

Drawing # 8-11 Customer Initial

Drain Basin Size 24 Grate Style STD

## Accessories

Inserta-Tee® (qty/size)

Flexstorm™ Catch-It

FX ☐ FXO ☐FXP ☐

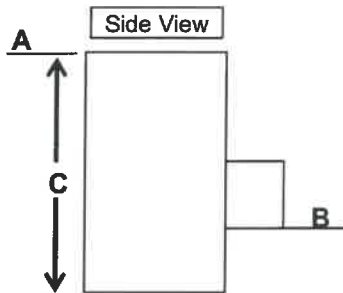
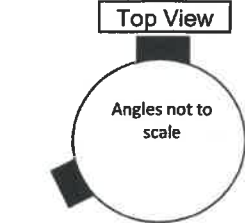
Flexstorm™ PURE

PC ☐ PCP ☐

## \*Notes

VERIFY PIPE TYPE

HDPE

\*Required Sump Depths:  
6" - 8" - 24" Basins  
10" - 30" Basins(For Roll Curb Inlet, Left or Right flow) ☐ Left ☐ Right

	Stub Size	Location	Type of Pipe
B#1	18	0	N12
B#2	15	235	N12
B#3			
B#4			

NOTE: OUTFLOW PIPE LOCATED AT ZERO DEGREES

A) Rim Elevation  
(Plans) (FT)B) Pipe Invert Elevations  
Plans (FT)

Production (IN)

A) 1020.5	B#1	1015.25	63
	B#2	1015.2	63.6
C) 69	B#3	1015.50	
	B#4		

C) Basin Height (IN)\*

Job Name The Residence at Echelon Date 9/13/2017

Drawing # 8-12 Customer Initial

Drain Basin Size 24 Grate Style STD

## Accessories

Inserta-Tee® (qty/size)

Flexstorm™ Catch-It

FX ☐ FXO ☐FXP ☐

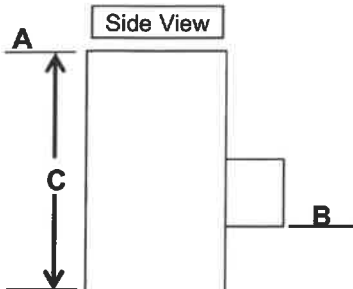
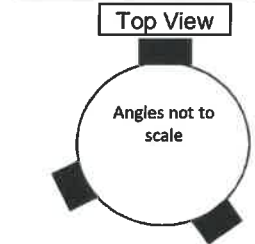
Flexstorm™ PURE

PC ☐ PCP ☐

## \*Notes

VERIFY PIPE TYPE; 15" 30  
DEGREE BEND REQUIRED  
- BY OTHERS

HDPE

\*Required Sump Depths:  
6" - 8" - 24" Basins  
10" - 30" Basins(For Roll Curb Inlet, Left or Right flow) ☐ Left ☐ Right

	Stub Size	Location	Type of Pipe
B#1	15	0	N12
B#2	15	163	N12
B#3	15	240	N12
B#4			

NOTE: OUTFLOW PIPE LOCATED AT ZERO DEGREES

A) Rim Elevation  
(Plans) (FT)B) Pipe Invert Elevations  
Plans (FT)

Production (IN)

A) 1020.5	B#1	1015.65	58.2
	B#2	1015.9	55.2
C) 64.2	B#3	1015.9	55.2
	B#4		

C) Basin Height (IN)\*

NOTE: Drawings need to be Complete. This product is made to order and non-Refundable

NYLOPLAST: 3130 Verona Ave. Buford, GA 30518. (866) 888-8479

Nyloplast®, InsertaTee®, Flexstorm™ are registered trademarks of Advanced Drainage Systems®

Production order forms are based on interpretations of provided storm details.  
Customer is responsible for confirmation of information and final approval of order form.

## Submittal Form

Drain Basins  
Curb Inlet Structures  
Road & Hwy. Structures

Order #

Job Name The Residence at Echelon Date 9/13/2017  
 Drawing # 8-13 Customer Initial

Drain Basin Size 24 Grate Style STD

## Accessories

Inserta-Tee® (qty/size)

Flexstorm™ Catch-It

FX ☐ FXO ☐FXP ☐

Flexstorm™ PURE

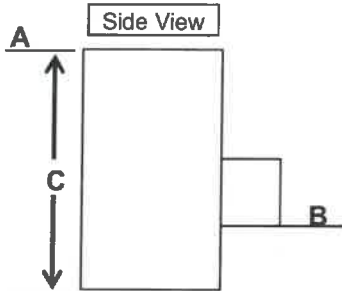
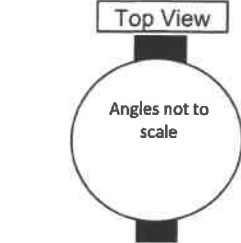
PC ☐ PCP ☐

## \*Notes

VERIFY PIPE TYPE

HDPE

\*Required Sump Depths:  
 6" - 8" - 24" Basins  
 10" - 30" Basins

(For Roll Curb Inlet, Left or Right flow) ☐ Left ☐ Right

	Stub Size	Location	Type of Pipe
B#1	15	0	N12
B#2	15	180	N12
B#3			
B#4			

NOTE: OUTFLOW PIPE LOCATED AT ZERO DEGREES

A) Rim Elevation  
(Plans) (FT)

A) 1020.5

C) 57.6

B) Pipe Invert Elevations

Plans (FT)

B#1 1016.2

B#2 1016.45

Production (IN)

51.6

48.6

C) Basin Height (IN)\*

Job Name The Residence at Echelon Date 9/13/2017  
 Drawing # 8-14 Customer Initial

Drain Basin Size 24 Grate Style STD

## Accessories

Inserta-Tee® (qty/size)

Flexstorm™ Catch-It

FX ☐ FXO ☐FXP ☐

Flexstorm™ PURE

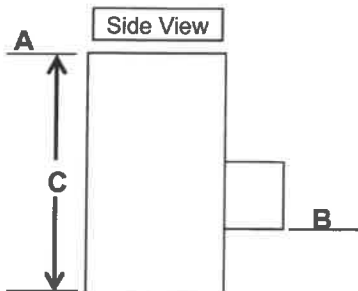
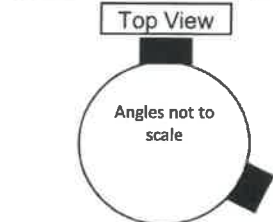
PC ☐ PCP ☐

## \*Notes

VERIFY PIPE TYPE; VERIFY  
 DS PIPE INVERT, SIZE &  
 TYPE

HDPE

\*Required Sump Depths:  
 6" - 8" - 24" Basins  
 10" - 30" Basins

(For Roll Curb Inlet, Left or Right flow) ☐ Left ☐ Right

	Stub Size	Location	Type of Pipe
B#1	15	0	N12
B#2	6-10"	112	N12
B#3			
B#4			

NOTE: OUTFLOW PIPE LOCATED AT ZERO DEGREES

A) Rim Elevation  
(Plans) (FT)

A) 1020.5

C) 51

B) Pipe Invert Elevations

Plans (FT)

B#1 1016.75

B#2 1017.25

Production (IN)

45

39

C) Basin Height (IN)\*

NOTE: Drawings need to be Complete. This product is made to order and non-Refundable

NYLOPLAST: 3130 Verona Ave. Buford, GA 30518. (866) 888-8479

Nyloplast®, InsertaTee®, Flexstorm™ are registered trademarks of Advanced Drainage Systems®

Production order forms are based on interpretations of provided storm details.  
 Customer is responsible for confirmation of information and final approval of order form.



Q-03261

## Nyloplast Storm Drainage Systems

Prepared by  
Ann Matthew

## Submittal Form

Drain Basins  
Curb Inlet Structures  
Road & Hwy. Structures

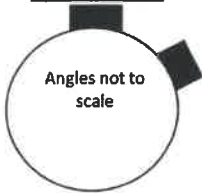
Order #

Job Name The Residence at Echelon Date 9/13/2017  
 Drawing # 9-1 Customer Initial

Drain Basin Size 24 Grate Style STD

## Accessories

Top View

(For Roll Curb Inlet, Left or Right flow) ☐ Left ☐ Right

	Stub Size	Location	Type of Pipe
B#1	15	0	N12
B#2	15	77	N12
B#3			
B#4			

Inserta-Tee® (qty/size)

Flexstorm™ Catch-It

FX ☐ FXO ☐FXP ☐

Flexstorm™ PURE

PC ☐ PCP ☐

## \*Notes

VERIFY PIPE TYPE

HDPE

\*Required Sump Depths:  
 6" - 8" - 24" Basins  
 10" - 30" Basins

NOTE: OUTFLOW PIPE LOCATED AT ZERO DEGREES

A) Rim Elevation  
(Plans) (FT)

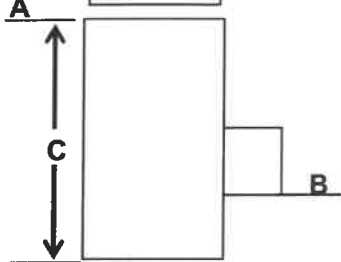
B) Pipe Invert Elevations

Plans (FT) Production (IN)

A) 1020.75	B#1	1016.25	54
	B#2	1016.5	51
C) 60	B#3		
	B#4		

C) Basin Height (IN)\*

Side View

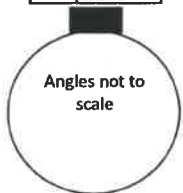


Job Name The Residence at Echelon Date 9/13/2017  
 Drawing # 9-2 Customer Initial

Drain Basin Size 24 Grate Style STD

## Accessories

Top View

(For Roll Curb Inlet, Left or Right flow) ☐ Left ☐ Right

	Stub Size	Location	Type of Pipe
B#1	15	0	N12
B#2			
B#3			
B#4			

Inserta-Tee® (qty/size)

Flexstorm™ Catch-It

FX ☐ FXO ☐FXP ☐

Flexstorm™ PURE

PC ☐ PCP ☐

## \*Notes

VERIFY PIPE TYPE

HDPE

\*Required Sump Depths:  
 6" - 8" - 24" Basins  
 10" - 30" Basins

NOTE: OUTFLOW PIPE LOCATED AT ZERO DEGREES

A) Rim Elevation  
(Plans) (FT)

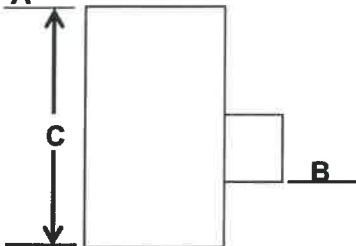
B) Pipe Invert Elevations

Plans (FT) Production (IN)

A) 1020.5	B#1	1017	42
	B#2		
C) 48	B#3		
	B#4		

C) Basin Height (IN)\*

Side View



NOTE: Drawings need to be Complete. This product is made to order and non-Refundable

NYLOPLAST: 3130 Verona Ave. Buford, GA 30518. (866) 888-8479

Nyloplast®, InsertaTee®, Flexstorm™ are registered trademarks of Advanced Drainage Systems®

Production order forms are based on interpretations of provided storm details.  
 Customer is responsible for confirmation of information and final approval of order form.

## Submittal Form

Drain Basins  
Curb Inlet Structures  
Road & Hwy. Structures

Order #

Job Name The Residence at Echelon

Date 9/13/2017

Drawing # 14-2

Customer Initial

Drain Basin Size 24

Grate Style STD

## Accessories

Top View

Angles not to  
scale(For Roll Curb Inlet, Left or Right flow) ☐ Left ☐ Right

Stub Size

Location

Type of Pipe

B#1

15

0

N12

B#2

6-151

251

N12

B#3

151

B#4

Inserta-Tee ® (qty/size)

Flexstorm™ Catch-It

FX ☐FXO ☐FXP ☐

Flexstorm™ PURE

PC ☐PCP ☐

## \*Notes

VERIFY PIPE TYPE; VERIFY  
DS PIPE SIZE/ TYPE &  
INVERT HDPE

NOTE: OUTFLOW PIPE LOCATED AT ZERO DEGREES

A) Rim Elevation  
(Plans) (FT)

B) Pipe Invert Elevations

Plans (FT) Production (IN)

A) 1008

B#1

1003

60

C) 66

B#2

1003.5

54

C) Basin Height (IN)\*

\*Required Sump Depths:  
6" - 8" - 24" Basins  
10" - 30" Basins

Job Name The Residence at Echelon

Date 9/13/2017

Drawing # 16-1

Customer Initial

Drain Basin Size 24

Grate Style STD

## Accessories

Top View

Angles not to  
scale(For Roll Curb Inlet, Left or Right flow) ☐ Left ☐ Right

Stub Size

Location

Type of Pipe

B#1

15

0

N12

B#2

15

119

N12

B#3

15

225

N12

B#4

Inserta-Tee ® (qty/size)

Flexstorm™ Catch-It

FX ☐FXO ☐FXP ☐

Flexstorm™ PURE

PC ☐PCP ☐

## \*Notes

VERIFY PIPE TYPE

HDPE

A) Rim Elevation  
(Plans) (FT)

B) Pipe Invert Elevations

Plans (FT) Production (IN)

A) 1019.75

B#1

1013.87

70.56

C) 76.56

B#2

1014.37

64.56

C) Basin Height (IN)\*

\*Required Sump Depths:  
6" - 8" - 24" Basins  
10" - 30" Basins

NOTE: Drawings need to be Complete. This product is made to order and non-Refundable

NYLOPLAST: 3130 Verona Ave. Buford, GA 30518. (866) 888-8479

Nyloplast®, InsertaTee®, Flexstorm™ are registered trademarks of Advanced Drainage Systems®

Production order forms are based on interpretations of provided storm details.  
Customer is responsible for confirmation of information and final approval of order form.

## Submittal Form

Drain Basins  
Curb Inlet Structures  
Road & Hwy. Structures

Order #

Job Name The Residence at Echelon Date 9/13/2017  
 Drawing # 16-2 Customer Initial

Drain Basin Size 24 Grate Style STD

## Accessories

Inserta-Tee® (qty/size)

Flexstorm™ Catch-It

FX ☐ FXO ☐FXP ☐

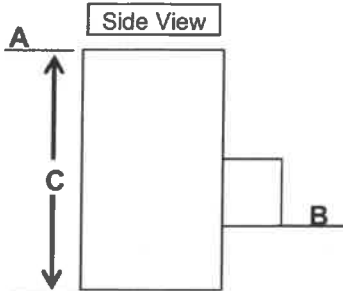
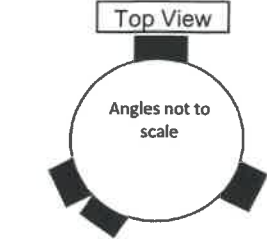
Flexstorm™ PURE

PC ☐ PCP ☐

## \*Notes

VERIFY PIPE TYPE; VERIFY  
 DS PIPE SIZE / TYPE &  
 INVERT HDPE

\*Required Sump Depths:  
 6" - 8" -24" Basins  
 10" - 30" Basins

(For Roll Curb Inlet, Left or Right flow) ☐ Left ☐ Right

	Stub Size	Location	Type of Pipe
B#1	15	0	N12
B#2	6-10	129	N12
B#3	15	194	N12
B#4	6-10	262	N12

NOTE: OUTFLOW PIPE LOCATED AT ZERO DEGREES

A) Rim Elevation  
(Plans) (FT)

A) 1019.75  
 C) 68.04

C) Basin Height (IN)\*

B) Pipe Invert Elevations

Plans (FT)	Production (IN)
B#1 1014.58	62.04
B#2 1015.58	50.04
B#3 1015.08	56.04
B#4 1015.58	50.04

1015.08  
 1015.08

Job Name The Residence at Echelon Date 9/13/2017  
 Drawing # 16-3 Customer Initial

Drain Basin Size 24 Grate Style STD

## Accessories

Inserta-Tee® (qty/size)

Flexstorm™ Catch-It

FX ☐ FXO ☐FXP ☐

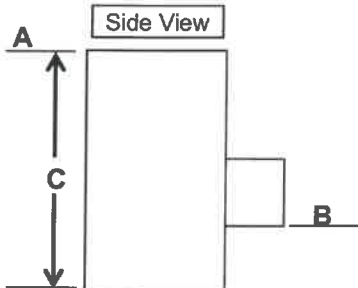
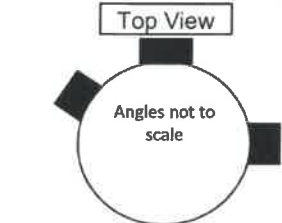
Flexstorm™ PURE

PC ☐ PCP ☐

## \*Notes

VERIFY PIPE TYPE; VERIFY  
 DS PIPE SIZE / TYPE &  
 INVERT HDPE

\*Required Sump Depths:  
 6" - 8" -24" Basins  
 10" - 30" Basins

(For Roll Curb Inlet, Left or Right flow) ☐ Left ☐ Right

	Stub Size	Location	Type of Pipe
B#1	15	0	N12
B#2	6-10	90	N12
B#3	15	277	N12
B#4			

NOTE: OUTFLOW PIPE LOCATED AT ZERO DEGREES

A) Rim Elevation  
(Plans) (FT)

A) 1019.75  
 C) 57.6

C) Basin Height (IN)\*

B) Pipe Invert Elevations

Plans (FT)	Production (IN)
B#1 1015.45	51.6
B#2 1016.45	39.6
B#3 1015.95	45.6
B#4	

1015.95

NOTE: Drawings need to be Complete. This product is made to order and non-Refundable

NYLOPLAST: 3130 Verona Ave. Buford, GA 30518. (866) 888-8479

Nyloplast®, InsertaTee®, Flexstorm™ are registered trademarks of Advanced Drainage Systems®

Production order forms are based on interpretations of provided storm details.  
 Customer is responsible for confirmation of information and final approval of order form.



## Submittal Form

Drain Basins  
Curb Inlet Structures  
Road & Hwy. Structures

Order #

Job Name The Residence at Echelon Date 9/13/2017  
 Drawing # 16-4 Customer Initial

Drain Basin Size 24 Grate Style STD

## Accessories

Inserta-Tee® (qty/size)

Flexstorm™ Catch-It

FX ☐ FXO ☐FXP ☐

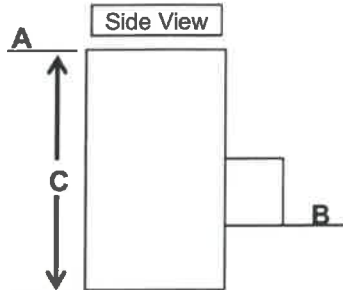
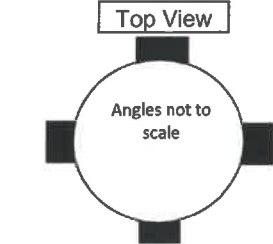
Flexstorm™ PURE

PC ☐ PCP ☐

## \*Notes

VERIFY PIPE TYPE; VERIFY  
 DS PIPE SIZE / TYPE &  
 INVERT HDPE

\*Required Sump Depths:  
 6" - 8" - 24" Basins  
 10" - 30" Basins

(For Roll Curb Inlet, Left or Right flow) ☐ Left ☐ Right

	Stub Size	Location	Type of Pipe
B#1	15	0	N12
B#2	6 10	90	N12
B#3	6 10	180	N12
B#4	6 10	270	N12

NOTE: OUTFLOW PIPE LOCATED AT ZERO DEGREES

A) Rim Elevation  
(Plans) (FT)

A) 1019.75  
 C) 49.56

C) Basin Height (IN)\*

B) Pipe Invert Elevations  
Plans (FT)

B#1	1016.12	43.56
B#2	1016.62	37.56
B#3	1016.62	37.56
B#4	1016.62	37.56

Production (IN)

Job Name The Residence at Echelon Date 9/13/2017  
 Drawing # 17-1 Customer Initial

Drain Basin Size 24 Grate Style STD

## Accessories

Inserta-Tee® (qty/size)

Flexstorm™ Catch-It

FX ☐ FXO ☐FXP ☐

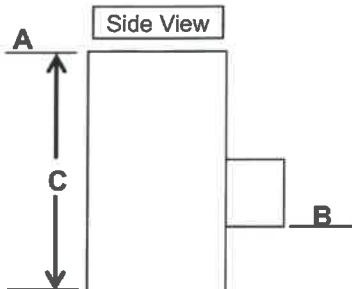
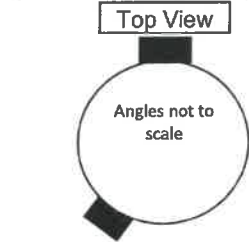
Flexstorm™ PURE

PC ☐ PCP ☐

## \*Notes

VERIFY PIPE TYPE; VERIFY  
 DS PIPE SIZE / TYPE &  
 INVERT HDPE

\*Required Sump Depths:  
 6" - 8" - 24" Basins  
 10" - 30" Basins

(For Roll Curb Inlet, Left or Right flow) ☐ Left ☐ Right

	Stub Size	Location	Type of Pipe
B#1	15	0	N12
B#2	6 10	194	N12
B#3			
B#4			

NOTE: OUTFLOW PIPE LOCATED AT ZERO DEGREES

A) Rim Elevation  
(Plans) (FT)

A) 1020  
 C) 66

C) Basin Height (IN)\*

B) Pipe Invert Elevations  
Plans (FT)

B#1	1015	60
B#2	1015.5	54
B#3		
B#4		

Production (IN)

NOTE: Drawings need to be Complete. This product is made to order and non-Refundable

NYLOPLAST: 3130 Verona Ave. Buford, GA 30518. (866) 888-8479

Nyloplast®, InsertaTee®, Flexstorm™ are registered trademarks of Advanced Drainage Systems®

Production order forms are based on interpretations of provided storm details.  
 Customer is responsible for confirmation of information and final approval of order form.