

A Front

scale: 3/8" = 1'-0"



STAR SIGNS, LLC
801 EAST NINTH STREET
LAWRENCE, KANSAS 66044
P 785.842.4892 F 785.842.2947
WWW.STARSIGNSLLC.COM

The Summit Church

Building ID Sign
2 set

THIS DRAWING IS THE SOLE PROPERTY OF STAR SIGNS, L.L.C., AND IS INTENDED FOR CUSTOMER APPROVAL ONLY.

REVISIONS:

1	11/10/16	Change sign location HG
2	11/14/16	Reduce logo size HG
3	12/19/16	Change copy arrangement and size HG

4	12/19/16	Add north elevation and section view HG.

☐ APPROVED

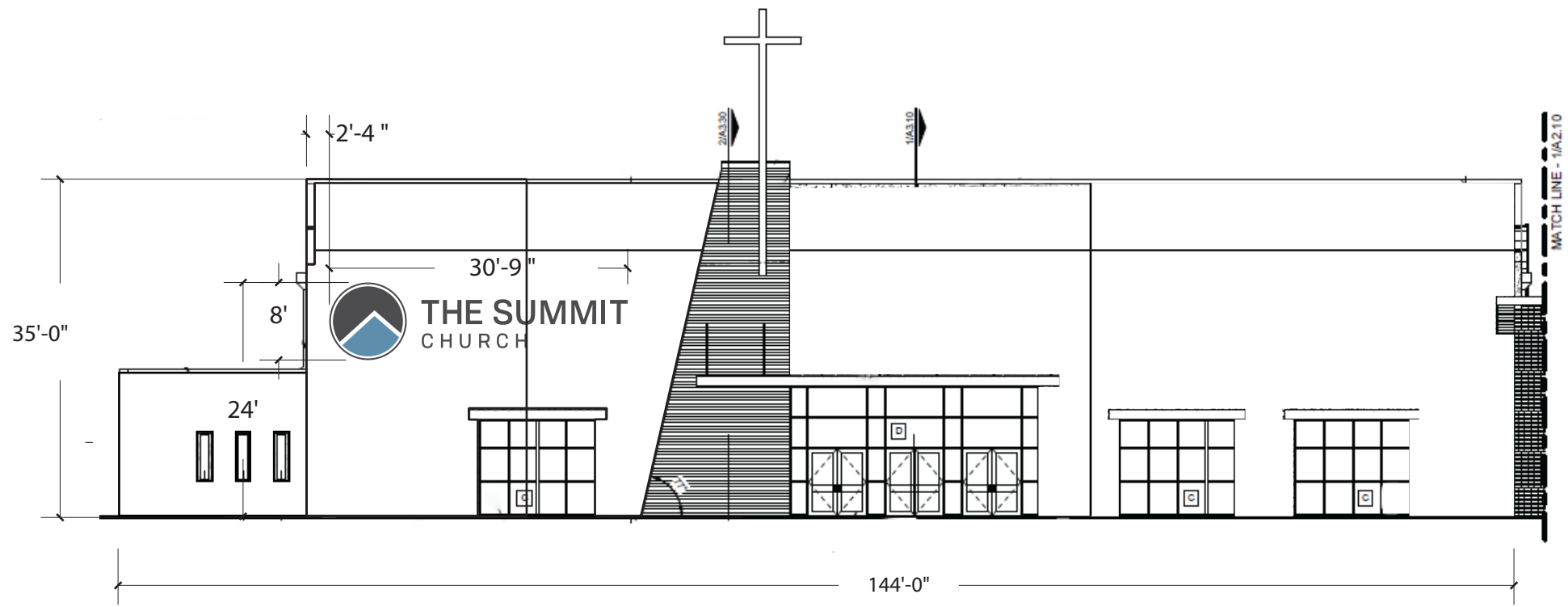
☐ APPROVED AS NOTED

☐ REVISE AND RESUBMIT

DATE

SIGNATURE

SALESPERSON: SR
DRAWN BY: HG
ART #: 9056 SO #: 4770



A Elevation - West

scale: 1/16" = 1'-0"



STAR SIGNS, LLC
801 EAST NINTH STREET
LAWRENCE, KANSAS 66044
P 785.842.4892 F 785.842.2947
WWW.STARSIGNSLLC.COM

The Summit Church

Building ID Sign
2 set

THIS DRAWING IS THE SOLE PROPERTY OF STAR SIGNS,
L.L.C., AND IS INTENDED FOR CUSTOMER APPROVAL ONLY.

REVISIONS:

1	11/10/16	Change sign location HG
2	11/14/16	Reduce logo size HG
3	12/19/16	Change copy arrangement and size HG

4	12/19/16	Add north elevation and section view HG.

☐ APPROVED

☐ APPROVED
AS NOTED

☐ REVISE AND
RESUBMIT

DATE

SIGNATURE

SALESPERSON: SR

DRAWN BY: HG

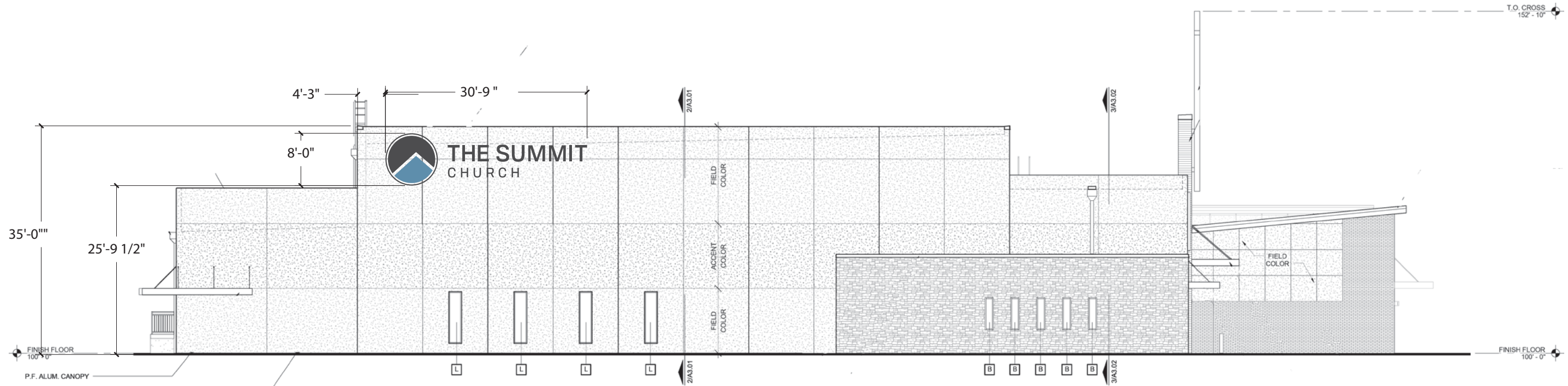
ART #: 9056 SO #: 4770

PRINTED: 1 / 18 / 2017

FIRST PRINT: 8/29/2016

2

SHEET



A Elevation - North

scale: 1/16" = 1'-0"



STAR SIGNS, LLC
801 EAST NINTH STREET
LAWRENCE, KANSAS 66044
P 785.842.4892 F 785.842.2947
WWW.STARSIGNSLLC.COM

The Summit Church

Building ID Sign
2 set

THIS DRAWING IS THE SOLE PROPERTY OF STAR SIGNS,
L.L.C., AND IS INTENDED FOR CUSTOMER APPROVAL ONLY.

REVISIONS:

1	11/10/16	Change sign location HG
2	11/14/16	Reduce logo size HG
3	12/19/16	Change copy arrangement and size HG

4	12/19/16	Add north elevation and section view HG.

☐ APPROVED

☐ APPROVED
AS NOTED

☐ REVISE AND
RESUBMIT

DATE

SIGNATURE

SALESPERSON: SR

DRAWN BY: HG

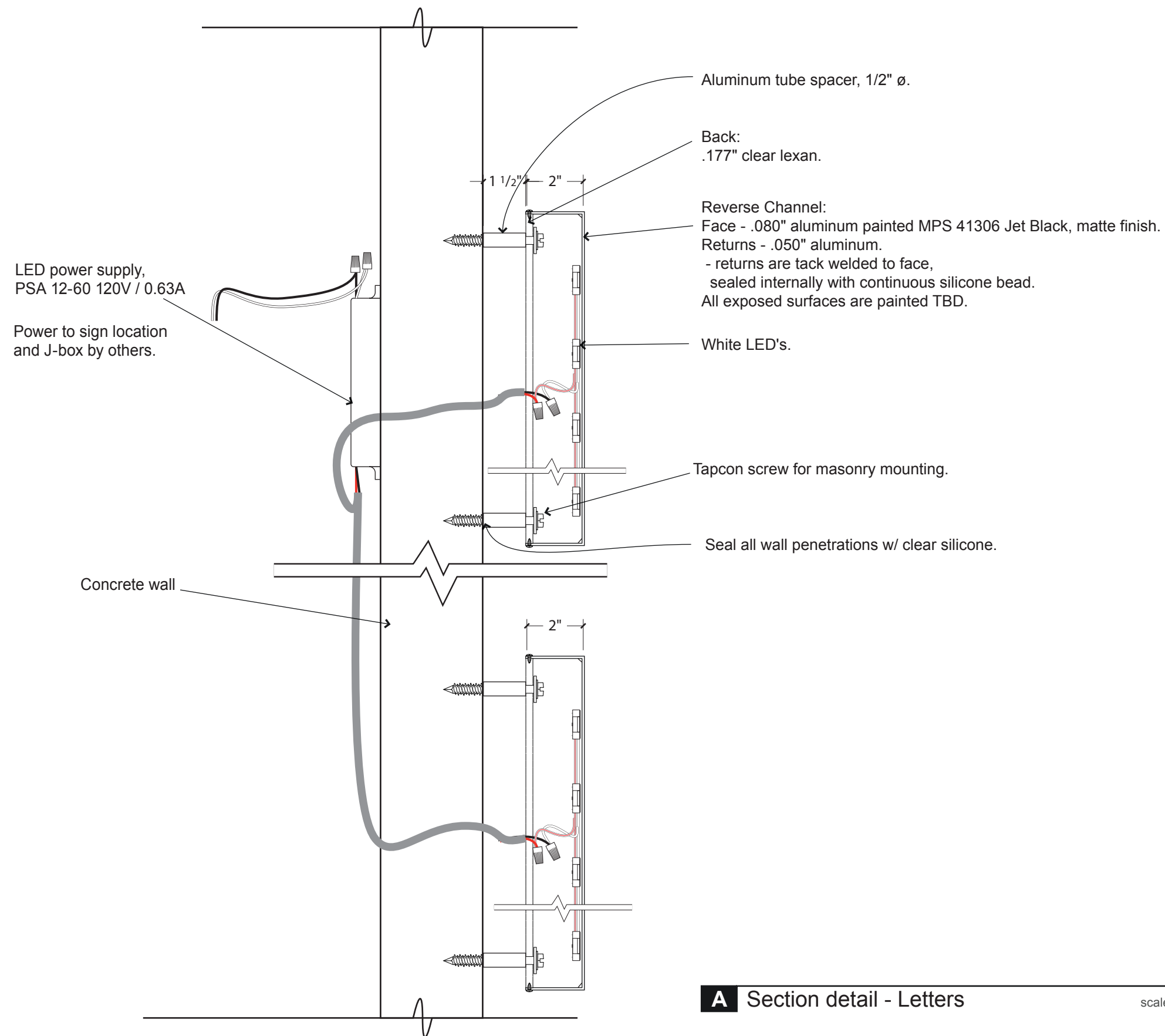
ART #: 9056 SO #: 4770

PRINTED: 1 / 18 / 2017

FIRST PRINT: 8/29/2016

3

SHEET



A Section detail - Letters

scale: 3" = 1'-0"



STAR SIGNS, LLC
801 EAST NINTH STREET
LAWRENCE, KANSAS 66044
P 785.842.4892 F 785.842.2947
WWW.STARSIGNSLLC.COM

The Summit Church

Building ID Sign
1 set

THIS DRAWING IS THE SOLE PROPERTY OF STAR SIGNS,
L.L.C., AND IS INTENDED FOR CUSTOMER APPROVAL ONLY.

REVISIONS:

1	11/10/16	Change sign location HG
2	11/14/16	Reduce logo size HG
3	12/19/16	Change copy arrangement and size HG

4 12/19/16 Add north elevation and section view HG.

☐ APPROVED

☐ APPROVED
AS NOTED

☐ REVISE AND
RESUBMIT

DATE

SIGNATURE

SALESPERSON: SR

DRAWN BY: HG

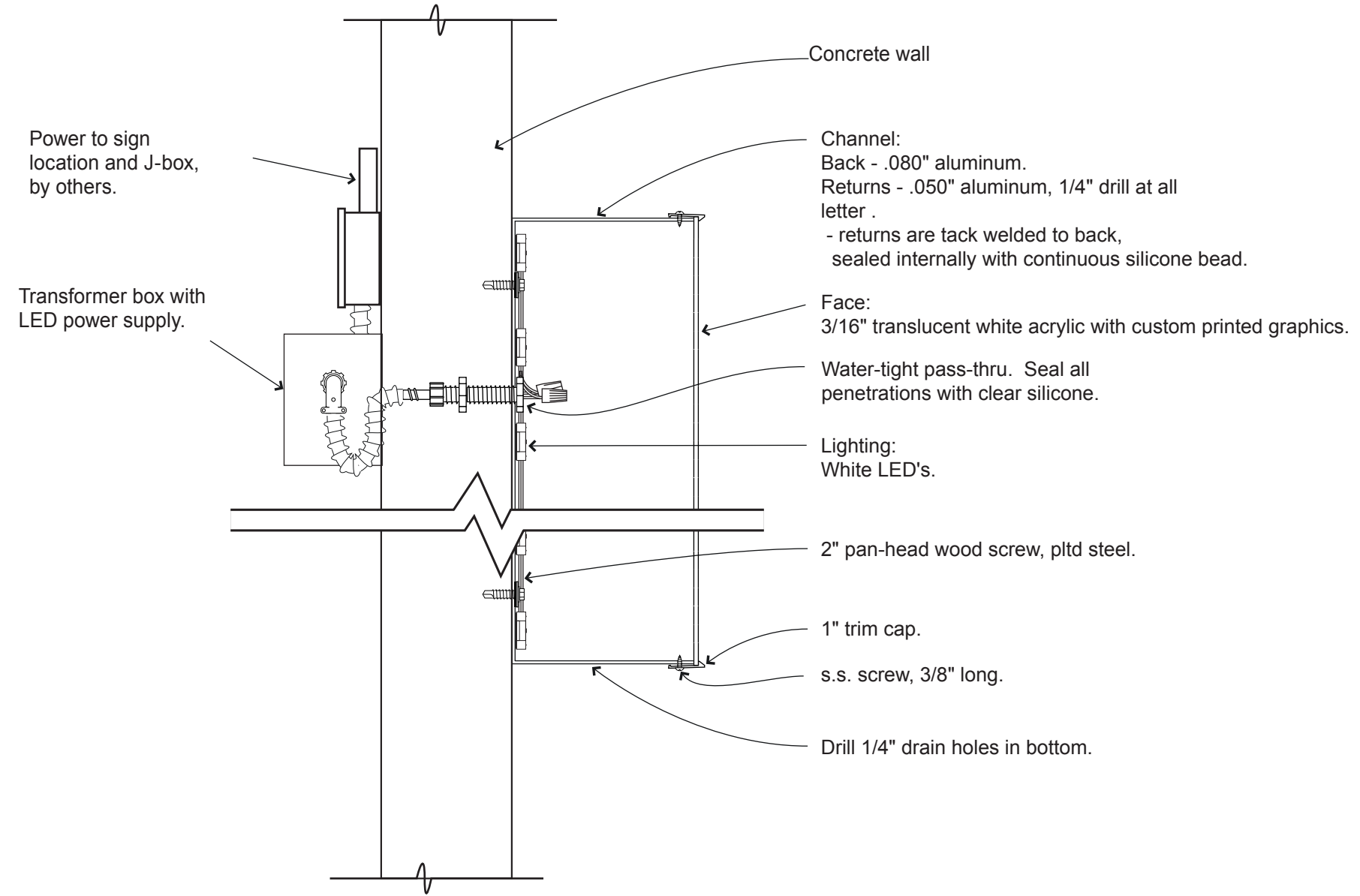
ART #: 9056 SO #: 4770

PRINTED: 1 / 18 / 2017

FIRST PRINT: 8/29/2016

4

SHEET



A Section detail - Logo Cabinet scale: 3" = 1'-0"



STAR SIGNS, LLC
801 EAST NINTH STREET
LAWRENCE, KANSAS 66044
P 785.842.4892 F 785.842.2947
WWW.STARSIGNSLLC.COM

The Summit Church

Building ID Sign
1 set

THIS DRAWING IS THE SOLE PROPERTY OF STAR SIGNS, L.L.C., AND IS INTENDED FOR CUSTOMER APPROVAL ONLY.

REVISIONS:			4	12/19/16	Add north elevation and section view HG.
1	11/10/16	Change sign location HG			
2	11/14/16	Reduce logo size HG			
3	12/19/16	Change copy arrangement and size HG			

<input type="checkbox"/> APPROVED	<input type="checkbox"/> APPROVED AS NOTED	<input type="checkbox"/> REVISE AND RESUBMIT
<hr/>		
DATE	SIGNATURE	

SALESPERSON: SR
DRAWN BY: HG
ART #: 9056 SO #: 4770