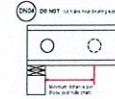
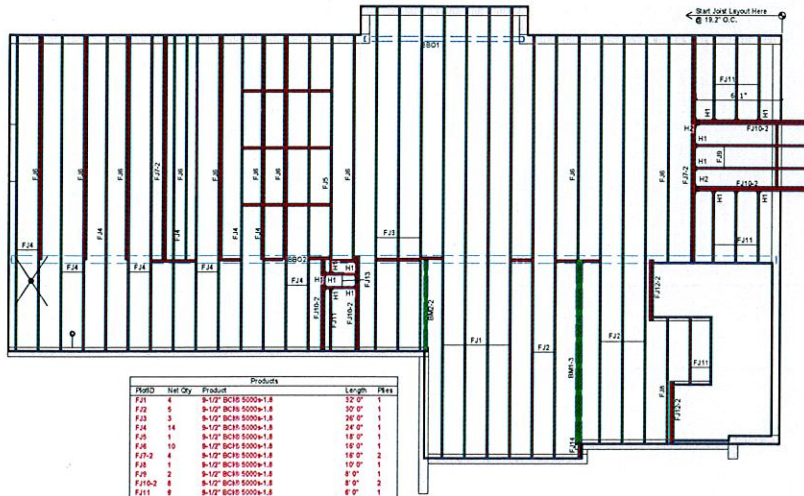


Lot #114 Mill Creek

Joist Spacing 19.2" O.C

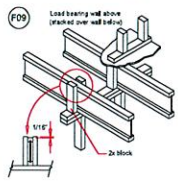


Recommended 1st Floor Placement Plan

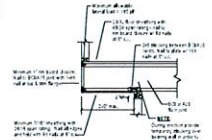


PartID	Qty	Product	Length	Pkls
F1-1	4	8-1/2" BCH 5000x1.8	22'0"	1
F1-2	5	8-1/2" BCH 5000x1.8	20'0"	1
F1-3	3	8-1/2" BCH 5000x1.8	20'0"	1
F1-4	14	8-1/2" BCH 5000x1.8	24'0"	1
F1-5	1	8-1/2" BCH 5000x1.8	18'0"	1
F1-6	10	8-1/2" BCH 5000x1.8	18'0"	1
F1-7	4	8-1/2" BCH 5000x1.8	18'0"	2
F1-8	1	8-1/2" BCH 5000x1.8	10'0"	1
F1-9	2	8-1/2" BCH 5000x1.8	8'0"	1
F1-10	6	8-1/2" BCH 5000x1.8	8'0"	2
F1-11	8	8-1/2" BCH 5000x1.8	8'0"	1
F1-12	4	8-1/2" BCH 5000x1.8	8'0"	2
F1-13	3	8-1/2" BCH 5000x1.8	8'0"	1
F1-14	1	8-1/2" BCH 5000x1.8	2'0"	1
BM1-1	3	1-3/4" x 8-1/2" VERSALAM 2.0 3100 GP	14'0"	3
BM2-1	2	1-3/4" x 8-1/2" VERSALAM 2.0 3100 GP	8'0"	2
Cat1	14	1-1/8" x 8-1/2" BC RIM BOARD OSB	18'0"	1
BS1	1	8-1/2" BCH 5000x1.8	24'0"	1

PartID	Qty	Manuf	Product
H11	14	Simpson	FJ2 2.0x9.5
H2	2	Simpson	MU 4.129

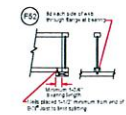


SQUARE CANTILEVER WITHOUT BLOCKING



NOTES

1. This detail is applicable to all joist types, including composite joists.
2. Connections must be made per manufacturer's instructions.
3. All joists must be supported by a bearing wall or post.
4. All joists must be supported by a bearing wall or post.
5. All joists must be supported by a bearing wall or post.
6. All joists must be supported by a bearing wall or post.

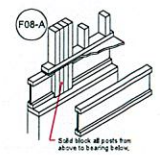
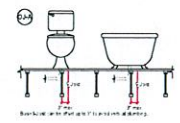


Recommended 2nd Floor Placement Plan



PartID	Qty	Manuf	Product
H1	1	Simpson	FJ2 2.0x9.5
H2	2	Simpson	L350x119
H4	10	Simpson	MU 4.129
H5	2	Simpson	SU2.059
H6	2	Simpson	SU4.615
H7	4	Simpson	SUR2.059
H9	1	HUCK	1.59
H10	1	HUCK	1.59
H11	1	LS70	
H12	1	LS70	

PartID	Qty	Product	Length	Pkls
F15	8	8-1/2" BCH 5000x1.8	22'0"	1
F16	2	8-1/2" BCH 5000x1.8	20'0"	1
F17	2	8-1/2" BCH 5000x1.8	20'0"	1
F18	15	8-1/2" BCH 5000x1.8	24'0"	1
F19	4	8-1/2" BCH 5000x1.8	18'0"	1
F20	2	8-1/2" BCH 5000x1.8	18'0"	1
F21	11	8-1/2" BCH 5000x1.8	18'0"	1
F22	1	8-1/2" BCH 5000x1.8	10'0"	1
F23	4	8-1/2" BCH 5000x1.8	8'0"	2
F24	4	8-1/2" BCH 5000x1.8	8'0"	2
F25	8	8-1/2" BCH 5000x1.8	8'0"	1
BM5-1	2	1-3/4" x 8-1/2" VERSALAM 2.0 3100 GP	18'0"	2
BM5-2	2	1-3/4" x 8-1/2" VERSALAM 2.0 3100 GP	18'0"	2
BM5-3	2	1-3/4" x 8-1/2" VERSALAM 2.0 3100 GP	14'0"	2
BM5-4	4	1-3/4" x 8-1/2" VERSALAM 2.0 3100 GP	12'0"	2
BM5-5	2	1-3/4" x 8-1/2" VERSALAM 2.0 3100 GP	10'0"	2
BM5-6	2	1-3/4" x 8-1/2" VERSALAM 2.0 3100 GP	8'0"	2
BM7	1	1-3/4" x 8-1/2" VERSALAM 2.0 3100 GP	2'0"	1
BM8-1	4	1-3/4" x 8-1/2" VERSALAM 2.0 3100 GP	6'0"	2
BM8	1	1-3/4" x 8-1/2" VERSALAM 2.0 3100 GP	2'0"	1
Cat1	8	1-1/8" x 8-1/2" BC RIM BOARD OSB	18'0"	1
BS1	1	8-1/2" BCH 5000x1.8	42'0"	1



DESIGN LOAD
Live Load 40 PSF
Dead Load 15 PSF
Total Load 55 PSF

Revisions: BY:



NOTE:
ALL MEASUREMENTS
TO BE VERIFIED
IN THE FIELD.

SALES PRESENTATION DRAWING
Purchaser is to check and approve all dimensions,
quantities, loads and details carefully.
This drawing has not been checked by
Boise Cascade Engineering.

SUMMIT Custom Homes
Lot #114 Mill Creek
Mc C RAY L.L.B.E.
Edwardville, Bryon Keller (937) 422-1300

Scale: 1/4" = 1'-0"
DWG: BC FRAMER
File: 9421
By: D Duckworth
Date: 11/24/2015
Sheet 1 of 1

