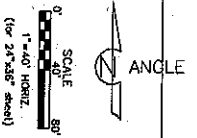
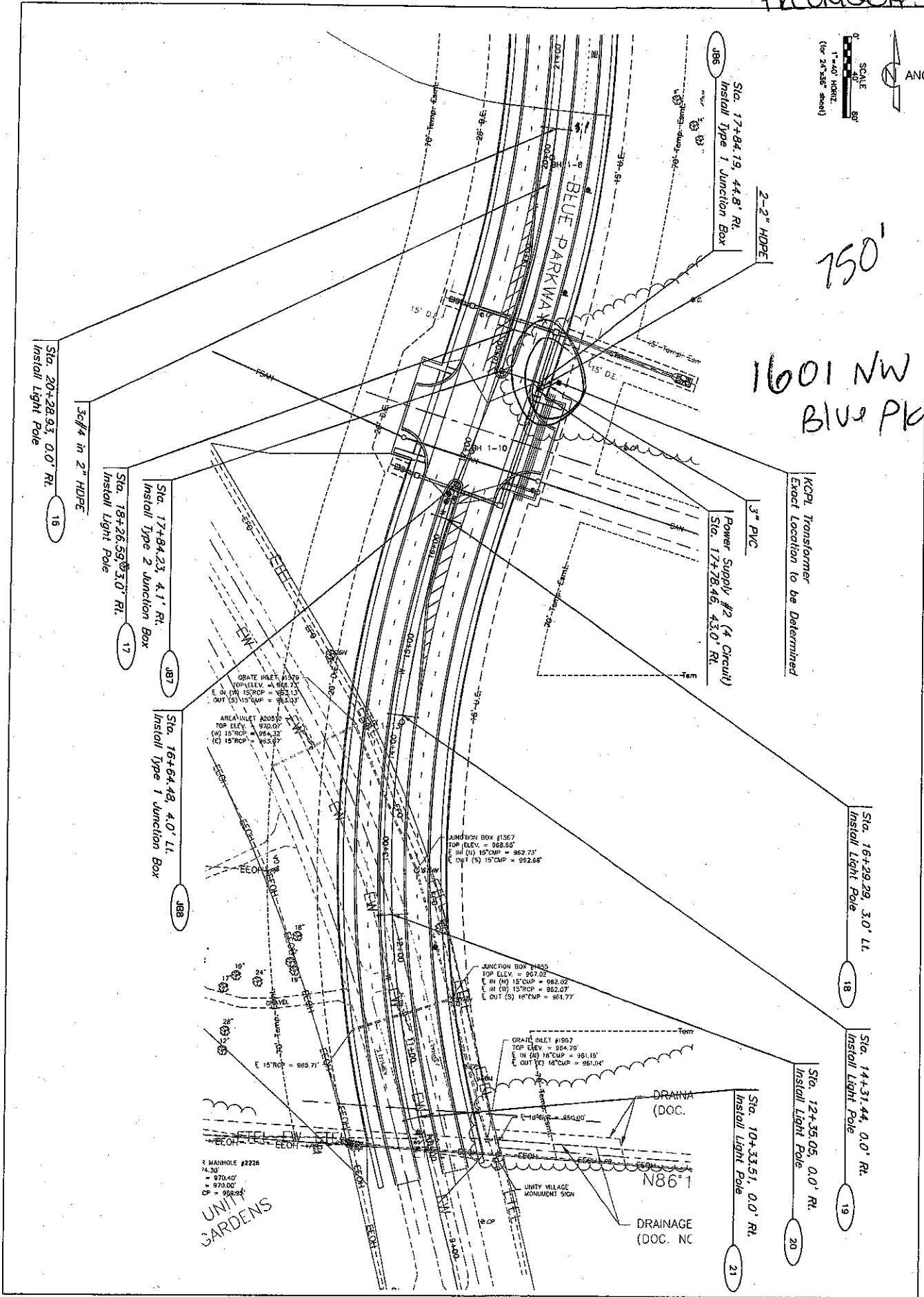


PRECON 2014 3059



750'
1601 NW
BLUE PKWY



Sta. 20+28.93, 0.0' Rt.
Install Light Pole
16

Sta. 18+26.59, 3.0' Rt.
Install Light Pole
17

Sta. 17+84.23, 4.1' Rt.
Install Type 2 Junction Box
187

Sta. 16+64.42, 4.0' Lt.
Install Type 1 Junction Box
188

3" PVC
Power Supply #2 (4 Circuit)
Sta. 17+28.46, 43.0' Rt.

KCP Transformer
Exact Location to be Determined

Sta. 18+29.29, 3.0' Lt.
Install Light Pole
18

Sta. 14+31.44, 0.0' Rt.
Install Light Pole
19

Sta. 12+35.05, 0.0' Rt.
Install Light Pole
20

Sta. 10+33.51, 0.0' Rt.
Install Light Pole
21

UNIT GARDENS

DRAINAGE (DOC. NC)
DRAINAGE (DOC.)

Sheet No.: 4

PROFESSIONAL ENGINEER
MISSOURI LICENSE NO. 10227815



Kristin L. Skinner
M.P. 2006020266
Reviewed By: K.L.S.
Designed By: K.L.S.



12-14-12	Kristin L. Skinner	Prepared for Review
3-28-13	Kristin L. Skinner	Revised Per City Comments
5-31-15	Kristin L. Skinner	Revised Per City Comments
DATE	P.E. SIGNATURE	DESCRIPTION

STREET LIGHTING PLAN
BLUE PARKWAY LIGHTING
Lee's Summit, Jackson County, Missouri