

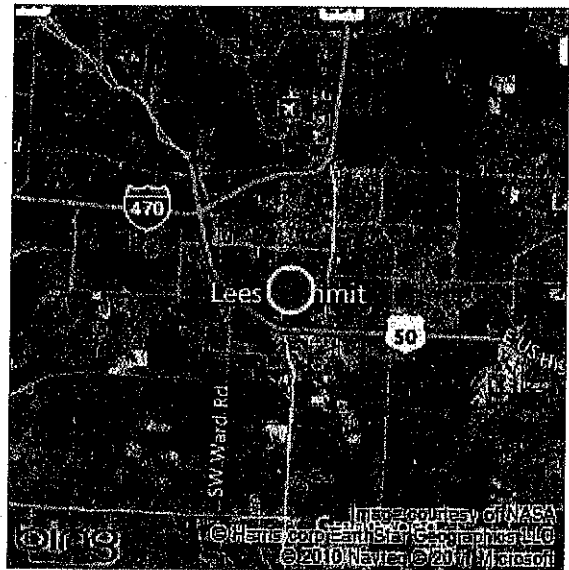
no scale

bing Maps

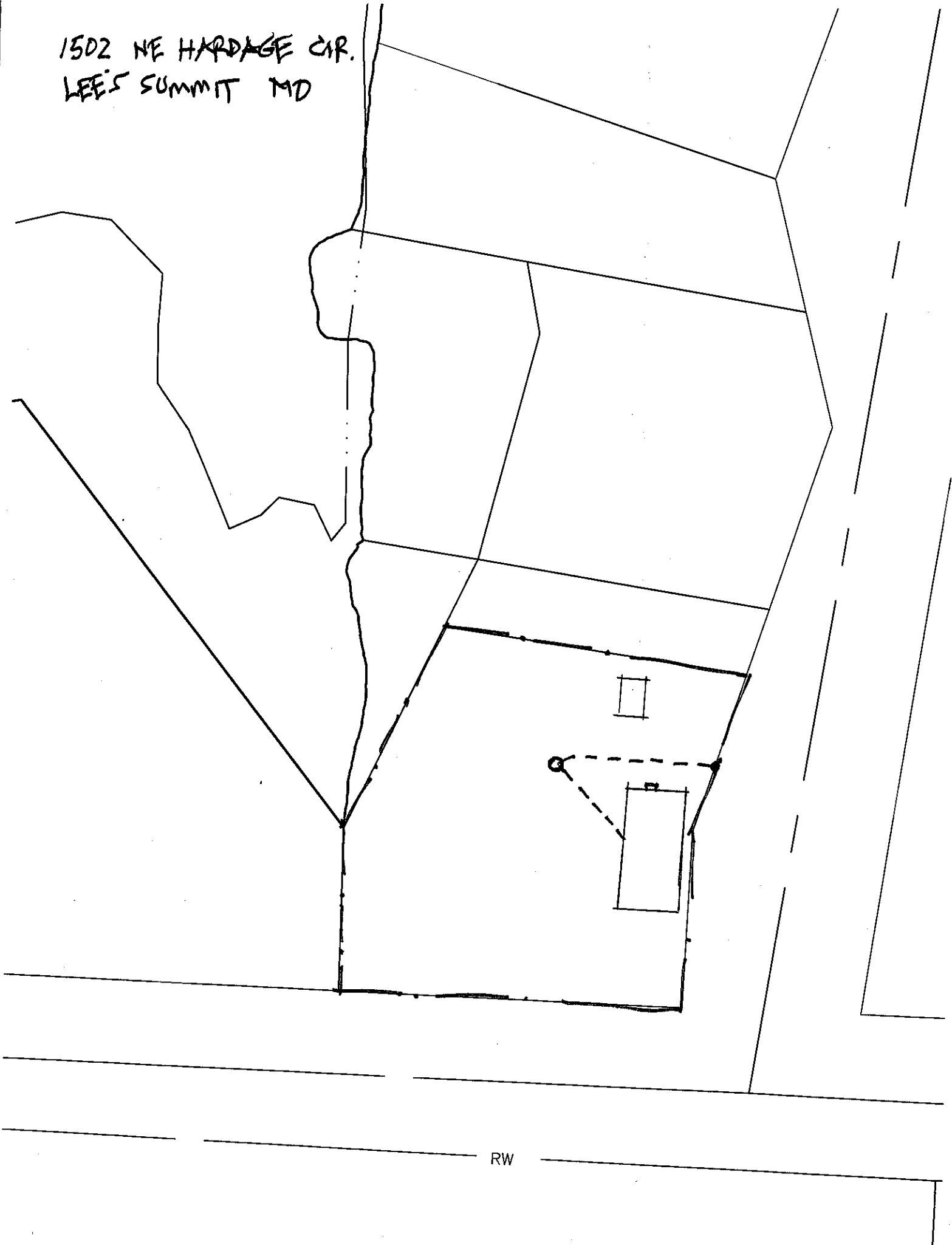
Lees Summit, MO

My Notes

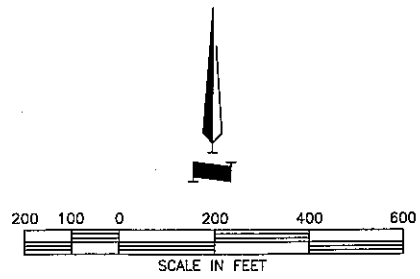
On the go? Use m.bing.com to find maps, directions, businesses, and more



1502 NE HARDAGE CIR.
LEE'S SUMMIT MD



RW



E. T. ARCHER CORPORATION D.B.A.

Archer

CAPITAL PROJECT MANAGEMENT

OFFICE: 3741 NE TROON DRIVE
LEE'S SUMMIT, MO 64084
816-554-3019

OTHER OFFICE LOCATIONS

- ♦ 8340 MISSION ROAD, SUITE 240, PRAIRIE VILLAGE, KS 66208 • 813-882-8787 • FAX 816-347-1300
- ♦ 187 E. DAVIS, P.O. BOX 906, FORDYTH, MO 65053 • 417-548-3218 • FAX 417-548-6324
- ♦ 800 STARKS BUILDING, LOUISVILLE, KY 40202 • 502-581-9454 • FAX 502-581-9485
- ♦ 1000 CITY PARKWAY, COASKE BEACH, MO 65085 • 873-348-3223 • FAX 873-348-3488
- ♦ 1081 KINGS HIGHWAY, SUITE 7, P.O. BOX 837, ROLLA, MO 65402 • 873-364-3480 • FAX 873-364-4170
- ♦ 388 CARPENTER DRIVE, HOLLISTER, MO 65672 • 417-334-7817 • FAX 417-334-8812
- ♦ 258 SO. UNION, SPRINGFIELD, MO 65802 • 417-888-4083 • FAX 417-888-4085
- ♦ 2480 EXECUTIVE DRIVE, SUITE 116, ST. CHARLES, MO 63303 • 636-477-8386 • FAX 636-477-7866

**PRAIRIE LEE LAKE
COMMUNITY IMPROVEMENT DISTRICT**

NORTH AREA

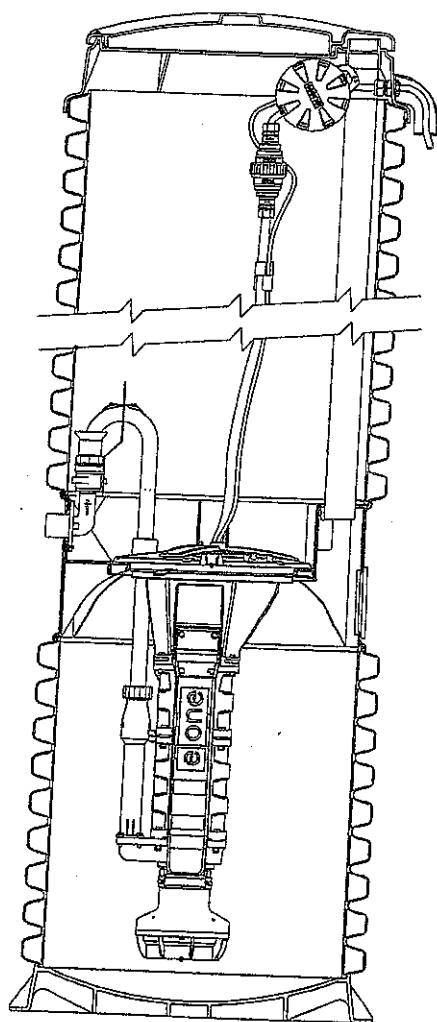
PROJECT NO.

DRAWING NO.

E/ONE EXTREME

S E R I E S

DH071/DR071



General Features

The model DH071 or DR071 grinder pump station is a complete unit that includes: the grinder pump, check valve, HDPE (high density polyethylene) tank and controls. The DH071 or DR071 is packaged into a single complete unit, ready for installation.

The DH071 is the "hardwired," or "wired," model where a cable connects the motor controls to the level controls through watertight penetrations.

The DR071 is the "radio frequency identification" (RFID), or "wireless," model that uses wireless technology to communicate between the level controls and the motor controls.

All solids are ground into fine particles, allowing them to pass easily through the pump, check valve and small diameter pipelines. Even objects not normally found in sewage, such as plastic, rubber, fiber, wood, etc., are ground into fine particles.

The 1.25-inch discharge connection is adaptable to any piping materials, thereby allowing us to meet your local code requirements.

The tank is made of tough corrosion-resistant HDPE. The optimum tank capacity of 70 gallons (265 liters) is based on computer studies of water usage patterns. A single DH071 or DR071 is ideal for one, average single-family home and can also be used for up to two average single-family homes where codes allow and with consent of the factory. This model can accommodate flows of 700 GPD (2650 lpd).

The internal check valve assembly, located in the grinder pump, is custom-designed for non-clog.

trouble-free operation.

The grinder pump is automatically activated and runs infrequently for very short periods. The annual energy consumption is typically that of a 40-watt light bulb.

Units are available for indoor and outdoor installations. Outdoor units are designed to accommodate a wide range of burial depths.

Operational Information

Motor

1 hp, 1,725 rpm, high torque, capacitor start, thermally protected, 120/240V, 60 Hz, 1 phase

Inlet Connections

4-inch inlet grommet standard for DWV pipe. Other inlet configurations available from the factory.

Discharge Connections

Pump discharge terminates in 1.25-inch NPT female thread. Can easily be adapted to 1.25-inch PVC pipe or any other material required by local codes

Discharge*

15 gpm at 0 psig (.75 lps at 0 m TDH)

11 gpm at 40 psig (.63 lps at 20 m TDH)

7.8 gpm at 80 psig (.47 lps at 42 m TDH)

Overload Capacity

The maximum pressure that the pump can generate is limited by the motor characteristics. The motor generates a pressure well below the rating of the piping and appurtenances. The automatic reset feature does not require manual operation following overload.

Patent Numbers: 5,752,315
5,562,254 5,439,180

* Discharge data includes loss through check valve, which is minimal.

NA0050P01 Rev A

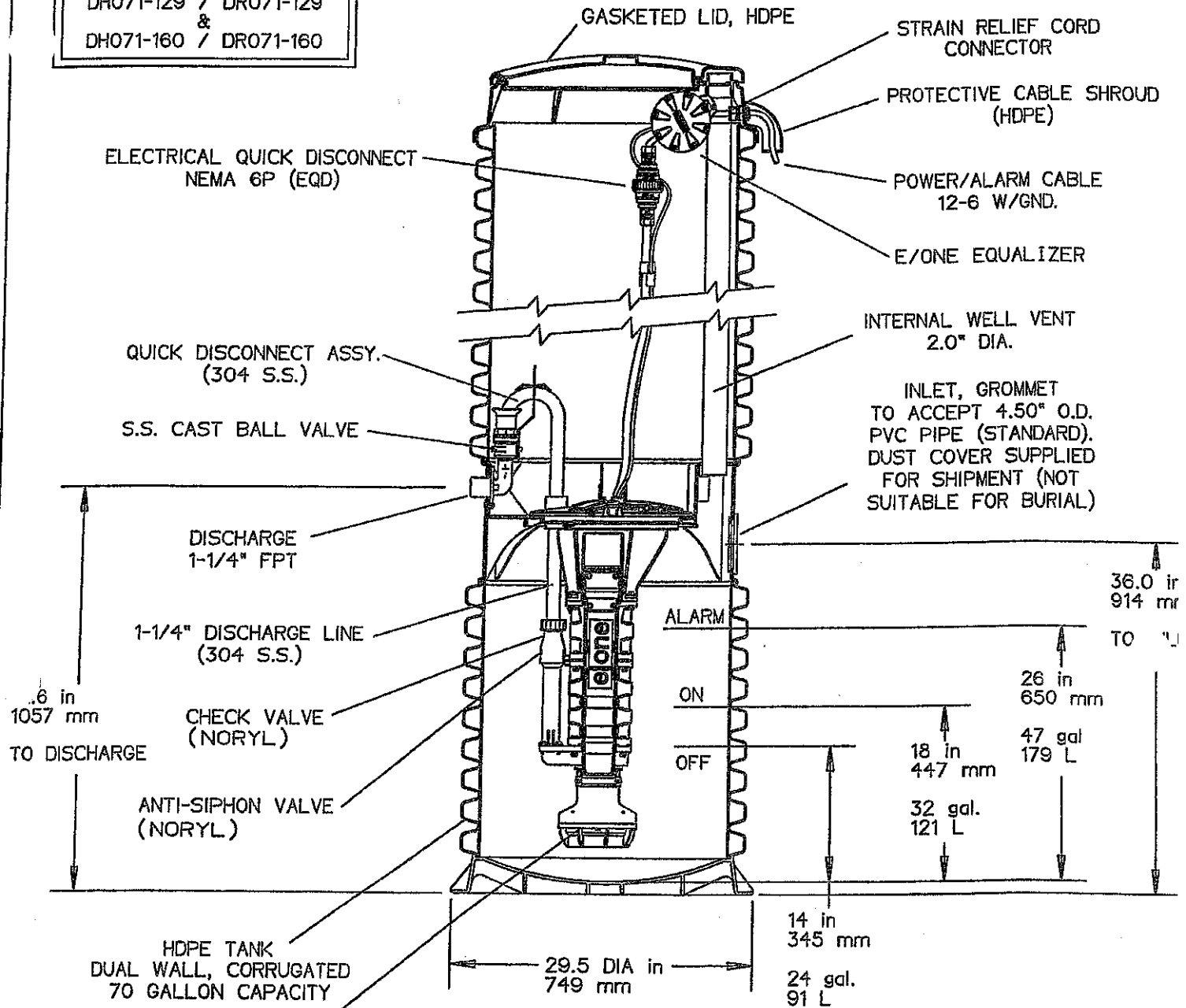
FIELD JOINT REQUIRED
FOR MODELS
DH071-129 / DR071-129
&
DH071-160 / DR071-160

OPTIONS : ☒ **DH071**

(HARD WIRED
LEVEL CONTROL

☐ **DR071**

(WIRELESS
LEVEL CONTROL



SEMI-POSITIVE DISPLACEMENT TYPE PUMP,
EACH DIRECTLY DRIVEN BY A 1 HP MOTOR

CONCRETE BALLAST MAY BE REQUIRED
SEE INSTALLATION INSTRUCTION
FOR DETAILS



AD	CH	10/20/10	C	
DR BY	CHK'D	DATE	ISSUE	SCAL

eone
SEWER SYSTEMS

MODEL DH071 / DR071
DETAIL SHEET

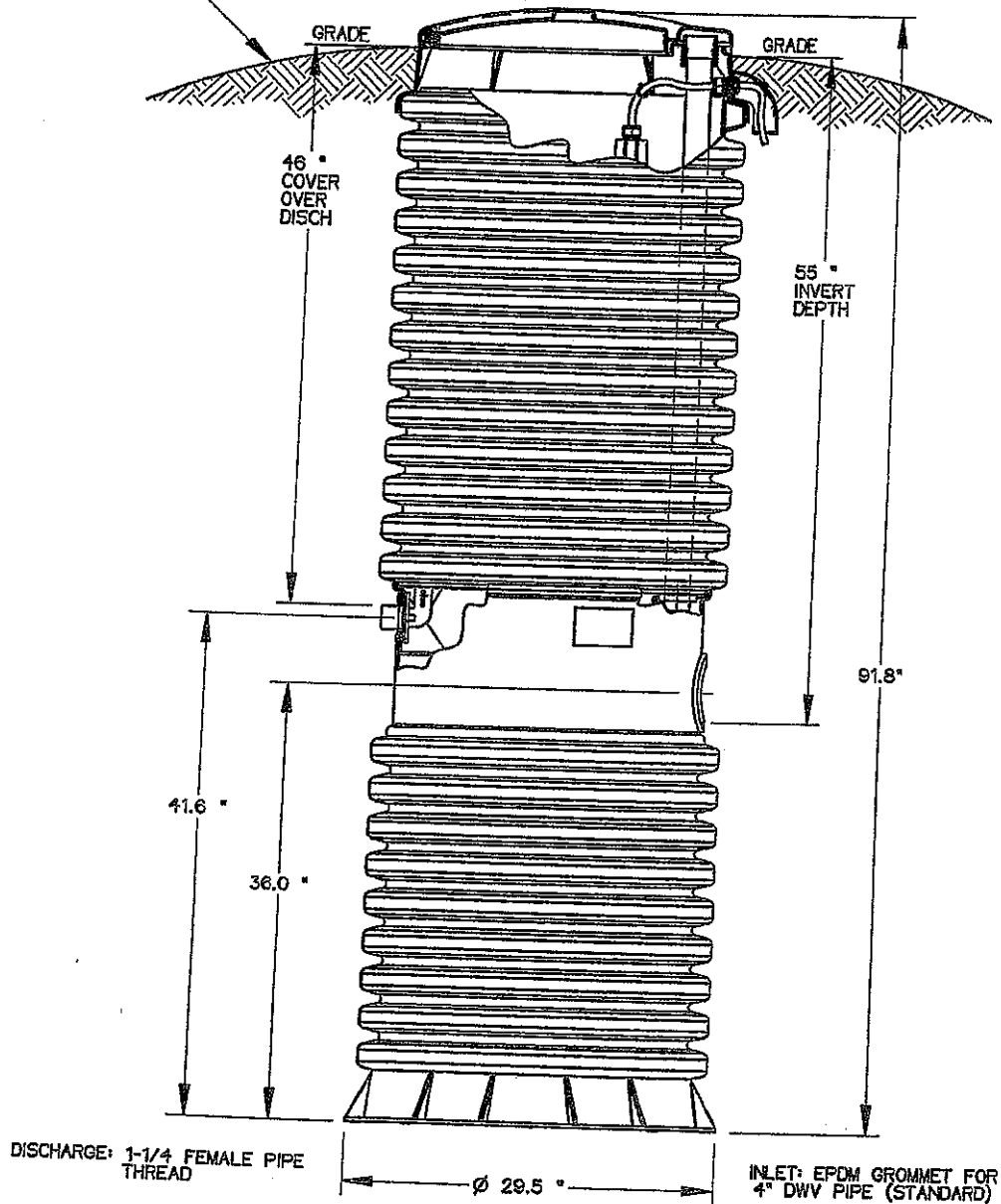
NA0050P02

OPTIONS : ☒ **DH071-93**
☐ **DR071-93**

(HARD WIRE
LEVEL CONTR)

(WIRELESS
LEVEL CONTR)

GRADE MUST SLOPE
AWAY FROM STATION



CONCRETE BALLAST MAY BE REQUIRED
SEE INSTALLATION INSTRUCTIONS
FOR DETAILS



AD	CAH	07/12/07	A	1/
DR BY	CHK'D	DATE	ISSUE	SC



MODEL DH071-93 / DR071-93

NA0050P06

E/ONE **EXTREME** S E R I E S

E/One Sentry™

Alarm Panel — Basic Package



Description

The E/One Sentry panels are custom designed for use with Environment One grinder pump stations. They can be configured to meet the needs of your application, from basic alarm indication to advanced warning of pending service requirements.

E/One Sentry panels are supplied with audible and visual high level alarms. They are easily installed in accordance with relevant national and local codes. Standard panels are approved by UL, CSA, CE and NSF to ensure high quality and safety.

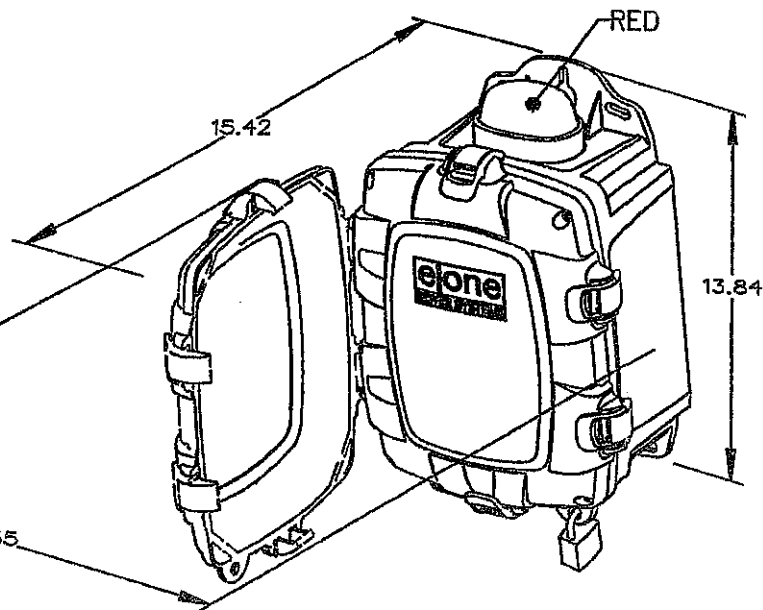
The panel features a corrosion-proof, NEMA 4X-rated, thermoplastic enclosure. A padlock is provided to prevent unauthorized entry (safety front).

Standard Features

- Circuit breakers, 240 or 120 VAC service
- Terminal blocks and ground lugs
- Audible alarm with manual silence
- Manual run feature and run indicator
- Redundant "Start" function with high level alarm
- Conformal-coated alarm board (both sides)
- Alarm board overload protection

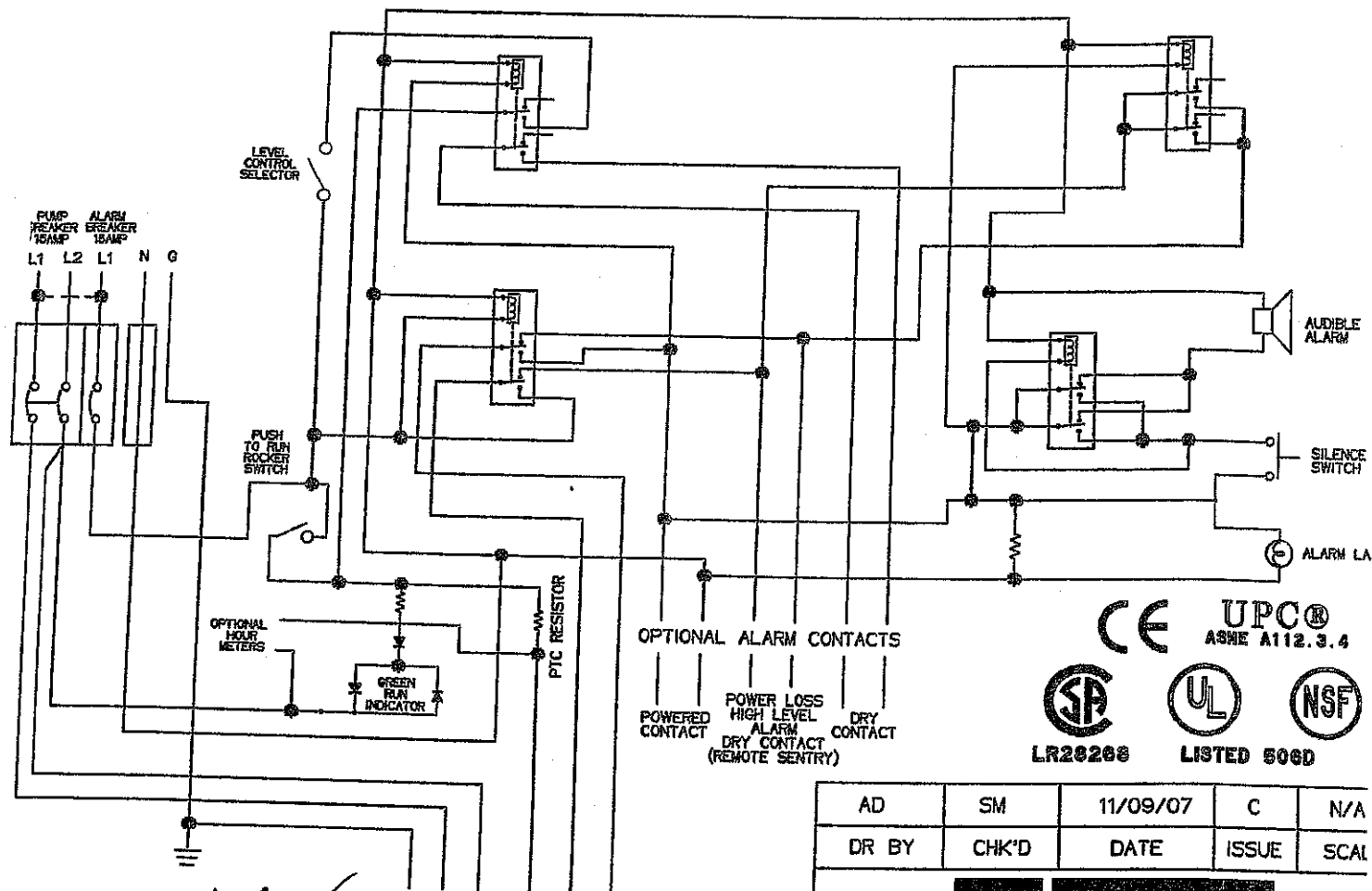
SIMPLEX SENTRY

REDUNDANT RUN (HIGH LEVEL)
INTERNAL VISUAL & AUDIBLE ALARM
EXTERNAL LATCHING MANUAL SILENCE
MANUAL RUN
PUMP RUN INDICATOR
CONFORMAL COATED CIRCUIT BOARD
PADLOCK
NEMA 4X ENCLOSURE ASSEMBLY
CORROSION PROOF THERMOPLASTIC
POLYESTER APPROVED BY UL FOR
ELECTRICAL CONTROL ENCLOSURE



OPTIONS:

☒ ALARM CONTACTS



CE UPC®
ASME A112.3.4



LR28268 LISTED 506D

PIN	FUNCTION	2000S	EXTREME
1	MANUAL RUN	RED	BROWN
2	L1	BLACK	RED
3	L2	WHITE	BLACK
4	GND	GREEN	GRN/YEL
5	ALARM FEED	ORANGE	YELLOW
6	ALARM RETURN	BLUE	BLUE

CONTROL CABLE:

TYPE TC: DIRECT BURIAL, 12AWG,
SIX CONDUCTOR

TO PUMP
GND L1 L2
PUMP POWER
MANUAL RUN
FEED
RETURN
ALARM

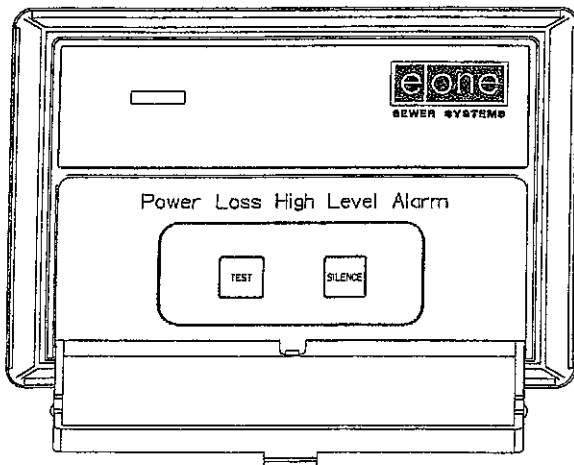
AD	SM	11/09/07	C	N/A
DR BY	CHK'D	DATE	ISSUE	SCAL

eone
SEWER SYSTEMS

SIMPLEX SENTRY, 240V 60Hz.
DOUBLE POLE POWER

LM000326

Remote Sentry Alarm Module



Description

The Remote Sentry Alarm module provides visual and audible indication when the water level inside the grinder pump tank reaches a predetermined level. It is ideally suited for installation where the outdoor alarm panel is located in an area that is infrequently inspected or obstructed from view. It may also be used with the E/One Indoor Grinder Pump Unit (IDU) in installations where the IDU is isolated in a basement or utility room.

The Remote Sentry Alarm module continues to operate during a loss in AC power when used with the following E/One products:

E/One Sentry alarm panels with contact group

Model 255-3 and Model 265-1 alarm panels

IDU stations delivered since 2002

All E/One Protect and PreSTAT alarm panels

All E/One power-loss alarm panels with "switch-over" dry contacts

Standard Features

Low profile attractive case

Lithium battery operated

Audible alarm (70 dB)

Visual alarm

Push to silence audible alarm switch

Push to test visual & audible alarm

Low Battery audible/visual indications

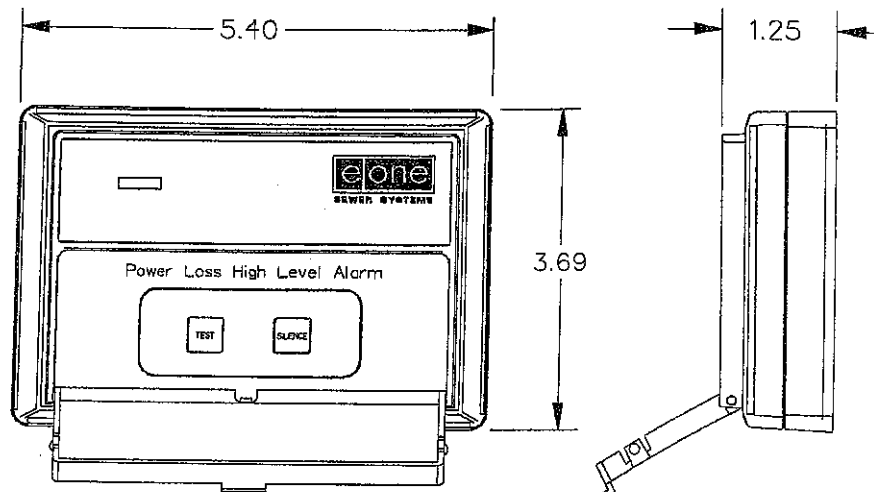
Optional Features

Operates without AC power if used with E/One power-loss alarm panels or IDU stations delivered since 2002

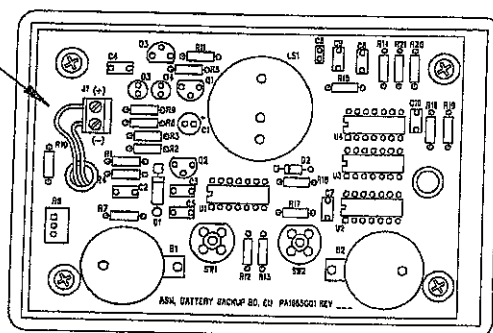
Note: Wireless cores — The Remote Sentry Indoor Alarm Module will operate as a power-loss indicator in the event of a power outage (no power to core)

REMOTE SENTRY

LOW PROFILE CASE
LITHIUM BATTERY OPERATED
AUDIBLE ALARM
PUSH TO SILENCE ALARM
PUSH TO TEST ALARM



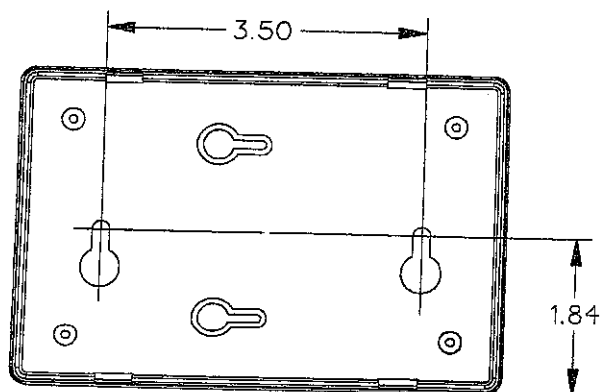
CONNECTION
FROM
ALARM PANEL



REMOTE SENTRY
SHOWN
WITHOUT COVER

SPECIFICATIONS

12 VDC POWER SUPPLY - (4) LITHIUM CELLS
THERMOPLASTIC ENCLOSURE - LOW PROFILE WALL MOUNT
(5.4" W x 3.69" H x 1.25" D)



MOUNTING DIMENSIONS



DRL	CAH	12/12/01	-	1/2
DR BY	CHK'D	DATE	ISSUE	SCALE

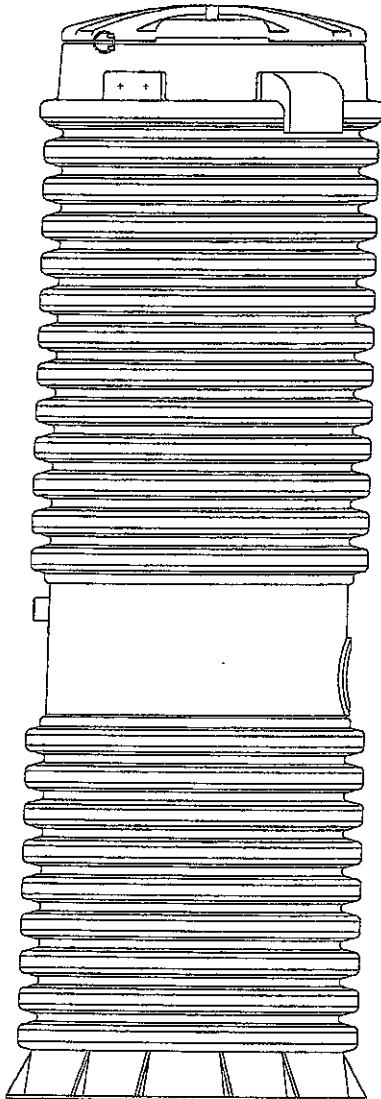
eone
SEWER SYSTEMS

REMOTE SENTRY

LM000196

E/ONE **EXTREME**

S E R I E S



Limited Warranty

For E/One Extreme D-Series,
W-Series & Upgrade

Environment One Corporation offers a limited warranty that guarantees its product to be free from defects in material and factory workmanship for a period of two years from the date of installation, or 27 months from the date of shipment, whichever occurs first, provided the product is properly installed, serviced and operated under normal conditions and according to manufacturer's instructions. Repair or parts replacement required as a result of such defect will be made free of charge during this period upon return of the defective parts or equipment to the manufacturer or its nearest authorized service center.

Model Number: _____
Serial Number: _____
Installation Date: _____



e|one
SEWER SYSTEMS

2773 Balltown Rd • Niskayuna NY USA 12309
(01) 518.346.6161 • www.eone.com

NA0071P01 Rev. -