

LEE'S SUMMIT POLICE RENOVATION

10 NE TUDOR RD
 LEE'S SUMMIT, MO 64086

HOEFER WELKER

HW PROJECT NO: 138191

OWNER

CITY OF LEE'S SUMMIT
 220 SE GREEN
 LEE'S SUMMIT, MO 64083
 816.969.1000

ARCHITECT

HOEFER WELKER
 4622 PENNSYLVANIA AVENUE, SUITE 1400
 KANSAS CITY, MO 64112
 P: 913.307.3700

CONSTRUCTION MANAGER

TITAN BUILT
 8207 MELROSE DRIVE, SUITE 200
 LENEXA, KANSAS 66214
 P: 913.782.6700

MEPT ENGINEER

HOEFER WELKER
 4622 PENNSYLVANIA AVENUE, SUITE 1400
 KANSAS CITY, MO 64112
 P: 913.307.3700



PACKAGE 3 - RTCC

MARCH 17, 2025

RTCC	
X-002	COVER SHEET RTCC
G-011	GENERAL INFORMATION
G-021	ACCESSIBILITY GUIDELINES
G-301	PARTITION TYPES
G-401	SPECIFICATIONS
AD403	ENLARGED DEMO PLAN - RTCC
A-403	ENLARGED, FFE & FINISH PLANS
MG001	MECHANICAL LEGEND AND GENERAL NOTES
MD402	ENLARGED HVAC DEMOLITION PLANS
M-402	ENLARGED HVAC FLOOR PLANS
EG001	ELECTRICAL LEGEND AND GENERAL NOTES
ED402	ENLARGED ELECTRICAL DEMOLITION PLANS
E-403	ENLARGED ELECTRICAL PLANS
E-601	PANELBOARD SCHEDULES



GENERAL INFORMATION NOTES:

- ALL CONTRACTORS AND THEIR SUPERVISORY PERSONNEL SHALL REVIEW THE GENERAL AND SUPPLEMENTARY CONDITIONS TO THE CONTRACT.
- ALL WORK SHALL CONFORM WITH APPLICABLE BUILDING CODES, REGULATIONS AND ORDINANCES.
- CONTRACTOR SHALL OBTAIN ALL REQUIRED BUILDING AND OCCUPANCY PERMITS.
- CONTRACTOR SHALL BE SOLELY RESPONSIBLE FOR THE MEANS, METHODS, AND SEQUENCES OF CONSTRUCTION AND THE SAFETY OF ALL CONSTRUCTION PERSONNEL AND VISITORS.
- DRAWINGS CONTAINED IN THIS SET SHALL NOT BE REPRODUCED FOR SHOP DRAWINGS. COPIES OF THESE DRAWINGS SUBMITTED AS SHOP DRAWINGS WILL BE REJECTED AND RETURNED TO THE CONTRACTOR.
- EACH INSTALLER MUST EXAMINE SUBSTRATE AND/OR CONDITIONS UNDER WHICH THE WORK WILL BE INSTALLED AND REPORT TO THE CONTRACTOR IN WRITING ANY CONDITIONS DETRIMENTAL TO THE PROPER AND TIMELY EXECUTION OF THAT INSTALLER'S WORK. DO NOT PROCEED UNTIL UNSATISFACTORY CONDITIONS ARE CORRECTED. COMMENCING WITH INSTALLATION SHALL CONSTITUTE ACCEPTANCE OF THE SUBSTRATE AND/OR CONDITIONS.
- DO NOT SCALE DRAWINGS. FOLLOW WRITTEN DIMENSIONS AND NOTES. CONTACT ARCHITECT FOR CLARIFICATIONS, IF REQUIRED.
- DIMENSIONS SHOWN ON THE FLOOR PLAN ARE TO THE FACE OF MASONRY (FOM), FACE OF CONCRETE WALLS (FCO), AND COLUMN GRID LINES, UNLESS NOTED OR SHOWN OTHERWISE.
- FOR WOOD CONSTRUCTION, DIMENSIONS SHOWN ON THE FLOOR PLAN ARE TO THE FACE OF STUD BOARD WALL (FOG), UNLESS NOTED OR SHOWN OTHERWISE.
- NOTE: ALL WALL THICKNESSES ARE ACTUAL DIMENSIONS.
- "TYPICAL" AS USED IN THESE DOCUMENTS SHALL MEAN THAT THE CONDITION OR DIMENSION IS REPRESENTATIVE OF, OR THE SAME, FOR SIMILAR CONDITIONS THROUGHOUT.
- IF THERE IS A DISCREPANCY BETWEEN SMALL SCALE AND LARGE SCALE DRAWINGS (PLAN, SECTION & DETAIL DRAWINGS, ETC.) - CONTACT ARCHITECT FOR CLARIFICATION. FOR BIDDING PURPOSES, THE MOST EXPENSIVE AND/OR STRICTEST REQUIREMENTS SHALL GOVERN FOR CLARIFICATIONS DURING CONSTRUCTION. THE MOST EXPENSIVE AND/OR STRICTEST REQUIREMENTS SHALL GOVERN FOR CLARIFICATIONS DURING CONSTRUCTION. THE MOST EXPENSIVE AND/OR STRICTEST REQUIREMENTS SHALL GOVERN FOR CLARIFICATIONS DURING CONSTRUCTION. THE MOST EXPENSIVE AND/OR STRICTEST REQUIREMENTS SHALL GOVERN FOR CLARIFICATIONS DURING CONSTRUCTION.
- ANY DISCREPANCIES BETWEEN THE DRAWINGS AND SPECIFICATIONS - CONTACT ARCHITECT FOR CLARIFICATION. FOR BIDDING PURPOSES, THE MOST EXPENSIVE AND/OR STRICTEST REQUIREMENTS SHALL GOVERN FOR CLARIFICATIONS DURING CONSTRUCTION. THE MOST EXPENSIVE AND/OR STRICTEST REQUIREMENTS SHALL GOVERN FOR CLARIFICATIONS DURING CONSTRUCTION. THE MOST EXPENSIVE AND/OR STRICTEST REQUIREMENTS SHALL GOVERN FOR CLARIFICATIONS DURING CONSTRUCTION.
- ANY DISCREPANCIES BETWEEN THE DRAWINGS AND ACTUAL CONDITIONS SHALL BE REPORTED TO THE ARCHITECT IN WRITING FOR RESOLUTION, PRIOR TO PROCEEDING WITH THE WORK.
- ANY AND ALL DISCREPANCIES SHALL BE REPORTED TO THE ARCHITECT IN WRITING FOR RESOLUTION, PRIOR TO PROCEEDING WITH THE WORK. IN THESE INSTANCES, NO CHANGE ORDERS OR EXTENSIONS OF TIME WILL BE ALLOWED OR ACCEPTED FOR PROCEEDING WITH THE WORK WITHOUT THE ARCHITECT'S WRITTEN DIRECTION AND APPROVAL. ALSO, CONTRACTOR MUST REMOVE AND/OR REPLACE ANY UNAUTHORIZED WORK, AS INDICATED BY THE ARCHITECT, AT NO ADDITIONAL COST TO THE OWNER.
- ALL DISSIMILAR METAL MATERIALS SHALL BE ISOLATED WITH AN APPROVED NONMETAL ISOLATION MATERIAL.
- OPEN EXTERIOR JOINTS AROUND WINDOW AND DOOR FRAMES, BETWEEN WALLS AND FOUNDATIONS, BETWEEN WALL PANELS, AND AT PENETRATIONS OF UTILITIES THROUGH THE BUILDING ENVELOPE, SHALL BE SEALED, CAULKED, FLASHED OR WEATHERSTRIPPED AS REQUIRED FOR COMPATIBILITY WITH ADJACENT MATERIALS & TO ELIMINATE AIR LEAKAGE AND WATER ENTRY.
- PROVIDE SEALANT AND/OR CAULKING BETWEEN DISSIMILAR ADJOINING INTERIOR MATERIALS (I.E. WINDOW SILLS TO GYP. BD., ACT CEILINGS TO MASONRY WALLS, ETC.)
- DOOR OPENINGS NOT LOCATED BY DIMENSION SHALL BE CENTERED IN WALL SHOWN OR LOCATED 4 INCHES FROM FINISH WALL TO EDGE OF DOOR FRAME, ALWAYS ALLOWING A MINIMUM OF 18" FROM THE PULL SIDE OF THE DOOR TO THE INTERSECTING WALL.
- CONTRACTOR SHALL VERIFY THE LOCATIONS OF ALL EXISTING UNDERGROUND UTILITIES AND THEIR SERVICE CONNECTIONS WITH THE PROPER UTILITY COMPANY.
- THE CONTRACTOR IS RESPONSIBLE TO COORDINATE FINAL SIZE AND DEPTH OF THE ELEVATOR PIT, SHAFT, RAIL SUPPORT, HOIST SUPPORT, OVERRUN AND MISC. ELEVATOR REQUIREMENTS WITH THE SELECTED ELEVATOR MANUFACTURER/SUPPLIER.
- CONTRACTOR SHALL COORDINATE SIZE, LOCATIONS AND NUMBER OF ALL ROOF OPENINGS AND ROOF ACCESSORIES WITH ALL OTHER TRADES. REFER TO THE ARCHITECTURAL, STRUCTURAL, PLUMBING, MECHANICAL AND ELECTRICAL DRAWINGS.
- LOCATIONS AND SIZES OF ALL CONCRETE MECHANICAL AND ELECTRICAL PADS SHALL BE COORDINATED BY THE MECHANICAL AND ELECTRICAL CONTRACTORS, WITH THE SELECTED EQUIPMENT MANUFACTURER/SUPPLIER, AND ARE TO BE APPROVED BY THE ARCHITECT PRIOR TO PROCEEDING WITH THE WORK.
- EXCEPT AT FIRE-RATED PARTITIONS, ALL WALL AND COLUMN GYPSUM BOARD FACING SHALL BE HELD AT 5/8 INCH BELOW STRUCTURE, UNLESS DETAILED OR NOTED OTHERWISE.
- AT ALL TELECOMMUNICATION ROOMS: PROVIDE 3/4" X 8'-0" HIGH FIRE-RETARDANT-TREATED WOOD SHEATHING OR PROVIDE PLYWOOD OVER NON-COMBUSTIBLE SHEATHING, BOTTOM TO BE LOCATED AT 4" A.F.F. VERIFY LENGTHS AND LOCATIONS WITH ELECTRICAL DRAWINGS.
- GLASS DOORS, ADJACENT PANELS AND ALL GLAZED OPENINGS WITHIN 1'-6" OF THE FLOOR, AND WITHIN A 24-INCH ARC OF EITHER VERTICAL EDGE OF A DOOR, ETC., SHALL BE SAFETY GLAZING AS APPROVED FOR IMPACT BY APPLICABLE BUILDING CODES, AND SHALL BE LABELED AS SUCH.
- ALL CEILING HEIGHTS AS SHOWN ON PLANS AND DETAILS ARE FROM SLAB OR TILE FLOOR (FINISHED FLOOR) TO FINISH CEILING.
- PROVIDE INDEPENDENT FRAMING & ATTACHMENTS TO THE STRUCTURE - ADEQUATE TO SUPPORT THE CEILING SYSTEM, LIGHT FIXTURES, DUCTS, DIFFUSERS, SPRINKLER PIPING AND BUS DUCTS.
- ALL CLOSETS AND ALCOVES WITHOUT A SPACE IDENTIFICATION NUMBER SHALL HAVE THE SAME FINISHES AS ADJOINING SPACES.
- CONTRACTOR TO INSTALL WOOD BLOCKING AND PLYWOOD AS REQUIRED FOR THE MOUNTING OF ALL TOILET ACCESSORIES, MILLWORK CASEWORK, AV EQUIPMENT, AND MEP ITEMS, ETC.
- RE: SPECIFICATIONS FOR ALL REQUIRED TESTING AND INSPECTIONS.
- ANY ALL PROPRIETARY PRODUCTS DESCRIBED AND/OR DRAWN IN THE DOCUMENTS (BUT NOT SPECIFIED) ARE TO MEET THE MANUFACTURER'S STANDARD CRITERIA WHICH IS NOT LIMITED TO THE FOLLOWING: PERFORMANCE REQUIREMENTS, QUALITY ASSURANCE REQUIREMENTS, APPLICABLE CODES AND INDUSTRY STANDARDS, FABRICATION, ASSEMBLY, HANDLING, DELIVERY, STORAGE, INSTALLATION, OPERATION, ADJUSTMENTS, ETC. PROVIDE THE MANUFACTURER'S STANDARD WARRANTY AND STANDARD FINISH WARRANTY, PROVIDE PRODUCT DATA, SHOP DRAWINGS, SAMPLES, AND MAINTENANCE DATA AS REQUIRED. REFER TO DIVISION 01 SPEC. SECTION WHICH ALSO APPLY - SUCH AS SUBSTITUTION PROCEDURES, SUBMITTAL PROCEDURES, QUALITY REQUIREMENTS, REFERENCES, EXECUTION, AND CLOSEOUT PROCEDURES. NOTE: ANY SUBSTITUTIONS MUST MEET THE DESIGN INTENT, AS WELL AS THE CRITERIA DESCRIBED ABOVE.

SYMBOLS:

DISCIPLINE DESIGNATORS:

G - (GENERAL)	AF (FURNITURE / EQUIPMENT)
C - (CIVIL)	AG (GRAPHICS)
L - (LANDSCAPE)	OQ (EQUIPMENT FOOD SERVICE)
S - (STRUCTURAL)	OH (EQUIPMENT HOSPITAL)
AS (ARCHITECTURAL SITE)	P - (PLUMBING)
XD (DEMOLITION)	M - (MECHANICAL)
A - (ARCHITECTURAL)	E - (ELECTRICAL)
AC (ARCHITECTURAL CEILING)	T - (TECHNOLOGY)
AJ (ARCHITECTURAL FINISHES)	

ELEVATION SYMBOLS:

SHEET NUMBER: A-201
DIRECTION: A1

EXTERIOR: SHEET NUMBER: A-451
DRAWING NUMBER: A1

INTERIOR: SHEET NUMBER: A-321
DIRECTION: A1

WALL SECTION AND DETAIL SYMBOLS:

DRAWING NUMBER: A-3
SHEET NUMBER: A3
DIRECTION: A1

BUILDING SECTIONS:

BUILDING SECTION NUMBER: F1
SHEET NUMBER: A-301
DIRECTION: A1

REVISION MARK/ CLOUD:

REVISION NUMBER: 1

BUILDING ADDITION NOTATION:

NEW EXISTING

KEY PLAN SYMBOL:

HATCHED AREA IS PART PLAN AS SHOWN ON SHEET

REFLECTED CEILING PLAN SYMBOLS:

9'-0" CEILING HEIGHT

GYP. BD.

SUSP. CEILING SYSTEM

SUPPLY AIR UP

SUPPLY AIR DOWN

RETURN / EXHAUST AIR UP

RETURN / EXHAUST AIR DOWN

LIGHT FIXTURE

CRITICAL LIGHT FIXTURE

LIFE SAFETY LIGHT FIXTURE WITH EMERGENCY BATTERY

INNERSCENE CIRCADIAN SKY FIXTURE

FLUORESCENT STRIP FIXTURE

CAN LIGHT

FIRE EXIT SIGN

CONTROL JOINT IN GYP BD CEILING

2'X4 LAY-IN CEILING

2'X2 LAY-IN CEILING

OPEN TO STRUCTURE

SYMBOLS - DOOR & FRAME TYPES/ WINDOW TYPES/ LOUVER TYPES/GLASS TYPES:

F1 - DOOR FRAME NUMBER SYMBOL (F1, F2, F3, ETC...)

A2 - WINDOW NUMBER SYMBOL (A-Z, AA, AB, AZ, BA, BB, BZ...)

L2 - LOUVER NUMBER SYMBOL (L1, L2, L3, ...)

14 - GLASS TYPES

CASEWORK SYMBOLS:

B10 - BASE CABINET TYPE.

24"D - BASE CABINET DEPTH.

W10 - WALL CABINET TYPE.

15"D - WALL CABINET DEPTH.

(WALL CABINETS, TALL CABINETS, ADJUSTABLE SHELVES, LOCKERS, ETC.)

WALL TYPE INDICATOR:

RE: WALL TYPE LEGEND ON G-301

MATCH LINE:

PART A

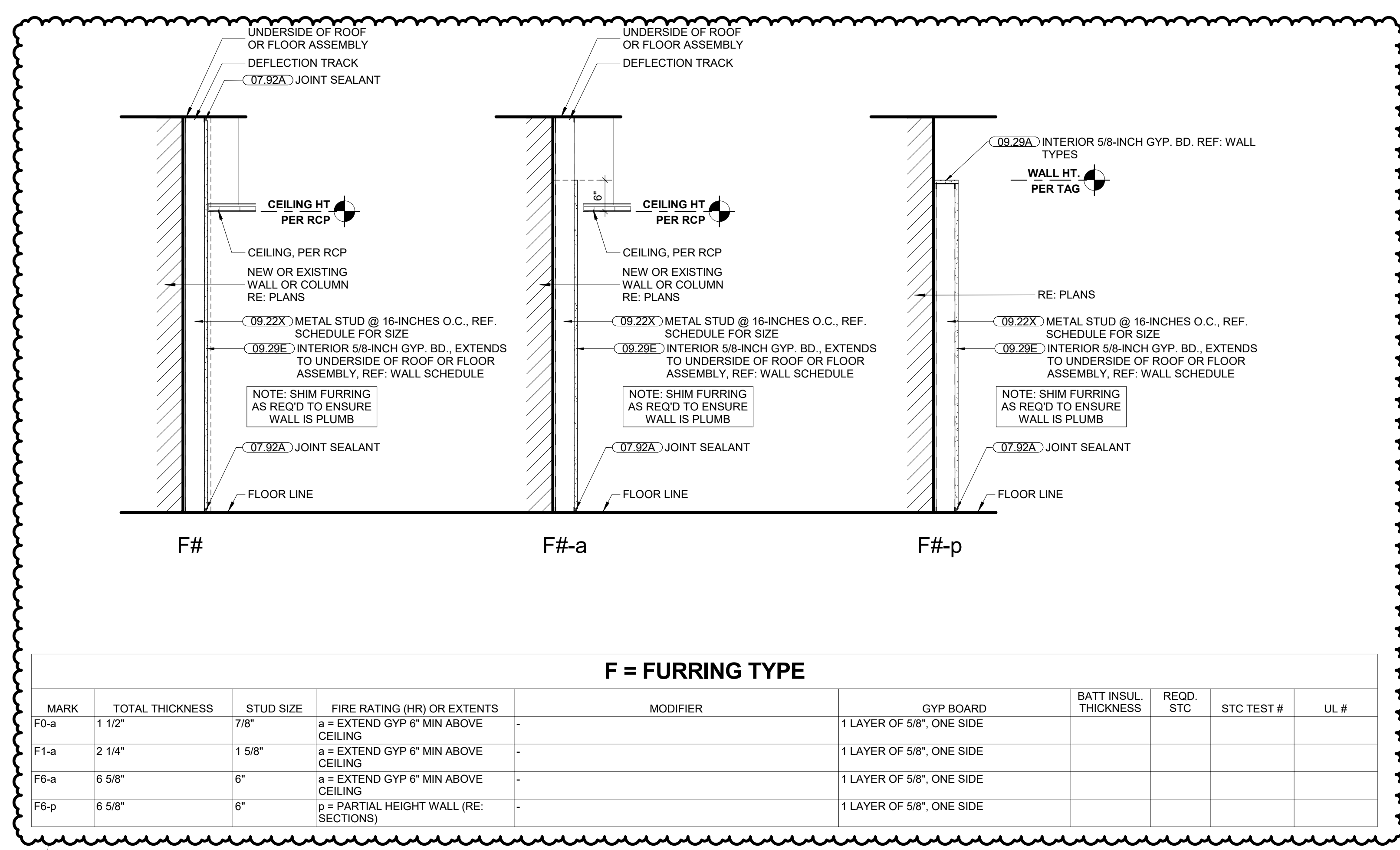
PART B

MATERIALS LEGEND:

	EARTH / COMPACT FILL
	GRAVEL / GRANULAR FILL
	CONCRETE
	SAND/ MORTAR/ PLASTER/ CUT STONE
	BRICK
	CONCRETE MASONRY UNIT
	STONE (ELEVATION)
	CAST STONE
	STEEL METAL
	FINISH WOOD
	CONT. FIRE RETARDANT WOOD BLOCKING/ ROUGH FRAMING
	DISCONTINUOUS FIRE RETARDANT WOOD BLOCKING / SHIM
	FIRE RETARDANT PLYWOOD
	BATT INSULATION
	ROOF INSULATION
	RIGID INSULATION
	MASONRY INSULATION
	EIFS (ELEVATION)
	FIREPROOFING
	COVER BOARD
	ACOUSTICAL TILE
	GYPSUM BOARD
	METAL / WALL PANELS
	SPANDELR GLASS

ABBREVIATIONS:

PERP	PERPENDICULAR
PL	PLATE / PROPERTY LINE
PLAS	PLASTER
PLUMB	PLUMBING
PLYWD	PLYWOOD
PNL	PANEL
POLY	POLYETHYLENE
PREFAB	PREFABRICATE (D)
PREFIN	PREFINISHED
PRELIM	PRELIMINARY
PREP	PREPARE (D)
PROJCT	PROJECT
PSF	POUNDS PER SQUARE FOOT
PSI	POUNDS PER SQUARE INCH
PT	PAINT, PRESSURE TREATED
PTD	PAINTED
PVC	POLYVINYL CHLORIDE
PVMT	PAVEMENT
QTY	QUANTITY
R	RISER / RADIUS / REVERSED
R/W	RIGHT OF WAY
RA	RETURN AIR
RCP	REFLECTED CEILING PLAN
RD	ROOF DRAIN
RE	REFERENCE / REFER TO
REC (D)	RECEIVE (D)
REF	REFRIGERATOR
RENF	REINFORCE (D), (ING)
REOD	REQUIRED
REQMT	REQUIREMENT
REVISED	REVISED / REVISION
RFG	ROOFING
RH	RIGHT HAND
ROOM	ROOM
RO	ROUGH OPENING
RTU	ROOF TOP UNIT
S	SOUTH
SA	ACOUSTICAL WALL PANEL
SAN	SANITARY SEWER
S&D	SOLID CORE
SCH	SCHEDULE
SCN	SCREEN
SECT	SECTION
SF	SQUARE FOOT (SQ FT)
SHM	SHIM
SHT	SHEET
SIM	SIMILAR
SOF	SPRAY-ON FIREPROOFING
SOG	SLAB ON GRADE
SP	TOILET PARTITION
SP HD	SPRINKLER HEAD
SPC	SPECIFICATION (S)
SPKR	SPEAKER
SQ	SQUARE
SS	STAINLESS STEEL
SS	SILLS
STC	SOUND TRANSM COEFFICIENT
STD	STANDARD
STG	STEELING
STL	STEEL
STOR	STORAGE
STRUCT	STRUCTURE / STRUCTURAL
SUBFLR	SUBFLOOR
SUSP	SUSPENDED
SW	WINDOW TREATMENTS
SWGR	SWITCH GEAR
SY	SQUARE YARD (SQ YD)
SYM	SYMMETRICAL
SYS	SYSTEM
T	TREAD
T&B	TOP & BOTTOM
T&G	TONGUE & GROOVE
TEL	TELEPHONE
TEL	TEMPORARY / TEMPERED
THK	THICK (NESS)
THRU	THROUGH
T&BD	TACKBOARD
TOP OF	TOP OF
TOD	TOP OF DECK
TOM	TOP OF MASONRY
TOP	TOP OF PARAPET
TOS	TOP OF STEEL
TOW	TOP OF WALL
TRANSF	TRANSFORMER
TRANSM	TRANSMISSION
TYP	TYPICAL
UH	UNIT HEATER
UNFIN	UNFINISHED
UNO	UNLESS NOTED OTHERWISE
VB	VAPOR BARRIER (VPR BR)
VERT	VERTICAL
VEST	VESTIBULE
VIF	VERIFY IN FIELD
VTR	VERIFY THROUGH ROOF
W	WEST, WIDTH, WIDE, WATER
W	WITH
WIN	WITHIN
W/O	WITHOUT
WC	WATER CLOSET
WD	WOOD
WE	WALL PAINT - EPOXY
WH	WALL HYDRANT
WINDW	WINDOW
WP	WALL PAINT
WR	WATER RESISTENT
WT	WALL TILE, WHITE
WW	WALL COVERING
YD	YARD
OD	OUTSIDE DIAMETER
OH	OVERHEAD / OPPOSITE HAND
OPNG	OPENING
OPP	OPPOSITE
ORD	OVERFLOW ROOF DRAIN
OZ	OUNCE
OC	ON CENTER
OD	OUTSIDE DIAMETER
OH	OVERHEAD / OPPOSITE HAND
OPNG	OPENING
OPP	OPPOSITE
ORD	OVERFLOW ROOF DRAIN
OZ	OUNCE
OC	ON CENTER
OD	OUTSIDE DIAMETER
OH	OVERHEAD / OPPOSITE HAND
OPNG	OPENING
OPP	OPPOSITE
ORD	OVERFLOW ROOF DRAIN
OZ	OUNCE
OC	ON CENTER
OD	OUTSIDE DIAMETER
OH	OVERHEAD / OPPOSITE HAND
OPNG	OPENING
OPP	OPPOSITE
ORD	OVERFLOW ROOF DRAIN
OZ	OUNCE
OC	ON CENTER
OD	OUTSIDE DIAMETER
OH	OVERHEAD / OPPOSITE HAND
OPNG	OPENING
OPP	OPPOSITE
ORD	OVERFLOW ROOF DRAIN
OZ	OUNCE
OC	ON CENTER
OD	OUTSIDE DIAMETER
OH	OVERHEAD / OPPOSITE HAND
OPNG	OPENING
OPP	OPPOSITE
ORD	OVERFLOW ROOF DRAIN
OZ	OUNCE
OC	ON CENTER
OD	OUTSIDE DIAMETER
OH	OVERHEAD / OPPOSITE HAND
OPNG	OPENING
OPP	OPPOSITE
ORD	OVERFLOW ROOF DRAIN
OZ	OUNCE
OC	ON CENTER
OD	OUTSIDE DIAMETER
OH	OVERHEAD / OPPOSITE HAND
OPNG	OPENING
OPP	OPPOSITE
ORD	OVERFLOW ROOF DRAIN
OZ	OUNCE
OC	ON CENTER
OD	OUTSIDE DIAMETER
OH	OVERHEAD / OPPOSITE HAND
OPNG	OPENING
OPP	OPPOSITE
ORD	OVERFLOW ROOF DRAIN
OZ	OUNCE
OC	ON CENTER
OD	OUTSIDE DIAMETER
OH	OVERHEAD / OPPOSITE HAND
OPNG	OPENING
OPP	OPPOSITE
ORD	OVERFLOW ROOF DRAIN
OZ	OUNCE
OC	ON CENTER
OD	OUTSIDE DIAMETER
OH	OVERHEAD / OPPOSITE HAND
OPNG	OPENING
OPP	OPPOSITE
ORD	OVERFLOW ROOF DRAIN
OZ	OUNCE
OC	ON CENTER
OD	OUTSIDE DIAMETER
OH	OVERHEAD / OPPOSITE HAND
OPNG	OPENING
OPP	OPPOSITE
ORD	OVERFLOW ROOF DRAIN
OZ	OUNCE
OC	ON CENTER
OD	OUTSIDE DIAMETER
OH	OVERHEAD / OPPOSITE HAND
OPNG	OPENING
OPP	OPPOSITE
ORD	OVERFLOW ROOF DRAIN
OZ	OUNCE
OC	ON CENTER
OD	OUTSIDE DIAMETER
OH	OVERHEAD / OPPOSITE HAND
OPNG	OPENING
OPP	OPPOSITE
ORD	OVERFLOW ROOF DRAIN
OZ	OUNCE
OC	ON CENTER
OD	OUTSIDE DIAMETER
OH	OVERHEAD / OPPOSITE HAND
OPNG	OPENING
OPP	OPPOSITE
ORD	OVERFLOW ROOF DRAIN
OZ	OUNCE
OC	ON CENTER
OD	OUTSIDE DIAMETER
OH	OVERHEAD / OPPOSITE HAND
OPNG	OPENING
OPP	OPPOSITE
ORD	OVERFLOW ROOF DRAIN
OZ	OUNCE
OC	ON CENTER
OD	OUTSIDE DIAMETER
OH	OVERHEAD / OPPOSITE HAND
OPNG	OPENING
OPP	OPPOSITE
ORD	OVERFLOW ROOF DRAIN
OZ	OUNCE
OC	ON CENTER
OD	OUTSIDE DIAMETER
OH	OVERHEAD / OPPOSITE HAND
OPNG	OPENING
OPP	OPPOSITE
ORD	OVERFLOW ROOF DRAIN
OZ	OUNCE
OC	ON CENTER
OD	OUTSIDE DIAMETER
OH	OVERHEAD / OPPOSITE HAND
OPNG	OPENING
OPP	OPPOSITE
ORD	OVERFLOW ROOF DRAIN
OZ	OUNCE
OC	ON CENTER
OD	OUTSIDE DIAMETER
OH	OVERHEAD / OPPOSITE HAND
OPNG	OPENING
OPP	OPPOSITE
ORD	OVERFLOW ROOF DRAIN
OZ	OUNCE
OC	ON CENTER
OD	OUTSIDE DIAMETER
OH	OVERHEAD / OPPOSITE HAND
OPNG	OPENING
OPP	OPPOSITE
ORD	OVERFLOW ROOF DRAIN
OZ	OUNCE
OC	ON CENTER
OD	OUTSIDE DIAMETER
OH	OVERHEAD / OPPOSITE HAND
OPNG	OPENING
OPP	OPPOSITE
ORD	OVERFLOW ROOF DRAIN
OZ	OUNCE
OC	ON CENTER
OD	OUTSIDE DIAMETER
OH	OVERHEAD / OPPOSITE HAND
OPNG	OPENING
OPP	OPPOSITE
ORD	OVERFLOW ROOF DRAIN
OZ	OUNCE
OC	ON CENTER
OD	OUTSIDE DIAMETER
OH	OVERHEAD / OPPOSITE HAND
OPNG	OPENING
OPP	OPPOSITE
ORD	OVERFLOW ROOF DRAIN
OZ	OUNCE
OC	ON CENTER
OD	OUTSIDE DIAMETER
OH	OVERHEAD / OPPOSITE HAND
OPNG	OPENING
OPP	OPPOSITE
ORD	OVERFLOW ROOF DRAIN
OZ	OUNCE
OC	ON CENTER
OD	OUTSIDE DIAMETER
OH	OVERHEAD / OPPOSITE HAND
OPNG	OPENING
OPP	OPPOSITE
ORD	OVERFLOW ROOF DRAIN
OZ	OUNCE
OC	ON CENTER
OD	OUTSIDE DIAMETER
OH	OVERHEAD / OPPOSITE HAND
OPNG	OPENING
OPP	OPPOSITE
ORD	OVERFLOW ROOF DRAIN
OZ	OUNCE
OC	ON CENTER
OD	OUTSIDE DIAMETER
OH	OVERHEAD / OPPOSITE HAND
OPNG	OPENING
OPP	OPPOSITE
ORD	OVERFLOW ROOF DRAIN
OZ	OUNCE
OC	ON CENTER
OD	OUTSIDE DIAMETER
OH	OVERHEAD / OPPOSITE HAND
OPNG	OPENING
OPP	OPPOSITE
ORD	OVERFLOW ROOF DRAIN
OZ	OUNCE
OC	ON CENTER
OD	OUTSIDE DIAMETER
OH	OVERHEAD / OPPOSITE HAND
OPNG	OPENING
OPP	OPPOSITE
ORD	OVERFLOW ROOF DRAIN
OZ	OUNCE
OC	ON CENTER
OD	OUTSIDE DIAMETER
OH	OVERHEAD / OPPOSITE HAND
OPNG	OPENING
OPP	OPPOSITE
ORD	OVERFLOW ROOF DRAIN
OZ	OUNCE
OC	ON CENTER
OD	OUTSIDE DIAMETER
OH	OVERHEAD / OPPOSITE HAND
OPNG	OPENING
OPP	OPPOSITE
ORD	OVERFLOW ROOF DRAIN
OZ	OUNCE
OC	ON CENTER
OD	OUTSIDE DIAMETER
OH	OVERHEAD / OPPOSITE HAND
OPNG	OPENING
OPP	OPPOSITE
ORD	OVERFLOW ROOF DRAIN
OZ	OUNCE
OC	ON CENTER
OD	OUTSIDE DIAMETER
OH	OVERHEAD / OPPOSITE HAND
OPNG	OPENING
OPP	OPPOSITE
ORD	OVERFLOW ROOF DRAIN
OZ	OUNCE
OC	ON CENTER
OD	OUTSIDE DIAMETER
OH	OVERHEAD / OPPOSITE HAND
OPNG	OPENING
OPP	OPPOSITE
ORD	OVERFLOW ROOF DRAIN
OZ	OUNCE
OC	ON CENTER
OD	OUTSIDE DIAMETER
OH	OVERHEAD / OPPOSITE HAND
OPNG	OPENING
OPP	OPPOSITE
ORD	OVERFLOW ROOF DRAIN
OZ	OUNCE
OC	ON CENTER
OD	OUTSIDE DIAMETER
OH	OVERHEAD / OPPOSITE HAND
OPNG	OPENING
OPP	OPPOSITE
ORD	OVERFLOW ROOF DRAIN
OZ	OUNCE
OC	ON CENTER
OD	OUTSIDE DIAMETER
OH	OVERHEAD / OPPOSITE HAND
OPNG	OPENING
OPP	OPPOSITE
ORD	OVERFLOW ROOF DRAIN
OZ	OUNCE
OC	ON CENTER
OD	OUTSIDE DIAMETER
OH	OVERHEAD / OPPOSITE HAND
OPNG	OPENING
OPP	OPPOSITE
ORD	OVERFLOW ROOF DRAIN
OZ	OUNCE
OC	ON CENTER
OD	OUTSIDE DIAMETER
OH	OVERHEAD / OPPOSITE HAND
OPNG	OPENING
OPP	OPPOSITE
ORD	OVERFLOW ROOF DRAIN
OZ	OUNCE
OC	ON CENTER
OD	OUTSIDE DIAMETER
OH	OVERHEAD / OPPOSITE HAND
OPNG	OPENING



F = FURRING TYPE									
MARK	TOTAL THICKNESS	STUD SIZE	FIRE RATING (HR) OR EXTENTS	MODIFIER	GYP BOARD	BATT INSUL. THICKNESS	RECD. STC	STC TEST #	UL #
F0-a	1 1/2"	7/8"	a = EXTEND GYP 6" MIN ABOVE CEILING	-	1 LAYER OF 5/8", ONE SIDE				
F1-a	2 1/4"	1 5/8"	a = EXTEND GYP 6" MIN ABOVE CEILING	-	1 LAYER OF 5/8", ONE SIDE				
F6-a	6 5/8"	6"	a = EXTEND GYP 6" MIN ABOVE CEILING	-	1 LAYER OF 5/8", ONE SIDE				
F6-p	6 5/8"	6"	p = PARTIAL HEIGHT WALL (RE: SECTIONS)	-	1 LAYER OF 5/8", ONE SIDE				

PARTITION TYPE LEGEND:

P3-1w

↑↑↑↑↑

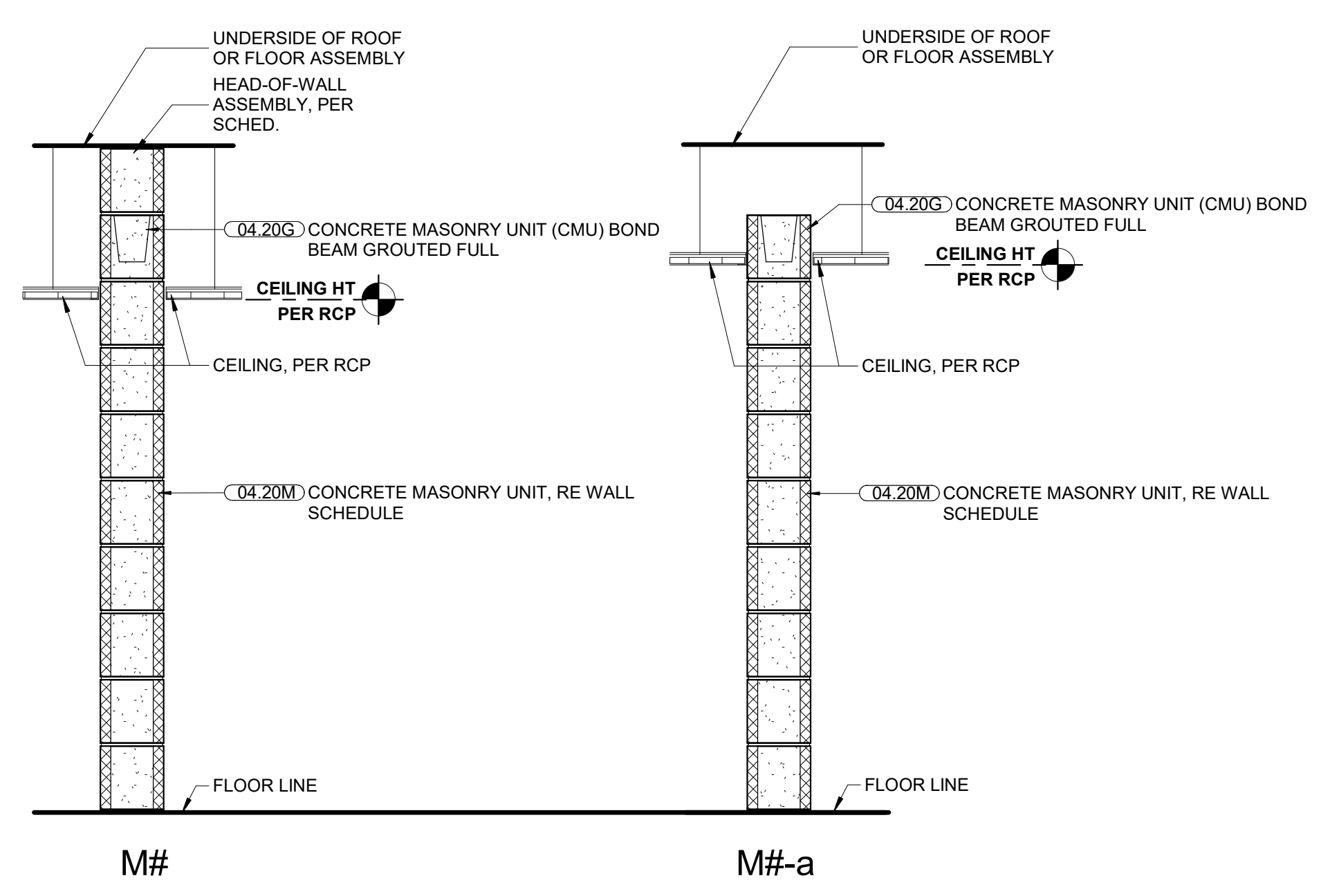
MODIFIER
 EXAMPLE:
 w = 2 LAYERS GYPSUM BOARD ON BOTH SIDES

FIRE RATING/WALL EXTENT
 FIRE RATING (ONE-DIGIT CODE) WILL ONLY SHOW IN THE TAG. IF A RATING IS REQUIRED
 1 = 1-HR RATING
 a = WALL EXTENDS 6" (RE: ELEVATIONS)
 p = PARTIAL HEIGHT WALL (RE: ELEVATIONS)

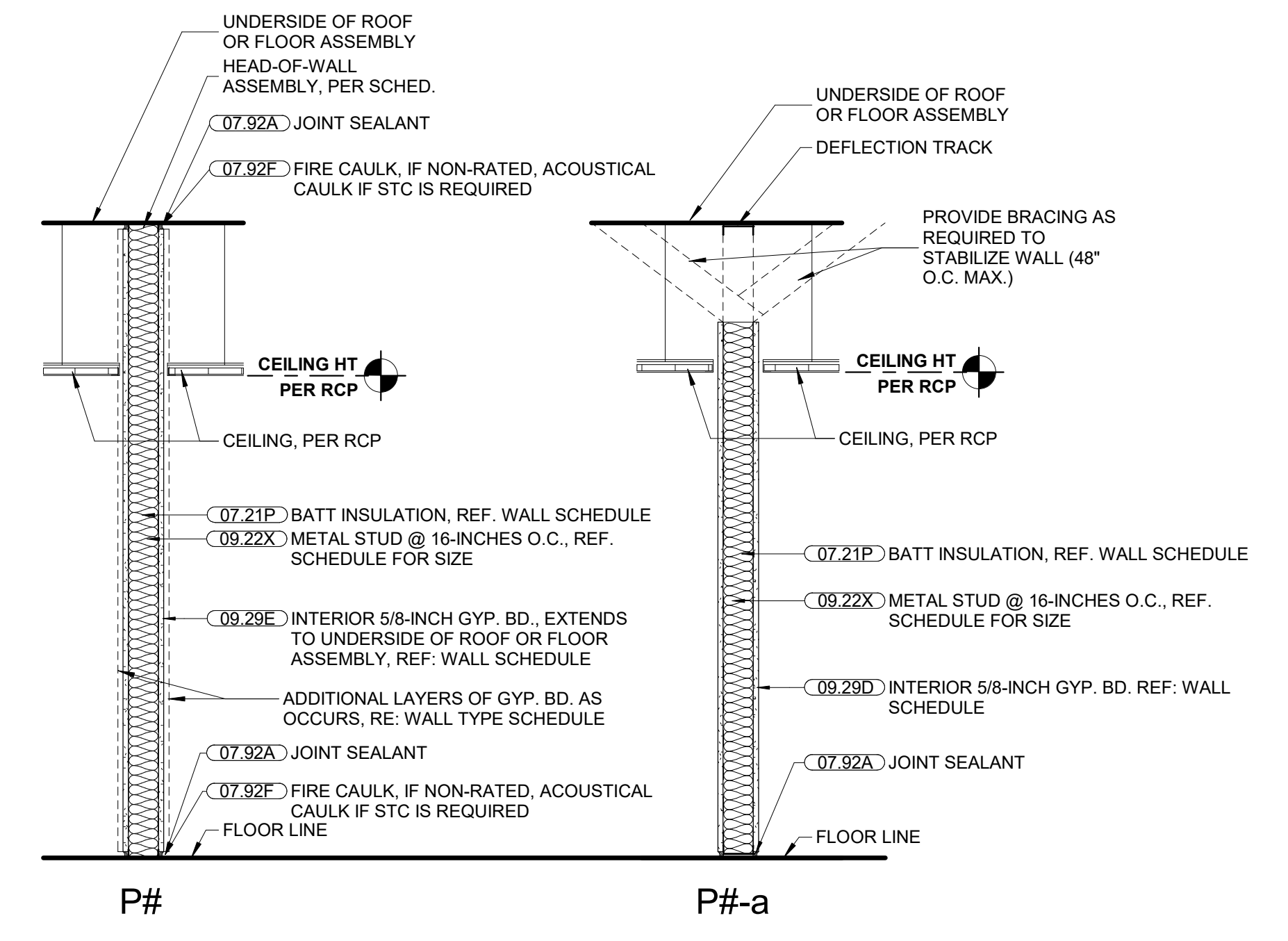
STUD SIZE
 EXAMPLE:
 3 = 3 5/8" METAL STUD

PARTITION TYPE DESIGNATION
 EXAMPLE:
 p = GYP BD PARTITION

- GENERAL WALL TYPE NOTES:**
- RE: SHEET G-011 FOR ADDITIONAL GENERAL NOTES THAT ARE APPLICABLE.
 - RE: LIFE SAFETY PLANS FOR RATED WALL LOCATIONS.
 - RE: WALL TYPE DETAIL SHEET FOR TYPICAL WALL DETAILS, HEAD-OF-WALL DETAILS, AND ADDITIONAL WALL TYPE INFORMATION.
 - COORDINATE METAL STUD GAUGE WITH PRE-APPROVED EQUIPMENT ANCHORAGE. WHERE A DISCREPANCY OCCURS, THE MORE STRINGENT REQUIREMENT SHALL GOVERN.
 - WHERE "ACOUSTIC SEALANT" IS INDICATED ON WALL TYPES, PROVIDE ACOUSTIC (SOUND) SEALANT ABOVE TOP TRACK, UNDER BOTTOM TRACK, AND AT ALL PENETRATIONS (BOTH SIDES).
 - WHERE "FIRE CAULK" IS INDICATED ON WALL TYPES, PROVIDE FIRE-RATED SEALANT ABOVE TOP TRACK, UNDER BOTTOM TRACK, AT ALL PENETRATIONS (BOTH SIDES), AND AS REQUIRED BY FIRE RATING UL NUMBER.
 - EXTEND FIRE-RATED WALL CONSTRUCTION BEHIND NON-RATED RECESSED OR BUILT-IN EQUIPMENT, SUCH AS FIRE EXTINGUISHER CABINETS (FEC), ELECTRICAL WATER COOLERS (EWC), ELECTRICAL PANELS, ETC., UNLESS NOTED OTHERWISE. REFER TO THE 5-SIDED BOX DETAIL ON THE WALL TYPE DETAILS SHEET.
 - PROVIDE AND INSTALL ALL STIFFENERS, BRACING, BACK-UP PLATES AND SUPPORTING BRACKETS REQUIRED FOR THE INSTALLATION OF ALL CASEWORK AND OF ALL FLOOR MOUNTED OR SUSPENDED MECHANICAL, ELECTRICAL OR LABORATORY EQUIPMENT.
 - WHERE HVAC OR OTHER MECHANICAL, ELECTRICAL AND PLUMBING ITEMS PENETRATE PARTITIONS, STUDS SHALL BE BRACED AND FRAMED TO STRUCTURE AS REQUIRED TO PROVIDE ADEQUATE SUPPORT. ALL PENETRATIONS THROUGH ACOUSTICAL AND FIRE RATED WALLS SHALL BE SEALED TO PROVIDE FIRE, SMOKE, AND/OR ACOUSTICAL ISOLATION OF SPACES WITH APPROPRIATE ACOUSTICAL FIRESTOP MATERIAL.
 - THERE SHALL BE NO BACK-TO-BACK ELECTRICAL, TELEPHONE, OR OTHER OUTLETS, EXCEPT WHERE SPECIFICALLY SHOWN.
 - WALL BASE IS NOT SHOWN ON ALL WALL TYPES FOR CLARITY. REFER TO FINISH SCHEDULE.
 - PROVIDE MOISTURE AND MOLD RESISTANT GYPSUM BOARD AT ALL WET LOCATIONS.
 - EXCEPT AT FIRE-RATED PARTITIONS, ALL WALL AND COLUMN GYPSUM BOARD FACING SHALL BE HELD AT 5/8" INCH BELOW STRUCTURE, UNLESS NOTED OR SHOWN OTHERWISE.
 - PROVIDE MOISTURE AND MOLD RESISTANT GYPSUM BOARD AT THE INTERIOR SIDE OF ALL EXTERIOR WALLS.
 - STC AND STC TEST NUMBERS ASSUME 20 GA STUDS AT 16" O.C. AT COLD FORMED METAL FRAMING. WOOD FRAMING IS ALSO ASSUMED TO BE AT 16" O.C. CMU TEST REPORTS ASSUME HOLLOW UNITS (NO GROUT OR SAND).



M = MASONRY PARTITION TYPE						
MARK	TOTAL THICKNESS	FIRE RATING (HR) OR EXTENTS	MODIFIER	RECD. STC	STC TEST #	UL #
MB	7 5/8"	NON RATED				
MB.1	7 5/8"	2 HOUR				



P = PARTITION TYPE									
MARK	TOTAL THICKNESS	STUD SIZE	FIRE RATING (HR) OR EXTENTS	MODIFIER	GYP BOARD	BATT INSUL. THICKNESS	RECD. STC	STC TEST #	UL #
P3	4 7/8"	3 5/8"	-	-	1 LAYER OF 5/8", BOTH SIDES	3 1/2"	40	NGC-2018074	
P6	7 1/4"	6"	-	-	1 LAYER OF 5/8", BOTH SIDES	6"	44	NGC-2018133	
P3a	4 7/8"	3 5/8"	-	-	1 LAYER OF 5/8", BOTH SIDES	3 1/2"			

ADDITIONAL SPECIFICATIONS FOR THIS PROJECT ARE FOUND IN THE LEE'S SUMMIT JOINT OPERATIONS FACILITY, PACKAGE 2: CONSTRUCTION SET

LEE'S SUMMIT POLICE RENOVATION
 10 NE TUDOR RD
 LEE'S SUMMIT, MO 64086

REVISION DATES:



PROFESSIONAL SEAL
G-401
 ISSUE DATE: NOV. 7, 2024
 HOEFER WELKER #: 138191

LEE'S SUMMIT POLICE RENOVATION
 LEE'S SUMMIT, MO 138191

Hardware Sets

Set: 1.0
 Doors: L03C, L03D, L05B, L06B, L312A, L312B, L312C, L312D
 Description: OH DOOR
 1 Hardware By Others Hardware By Door Supplier

Set: 2.0
 Doors: L03B, L05C, L06A
 Description: EXTERIOR HMD CARD READER LOCK CPS CLOSER

2 Hinge, Full Mortise, Hvy Wt	T4A3386 NRP 4-1/2" x 4-1/2"	US32D	MK	087100
1 Hinge, Full Mortise, Hvy Wt	T4A3386 QC12 4-1/2" x 4-1/2"	US32D	MK	087100
1 Fail Secure Lock	LC RX 8271-24V LNMB	US32D	SA	087100
1 Cylinder Rim/Mortise	type as req'd for hardware item, match existing key system			
1 Door Closer	CPS7500	689	NO	087100
1 Gasketing	2891AS		PE	087100
1 Rain Guard	346C		PE	087100
1 Sweep	3452AV		PE	087100
1 Threshold	2005AT		PE	087100
1 ElectroLynx Harness	QC-C1500P/QC-C1500		MK	087100
1 ElectroLynx Harness	QC-Cxx/CxxP (size to door width/hardware)		MK	087100
1 Position Switch	DPS		SU	087100
1 Card Reader	Wall Mounted Reader by access control provider		HID	
1 Power Supply	AQD or Centralized Power Source (coordinate w/GC)		SU	087100

Notes: ACCESS BY AUTHORIZED CARD CREDENTIAL OR MANUAL KEY. ALWAYS FREE EGRESS.

Set: 3.0
 Doors: L04A
 Description: EXTERIOR HMD CARD READER LOCK PR CLOSER

DOOR HARDWARE 087100 - 1

LEE'S SUMMIT POLICE RENOVATION
 LEE'S SUMMIT, MO 138191

3 Hinge, Full Mortise	TA2714 4-1/2" x 4-1/2"	US26D	MK	087100
1 Electric Power Transfer	EL-CEPT	630	SU	087100
1 Fail Secure Lock	LC RX 8271-24V LNMB	US26D	SA	087100
1 Cylinder Rim/Mortise	type as req'd for hardware item, match existing key system			
1 Door Closer	CPS7500	689	NO	087100
1 Blade Stop	6891	689	NO	087100
1 Drop Plate	7788	689	NO	087100
1 Set Weatherstrip	by Door Manufacturer			
1 ElectroLynx Harness	QC-C1500P/QC-C1500		MK	087100
1 ElectroLynx Harness	QC-Cxx/CxxP (size to door width/hardware)		MK	087100
1 Position Switch	DPS		SU	087100
1 Card Reader	Wall Mounted Reader by access control provider		HID	
1 Power Supply	AQD or Centralized Power Source (coordinate w/GC)		SU	087100

Notes: ACCESS BY AUTHORIZED CARD CREDENTIAL OR MANUAL KEY. ALWAYS FREE EGRESS.

Set: 7.0
 Doors: L359, L361
 Description: OFFICE LOCK NO CLOSER GASKET

3 Hinge, Full Mortise	TA2714 4-1/2" x 4-1/2"	US26D	MK	087100
1 Office/Entry Lock	LC 8205 LNMB	US26D	SA	087100
1 Cylinder Rim/Mortise	type as req'd for hardware item, match existing key system			
1 Wall Stop	409	US32D	RO	087100
3 Silencer	608		RO	087100

Notes: RM850 FLOOR STOP @ L359.

Set: 8.0
 Doors: L251
 Description: STOREROOM LOCK PR CLOSER

3 Hinge, Full Mortise, Hvy Wt	T4A3786 NRP 4-1/2" x 4-1/2"	US26D	MK	087100
1 Storeroom/Closet Lock	LC 8204 LNMB	US26D	SA	087100

DOOR HARDWARE 087100 - 4

LEE'S SUMMIT POLICE RENOVATION
 LEE'S SUMMIT, MO 138191

2 Hinge, Full Mortise, Hvy Wt	T4A3386 NRP 4-1/2" x 4-1/2"	US32D	MK	087100
1 Hinge, Full Mortise, Hvy Wt	T4A3386 QC12 4-1/2" x 4-1/2"	US32D	MK	087100
1 Fail Secure Lock	LC RX 8271-24V LNMB	US32D	SA	087100

1 Cylinder Rim/Mortise	type as req'd for hardware item, match existing key system			
1 Door Closer	PR7500	689	NO	087100
1 Wall Stop	409	US32D	RO	087100
1 Gasketing	2891AS		PE	087100
1 Rain Guard	346C		PE	087100
1 Sweep	3452AV		PE	087100
1 Threshold	2005AT		PE	087100
1 ElectroLynx Harness	QC-C1500P/QC-C1500		MK	087100
1 ElectroLynx Harness	QC-Cxx/CxxP (size to door width/hardware)		MK	087100
1 Position Switch	DPS		SU	087100
1 Card Reader	Wall Mounted Reader by access control provider		HID	
1 Power Supply	AQD or Centralized Power Source (coordinate w/GC)		SU	087100

Notes: ACCESS BY AUTHORIZED CARD CREDENTIAL OR MANUAL KEY. ALWAYS FREE EGRESS.

Set: 4.0
 Doors: L03A, L05A
 Description: CARD READER LOCK CPS CLOSER GASKET SWEEP TH

2 Hinge (heavy weight)	T4A3786 4-1/2" x 4-1/2"	US26D	MK	087100
1 Hinge (heavy weight)	T4A3786 QC12 4-1/2" x 4-1/2"	US26D	MK	087100
1 Fail Secure Lock	LC RX 8271-24V LNMB	US32D	SA	087100
1 Cylinder Rim/Mortise	type as req'd for hardware item, match existing key system			
1 Door Closer	CPS7500	689	NO	087100
1 Gasketing	S773D (Head & Jambs)		PE	087100
1 Sweep	315CN		PE	087100
1 Threshold	171A		PE	087100
1 ElectroLynx Harness	QC-C1500P/QC-C1500		MK	087100
1 ElectroLynx Harness	QC-Cxx/CxxP (size to door width/hardware)		MK	087100

DOOR HARDWARE 087100 - 2

LEE'S SUMMIT POLICE RENOVATION
 LEE'S SUMMIT, MO 138191

1 Cylinder Rim/Mortise	type as req'd for hardware item, match existing key system			
1 Door Closer	PR7500	689	NO	087100
1 Kick Plate	K1050 10" x 2" LDW 4BE CSK	US32D	RO	087100
1 Wall Stop	409	US32D	RO	087100
3 Silencer	608		RO	087100

Set: 9.0
 Doors: L272, L280
 Description: INTERVIEW GASKET SEALS

1 Gasketing, interview rooms	350CSR		PE	087100
1 Threshold	2005AT		PE	087100

Notes: EXISTING DOOR/FRAME ADD NEW GASKET AND THRESHOLD.

END OF SECTION 087100

DOOR HARDWARE 087100 - 5

LEE'S SUMMIT POLICE RENOVATION
 LEE'S SUMMIT, MO 138191

1 Position Switch	DPS		SU	087100
1 Card Reader	Wall Mounted Reader by access control provider		HID	
1 Power Supply	AQD or Centralized Power Source (coordinate w/GC)		SU	087100

Notes: ACCESS BY AUTHORIZED CARD CREDENTIAL OR MANUAL KEY. ALWAYS FREE EGRESS.

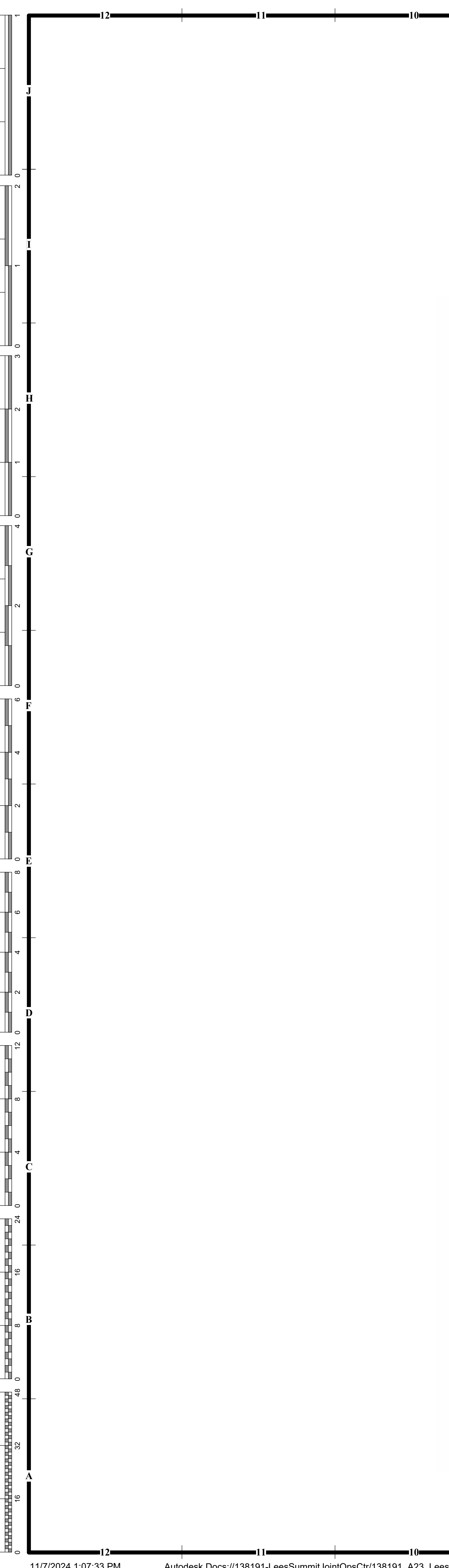
Set: 5.0
 Doors: L04B
 Description: CARD READER LOCK PR CLOSER GASKET SWEEP TH

2 Hinge (heavy weight)	T4A3786 4-1/2" x 4-1/2"	US26D	MK	087100
1 Hinge (heavy weight)	T4A3786 QC12 4-1/2" x 4-1/2"	US26D	MK	087100
1 Fail Secure Lock	LC RX 8271-24V LNMB	US32D	SA	087100
1 Cylinder Rim/Mortise	type as req'd for hardware item, match existing key system			
1 Door Closer	PR7500	689	NO	087100
1 Wall Stop	409	US32D	RO	087100
1 Gasketing	S773D (Head & Jambs)		PE	087100
1 Sweep	315CN		PE	087100
1 Threshold	171A		PE	087100
1 ElectroLynx Harness	QC-C1500P/QC-C1500		MK	087100
1 ElectroLynx Harness	QC-Cxx/CxxP (size to door width/hardware)		MK	087100
1 Position Switch	DPS		SU	087100
1 Card Reader	Wall Mounted Reader by access control provider		HID	
1 Power Supply	AQD or Centralized Power Source (coordinate w/GC)		SU	087100

Notes: ACCESS BY AUTHORIZED CARD CREDENTIAL OR MANUAL KEY. ALWAYS FREE EGRESS.

Set: 6.0
 Doors: L191
 Description: ALD CARD READER LOCK CPS CLOSER

DOOR HARDWARE 087100 - 3

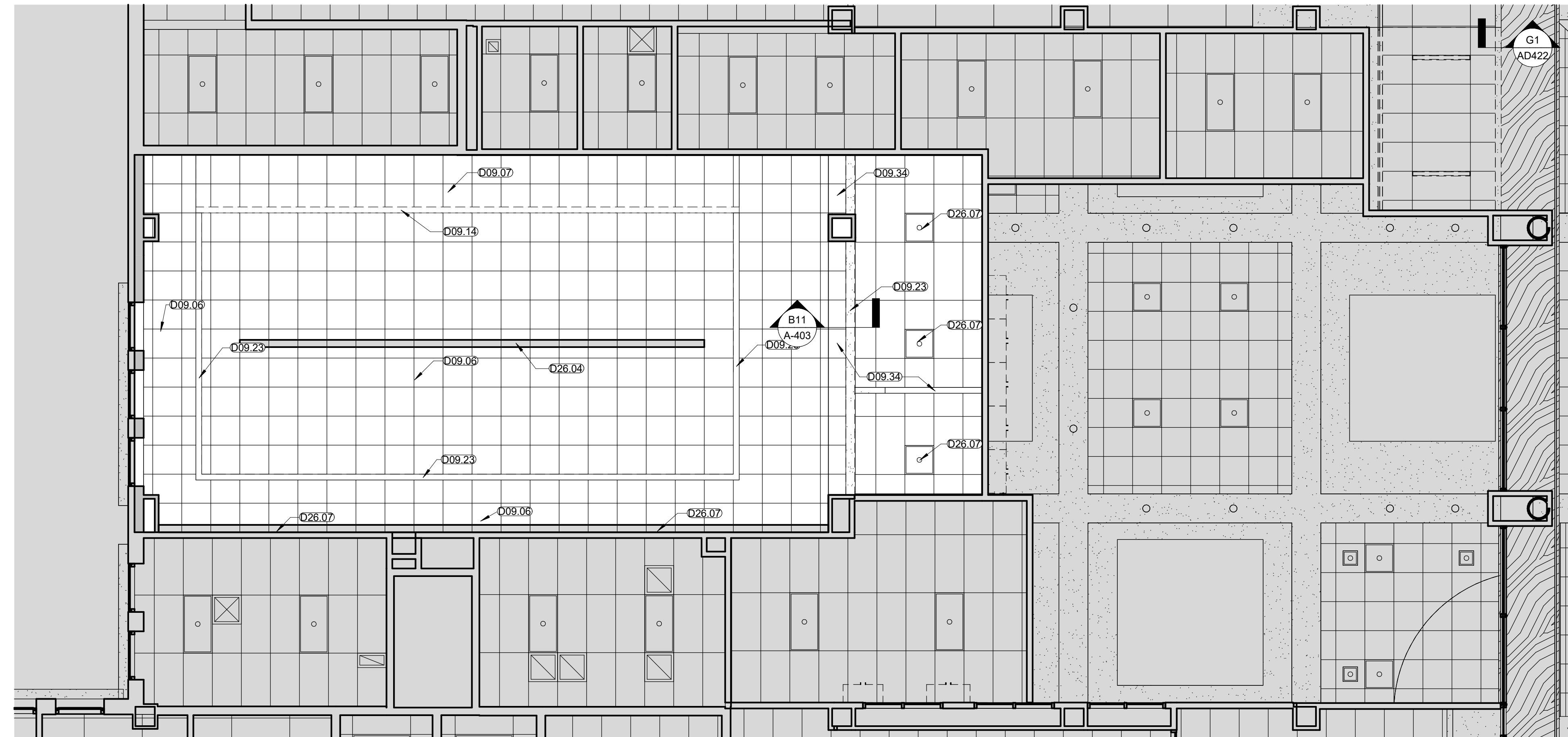


GENERAL NOTES - DEMOLITION PLANS:

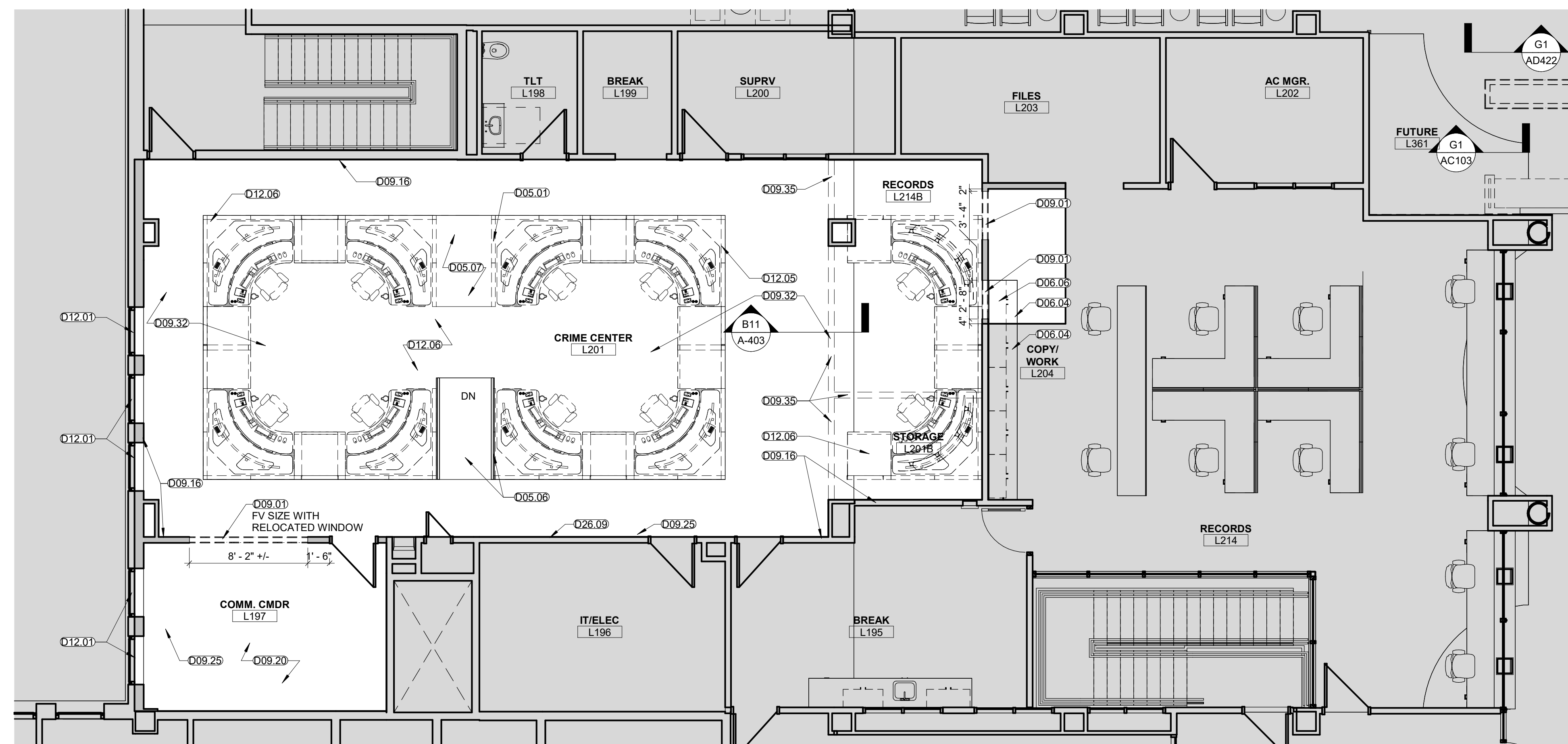
1. RE-SHEET G-011 FOR ADDITIONAL GENERAL NOTES THAT ARE APPLICABLE.
2. CONTRACTOR TO VISIT PROJECT SITE AND BUILDING, PRIOR TO BID.
3. BUILDING AND SITE TO REMAIN SECURE DURING DEMOLITION AND CONSTRUCTION.
4. PROTECT ALL ITEMS TO REMAIN (WALLS, PLUMBING FIXTURES, PIPING, HVAC UNITS, COLUMNS, ETC).
5. CONTRACTOR TO PROTECT EXISTING FINISHES ADJACENT TO DEMOLITION WORK. CONTRACTOR TO PATCH AND REPAIR ALL WORK, ESPECIALLY WORK ADJACENT TO EXISTING AREAS, AS REQUIRED.
6. CONTRACTOR TO REPAIR ANY AREAS DAMAGED DURING DEMOLITION.
7. CONTRACTOR TO REPAIR ANY PUNCTURES OR TEARS TO THE VAPOR BARRIER AT THE EXTERIOR WALLS.
8. CONTRACTOR TO COORDINATE DEMOLITION OPENINGS WITH NEW PLANS AND ELEVATIONS.
9. REMOVE EXISTING GYP BOARD OR PLASTER AS NECESSARY, TO PROVIDE NEW BLOCKING IN EXISTING WALLS FOR NEW CASEWORK AND EQUIPMENT.
10. REMOVE ALL CEILING ELEMENTS IN CONSTRUCTION AREA INDICATED.
11. LIGHT FIXTURES/CONTROLS ARE SHOWN FOR GENERAL SCOPE ONLY AND DO NOT RELIEVE THE CONTRACTOR OF ANY OBLIGATION TO REMOVE ALL ELEMENTS IN THE CEILING GRID. REFERENCE MEP DRAWINGS FOR EXTENTS ABOVE CEILING GRID. ALL CEILING FIXTURES, DIFFUSERS, SPEAKERS, SMOKE ALARMS, EXIT SIGNS, STROBES, CEILING TILES, CEILING GRID, BULKHEADS, AND SOFFIT ELEMENTS TO BE REMOVED.
12. SPRINKLER HEADS TO REMAIN. PROTECT DURING DEMOLITION.
13. CONTRACTOR TO REMOVE FENCING AND GATE UPON COMPLETION OF BUILDING AND SIDEWALKS/PAVING.

DEMOLITION KEYNOTES

Keynote	Description
D05.01	REMOVE EXISTING HANDRAILS.
D05.06	PROTECT EXISTING RAMP AND HANDRAILS TO REMAIN.
D05.07	MODIFY EXISTING RAMP TO BE FLUSH WITH RAISED FLOOR.
D06.04	PROTECT EXISTING CASEWORK TO REMAIN.
D06.06	REMOVE UPPER CABINET ONLY. PATCH WALL AS REQUIRED.
D09.01	PROVIDE OPENING IN EXISTING WALL AS SHOWN, PROVIDE WOOD BLOCKING FOR NEW/RELOCATED DOOR/WINDOW.
D09.06	REMOVE ACOUSTICAL CEILING TILES, CEILING GRID AND HANGER WIRES TO REMAIN.
D09.07	REMOVE ALL ACOUSTICAL CEILING TILES, GRID, AND HANGER WIRES.
D09.14	REMOVE DRYWALL BULKHEAD AND/OR SOFFIT.
D09.16	PROTECT EXISTING PARTITION TO REMAIN.
D09.20	PROTECT EXISTING WALLS AND WALL FINISHES.
D09.23	PROTECT EXISTING SOFFIT.
D09.25	REPAIR DRYWALL, AND TOUCHUP PAINT ANY DAMAGE DURING CONSTRUCTION.
D09.32	EXISTING FLOORING TO REMAIN, PROTECT DURING CONSTRUCTION.
D09.34	REMOVE PORTION OF EXISTING CEILING TO PREPARE FOR NEW WALL.
D09.35	REMOVE CARPET AS REQUIRED FOR NEW WALLS.
D12.01	REMOVE AND DISPOSE OF EXISTING BLINDS, REPAIR WALL AS NEEDED FOR NEW ROLLER SHADES.
D12.05	FURNITURE TO BE REMOVED BY OWNER.
D12.06	ACCESS FLOOR SYSTEM TO REMAIN, PROTECT DURING CONSTRUCTION.
D26.04	REMOVE AND DISPOSE OF LIGHT FIXTURES (RE ELECTRICAL.)
D26.07	EXISTING LIGHT FIXTURE TO REMAIN, PROTECT DURING CONSTRUCTION.
D26.09	EXISTING ELECTRICAL AND LOW VOLTAGE PANELS TO REMAIN, PROTECT DURING CONSTRUCTION.



E1 ENLARGED RTCC - DEMO RCP
 3/16" = 1'-0"



A1 RTCC DEMO PLAN
 3/16" = 1'-0"

LEE'S SUMMIT POLICE RENOVATION

PACKAGE 3 - RTCC

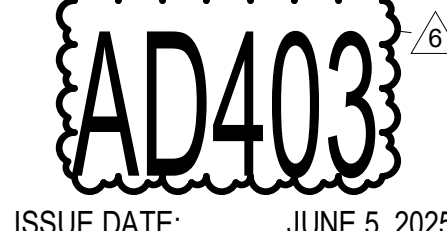
10 NE TUDOR RD
 LEE'S SUMMIT, MO 64086

REVISION DATES:

2	ADD #002	11/26/2024
6	ASI #004	6/26/2025



PROFESSIONAL SEAL



ISSUE DATE: JUNE 5, 2025
 HOEFER WELKER #: 138191

ENLARGED DEMO PLAN - RTCC

9'-1"
 1'-10" = 1'-0"
 1'-12" = 1'-0"
 1" = 1'-0"
 3/8" = 1'-0"
 1" = 1'-0"
 3/8" = 1'-0"
 1" = 1'-0"
 3/8" = 1'-0"
 1" = 1'-0"
 3/8" = 1'-0"
 1" = 1'-0"
 3/8" = 1'-0"
 1" = 1'-0"
 3/8" = 1'-0"

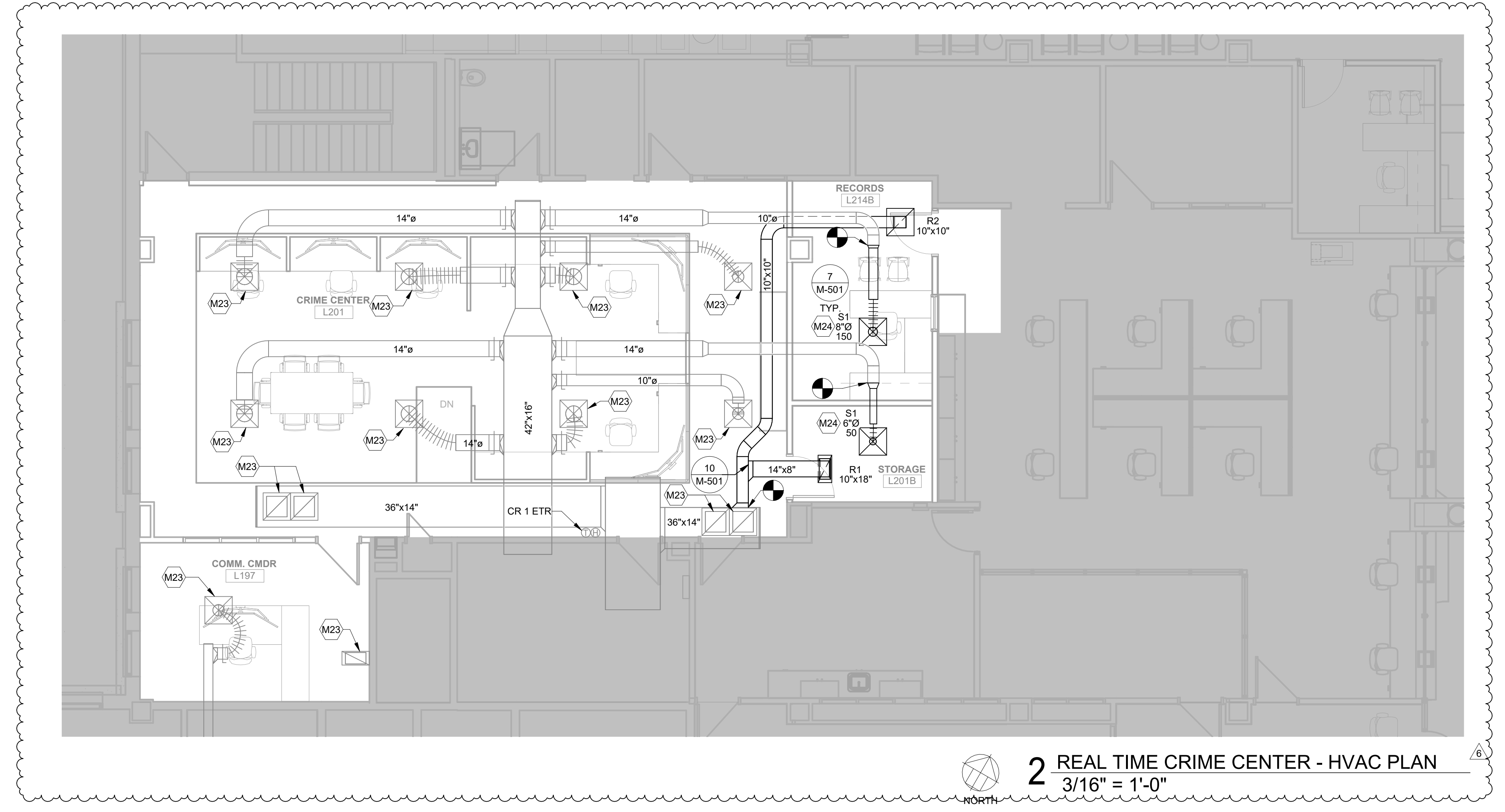
REVISION DATES:

2	ADDENDUM #2	11/26/2024
6	ASI #4	6/27/2025

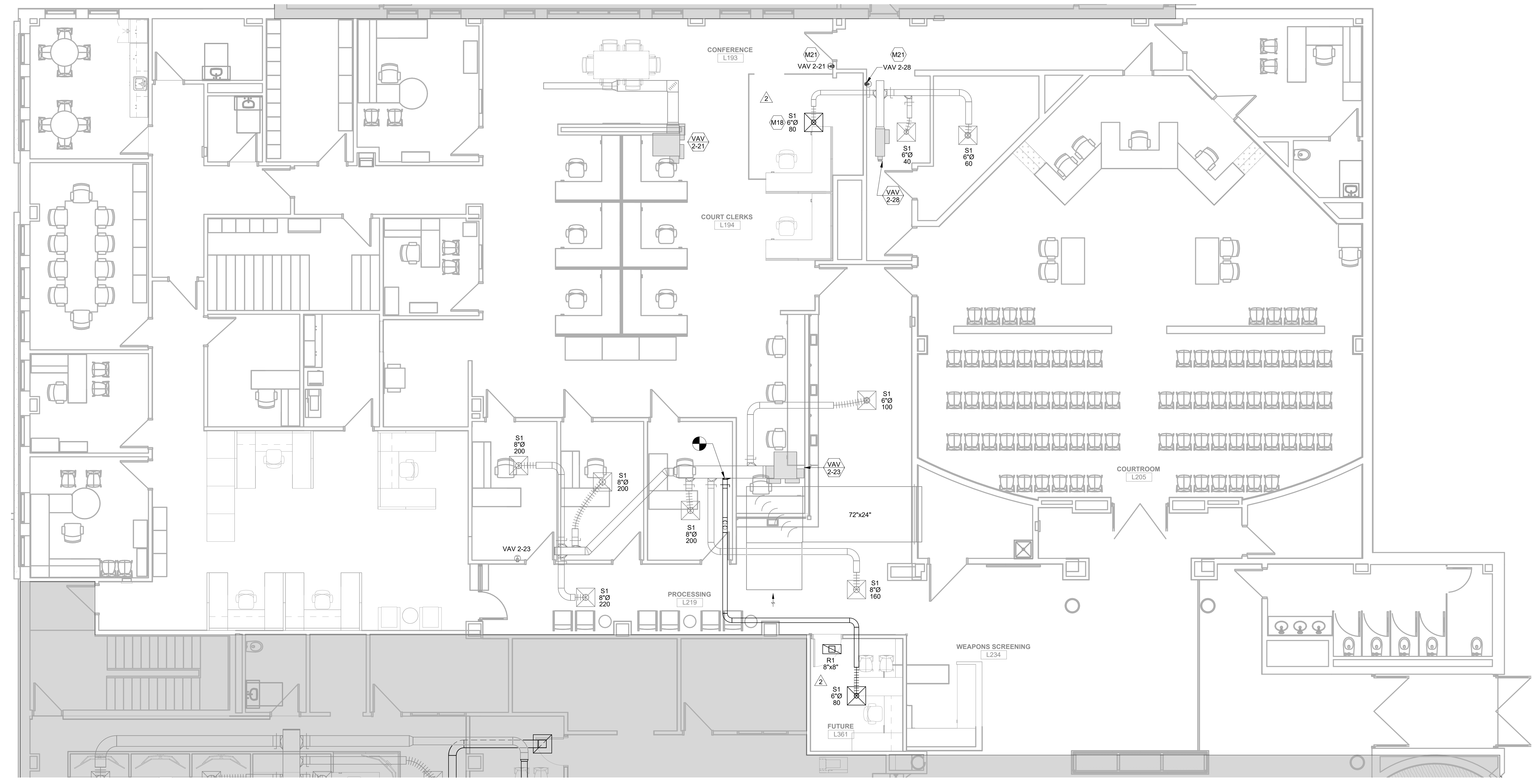


PROFESSIONAL SEAL
M-402
 ISSUE DATE: NOVEMBER 7, 2024
 HOEFER WELKER #: 138191

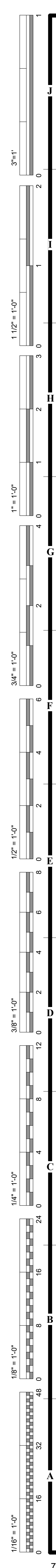
- GENERAL NOTES:**
- REFER TO SHEET MG001 FOR GENERAL MECHANICAL NOTES.
- MECHANICAL PLAN NOTES:**
- M18 REINSTALL DIFFUSER IN NEW CEILING.
 - M21 NEW LOCATION FOR EXISTING THERMOSTAT
 - M23 CLEANWIPE DOWN EXISTING DIFFUSER/REGISTER AFTER CONSTRUCTION HAS BEEN COMPLETED.
 - M24 INSTALL RELOCATED DIFFUSER.



2 REAL TIME CRIME CENTER - HVAC PLAN
 3/16" = 1'-0"



1 HVAC PLAN - COURT
 3/16" = 1'-0"





PANELBOARD NOTES:
THIS IS A MASTER LIST THAT APPLIES TO ALL PANELBOARDS. NOT ALL NOTES MAY BE USED.

AF ARC FAULT CIRCUIT INTERRUPTER (AFCI) BREAKER
CH ROUTE CIRCUIT THROUGH CONTACTOR #
EM EMERGENCY LIGHTING HANDLE ON CLAMP, EXISTING TO REMAIN.
EX EXISTING TO REMAIN.
FA FIRE ALARM CIRCUIT, RED HANDLE, HANDLE ON CLAMP
GF GROUND FAULT CIRCUIT INTERRUPTER (GFCI) BREAKER
HT# PROVIDE HANDLE TIES TO COMPLY WITH NEC 210.4(B), # INDICATES GROUPING (I.E. GROUP 1 TOGETHER, ETC.)
LK HANDLE PADLOCKABLE OFF DEVICE.
LO HANDLE ON CLAMP.
NB PROVIDE NEW BREAKER IN EXISTING PANELBOARD, AIC RATING OF NEW BREAKER SHALL MATCH THE PANELBOARD AIC RATING.
TB# TANKM 20A BREAKER, # INDICATES GROUPING
OL REFER TO ONE-LINE DIAGRAM FOR FEEDER INFORMATION
RB REUSE EXISTING BREAKER TO SERVE NEW LOAD.
SD SPARE BREAKER AFTER DEMOLITION.

PANELBOARD: LP1
BUS AMPS: 600 A
MAIN SIZE/TYPE: MLO
VOLTS/PHASE: 480Y/277 V, 3PH, 4W
SUPPLIED BY: MSB1

AIC RATING: 14,000 AIC
FAULT CURRENT: ETR
CUM. VOLT. DROP: ETR
MOUNTING: SURFACE
LOCATION: ELECTRICAL SWITCHGEAR...

CKT NO.	DESCRIPTION	NOTES	WIRE SIZE	GND SIZE	BKR AMP	P	A	B	C	P	BKR AMP	GND SIZE	WIRE SIZE	NOTES	DESCRIPTION	CKT NO.	
1	VAV 1-4	EX	20	7			3000	5000			1	20		EX	VAV 2-10	2	
3	VAV 1-5	EX	20	7				1000	3288		1	20		EX	VAV 2-9	4	
5	VAV 1-6	EX	20	7					4000	3288	3	20		EX	VAV 2-8	6	
7	VAV 1-7	EX	20	7			1500	3288			1	20		EX	VAV 2-7	8	
9	VAV 1-8	EX	20	7				3000	2500		1	20		EX	VAV 2-6	10	
11	VAV 1-13	EX	20	7					4000	3621	3	20		EX	VAV 2-17	12	
13	VAV 1-14	EX	20	7			2000	3621			3	20		EX	VAV 2-16	14	
15	VAV 1-15	EX	20	7				6392	3621		1	20		EX	VAV 2-15	16	
17	VAV 1-15	EX	20	3					6392	3500	1	20		EX	VAV 2-14	18	
19							6392	3121			3	20		EX	VAV 2-14	20	
21								6392	3121		1	20		EX	VAV 2-13	22	
23	VAV 1-12	EX	20	3					6392	3121	1	20		EX	VAV 2-12	24	
25							6392	2500			1	20		EX	VAV 2-11	26	
27								8885	3000		1	20		EX	VAV 2-10	28	
29	VAV 1-21	EX	40	3					8885	3621	3	20		EX	VAV 2-9	30	
31							8885	3621			3	20		EX	VAV 2-8	32	
33								3621	3621		3	20		EX	VAV 2-7	34	
35	VAV 1-23	EX	20	3					3000	3621	1	20		EX	VAV 2-6	36	
37							3621	3621			3	20		EX	VAV 2-5	38	
39	VAV 1-24	EX	20	7					3000	2000	1	20		EX	VAV 2-4	40	
41	VAV 1-25	EX	20	7					3000	2000	1	20		EX	VAV 2-3	42	
43	VAV 2-12	EX	20	7			4000	2000			1	20		EX	VAV 2-2	44	
45	VAV 2-11	EX	20	7				3000	4000		1	20		EX	VAV 2-1	46	
47									5000	2400	1	20		EX	LTG-OFFICES	48	
49	VAV 1-32	EX	30	3			5000	2430			1	20		EX	LTG-CORRIDOR	50	
51								5000	2137		1	20		EX	LTG-CERICAL/BREAK RM	52	
53	VAV 1-27	EX	20	7				7333	2560		1	20		EX	LTG-SIU WORKROOM	54	
55									4000	2560	1	20		EX	EF-9 & EF-8	56	
57	VAV 1-28	EX	40	3				7333	2925		2	20		EX	LTG-EXTERIOR WEST PARKING LOT	58	
59											3	60	10	4	NB	PWR - VEH BAY RADIANT HTRS	60
61	VAV 1-29	EX	20	7			2500	10667			3	60	10	4	NB	UH-2 (VEHICLE BAY)	62
63	VAV 1-31	EX	20	7				3000	10667		3	60	10	4	NB	RTU-1	64
65	LTG-CORRIDOR	EX	20	7					2850	10667	1	20		EX	ALTERNATE CKT FOR JAIL LTG	66	
67	LTG-STORAGE AREAS/MECH RM	EX	20	7			2475	3000			1	20		EX	ALTERNATE CKT FOR JAIL LTG	68	
69	LTG-EVIDENCE OFFICES	EX	20	7				2160	5182		3	25	10	10	NB	SPARE	70
71	LTG-GARAGE	EX	20	7					2709	5182	3	25	10	10	NB	SPARE	72
73	CUH-2	EX	30	7			5000	5182			1	20		EX	SPARE	74	
75	CUH-3	EX	30	7				5000	2700		1	20		EX	SPARE	76	
77	CUH-4	EX	30	7					5000	3158	1	20		EX	SPARE	78	
79	SPARE	EX	--	--			0	0			--	--	--	EX	SPARE	80	
81	SPARE	EX	--	--			0	0			1	20	--	EX	SPARE	82	
83	SPARE	EX	--	--			0	0			1	20	--	EX	SPARE	84	
							TOTAL LOAD:	108708 VA	108165 VA	112845 VA							
							TOTAL AMPS:	393 A	390 A	408 A							
							LOAD BALANCE:	-0.97%	-1.54%	2.80%							

LOAD CLASSIFICATION	CONN. LOAD	DEMAND FACTOR	ESTIMATED DEMAND	PANELBOARD GENERAL NOTES:	PANELBOARD TOTALS
HEATING	286185 VA	100.00%	286185 VA	A. WIRE AND GROUND SIZE SHALL BE #12 UNLESS OTHERWISE NOTED.	TOTAL CONN. LOAD: 329719 VA
LIGHTING	33989 VA	125.00%	42486 VA		TOTAL EST. DEMAND LOAD: 338216 VA
MOTORS	4233 VA	100.00%	4233 VA		TOTAL CONN. CURRENT: 397 A
MISC EQUIP	5312 VA	100.00%	5312 VA		TOTAL EST. DEMAND CURRENT: 407 A

PANELBOARD: P1
BUS AMPS: 225 A
MAIN SIZE/TYPE: MLO
VOLTS/PHASE: 208Y/120 V, 3PH, 4W
SUPPLIED BY: NLD1

AIC RATING: 10,000 AIC
FAULT CURRENT: ETR
CUM. VOLT. DROP: ETR
MOUNTING: SURFACE
LOCATION: ELECTRICAL SWITCHGEAR...

CKT NO.	DESCRIPTION	NOTES	WIRE SIZE	GND SIZE	BKR AMP	P	A	B	C	P	BKR AMP	GND SIZE	WIRE SIZE	NOTES	DESCRIPTION	CKT NO.		
1	RCPT-STORAGE & EXTERIOR	EX	20	7			1260	900			1	20		EX	RCPT-OFFICES	2		
3	RCPT-VEHICLE PROCESSING	EX	20	7				900	1080		1	20		EX	RCPT-OFFICES	4		
5	RCPT-VEHICLE PROCESSING	EX	20	7					720	1200	1	20		EX	FURN J BOX - INVEST SGT	6		
7	RCPT-EXTERIOR	EX	20	7			1080	1200			1	20		EX	FURN J BOX - INVEST SGT	8		
9	GARAGE DOOR	EX	20	7				1176	1080		1	20		EX	RCPT-SIU CAPTAIN/CLERICAL	10		
11	GARAGE DOOR	EX	20	7					1176	540	1	20		EX	FURN J BOX - SIU CLERICAL	12		
13	GARAGE DOOR	EX	20	7			1176	540			1	20		EX	FURN J BOX - SIU CLERICAL	14		
15	GARAGE DOOR	EX	20	7					1176	1260	1	20		EX	RCPT-INTERV	16		
17	RCPT-EVIDENCE OFFICE/VEST	EX	20	7					900	1200	1	20		EX	FURN J BOX - WORK ROOM	18		
19	RCPT-EVIDENCE WORKROOM	EX	20	7			720	1200			1	20		EX	FURN J BOX - WORK ROOM	20		
21	RCPT-FORENSICS/EVIDENCE PROC	EX	20	7				900	1200		1	20		EX	FURN J BOX - WORK ROOM	22		
23	RCPT-MECH ROOM COUNTER	EX	20	7					720	1200	1	20		EX	FURN J BOX - WORK ROOM	24		
25	RCPT-INTERV COPY ROOM	EX	20	7			1260	1200			1	20		EX	FURN J BOX - WORK ROOM	26		
27	RCPT-DROWING FOUNTAIN	EX	20	7				400	180		1	20		EX	RCPT-SIU DET. BREAK ROOM	28		
29	RCPT-DARE-CHAPLIN/PLT LT	EX	20	7					1260	864	1	20		EX	RCPT-SIU DET. BREAK RM REF	30		
31	ELEVATOR PIT EQUIPMENT	EX	20	7			400	1100			1	20		EX	RCPT-DRINKING FTN. CLSTS	32		
33	RCPT-INTERV	EX	20	7					1080	540	1	20		EX	FURN J BOX - CIU CLERICAL	34		
35	RCPT-INTERV	EX	20	7					1080	1080	1	20		EX	FURN J BOX - CIU CLERICAL	36		
37	SPARE	EX	--	--			0	1080			1	20		EX	RCPT-CONFERENCE RM	38		
39	GARBAGE DISPOSER	EX	--	--				864	180		0	180		EX	RCPT-DISPATCH CONSOLE	40		
41	SPARE	EX	--	--							1	20		EX	RCPT-DISPATCH CONSOLE	42		
43	GARBAGE DISPOSER	EX	--	--			864	180			1	20		EX	RCPT-DISPATCH CONSOLE	44		
45	GENERATOR BATTERY CHARGER	EX	20	7				1200	180		1	20		EX	RCPT-DISPATCH CONSOLE	46		
47	GENERATOR JACKET HEATER	EX	20	7					1000	360	1	20		EX	EXT LGTS - BOLLARDS @ PATIO	48		
49							1000	760			1	20		EX	EXT LGTS - BLDG SIGN, PLAZA	50		
51	SUMP PUMP (EXTERIOR)	EX	20	7					1820	720	1	20		EX	EXT LGTS - BOLLARDS SIDEWALK	52		
53	CONCRETE	EX	20	7						1200	630	1	20		EX	EXT LGTS - SIGN @ STREET	54	
55	EF-9 & EF-8	EX	15	7			970	360			1	20		EX	EXT LGTS - SIGN @ STREET	56		
57	UNDERCABINET LTG-FORENSICS	EX	20	7					500	200	1	20		EX	RCARBON MONOXIDE SENSOR	58		
59	EF-11 & RECIRC PUMPS	EX	20	7					500	1500	1	20		EX	UH-1 VEHICLE BAY	60		
61	RCPT-PARAPET WALL	EX	--	--			500	1080			1	20		EX	RCPT - VEHICLE BAY L05	62		
63	SPARE	EX	--	--					0	900	0	1664		2	20	NB	RCPT - MAINT L06	64
65	SPARE	EX	--	--							1	20		2	20	NB	RCPT - MAINT AIR COMP	66
67	RCPT-COMM RM L250	RB	20	1			1440	1664			1	20		EX	RCPT - CRIME SCENE BAY L03	70		
69	SPARE	EX	--	--					0	1440	1	20		EX	RCPT - CRIME SCENE BAY L04	72		
71	PWR-SITE VIDEO BOARD	RB	20	1			720	1080			1	20		EX	RCPT - CSB L03 POWER REEL N	74		
73	RCPT-VEH BAY PLUGMOLD	RB	20	1					0	500	1	20		EX	RCPT - CSB L03 POWER REEL S	76		
75	SPARE	EX	--	--							1	20		EX	PWR - VEH BAY DOOR OPENER	78		
77	SPARE	EX	--	--							1	20		EX	PWR - CRIME SCENE OPENER N	80		
79	SPARE	EX	--	--							1	20		EX	PWR - CRIME SCENE OPENER S	82		
81	RCPT-220V VEHICLE BAY	NB	10	10	30	2			1200	500	1	20		EX	PWR - MAINT DOOR OPENER	84		
83	RCPT-VEH BAY SHORE POWER	NB	10	10	30	2				1800	540	1	20		EX	RCPT-CRM SCN BAY	86	
							TOTAL LOAD:	25434 VA	21276 VA	24494 VA								
							TOTAL AMPS:	216 A	177 A	208 A								
							LOAD BALANCE:	9.33%	-10.29%	5.36%								

LOAD CLASSIFICATION	CONN. LOAD	DEMAND FACTOR	ESTIMATED DEMAND	PANELBOARD GENERAL NOTES:	PANELBOARD TOTALS
HEATING	1500 VA	100.00%	1500 VA	A. WIRE AND GROUND SIZE SHALL BE #12 UNLESS OTHERWISE NOTED.	TOTAL CONN. LOAD: 71204 VA
LIGHTING	3330 VA	125.00%	4163 VA		TOTAL EST. DEMAND LOAD: 54625 VA
MOTORS	6432 VA	100.00%	6432 VA		TOTAL CONN. CURRENT: 198 A
RECEPTACLES	45424 VA				