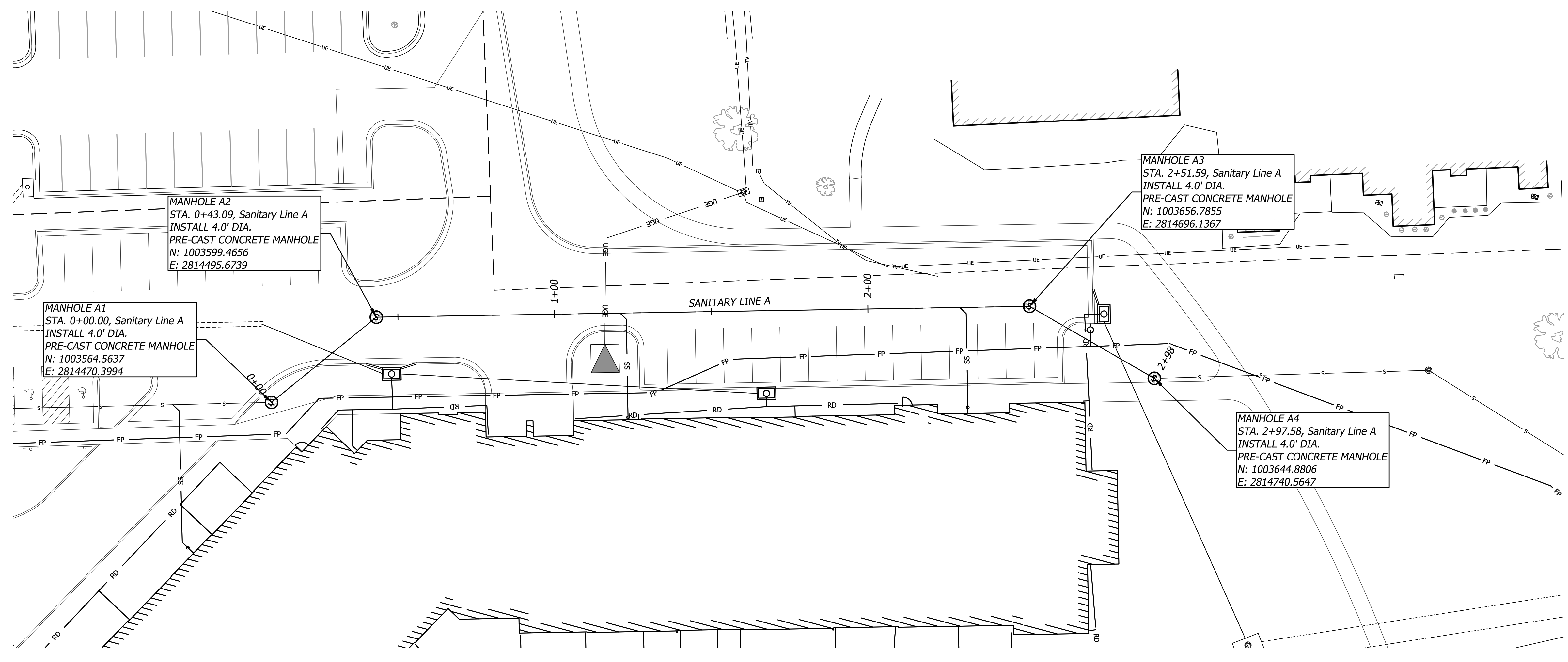
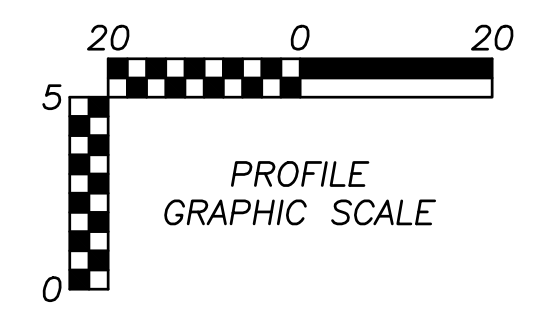
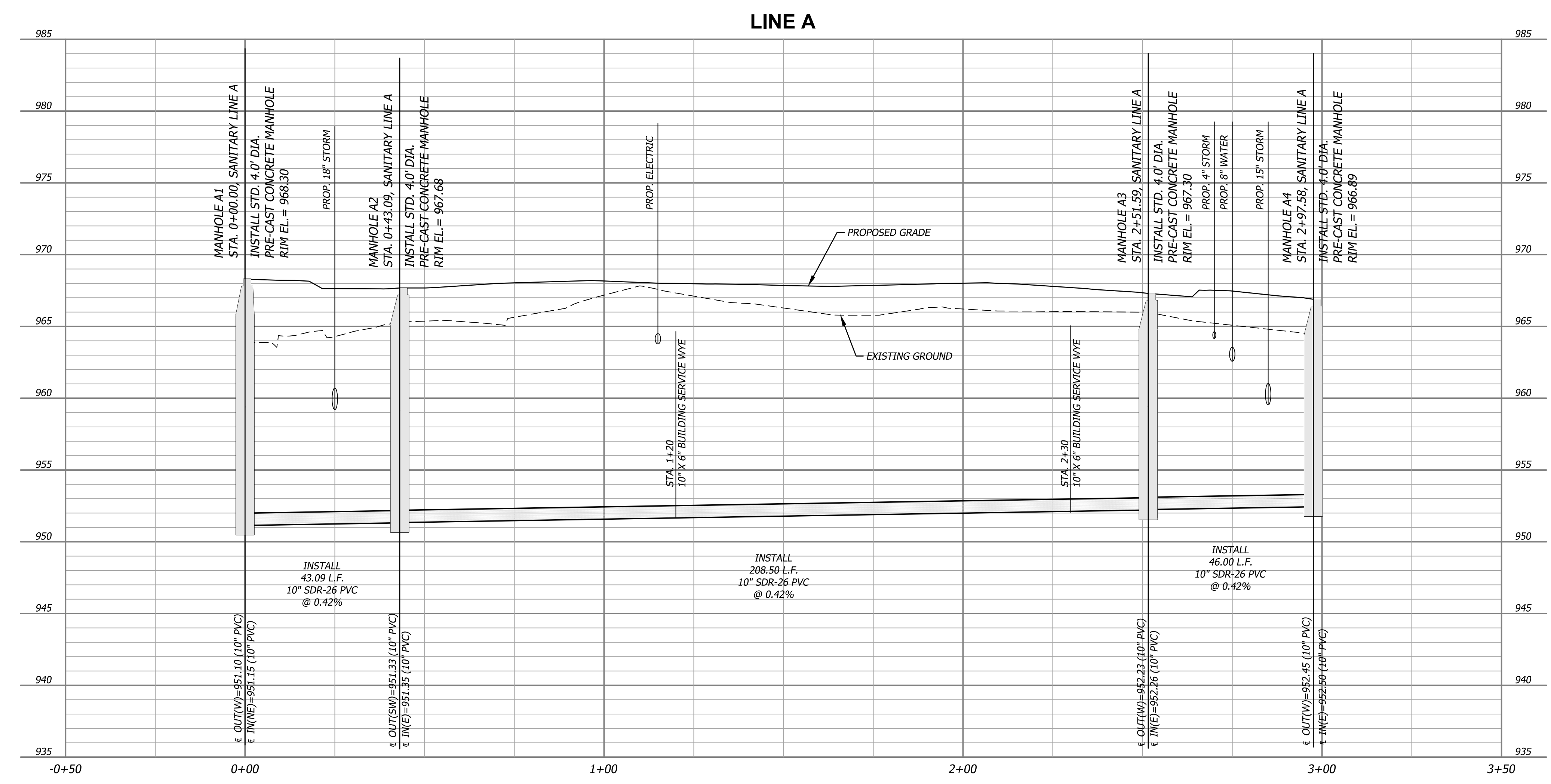
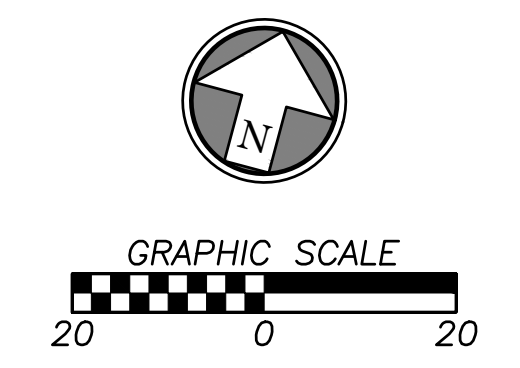


Mar 13, 2026 11:13:01am Plotted By: Eric Byrd V:\028800.10-KV Meadows North\04-DWG\Eng\Sheet\Sanitary Relocation\028800.10-SPTS-PRE-SAN.dwg Layout: Plan & Profile



SANITARY NOTE
 ALL NORTHINGS, EASTINGS, AND ALIGNMENT STATIONING FOR SANITARY STRUCTURES ARE TO CENTER OF STRUCTURE UNLESS STATED OTHERWISE.



Prepared For: JOHN KNOX VILLAGE 1001 NW CHIPMAN RD. LEE'S SUMMIT, MO 64081 816-251-8000	
SANITARY SEWER RELOCATION JOHN KNOX VILLAGE - MEADOWS NORTH LEE'S SUMMIT, MO	
PLAN & PROFILE	
Design: ERB Checked: ERB Issue Date: 03/13/2026 Project Number: 028800.10	Drawn: ERB Date: 03/13/2026
Description	Date
By	App.
3	

