

GENERAL PLAN NOTES

- ALL CONSTRUCTION SHALL CONFORM TO 2018 INTERNATIONAL RESIDENTIAL CODE OR ATTACHED ENGINEER SPECIFICATIONS WHERE APPLICABLE.
- ALL DIMENSIONS ARE FROM FACE OF STUD U.N.O.
- MINIMUM DOUBLE JOIST UNDER INTERIOR NON-LOAD BEARING WALLS. CANTILEVERS, OVER BEAMS, AND DOOR JAMBS SHALL BE BLOCKED.
- CEILING JOISTS SHALL BE 2X6 @ 16" O.C. U.N.O.
- WALL CONSTRUCTION SHALL BE CAPABLE OF ACCOMMODATING ALL LOADS IMPOSED ACCORDING TO IRC R301.
- EXTERIOR WALLS SHALL BE CONSTRUCTED IN ACCORDANCE WITH IRC 602 & FIGURES R602.3(1) AND R602.3(2).
- ANY WOOD MEMBERS IN CONTACT WITH CONCRETE OR MASONRY (OR THE FURRING THEY ARE ATTACHED TO) SHALL BE OF DECAY RESISTANT MATERIAL.
- INTERIOR NON-LOAD BEARING WALLS SHALL BE ISOLATED FROM THE FLOOR FRAMING ABOVE UNLESS THE INTERIOR NON-LOAD BEARING WALL RESTS DIRECTLY ON A FOOTING.
- SOLID BLOCKING BETWEEN JOISTS AT 48" O.C. AND EXTEND BLOCKING ONE JOIST BAY PAST EACH SIDE OF KITCHEN ISLAND AND DOUBLE JOIST UNDER KITCHEN ISLAND AND TUBS.
- ALL JOIST HANGERS TO BE SIMPSON LUS HANGERS UNO

XXXXXX INTERIOR LOAD BEARING WALL

FOUNDATION NOTES:

- ALL CONSTRUCTION SHALL CONFORM TO 2018 INTERNATIONAL RESIDENTIAL CODE (IRC).
- FOOTING ELEVATION TO BE DETERMINED BASED ON FINAL GRADE: ALL FOOTINGS MEET OR EXCEED MINIMUM FROST DEPTH OF 36".
- SOIL BEARING CAPACITY SHALL BE MINIMUM 1500 PSF.
- REFER TO SHEET S000 FOR MINIMUM SPECIFIED COMPRESSIVE STRENGTH OF CONCRETE.
- REQUIRED AIR ENTRAINMENT SHALL BE 5-7% AS SPECIFIED IN IRC TABLE R402.2.
- FOUNDATION WALLS SHALL BE DAMPPROOFED PER IRC R406.
- FOUNDATION DRAINAGE WILL BE IN ACCORDANCE WITH IRC R405.
- ALL INTERIOR FOOTINGS OF LOAD BEARING WALLS AND COLUMNS SHALL BE ISOLATED FROM THE BASEMENT FLOOR SLAB.
- STEEL COLUMNS SHALL BE A MINIMUM OF SCHEDULE 40.
- ALL ANCHOR BOLTS SHALL NOT BE SPACED MORE THAN 3' O.C. AND BE EMBEDDED INTO THE CONCRETE A MINIMUM OF 7".
- BASEMENT EGRESS SHALL COMPLY WITH IRC R310.
- FOR NEW CONSTRUCTION, AN ACCESSIBLE CONNECTION POINT TO BE PROVIDED TO A 20 FOOT CONCRETE ENCASED ELECTRODE (FOOTING REBAR) FOR THE ELECTRICAL SERVICE GROUNDING ELECTRODE CONDUCTOR (UFER GROUND).
- SLAB ON GROUND SHALL BE CONTINUOUSLY SUPPORTED ON UNDISTURBED SOIL OR WITH FILL AND BASE AS DESCRIBED:
 - FILL - THE FILL SHALL BE COMPACTED TO PROVIDE UNIFORM SUPPORT OF THE SLAB AND SHALL NOT CONTAIN DELETERIOUS QUANTITIES OF ORGANIC OR FOREIGN MATERIAL. FILL DEPTHS SHALL NOT EXCEED 24" FOR CLEAN SAND OR GRAVEL AND 8" FOR SUITABLE SOILS, UNLESS APPROVED BY THE BUILDING OFFICIAL.
 - BASE - A 4" THICK BASE COURSE CONSISTING OF CLEAN GRADED SAND, GRAVEL, CRUSHED STONE, CRUSHED SLAG, OR RECYCLED CONCRETE PASSING A 2" SIEVE SHALL BE PLACED ON THE PREPARED SUBGRADE WHEN THE SLAB IS BELOW GRADE.

RELEASE FOR CONSTRUCTION AS NOTED ON PLANS REVIEW DEVELOPMENT SERVICES LEE'S SUMMIT, MISSOURI 02/26/2026 8:13:24

WALL LEGEND - NEW CONSTRUCTION

- FOUNDATION WALL
- NEW INTERIOR PARTITION
- NEW EXTERIOR WALL

LOWER LEVEL DOOR SCHEDULE

LEVEL	COUNT	TYPE
LOWER LEVEL	1	2'6"X6'8"

LOWER LEVEL WINDOW SCHEDULE

LEVEL	COUNT	TYPE	FAMILY	HEAD HEIGHT
LOWER LEVEL	1	4'0"X4'0"SL	Window-Sliding-Double	7' - 0"

ISOLATED FOOTINGS AND COLUMN PADS

SYM	PIER PAD SIZE	DEPTH	MINIMUM REINFORCEMENT GRADE 40 KSI STEEL	SCHEDULE 40 STEEL COLUMN, MIN FY = 35 KSI
A	30"x30"	1'-0"	(5) #4 BAR E.W.	3" DIAMETER
B	36"x36"	1'-0"	(6) #4 BAR E.W.	3" DIAMETER
C	42"x42"	1'-2"	(7) #4 BAR E.W.	3" DIAMETER
D	48"x48"	1'-4"	(8) #4 BAR E.W.	3" DIAMETER
E	54"x54"	1'-4"	(9) #4 BAR E.W.	3.5" DIAMETER
F	60"x60"	1'-6"	(10) #4 BAR E.W.	3.5" DIAMETER

ISOLATED FOOTINGS AND COLUMN PADS

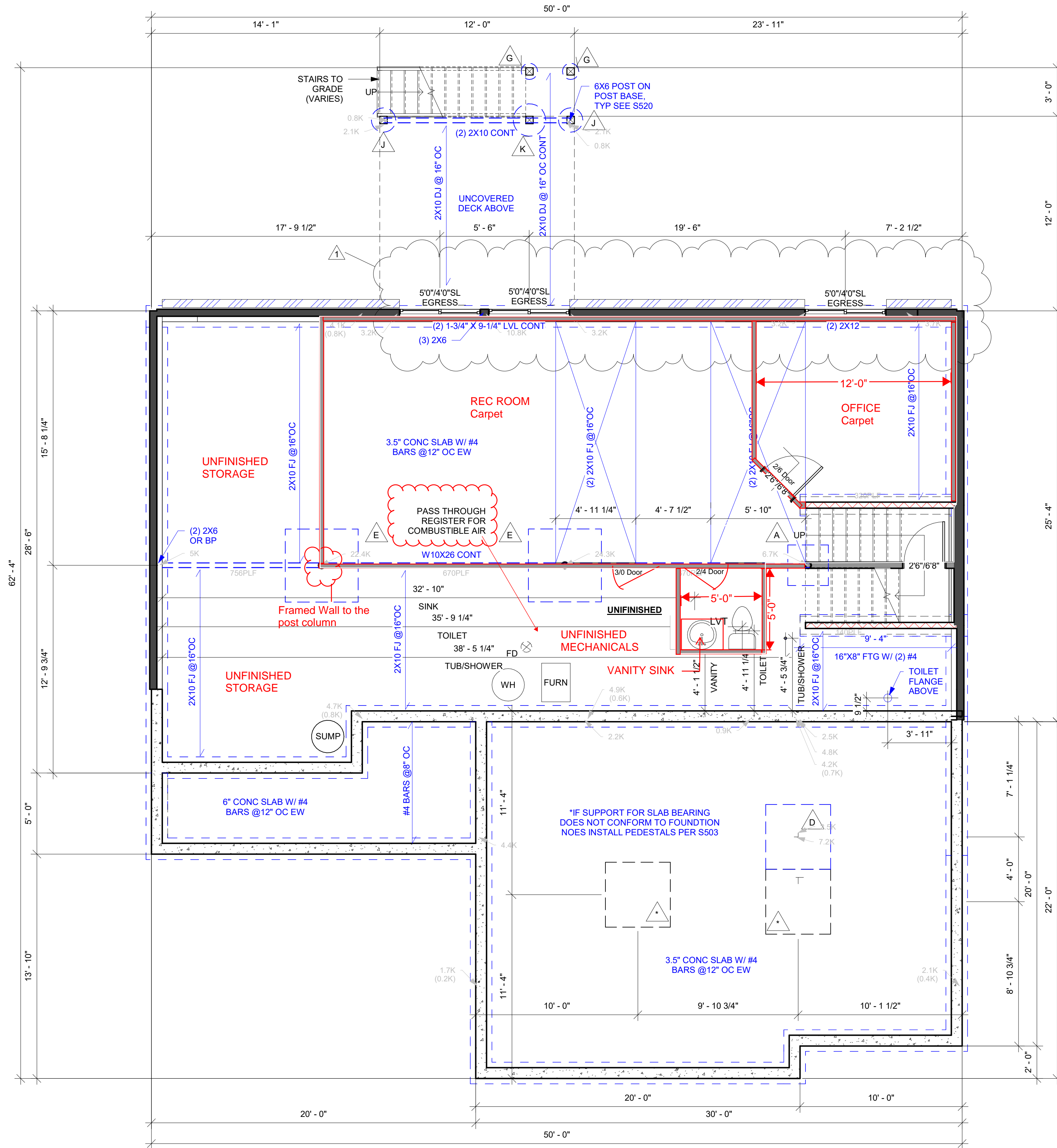
SYM	PIER DIAMETER	DEPTH	MINIMUM REINFORCEMENT GRADE 40 KSI STEEL
G	12"		
H	16"		
J	18"		
K	24"	3'-0"	(4) VERTICAL #4
L	28"		
M	30"		
N	32"		
O	34"		

*DENOTES STEEL COLUMN NOT REQUIRED. COLUMN AND PAD SIZES ARE FOR A MAXIMUM COLUMN HEIGHT OF 10'. COLUMNS GREATER THAN 10' REQUIRE A SEPARATE ENGINEERED DESIGN. FOOTINGS A-F SPACING OF 6" O.C. WITH 3" CLEAR COVER.

FOUNDATION WALL AND FOOTING TABLE (3000 PSI CONCRETE AND 40 KSI REBAR PLACED 2" FROM INSIDE TENSION FACE)

WALL TYPE	NOMINAL WALL THICKNESS	VERTICAL SPACING AND SIZE	HORIZONTAL SPACING AND SIZE	FOOTING SPECIFICATION U.N.O. ON PLANS
3'-6" TRENCH FOOTING	16"	#4 BARS @18" O.C.	(2) #4 BARS TOP & BOT. CONT.	
< 6'-0" WALL		#4 BARS @36" O.C.		16" x 8" CONC. FTG. W/ (2) #4 BARS CONT.
8'-0" WALL	8"	#4 BARS @16" O.C.	#4 BARS @24" O.C.	
9'-0" WALL		#4 BARS @12" O.C.		

PLAN VIEW - LOWER LEVEL DAYLIGHT COVERED
1/4" = 1'-0"



AVITAL HOMES (816)914-7128

THIS DESIGN AND DETAILS DISCLOSED ARE THE EXCLUSIVE PROPERTY OF AVITAL HOMES AND SHALL NOT BE COPIED OR REPRODUCED IN WHOLE OR IN PART WITHOUT ITS PRIOR WRITTEN CONSENT.



EVERSTEAD ENGINEERING & DESIGN



EVERSTEAD
3741 NE TROON DRIVE, SUITE 200
LEE'S SUMMIT, MO 64064
EVERSTEAD.COM (816)399-4901

AVITAL HOMES
LEXINGTON

1937 SW Hightown Dr
LEE'S SUMMIT, MISSOURI 64082

REVISIONS
1 - 11/08/2024

LOWER LEVEL / FOUNDATION PLAN

G101

DATE 11/8/2024 1:35:52 PM
SCALE As indicated