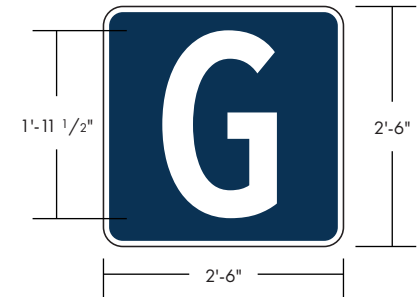
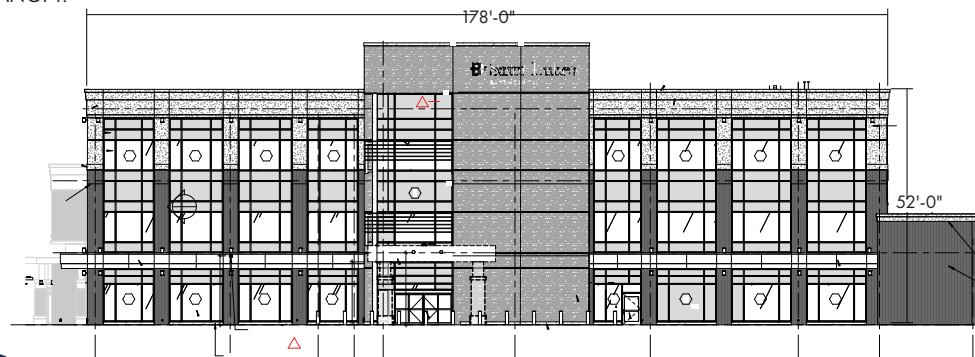


# BUILDING G CANOPY

North Elevaion



NOTE: ALL WORK HAS BEEN COMPLETED TO THIS CANOPY.



- 7125-197 LIGHT NAVY
- MP 18076 BRUSHED ALUMINUM



**CUSTOMER:** SAINT LUKE'S EAST HOSPITAL  
**NAME:** ANDY AMOR  
**LOCATION:** 100 NE ST LUKES BLVD  
 LEE'S SUMMIT, MO 64086

**DATE:** 11/12/2025  
**DESIGN NO:** QT-J34642  
**ARTIST:** JH  
**SCALE:** 1/2" = 1'

## SPECIFICATIONS

- PRODUCE AND INSTALL (1) FLUSH MOUNTED INTERNALLY ILLUMINATED "G". (MATCHES WHAT LUMINEO RECENTLY PROVIDED FOR OTHER SIDE OF CANOPY)
- "G" - WHITE ACRYLIC FACE OVERLAID WITH 7125-197 LIGHT NAVY, WITH BRUSHED ALUMINUM TRIM CAP AND MP 18076 BRUSHED ALUMINUM RETURNS
- ILLUMINATES WITH WHITE LEDS

**APPROVED:**

**DATE:**

ALL NOTED DIMENSIONS ARE APPROXIMATE AND MAY BE MODIFIED SLIGHTLY DURING MANUFACTURING TO ALLOW PROPER COMPONENT USAGE.

© 2025 LUMINOUS NEON, LLC. This design is the property of LUMINOUS NEON, LLC. Rights are transferred to the customer upon completion of order. This design is not to be used in whole or in part without the written permission of the company. The PANTONE (PMS) and/or vinyl colors shown on printed document are a four-color process simulation and may not match PANTONE and vinyl identified spot color standards. Use a PANTONE Color Reference Manual or vinyl swatch book for accurate display of colors.