



## DIVISION 1 - GENERAL REQUIREMENTS

### GENERAL REQUIREMENTS 01000

- The General Conditions of the Contract for Construction of A.I.A. Document A201, latest edition, forms part of this contract as if herein bound.
- Satisfy all applicable local codes and ordinances. Reference the cover sheet for list of codes.
- Contractor to pay for Construction Permit Fees, Excise Tax, Tap Fees, Ect. as applicable to the local Municipalities and Utility Companies.
- Contractor is to meet all Building Owner Standards and Instructions for work.

### PRODUCTS 01600

- Where a specific manufacturer's product is named including make or model number or other designation, it has been selected to establish the significant qualities related to type, function, dimension, in-service performance, physical properties, appearance, and other characteristics of the product. Unless otherwise indicated, provided the named product or a product that is equal to or exceeds the specified product.
- Deliver, store, and handle products using means and methods that will prevent damage, deterioration, and loss, including theft. Comply with manufacturer's written instructions.
- Provide products complete with accessories, trim, finish, fasteners, and other items needed for a complete installation and indicated use and effect.
- All products, and materials used in conjunction with, are to be installed in strict conformance with manufacturer's instruction.

### SPECIAL CONDITIONS 01100

- General Contractor shall provide all water, light, and power necessary during construction until the completion of the building. All extensions, controls, and equipment beyond the points of temporary service shall be provided under the work of the respective Division requiring the same.
- The General Contractor shall do all final cleaning of the building construction areas and wash windows.

### CUTTING AND PATCHING

- Contractor is to include as part of his scope all cutting and patching required through careful evaluation of the existing site and the construction documents. All holes, damages, defects, ect. in existing surfaces are to be patched to match existing conditions. Contractor shall coordinate the cutting of existing construction necessary to permit installation or performance of other work.
- Patching:** Patch construction by filling, repairing, refinishing, closing up, and similar operations. Patch with durable seams that are as invisible as possible. Use materials identical to existing materials. If identical materials are unavailable or cannot be used, use materials that, when installed, will match the visual and functional performance of existing materials. For exposed surfaces, use materials that visually match existing adjacent surfaces to the fullest extent possible. Before patching, verify compatibility with and suitability of substrates, including compatibility with existing and new finishes or primers.
- Cutting:** Cut existing construction by sawing, drilling, breaking, chipping, grinding, and similar operations, including excavation, using methods least likely to damage elements retained or adjoining construction. In general, use hand or small power tools designed for sawing and grinding, not hammering and chopping. Cut holes and slots as small as possible, neatly to size required, and with minimum disturbance of adjacent surfaces. Temporarily cover openings when not in use. Provide temporary support of work to be cut. Cut concrete using a cutting machine, such as an abrasive saw or a diamond-core drill.

## DIVISION 2 - SITE WORK

NO WORK THIS SECTION

## DIVISION 3 - CONCRETE

REFER TO CUTTING AND PATCHING

## DIVISION 4 - MASONRY

NO WORK THIS SECTION

## DIVISION 5 - METALS

### METAL STUD FRAMING

- Metal Studs and Runners: shall be as manufactured by Dietrich, Inryco/Milcor, USC, or approved equal. Studs shall be sized as indicated on the drawings and of gauge recommended by the manufacturer's literature. Double studs at door jambs shall be 20 gauge minimum. Standard stud spacing at no more than 16" O.C. unless otherwise noted on drawings.
- At all walls indicated to extend to underside of decking provide Dietrich SLP-TRK slotted deflection track. Install and Finish per manufacturer's recommendations.

## DIVISION 6 - WOODS AND PLASTIC

### CARPENTRY

- Each piece of framing lumber shall be identified by the grademark of an approved inspection agency or association. Wood framing and all rough carpentry items shall be installed in accordance with UBC and/or FHA requirements whichever is most restrictive.

## DIVISION 7 - THERMAL AND MOISTURE PROTECTION

### INSULATION

- Where insulating materials listed below will not be covered with gypsum board substitute specified insulation w/ product of same thickness and R-value and similar facing, but such shall have a flame spread rating of 25 or less and a smoke developed rating of 50 or less when tested in accordance with ASTM E84 unless more stringent requirements are listed for a specific product.
- Interior insulation shall be unfaced acoustical batt insulation in thickness to fill entire cavity.
- Insulation Schedule
  - Interior non-loadbearing walls: Unfaced Fiberglass Batts - Certainteed CertaPRO AcoustaTherm Batts

### SEALANTS

- Mildew-Resistant Silicone Rubber Sealant: Silicone rubber-based, one part elastomeric sealant, complying with FS TT-5-0021543, Class A, compounded specifically for mildew resistance and recommended by manufacturer for interior joints in wet areas; passing ANSI A136.1 test for mold growth.
- Silicone Sealant: One-part nonacid-curing silicone sealant complying with ASTM C920; Type 5, Grade NS, Class 25, paintable, for uses at casings, window casings and hollow metal to drywall and masonry.
- Joints and spaces to be caulked shall be clean, dry and free of dust, loose mortar or other foreign materials. After joints have been filled, they shall be neatly tooled to eliminate air pockets or voids and to provide a smooth, neat appearing surface.
- Non-Elastomeric Sealants and Caulking Compounds: 1-component acrylic sealant: FS-TT-5-00230, Class B, Type 11, solvent based solids 45% acrylic for uses at exterior window and door frame perimeters and flashing

## DIVISION 8 - DOORS AND WINDOWS

### WOOD DOORS

- Single swing interior doors shall be solid core premium grade veneer with matching edges. Finish, size and thickness to match existing, comply with requirements of ANSI/NYMA I.S. 1 and Section 1400 of ANI "Architectural Woodwork Quality Standards" except as otherwise indicated. Coordinate stain color with interior designer.

### FINISH HARDWARE

- Provide finish hardware for all doors in project. The Contractor shall verify all keying requirements with owner prior to installation. Finish to be 26d. Hardware mounting heights by the door and hardware institute "Recommended Locations for Builders Hardware". Comply with all ADA requirements for hardware.

## DIVISION 9 - FINISHES

### GYPSUM DRYWALL

- Materials shall meet the following standards:
  - Gypsum Wallboard - ASTM C36
  - Nails - ASTM C300
  - Metal Accessories - ASA A91.1
  - Water Resistant Gypsum Backing Board - ASTM G127D (paragraph 6.1)
- Use gypsum board fasteners that are recommended by gypsum board manufacturer except as otherwise indicated.
- Furnish and install all trim accessories, adhesives and joint treatments per manufacturer's recommendations.
- All gypsum board to be finished to Level 4 unless noted otherwise.
- Schedule: (basis of design)
  - Interior side of exterior walls: ½" Gold Bond XP Gypsum Board.
  - Interior partitions - general: ½" Gold Bond Gypsum Board.
  - Interior ceilings and soffits: ½" Gold Bond Gypsum Board.
  - Interior partitions in wet areas/toilet rooms: ½" Gold Bond XP Gypsum Board.
  - Interior partitions to receive wall tile: ½" Gold Bond XP Tile Backer
  - Interior partitions indicated to receive impact resistant gypsum board: ½" Gold Bond HI-impact XP Gypsum Board

### FLOORING GENERAL

- Patch, level and prepare all floors as recommended by flooring manufacturer for each type of flooring to be placed. Use trowelable leveling and patching compound to fill cracks, holes, and depressions in substrates. Trowelable Leveling and Patching Compounds shall be of Latex-modified, portland cement based or blended hydraulic cement based Formulation provided or approved by floor covering manufacturer for applications indicated.
- Transitions between floor finishes: See Finish Legend for edges of tile flooring. At all other locations transitions are to be tightly butted together (unless edge protection is required by flooring manufacturer) At all transitions where finished floor height of a flooring is higher than adjacent floor finish, raise adjacent flooring with ROPPE SUBLEVELER TS-1 so finish heights are equal.

### PAINTING GENERAL

- Paint shall be as manufactured by Sherwin Williams Paints or approved equal.

### SURFACE PREPARATION FOR PAINT

- General: Protect adjacent and underlying surfaces. Remove or mask electrical plates, hardware, light fixture trim, escutcheons, and fittings prior to preparing surfaces of finishing. Correct defects and clean surfaces capable of affecting work of this section. Seal marks that may bleed through surface finishes with compatible sealer.
- Galvanized Steel: Remove surface contamination and oils and wash with solvent.
- Uncoated Ferrous Metals: Remove grease, mill scale weld splatter, dirt and rust. Where heavy coatings of scale are evident, remove by hand or power tool wire brushing or sandblasting; wash with solvent. Apply treatment of phosphoric acid solution, ensuring weld joints, bolts and nuts are similarly cleaned. Spot Prime paint after repairs.
- Shop primed Ferrous Metals: Sand and scrape to remove loose primer and rust. Feather edges to make patches inconspicuous. Clean with solvent. Prime bare steel surfaces.
- Other existing Surfaces: Remove loose, flaking, powdery, and peeling paints. Light sand painted surfaces. Fill holes, cracks, depressions and other imperfections with compatible patching compound; sand flush with surface. Remove oil, grease, and wax by scraping; solvent wash and thoroughly rinse. Remove rust by wire brushing to expose base metal.

### PAINTING SCHEDULE

- Paint all new interior gypsum board walls:
  - 1 ct. PrepRite 200 Latex Primer and
  - 2 cts. ProMar 200 Int. Latex Eg-Shel
- Paint all new and existing interior gypsum board walls in wet areas (Toilet and Janitor Rooms):
  - 1 ct. PrepRite 200 Latex Primer and
  - 2 cts. Waterbased Catalyzed Epoxy
- Interior gypsum board ceilings and soffits (unless noted otherwise):
  - 1 ct. PrepRite 200 Latex Primer
  - 2 cts. ProMar 200 Int. Latex Flat
- Interior doors, frames, and casings:
  - Touch up factory prime coat with compatible Metal Primer or
  - 1 ct. Sprayed All Surface Enamel oil Primer
  - 2 cts. Sprayed ProMar 200 Int. Alkyd Eg-Shel Enamel

## DIVISION 10 - SPECIALTIES

### FIRE EXTINGUISHER

- Provide fire extinguishers as indicated per plan. Fire extinguisher shall be Cosmic BE (2A,10B,C) by J.L. Industries or approved equal. Cabinets to be Ambassador by J.L. Industries or approved equal, Not Fire-Rated, Tub - 10 1/2 x 24 x 5 1/2 inches. Trim Material - Steel, white epoxy primer finish, Trim Style Semi recessed 3" rolled edge. Door Style - Vertical Duo Panel with pull handle, Door Glazing - Clear Safety Glass, with Die Cut Letters - Vertical Red Reverse.

## DIVISION 11 - EQUIPMENT

COORDINATE MEDICAL EQUIPMENT INSTALLATION WITH OWNER.

## DIVISION 12 - FURNISHINGS

### CASEWORK

- The General Contractor or his Subcontractor shall provide all necessary work to provide plastic laminate casework at locations indicated on these documents. Work under the contract shall include all labor, materials, and incidentals necessary to execute a complete workmanlike job in accordance with the requirements of all applicable codes and ordinances including the Americans with Disabilities Act Guidelines. The General Contractor or his Subcontractor to review shop drawings with Owner to verify casework layout and dimensions.
- Casework shell units are to be constructed with 3/4" particle board sides and 1/2" particle board backs with plastic laminate or wood veneers on all exterior exposed vertical faces and also on the bottom face of upper wall units. Exposed edges to be .020 polyvinyl chloride impact/chip-mar-resistant edges. All interior surfaces on units with doors/drawers to be 85 gram melamine. For open units refer to interior elevations for interior surface and edges. Base cabinets are to be nominal 24" deep. Upper cabinets are to 14" deep O.A. from back of cabinet at wall to face of doors. Full height cabinets are to be 26" deep unless noted otherwise. Full height cabinets are to be constructed with solid center shelf with doors above and below.
- Countertops: Outside corners of all countertops to have 1/2" radius.
  - Plastic Laminate countertops are to be 1/4" thick with plastic laminate faces and 3mm (1/8") flexible PVC edges. Backsplashes are to be provided as indicated on the interior elevations, and are to have matching plastic laminate on all exposed faces.
- Wood Door Drawer and False Front Panels to have solid oak stile and rail oak panels to match existing dimensions and profiles of existing to remain optical display casework. Stain and finish per painting specifications.
- Plastic Laminate Door, Drawer, and False Front Panels to have plastic laminate faces, 85 gram melamine backs, and 3mm (1/8") high impact resistant PVC edges.
- Shelving to be 1" particle board fully adjustable on 1-1/4" centers. Edge to be .020 polyvinyl chloride impact/chip-mar-resistant edge. Shelving inside units with doors to have 85 gram melamine on top and bottom. Shelving of open units are to have plastic laminate to match the exterior.
- Hinges shall be European concealed heavy duty hinges. All doors over 36" tall to have three hinges. All pulls are to be Sugatsune SN-95/5 morised into edge of drawers and doors. Removable panels are to be secured with Hafele Keku push fit fasteners.
- Drawer boxes to be Blum Meta-Box system or Grass UniDrawer (Unless noted otherwise). Slides to have 100 pound load rate. Drawer box depth is to be within 2" of drawer face panel height. Drawers indicated on drawings as FILE are to have white melamine box with KV 8505 slides and Hafele letter width file frame kit.
- Provide one 2" dia standard plastic grommet with hole liner and slotted cover for every three linear feet of countertop that has knee space below. If knee space is less than three feet wide provide two grommets. Also provide one 2" dia standard plastic grommet at each location with power and/or data installed in cabinet. Color as selected by interior designer. Exact locations of grommets to be established and be confirmed by owner prior to installation.
- All particle board is to be of 45-pound density particle board. All plastic laminate is to be General Purpose Type 107 H65 laminate as manufactured by Wilsonart or approved equal.
- Provide fillers to match casework at sides of all casework abutting adjacent vertical surfaces. Also provide filler panels above upper cabinets where distance between upper cabinet and ceiling above is less than 8".



**GUY GRONBERG  
ARCHITECTS, P.C.**  
113 SE 34th St.  
Lee's Summit, MO 64063  
Phone: 816.524.0870  
Fax: 816.524.0870



**Bromley • Broyles • Luff**  
680 SE Bayberry Ln Suite 107, Lee's Summit, MO 64063

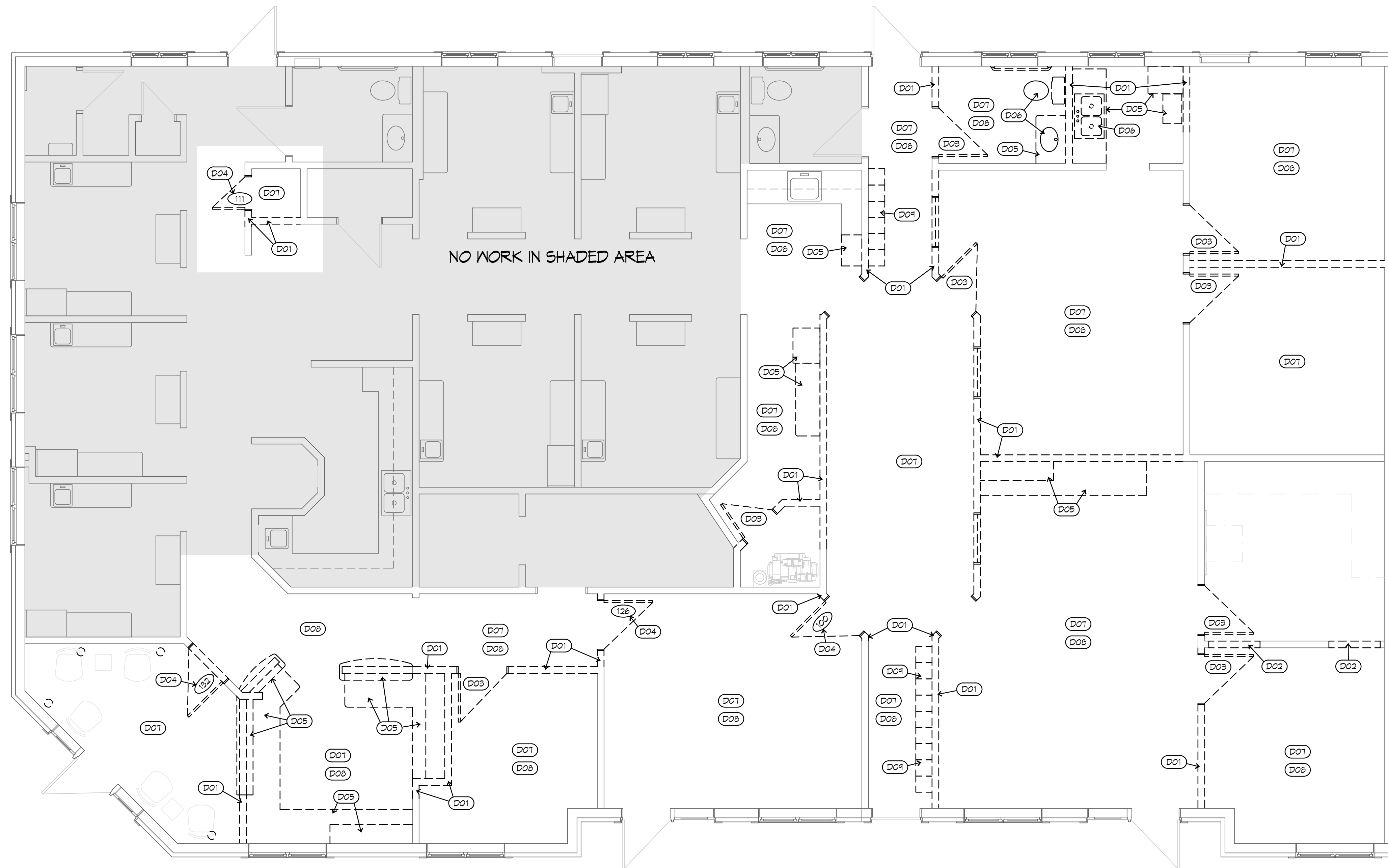
This drawing has been prepared by the architect or instrumented engineer as indicated by the architect's or instrumented engineer's seal and signature. It is to be used only for the project and location indicated on the drawing. It is not to be used for any other project, location, or purpose without the written consent of the architect or instrumented engineer. The architect or instrumented engineer is not responsible for any errors or omissions in this drawing.

REV#	DATE	DESCRIPTION

Issue Date: 12-23-28  
Project #: 25022

SPECIFICATIONS

A1



1 DEMOLITION PLAN  
1/4"=1'-0"



DEMOLITION GENERAL NOTES

- THROUGHOUT PRIMARY AREA OF WORK ALL EXISTING ELECTRICAL OUTLETS AND SIMILAR DEVICES ARE EXISTING TO REMAIN AT ALL WALLS THAT ARE UNDISTURBED. WHERE WALLS ARE DEMOLISHED REMOVE AND DISCARD ALL ELECTRICAL OUTLETS AND SIMILAR DEVICES. COORDINATE CIRCUITING AND REMOVE AND DISCARD ONLY THE UNUSED CONDUIT TO EXTENTS THAT IT IS UNUSED.
- THROUGHOUT AREA OF WORK WHERE NEW PAINT FINISHES ARE INDICATED ON THE FINISH SCHEDULE REMOVE AND DISCARD EXISTING WALL COVERINGS, PATCH AND REPAIR SURFACES TO PROVIDE A SMOOTH FINISH.

DEMOLITION PLAN NOTES

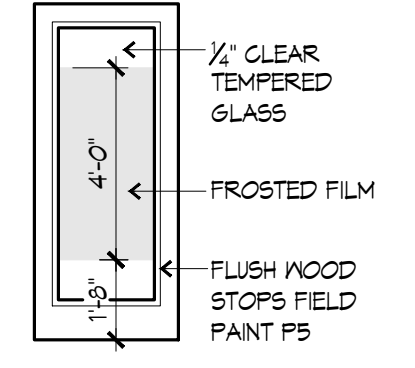
- (D01) REMOVE AND DISCARD WALL AND FRAMING
- (D02) REMOVE AND DISCARD A PORTION OF WALL AND FRAMING AND REFRAME AS REQUIRED TO PROVIDE NEW OPENING INDICATED ON FLOOR AND CEILING PLANS.
- (D03) REMOVE AND RECLAIM DOOR, FRAME, AND CASINGS. REMOVE AND DISCARD HARDWARE.
- (D04) REMOVE AND RELOCATE DOOR FRAME AND HARDWARE FROM LOCATION INDICATED BY DOOR TAG ON DEMOLITION PLAN AND TO LOCATION WITH SAME DOOR TAG ON FLOOR PLAN. MODIFY HARDWARE PER DOOR AND FRAME SCHEDULE.
- (D05) REMOVE AND DISCARD CASEWORK AND COUNTERTOPS.
- (D06) REMOVE AND DISCARD PLUMBING FIXTURES. REMOVE AND DISCARD UNUSED SUPPLY LINES BACK TO MAIN TRUNK LINES AND CAP. REMOVE AND DISCARD UNUSED WASTE LINE TO BEYOND FINISH SURFACE AND CAP.
- (D07) REMOVE AND DISCARD FLOORING AND WALL BASE THROUGHOUT ROOM OR AREA. COORDINATE SCOPE WITH NEW WORK SHOWN ON FLOOR PLAN.
- (D08) THROUGHOUT ROOM OR AREA REMOVE AND RECLAIM FULL, CLEAN, UNDAMAGED ACOUSTICAL CEILING TILES. REMOVE AND DISCARD PARTIAL, STAINED AND DIRTY ACOUSTICAL CEILING. REMOVE AND DISCARD EXPOSED T-GRID. COORDINATE SCOPE WITH NEW WORK SHOWN ON CEILING PLAN.
- (D09) REMOVE AND RELOCATE LOCKERS TO LOCATION INDICATED BY FLOOR PLAN NOTE F01.

DOOR AND FRAME SCHEDULE

DOOR NUMB.	NOMINAL SIZE	FRAME	DOOR	HRDVL	NOTES
100	RELOCATE 3'-0" X 6'-8" X 1 3/4"	RFC	RDR	01	
111	RELOCATE 2'-0" X 6'-8" X 1 3/4"	WDF	WDD	02	
124	DOOR 3'-0" X 6'-8" X 1 3/4"	WDF	WDD	03	
125	DOOR 2'-8" X 6'-8" X 1 3/4"	WDF	WDD	03	
126	RELOCATE 3'-0" X 6'-8" X 1 3/4"	RFC	RDR	02	
130	DOOR 3'-0" X 6'-8" X 1 3/4"	WDF	WDD	04	
131	DOOR 3'-0" X 6'-8" X 1 3/4"	WDF	WDD	05	
132	RELOCATE 3'-0" X 6'-8" X 1 3/4"	RFC	RDR	02	
134	DOOR 3'-0" X 6'-8" X 1 3/4"	WDF	WDD	05	
136	DOOR 3'-0" X 6'-8" X 1 3/4"	WDF	GLD	04	
137	DOOR 3'-0" X 6'-8" X 1 3/4"	WDF	GLD	04	

DOOR HARDWARE SCHEDULE

- HARDWARE SET 01**  
 3 EA RELOCATE HINGE  
 1 EA RELOCATE LEVER LATCHSET  
 1 EA 4030-3071EDA 626 LCN
- HARDWARE SET 02**  
 3EA RELOCATE HINGE  
 1EA RELOCATE LEVER LATCHSET
- HARDWARE SET 03**  
 EACH TO HAVE:  
 3 EA HINGE 5B81HM 4.5 X 4.5 626 IVE  
 1 EA PRIVACY ND40 WITH INDICATOR TRIM BRK 626 SCH  
 1 EA CLOSER 4030-3071 626 LCN  
 1 EA WALL STOP M640TCGV 626 IVE  
 1 SET SEALS 5050G NGP  
 1 EA CONCEALED BOTTOM 2295 NGP
- HARDWARE SET 04**  
 EACH TO HAVE:  
 3 EA HINGES 5B81HM 4.5 X 4.5 626 IVE  
 1 EA OFFICE ALX390 BRK 626 SCH  
 1 EA WALL STOP M640TCGV 626 IVE
- HARDWARE SET 05**  
 EACH TO HAVE:  
 3 EA HINGE 5B81 4.5 X 4.5 626 IVE  
 1 EA PASSAGE ALX10 SAT 626 SCH  
 1 SET SEALS 5075G AND 5060G NGP  
 1 EA CONCEALED BOTTOM 229 5 NGP  
 1 SET TWO CORNER PADS 60FP NGP



GLD  
PRIMED HDF STRUCTURAL COMPOSITE 3-PLY DOOR - FIELD PAINT FS

2 DOOR ELEVATION  
1/4"=1'-0"

DOOR AND FRAME TYPES

- FRAME TYPES**
- WDF WOOD FRAME AND CASINGS TO BE NEW OR AT CONTRACTOR OPTION MAY BE RECLAIMED FROM THE OPENINGS INDICATED BY DEMOLITION PLAN NOTE D03. FILL ALL DAMAGE, SAND SMOOTH PRIME AND PAINT FS.
  - RFC FRAME AND CASINGS TO BE RELOCATED FROM THE OPENINGS INDICATED BY DEMOLITION PLAN NOTE D04. PAINT FS.
- DOOR TYPES**
- WDD WOOD DOOR TO BE NEW OR AT CONTRACTOR OPTION MAY BE RECLAIMED FROM THE OPENINGS INDICATED BY DEMOLITION PLAN NOTE D03. FILL ALL DAMAGE, SAND SMOOTH PRIME AND PAINT FS.
  - RDR DECORATIVE FROSTED GLASS AND WOOD DOOR TO BE RELOCATED FROM THE OPENINGS INDICATED BY DEMOLITION PLAN NOTE D04. PAINT FS.
  - GLD FULL VIEW GLASS DOOR PER ELEVATION 2 THIS SHEET.

DOOR AND FRAME NOTES

- DOOR, FRAME AND HARDWARE IS TO BE RELOCATED FROM LOCATION INDICATED BY DEMOLITION PLAN



**GUY GRONBERG ARCHITECTS, P.C.**  
 113 SE 24th St.  
 Lee's Summit, MO 64063  
 Phone: 816.524.0870  
 Fax: 816.524.0570

**Bromley • Broyles • Luff**  
 680 SE Bayberry Ln Suite 105, Lee's Summit, MO 64063

This drawing has been prepared by the undersigned as an architect or professional engineer and is intended for use on this project only. It is not to be used for any other project without the written consent of the undersigned. The undersigned is not responsible for any errors or omissions in this drawing or for any consequences arising therefrom. The undersigned is not responsible for any damage to property or persons resulting from the use of this drawing.

REV#	DATE	DESCRIPTION

Issue Date: 12-23-25  
 Project #: 25022

DEMOLITION PLAN  
**A2**

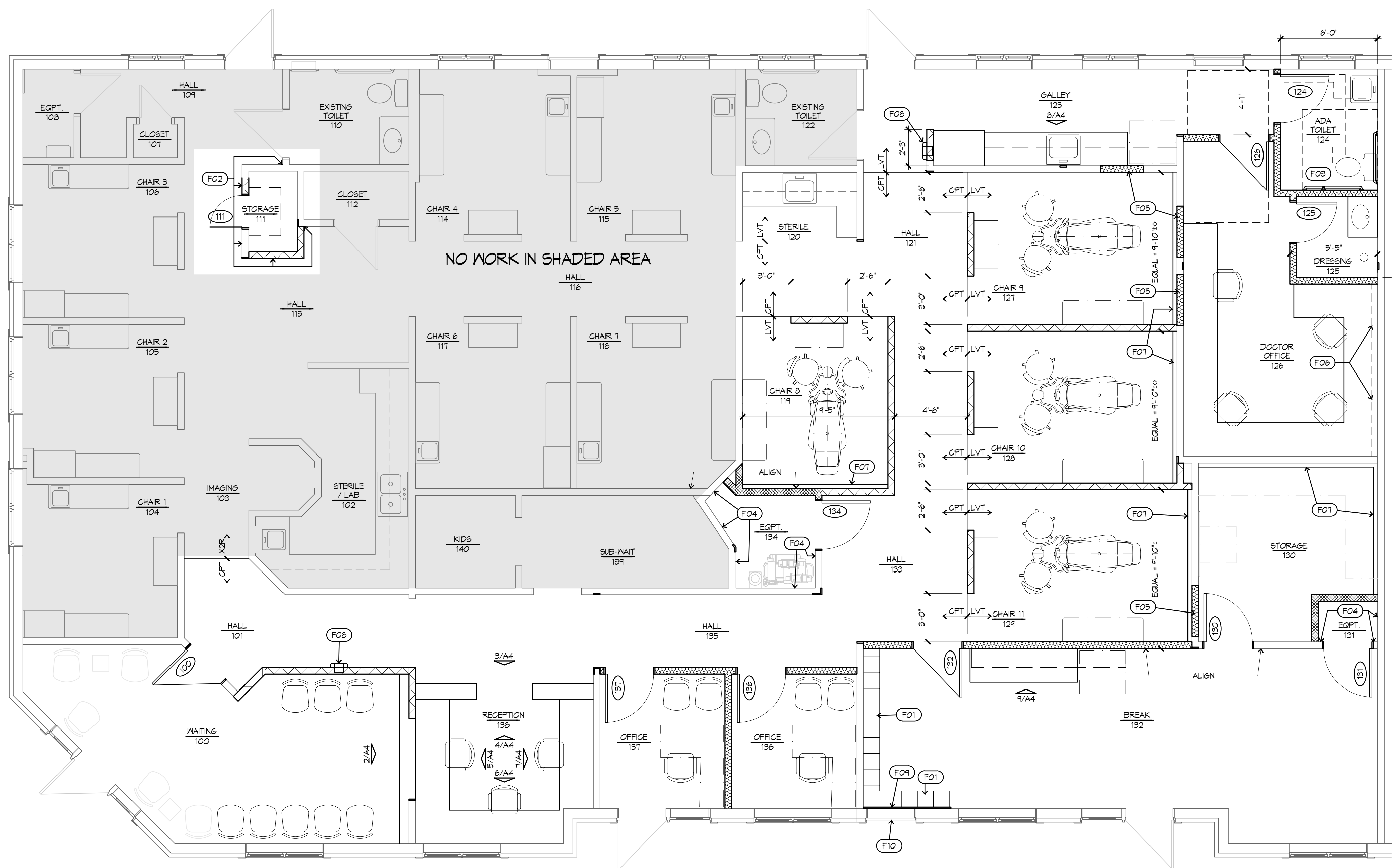


Bromley • Broyles • Luff  
680 SE Bayberry Ln Suite 105, Lee's Summit, MO 64063

This drawing has been prepared by or on behalf of the architect, engineer, or contractor and is not to be used for any other purpose without the written consent of the architect, engineer, or contractor. The user of this drawing assumes all liability for any errors or omissions. The architect, engineer, or contractor is not responsible for any errors or omissions in this drawing or for any consequences arising therefrom.

Table with columns: REV#, DATE, DESCRIPTION. Includes fields for Issue Date (12-29-25) and Project # (25022).

FLOOR PLAN  
A3



1 FLOOR PLAN  
1/4"=1'-0"  
PLAN NORTH

WALL TYPE NOTES

- 1. PROVIDE SOLID BLOCKING FOR DOORS, WINDOWS, TOILET PARTITION, ACCESSORIES, HANDRAILS, LAVATORY BRACES, CASEWORK, SHELVING ETC. AS REQUIRED BY MANUFACTURER AND ALL WORK DONE BY CARPENTRY AND MILLWORK TRADES. ALL WOOD REQUIRED BY BUILDING CODES SHALL MEET ALL REQUIREMENTS TO THE CODE OF UNDERWRITERS LABORATORIES, INC. VERIFY THE DEPTH OF WALLS PRIOR TO INSTALLING RECESSED FIXTURES.
2. ALL EXPOSED EDGES AND / OR CORNER ON ALL GYPSUM WALL BOARD CONSTRUCTION SHALL HAVE A METAL CORNER TRIM, TAPED AND SPACKLED.
3. ALL OPENINGS IN GYPSUM BOARD PARTITIONS SHALL BE DOUBLE STUDDED.
4. TOP OF ALL WALLS INDICATED IN WALL TYPES THIS SHEET ARE TO BE LATERALLY BRACED AS FOLLOWS:
4.1. FOR WALLS INDICATED TO BE EXTEND TO UNDERSIDE OF STRUCTURAL ELEMENTS OR DECKING; PROVIDE DEEP LEG DEFLECTION TRACK AT TOP OF WALL INSTALLED PER MANUFACTURER'S INSTRUCTIONS.
4.2. FOR ALL OTHER WALLS;
4.2.a. FOR WALLS UNDER 8'-0" IN LENGTH (WITHOUT A PERPENDICULAR WALL ON EITHER SIDE) THE TOP TRACK SHALL RESIST LATERAL LOADS.
4.2.b. FOR WALLS ABOVE 8'-0" AND UNDER 16'-0" CONTRACTOR IS TO PROVIDE 1-1/2" 16GA U-CHEMEL LOCATED IN PUNCHED STUDS WITHIN 1'-0" OF TOP OF WALL AND SECURED WITH DIETRICH EASYCLIP U-SERIES AT EACH STUD. U-CHEMEL TO BE AND IS TO RUN CONTINUOUS FULL LENGTH OF WALL. (AT CONTRACTORS OPTION STUD KICKERS AS INDICATED BELOW MAY BE USED IN LIEU OF U-CHEMEL.)
4.2.c. FOR WALLS ABOVE 16'-0" PROVIDE 45° STUD KICKERS UP TO STRUCTURE AT 4'-0" O.C. ALTERNATING DIRECTIONS.
5. IN THE FOLLOWING ROOMS PROVIDE MOISTURE RESISTANT GYPSUM BOARD IN LIEU OF THE STANDARD GYPSUM BOARD INDICATED IN WALL TYPES BELOW: TOILET 104, TOILET 101, AND EQUIPMENT 120.

WALL TYPE LEGEND

- EXISTING WALL TO REMAIN. PREPARE, PATCH, SPACKLE AND SAND, ETC., TO PROVIDE A SMOOTH FINISH AND AS REQUIRED TO RECEIVE NEW FINISHES.
3/8" 25 GAUGE MTL. STUDS @ 16" O.C. WITH 3/8" GYPSUM BOARD ONE SIDE. EXTEND TO MINIMUM 3" ABOVE LOWEST ADJACENT CEILING.
3/8" 25 GAUGE MTL. STUDS @ 16" O.C. WITH 3/8" GYPSUM BOARD EACH SIDE AND 3/8" UNFACED BATT INSULATION. EXTEND TO MINIMUM 3" ABOVE LOWEST ADJACENT CEILING.
3/8" 25 GAUGE MTL. STUDS @ 16" O.C. WITH 3/8" GYPSUM BOARD ON OUTSIDE, TWO LAYERS 3/8" GYPSUM SOUND BOARD ON EQUIPMENT ROOM SIDE, SIDE AND 3/8" UNFACED BATT INSULATION. EXTEND TO UNDERSIDE OF STRUCTURE ABOVE.

FINISH SCHEDULE

Table with columns: RM. #, ROOM NAME, FLOOR, BASE, WALL (NORTH, EAST, SOUTH, WEST), NOTE. Lists finishes for rooms 100-140.

FINISH SCHEDULE NOTES

- 1. WALLS OF EQUIPMENT ROOM ARE TO BE FINISHED TO LEVEL 4, PRIMED AND PAINTED TO 10'-0" AFF. ABOVE 10'-0" WALLS AND CEILING ARE TO BE FINISH TO LEVEL 2 WITH A THIN COAT JOINT COMPOUND APPLIED OVER TAPE AND FASTENER HEADS, WITHOUT PAINT.

ADA TOILET ROOM TYPICAL NOTES

- 1. PROVIDE WATER CLOSET WITH SEAT HEIGHT BETWEEN 17 AND 19 INCHES MEASURED TO TOP OF THE SEAT. FLUSH CONTROLS SHALL BE LOCATED ON THE OPEN SIDE OF THE WATER CLOSET. CENTERLINE OF WATER CLOSET SHALL BE 16" TO 18" FROM THE SIDE WALL.
2. PROVIDE LAVATORY WITH RIM MOUNTED AT 34 INCHES MAXIMUM ABOVE THE FINISH FLOOR OR GROUND. BOTTOM OF APRON TO BE 24 INCHES MINIMUM ABOVE THE FINISH FLOOR OR GROUND. WATER SUPPLY AND DRAIN PIPES UNDER LAVATORY SHALL BE INSULATED OR OTHERWISE CONFIGURED TO PROTECT AGAINST CONTACT. THERE SHALL BE NO SHARP OR ABRASIVE SURFACES UNDER LAVATORY. THE CENTERLINE OF THE LAVATORY SHALL BE A MINIMUM OF 15" FROM THE SIDE WALL.
3. PROVIDE MIRROR MOUNTED 40" MAXIMUM TO BOTTOM OF REFLECTIVE SURFACE.
4. PROVIDE TOILET PAPER DISPENSER. TOILET PAPER DISPENSER TO BE 7 INCHES FROM RIM OF TOILET TO CENTER OF TOILET PAPER ROLL (IN PLAN HORIZONTAL.) TOILET PAPER TO BE 14" MINIMUM ABOVE FINISHED FLOOR.
5. PROVIDE GRAB BARS AS FOLLOWS: SIDE HORIZONTAL GRAB BAR TO BE 42" MIN LONG, 12" FROM BACK WALL, AND 35"-38" AFF. SIDE VERTICAL GRAB BAR TO BE 18" MIN LONG, 40" FROM BACK WALL, AND 40" AFF TO BOTTOM OF BAR. REAR HORIZONTAL GRAB BAR TO BE 36" MIN LONG, 6" MAX FROM SIDE WALL, AND 35"-36" AFF. ALL GRAB BARS TO HAVE 1/2" MAX DIA. AND 1/2" OFFSET FROM WALL.
6. SOAP AND PAPER TOWEL DISPENSERS (IF PROVIDED) TO BE INSTALLED AT 34" AFF TO SOAP SPOUT OR TOWEL DISPENSING LOCATION.
7. PROVIDE ON EXTERIOR LATCH SIDE OF DOOR MATTE FINISH TOILET ROOM SIGN 60" A.F.F. WITH BRAILLE AND WITH RAISED CONTRASTING LETTERS 3/8" TO 2" TALL WITHOUT SERIFS.

FLOOR PLAN NOTES

- (F01) INSTALL LOCKERS INDICATED TO BE RELOCATED BY DEMOLITION PLAN NOTE D04
(F02) PAINT WALL P1 FROM INSIDE CORNER TO INSIDE CORNER
(F03) TOILET ROOM IS TO BE CONSTRUCTED AND FIXTURES AND ACCESSORIES ARE TO BE INSTALLED TO CONFORM TO THE REQUIREMENTS OF THE TOILET ROOM TYPICAL NOTES THIS SHEET.
(F04) EXTEND EXISTING WALL CONSTRUCTION OF EQUIPMENT ROOM TO UNDERSIDE OF STRUCTURE ABOVE. INSTALL TWO LAYERS OF 3/8" GYPSUM SOUND BOARD ON EQUIPMENT ROOM SIDE OF WALL. PROVIDE ACOUSTICAL SEALANT AT ALL PERIMETERS AND THROUGH WALL PENETRATIONS.
(F05) INFILL OPENINGS WITH 3/8" GYPSUM BOARD EACH SIDE OF FRAMING. TAPE, MUD, AND FINISH SURFACE FLUSH WITH EXISTING WALL ON BOTH SIDES.
(F06) FROM FLOOR TO UNDERSIDE OF COUNTERTOP, INSTALL KNEEWALL OF 3/8" GYPSUM BOARD ON 3/8" METAL STUDS AT 16" O.C.
(F07) ON A DESIGN BUILD BASIS CONTRACTOR IS TO CONSTRUCTION UTILITY ENCLOSURE AT BASE OF WALL UTILIZING 3/8" THICK MDF TRIM. PRIME AND PAINT.
(F08) PROVIDE FIRE EXTINGUISHER AND CABINET PER SPECIFICATIONS.
(F09) OVERLAY WALL BEHIND LOCKERS WITH ONE LAYER OF 3/8" GYPSUM BOARD FULL HEIGHT.
(F10) EXISTING DOOR IS TO BE CLOSED AND LOCKED WITH DEADBOLT. REMOVE EXISTING SUITE DESIGNATION. PROVIDE A SIGN AFFIXED TO THE EXTERIOR SIDE OF THE DOOR WITH THE WORDS 'DOOR BLOCKED'. THE SIGN SHALL CONSIST OF LETTERS HAVING A PRINCIPAL STROKE OF NOT LESS THAN 1/2 INCH (12.7 MM) WIDE AND NOT LESS THAN 3 INCHES (76.2 MM) HIGH ON A CONTRASTING BACKGROUND.

FINISH GENERAL NOTES

- 1. FINISH MATERIALS LISTED HERE-IN ARE TO ESTABLISH THE SIGNIFICANT QUALITIES RELATED TO TYPE, FUNCTION, DIMENSION, PRICE, PHYSICAL PROPERTIES, APPEARANCE, AND OTHER CHARACTERISTICS OF THE PRODUCT. FINAL SELECTION OF ALL FINISHES ARE TO BE CONFIRMED BY OWNER OR OWNER'S INTERIOR DESIGNER.
2. PAINT FINISHES INDICATED TO BE ACCENT COLOR ARE TO BE VERIFIED BY OWNER IN FIELD PRIOR TO BEING APPLIED TO WALLS OR SOFFITS.
3. WHERE NEW FLOOR FINISHES ARE INDICATED ON THE FINISH SCHEDULE, ANY EXISTING FLOORING IS TO BE REMOVED AND DISCARDED. SUBFLOOR IS TO BE PREPARED AS REQUIRED TO RECEIVE NEW FINISH INDICATED.
4. PATCH, LEVEL AND PREPARE ALL FLOORS AS RECOMMENDED BY FLOORING MANUFACTURER FOR EACH TYPE OF FLOORING TO BE PLACED. USE TROWELABLE LEVELING AND PATCHING COMPOUND TO FILL CRACKS, HOLES, AND DEPRESSIONS IN SUBSTRATES. TROWELABLE LEVELING AND PATCHING COMPOUNDS SHALL BE OF LATEX-MODIFIED, PORTLAND CEMENT BASED OR BLENDED HYDRAULIC CEMENT BASED FORMULATION PROVIDED OR APPROVED BY FLOOR COVERINGS MANUFACTURER FOR APPLICATIONS INDICATED.
5. INTERIOR FINISHES MUST CONFORM TO THE GOVERNING CODE FOR 'CLASS III' MAX. 25 FOR SMOKE DENSITY CLASSIFICATION. MAX. FLAME SPREAD OF 200.
6. COLOR OF ALL LIGHT SWITCHES, RECEPTACLES AND PLATE COVERS TO BE SELECTED BY INTERIOR DESIGNER.

FINISH LEGEND

- EXISTING TO REMAIN
X2R EXISTING TO REMAIN FINISHES. WHERE FINISH IS DISTURBED DUE TO INSTALLATION OF NEW WORK, PATCH AND REPAIR FINISHES TO MATCH EXISTING.
FLOORING
CPT CARPET; CONTRACTOR SHALL PROVIDE FOR AN ALLOWANCE OF \$25.00 A SQUARE YARD FOR THE PURCHASE OF THE CARPET MATERIAL ONLY. THIS PRICE DOES NOT INCLUDE LABOR, OVERHEAD AND PROFIT, SHIPPING, TAXES, AND MATERIALS FOR INSTALLATION. ALL OF THESE ARE ADDITIONAL TO THE \$25.00 AND SHOULD BE ADDED TO THE PRICE AND INCLUDED IN THE BASE BID. INSTALL CARPET PER MANUFACTURER'S RECOMMENDATIONS.
LVT WOOD LOOK VINYL TILE. MANNINGTON COMMERCIAL AMTICO WOOD TILE WITH A TICK FINISH AND INSTALLED IN A RANDOM BOND. INSTALL WITH AMTICO RP18 ADHESIVE. COLORWAY TO BE SELECTED FROM MANUFACTURER'S FULL RANGE. LONG DIRECTION OF TILE IS TO RUN IN THE PLAN EAST - WEST DIRECTION THROUGHOUT SUITE.
BASE
MRB MILLWORK RUBBER BASE. JOHNSONITE MILLWORK RESILIENT WALL BASE, MANDALAY 3/8" T X 4 1/2" H, A RECTANGULAR SHAPED PROFILE WITH A 45° CHAMFER TOP. COLOR TO BE SELECTED FROM MANUFACTURER'S FULL RANGE.
RBR RUBBER BASE ROLLED GOODS. JOHNSONITE WALL BASE, 4" HIGH, COVE TYPE WITH TOE, ROLLED GOODS, TO MEET THE PERFORMANCE AND DIMENSIONAL REQUIREMENTS OF ASTM F-1061, TYPE TP.

PAINT

- NOTE: ALSO REFER TO PAINT SCHEDULE IN SPECIFICATIONS FOR PAINTS.
P1 PRIMARY FIELD COLOR: (TO BE DETERMINED)
P2 SHERWIN WILLIAMS TRUE WHITE
P3 ACCENT PAINT COLOR: (TO BE DETERMINED)
P4 TWO PART EPOXY PAINT COLOR: (TO BE DETERMINED)
P5 DOORS, FRAMES, AND CASINGS COLOR (TO BE DETERMINED)
CASEWORK AND MILLWORK FINISHES
L1 WILSONART WOOD LOOK LAMINATE WITH FINE GRAIN 18 PREMIUM FINISH (TO BE DETERMINED)
L2 WILSONART HD HIGH DEFINITION LAMINATE WITH 35, 45, OR 55 PREMIUM FINISH (TO BE DETERMINED)
L3 WILSONART GENERAL PURPOSE TYPE 101 H65 LAMINATE. (TO BE DETERMINED)
L4 WILSONART GENERAL PURPOSE TYPE 101 H65 LAMINATE. (TO BE DETERMINED)
QTZ QUARTZ SURFACE SHALL BE WILSONART QUARTZ. COLOR TO BE SELECTED FROM MANUFACTURER'S FULL RANGE
S61 SOLID SURFACE SHALL BE WILSONART SOLID SURFACE. COLOR TO BE SELECTED FROM FROM PRICE GROUP 5.



1 CEILING PLAN  
1/4"=1'-0"

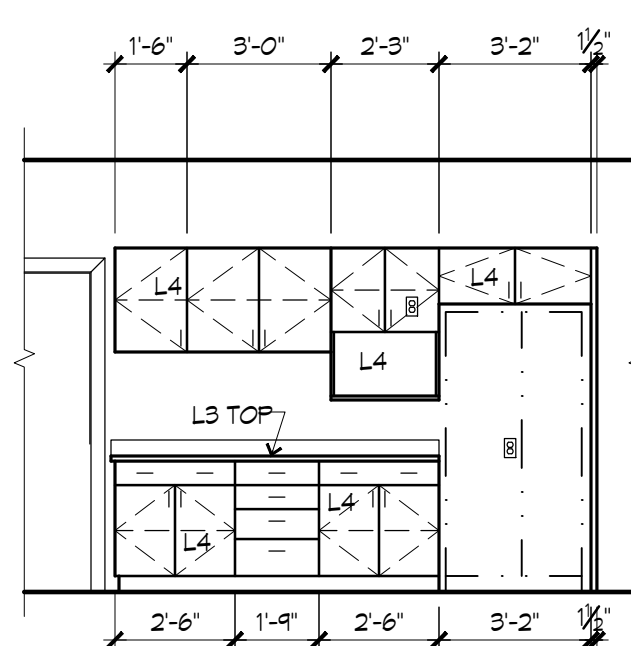


CEILING LEGEND

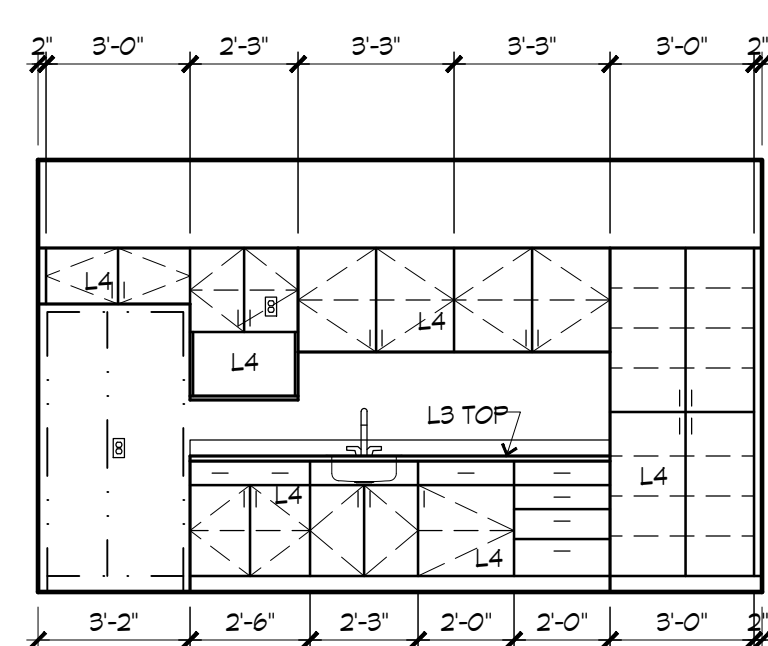
- EXISTING TO REMAIN EXPOSED T-GRID AND ACOUSTICAL CEILING TILES. PATCH AND REPAIR TO ACCOMMODATE NEW LAYOUT AND LIGHT FIXTURES. REPLACE DAMAGED AND STAINED ACOUSTICAL TILES.
- RECLAIMED 2X4 ACOUSTICAL TILES AS INDICATED BY DEMOLITION PLAN NOTE D08. INSTALLED IN NEW 3/4" EXPOSED T-GRID SPLICED INTO EXISTING TO REMAIN 3/4" EXPOSED T-GRID
- EXISTING TO REMAIN EXPOSED T-GRID AND NEW 2X4 REGULAR TILES TO MATCH THOSE BELOW.
- NEW 2X2 FLUSH LAY-IN ACOUSTICAL TILE TO MATCH EXISTING TILE IN CHAIR 1 RM104 INSTALLED IN NEW 3/4" EXPOSED T-GRID.

CEILING PLAN NOTES

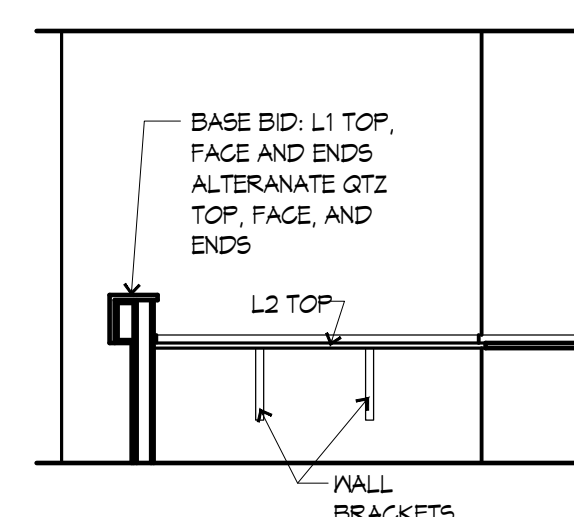
- (C01) EXISTING TO REMAIN CEILING IN THIS ROOM OR AREA. PATCH AND REPAIR CEILING AND GRID TO MATCH EXISTING.
- (C02) NEW 5/8" GYPSUM BOARD HEADER AT HEIGHT TO MATCH HEADERS OF ROOM CHAIR 1 #118.
- (C03) NEW 5/8" GYPSUM BOARD HEADER AT 1" BELOW LOWEST ADJACENT CEILING
- (C04) EXISTING TO REMAIN GYPSUM BOARD HEADER - PAINT.
- (C05) NEW GYPSUM BOARD SOFFIT TO MATCH HEIGHT AND DEPTH OF EXISTING SOFFIT IN WAITING ROOM.
- (C06) NO CEILING IN THIS ROOM OR AREA



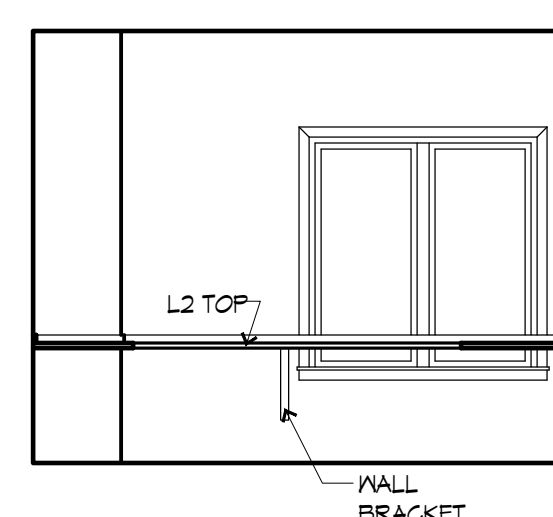
9 BREAK 132  
1/4"=1'-0"



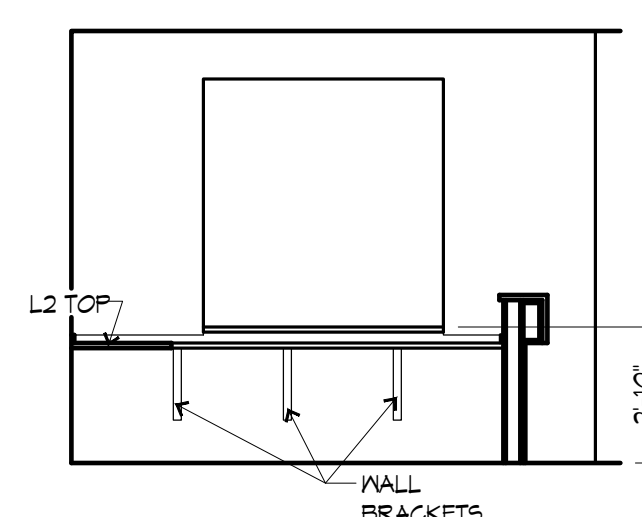
8 GALLEY 123  
1/4"=1'-0"



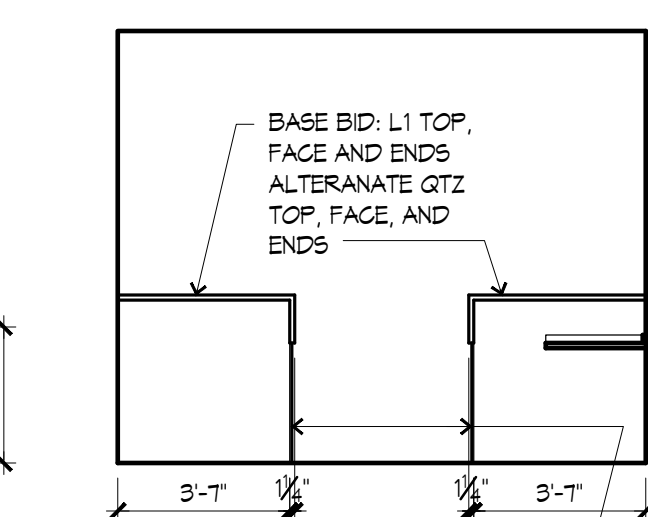
7 RECEPTION 136  
1/4"=1'-0"



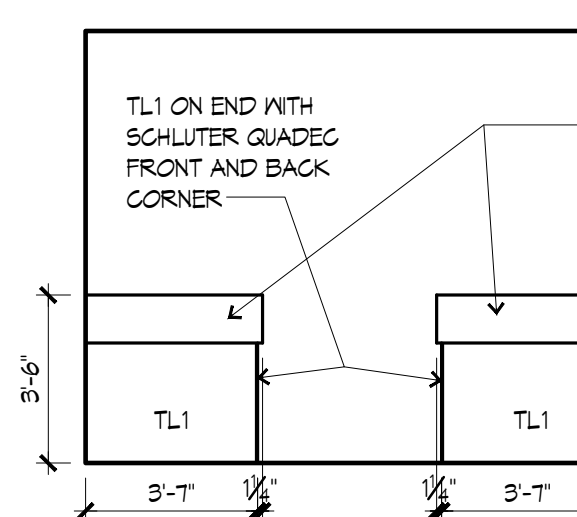
6 RECEPTION 136  
1/4"=1'-0"



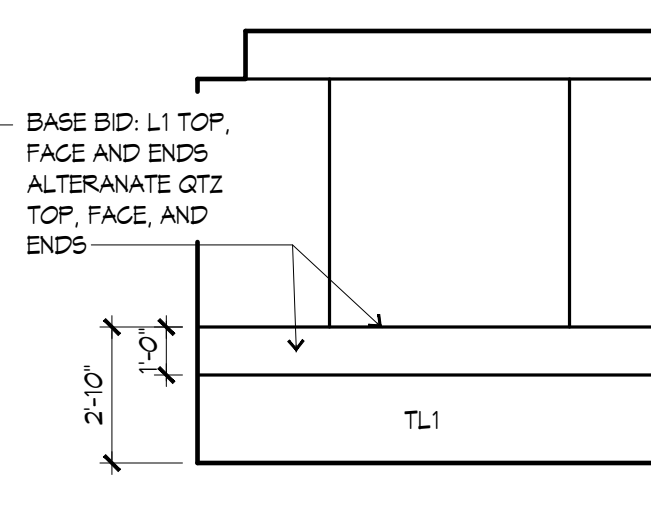
5 RECEPTION 136  
1/4"=1'-0"



4 RECEPTION 136  
1/4"=1'-0"



3 HALL 101  
1/4"=1'-0"

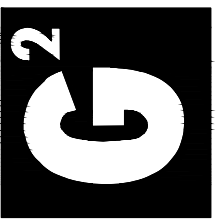


2 WAITING 100  
1/4"=1'-0"



12-23-2025

**GUY GRONBERG**  
ARCHITECTS, P.C.  
113 S. 21st St.  
Lee's Summit, MO 64063  
Phone: 816.524.0870  
Fax: 816.524.0570



**Bromley • Broyles • Luff**

680 SE Bayberry Ln Suite 105, Lee's Summit, MO 64063

This drawing has been prepared by the architect or instrumented engineer as indicated on the title block. It is to be used in accordance with the contract documents. The architect or instrumented engineer is not responsible for the accuracy of the information contained herein. The architect or instrumented engineer is not responsible for the accuracy of the information contained herein.

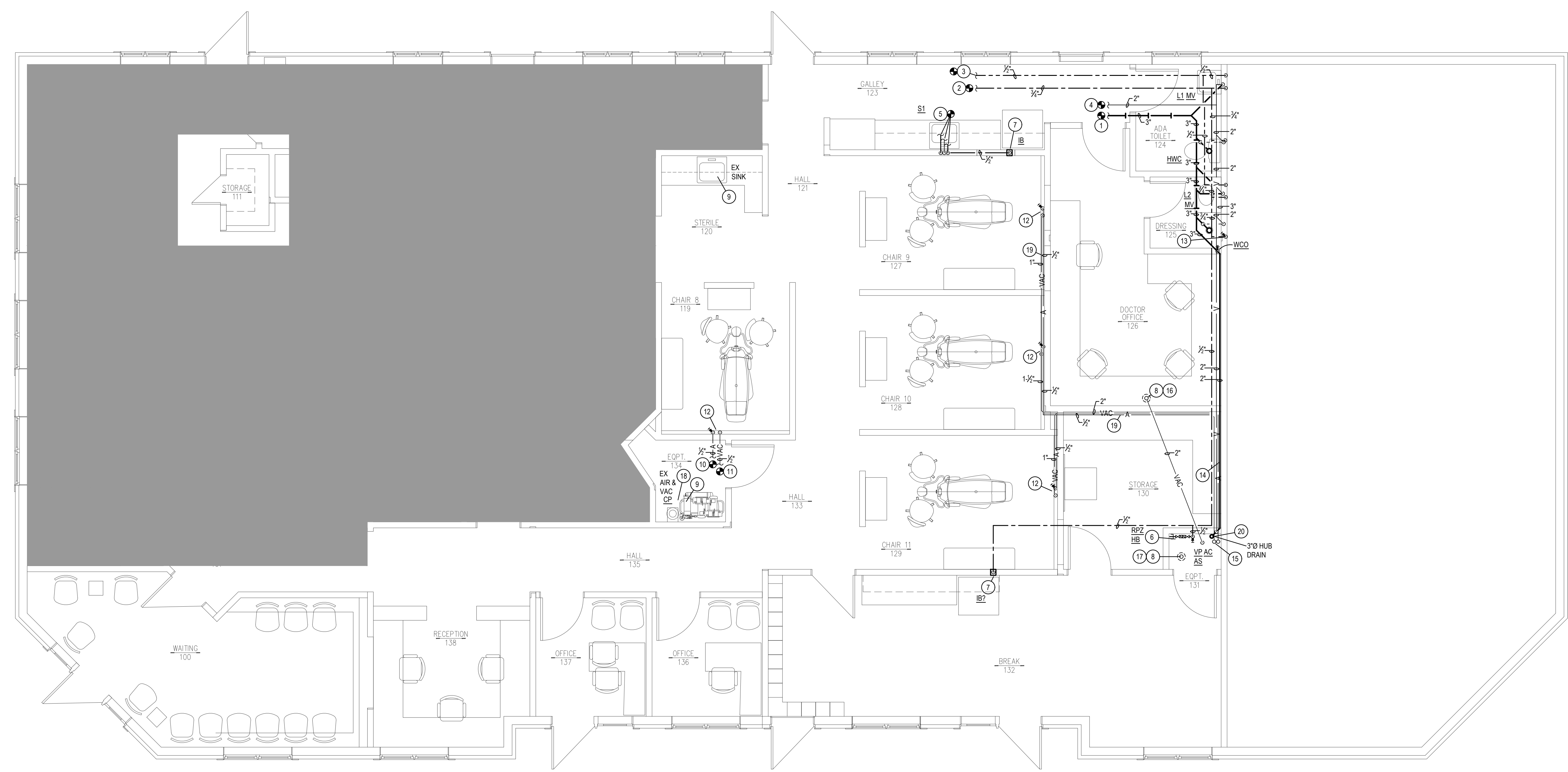
REV#	DATE	DESCRIPTION

Issue Date: 12-23-25  
Project #: 25022

CEILING PLAN

A4





**PLUMBING FLOOR PLAN**  
 NORTH SCALE: 1/4" = 1'-0"

- PLUMBING SYMBOLS**
- +—+— SOIL AND WASTE PIPING BELOW FLOOR/GRADE
  - +—+— SOIL AND WASTE PIPING ABOVE FLOOR/GRADE
  - v— SANITARY VENT PIPING ABOVE GRADE
  - v— SANITARY VENT PIPING BELOW GRADE
  - — — — — DOMESTIC COLD WATER PIPING
  - · — · — — DOMESTIC HOT WATER PIPING
  - · — · — — DOMESTIC HOT WATER RECIRCULATION PIPING
  - VAC — VACUUM PIPING ABOVE FLOOR
  - A — COMPRESSED AIR PIPING ABOVE FLOOR
  - > PIPING TURNING DOWN
  - < PIPING TURNING UP
  - +— TEE TOP CONNECTION
  - |— UNION
  - |X|X|X| BACKFLOW PREVENTER
  - WCO WALL CLEAN OUT
  - +— VALVE
  - +— CONNECT TO EXISTING

- PLUMBING GENERAL NOTES:**
1. INSTALL ALL PIPE, ETC. AS HIGH AS POSSIBLE.
  2. COORDINATE ALL WORK WITH OTHER TRADES AND EXISTING CONDITIONS AS REQUIRED TO PROPERLY INSTALL ALL SYSTEMS AS INTENDED, WITHIN THE CONFINES OF THE SPACES AVAILABLE, AND WITHOUT INTERFERENCES.
  3. REFER TO ARCHITECTURAL DRAWINGS FOR EXACT LOCATIONS AND MOUNTING HEIGHTS OF FIXTURES.
  4. REFER TO ARCHITECTURAL & STRUCTURAL DRAWINGS FOR REQUIREMENTS FOR SUPPORTING PIPING, EQUIPMENT, ETC. FROM THE STRUCTURE. PROVIDE ADDITIONAL STEEL AS REQUIRED TO PROPERLY SUPPORT SYSTEMS FROM THE STRUCTURE.
  5. SAWCUT EXISTING FLOOR AS REQUIRED FOR INSTALLATION OF UNDERFLOOR PIPING. PATCH FLOOR TO MATCH EXISTING.
  6. NO PIPING SHALL BE ROUTED OVER THE TOP OF ELECTRICAL PANELS.
  7. ALL MATERIALS WITHIN PLENUMS SHALL BE NONCOMBUSTIBLE OR SHALL HAVE A FLAME SPREAD INDEX OF NOT MORE THAN 25 AND A SMOKE-DEVELOPED INDEX OF NOT MORE THAN 50 WHEN TESTED IN ACCORDANCE WITH ASTM E 84.

- PLUMBING PLAN NOTES:**
1. CONNECT 3" WASTE TO EXISTING SANITARY SEWER AS REQUIRED. VERIFY EXACT LOCATION AND ELEVATION PRIOR TO INSTALLATION OF ANY PIPING.
  2. CONNECT 3/4" CW TO EXISTING DOMESTIC CW AS REQUIRED. VERIFY EXACT LOCATION PRIOR TO INSTALLATION OF ANY PIPING.
  3. CONNECT 1/2" HW TO EXISTING DOMESTIC HW AS REQUIRED. VERIFY EXACT LOCATION PRIOR TO INSTALLATION OF ANY PIPING.
  4. CONNECT 2" VENT TO EXISTING VENT AS REQUIRED. VERIFY EXACT LOCATION PRIOR TO INSTALLATION OF ANY PIPING.
  5. CONNECT 2" WASTE, 1-1/2" VENT, 1/2" CW AND 1/2" HW TO EXISTING SANITARY SEWER, VENT, CW AND HW IN WALL AS REQUIRED. VERIFY EXACT LOCATIONS AND WASTE ELEVATION PRIOR TO INSTALLATION OF ANY PIPING.
  6. PROVIDE 1/2" RPZ BACKFLOW PREVENTER FOR VACUUM PUMP WASH OUT HOSE AND INSTALL PER THE MANUFACTURER'S REQUIREMENTS. ROUTE DRAIN FROM RPZ BFP TO HUB DRAIN WITH AN AIR GAP.
  7. PROVIDE ICE MAKER BOX WITH VALVE FOR CONNECTION TO REFRIGERATOR BY OTHERS.
  8. CUT EXISTING ROOF AND FLASH INTO ROOF AS REQUIRED. ALL ROOFING WORK SHALL BE PERFORMED BY BUILDING OWNER'S ROOFING CONTRACTOR (AT THIS CONTRACTOR'S EXPENSE) TO MAINTAIN EXISTING ROOF WARRANTY. VERIFY APPROVED ROOFING CONTRACTOR WITH BUILDING OWNER PRIOR TO PERFORMING WORK.
  9. PLUMBING FIXTURE IS EXISTING TO REMAIN. NO WORK NEEDED.
  10. CONNECT COMPRESSED AIR TO EXISTING COMPRESSOR AIR MAIN AS REQUIRED. VERIFY EXACT LOCATION PRIOR TO INSTALLATION OF ANY PIPING.
  11. CONNECT VACUUM TO EXISTING DENTAL VACUUM MAIN AS REQUIRED. VERIFY EXACT LOCATION PRIOR TO INSTALLATION OF ANY PIPING.
  12. PROVIDE 1" VACUUM STUB AND 1/2" COMPRESSED AIR STUB WITH SHUT OFF VALVE IN WALL FOR CONNECTION BY OTHERS. VERIFY TERMINATION HEIGHT WITH OWNER AND GC PRIOR TO INSTALLATION.

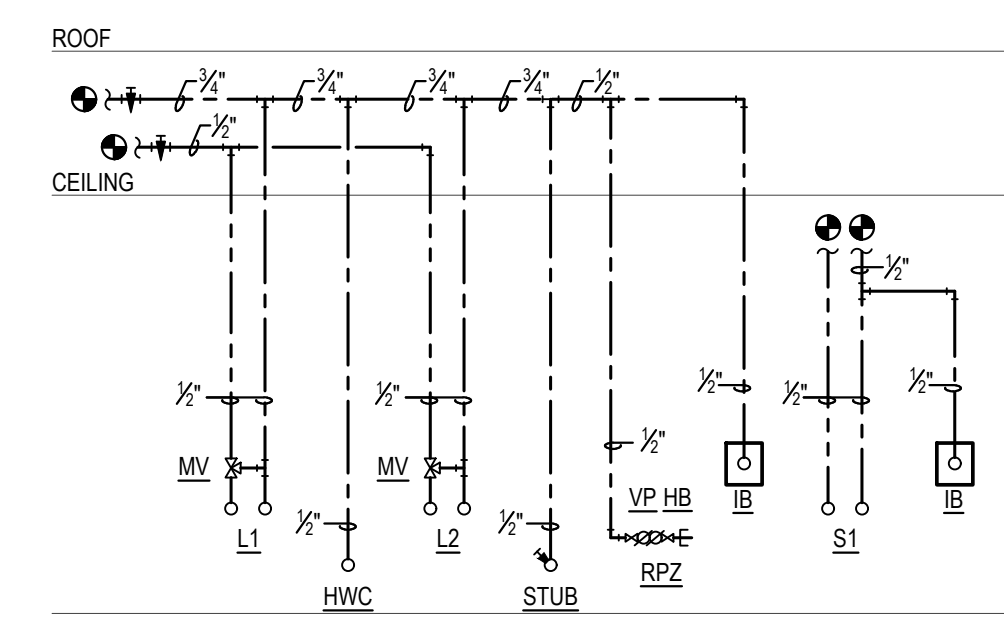
- PLUMBING PLAN NOTES:**
12. PROVIDE 1" VACUUM STUB AND 1/2" COMPRESSED AIR STUB WITH SHUT OFF VALVE IN WALL FOR CONNECTION BY OTHERS. VERIFY TERMINATION HEIGHT WITH OWNER AND GC PRIOR TO INSTALLATION.
  13. CAP 1/2" CW LINE WITH SHUT OFF VALVE IN WALL FOR FUTURE USE.
  14. ROUTE WASTE LINE ALONG BASE BOARD/WALL TO AVOID SAW CUTTING. SLOPE AT 1/4" PER FOOT FALL.
  15. VACUUM PUMP/AIR COMPRESSOR PROVIDED BY OWNER AND INSTALLED BY PLUMBER. PLUMBER TO CONNECT 1/2" COMPRESSED AIR PIPE TO AIR COMPRESSOR AS REQUIRED BY MANUFACTURER. CONNECT 2" VACUUM PIPE TO AMALGAM SEPARATOR AND VACUUM PUMP AS REQUIRED BY THE MANUFACTURER. RUN AIR AND VACUUM LINES IN BASEBOARDS AS SHOWN. PROVIDE PLATFORM FOR COMPRESSOR/VAC PUMP SO THAT CONDENSATE AND WASTE LINE CAN BE GRAVITY FED INTO HUB DRAIN WITH AIR GAP.
  16. ROUTE 2" METALLIC VACUUM PUMP EXHAUST VENT THROUGH ROOF AND TERMINATE PER THE MANUFACTURER'S REQUIREMENTS. ROUTE EXTERIOR TO BUILDING AS NEEDED TO MAINTAIN 10' CLEARANCE FROM OUTDOOR AIR INTAKES.
  17. ROUTE 2" METALLIC OUTSIDE AIR INTAKE FOR AIR COMPRESSOR UP THROUGH ROOF AND TERMINATE PER THE MANUFACTURER'S REQUIREMENTS.
  18. PROVIDE CONDENSATE PUMP AND DIRECT CONDENSATE PIPING FROM AIR COMPRESSOR TO IT. ROUTE AND CONDENSATE DISCHARGE TO EXISTING STANDPIPE AS REQUIRED.
  19. AIR AND VACUUM LINES ARE TO RUN IN BASEBOARDS AS SHOWN. SLOPE VACUUM MAIN TRUNK LINE TOWARDS THE VACUUM PUMP WITH A MINIMUM OF 1/4" FOR EVERY 10' OF HORIZONTAL RUN. USE 45 DEGREE ELBOWS.
  20. PROVIDE A HUB DRAIN TRAPPED ASSEMBLY FOR VACUUM PUMP AND COMPRESSOR AND RUN WASTE ALONG WALL ABOVE FLOOR BEFORE ROUTING TO WASTE LINE IN WALL AS SHOWN. COORDINATE WITH G.C. TO ELEVATE EQUIPMENT ON A PLATFORM AS REQUIRED OR PROVIDE CONDENSATE PUMP TO LIFT COMPRESSOR CONDENSATE INTO HUB DRAIN.

BC PROJECT #: 25889 LD/FS  
 MISSOURI PE COA #2009003629

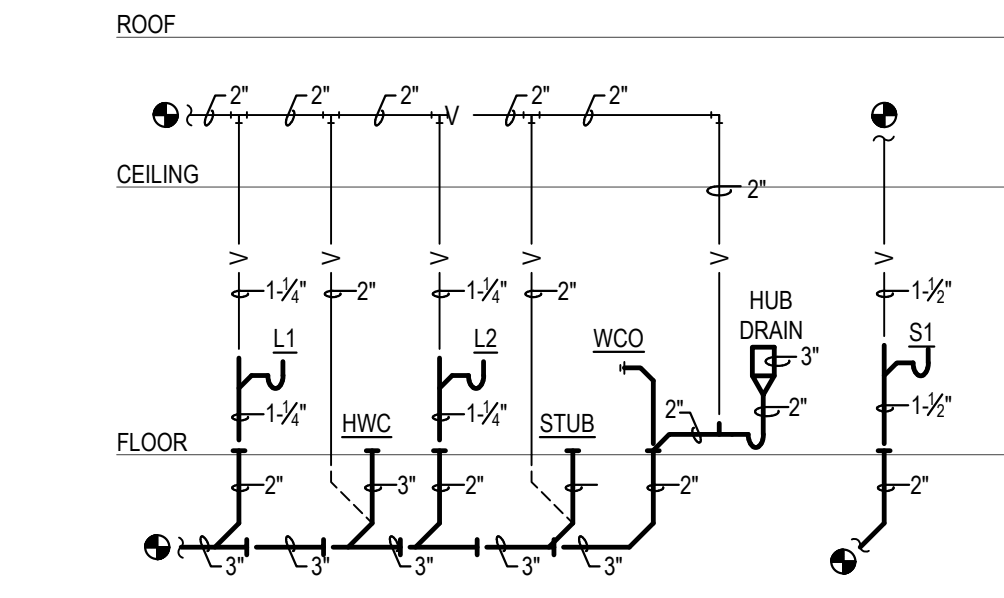
This drawing has been prepared by the Engineer, or under his supervision. This drawing is provided as an instrument of service by the Designer/Engineer and is intended for use on the project only. Pursuant to the Architecture/Works Copyright Protection Act of 1990, all drawings, specifications, notes and designs, including the overall form, arrangement and composition of these documents appearing herein, constitute the original, copyrighted work of the Designer/Engineer. Any reproduction, use or disclosure of information contained herein without prior written consent of the Engineer is strictly prohibited. © 2005 BC Engineers, Inc.

REV#	DATE	DESCRIPTION

Issue Date: 12-23-25  
 Project #: 25022



HOT & COLD WATER



WASTE & VENT

**PLUMBING RISER DIAGRAMS**

SCALE: NONE

**PLUMBING FIXTURE SCHEDULE:**

<b>HWC</b>	HANDICAP WATER CLOSET: TOTO, #CST744SL, "DRAKE CLOSE COUPLED TOILET", 1.6 GALLON FLUSH, 16-1/2" HIGH ELONGATED BOWL, FLOOR MOUNTED, FLOOR OUTLET, TANK TYPE, VITREOUS CHINA, SIPHON-JET ACTION, #SC534 OPEN FRONT SEAT WITH CHECK HINGE AND LESS COVER, CHROME PLATED ANGLE STOP AND RISER, HANDLE ON WIDE SIDE OF FIXTURE.
<b>L1</b>	HANDICAP LAVATORY, WALL HUNG: TOTO #LT307, 20" x 18", VITREOUS CHINA, FRONT OVERFLOW, DELTA #501 FAUCET WITH SINGLE METAL LEVER HANDLE, OFFSET GRID ELBOW DRAIN AND 1-1/4" TAILPIECE, CHROME PLATED CAST BRASS P-TRAP WITH CLEANOUT (MOUNTED PARALLEL WITH WALL), CHROME PLATED LOOSE KEY ANGLE STOPS AND RISERS, FLOOR MOUNTED CONCEALED ARM LAVATORY SUPPORT, INSULATE EXPOSED DRAIN, WATER SUPPLIES, AND VALVES WITH PROWRAP SEAMLESS MOLDED CLOSED CELL VINYL INSULATION.
<b>L2</b>	LAVATORY, COUNTERTOP: KOHLER #K-2196, VITREOUS CHINA, 20-1/4" x 17-1/2" OVAL BASIN, DELTA #501 FAUCET WITH SINGLE METAL LEVER HANDLE, GRID DRAIN WITH 1-1/4" TAILPIECE, CHROME PLATED P-TRAP, CHROME PLATED ANGLE STOPS AND RISERS.
<b>S1</b>	SINK: ELKAY, #LRAD-2222, 19" x 16" x 6-1/2" DEEP BOWL, 21-3/8" x 21-3/8" CUT-OUT, ADA COMPLIANT, SINGLE COMPARTMENT, SELF-RIMMING STAINLESS STEEL SINK WITH SATIN FINISH AND SOUND DAMPENING UNDERCOATING, #LK-1000CR FAUCET, SWING SPOUT, AERATOR, SINGLE LEVER HANDLE, CHROME PLATED CAST BRASS P-TRAP WITH CLEANOUT, CHROME PLATED ANGLE STOPS AND RISERS, IN-SINK-ERATOR #BADGER 5 DISPOSAL, 1/2 HP, 120 VOLT.
<b>HB</b>	HOSE BIBB: WOODFORD, #24, 1/2" HOSE NOZZLE OUTLET, BRASS FINISH, HANDWHEEL OPERATED, INTEGRAL VACUUM BREAKER.
<b>FS</b>	FLOOR SINK: JR SMITH, #3161, CAST IRON RECEPTOR, A.R.E. INTERIOR, 12" x 12" NICKEL BRONZE STRAINER, SEDIMENT BUCKET.
<b>MV</b>	MIXING VALVE: WATTS, #FUSG-B, THERMOSTATIC CONTROLLED MIXING VALVE. LEAD FREE BRONZE BODY, LOCKED TEMPERATURE ADJUSTMENT CAP (VANDAL RESISTANT), COPPER ENCAPSULATED THERMOSTAT ASSEMBLY WITH BRASS SHUTTLE, STAINLESSSTEEL SPRINGS, INTEGRAL CHECK VALVES ON HOT AND COLD INLETS. (SET TO 110°F), ASSE 1070 LISTED.
<b>RPZ</b>	REDUCED ZONE PRESSURE BACKFLOW PREVENTOR: WATTS #LF009, LEAD FREE BRONZE BODY CONSTRUCTION, TWO, IN-LINE INDEPENDENT CHECK VALVES, REPLACEABLE CHECK SEATS WITH AN INTERMEDIATE RELIEF VALVE, AND BALL VALVE TEST COCKS. USC APPROVED.
<b>IB</b>	ICE BOX: GUY GRAY #AB-9700, ICE BOX WITH 1/2" CONNECTION AND 1/4-TURN SHUT OFF VALVE.
<b>CP</b>	CONDENSATE PUMP: LITTLE GIANT VOMA 15UL, 115V CONDENSATE PUMP WITH DISCHARGE TUBING.
<b>FCOWCO</b>	VINYL TILE FLOOR: JR SMITH #4140, OR EQUAL. QUARRY TILE FLOOR: JR SMITH #4200, OR EQUAL. CARPETED FLOOR: JR SMITH #4020-Y, OR EQUAL. UNFINISHED FLOOR: JR SMITH #4020, OR EQUAL. WALL: JR SMITH #4472, OR EQUAL, 24" ABOVE THE FLOOR.

**PLUMBING FIXTURE BRANCH PIPING SCHEDULE**

FIXTURE	WASTE	VENT	CW	HW
WATER CLOSET (TANK TYPE)	3"	2"	1/2"	--
LAVATORY	1-1/4"	1-1/4"	1/2"	1/2"
SINK	1-1/2"	1-1/2"	1/2"	1/2"
FLOOR SINK	3"	2"	--	--
VACUUM PUMP	1-1/2"	1-1/2"	1/2"	--

NOTE: INDIVIDUAL VENTS FOR FIXTURES ON PLANS AND RISER DIAGRAM HAVE BEEN INCREASED WHERE HORIZONTAL VENT LENGTH IS IN EXCESS OF THE MAXIMUM DISTANCE INDICATED BY THE CODE.

**PLUMBING DRAINAGE CALCULATIONS**

FIXTURE	QUANTITY	FU	TOTAL FU
WATER CLOSETS	1	4	4
FUTURE FIXTURE	1	4	4
LAVATORIES	2	1	2
SINKS	1	2	2
FLOOR SINK	1	2	2
<b>TOTAL</b>			<b>14 FU</b>

VENT MAINS - 2"  
 WASTE MAIN - 3"

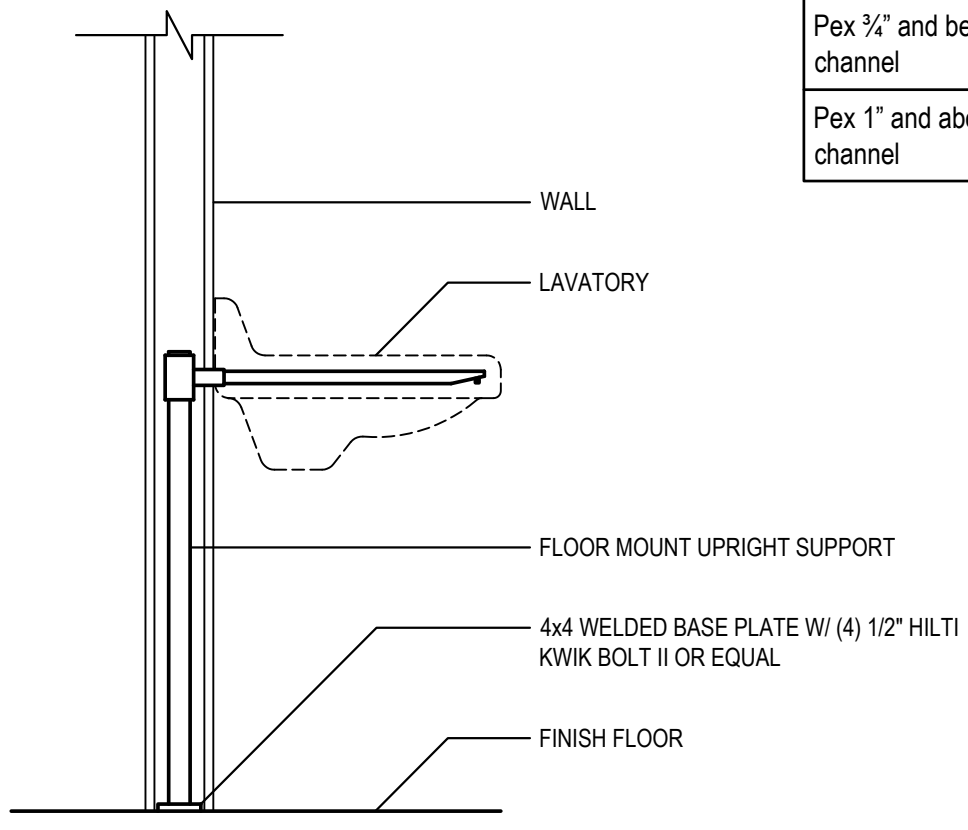
**PLUMBING FIXTURE WATER COUNT**

FIXTURE	QUANTITY	CW FU	HW FU	COMBINED FU	COMBINED TOTAL FU
WATER CLOSETS	1	5	0	5	5
FUTURE STUB	1	5	0	5	5
LAVATORIES	2	1.5	1.5	3	4
SINKS	1	2.25	2.25	2.25	3
ICE BOX	2	0.5	1	0.5	1
VACUUM PUMP HOSE BIB	1	1	0	1	1
<b>TOTAL</b>		<b>17.25 FU</b>	<b>5.25 FU</b>		<b>19 FU</b>

COLD WATER MAIN - 3/4"  
 HOT WATER MAIN - 1/2"

**PIPE HANGER SCHEDULE**

PIPE MATERIAL	MAXIMUM HANGER SPACING	HANGER ROD DIAMETER
ABS (All sizes)	4'	3/8"
PVC (All Sizes)	4'	3/8"
CPVC, 1 inch and smaller	3'	1/2"
CPVC, 1-1/4 inches and larger	4'	1/2"
Cast Iron (All Sizes)	5'	5/8"
Cast Iron (All Sizes) with 10 foot length of pipe	10'	5/8"
Copper Tube, 1-1/4 inches and smaller	6'	1/2"
Copper Tube, 1-1/2 inches and larger	10'	1/2"
Steel, 3 inches and smaller	12'	1/2"
Steel, 4 inches and larger	12'	5/8"
Pex, 1" and below without support channel	32'	3/8"
Pex, 1-1/4" and above without support channel	48'	3/8"
Pex 3/4" and below with support channel	6'	3/8"
Pex 1" and above with support channel	8'	3/8"



**LAVATORY SUPPORT DETAIL**

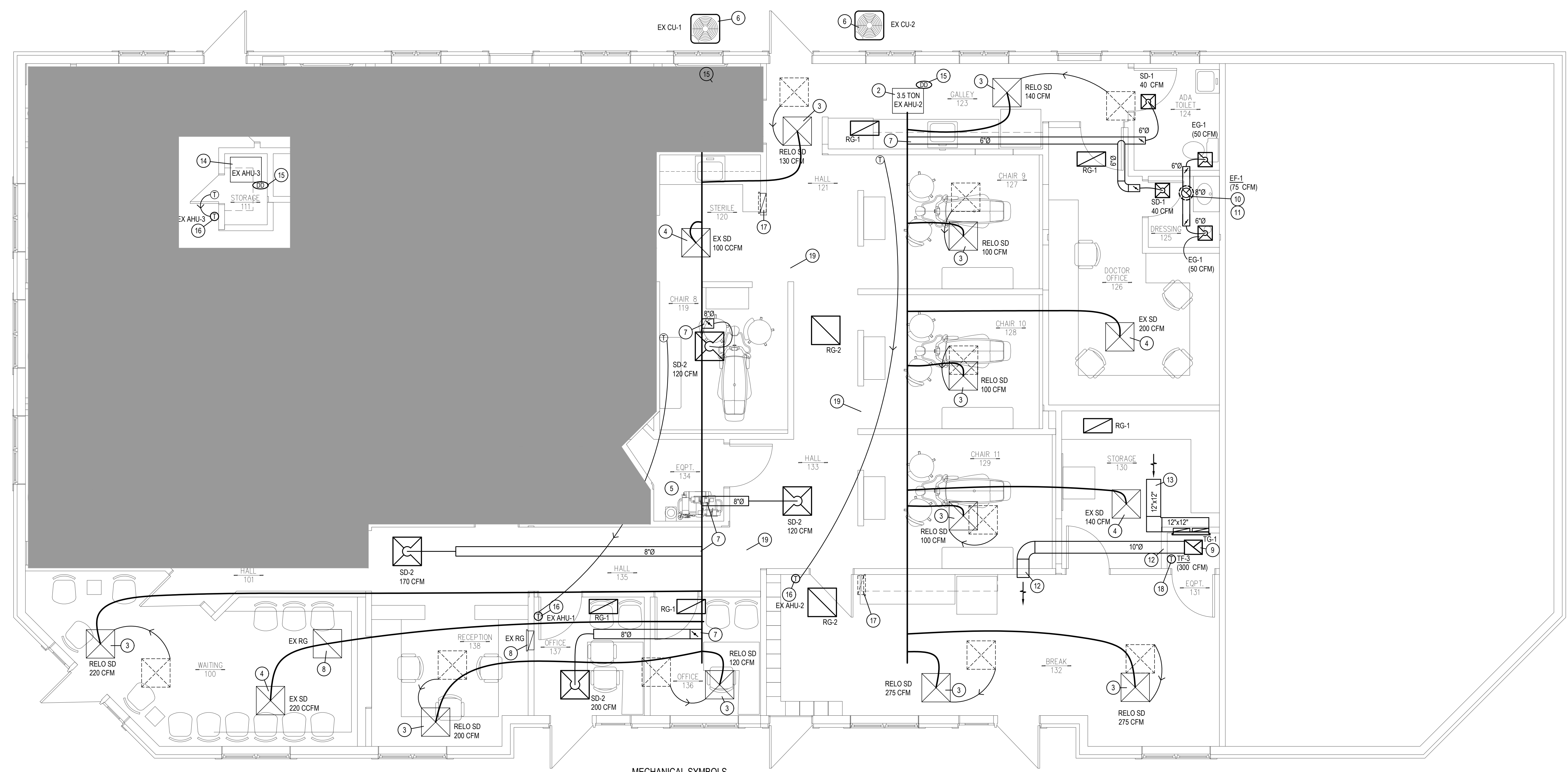
SCALE: NONE

BC PROJECT #: 25889 LD/FS  
 MISSOURI PE COA #2009003629

This drawing has been prepared by the Engineer, or under his supervision. This drawing is provided as an instrument of service by the Designer/Engineer and is intended for use on the project only. Pursuant to the Architecture/Engineers Copyright Protection Act of 1992, all drawings, specifications, ideas and designs, including the overall form, arrangement and composition of plans and elements appearing hereon, constitute the original, copyrighted work of the Designer/Engineer. Any reproduction, use, or disclosure of information contained herein without prior written consent of the Engineer is strictly prohibited. © 2005 BC Engineers, Inc.

REV#	DATE	DESCRIPTION

Issue Date: 12-23-25  
 Project #: 25022



**MECHANICAL FLOOR PLAN**  
 SCALE: 1/4" = 1'-0"

- MECHANICAL GENERAL NOTES:**
- COORDINATE ALL WORK WITH OTHER TRADES AND EXISTING CONDITIONS AS REQUIRED TO PROPERLY INSTALL ALL SYSTEMS AS INTENDED, WITHIN THE CONFINES OF THE SPACES AVAILABLE, AND WITHOUT INTERFERENCES.
  - THIS CONTRACTOR SHALL PERFORM ALL WORK INDICATED AND/OR AS REQUIRED FOR THE PROPER INSTALLATION AND OPERATION OF THE MECHANICAL SYSTEMS.
  - REFER TO ARCHITECTURAL REFLECTED CEILING PLANS FOR EXACT LOCATIONS OF DIFFUSERS.
  - INSTALL ALL DUCT, PIPE, ETC. AS HIGH AS POSSIBLE.
  - DUCT SIZES SHOWN ARE ACTUAL SHEET METAL SIZES AND INCLUDE AN ALLOWANCE FOR DUCT LINER WHERE APPLICABLE.
  - PROVIDE FLEXIBLE CONNECTION BETWEEN DUCTWORK AND EXHAUST FANS, AND OTHER MOTORIZED EQUIPMENT.
  - NO DUCT SHALL BE ROUTED OVER THE TOP OF ELECTRICAL PANELS.
  - ALL MATERIALS WITHIN PLENUMS SHALL BE NONCOMBUSTIBLE OR SHALL HAVE A FLAME SPREAD INDEX OF NOT MORE THAN 25 AND A SMOKE-DEVELOPED INDEX OF NOT MORE THAN 50 WHEN TESTED IN ACCORDANCE WITH ASTM E 84.
  - ALL MECHANICAL SYSTEMS SHALL BE BALANCED BY A CERTIFIED BALANCING CONTRACTOR. REFER TO SPECIFICATIONS FOR DETAILS.

**MECHANICAL SYMBOLS**

	NEW SUPPLY DIFFUSER
	NEW RETURN AIR GRILLE
	EXHAUST GRILLE/FAN
	THERMOSTAT, MOUNTED AT 48" AFF
	NEW DUCTWORK
	32"x14" SIZE OF RECTANGULAR DUCT
	6"Ø SIZE OF ROUND DUCT
	FLEXIBLE DUCTWORK
	FLEXIBLE CONNECTION TO FAN
	FLOOR PLAN NOTE DESIGNATION
	S.A. SUPPLY AIR
	R.A. RETURN AIR
	EXH. EXHAUST AIR
	MANUAL VOLUME DAMPER
	SUPPLY AIR DUCT UP/DOWN
	RETURN AIR DUCT UP/DOWN
	EXHAUST AIR DUCT UP/DOWN
	SCHEDULED MECHANICAL EQUIPMENT
	EXIST'G DUCT TO REMAIN
	EXIST'G DUCT TO BE REMOVED
	EXISTING FLEXIBLE DUCTWORK
	32"x14" SIZE OF EXISTING DUCT
	EXISTING SUPPLY DIFFUSER

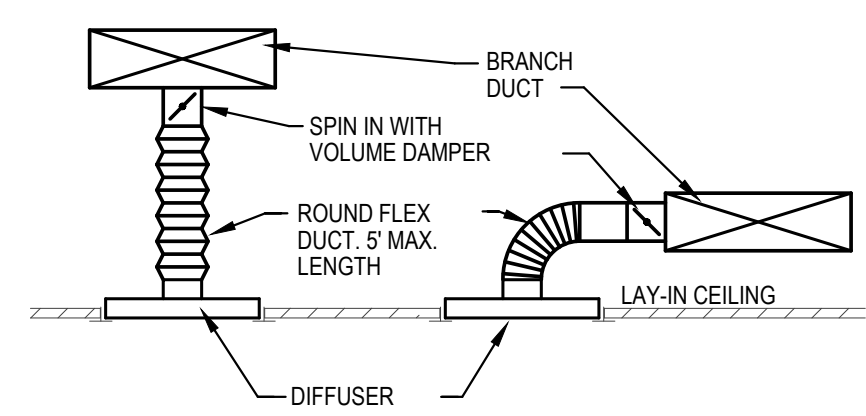
- MECHANICAL PLAN NOTES:**
- EXISTING AHU-1 IS EXISTING TO REMAIN. SET SUPPLY TO 1,600 CFM AND OUT DOOR AIR TO 105 CFM. PERFORM PREVENTATIVE MAINTENANCE CHECK-UP. SEE SHEET M2.
  - EXISTING AHU-2 IS EXISTING TO REMAIN. SET SUPPLY TO 1,200 CFM AND OUT DOOR AIR TO 165 CFM. PERFORM PREVENTATIVE MAINTENANCE CHECK-UP. SEE SHEET M2.
  - RELOCATE EXISTING SUPPLY DIFFUSER TO LOCATION SHOWN. ADJUST AND EXTEND DUCT WORK AS REQUIRED. CLEAN DIFFUSER TO LOOK LIKE NEW AND SET TO CFM INDICATED ON PLAN.
  - EXISTING SUPPLY DIFFUSER IS EXISTING TO REMAIN. CLEAN TO MAKE LOOK LIKE NEW AND SET TO CFM INDICATED ON PLAN.
  - SPACE IS EXISTING TO REMAIN. NO MECHANICAL WORK NEEDED.
  - EXISTING CONDENSING UNIT IS EXISTING TO REMAIN. CONTRACTOR TO PERFORM PREVENTATIVE MAINTENANCE CHECK-UP. SEE SHEET M2.
  - CONNECT DUCT TO EXISTING DUCT AS REQUIRED.
  - EXISTING RETURN GRILLE IS EXISTING TO REMAIN. CLEAN TO MAKE LOOK LIKE NEW.
  - SUPPORT FAN FROM STRUCTURE AS REQUIRED BY THE MANUFACTURER.
  - SUPPORT ROOF EXHAUST FAN AS REQUIRED BY THE MANUFACTURER. MAINTAIN 10'-0" CLEARANCE FROM ALL OUTDOOR AIR INTAKES.
  - CUT EXISTING ROOF AND FLASH INTO ROOF AS REQUIRED. ALL ROOFING WORK SHALL BE PERFORMED BY BUILDING OWNER'S ROOFING CONTRACTOR (AT THIS CONTRACTOR'S EXPENSE) TO MAINTAIN EXISTING ROOF WARRANTY. VERIFY APPROVED ROOFING CONTRACTOR WITH BUILDING OWNER PRIOR TO PERFORMING WORK. SEAL PENETRATIONS WEATHERTIGHT.
  - THERMAL TRANSFER DUCT SHALL BE ROUTED TO RETURN AIR PLENUM AS SHOWN. SEAL WALL PENETRATIONS TO MAINTAIN SOUND RATING.
  - THERMAL TRANSFER AIR GRILLE - GRILLE LOCATED AT 12" AFF IN EQUIPMENT ROOM. ADD SHEET METAL DUCT INSIDE WALL IF WOOD STUD CONSTRUCTION. PROVIDE TRANSFER AIR SOUND BOOT AS DETAILED FROM PLENUM SPACE TO EQUIPMENT ROOM. SEAL ANY GAPS TO MAINTAIN SOUND RATING.
  - EX AHU-3 IS EXISTING TO REMAIN. NO WORK NEEDED.
  - VERIFY EXISTENCE OF WORKING DUCT MOUNTED SMOKE DETECTOR. IF NONE FOUND, PROVIDE REMOTE ENUNCIATOR AUDIOVISUAL. VERIFY LOCATION WITH FIRE MARSHAL PRIOR TO INSTALLATION.
  - RELOCATE EXISTING THERMOSTAT SENSOR TO LOCATION SHOWN. MOUNT 48" A.F.F.
  - DEMOLISH EXISTING RETURN GRILLE AND ALL ASSOCIATED DUCT WORK.
  - PROVIDE THERMOSTAT IN LOCATION SHOWN. MOUNT AT 48" AFF. THERMOSTAT SHALL BE COOL ONLY SET TO 80°F. COORDINATE WITH ELECTRICAL SO THAT THERMOSTAT ENERGIZES EXHAUST FAN WHEN THE TEMPERATURE EXCEEDS THE SETPOINT.
  - PROVIDE OPENINGS IN EXISTING HALL WALLS DIVIDING THE EXISTING PLENUM SPACES BETWEEN AIR HANDLERS INTO ONE OPEN AIR PLENUM. INTENTION IS FOR ALL 3 AIR HANDLERS IN THIS SPACE TO COMMUNICATE.

BC PROJECT #: 25889 LD/FS  
 MISSOURI PE COA #2009003629

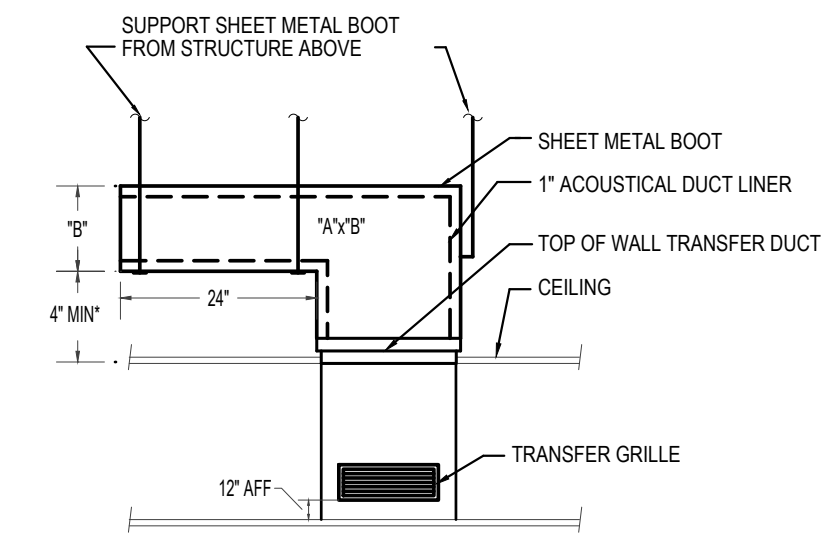
**BC ENGINEERS INCORPORATED**  
 5720 Reeder Shawnee, KS 66203 (913)262-1772

REV#	DATE	DESCRIPTION

Issue Date: 12-23-25  
 Project #: 25022



**DIFFUSER DETAIL**  
 SCALE: NONE



\* MAY VARY AS REQUIRED FOR CLEARANCE WITH LIGHT FIXTURES, ETC.  
**TA SOUND BOOT DETAIL**  
 NO SCALE

**OUTDOOR AIR CALCULATIONS**

UNIT	Area (sqft)	OCCUPANCY CLASSIFICATION	Occupant Density #/1000 sqft	People outdoor airflow rate in breathing zone, (Rp) cfm/person	Area outdoor airflow rate in breathing zone, (Ra) cfm/sqft	Exhaust airflow rate cfm/sqft	Breathing zone outdoor airflow (Vbz)	Zone air distribution effectiveness (Ez)	Zone outdoor airflow (cfm)
EX AHU-1	381	Office spaces	5	5	0.06		32	0.8	40
	220	Main entry lobbies	10	5	0.06		24	0.8	30
	418	Corridors	0	0	0.06		25	0.8	31
<b>Total</b>									102
EX AHU-2	540	Office spaces	5	5	0.06		46	0.8	57
	465	Break Room	25	5	0.06		86	0.8	108
	70	Toilet rooms public	0	0	0	50%	0	0.8	0
	123	Storage rooms	0	0	0.12		15	0.8	18
<b>Total</b>									183

**DIFFUSER SCHEDULE**

MARK	MFGR	MODEL	BORDER TYPE	NECK SIZE	FACE SIZE	FINISH	DAMPER	ACCESSORIES	NOTES
SD-1	TITUS	TMS	3	6"Ø	12"x12"	WHITE	-	-	-
SD-2		TMS		8"Ø	24"x24"		-	-	-
EG-1		PAR		6"Ø	12"x12"		OPPOSED BLADE	TRM KIT	-
RG-1				10"x22"	12"x24"		-	-	-
RG-2				22"x22"	24"x24"		-	-	-
TG-1		350RL	1	30"x12"	--		-	-	1

NOTES: 1. SEE TA SOUND BOOT DETAIL FOR CLARITY.

**EXHAUST FAN SCHEDULE**

MARK	MFGR	MODEL	CFM	EXTERNAL STATIC P. IN. WG.	RPM	ELECTRICAL		FAN TYPE	CONTROLS	NOTES
						VOLT/Ø/HZ	PWR			
EF-1	COOK	70C15DH	100	0.284	1,700	120/1/60	79 W	ROOF EXH.	TIME CLOCK	1
TF-2	COOK	GC-542	300	0.2	1,600	120/1/60	100 W	CEILING EXH.	THERMOSTAT	2, 3

NOTES: 1. PROVIDE INSULATED 8" HIGH (AT LOWEST POINT) PREFABRICATED ROOF CURB, DISCONNECT SWITCH, BACKDRAFT DAMPER, BIRD SCREEN, UNIT MOUNTED VARIABLE SPEED CONTROLLER.  
 2. PROVIDE CEILING GRILLE, INTEGRAL BACK DRAFT DAMPER, VARI-SPEED CONTROLLER (NEAR FAN AND ABOVE CEILING) AND FACTORY MEANS OF DISCONNECT.  
 3. PROVIDE LINE VOLTAGE COOLING ONLY THERMOSTAT FOR CONTROL OF FAN. SET TO 80°F.

- ALL EXISTING HVAC UNITS SHOULD HAVE A PREVENTATIVE MAINTENANCE CHECK-UP TO INCLUDE THE FOLLOWING CRITERIA
- CHANGE ALL FILTERS.
  - CLEAN ALL CONDENSATE DRAIN PANS AND FLUSH ALL CONDENSATE DRAIN LINES.
  - CLEAN ALL EVAPORATOR AND CONDENSER COILS WITH A NON-ACID CLEANER.
  - CHECK REFRIGERANT CHARGE (GAUGES OR RETURNS/SUPPLY TEMPERATURE VARIANCE).
  - PROVIDE COMPLETE LUBRICATION OF ALL SHAFTS AND BEARINGS THAT HAVE LUBRICATION ZERKS.
  - THE REPLACEMENT OF ALL BELTS, HOSES AND FABRIC/RUBBER COATED ITEMS THAT ARE SUBJECT TO WEAR.
  - CHECK AMPS OF THE INDOOR, OUTDOOR MOTORS, AND COMPRESSORS
  - TURN UNIT POWER OFF - TIGHTEN ALL ELECTRICAL CONNECTIONS, CONTRACTORS, ETC.
  - EXAMINE AND REPAIR ALL ELECTRICAL WIRING, CONTROLS, STARTERS, RELAYS, CAPACITORS AND LIKE ITEMS THAT TEND TO DETERIORATE OVER TIME OR BECOME NON-OPERATIONAL. THIS INCLUDES SMOKE DETECTORS.
  - GREASE ALL FITTINGS
  - CHECK DUCTWORK CONNECTIONS AND REPAIR AS NEEDED.
  - NOTIFY GENERAL CONTRACTOR OF ANY REQUIRED PARTS OR REPAIRS NOT INCLUDED IN THIS LIST. ALL UNITS SHALL BE FUNCTIONING AND COOLING PROPERLY AT COMPLETION OF JOB.
  - VERIFY ANY WORK REQUIRED BY THE LANDLORD PRIOR TO BID.
  - ALL FINDINGS AND VALUES TO BE NOTED AND PROVIDED TO TENANT'S CONSTRUCTION MANAGER & OR TENANT'S MAINTENANCE DIRECTOR.

BC PROJECT #: 25889 LD/FS  
 MISSOURI PE COA #2009003629

This drawing has been prepared by the Engineer, or under his supervision. This drawing is provided as an instrument of service by the Designer/Engineer and is intended for use on the project only. Pursuant to the Architecture/Works Copyright Protection Act of 1990, all drawings, specifications, ideas and designs, including the overall form, arrangement and composition of plans and elements appearing hereon, constitute the original, copyrighted work of the Designer/Engineer. Any reproduction, use, or disclosure of information contained herein without prior written consent of the Engineer is strictly prohibited. © 2005 BC Engineers, Inc.

REV#	DATE	DESCRIPTION

Issue Date: 12-23-25  
 Project #: 25022



**GUY GRONBERG ARCHITECTS, P.C.**  
 113 55 3rd St.  
 Lee's Summit, MO 64063  
 Phone: 816-524-0219  
 Fax: 816-524-0219

**BC ENGINEERS INCORPORATED**  
 5720 Reeder Shawnee, KS 66203 (913)262-1772

**Bromley • Broyles • Luff**  
 680 SE Bayberry Ln Suite 103, Lee's Summit, MO 64063

**ELECTRICAL SPECIFICATIONS**

1. GENERAL PROVISIONS:
  - A. PROVIDE ALL LABOR, MATERIALS, EQUIPMENT, NECESSARY FOR THE COMPLETE INSTALLATION OF THE ELECTRICAL SYSTEMS OUTLINED.
  - B. OBTAIN ALL PERMITS, FEES, LICENSES, INSPECTIONS, AND CERTIFICATES OF COMPLIANCE OR APPROVAL AS REQUIRED BY THE AUTHORITIES.
  - C. ALL WORK SHALL BE PERFORMED IN ACCORDANCE WITH THE LATEST APPROVED EDITION OF THE NATIONAL ELECTRIC CODE (NEC) AND ALL APPLICABLE LAWS, CODES AND REGULATIONS OF THE GOVERNMENTAL BODIES HAVING JURISDICTION OVER THE SITE.
  - D. ALL TESTING REQUIRED BY AUTHORITIES SHALL BE CONSIDERED PART OF THIS WORK.
  - E. DURING CONSTRUCTION, ALL FIXTURES, EQUIPMENT, CONDUIT, ETC. SHALL BE COVERED, PLUGGED, OR CAPPED AS REQUIRED TO KEEP CLEAN AND UNDAMAGED. ALL DAMAGED ITEMS SHALL BE RESTORED TO ORIGINAL CONDITION OR REPLACED. ALL PROTECTIVE COVERINGS SHALL BE REMOVED BEFORE FINAL ACCEPTANCE.
  - F. PROVIDE ALL NECESSARY CUTTING AND PATCHING OF WALLS, FLOORS, CEILINGS, AND ROOFS AS NECESSARY. PATCH AROUND ALL OPENINGS SHALL MATCH ADJACENT AREA. COORDINATE ALL ROOFING WORK WITH OWNER OR RESPONSIBLE PARTY, SO THAT THE EXISTING ROOFING WARRANTY WILL BE MAINTAINED.
  - G. CONTRACTOR SHALL GUARANTEE ALL WORK AND MATERIALS AGAINST DEFECTS FOR A PERIOD OF ONE YEAR FROM FINAL ACCEPTANCE.
  - H. CONTRACTOR SHALL PROVIDE ACCESS PANELS WHERE NECESSARY FOR CONCEALED ELECTRICAL COMPONENTS.
2. OPERATION AND MAINTENANCE MANUALS:
  - A. DURING THE COURSE OF CONSTRUCTION, COLLECT AND COMPILE OPERATING INSTRUCTIONS, WIRING DIAGRAMS, CATALOG CUTS, LUBRICATION AND PREVENTIVE MAINTENANCE INSTRUCTIONS, PARTS LISTS, ETC. FOR ALL EQUIPMENT FURNISHED UNDER THIS CONTRACT.
  - B. ALL LITERATURE AND INSTRUCTIONS SHIPPED WITH THE EQUIPMENT SHALL BE SAVED FOR INCLUSION IN THE OPERATION AND MAINTENANCE MANUALS.
  - C. ALL LITERATURE LISTED ABOVE AND ALL PAPERS LISTING WARRANTIES, ETC. SHALL BE COLLATED AND LABELED WITH THE PROJECT NAME, ADDRESS, ARCHITECT, ENGINEER, CONTRACTORS, ETC. DOCUMENTS SHALL BE COMPILED AND BOUND IN DIGITAL FILE OR 3 RING BINDER.
3. MANUFACTURERS:
  - A. MANUFACTURERS, MODEL NUMBERS, ETC. INDICATED OR SCHEDULED ON THE DRAWINGS SHALL BE INTERPRETED AS HAVING ESTABLISHED A STANDARD OF QUALITY AND SHALL NOT BE CONSIDERED AS LIMITING COMPETITION. ARTICLES, FIXTURES, ETC. OF EQUAL QUALITY BY MANUFACTURERS SHALL BE ACCEPTABLE. SUBJECT TO STRUCTURAL AND ELECTRICAL CONSTRAINTS OF THE PROJECT DESIGN, UNLESS NOTED OTHERWISE.
4. TESTING, AND BALANCING:
  - A. ALL CIRCUITS SHALL BE TESTED FOR CONTINUITY, SHORTS, AND GROUNDS BEFORE CONNECTING TO THE PROPER PHASE AS DESIGNED TO BALANCE THE LOADING BETWEEN PHASES.
  - B. POWER AND LIGHTING PANELS SHALL BE PROPERLY PHASED TO DISTRIBUTE THE LOAD AND SHALL BE CONNECTED AND ADJUSTED TO OPERATE AS SPECIFIED.
  - C. ALL MOTORS AND SIMILAR EQUIPMENT SHALL BE CHECKED FOR PROPER PHASE ROTATION AND OPERATION.
5. RACEWAYS:
  - A. CONDUIT INSIDE THE BUILDING SHALL BE METALLIC TUBING (EMT) BEARING THE UL LABEL, WITH COMPRESSION TYPE FITTINGS OR SCREW SET FITTINGS.
  - B. CONDUIT EXPOSED TO THE WEATHER, INSTALLED UNDERGROUND, IN CONCRETE, OR USED FOR SERVICE ENTRANCE SHALL BE STANDARD RIGID CONDUIT (GALVANIZED) WITH THREADED FITTINGS.
  - C. UNDERGROUND CONDUIT MAY BE POLYVINYL CHLORIDE WITH A DEFLECTION TEMPERATURE UNDER LOAD AT 264 FRS. OF 78 DEGREES C. AND A TENSILE STRENGTH OF 2,500 PSI. JOINTS SHALL BE FLUSH SOLVENT WELDED IN ACCORDANCE WITH THE MANUFACTURER'S INSTRUCTIONS. CONDUIT SHALL BE EQUAL TO CARLON POWER AND COMMUNICATIONS DUCT TYPE DB (DIRECT BURIAL). CONDUIT AND FITTINGS SHALL BE PROVIDED BY THE SAME MANUFACTURER.
  - D. FLEXIBLE METAL CONDUIT SHALL ONLY BE USED FOR CONNECTIONS TO MOTORS, TRANSFORMERS, AND LIGHT FIXTURES. MAXIMUM LENGTH SHALL BE 6'-0".
6. CONDUCTORS:
  - A. WIRES SHALL BE CONTINUOUS WITHOUT SPICES OR TIPS IN CONDUIT RUNS. ALL SPICES SHALL BE MADE IN JUNCTION PULL OR OUTLET BOXES. ALL WIRE SHALL BE INSTALLED IN CONDUIT, WIREWAYS, OR OTHER PROTECTIVE COVER SANCTIONED BY CODES.
  - B. CONDUCTORS FOR LIGHTING AND POWER SHALL BE COPPER, MINIMUM NO. 12 A.W.G., 600 VOLT.
  - C. NO. 10 GAUGE AND SMALLER CONDUCTORS SHALL BE TYPE THHN (WET LOCATIONS) OR THHN (DRY LOCATIONS), SOLID CONDUCTOR, UNLESS OTHERWISE INDICATED.
  - D. NO. 8 GAUGE AND LARGER CONDUCTORS SHALL BE TYPE THWN (WET LOCATIONS) OR THHN (DRY LOCATIONS), STRANDED, UNLESS OTHERWISE INDICATED.
  - E. SERVICE ENTRANCE AND PANEL FEEDER CONDUCTORS, NO. 3 GAUGE AND LARGER SHALL BE TYPE XHHW-2 (WET LOCATIONS) OR THHN (DRY LOCATIONS), STRANDED COPPER, UNLESS OTHERWISE INDICATED.
  - F. ALUMINUM SERVICE WIRE MAY BE USED FOR SERVICE ENTRANCE CONDUCTORS AND/OR PANEL FEEDERS ONLY. ALL OTHER WIRING SHALL BE COPPER CONDUCTORS AS HEREBEFORE SPECIFIED.
  - G. ALUMINUM CONDUCTORS SHALL BE TYPE XHHW-2, ALCAN, "STABLOY" TYPE ALLOY CONDUCTORS UTILIZING "AA-8030" ALUMINUM ALLOY. CONDUCTORS SHALL BE UL LISTED.
  - H. ALL ALUMINUM CONDUCTORS SHALL BE TERMINATED IN CONNECTIONS OR LUGS WHICH ARE DUAL RATED (AL/CU OR AL/SO) AND ARE LISTED BY UL FOR USE WITH ALUMINUM OR COPPER CONDUCTORS AND SHALL BE SIZED TO ACCEPT ALUMINUM CONDUCTORS OF THE AMPACITY SPECIFIED.
7. MC CABLE:
  - A. MC CABLE SHALL CONSIST OF INTERLOCK ARMORED CABLE MADE OF THREE OR FOUR TYPE THHN (SOLID WET AND LARGER MAY BE STRANDED) COPPER CONDUCTORS RATED BY UL FOR DRY LOCATIONS, WITH NYLON OR EQUIVALENT UL LISTED JACKET. PER UL STANDARD B3 THE THREE CONDUCTORS SHALL BE TIED TOGETHER WITH THE GROUNDING CONDUCTOR, SUITABLE FILLERS, AND WRAPPED IN BINDER TAPE. THE ASSEMBLY SHALL BE ARMORED WITH SPIRALLY WRAPPED INTERLOCKED ARMOR OF ALUMINUM OR GALVANIZED STEEL.
  - B. CABLES SHALL BE TESTED IN ACCORDANCE WITH UL STANDARD 1589 FOR TYPE MC CABLE AND RATED AT 600 VOLTS, 90 DEG. C FOR DRY LOCATIONS AND 75 DEG. C FOR WET LOCATIONS.
  - C. MC CABLE INSTALLED IN PATIENT CARE AREAS SHALL BE "HCF" TYPE WITH GREEN INSULATED COPPER GROUNDING CONDUCTOR, BARE ALUMINUM GROUNDING/BONDING CONDUCTOR AND INTERLOCKED GREEN ALUMINUM ARMOR LISTED FOR USE AS AN EQUIPMENT GROUNDING CONDUCTOR IN CONDUCTION WITH THE BARE ALUMINUM BONDING CONDUCTOR.
    - 1) CABLES SHALL MEET ALL NEC REQUIREMENTS FOR ARTICLE 517 AND SHALL BE UL LISTED FOR USE IN HEALTH CARE FACILITIES.
    - 2) HCF MCAP CABLE SHALL NOT BE USED IN HAZARDOUS ANESTHETIZING AREAS.
  - D. MC CABLE INSTALLED UNDERGROUND IN PATIENT CARE AREAS SHALL BE "HCF MCAP" TYPE PVC JACKETED ALL PURPOSE CABLE WITH GROUNDING CONDUCTOR, BARE ALUMINUM GROUNDING/BONDING CONDUCTOR AND INTERLOCKED GREEN ALUMINUM ARMOR LISTED FOR USE AS AN EQUIPMENT GROUNDING CONDUCTOR IN CONDUCTION WITH THE BARE ALUMINUM BONDING CONDUCTOR.
    - 1) CABLES SHALL MEET ALL NEC REQUIREMENTS FOR ARTICLE 517 AND SHALL BE UL LISTED FOR DIRECT BURIAL IN EARTH, EMBEDDED IN CONCRETE AND SUITABLE FOR WET LOCATIONS.
    - 2) HCF MCAP CABLE SHALL NOT BE USED IN HAZARDOUS ANESTHETIZING AREAS.
8. WIRING DEVICES:
  - A. WALL SWITCHES SHALL BE SPECIFICATION GRADE, QUIET TYPE, FLUSH TOGGLE SWITCH, RATED FOR 20 AMPS, WITH THERMOPLASTIC COVER PLATES.
    - 1) SINGLE POLE, HUBBELL #S1221-X, OR EQUAL.
    - 2) THREE-WAY, HUBBELL #S3233-X, OR EQUAL.
    - 3) AS SPECIFIED ON PLANS.
  - B. RECEPTACLES SHALL BE SPECIFICATION GRADE, DUPLEX, GROUNDING, THREE-WIRE TYPE, RATED FOR 20 AMPS, WITH THERMOPLASTIC COVER PLATES. HUBBELL #CR352-X, OR EQUAL.
  - C. GROUND FAULT INTERRUPTER RECEPTACLES (GFI) SHALL BE HUBBELL #GF20-XL. DEVICE COVER PLATES SHALL BE AS HEREBEFORE SPECIFIED.
  - D. ISOLATED GROUND RECEPTACLES (IG) SHALL BE HUBBELL #CR352G, ORANGE COLOR. DEVICE COVER PLATES SHALL BE AS HEREBEFORE SPECIFIED.
  - E. RECEPTACLES OUTSIDE BUILDING AND WHERE NOTED AS WEATHERPROOF, SHALL BE LISTED WEATHER-RESISTANT HUBBELL #E2TR3X OR EQUAL AND SHALL BE INSTALLED IN A WEATHERPROOF ENCLOSURE WHICH SHALL BE INTERMATIC #WP1010AMD OR #WP1010HXD DIECAST METAL WEATHERPROOF RECEPTACLE COVER. COVER SHALL BE WEATHER PROOF RATED WHILE IN USE.
  - F. VERIFY DEVICES AND DEVICE COVERPLATES COLOR AND STYLE WITH ARCHITECT.

**ELECTRICAL SPECIFICATIONS (CONTINUED)**

9. BOXES:
  - A. HOT DIPPED GALVANIZED STEEL BOXES. PROVIDE TYPE TO SUIT CONDITIONS FOR INSTALLATION.
  - B. ALL BOXES SHALL BE FLUSH MOUNTED, UNLESS INDICATED OTHERWISE.
10. PANELBOARDS:
  - A. PANELBOARDS ARE EXISTING AND SHALL BE REUSED. PROVIDE ADDITIONAL BREAKERS AS REQUIRED TO CONNECT CIRCUITS AS SHOWN ON THE DRAWINGS. ADDITIONAL BREAKERS SHALL BE THERMAL MAGNETIC, QUICK-BREAK BOX OR CIRCUIT BREAKERS WITH ONE HANDLE FOR SINGLE OR MULTIPLE RATINGS AND SHALL BE COMPATIBLE WITH EXISTING PANELS.
  - B. COMPLETE EXISTING DIRECTORY AS REQUIRED TO IDENTIFY NEW CIRCUIT, LISTING LOAD SERVED AND OTHER PERTINENT DATA.
11. DISCONNECTS:
  - A. DISCONNECTS SHALL BE EXTERNALLY OPERATED, QUICK-MAKE, QUICK-BREAK, SAFETY, WITH PROVISIONS FOR PAD LOCKING. FUSED AND NON-FUSED DISCONNECT SWITCHES SHALL BE PROVIDED AS INDICATED.
  - B. INDOOR SWITCHES SHALL BE NEMA 1 AND OUTDOOR SWITCHES SHALL BE NEMA 3R, UNLESS INDICATED OTHERWISE.
12. FUSES:
  - A. FUSES PROTECTING CIRCUIT BREAKER PANELS SHALL BE CURRENT LIMITING UL CLASS RK-1 FUSES WITH 200,000 AMPERES RMS SYM INTERRUPTING CAPACITY. FUSING ELEMENTS SHALL BE SILVER FOR RATINGS ABOVE 60 AMPERES.
  - B. ALL OTHER FUSES SHALL BE UL CLASS RK-4 DUAL-ELEMENT WITH A MINIMUM TIME-DELAY OF 10 SECONDS AT 500% RATING. FUSES SHALL HAVE CURRENT-LIMITING SHORT-CIRCUIT LINKS AND 200,000 AMPERES RMS SYM INTERRUPTING CAPACITY. FUSING ELEMENTS SHALL BE COPPER.
13. LIGHT FIXTURES:
  - A. WHERE LIGHT FIXTURES ARE MOUNTED IN A LAY-IN CEILING, PROVIDE A MINIMUM OF 2 SUPPORT WIRES ATTACHED DIRECTLY BETWEEN EACH LIGHT FIXTURE AND THE BUILDING STRUCTURE. SUPPORT WIRES SHALL BE A MINIMUM OF 12 GAUGE GALVANIZED STEEL WIRE, SOFT ANNEALED.
  - B. FIXTURES ARE REQUIRED AT ALL LIGHTING OUTLETS SHOWN ON THE DRAWINGS. APPROVED LIGHTING FIXTURE WIRE IS REQUIRED IN ALL FIXTURES AND FUTURE RACEWAYS. WEATHERPROOF WIRING IS REQUIRED FOR EXTERIOR FIXTURES. ALL PARTS OF FIXTURES AND WIRING SHALL BE IN ACCORDANCE WITH NEC REQUIREMENTS.
  - C. ALL FIXTURES SHALL CARRY UL AND ETL LABELS.
14. SLEEVES:
  - A. PROVIDE, SET, AND PROPERLY LOCATE PIPE SLEEVES AS REQUIRED FOR THIS WORK.
  - B. INTERIOR PARTITIONS: 16 GAUGE GALVANIZED STEEL, PACK BETWEEN CONDUIT AND SLEEVE WITH FIRE SAVING AND CULX AT EACH END WITH FIRE RESISTANT SEALANT.
  - C. ROOF: PROSET OR EQUAL, MANUFACTURED PVC SCHEDULE 40 PIPE SLEEVE WITH WEATHERPROOF SEAL. COORDINATE WITH ROOFING CONTRACTOR AND FLASH AS REQUIRED TO MAINTAIN ROOF WARRANTY.
15. GROUNDING:
  - A. GROUND ALL ELECTRICAL APPARATUS IN ACCORDANCE WITH THE NATIONAL ELECTRIC CODE (NEC) 250, AND ANY LOCAL REQUIREMENTS. INSURE CONTINUOUS BOND WHERE FLEXIBLE CONDUIT IS USED. PROVIDE BONDING JUMPER INSIDE ALL FLEXIBLE CONDUIT.
  - B. BOND METAL PIPING SYSTEMS IN COMPLIANCE WITH NEC 250.4(A)(4).
16. REMODELING WORK:
  - A. DEMOLITION, DISCONNECT, DEMOLISH AND REMOVE ABANDONED ELECTRICAL MATERIALS AND EQUIPMENT INDICATED TO BE REMOVED AND NOT INDICATED TO BE SALVAGED OR REMAIN.
  - B. EQUIPMENT TO BE SALVAGED:
    - 1) DISCONNECT AND REMOVE EXISTING ELECTRICAL EQUIPMENT INDICATED TO BE REMOVED AND SALVAGED. DELIVER EQUIPMENT TO THE LOCATION DESIGNATED BY THE OWNER FOR STORAGE.
    - 2) ALL MATERIALS AND EQUIPMENT DESIGNATED TO BE REUSED OR RELOCATED SHALL BE CAREFULLY REMOVED AND STORED UNTIL NEEDED FOR REMODELING WORK. ALL ITEMS SHALL BE RESTORED TO "LIKE NEW" CONDITION WITH RUST OR CORROSION REMOVED, SURFACE PAINT TOUCHED UP OR REPAIRED AS REQUIRED TO MATCH NEW CONSTRUCTION, AND THOROUGHLY CLEANED AND INSPECTED. ANY ITEMS WHICH BECOME DAMAGED BEYOND REPAIR AS A RESULT OF CONSTRUCTION OR DEMOLITION ACTIVITY SHALL BE REPLACED WITH NEW MATERIAL EQUIVALENT IN EVERY RESPECT.
  - C. DISPOSAL AND CLEANUP: REMOVE FROM THE SITE AND LEGALLY DISPOSE OF DEMOLISHED MATERIALS AND EQUIPMENT NOT INDICATED TO BE SALVAGED.
  - D. PROTECT ADJACENT MATERIALS INDICATED TO REMAIN. INSTALL AND MAINTAIN DUST AND NOISE BARRIERS TO KEEP DIRT, DUST, AND NOISE FROM BEING TRANSMITTED TO ADJACENT AREAS. REMOVE PROTECTION AND BARRIERS AFTER REMODELING OPERATIONS ARE COMPLETE.
  - E. PROVIDE ALL ALTERATIONS AND REWORK INDICATED AND/OR REQUIRED FOR THE PROPER INSTALLATION AND OPERATION OF ALL EXISTING ELECTRICAL SYSTEMS, INTEGRATING THE NEW AND EXISTING AREAS. LOCATE, IDENTIFY, AND PROTECT ELECTRICAL SERVICES PASSING THROUGH REMODELING AREA AND SERVING OTHER AREAS OUTSIDE THE REMODELING LIMITS. MAINTAIN SERVICES TO AREAS OUTSIDE REMODELING LIMITS. WHEN SERVICES MUST BE INTERRUPTED, INSTALL TEMPORARY SERVICES FOR AFFECTED AREAS.
    - 1) ABANDONED CONDUIT SHALL HAVE WIRE REMOVED AND SHALL BE CAPPED. ABANDONED OUTLETS IN WALLS OR PARTITIONS SHALL HAVE DEVICES AND WIRE REMOVED, AND SHALL BE COVERED.
    - 2) WHERE EXISTING CONDUITS TERMINATE AT AN EXISTING OUTLET IN A WALL, CEILING, OR FLOOR TO BE REMOVED, DISCONNECT AND REMOVE DEVICE AND WIRE FROM CONDUIT. CONDUIT SHALL BE CUT BACK AND CAPPED (BELOW THE FLOOR OR ABOVE THE CEILING) SO NOT TO CREATE AN OBSTRUCTION. PATCH FLOOR TO MATCH EXISTING.
    - 3) WHERE EXISTING CIRCUITS EXTEND BEYOND THE OUTLET IN THE EXISTING WALL, CEILING, OR FLOOR TO BE REMOVED, FURNISH AND INSTALL NEW CONDUIT AND WIRE TO EITHER REROUTE THE CIRCUIT OR FEED THE REMAINING OUTLET(S) FROM ANOTHER ELECTRICAL SOURCE, BUT IN SUCH A MANNER AS NOT TO REVISE THE CIRCUIT. ALL REROUTED CONDUIT SHALL BE APPROVED BY THE ARCHITECT.
    - 4) WHERE EXISTING OUTLETS IN A WALL, CEILING, OR FLOOR TO BE REMOVED ARE ESSENTIAL TO MAINTAIN OPERATION OF OTHER REMAINING OUTLETS, RELOCATE THE OUTLET TO A NEW CONVENIENT LOCATION. EXISTING WIRING DEVICES SHALL NOT BE REMOVED, UNLESS OTHERWISE INDICATED.
    - 5) WHERE LIGHTING FIXTURES ARE INDICATED TO BE DEMOLISHED, REMOVE ALL WIRE AND MODIFY THE EXISTING CONDUIT (IF APPLICABLE) FOR THE NEW LIGHTING. ALL UNUSED CONDUIT SHALL BE REMOVED.
    - 6) WHERE A TELEPHONE CIRCUIT EXTENDS BEYOND AN OUTLET IN AN EXISTING WALL, CEILING, OR FLOOR TO BE REMOVED, PROVIDE NECESSARY EMPTY CONDUIT AND NOTIFY THE OWNER WHO WILL REQUIRE THE OWNER TO ARRANGE WITH THE TELEPHONE COMPANY FOR NEW WIRING TO OUTLETS THAT REMAIN.
    - 7) WHERE EXISTING CONDUIT AND WIRE RUNS ARE LOCATED IN OR ATTACHED TO AN EXISTING WALL, CEILING OR FLOOR TO BE REMOVED, THEY SHALL BE REROUTED IN EITHER NEW OR EXISTING CONSTRUCTION TO MAINTAIN CONTINUITY OF CIRCUITS UNLESS OTHERWISE INDICATED.
    - 8) CONDUIT SHALL BE CONCEALED WITHIN THE EXISTING BUILDING CONSTRUCTION WHEREVER POSSIBLE, EXCEPT WHERE OTHERWISE INDICATED.
    - 9) EXISTING WIRE SHALL BE DISCONNECTED AND REMOVED WHEREVER EXISTING CIRCUITS ARE ABANDONED.

ELECTRICAL SYMBOLS LIST	
<b>CIRCUITING &amp; NOTES</b>	
+46"	SPECIAL MOUNTING HEIGHT FOR ASSOCIATED DEVICE (CENTERLINE OF DEVICE)
GFI	GROUND FAULT CIRCUIT INTERRUPTER DEVICE
WP	WEATHERPROOF ENCLOSURE ON DEVICE
WR	WEATHERPROOF RESISTANT DEVICE
IG	ISOLATED GROUND DEVICE
EM	EMERGENCY BATTERY BACKUP
FDS	FIRE SMOKE DAMPER
TR	TAMPER RESISTANT OUTLET
USB	COOPER # TRUSDPD20-X OR EQUAL DUPLEX RECEPTACLE WITH (1) USB-A AND (1) USB-C CHARGING PORTS. PROVIDE 2-1/8" DEEP BACK BOX.
(TIE)	PARTIAL HOMERUN. REFER TO PLANS FOR ADDITIONAL DEVICES CONNECTED TO THIS CIRCUIT.
X	ELECTRICAL FLOOR PLAN NOTE WITH DESIGNATION
LP	CONDUIT CONCEALED WHERE POSSIBLE OR AS NOTED, ARROWS INDICATE HOME RUN TO PANEL. CIRCUIT NUMBERS INDICATED
⌚	#12 WIRE IN CONDUIT, UNLESS NOTED OTHERWISE ON DRAWINGS OR SPECIFICATION
⌚	GROUNDING CONDUCTOR, #12 WIRE UNLESS NOTED OTHERWISE ON DRAWINGS OR SPECIFICATION
⌚	CONDUIT ROUTED UNDER FLOOR/GRADE
<b>LIGHTING</b>	
⌚	EMERGENCY TWIN HEAD LIGHT FIXTURE
⌚	EXIT LIGHT WITH DIRECTIONAL ARROWS INDICATED
⌚	STRIP FIXTURE WITH TYPE DESIGNATION
⌚	RECESSED OR SURFACE MOUNTED FIXTURE WITH TYPE DESIGNATION
⌚	NIGHT LIGHT, CONNECT TO UNSWITCHED CIRCUIT
⌚	CEILING OR RECESSED FIXTURE WITH TYPE DESIGNATION
⌚	WALL MOUNTED FIXTURE WITH TYPE DESIGNATION
<b>POWER DEVICES</b>	
⌚	DUPLEX RECEPTACLE, BOTTOM OF BOX AT 16" AFF, UNLESS NOTED OTHERWISE
⌚	FOURPLEX RECEPTACLE, BOTTOM OF BOX AT 16" AFF, UNLESS NOTED OTHERWISE
⌚	DEVICE MOUNTED ABOVE COUNTER AND/OR SPLASH GUARD
⌚	HEAVY DUTY OUTLET - NEMA CONFIGURATION SIZE PER EQUIPMENT MANUFACTURER'S RECOMMENDATION
⌚	PANEL BOARD, TOP OF BOX 6'-0" AFF
⌚	JUNCTION BOX
⌚	NON-FUSED DISCONNECT SWITCH
⌚	FUSED DISCONNECT SWITCH
⌚	MOTOR WITH DESIGNATION
⌚	FLOOR BOX
<b>CONTROLS</b>	
S	SINGLE POLE WALL SWITCH, TOP OF BOX AT 48" AFF
S 3	THREE-WAY WALL SWITCH, TOP OF BOX AT 48" AFF
S 0	DIMMER SWITCH, TOP OF BOX AT 48" AFF
S =	MANUAL MOTOR STARTER WITH OVERLOADS
<b>OCCUPANCY SENSORS</b>	
1. DUAL TECHNOLOGY ULTRASONIC CEILING SENSORS SHALL BE MOUNTED 6' FROM SUPPLY/EXHAUST AIR DIFFUSERS.	
2. LOW VOLTAGE CEILING SENSORS SHALL BE PROVIDED WITH 6' SLACK CONDUCTOR COILED AT SENSOR.	
S 0	WALL MOUNTED DUAL-TECHNOLOGY OCCUPANCY SENSOR, ACUTY SENSORS SWITCH #WSX-PDT-SA OR EQUAL, TOP OF BOX AT 48" AFF. SENSORS SHALL BE PROGRAMMED FOR MANUAL-ON OPERATION.
<b>COMMUNICATIONS</b>	
⌚	DATA/TELEPHONE OUTLET WITH MINIMUM 3/4" CONDUIT STUBBED UP TO ABOVE ACCESSIBLE CEILING, BOTTOM OF BOX AT 16" UNLESS NOTED OTHERWISE. PROVIDE WITH PULL STRING
⌚	MONITOR - PROVIDE AND INSTALL ONE (1) HUBBELL #R1510X RECESSED TAMPER-RESISTANT DUPLEX RECEPTACLE WITH COVERPLATE AND ONE (1) HUBBELL #HBL260 TWO GANG LARGE CAPACITY WALL BOX (UP TO 2" KNOCKOUT) W/ MUD RING AND COVERPLATE FOR DATA. PROVIDE 2" WITH PULL STRING TO ABOVE ACCESSIBLE CEILING FOR DATA CABLES. MOUNT BOX AT 5'-5" AFF UNLESS NOTED OTHERWISE (VERIFY)
<b>MISCELLANEOUS</b>	
⌚	COMBINATION POWER AND DATA FLOORBOX
⌚	LINE VOLTAGE THERMOSTAT PROVIDED BY MECHANICAL CONTRACTOR. ELECTRICAL CONTRACTOR TO PROVIDE AND INSTALL WIRING
⌚	120 - 24 VOLT INDUSTRIAL CONTROL TRANSFORMER 50 VA VA MINIMUM W/ CIRCUIT BREAKER (MANUAL RESET) FOR ALL VAV BOXES AND BYPASS DAMPERS. VERIFY EXACT REQUIREMENTS WITH MECHANICAL UNITS BEING SUPPLIED
⌚	CEILING MOUNT SMOKE DETECTOR

**ELECTRICAL GENERAL NOTES:**

1. COORDINATE ALL WORK WITH OTHER TRADES AND EXISTING CONDITIONS AS REQUIRED TO PROPERLY INSTALL ALL SYSTEMS AS INTENDED, WITHIN THE CONFINES OF THE SPACES AVAILABLE, AND WITHOUT INTERFERENCES.
2. IT IS THE ELECTRICAL CONTRACTORS RESPONSIBILITY TO PROPERLY BALANCE ALL BRANCH CIRCUITS BETWEEN THE PHASES OF THE SYSTEM REGARDLESS OF CIRCUITING INDICATED.
3. ALL EXPOSED RACEWAYS SHALL BE IN EMT CONDUIT, MC CABLE IS NOT PERMITTED IN EXPOSED AREAS.
4. ELECTRICAL CONTRACTOR SHALL REMOVE ALL EXISTING ELECTRICAL EQUIPMENT, FIXTURES, SYSTEMS, CONDUIT AND WIRE, ETC. NOT BEING REUSED. DO NOT JUST ABANDON.
5. ELECTRICAL CONTRACTOR TO COORDINATE MANUFACTURER ELECTRICAL REQUIREMENTS FOR HVAC EQUIPMENT BEING FURNISHED WITH MECHANICAL CONTRACTOR PRIOR TO ROUGH-IN. EQUIPMENT DISCONNECTS TO BE PROVIDED BY ELECTRICAL CONTRACTOR UNLESS NOTED OTHERWISE IN MECHANICAL SCHEDULES.
6. ALL ELECTRICAL DEVICES ARE EXISTING AND TO REMAIN UNLESS NOTED. OTHERWISE OR CONFLICT WITH NEW CONSTRUCTION. MAINTAIN PROPER OPERATION OF ALL EXISTING ELECTRICAL.
7. EACH BRANCH CIRCUIT SHALL HAVE A DEDICATED NEUTRAL PER NEC 210.4.
8. PLANS INDICATE MINIMUM WIRE SIZES PER NEC. ALL BRANCH CIRCUITS SHALL BE SIZED TO ALLOW FOR A MAXIMUM OF 3% VOLTAGE DROP. ALL FEEDERS SHALL BE SIZED TO ALLOW FOR A MAXIMUM OF 2% VOLTAGE DROP. ELECTRICAL CONTRACTOR SHALL VERIFY WIRING INDICATED IS SUFFICIENT AND INCREASE CONDUCTOR SIZE AS REQUIRED BASED OFF ACTUAL INSTALLED LENGTH OF CONDUCTORS.
9. PROVIDE LOW VOLTAGE WIRING BETWEEN ALL 0-10V DIMMING DRIVERS CONTROLLED BY 0-10V DIMMERS PER MANUFACTURER'S INSTRUCTIONS.
10. ALL 120 VOLT 20 AMP RECEPTACLES IN KITCHEN SHALL BE GFCI PROTECTED PER NEC 210.8 (B)(2). (GFCI DEVICE OR GFCI BREAKER AS INDICATED ON PLANS)
11. WHEREVER POSSIBLE, CONDUIT SHALL BE RUN CONCEALED WITHIN WALLS, CEILINGS, SOFFITS, ETC. SURFACE MOUNTED CONDUIT IN FINISHED SPACES MUST BE APPROVED BY THE ENGINEER OR ARCHITECT PRIOR TO INSTALLATION. EXTERIOR CONDUIT SHALL NOT BE RUN EXPOSED IN PUBLICLY VISIBLE AREAS WITHOUT APPROVAL OF THE ARCHITECT OR ENGINEER.

**HEALTH CARE FACILITY NOTES:**

1. PATIENT AREAS (CHAIR 8-11) SHALL COMPLY WITH NEC ARTICLE 517 FOR HEALTH CARE FACILITIES.
2. ALL BRANCH CIRCUITS SUPPLYING PATIENT AREAS SHALL HAVE REDUNDANT GROUNDING PER NEC 517.13(a) & (b). ALL UNDER FLOOR CONDUITS FOR BRANCH CIRCUITS SHALL BE METALLIC.
3. ALL DEVICES IN PATIENT CARE AREAS SHALL BE HOSPITAL GRADE, GROUNDING, THREE WIRE TYPE, RATED FOR 20 AMPS, WITH COVER PLATES. HUBBELL #HB1830H, OR EQUAL. VERIFY COLOR WITH ARCHITECT.
4. NEC 2017 - ALL RECEPTACLES INSTALLED IN BUSINESS OFFICES, CORRIDORS, WAITING ROOMS, AND SIMILAR ROOMS ACCESSIBLE TO THE PUBLIC SHALL BE TAMPER RESISTANT PER NEC 406.12(5)
5. REFER TO DENTAL EQUIPMENT SUPPLIER DRAWINGS FOR ADDITIONAL INFORMATION.

BC PROJECT #: 25889 LD/FS  
 MISSOURI PE COA #2009003629

This drawing has been prepared by the Engineer, or under his supervision. This drawing is provided as an instrument of service by the Designer/Engineer and is intended for use on the project only. Payment to the Architectural/Visual Copyright Protection Act of 1990, all drawings, specifications, ideas and designs, including the overall form, arrangement and composition of lines and elements appearing herein, constitute the original, copyrighted work of the Designer/Engineer. Any reproduction, use, or disclosure of information contained herein without prior written consent of the Engineer is strictly prohibited. © 2025 BC Engineers, Inc.

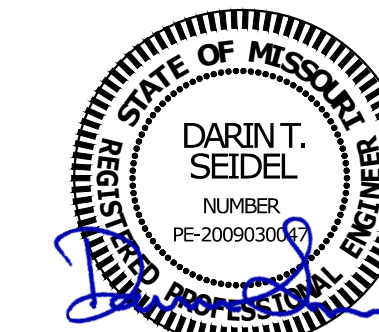
**BC ENGINEERS INCORPORATED**  
 5720 Reeder Shawnee, KS 66203 (913)262-1772

REV#	DATE	DESCRIPTION

Issue Date: 12-23-25  
 Project #: 25022

**ELECTRICAL SPECIFICATIONS**

**E0**

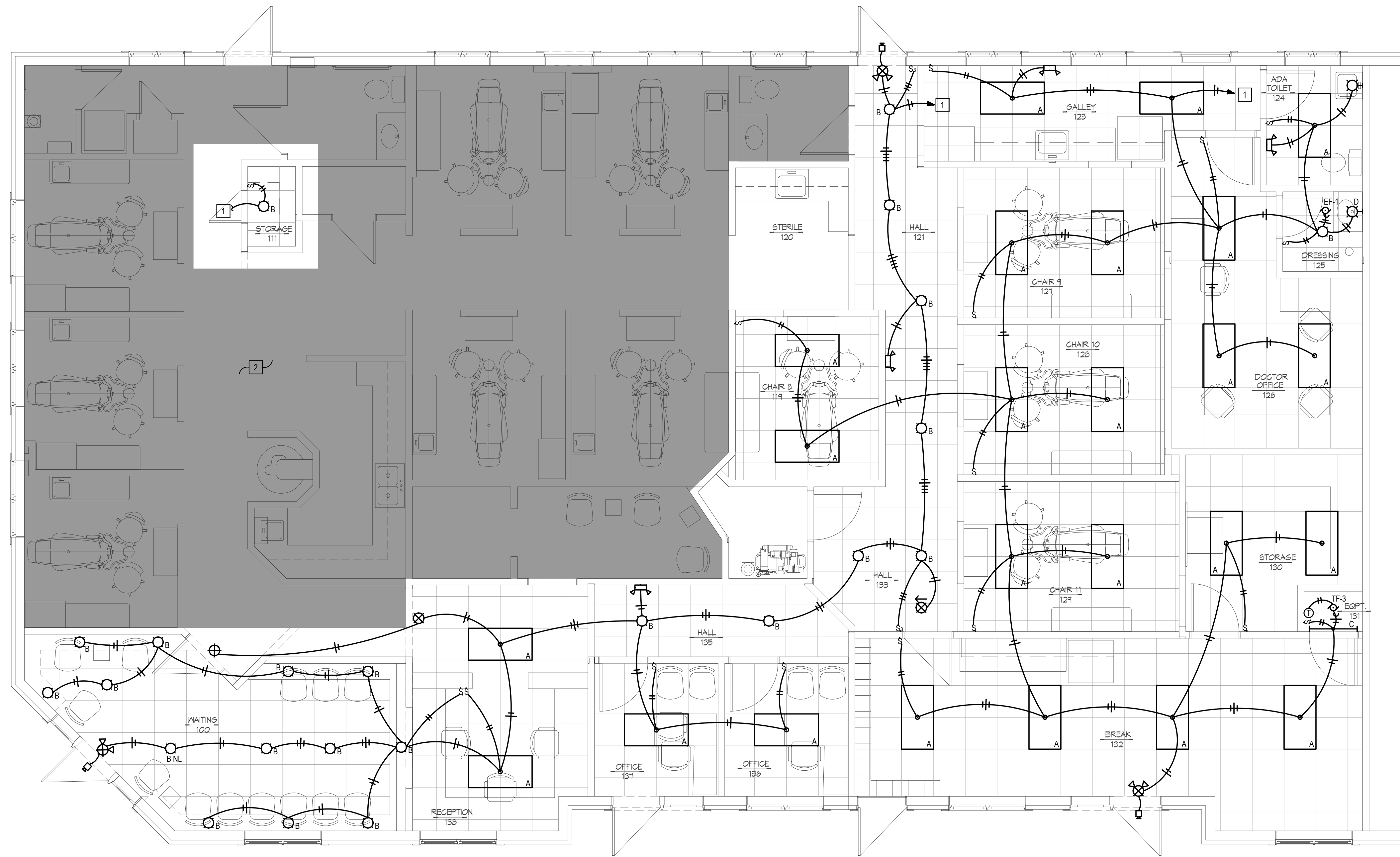


**GUY GRONBERG ARCHITECTS, P.C.**  
Lee's Summit, MO 64063  
Phone: 816.524.0515  
Fax: 816.524.0516



**BC ENGINEERS INCORPORATED**  
5720 Reeder Shawnee, KS 66203 (913)262-1772

**Bromley • Broyles • Luff**  
680 SE Bayberry Ln Suite 105, Lee's Summit, MO 64063



- LIGHTING PLAN NOTES:**
- 1 CONNECT TO EXISTING LIGHTING CIRCUIT SERVING THIS AREA.
  - 2 NO WORK IN THIS AREA.

**ELECTRICAL LIGHTING PLAN**  
NORTH SCALE: 1/4" = 1'-0"

BC PROJECT #: 25889 LD/FS  
MISSOURI PE COA #2009003629

This drawing has been prepared by the Engineer, or under his supervision. This drawing is provided as an instrument of service by the Design Engineer and is intended for use on the project only. Pursuant to the Architectural Works Copyright Protection Act of 1990, all drawings, specifications, ideas and designs, including the overall form, arrangement and composition of drawings and elements appearing hereon, constitute the original, copyrighted work of the Design Engineer. Any reproduction, use or disclosure of information contained herein without prior written consent of the Engineer is strictly prohibited. © 2025 BC Engineers, Inc.

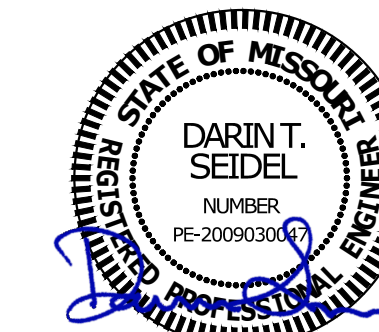


5720 Reeder Shawnee, KS 66203 (913)262-1772

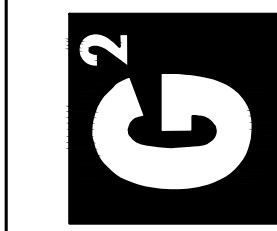
REV#	DATE	DESCRIPTION

Issue Date: 12-23-25  
Project #: 25022

**ELECTRICAL LIGHTING PLAN**  
**E1**

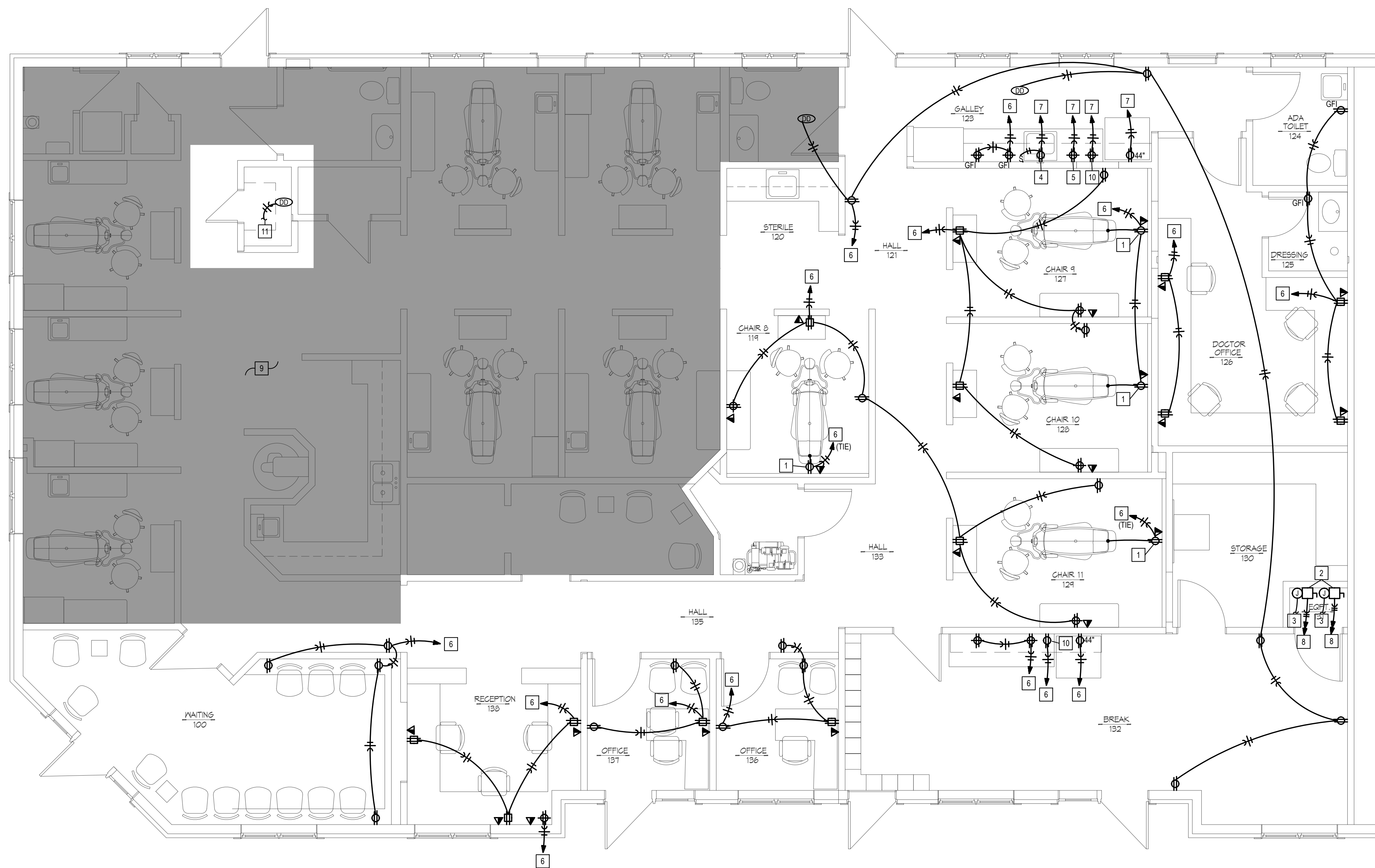


**GUY GRONBERG ARCHITECTS, P.C.**  
 119 5th 3rd St.  
 Lee's Summit, MO 64063  
 Phone: 816.524.0515  
 Fax: 816.524.0516



**BC ENGINEERS INCORPORATED**  
 5720 Reeder Shawnee, KS 66203 (913)262-1772

**Bromley • Broyles • Luff**  
 680 SE Bayberry Ln Suite 103, Lee's Summit, MO 64063



- POWER PLAN NOTES:**
- 1 DENTAL CHAIR DUPLEX RECEPTACLE: VERIFY LOCATION WITH OWNER. CHAIR MOUNTED DENTAL LIGHT POWERED FROM CHAIR.
  - 2 DISCONNECT SWITCH FOR POWER TO VACUUM AND AIR COMPRESSOR. PROVIDE BOOST TRANSFORMER PER EQUIPMENT SUPPLIER'S INSTRUCTIONS.
  - 3 CONNECT NEW AIR COMPRESSOR AND NEW VACUUM PUMP TO EXISTING MASTER CONTROL PANEL.
  - 4 DUPLEX RECEPTACLE MOUNTED UNDER SINK IN CASEWORK FOR POWER TO GARBAGE DISPOSAL DEVICE TO BE GFCI PROTECTED BY GFCI BREAKER IN PANEL.
  - 5 VERIFY LOCATION OF MICROWAVE OUTLET.
  - 6 CONNECT TO EXISTING 120V SPARE CIRCUIT WITH (2) #12, (1)#12G, IN 75° C. IN EXISTING PANEL. PROVIDE COMPATIBLE 20A BREAKER IF NECESSARY.
  - 7 CONNECT TO 120V GFCI BREAKER WITH (2) #12, (1)#12G, IN 75° C. IN EXISTING PANEL.
  - 8 CONNECT TO 220V 2P BREAKER WITH (2) #12, (1)#12G, IN 75° C. IN EXISTING PANEL.
  - 9 NO WORK IN THIS AREA.
  - 10 VERIFY LOCATION OF MICROWAVE MOUNTED HIGH ABOVE COUNTER.
  - 11 CONNECT TO UNSWITCHED 120VOLT CIRCUIT IN AREA.

**ELECTRICAL POWER PLAN**  
 NORTH SCALE: 1/4" = 1'-0"

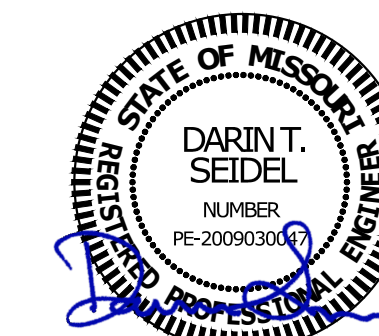
BC PROJECT #: 25889 LD/FS  
 MISSOURI PE COA #2009003629

This drawing has been prepared by the Engineer, or under his supervision. This drawing is provided as an instrument of service by the Design Engineer and is intended for use on the project only. Pursuant to the Architectural Works Copyright Protection Act of 1990, all drawings, specifications, ideas and designs, including the overall form, arrangement and composition of drawings and elements appearing hereon, constitute the original, copyrighted work of the Design Engineer. Any reproduction, use or disclosure of information contained herein without prior written consent of the Engineer is strictly prohibited. © 2025 BC Engineers, Inc.



REV#	DATE	DESCRIPTION

Issue Date: 12-23-25  
 Project #: 25022



**Bromley • Broyles • Luff**  
 680 SE Bayberry Ln Suite 103, Lee's Summit, MO 64063



REV#	DATE	DESCRIPTION

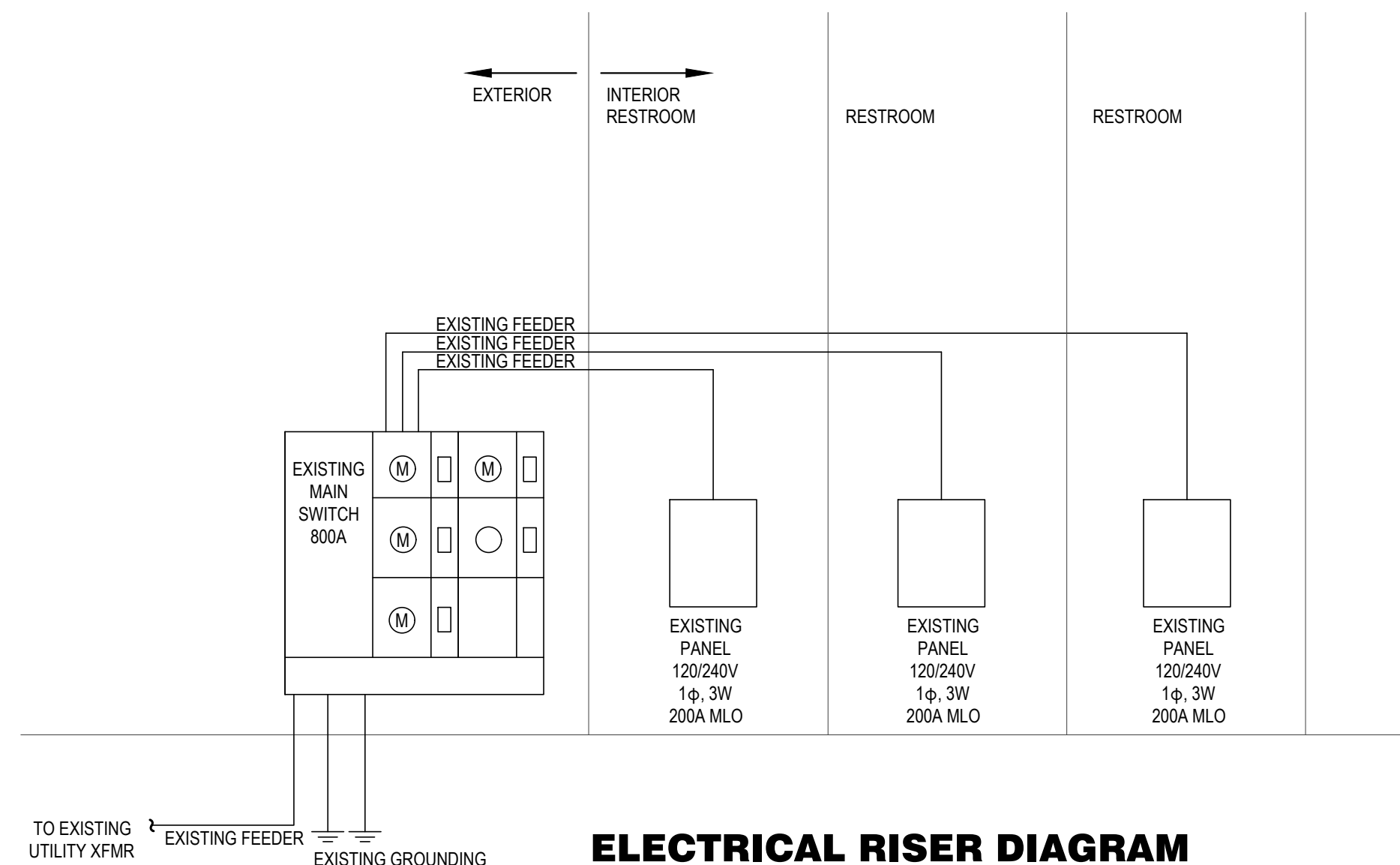
Issue Date: 12-23-25  
 Project #: 25022

**ELECTRICAL  
 DETAILS**  
**E3**

**LIGHT FIXTURE SCHEDULE**

MARK NO.	MANUFACTURER & CATALOG NUMBER	VOLTS WATTS	LAMPS	DESCRIPTION	EQUIVALENT MANUFACTURERS
A	LITHONIA EPNL 2X4 4800LM 80CRI 40K MIN1 ZT MVOLT	120 45	LED 4800L 4000K	LED FLAT PANEL WITH DIMMING	WILLIAMS COOPER OR EQUAL
B	LITHONIA LDN6 4020 L06 AR LSS 120 GZ10	120 22.6	LED 2000L 4000K	6" RECESSED CAN LED DOWNLIGHT, 2000 LUMEN, 4,000 KELVIN	WILLIAMS COOPER OR EQUAL
C	LITHONIA CLXL36-2250LM-SEF-RDL- MVOLT-GZ10-40K-80CRI-WH	120 16.4	LED 2250L 4000K	3 FT LED STRIP FIXTURE, SURFACE MOUNT ABOVE DOOR	WILLIAMS COOPER OR EQUAL
D	WALL SCONCE OWNER PROVIDED/ CONTRACTOR INSTALLED	120 20	TBD 4000K	\$200 ALLOWANCE PER EACH FIXTURE	
	DUAL-LITE EVZ	120 1	INCL	EMERGENCY LIGHT WITH TWIN ADJUSTABLE 1 WATT LED HEADS AND BATTERY, MOUNT AT 7'-6"±, TO CLEAR OBSTACLES. (PROVIDES 1 FC AVG. ON 30' CENTER FIXTURE SPACING)	SURE-LITES LITHONIA OR EQUAL
	DUAL-LITE EVE-U-R-W-E	120 1	INCL	EXIT LIGHT WITH LED LAMPS, RED LETTERS ON WHITE BACKGROUND, UNIVERSAL MOUNT, BATTERY BACKUP	SURE-LITES LITHONIA OR EQUAL
	DUAL-LITE EVC-U-R-W	120 3	INCL	COMBINATION EMERGENCY/EXIT LIGHT WITH LED LAMPS, RED LETTERS ON WHITE BACKGROUND, TWIN LED EMERGENCY LIGHT HEADS, UNIVERSAL MOUNT, BATTERY BACKUP	SURE-LITES LITHONIA OR EQUAL
	DUAL-LITE EVC-U-R-W-D4 WITH EVO-D-X	120 5	INCL	COMBINATION EMERGENCY/EXIT LIGHT WITH LED LAMPS, RED LETTERS ON WHITE BACKGROUND, TWIN 6W EMERGENCY LIGHT HEADS, UNIVERSAL MOUNT, HIGH CAPACITY BATTERY BACKUP AND REMOTE TWIN HEAD OUTDOOR RATED FIXTURE	SURE-LITES LITHONIA OR EQUAL

NOTES:



**ELECTRICAL RISER DIAGRAM**  
 FOR REFERENCE ONLY

BC PROJECT #: 25889 LD/FS  
 MISSOURI PE COA #2009003629  
This drawing has been prepared by the Engineer, or under his supervision. This drawing is provided as an instrument of service by the Designer/Engineer and is intended for use on the project only. Pursuant to the Architectural Works Copyright Protection Act of 1990, all drawings, specifications, ideas and designs, including the overall form, arrangement and composition of drawings and elements appearing herein, constitute the original, copyrighted work of the Designer/Engineer. Any reproduction, use or disclosure of information contained herein without prior written consent of the Engineer is strictly prohibited. © 2025 BC Engineers, Inc.

