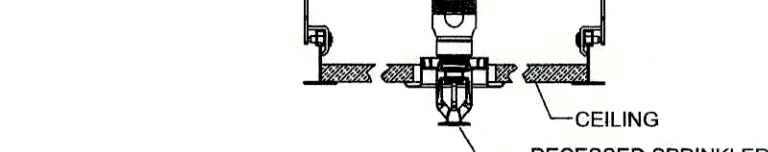


①	SEE SHEET 1 FOR U.G. PIPING & RISER DETAIL.
②	IT IS THE RESPONSIBILITY OF OTHERS TO PROTECT ELECTRICAL EQUIPMENT FROM SPRINKLER SPRAY, ESPECIALLY THIS AREA.
③	FIRE PROTECTION FOR KITCHEN HOOD BY OTHERS.
④	AUXILIARY DRAIN. (LOCATE IN FIELD)
⑤	AUTOMATIC AIR VENT LOCATED AT THE TOP OF RISE (HIGHEST POINT OF SYSTEM)



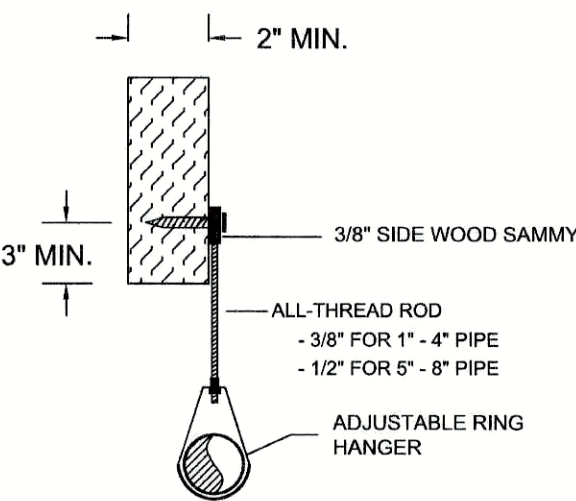
MAXIMUM DISTANCE BETWEEN HANGERS (FT-IN.) PER NFPA-13									
PIPE SIZE	3/4"	1"	1 1/2"	1 3/4"	2"	2 1/2"	3"	4"	6"
STEEL PIPE	N/A	12-0	12-0	15-0	20-0	15-0	15-0	15-0	15-0
THREAIGHT LIGHTWALL	N/A	12-0	12-0	12-0	12-0	12-0	12-0	N/A	N/A
COPPER	8-0	8-0	10-0	10-0	12-0	12-0	12-0	15-0	15-0
CPVC	5-6	6-0	6-6	7-0	8-0	9-0	10-0	N/A	N/A

DISTANCE FROM SPRINKLER TO HANGER PER NFPA-13	
	<p>MAX.</p> <p>THEN EXTEND HERE</p> <p>GREATER THAN 36" FOR 1" GREATER THAN 48" FOR 1 1/2" GREATER THAN 60" FOR 1 3/4" & LARGER</p>

HANGER ROD SIZE PER NFPA-13			
PIPE SIZE	DIAM. OF ROD	PIPE SIZE	DIAM. OF ROD
UP TO AND INCLUDING 4"	3/8"	6" AND 8"	1/2"

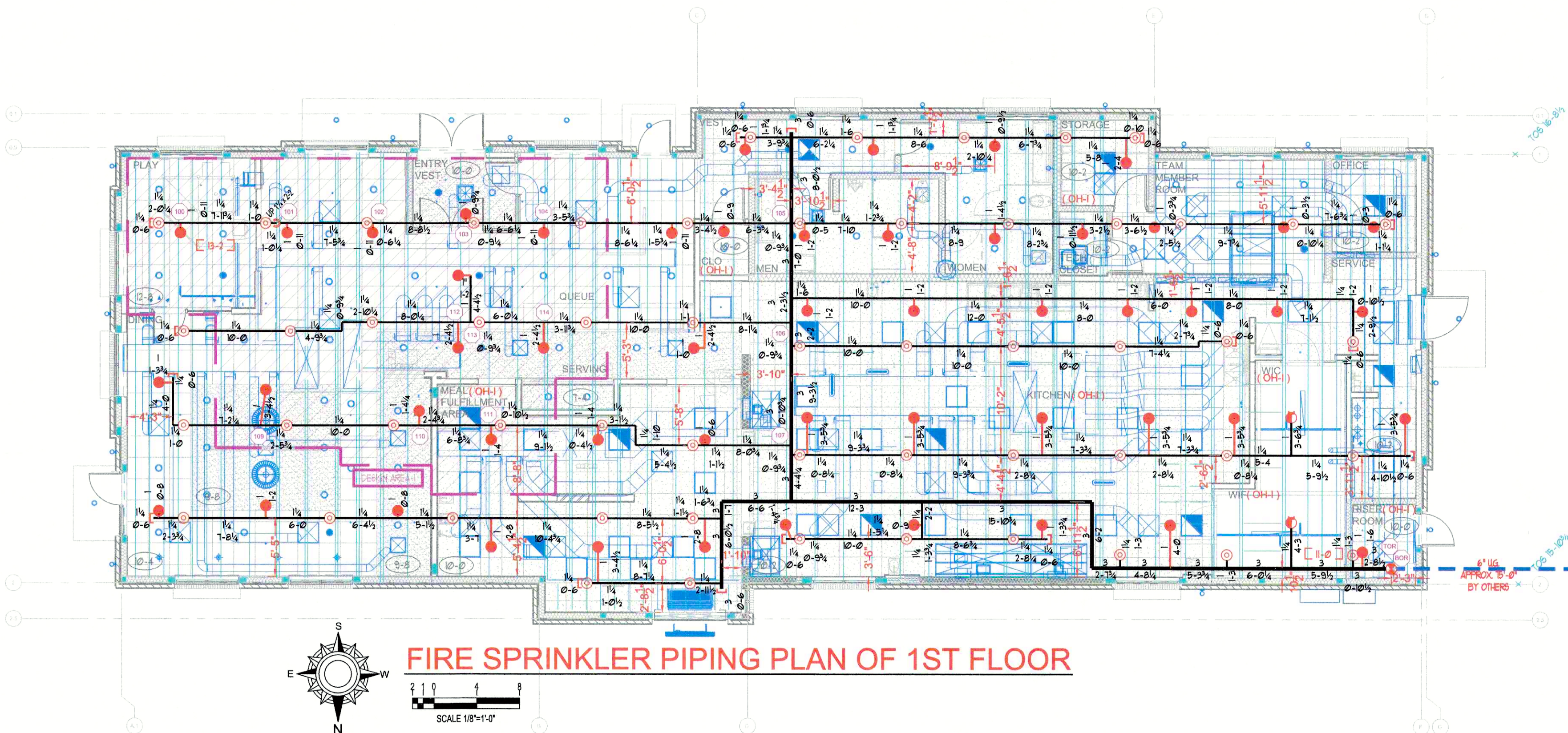
NOTE: IF PRESSURE EXCEEDS 100 PSI:
PROVIDE HANGER FOR ANY ARM-OVER
(TO PENDENT HEAD) LONGER THAN 1'-0"

HANGER SPACING CHART



WOOD HANGER DETAIL

N.T.S.



GENERAL NOTES

- | | |
|----|---|
| 1) | SPRINKLER SYSTEMS ARE TO BE MAINTAINED IN ACCORDANCE WITH NFPA #25. THIS IS OWNER'S RESPONSIBILITY UPON CONTRACTOR'S SUBSTANTIAL COMPLETION. |
| 2) | ALL ALARM AND SUPERVISORY SWITCHES ARE TO BE MONITORED. (BY OTHERS) |
| 3) | INSTALLATION TO BE IN ACCORDANCE WITH MINIMUM REQUIREMENTS OF NFPA #13. WHETHER INDICATED ON THE DRAWINGS OR NOT, THE FOLLOWING IS TO BE PROVIDED:
- SUPERVISION OF VALVES CONTROLLING WATER SUPPLIES
- LOCAL AUDIBLE ALARM
- QUICK RESPONSE SPRINKLERS IN ALL LIGHT HAZARD OCCUPANCIES
- ADEQUATE SUPPORT OF ALL PIPE AND COMPONENTS
- INSPECTOR'S TEST CONNECTION FOR EACH SYSTEM
- PROVISION FOR FLUSHING AND DRAINING OF ALL NEW SPRINKLER SYSTEM PIPING
- PROTECTION OF PIPING WHERE SUBJECT TO FREEZING. THIS IS OWNER'S RESPONSIBILITY UPON CONTRACTOR'S SUBSTANTIAL COMPLETION
- PROTECTION OF RATED WALL/FLOOR PENETRATIONS WITH LISTED FIRE-STOP ASSEMBLIES
- HYDRAULIC CALCULATION PLACARD ON SYSTEM RISER
- SPARE SPRINKLER HEAD CABINET WITH HEADS AND WRENCHES PER NFPA #13 |
| 4) | ALL NEW MATERIALS TO BE U.L. LISTED, OR AS ACCEPTABLE TO THE AUTHORITY HAVING JURISDICTION BASED ON PUBLISHED RATINGS, DATA, TESTS, ETC. |
| 5) | WELDING IS TO BE IN ACCORDANCE WITH NFPA #13. INCLUDING WELDER CERTIFICATION AND IDENTIFICATION STAMP. |
| 6) | ACCEPTANCE TESTS TO BE IN ACCORDANCE WITH NFPA #13. |
| 7) | SPRINKLER HEAD SPACING, LOCATION, POSITION, AND TEMPERATURE, AS WELL AS MINIMUM GPM AND PSI REQUIREMENTS ARE TO BE IN ACCORDANCE WITH NFPA #13 AND MANUFACTURER'S DATA. VERIFY ALL SPRINKLER HEADS ARE UNOBSTRUCTED. INSTALL HIGHER TEMPERATURE HEADS NEAR HEAT SOURCES AS REQUIRED PER NFPA #13 |

PROJECT NOTES

- | | |
|----|--|
| 1) | CODES: IBC-2018, NFPA 13-2016. FIRE DISTRICT USES IBC-2021 AND IF ANY CONFLICTS IBC-2021 SHALL SUPERCEDE. |
| 2) | APPROVAL: CITY OF LEE'S SUMMIT |
| 3) | CONSTRUCTION TYPE: NEW CONSTRUCTION TYPE VB |
| 4) | SCOPE OF WORK: AEGIS FIRE PROTECTION'S WORK STARTS AT THE FLANGE IN THE SERVICE ROOM AND IS TO PROVIDE (1) NEW WET FIRE PROTECTION SYSTEM THROUGHOUT THE APPROX. 5,500 SQ.FT. BUILDING PER CONTRACT DOCUMENTS AND FPA 13-2016. EXTERIOR CANOPIES (NOT IN CONTRACT) ARE OUTSIDE, NON COMBUSTIBLE, AND NOT USED FOR STORAGE. NO SPRINKLERS REQUIRED. |
| 5) | PIPE SIZING IS BASED ON HYDRAULIC CALCULATIONS AND NFPA 13-2016 |
| 6) | ALL AREAS ARE CLASSIFIED LIGHT HAZARD, UNLESS NOTED OTHERWISE |
| 7) | IDENTIFICATION AND LABELING OF PIPING TO BE BY OTHERS |
| 8) | PROTECTION OF PIPING WHERE SUBJECT TO EARTHQUAKES IS NOT REQUIRED. SEISMIC DESIGN CATEGORY "B" |
| 9) | SPRINKLERS SHALL BE LOCATED IN CENTER OF LAY-IN CEILING TILE. |

PIPE AND FITTINGS

- | | |
|----|---|
| 1) | ALL NEW WET SYSTEM GROOVED PIPING
- BLACK STEEL SCHEDULE 10 OR EQUAL
- STANDARD AND LIGHT WEIGHT, GROOVED, WELDED, PLAIN-END SOCKET, OR MECHANICAL TEE FITTINGS |
| 2) | ALL NEW WET SYSTEM THREADED PIPING
- BLACK STEEL SCHEDULE 40 OR EQUAL
- STANDARD WEIGHT SCREWED FITTINGS |

SPRINKLER LEGEND (ENTIRE PROJECT)

[illegible]

CONTRACTOR SHALL USE SPRINKLERS LISTED. (OR EQUAL)

* - IF SPRINKLER IS WITHIN 1'-0" RADIUS OF DIFFUSER, INTERMEDIATE TEMPERATURE SHALL BE USED.

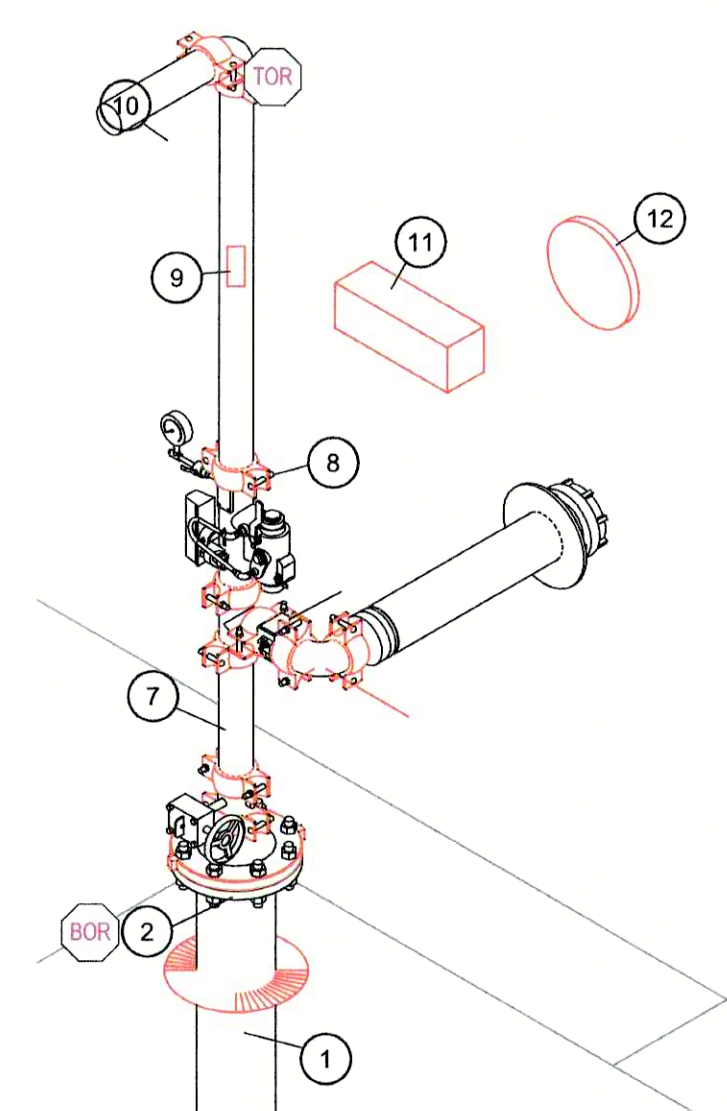
** - IN AREAS WITH CEILING MOUNTED LIGHTS, 2-PIECE DEEP ESCUTCHEONS SHALL BE USED.

FLOW TEST INFORMATION

- | | |
|---|---------------------------|
| - | DATE: 11/25/2025 |
| - | BY: AEGIS FIRE PROTECTION |
| - | STATIC: 72 PSI |
| - | RESIDUAL: 56 PSI |
| - | FLOW: 2127 GPM |

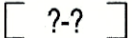
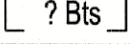


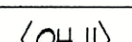




RISER LEGEND

- | | |
|----|--|
| 1 | 6" SERVICE LEAD-IN - BY OTHERS |
| 2 | 6" X 3" GROOVED STYLE 50 REDUCER. AEGIS FIRE PROTECTION'S WORK STARTS HERE. |
| 3 | NOT USED |
| 4 | NOT USED |
| 5 | NOT USED |
| 6 | NOT USED |
| 7 | 3" COLT C200 BACKFLOW PREVENTER ASSEMBLY. |
| 8 | 3" VICTAULIC 747M RISER MANIFOLD W/PRESSURE RELIEF VALVE. INCLUDES FLOW SWITCH, TEST N DRAIN, AND PRESSURE GAUGE. OR EQUAL |
| 8 | HYDRAULIC INFORMATION PLACARD |
| 10 | 3" SYSTEM SUPPLY. SEE FIRE PROTECTION PLAN THIS SHEET FOR CONTINUATION. |
| 11 | SPARE SPRINKLER CABINET PER NFPA-13 |



RISER SCHEMATIC

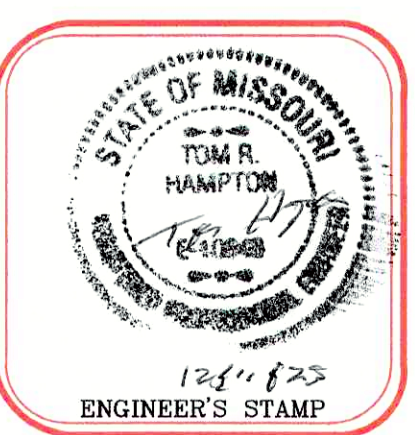
N.T.S.

SYMBOL LEGEND	
SYMBOL	DESCRIPTION
	DIMENSION FROM FINISHED FLOOR UP TO CENTERLINE OF PIPE (FEET & INCHES)
	DIMENSION FROM BOTTOM OF DECK, DOWN TO CENTERLINE OF PIPE (INCHES)
	CEILING HEIGHT
	HYDRAULIC CALCULATION REFERENCE POINT
	ORDINARY HAZARD GROUP I OCCUPANCY CLASSIFICATION
	ORDINARY HAZARD GROUP II OCCUPANCY CLASSIFICATION
	UNDERGROUND PIPING
	NEW PIPING
	FULL HEIGHT WALL
	LOW WALL (TOP OF WALL IS MORE THAN 18" BELOW SPRINKLERS. NO OBSTRUCTION)

HYDRAULIC CALCULATED SYSTEM		Additional Calculation Information:	
System installed by: AEGIS FIRE PROTECTION, LLC		Design Area ID:	DESIGN AREA-1
as shown on sheet	FPI dated 12/09/2025	System Type:	WET
Calculated Area Location: DINING AND SURROUNDING AREAS		Number of Sprinklers:	11
Project: CHICK FILA CAFE		Flow Summary:	
Project Location: 1025 SW JERRELL STREET, LEES, SUMMIT, MO 64081		Overhead Sprinklers:	287.61 gpm
Contract Number: DPO-18333-40		In-Rack Sprinklers:	0 gpm
		Inside Hoses:	0 gpm
		Outside Hoses:	250 gpm
		Other Piped Flows:	0 gpm
System designed to discharge at a rate of 0.1 gpm/ft ²		Total All Flows:	517.61 gpm
over 1357 ft ² when applied with water at a volume of 287.61 gpm	at 58.48 psi at code BOR with a hose allowance of 250 gpm		
Occupancy Classification: LIGHT HAZARD		Pressure Summary:	
Commandity Classification:		Pressure Available from Supply:	70.83 psi
Storage Arrangement:		Pressure Required from System:	60.74 psi
Maximum Storage Height:		Surplus Pressure (Safety):	10.09 psi
Notes:			
QR REDUCTION PER NFPA 11: 28.5		Maximum Velocity:	21.32 f/s
250 GPM OUTSIDE HOSE TO ACCOMMODATE FOR KITCHEN AREA		Flow/Reaction System Volume:	N/A gal

[illegible]

Aegis Fire Protection, LLC
Corporate: 11936 W. 119th St. #262 Overland Park, KS 66213
Phone: 913-825-0343 Fax: 913-322-4475



JOB NO.
DPC-19533-140
JOB NAME:

CHICK FIL A
1025 SW. JEFFERSON STREET
LEE'S SUMMIT, MO 64081

SYSTEM TYPE:	WET
TOTAL HEADS:	109
AHJ:	CITY & OWNER
SCALE:	SEE PLAN
DESIGNED BY:	BD
CHECKED BY:	KS
DATE:	10/09/2025

SHEET NO.
FP1
1 OF 1