



200 E. Mallard Drive Boise, Idaho 83706, www.RedBuilt.com

SHOP DRAWING SUBMITTAL

Project Number: 142840
Project Name: Chick-fil-A #5248
Project Address: 1025 SW Jefferson Street
LEE'S SUMMIT, MO 64081
Project Description: **Wall Panel Package**

09/26/25: CDA's review of these documents is limited solely to the specific items on which comments are provided. See engineer's stamp and comments for additional requirements where applicable.

Date: 9/19/2025
1:52:13 PM

PROJECT INFORMATION:

KURZYSKE: PLEASE SEE ATTACHED REVISED PLUMBING SHEET.

Current Submittal: OUT FOR APPROVAL - NOT FOR PRODUCTION

REFERENCE DOCUMENTS:

DISCIPLINE	BY	DATE	REV#	TYPE	SHEET SET
Architectural	Chipman Design Architecture Inc.	7/18/25	1	Construction	Full Set
Structural	Britt, Peters & Associates	7/18/25	1	Construction	Full Set
Mechanical	Kurzyske & Associates	7/18/25	1	Construction	Full Set

PROJECT CONTACTS:

Your primary contact:

Project Manager:

Phil Hoover
(208) 364-1343
phoover@redbuilt.com

Your secondary contact:

Sales Rep:

Nick Wolf

(740) 513-1111

nwolf@redbuilt.com



BRITT, PETERS
AND
ASSOCIATES
INC.
consulting engineers

This document has been reviewed for conformance with the design concepts and general compliance with the contract documents. The Contractor is responsible for confirming and correlating all quantities and dimensions, fabrication and construction methods, and coordinating this work with all other trades.

☐ NO EXCEPTIONS TAKEN
☒ EXCEPTIONS NOTED
☐ RESUBMIT

Date: 09/24/2025
By: akmoore

SHOP DRAWINGS ARE TO BE REVIEWED AND RETURNED WITHIN TWO WEEKS OF SUBMISSION.

PLEASE DIRECT ANY QUESTIONS REGARDING THE INDUSTRIALIZED CONSTRUCTION REVIEW PROCESS TO TRENT GILLEY AT trent.gilley@cfacorp.com

Material List and Calculation Pages: **1-3**

Shop Drawing Pages: **R005-R404**

Our responsibility is limited to the design of RedBuilt products in accordance with the above referenced documents based on design loads specified by the Engineer Of Record.

IMPORTANT (Please Read)

- Provide this RedBuilt Submittal Package to the contractor/installer and Design Professional(s) of Record.
- Ensure the RedBuilt Submittal Package is verified and/or corrected for accuracy, including all clouded items.
- Materials furnished by RedBuilt are limited to those included in the material list provided herein.
- Installation of the materials is the sole responsibility of the installer.

Please return reviewed drawings to your Project Manager with Engineer Of Record stamped instructions.

Comment	Preliminary: Not For Production
Status	Out For Approval
Report Type	Customer

RedBuilt™ Wall Panel Products				Double Top Plate					
Quantity	Type	Size	Length	Material			Footage	Notes	
1		2x4	16'-0.00"					16.0	

41		2x6	16'-0.00"			656.0	
5		2x8	16'-0.00"			80.0	

RedBuilt™ Wall Panel Products				Loose Lumber			
Quantity	Type	Size	Length	Material		Footage	Notes
1		2x12	16'-0.00"			16.0	1
100		2x6	20'-0.00"			2000.0	2
1		6x6	8'-0.00"			8.0	3
Note 1		Supplied for use as header (see RB detail 2/R200, panel E17).					
Note 2		Supplied for use as temporary bracing.					
Note 3		Supplied for use as header.					

RedBuilt™ Wall Panel Products				Sill Plate and Sill Plate Accessories			
Quantity	Type	Size	Length	Material		Footage	Notes
2		5/8" D	4'-0.00"	Threaded Rod		8.0	
6		7/8" D	4'-0.00"	Threaded Rod		24.0	
8		1" D	4'-0.00"	Threaded Rod		32.0	
201		5/8x10		Titen HD Screw Anchor		0.0	

Third-Party (Sourced by RedBuilt™)			Sheathing				
Quantity	Type	Description					Notes
102		OSB ZIP 0.500" 48x96 Panel					

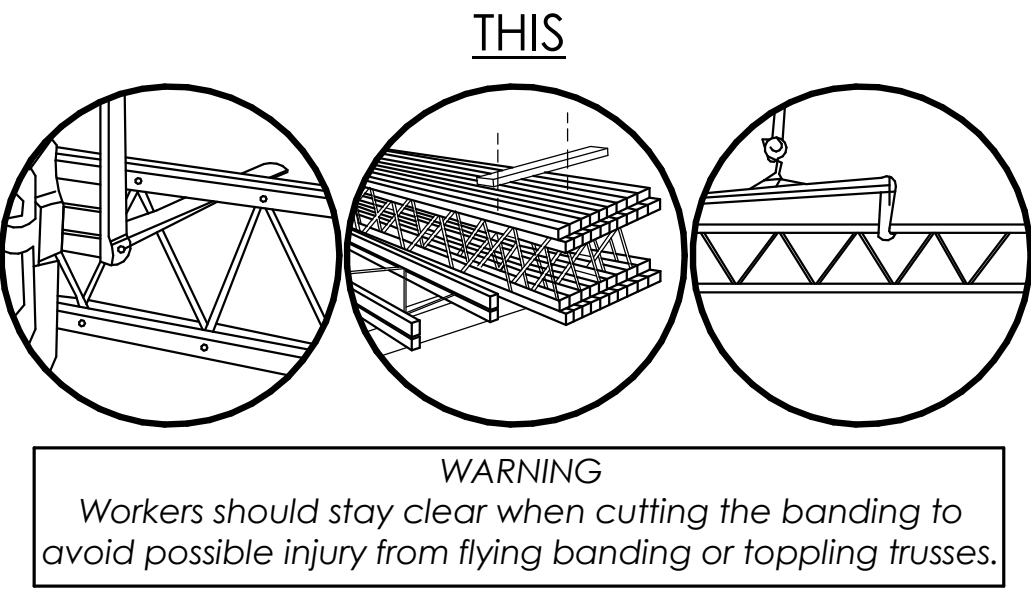
NOT REVIEWED BY CDA

OPEN-WEB TRUSS INSTALLATION INFORMATION

ATTENTION BUILDER
Enclosed is IMPORTANT information on how to safely and properly install RedBuilt™ Joists. Personal injury or death may result from failure to read and follow this information.

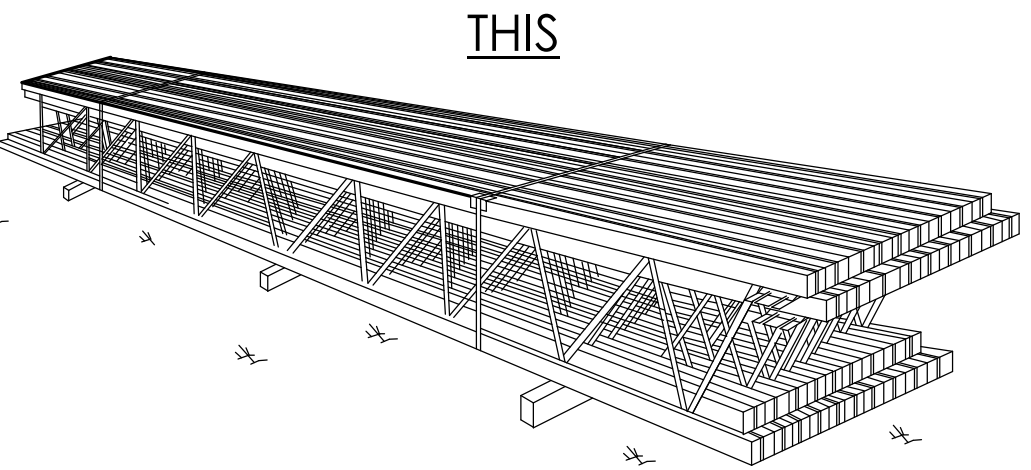


1 PRODUCT HANDLING



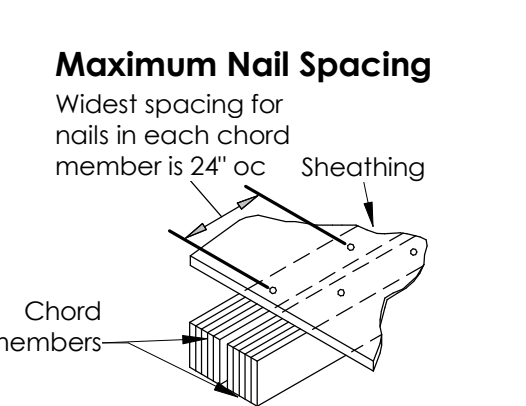
- Trusses will be delivered to the jobsite in bundles of twenty or fewer, banded together for handling and shipment. To avoid damage they should be left in these bundles until they are ready to be installed in the structure.
- Miscellaneous hardware such as bearing angles, lag screws, bolts and nails as required for each specific job will be shipped in bags or boxes with the trusses.
- Bridging material and pre-cut blocking items, if supplied by RedBuilt™, will be bundled and banded.

2 PRODUCT STORAGE



- Always set truss bundles on stickers placed at the truss pin locations. Never store trusses flat or set trusses directly on the ground or in contact with standing water.
- Cover truss bundles with paper wrap or canvas tarps to protect them from the weather. Do not use plastic covers as they will cause moisture to accumulate on the trusses. Prolonged exposure to the elements harms the appearance and strength of the trusses.

3 NAILING OF SHEATHING TO TOP CHORD MEMBERS



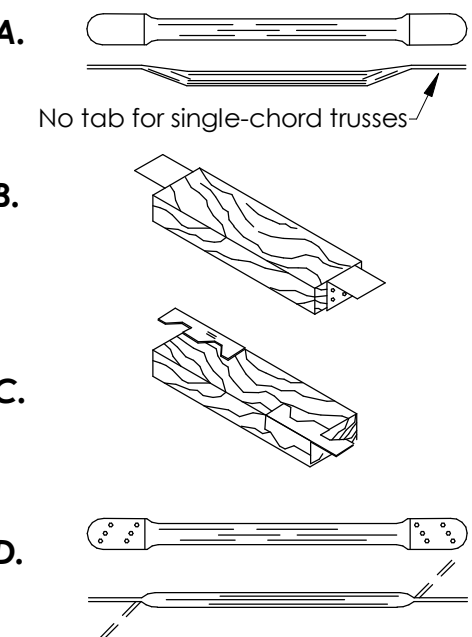
Minimum Nail Spacing

Nail Size	Red-L™ Red-W™	Red-S™	Red-M™ Red-H™	RedLam™LVL Narrow Face
.113" x 2 1/2"	4"	4"	2"	3"
.131" x 2 1/2"	6"	6"	2"	3"
.128" x 3"	6"	6"	2"	3"
.148" x 3"	6"	6"	2 1/2"	4" (2)
.128" x 3 1/4"	6"	6"	2"	3"
.148" x 3 1/4"	6"	6"	2 1/2"	4" (2)
.135" x 3 1/2"	6"	6"	2 1/2"	3"
.148" x 3 1/4"	6"	6"	2 1/2"	4" (2)
.162" x 3 1/2"	8"	8"	4"	8" (3)

- 14 gauge staples may be a direct substitute for 8dx2 1/2" nails if a minimum penetration of 1" into the flange is maintained.
- Minimum spacing must be 5" for 4 rows of nails.
- Spacing may be reduced to 5" where nail penetration does not exceed 1 3/8". If more than one row of nails is used, offset rows at least 1/2" and stagger. Maintain 3/8" minimum edge distance.

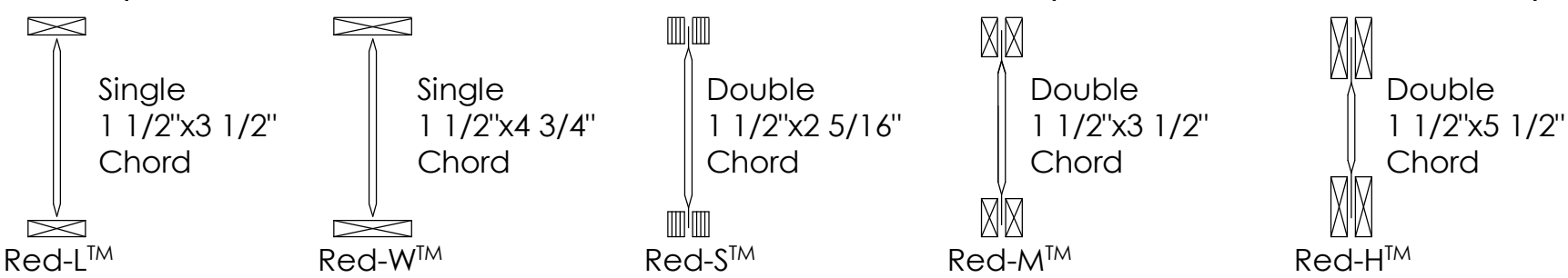
IMPORTANT
Nailing closer than specified may cause the chords to split.

4 MATERIAL IDENTIFICATION



- A. **Strut Bracing** is tubular steel with flattened ends supplied with all open-web trusses (Simpson HRS12 supplied for 12" OC systems). Strut bracing to be installed as each truss is set. See sections 5A - 5D.
- B. **Plywood Edge Blocking** is provided by RedBuilt™ on some projects and used for nailing sheathing edges. Edge blocking does not take the place of strut bracing and will not prevent trusses from bowing. Install edge blocking after strut bracing (installation bracing) is in place and immediately prior to laying sheathing.
- C. **2x4 Starter Struts** supplied by contractor with framing anchors each end (shipped loose) supplied by RedBuilt™. Flatten speed prong and fold portion of vertical tab around end of 2x4. Attach with 6-8dx1 1/2" nails each end. See sections 5A and 5D.
- D. **Cross Bracing** is provided for most bottom-bearing locations. Cross bracing to be installed as each truss is set. Contractor to bend ends prior to installation.

RedBuilt™ Open-Web Truss Product Sections - Refer to plan for series and depth



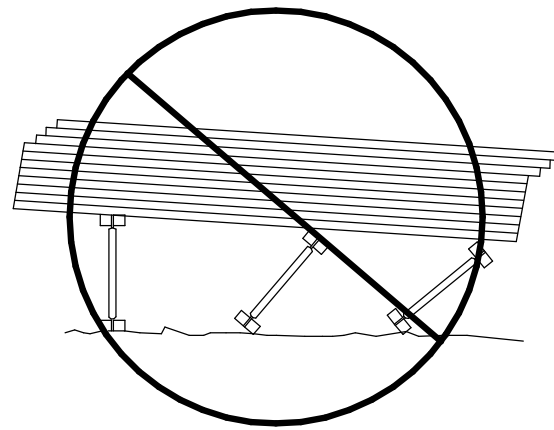
5 INSTALLATION BRACING



DO NOT walk on the trusses until all truss bearings and bracing have been permanently attached. Injury may result.

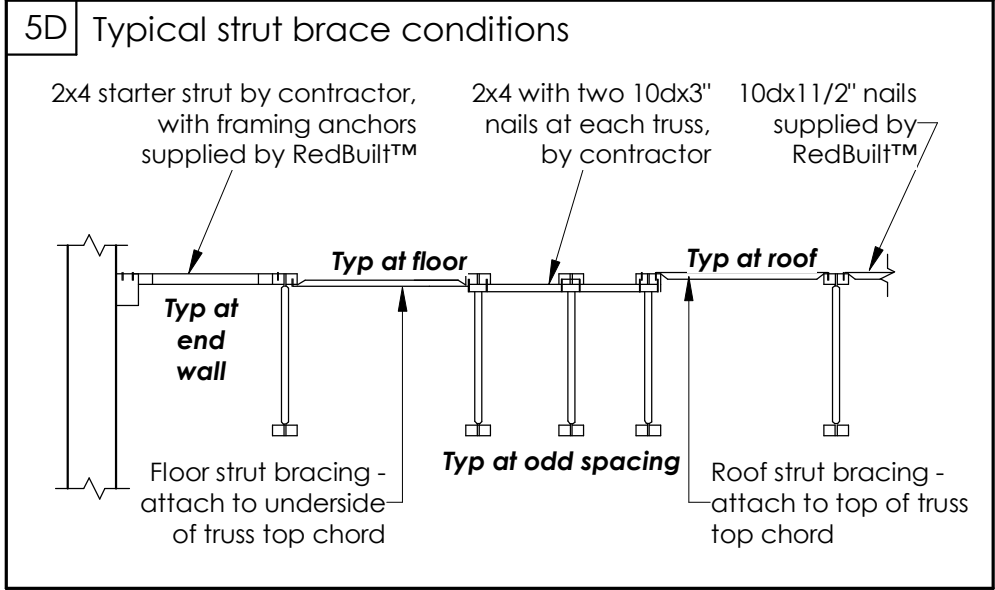
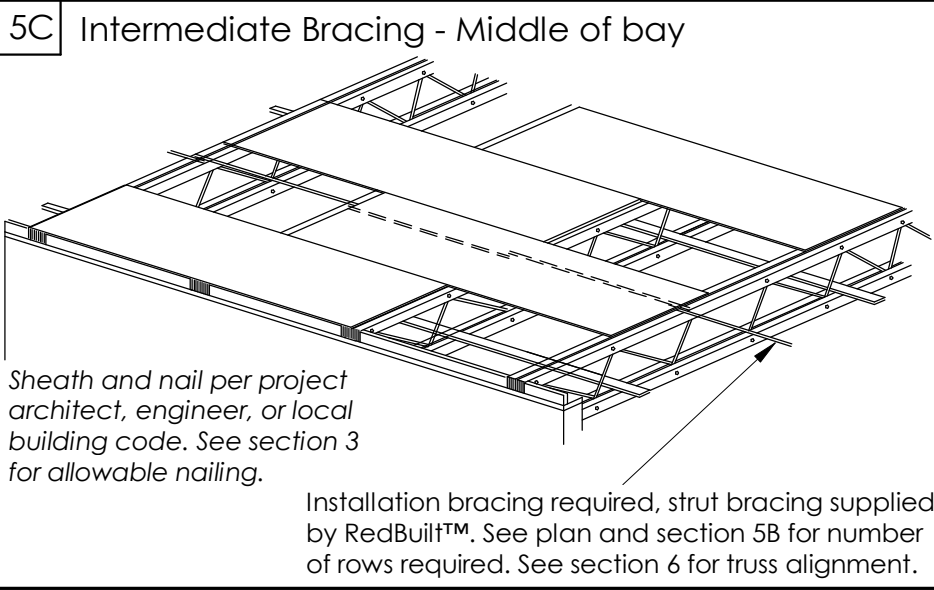
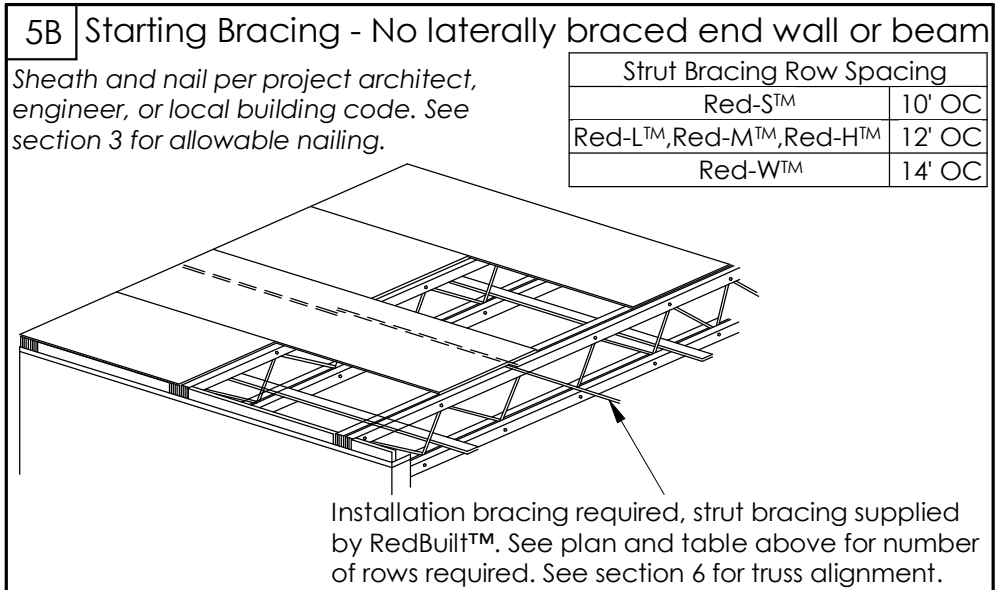
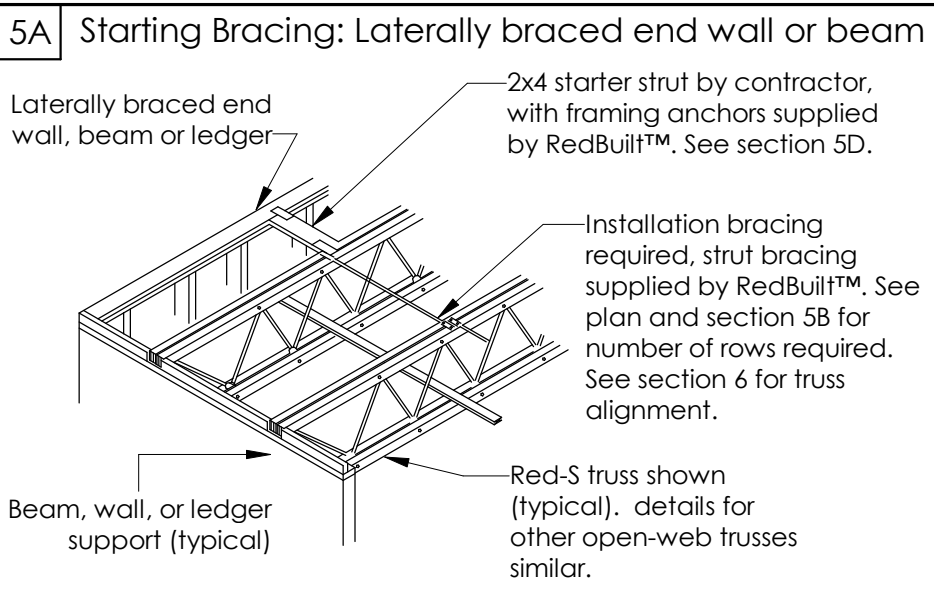
WARNING
Without correctly installed bracing, trusses can bow and roll over, causing death, serious personal injury, or property damage.

NOTICE
Installation bracing and procedures, as well as the safety of workers, are the responsibility of the installer. The installer should make sure that this installation information is understood by all persons involved in the truss installation.

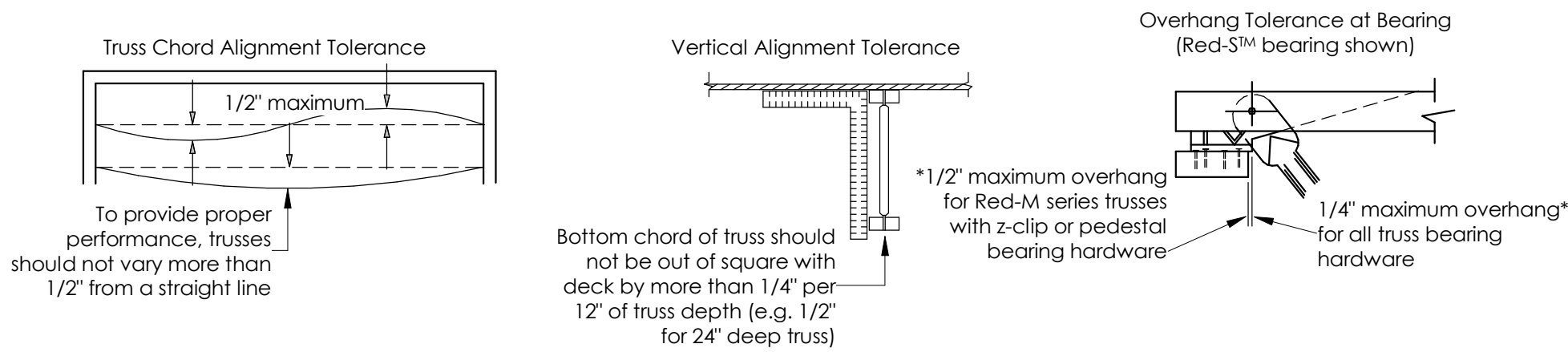


DO NOT stack building materials on trusses before all truss bearings and bracing have been permanently attached. See section 7

Brace EACH truss as it is placed

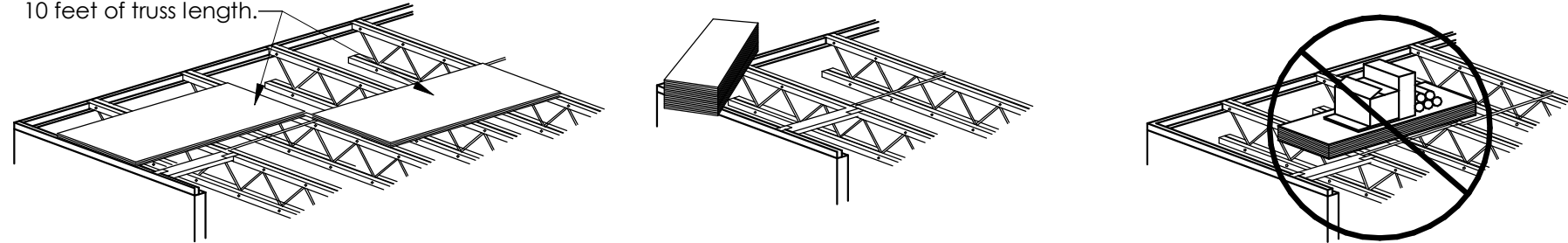


6 INSTALLATION TOLERANCES PERMITTED



7 STACKING MATERIAL

CAUTION: Maximum of 3 sheets of sheathing per 10 feet of truss length.



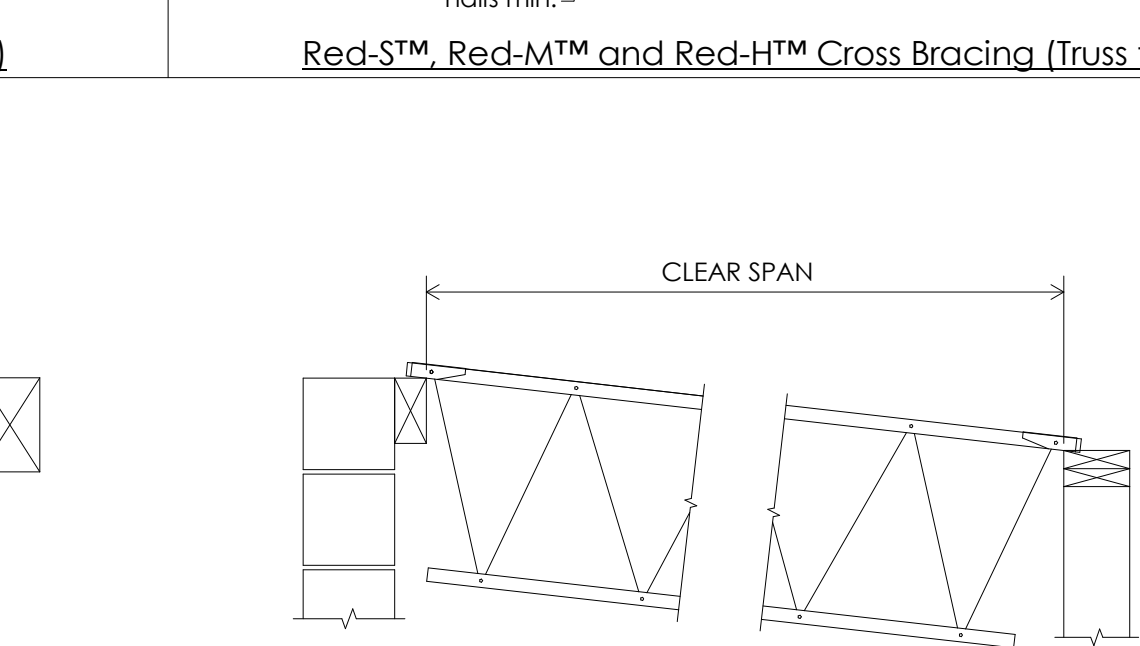
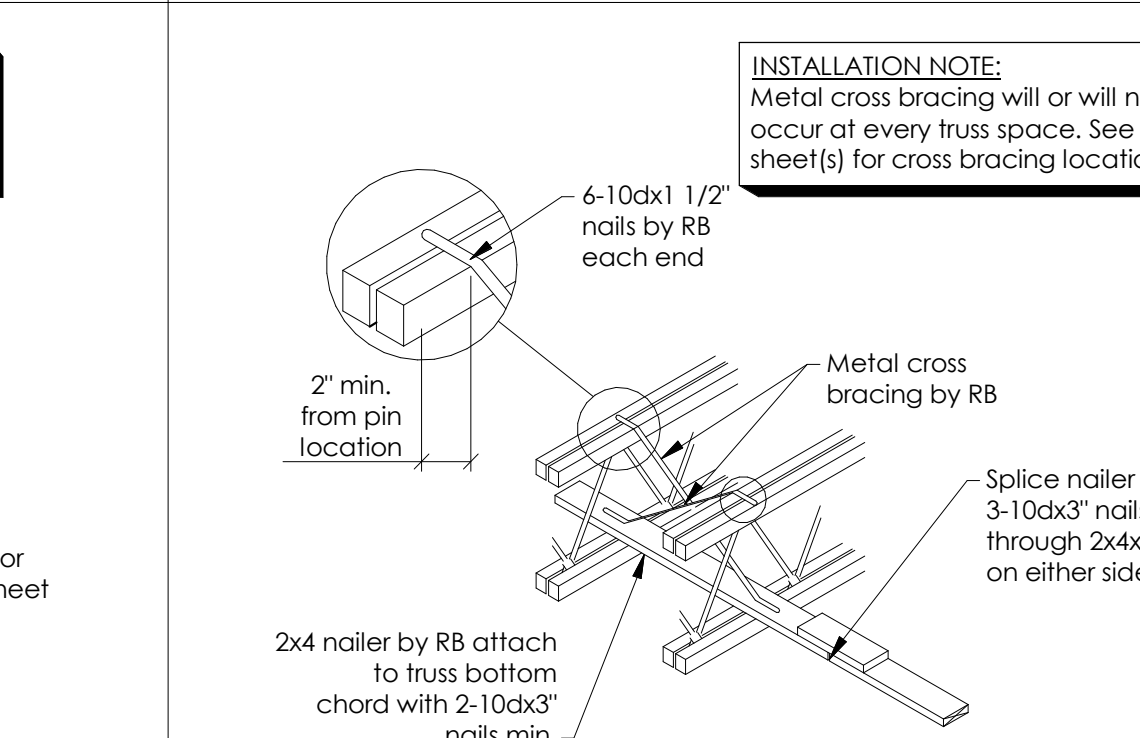
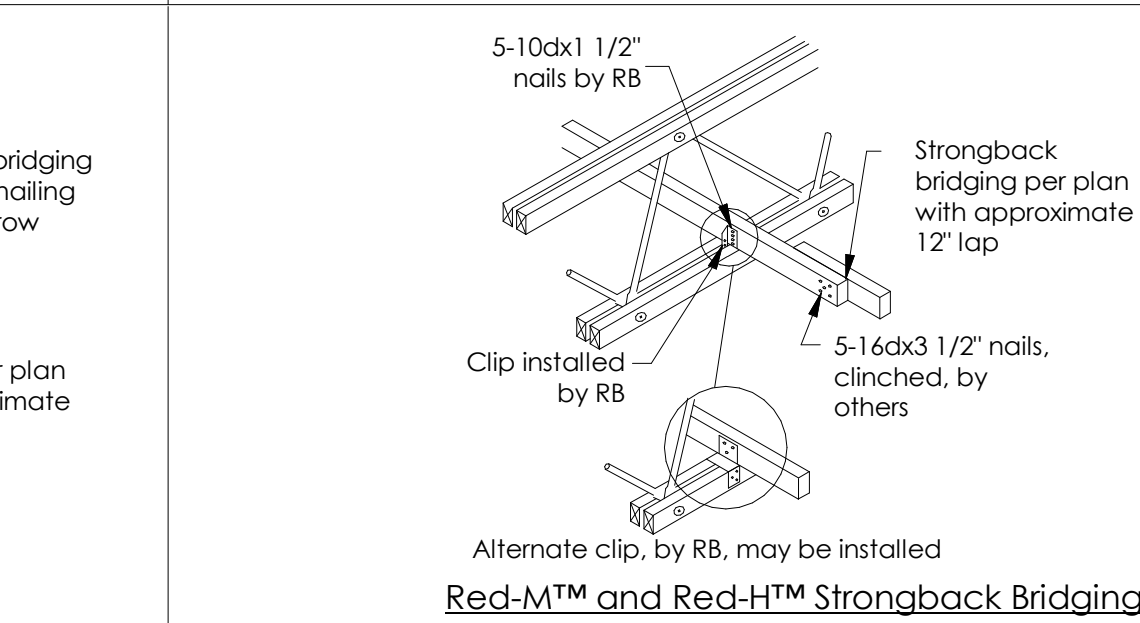
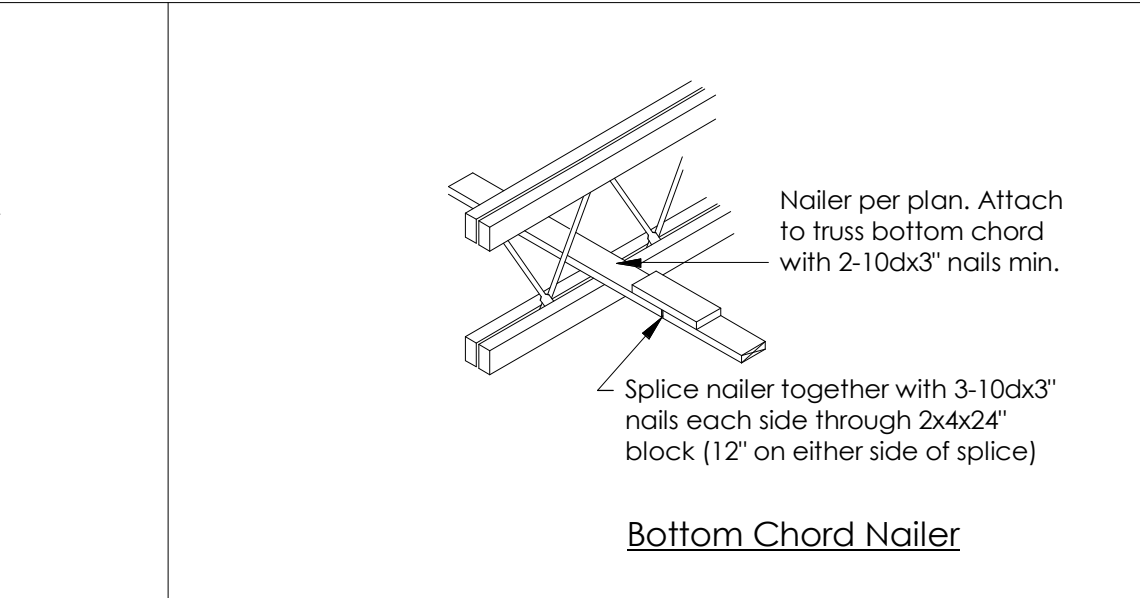
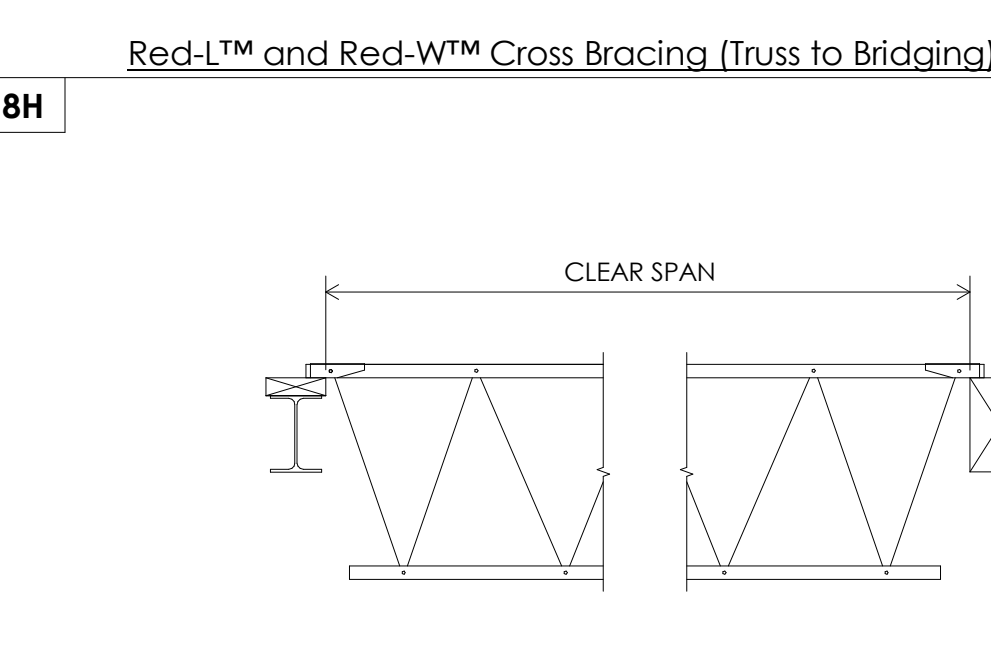
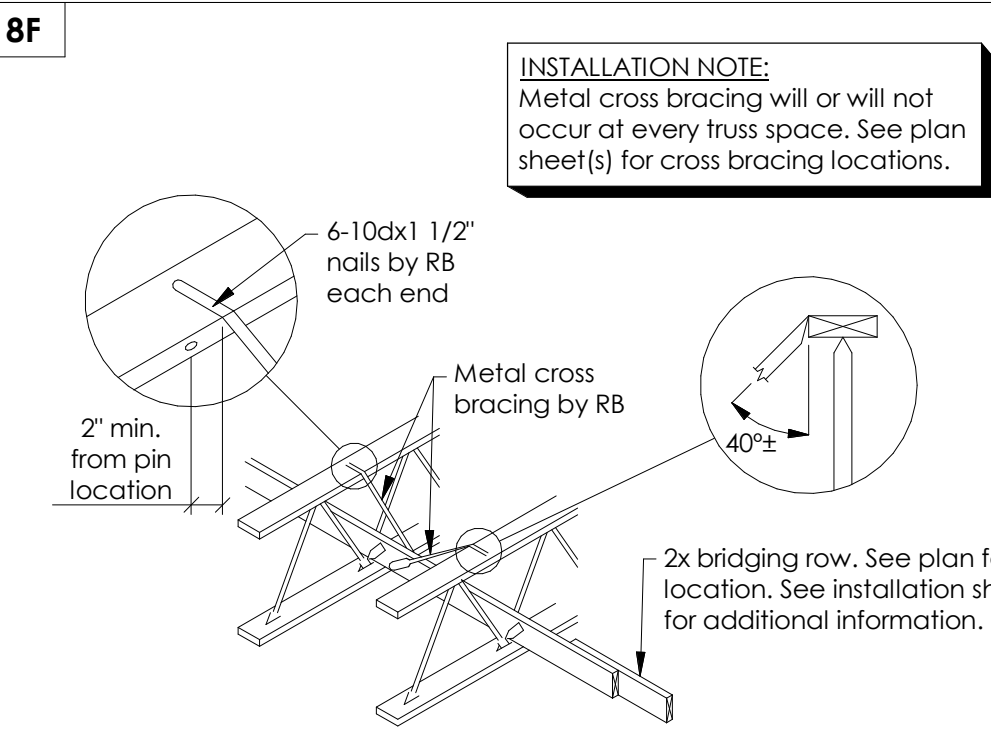
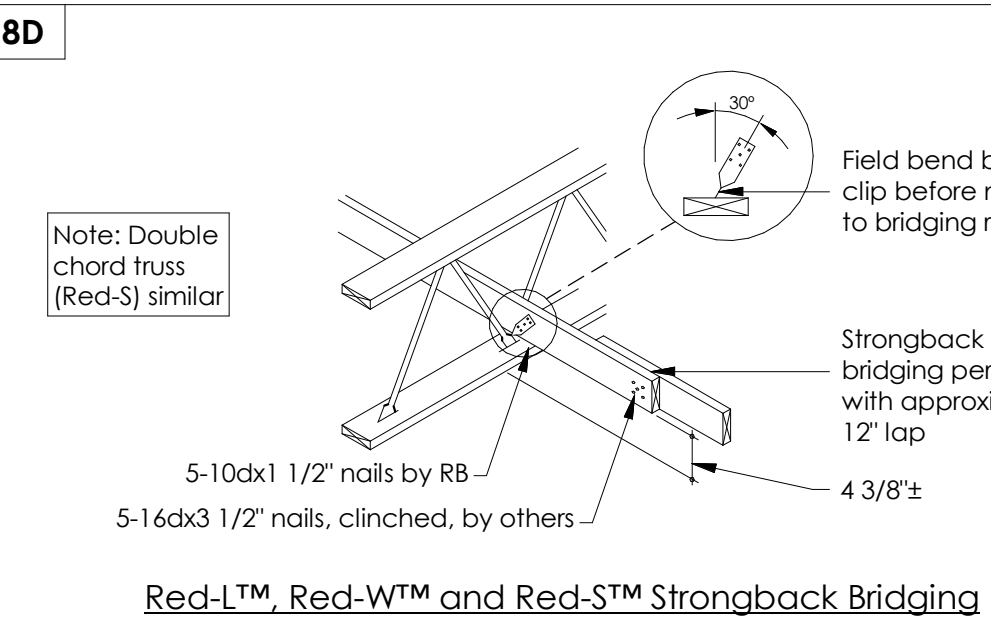
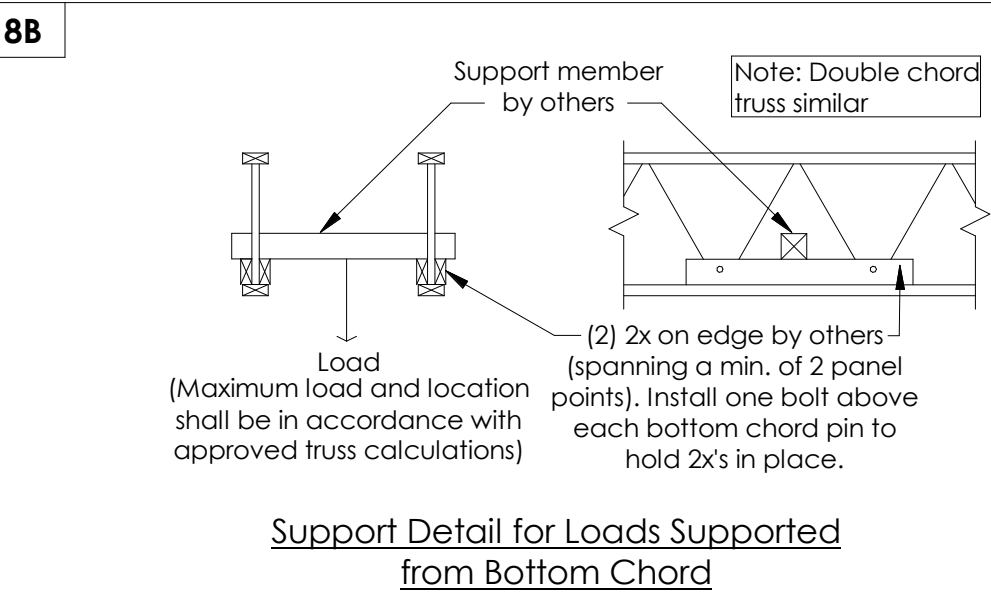
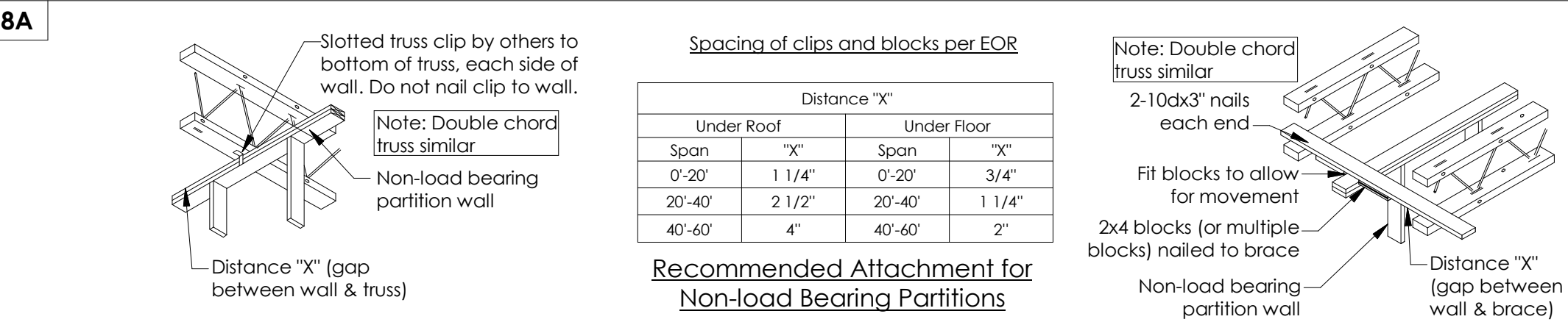
THIS

NOT THIS

FIELD MODIFICATION OF TRUSSES NOT PERMITTED

- DO NOT cut, drill or damage the chords or webs.
- DO NOT remove steel pins or webs (even temporarily).
- DO NOT make field modifications to trusses without written approval of RedBuilt™.

8 STANDARD INSTALLATION DETAILS



Guidelines for Open Web "Clear Spans"

NOT REVIEWED BY CDA



For allowable holes and fasteners information please scan the QR code or use the link below to access page number 3 of **SPRINKLER SYSTEM INSTALLATION GUIDE**

<https://www.redbuilt.com/SprinklerSystemInstallationGuide>



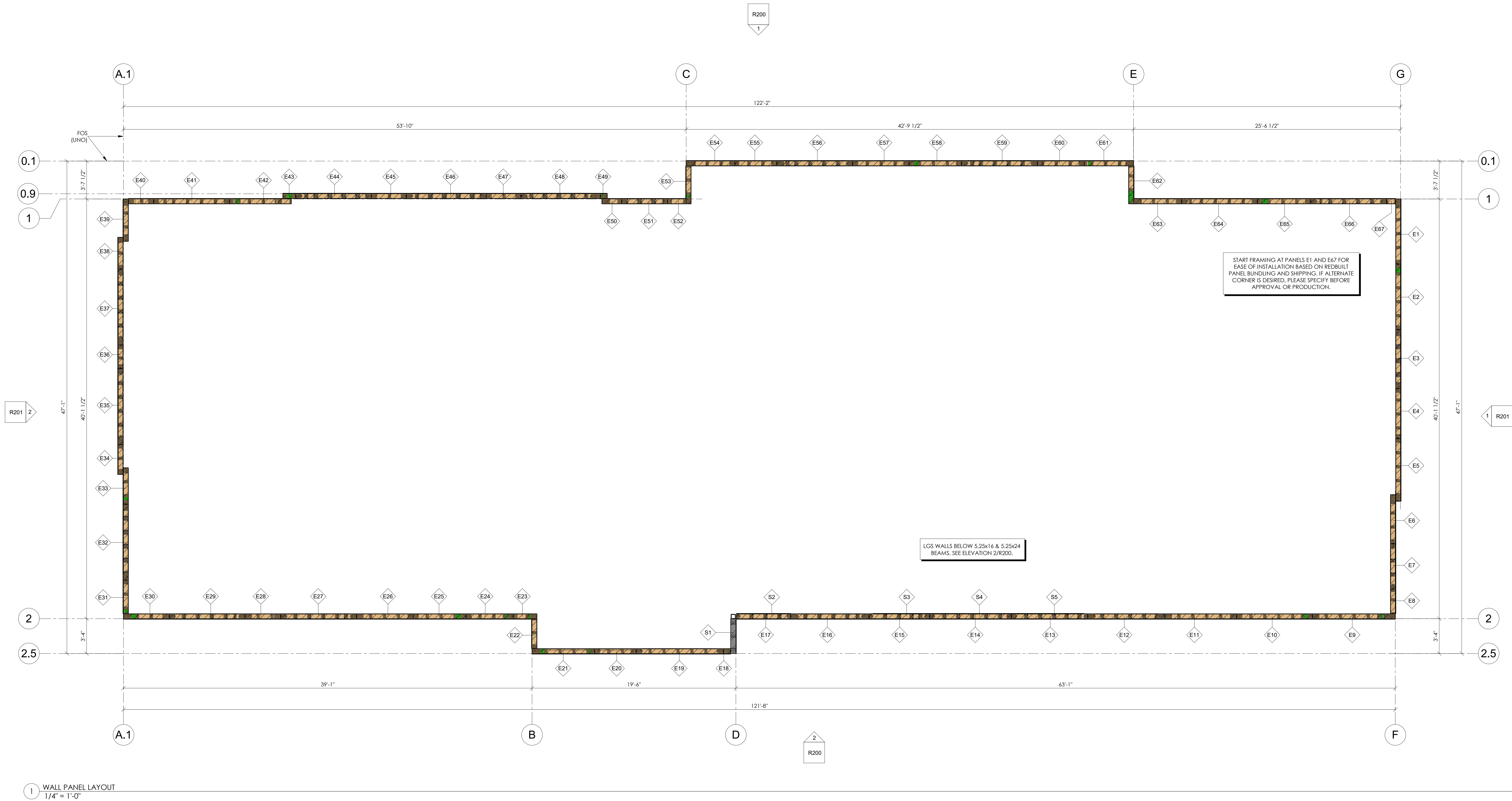
For product warranty information please scan the QR code or use the link below to access the form

<https://www.redbuilt.com/ProductWarranty>

If you have questions or concerns:
Call your RedBuilt™ Representative directly, or for general customer service call (866) 859-6757

Sheet R001

RedBuilt, LLC 9/17/2025 12:50:07 PM C:\Users\joshua\OneDrive\RedBuilt\142840\Drawings\142840-Wall-Layout.dwg User: joshua Date: 9/17/25
RedBuilt, LLC 9/17/2025 12:50:07 PM C:\Users\joshua\OneDrive\RedBuilt\142840\Drawings\142840-Wall-Layout.dwg User: joshua Date: 9/17/25



Loose Top Plate Material				
Type	Length			
2x4	16 LF			
2x6	656 LF			
2x8	80 LF			
2x8	48 LF			

Loose Wall Sheathing				
Quantity	Description	Length	Width	Total Area
104	1/2" Huber Zip OSB	8'-0"	4'-0"	3264 SQF

OUT FOR APPROVAL - NOT FOR PRODUCTION

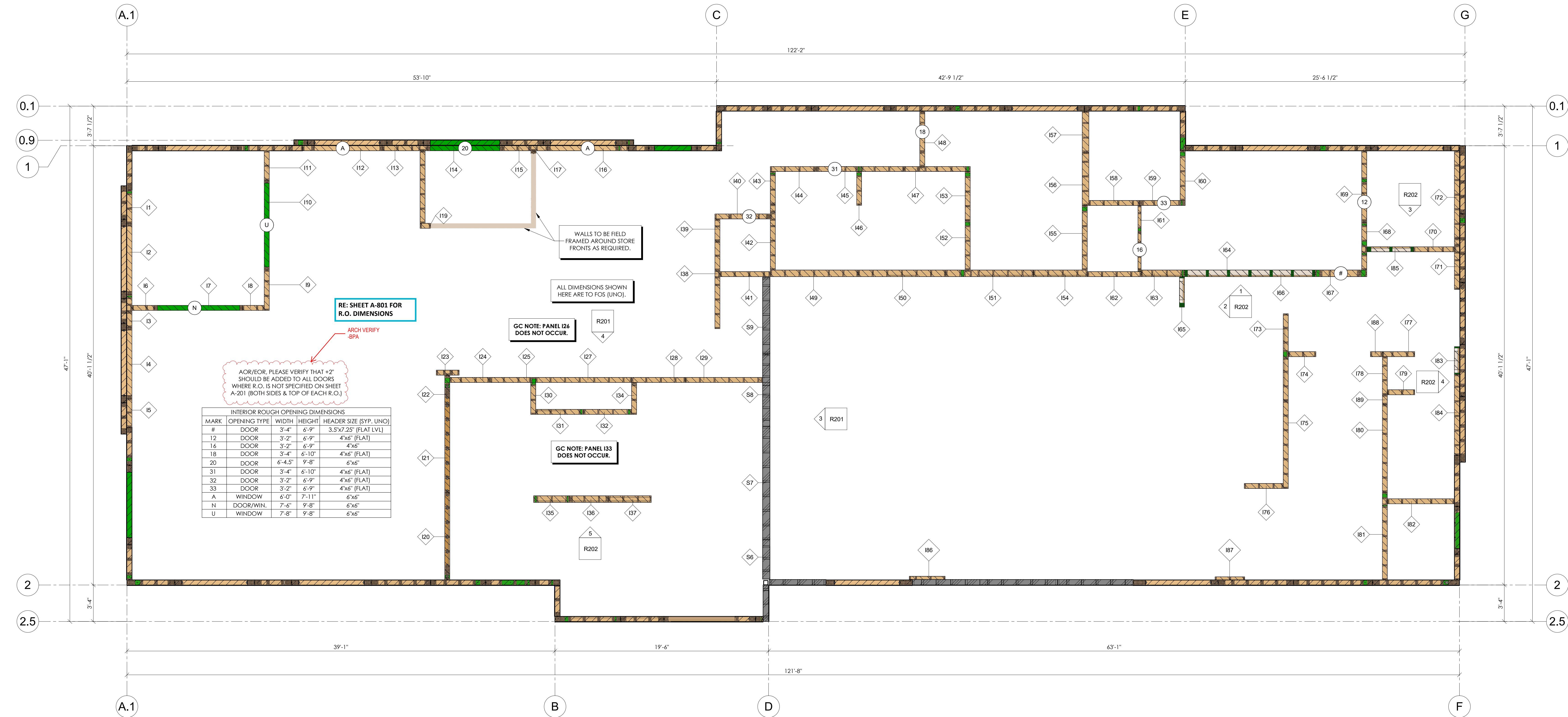


PROJECT: Chick-fil-A #5248
LOCATION: 1025 SW Jefferson Street
LEE'S SUMMIT, MO 64081

#	by	Description	Date

DRAWN BY: ARS DATE: 9/17/25
CHKD BY: JBL DATE: 9/17/25
REDBUILT PROJECT # 142840
SHEET NAME: WALL PANEL LAYOUT
SHEET # R101

RedBuilt, LLC 9/17/2021 12:50:07 PM C:\Users\joshua\OneDrive\RedBuilt\RedBuilt\142840\142840-1A-1.dwg User: joshua Date: 9/17/2021 Time: 12:50:07 PM



1 INTERIOR WALL PANEL LAYOUT
1/4" = 1'-0"

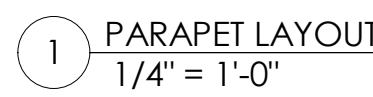
OUT FOR APPROVAL - NOT FOR PRODUCTION



PROJECT: Chick-fil-A #5248
LOCATION: 1025 SW Jefferson Street
LEES SUMMIT, MO 64081

#	by	Description	Date
		Revisions	
1			

DRAWN BY: ARS DATE: 9/17/25
CHKD BY: JBL DATE: 9/17/25
RED BUILT PROJECT # 142840
SHEET NAME: INTERIOR WALL LAYOUT (TAGS)
SHEET # R102.1



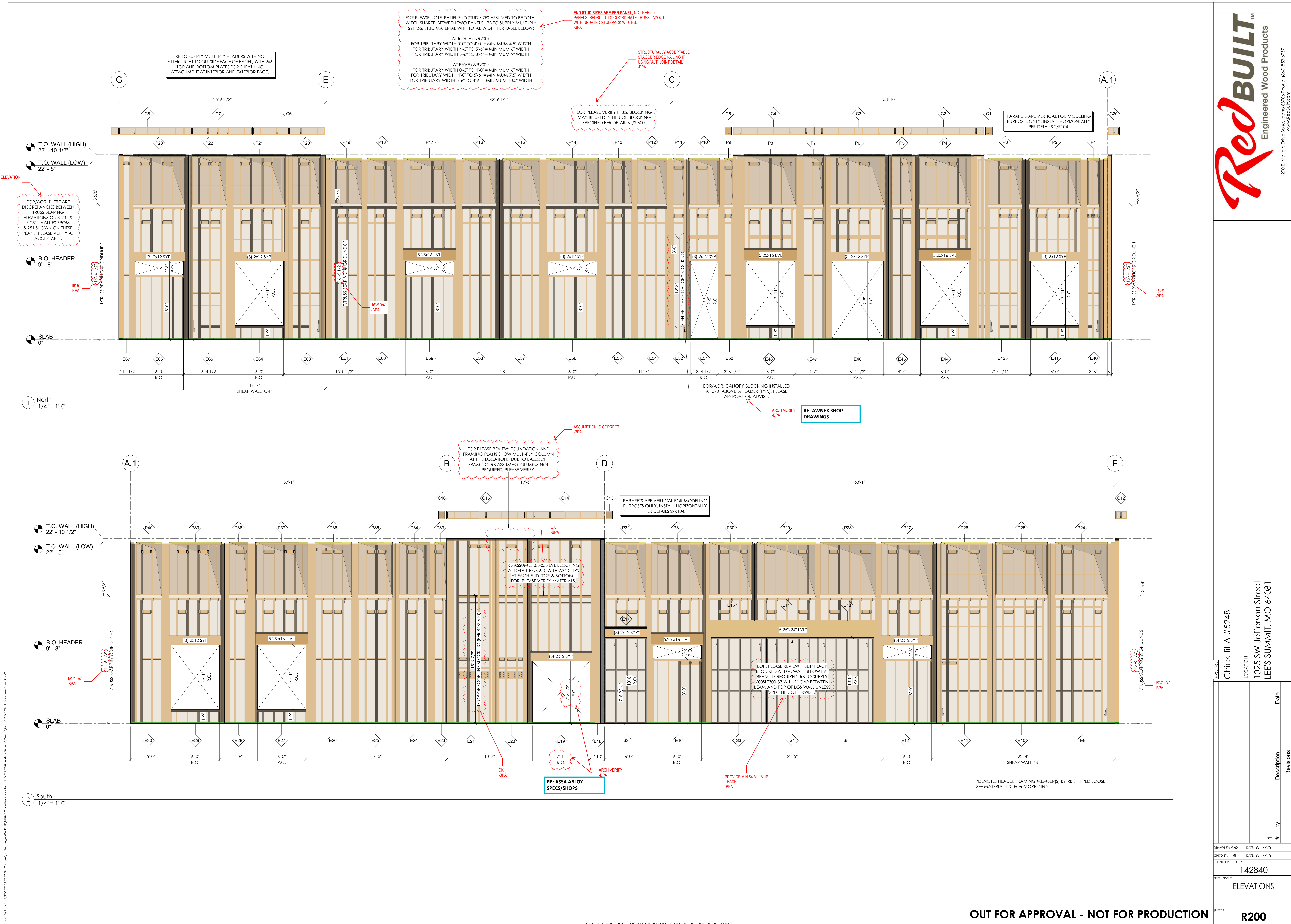
Red **BUILT™**
Engineered Wood Products

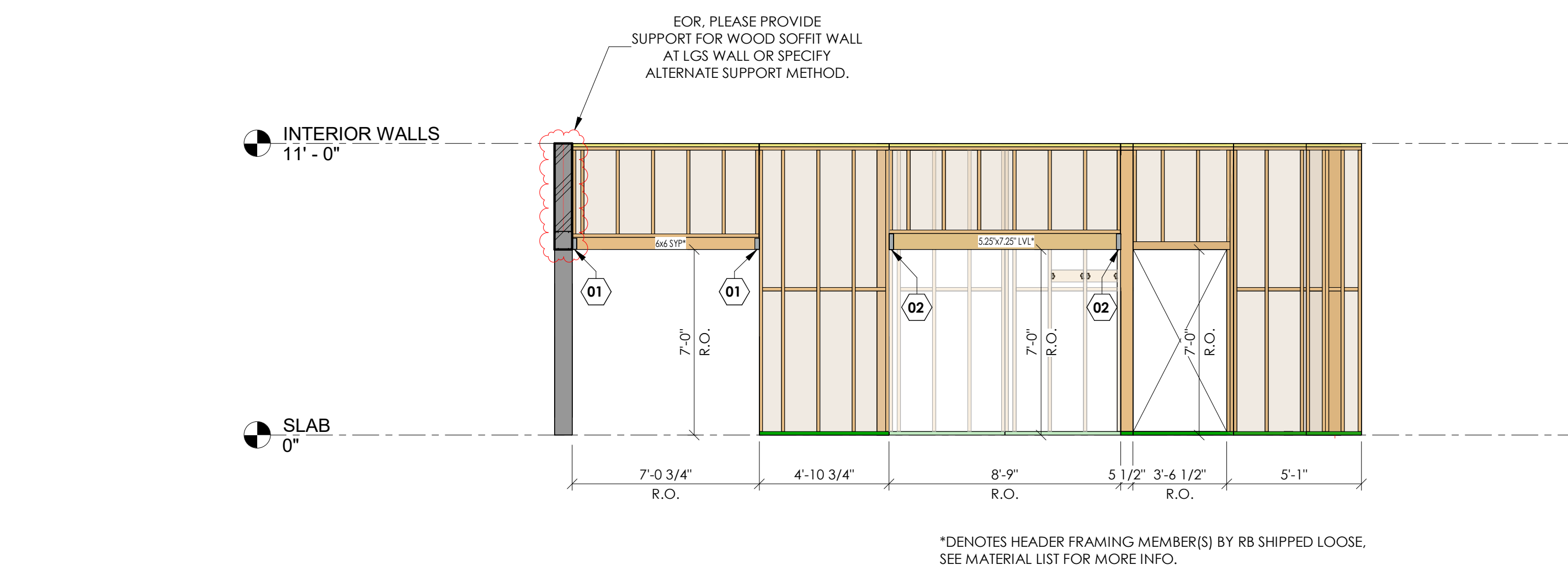
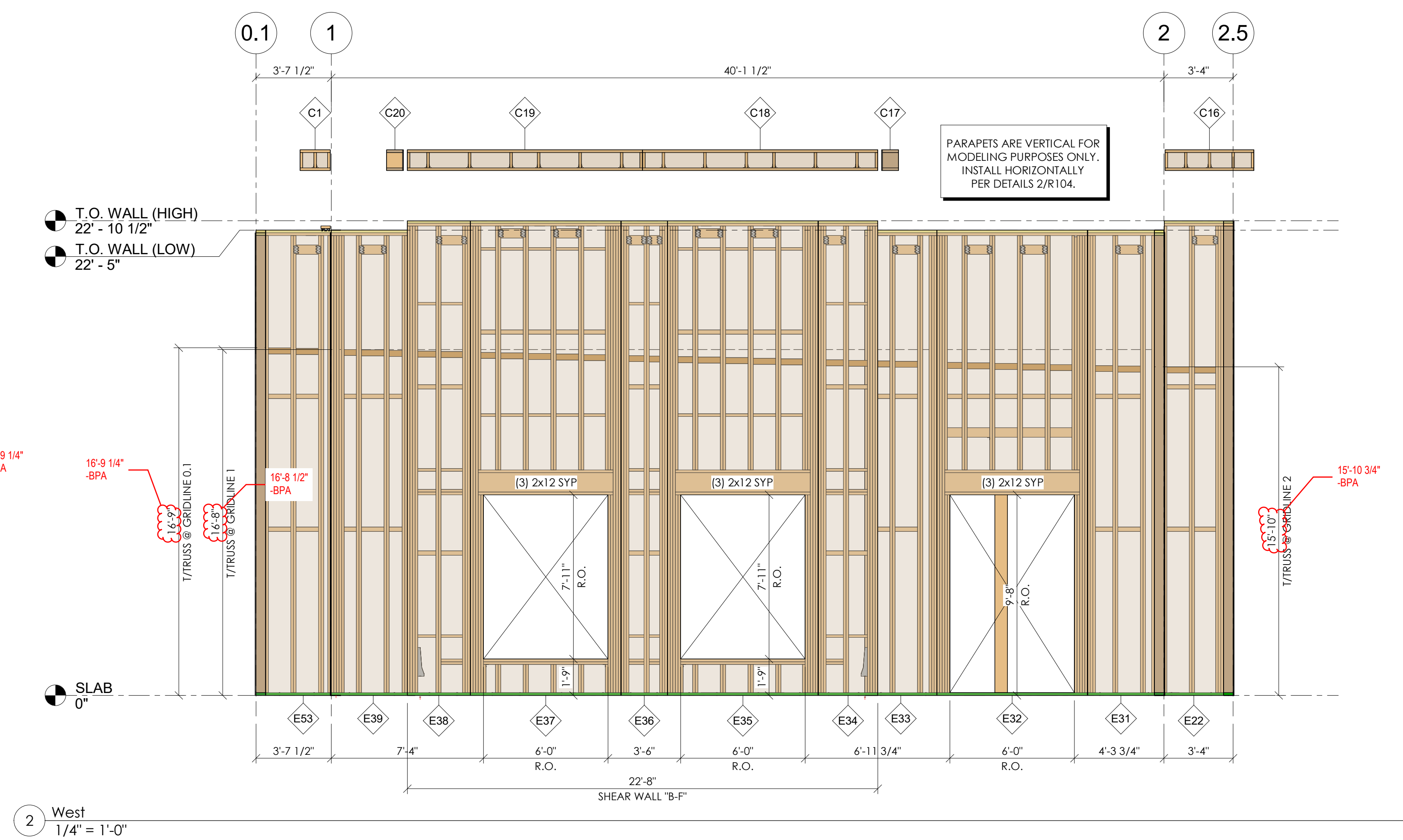
200 E. Midland Drive Boise, Idaho 83724 Phone: (866) 839-6737
www.redbuilt.com

DRAWN BY: ARS	DATE: 9/17/25
CHECKED BY: JBL	DATE: 9/17/25
REDBUILT PROJECT #	
142840	
SHEET NAME:	
PARAPET WALL LAYOUT	
SHEET #	
R103	

R103

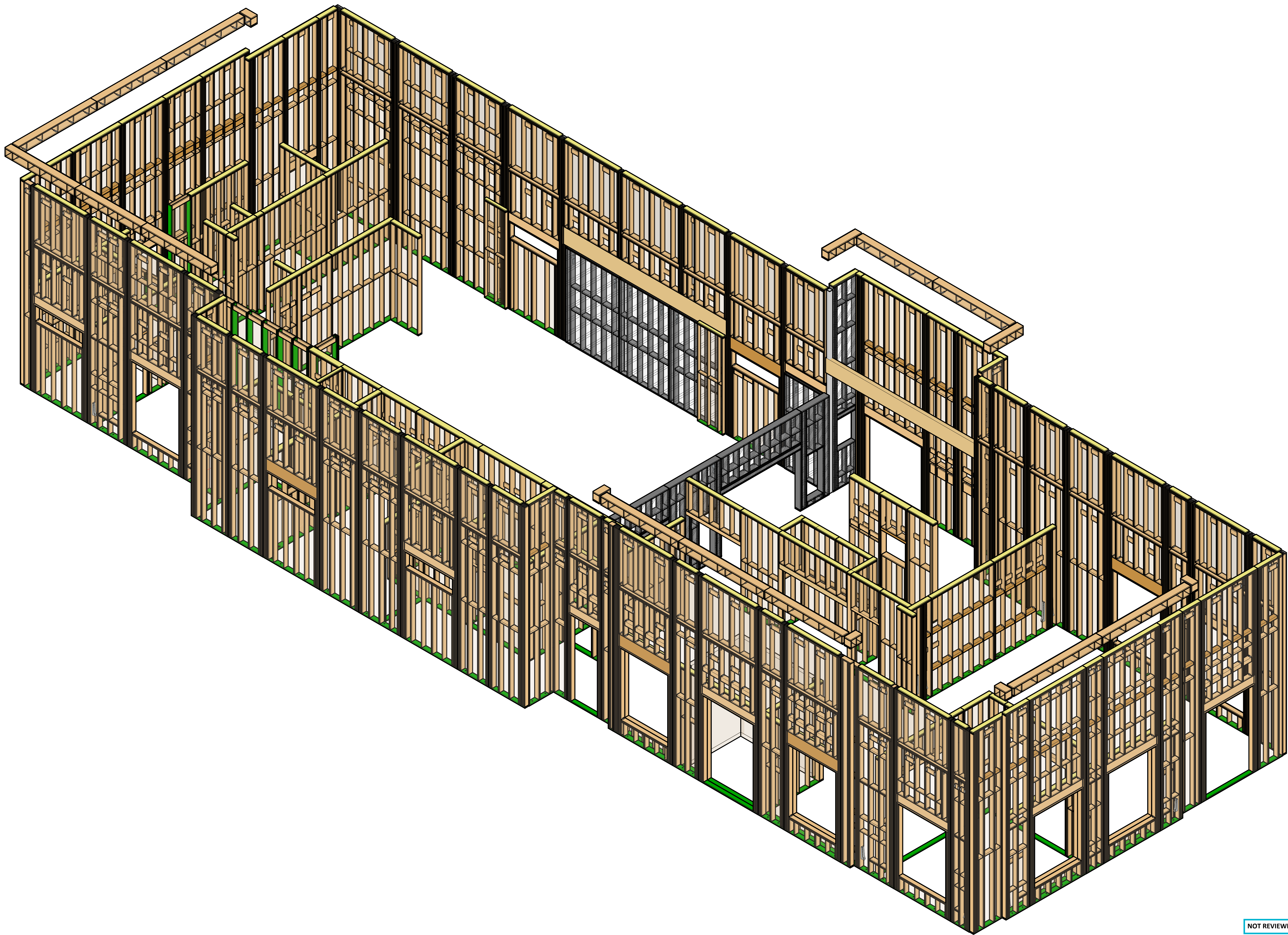
Red-ITM, Red-145TM, Red-145LTM, Red-158TM, Red-165TM, Red-190TM, Red-190HTM, Red-190HSTM, Red-LTM, Red-WTM, Red-STM, Red-MTM, Red-HTM, RedLamTM are trademarks of RedBuilt, LLC.





FOR, PLEASE REVIEW AND
APPROVE HANGERS FOR
LOOSE HEADER ATTACHMENT
AS SHOWN, OR ADVISE.

Red-IT[™], Red-I45[™], Red-I45L[™], Red-I58[™], Red-I65[™], Red-I90[™], Red-I90H[™], Red-I90HS[™], Red-L[™], Red-W[™], Red-S[™], Red-M[™], Red-H[™], RedLam[™] are trademarks of RedBuil, LLC



NOT REVIEWED BY CDA

RedBuilt, LLC - 9/17/2025 12:53:27 PM - C:\Users\joshua\OneDrive\RedBuilt\142840\Drawings\142840-ISO-View.dwg - General (Design/Draw) / 08/17/25 8:4 - Lee's Summit, MO

Red-I™, Red-I45™, Red-I45L™, Red-I58™, Red-I65™, Red-I90™, Red-I90H™, Red-I90H5™, Red-L™, Red-W™, Red-S™, Red-M™, Red-H™, RedLam™ are trademarks of RedBuilt, LLC.

—THINK SAFETY -READ INSTALLATION INFORMATION BEFORE PROCEEDING—

OUT FOR APPROVAL - NOT FOR PRODUCTION

#	by	Description	Revisions	
			Date	

DRAWN BY: ARS	DATE: 9/17/25
CHKD BY: JBL	DATE: 9/17/25
RED BUILT PROJECT #	142840
SHEET NAME:	ISO VIEW
SHEET #	R404

PROJECT
Chick-fil-A #5248
LOCATION
1025 SW Jefferson Street
LEE'S SUMMIT, MO 64081