

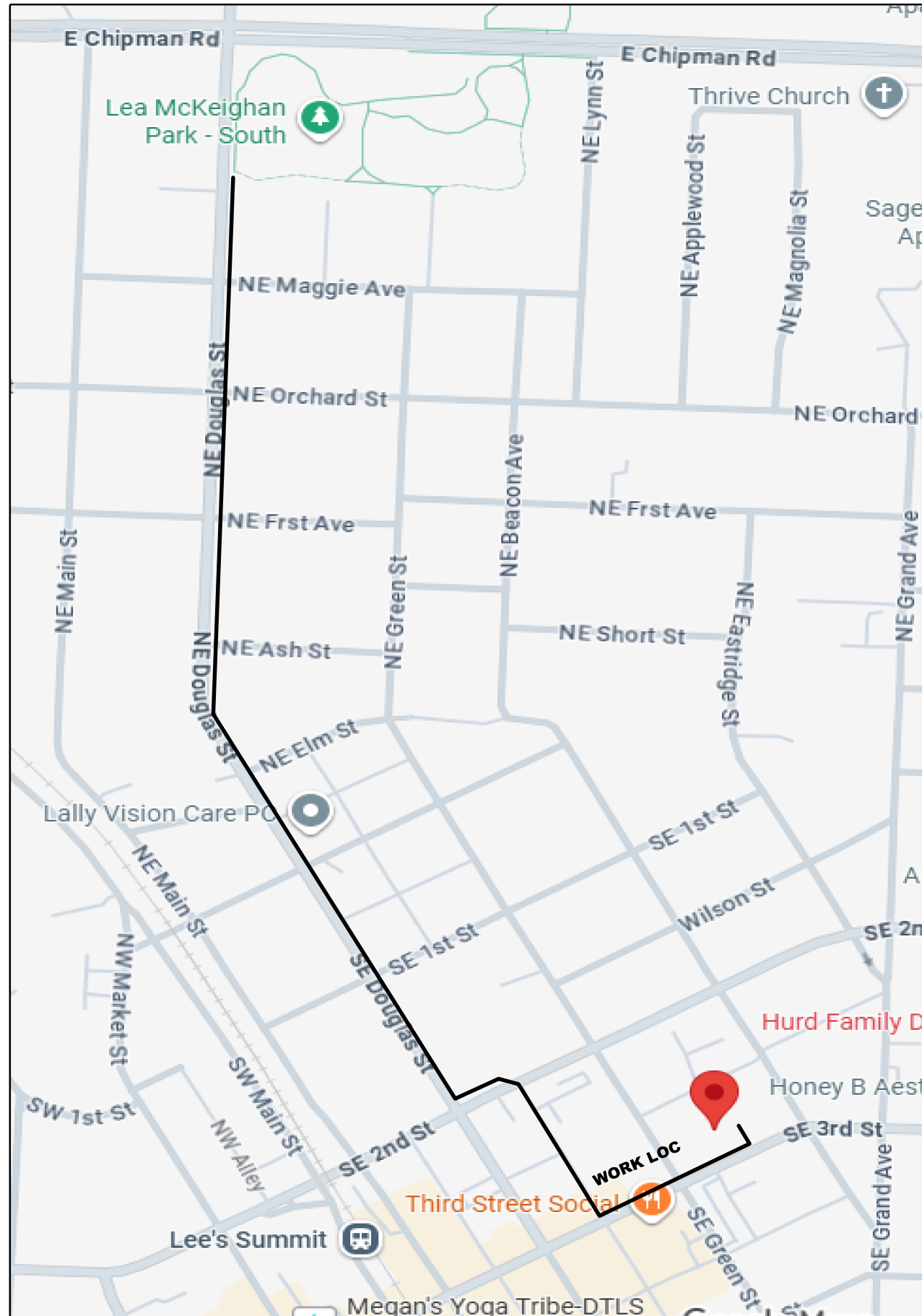
**LEE'S SUMMIT PERMIT REQUIRED**

- CONSTRUCTION NOTES:**
1. CALL LOCATOR 48 HOURS BEFORE DIGGING.
  2. RESTORE ALL DISTURBED GROUND TO ORIGINAL OR BETTER CONDITION.
  3. PROVIDE ALL BARRICADES AND WORK PROTECTION.
  4. REMOVE ALL DEBRIS.
  5. ALL PROPOSED WORK IN THE EXISTING PUBLIC RIGHT OF WAY OR UTILITY EASEMENT.

BEFORE YOU DIG!  
2 DAYS PRIOR  
CALL 811

1 85C  
1 READY

ATT JOBS =  
A058ACY  
A05AF55  
THIS JOB  
ALL COME OUT OF LEE'S SUMMIT CO  
AND GOES WEST.  
LETS COORDINATE ON THE PATH.



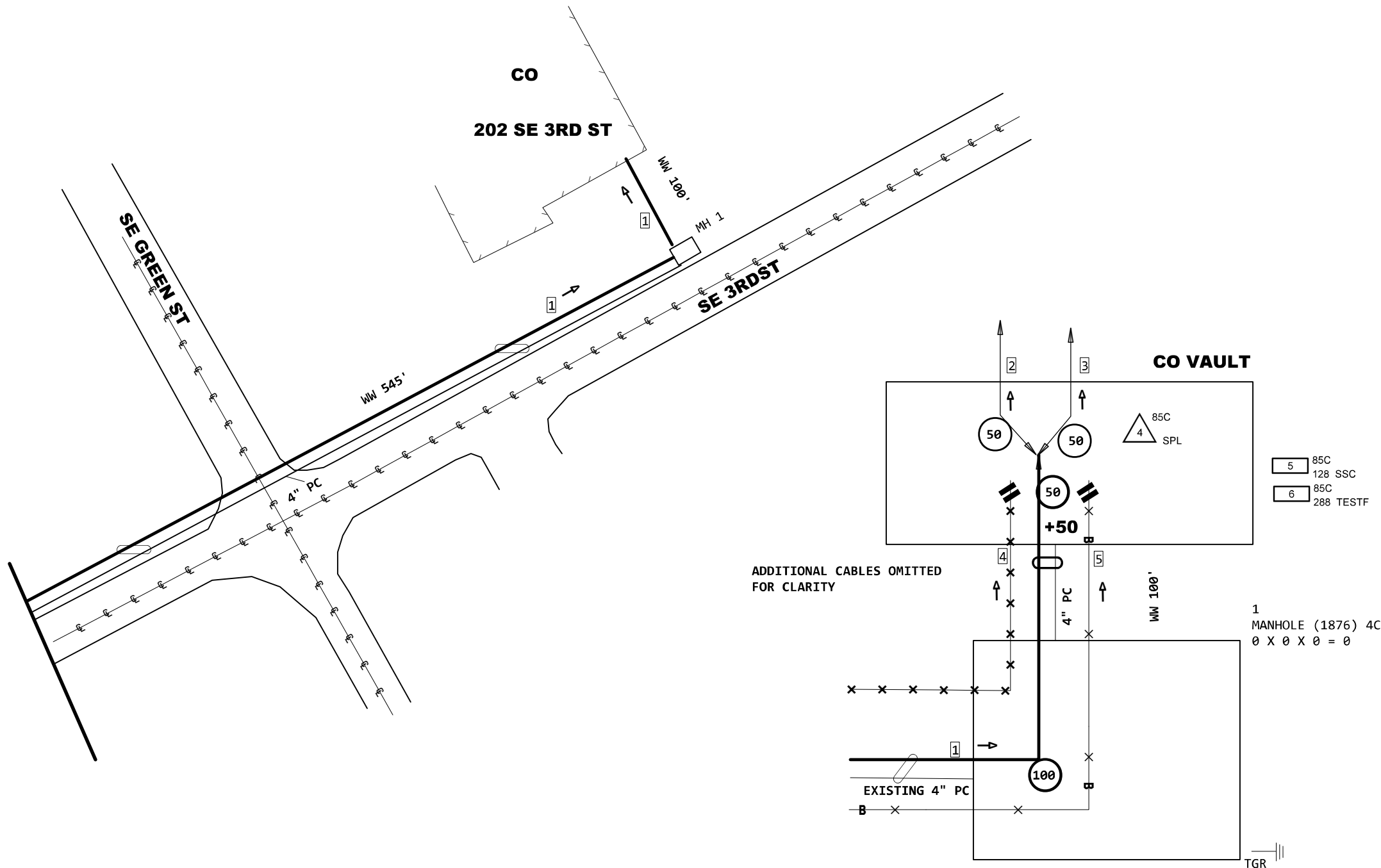
ADB COMPANIES  
STEVE HUNT  
513-497-0984

PROJECT # <b>A05BKG4</b>		DATE SVC REQ'D 01/30/2026
NPANNX 816524	GEO LOC EE4160	CLLI KSCYMO41
PRIMARY ENGR.: BUSHART, TIMOTHY		
ENGR. ID: TB2697	PERMIT REQ'D.	Y
PHONE #: 8168032608	PRINT 1	OF 13

**PLACE NEW CABLE  
IN EXISTING 4" PC**

- CONSTRUCTION NOTES:**
1. CALL LOCATOR 48 HOURS BEFORE DIGGING.
  2. RESTORE ALL DISTURBED GROUND TO ORIGINAL OR BETTER CONDITION.
  3. PROVIDE ALL BARRICADES AND WORK PROTECTION.
  4. REMOVE ALL DEBRIS.
  5. ALL PROPOSED WORK IN THE EXISTING PUBLIC RIGHT OF WAY OR UTILITY EASEMENT.

BEFORE YOU DIG!  
2 DAYS PRIOR  
CALL 811



- 1 85C  
5BQ2MR-864  
895 IDUC  
(PPA) 85C 895'  
5BQ2MR-864  
L2005,1-72  
L2RA001,1-216  
A,289-864
- 2 (1996) 85C 0'  
AT-34T2MT-072  
L2005,1-72
- 3 (2002) 845C 0'  
3BQ2MT-216  
L2RA001,1-216
- 4 85X  
AT-34T2MT-072  
799 REMO  
(1996) 85X 799'  
AT-34T2MT-072  
L2005,1-72
- 5 845X  
3BQ2MT-216  
9920 REMO  
(2002) 845X 9920'  
3BQ2MT-216  
L2RA001,1-216

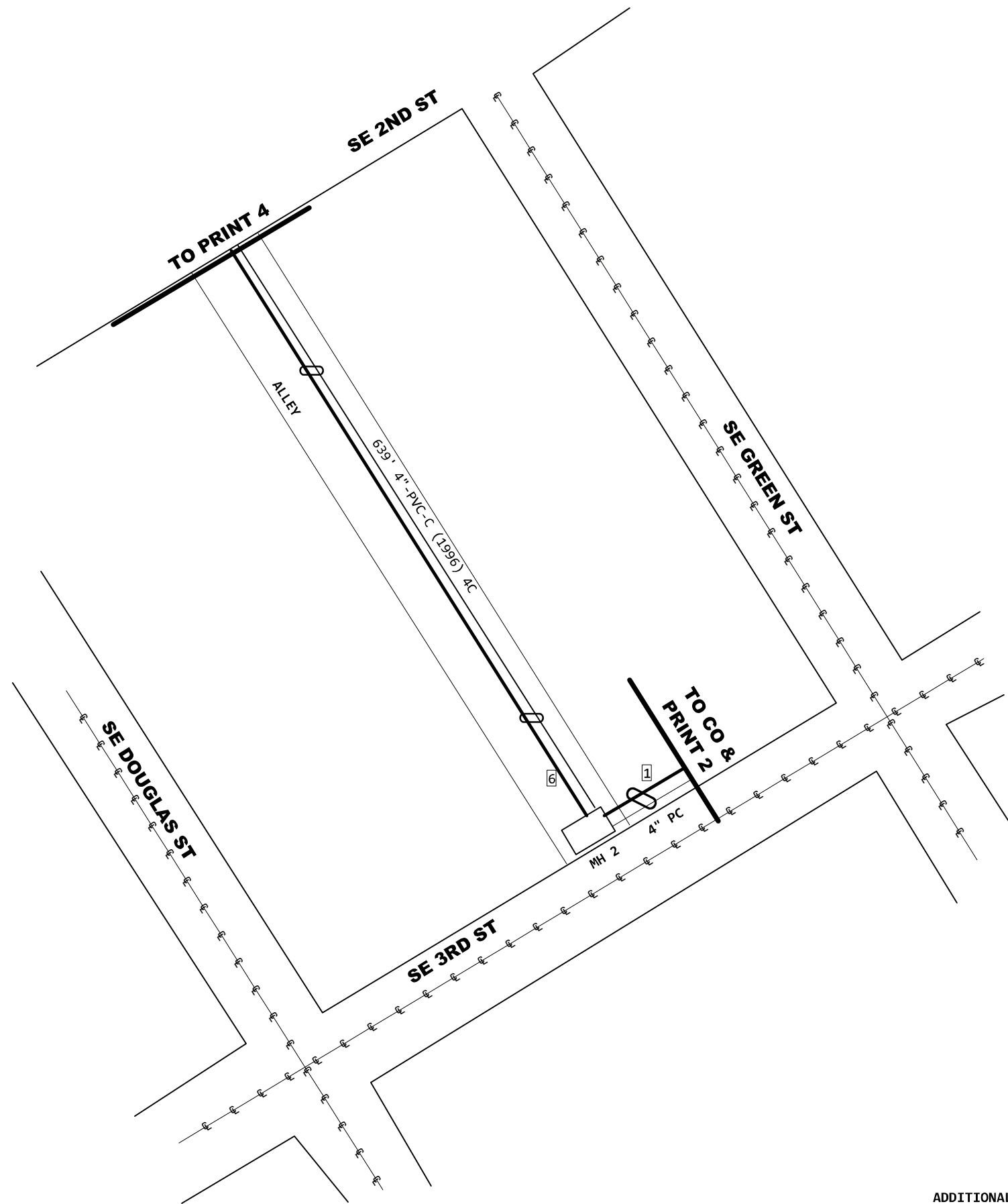
PROJECT # <b>A05BKG4</b>		DATE SVC REQ'D 01/30/2026	
NPANNX 816524	GEO LOC EE4160	CLLI KSCYMO41	
PRIMARY ENGR.: BUSHART, TIMOTHY			
ENGR. ID: TB2697		PERMIT REQ'D.	Y
PHONE #: 8168032608		PRINT 2 OF 13	



**PLACE NEW CABLE  
IN EXISTING 4" PC**

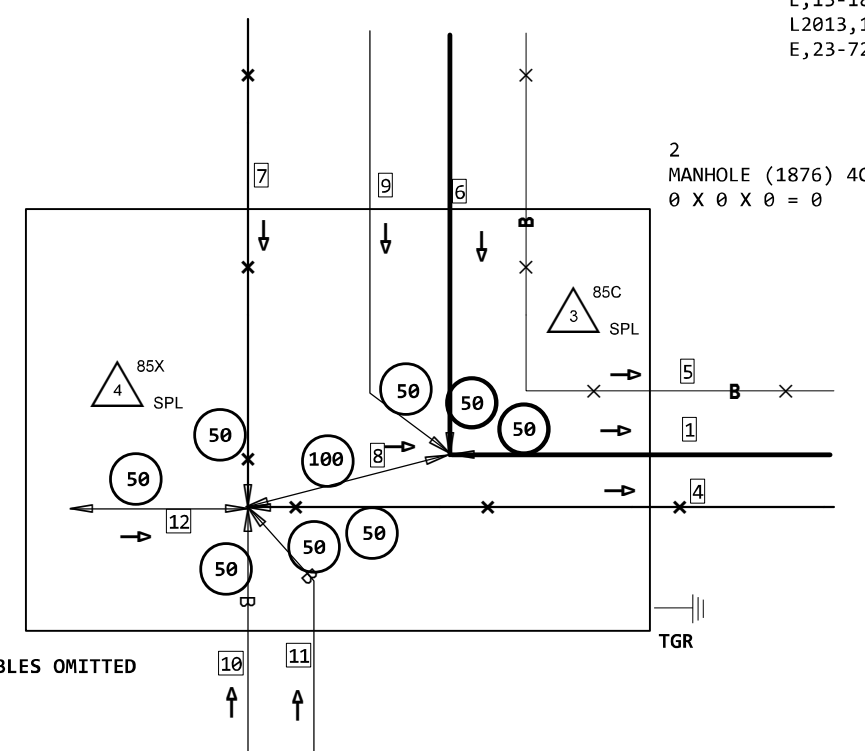
- CONSTRUCTION NOTES:**
1. CALL LOCATOR 48 HOURS BEFORE DIGGING.
  2. RESTORE ALL DISTURBED GROUND TO ORIGINAL OR BETTER CONDITION.
  3. PROVIDE ALL BARRICADES AND WORK PROTECTION.
  4. REMOVE ALL DEBRIS.
  5. ALL PROPOSED WORK IN THE EXISTING PUBLIC RIGHT OF WAY OR UTILITY EASEMENT.

BEFORE YOU DIG!  
2 DAYS PRIOR  
CALL 811



- 8 (2022) 85C 150'  
5BQ2MT-072
- (L2005,49-52) <A05BKG4> L2005,57-60  
(C,5-8) <A05BKG4> L2005,63-66  
C,9-72 NC
- 9 (2022) 85C 365'  
5BQ2MT-024  
L2005,49-52  
A,5-24
- 10 (2006) 845C 1061'  
5BQ2MT-024  
L2013,421-422  
L2005,63-66  
L2013,423-424  
L2005,57-58  
L2013,425-432  
L2013,139-142  
A,23-24
- 11 (2005) 845C 2252'  
5BQ2MT-024  
A,1-18  
B,19-20  
L2005,59-60  
B,23-24
- 12 (2018) 85C 110'  
5B92MT-072  
<A02P8KD> L2013,421-432  
E,13-18  
L2013,139-142  
E,23-72

- PRINT 2  
1 (PPA) 85C 895'  
5BQ2MR-864  
L2005,1-72  
L2RA001,1-216  
A,289-864
- PRINT 2  
4 (1996) 85X 0'  
AT-34T2MT-072  
L2005,1-72
- PRINT 2  
5 (2002) 845X 0'  
3BQ2MT-216  
L2RA001,1-216
- 85C  
1 5BQ2MR-864  
739 IDUC
- 6 (PPA) 85C 739'  
5BQ2MR-864  
L2005,1-48  
D,49-52  
L2005,53-56  
A,57-60  
L2005,61-62  
A,63-66  
L2005,67-72  
L2RA001,1-216  
A,289-864
- 85X  
2 AT-34T2MT-072  
4987 ABAN
- 7 (1996) 85X 4987'  
AT-34T2MT-072  
L2005,1-48  
D,49-52  
L2005,53-56  
A,57-58  
L2005,59-62  
A,63-66  
L2005,67-72



ADDITIONAL CABLES OMITTED  
FOR CLARITY

PROJECT # <b>A05BKG4</b>		DATE SVC REQ'D 01/30/2026	
NPANNX 816524	GEO LOC EE4160	CLLI KSCYMO41	
PRIMARY ENGR.: BUSHART, TIMOTHY			
ENGR. ID: TB2697		PERMIT REQ'D.	Y
PHONE #: 8168032608		PRINT 3 OF 13	

**VERIFY AND STAKE VARING R/W & EASEMENT PRIOR TO PLACEMENT**

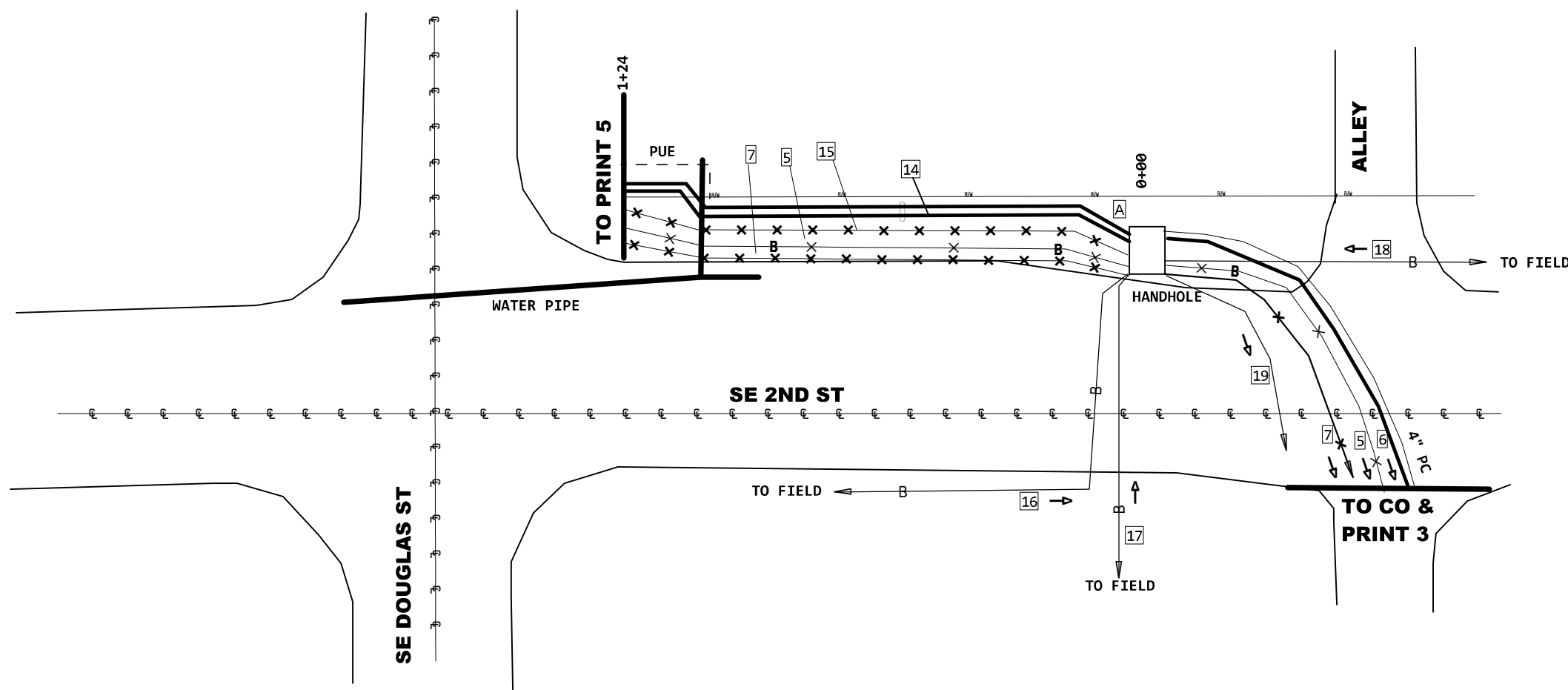
PLACE 1' OFF OF R/W OR PUE

PLACE AT 24" DEEP  
60" UNDER ROADS

4C  
3"-PVC  
2112 DBOR  
A 2112' 3"-PVC (PPA) 4C

- CONSTRUCTION NOTES:**
1. CALL LOCATOR 48 HOURS BEFORE DIGGING.
  2. RESTORE ALL DISTURBED GROUND TO ORIGINAL OR BETTER CONDITION.
  3. PROVIDE ALL BARRICADES AND WORK PROTECTION.
  4. REMOVE ALL DEBRIS.
  5. ALL PROPOSED WORK IN THE EXISTING PUBLIC RIGHT OF WAY OR UTILITY EASEMENT.

BEFORE YOU DIG!  
2 DAYS PRIOR  
CALL 811



- 18 (2006) 845C 1378'  
5BQ2MT-024  
A, 1-20  
L2007, 141-144
- 19 (2005) 85C 5245'  
5BQ2MT-144  
L2007, 1-120  
A, 121-132  
L2007, 133-144

- 14 (PPA) 85C 4298'  
5BQ2MR-432  
L2005, 1-48  
D, 49-52  
L2005, 53-56  
A, 57-60  
L2005, 61-62  
A, 63-66  
L2005, 67-72  
L2RA001, 1-216  
L2007, 1-2  
A, 3-4  
L2007, 5-108  
A, 109-110  
L2007, 111-120  
A, 121-132  
L2007, 133-140  
A, 141-144

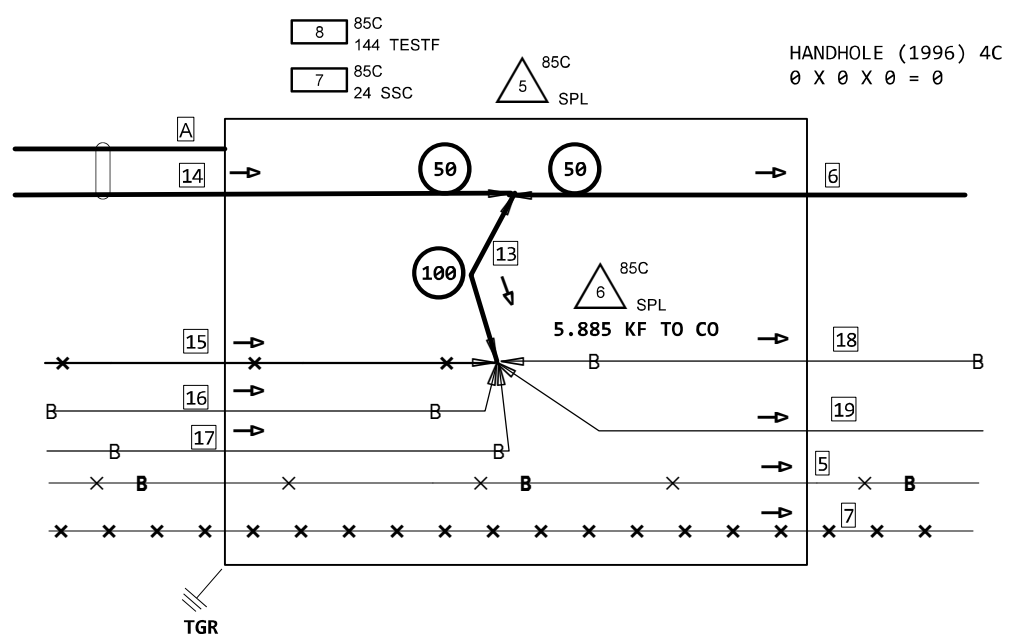
- PRINT 2
- 5 (2002) 845X 0'  
3BQ2MT-216  
L2RA001, 1-216
- PRINT 3
- 6 (PPA) 85C 0'  
5BQ2MR-864  
L2005, 1-48  
D, 49-52  
L2005, 53-56  
A, 57-60  
L2005, 61-62  
A, 63-66  
L2005, 67-72  
L2RA001, 1-216  
A, 289-864

- PRINT 3
- 7 (1996) 85X 0'  
AT-34T2MT-072  
L2005, 1-48  
D, 49-52  
L2005, 53-56  
A, 57-58  
L2005, 59-62  
A, 63-66  
L2005, 67-72

- 15 (2005) 85X 4711'  
5BQ2MT-144  
L2007, 1-2  
A, 3-4  
L2007, 5-108  
A, 109-110  
L2007, 111-120  
A, 121-132  
L2007, 133-140  
A, 141-144

- 13 (PPA) 85C 150'  
5BQ2MT-144  
L2007, 1-2  
A, 3-4  
L2007, 5-108  
A, 109-110  
L2007, 111-120  
A, 121-132  
L2007, 133-140  
A, 141-144

- 16 (2013) 845C 400'  
5BQ2MT-024  
A, 1-2  
L2007, 3-4  
A, 5-24
- 17 (2010) 845C 388'  
5BQ2MT-024  
L2007, 109-120  
B, 13-24



PROJECT # <b>A05BKG4</b>		DATE SVC REQ'D 01/30/2026	
NPANNX 816524	GEO LOC EE4160	CLLI KSCYMO41	
PRIMARY ENGR.: BUSHART, TIMOTHY			
ENGR. ID: TB2697		PERMIT REQ'D.	Y
PHONE #: 8168032608		PRINT 4 OF 13	



**VERIFY AND STAKE VARING R/W & EASEMENT PRIOR TO PLACEMENT**

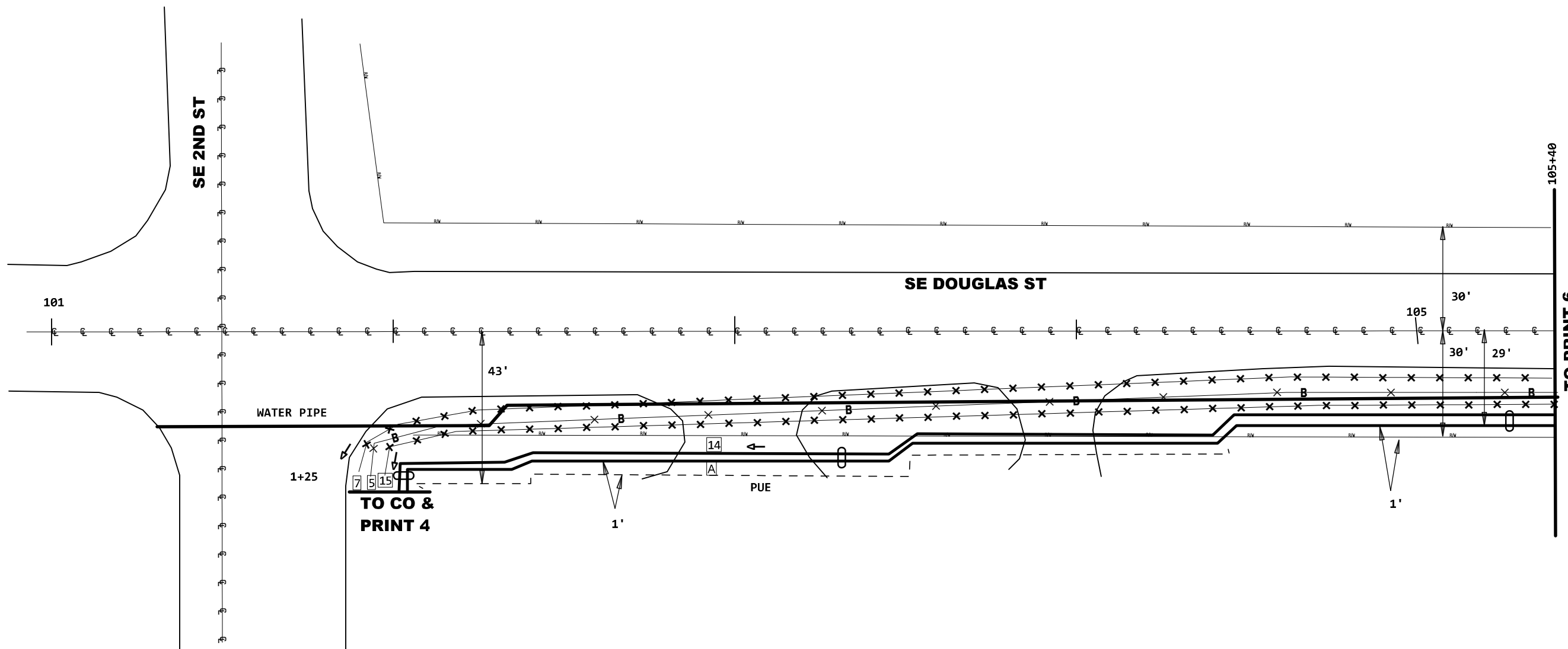
PLACE 1' OFF OF R/W OR PUE

PLACE AT 24" DEEP  
60" UNDER ROADS

PRINT 4  
A 2112' 3"-PVC (PPA) 4C

- CONSTRUCTION NOTES:**
1. CALL LOCATOR 48 HOURS BEFORE DIGGING.
  2. RESTORE ALL DISTURBED GROUND TO ORIGINAL OR BETTER CONDITION.
  3. PROVIDE ALL BARRICADES AND WORK PROTECTION.
  4. REMOVE ALL DEBRIS.
  5. ALL PROPOSED WORK IN THE EXISTING PUBLIC RIGHT OF WAY OR UTILITY EASEMENT.

BEFORE YOU DIG!  
2 DAYS PRIOR  
CALL 811



PRINT 2  
5 (2002) 845X 0'  
3BQ2MT-216  
L2RA001,1-216

PRINT 3  
7 (1996) 85X 0'  
AT-34T2MT-072  
L2005,1-48  
D,49-52  
L2005,53-56  
A,57-58  
L2005,59-62  
A,63-66  
L2005,67-72

PRINT 4  
14 (PPA) 85C 0'  
5BQ2MR-432  
L2005,1-48  
D,49-52  
L2005,53-56  
A,57-60  
L2005,61-62  
A,63-66  
L2005,67-72  
L2RA001,1-216  
L2007,1-2  
A,3-4  
L2007,5-108  
A,109-110  
L2007,111-120  
A,121-132  
L2007,133-140  
A,141-144

PRINT 4  
15 (2005) 85X 0'  
5BQ2MT-144  
L2007,1-2  
A,3-4  
L2007,5-108  
A,109-110  
L2007,111-120  
A,121-132  
L2007,133-140  
A,141-144

PROJECT # <b>A05BKG4</b>		DATE SVC REQ'D 01/30/2026	
NPANNX 816524	GEO LOC EE4160	CLLI KSCYMO41	
PRIMARY ENGR.: <b>BUSHART, TIMOTHY</b>			
ENGR. ID: <b>TB2697</b>		PERMIT REQ'D.	<b>Y</b>
PHONE #: <b>8168032608</b>		PRINT <b>5</b> OF <b>13</b>	

**VERIFY AND STAKE VARING R/W & EASEMENT PRIOR TO PLACEMENT**

PLACE 1' OFF OF R/W OR PUE

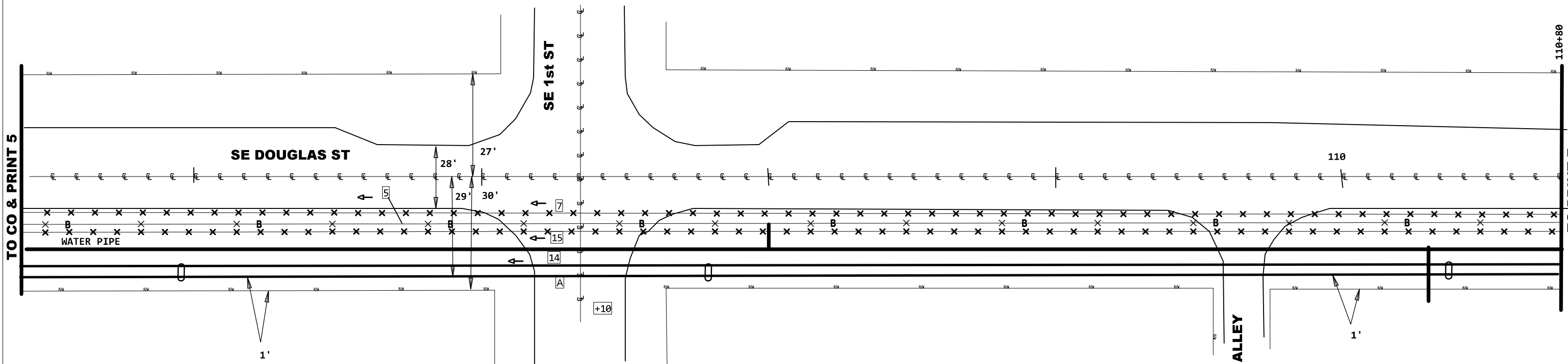
PLACE AT 24" DEEP

60" UNDER ROADS

**CONSTRUCTION NOTES:**

1. CALL LOCATOR 48 HOURS BEFORE DIGGING.
2. RESTORE ALL DISTURBED GROUND TO ORIGINAL OR BETTER CONDITION.
3. PROVIDE ALL BARRICADES AND WORK PROTECTION.
4. REMOVE ALL DEBRIS.
5. ALL PROPOSED WORK IN THE EXISTING PUBLIC RIGHT OF WAY OR UTILITY EASEMENT.

BEFORE YOU DIG!  
2 DAYS PRIOR  
CALL 811



TO GO & PRINT 5

TO PRINT 7

PRINT 2  
 (2002) 845X 0'  
 3BQ2MT-216  
 L2RA001,1-216

PRINT 3  
 (1996) 85X 0'  
 AT-34T2MT-072  
 L2005,1-48  
 D,49-52  
 L2005,53-56  
 A,57-58  
 L2005,59-62  
 A,63-66  
 L2005,67-72

PRINT 4  
 (PPA) 85C 0'  
 5BQ2MR-432  
 L2005,1-48  
 D,49-52  
 L2005,53-56  
 A,57-60  
 L2005,61-62  
 A,63-66  
 L2005,67-72  
 L2RA001,1-216  
 L2007,1-2  
 A,3-4  
 L2007,5-108  
 A,109-110  
 L2007,111-120  
 A,121-132  
 L2007,133-140  
 A,141-144

PRINT 4  
 (2005) 85X 0'  
 5BQ2MT-144  
 L2007,1-2  
 A,3-4  
 L2007,5-108  
 A,109-110  
 L2007,111-120  
 A,121-132  
 L2007,133-140  
 A,141-144

PRINT 4  
 2112' 3"-PVC (PPA) 4C

PROJECT # <b>A05BKG4</b>		DATE SVC REQ'D 01/30/2026	
NPANNX 816524	GEO LOC EE4160	CLLI KSCYMO41	
PRIMARY ENGR.: BUSHART, TIMOTHY			
ENGR. ID: TB2697		PERMIT REQ'D.	Y
PHONE #: 8168032608		PRINT 6 OF 13	

**VERIFY AND STAKE VARING R/W & EASEMENT PRIOR TO PLACEMENT**

PLACE 1' OFF OF R/W OR PUE

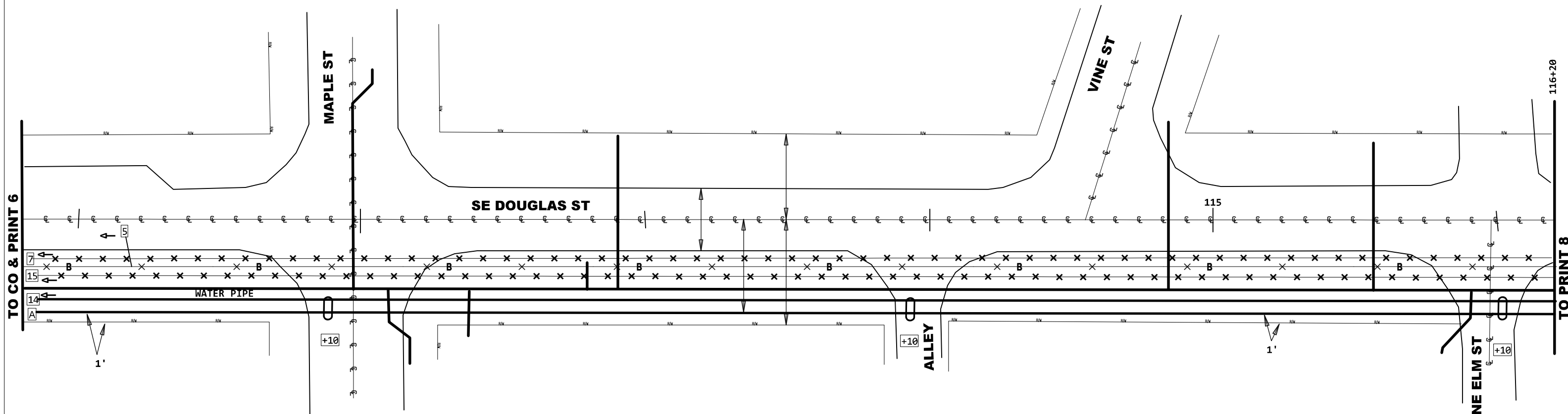
PLACE AT 24" DEEP

60" UNDER ROADS

**CONSTRUCTION NOTES:**

1. CALL LOCATOR 48 HOURS BEFORE DIGGING.
2. RESTORE ALL DISTURBED GROUND TO ORIGINAL OR BETTER CONDITION.
3. PROVIDE ALL BARRICADES AND WORK PROTECTION.
4. REMOVE ALL DEBRIS.
5. ALL PROPOSED WORK IN THE EXISTING PUBLIC RIGHT OF WAY OR UTILITY EASEMENT.

BEFORE YOU DIG!  
2 DAYS PRIOR  
CALL 811



TO CO & PRINT 6

TO PRINT 8

- PRINT 2
- 5 (2002) 845X 0'
  - 3BQ2MT-216
  - L2RA001,1-216
- PRINT 3
- 7 (1996) 85X 0'
  - AT-34T2MT-072
  - L2005,1-48
  - D,49-52
  - L2005,53-56
  - A,57-58
  - L2005,59-62
  - A,63-66
  - L2005,67-72

- PRINT 4
- 14 (PPA) 85C 0'
  - 5BQ2MR-432
  - L2005,1-48
  - D,49-52
  - L2005,53-56
  - A,57-60
  - L2005,61-62
  - A,63-66
  - L2005,67-72
  - L2RA001,1-216
  - L2007,1-2
  - A,3-4
  - L2007,5-108
  - A,109-110
  - L2007,111-120
  - A,121-132
  - L2007,133-140
  - A,141-144

- PRINT 4
- 15 (2005) 85X 0'
  - 5BQ2MT-144
  - L2007,1-2
  - A,3-4
  - L2007,5-108
  - A,109-110
  - L2007,111-120
  - A,121-132
  - L2007,133-140
  - A,141-144

- PRINT 4
- A 2112' 3"-PVC (PPA) 4C

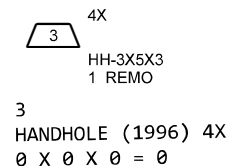
PROJECT # <b>A05BKG4</b>		DATE SVC REQ'D 01/30/2026	
NPANNX 816524	GEO LOC EE4160	CLLI KSCYMO41	
PRIMARY ENGR.: BUSHART, TIMOTHY			
ENGR. ID: TB2697		PERMIT REQ'D.	Y
PHONE #: 8168032608		PRINT 7 OF 13	

**VERIFY AND STAKE VARING R/W & EASEMENT PRIOR TO PLACEMENT**

PLACE 1' OFF OF R/W OR PUE

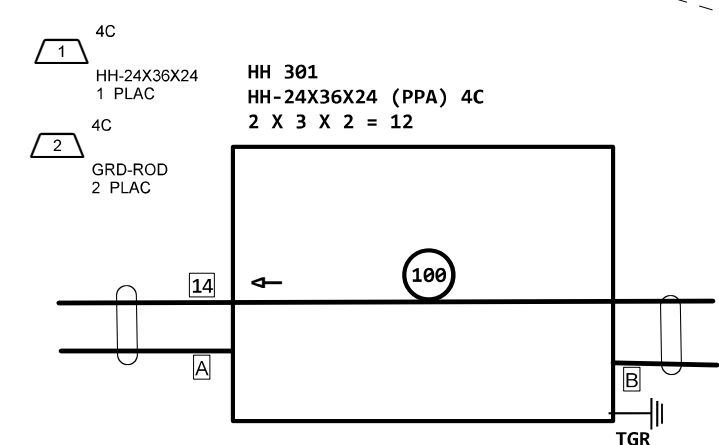
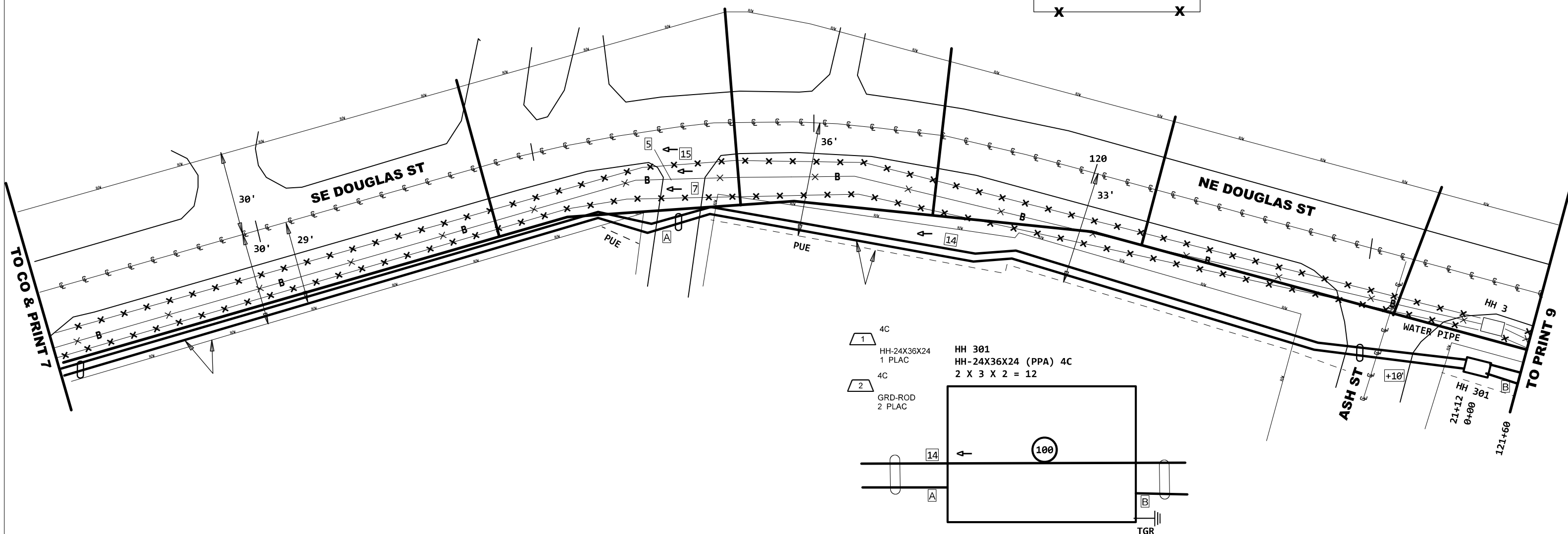
PLACE AT 24" DEEP

60" UNDER ROADS



- CONSTRUCTION NOTES:**
1. CALL LOCATOR 48 HOURS BEFORE DIGGING.
  2. RESTORE ALL DISTURBED GROUND TO ORIGINAL OR BETTER CONDITION.
  3. PROVIDE ALL BARRICADES AND WORK PROTECTION.
  4. REMOVE ALL DEBRIS.
  5. ALL PROPOSED WORK IN THE EXISTING PUBLIC RIGHT OF WAY OR UTILITY EASEMENT.

BEFORE YOU DIG!  
2 DAYS PRIOR  
CALL 811



- PRINT 2**
- (2002) 845X 0' 3BQ2MT-216 L2RA001,1-216
- PRINT 3**
- (1996) 85X 0' AT-34T2MT-072 L2005,1-48 D,49-52 L2005,53-56 A,57-58 L2005,59-62 A,63-66 L2005,67-72

- PRINT 4**
- (PPA) 85C 0' 5BQ2MR-432 L2005,1-48 D,49-52 L2005,53-56 A,57-60 L2005,61-62 A,63-66 L2005,67-72 L2RA001,1-216 L2007,1-2 A,3-4 L2007,5-108 A,109-110 L2007,111-120 A,121-132 L2007,133-140 A,141-144

- PRINT 4**
- (2005) 85X 0' 5BQ2MT-144 L2007,1-2 A,3-4 L2007,5-108 A,109-110 L2007,111-120 A,121-132 L2007,133-140 A,141-144

- PRINT 4**
- A 2112' 3"-PVC (PPA) 4C
  - B 1986' 3"-PVC (PPA) 4C

PROJECT # <b>A05BKG4</b>		DATE SVC REQ'D 01/30/2026	
NPANNX 816524	GEO LOC EE4160	CLLI KSCYMO41	
PRIMARY ENGR.: BUSHART, TIMOTHY			
ENGR. ID: TB2697		PERMIT REQ'D.	Y
PHONE #: 8168032608		PRINT 8 OF 13	

**VERIFY AND STAKE VARING R/W & EASEMENT PRIOR TO PLACEMENT**

PLACE 1' OFF OF R/W OR PUE

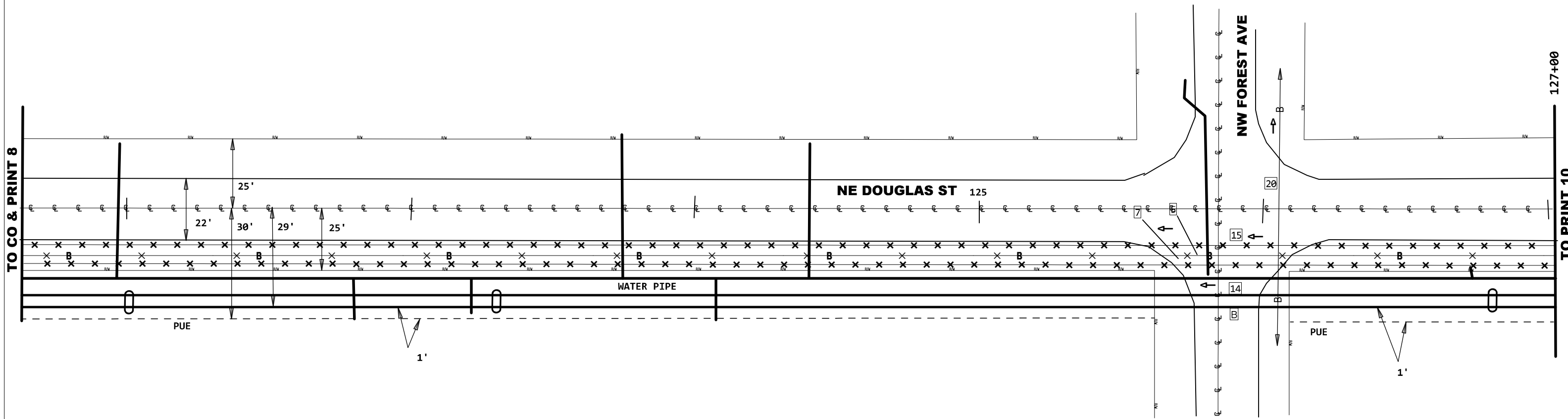
PLACE AT 24" DEEP

60" UNDER ROADS

**CONSTRUCTION NOTES:**

1. CALL LOCATOR 48 HOURS BEFORE DIGGING.
2. RESTORE ALL DISTURBED GROUND TO ORIGINAL OR BETTER CONDITION.
3. PROVIDE ALL BARRICADES AND WORK PROTECTION.
4. REMOVE ALL DEBRIS.
5. ALL PROPOSED WORK IN THE EXISTING PUBLIC RIGHT OF WAY OR UTILITY EASEMENT.

BEFORE YOU DIG!  
2 DAYS PRIOR  
CALL 811



- PRINT 2
- 5 (2002) 845X 0'
  - 3BQ2MT-216
  - L2RA001,1-216
- PRINT 3
- 7 (1996) 85X 0'
  - AT-34T2MT-072
  - L2005,1-48
  - D,49-52
  - L2005,53-56
  - A,57-58
  - L2005,59-62
  - A,63-66
  - L2005,67-72

- PRINT 4
- 14 (PPA) 85C 0'
  - 5BQ2MR-432
  - L2005,1-48
  - D,49-52
  - L2005,53-56
  - A,57-60
  - L2005,61-62
  - A,63-66
  - L2005,67-72
  - L2RA001,1-216
  - L2007,1-2
  - A,3-4
  - L2007,5-108
  - A,109-110
  - L2007,111-120
  - A,121-132
  - L2007,133-140
  - A,141-144

- PRINT 4
- 15 (2005) 85X 0'
  - 5BQ2MT-144
  - L2007,1-2
  - A,3-4
  - L2007,5-108
  - A,109-110
  - L2007,111-120
  - A,121-132
  - L2007,133-140
  - A,141-144
- PRINT 8
- 20 (2018) 845C 533'
  - FNAP-CBL-024
  - PONS310NM,277-300

1986' 3"-PVC (PPA) 4C

PROJECT # <b>A05BKG4</b>		DATE SVC REQ'D 01/30/2026
NPANNX 816524	GEO LOC EE4160	CLLI KSCYMO41
PRIMARY ENGR.: <b>BUSHART, TIMOTHY</b>		
ENGR. ID: <b>TB2697</b>	PERMIT REQ'D.	<b>Y</b>
PHONE #: <b>8168032608</b>	PRINT <b>9</b> OF <b>13</b>	

**VERIFY AND STAKE VARING R/W & EASEMENT PRIOR TO PLACEMENT**

PLACE 1' OFF OF R/W OR PUE

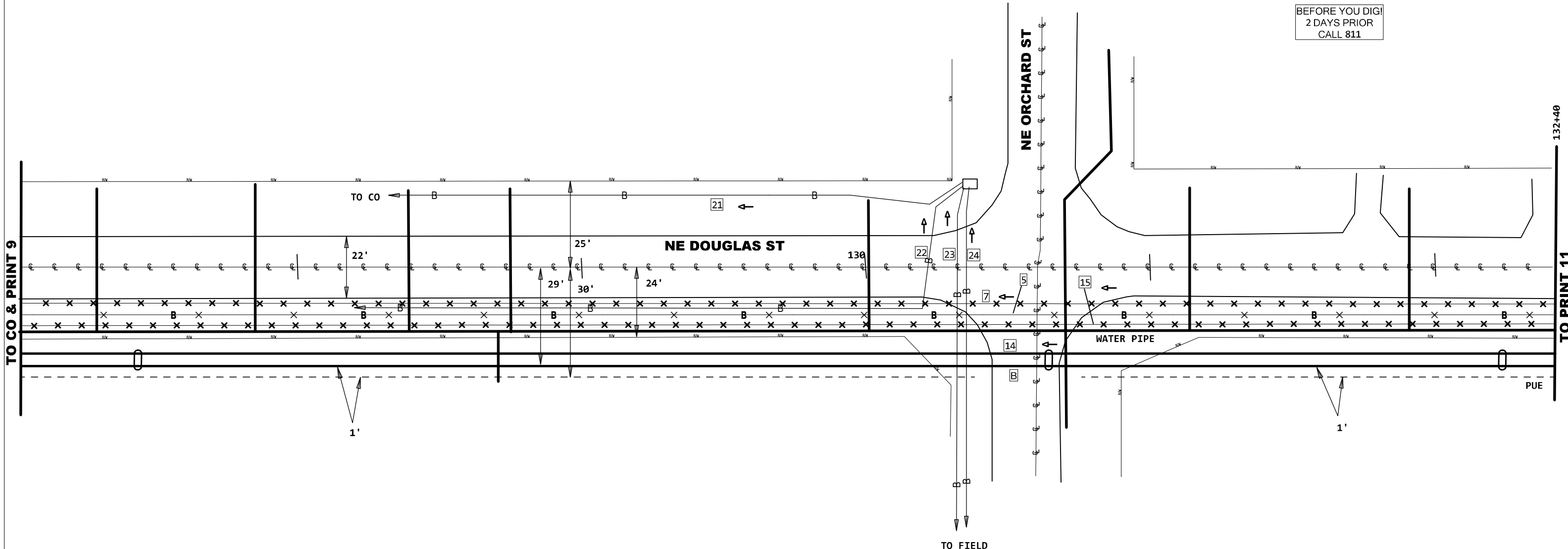
PLACE AT 24" DEEP

60" UNDER ROADS

**CONSTRUCTION NOTES:**

1. CALL LOCATOR 48 HOURS BEFORE DIGGING.
2. RESTORE ALL DISTURBED GROUND TO ORIGINAL OR BETTER CONDITION.
3. PROVIDE ALL BARRICADES AND WORK PROTECTION.
4. REMOVE ALL DEBRIS.
5. ALL PROPOSED WORK IN THE EXISTING PUBLIC RIGHT OF WAY OR UTILITY EASEMENT.

BEFORE YOU DIG!  
2 DAYS PRIOR  
CALL 811



PRINT 2  
 (2002) 845X 0'  
 3BQ2MT-216  
 L2RA001,1-216

PRINT 3  
 (1996) 85X 0'  
 AT-34T2MT-072  
 L2005,1-48  
 D,49-52  
 L2005,53-56  
 A,57-58  
 L2005,59-62  
 A,63-66  
 L2005,67-72

PRINT 4  
 (PPA) 85C 0'  
 5BQ2MR-432  
 L2005,1-48  
 D,49-52  
 L2005,53-56  
 A,57-60  
 L2005,61-62  
 A,63-66  
 L2005,67-72  
 L2RA001,1-216  
 L2007,1-2  
 A,3-4  
 L2007,5-108  
 A,109-110  
 L2007,111-120  
 A,121-132  
 L2007,133-140  
 A,141-144

PRINT 4  
 (2005) 85X 0'  
 5BQ2MT-144  
 L2007,1-2  
 A,3-4  
 L2007,5-108  
 A,109-110  
 L2007,111-120  
 A,121-132  
 L2007,133-140  
 A,141-144

PRINT 8  
 1986' 3"-PVC (PPA) 4C

21 (2018) 845C 668'  
 5BQ2MR-288  
 A,1-12  
 PONS310NM,1-276

22 (2018) 845C 0'  
 FNAP-CBL-024-T  
 A,1-12  
 PONS310NM,265-276

23 (2018) 845C 0'  
 5BQ2MR-288  
 A,1-36  
 PONS310NM,1-252

24 (2018) 845C 0'  
 FNAP-CBL-024-T  
 A,1-12  
 PONS310NM,253-264

PROJECT # <b>A05BKG4</b>		DATE SVC REQ'D 01/30/2026	
NPANNX 816524	GEO LOC EE4160	CLLI KSCYMO41	
PRIMARY ENGR.: BUSHART, TIMOTHY			
ENGR. ID: TB2697		PERMIT REQ'D.	Y
PHONE #: 8168032608		PRINT 10 OF 13	

**VERIFY AND STAKE VARING R/W & EASEMENT PRIOR TO PLACEMENT**

PLACE 1' OFF OF R/W OR PUE

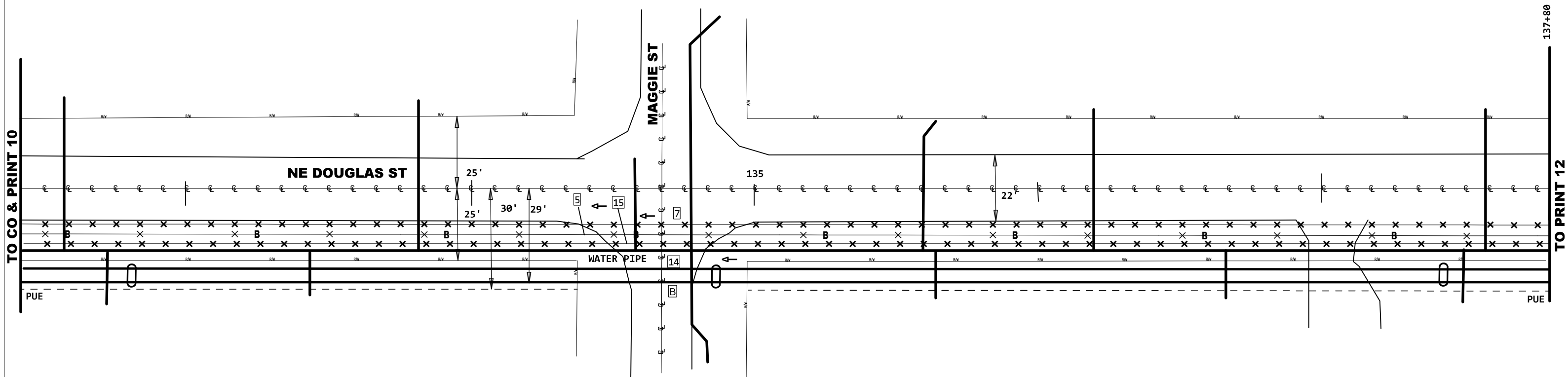
PLACE AT 24" DEEP

60" UNDER ROADS

**CONSTRUCTION NOTES:**

1. CALL LOCATOR 48 HOURS BEFORE DIGGING.
2. RESTORE ALL DISTURBED GROUND TO ORIGINAL OR BETTER CONDITION.
3. PROVIDE ALL BARRICADES AND WORK PROTECTION.
4. REMOVE ALL DEBRIS.
5. ALL PROPOSED WORK IN THE EXISTING PUBLIC RIGHT OF WAY OR UTILITY EASEMENT.

BEFORE YOU DIG!  
2 DAYS PRIOR  
CALL 811



PRINT 2  
[5] (2002) 845X 0'  
3BQ2MT-216  
L2RA001,1-216

PRINT 3  
[7] (1996) 85X 0'  
AT-34T2MT-072  
L2005,1-48  
D,49-52  
L2005,53-56  
A,57-58  
L2005,59-62  
A,63-66  
L2005,67-72

PRINT 4  
[14] (PPA) 85C 0'  
5BQ2MR-432  
L2005,1-48  
D,49-52  
L2005,53-56  
A,57-60  
L2005,61-62  
A,63-66  
L2005,67-72  
L2RA001,1-216  
L2007,1-2  
A,3-4  
L2007,5-108  
A,109-110  
L2007,111-120  
A,121-132  
L2007,133-140  
A,141-144

PRINT 4  
[15] (2005) 85X 0'  
5BQ2MT-144  
L2007,1-2  
A,3-4  
L2007,5-108  
A,109-110  
L2007,111-120  
A,121-132  
L2007,133-140  
A,141-144

PRINT 8  
[B] 1986' 3"-PVC (PPA) 4C

PROJECT # <b>A05BKG4</b>		DATE SVC REQ'D 01/30/2026
NPANNX 816524	GEO LOC EE4160	CLLI KSCYMO41
PRIMARY ENGR.: BUSHART, TIMOTHY		
ENGR. ID: TB2697	PERMIT REQ'D.	Y
PHONE #: 8168032608	PRINT 11 OF 13	

**VERIFY AND STAKE VARING R/W & EASEMENT PRIOR TO PLACEMENT**

PLACE 1' OFF OF R/W OR PUE

PLACE AT 24" DEEP

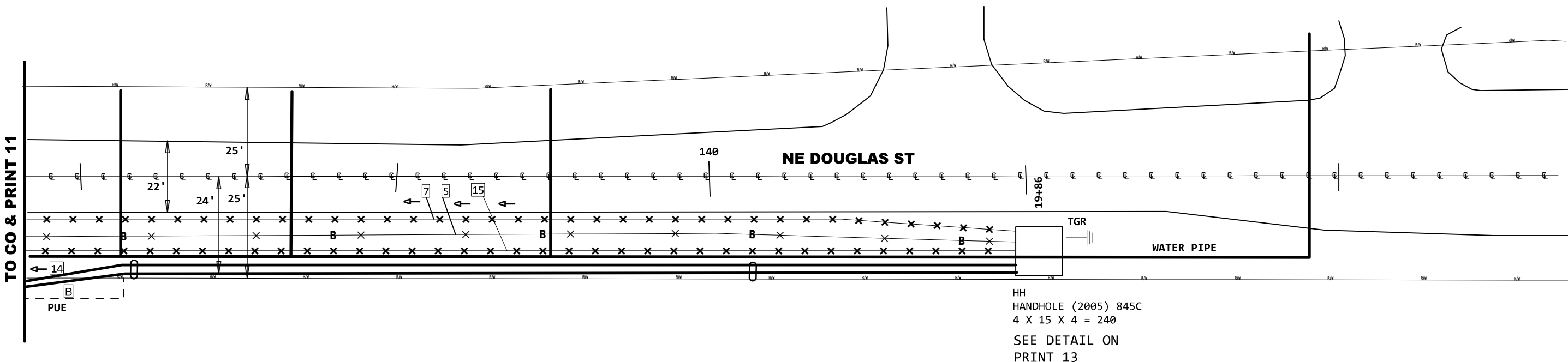
60" UNDER ROADS

**CONSTRUCTION NOTES:**

1. CALL LOCATOR 48 HOURS BEFORE DIGGING.
2. RESTORE ALL DISTURBED GROUND TO ORIGINAL OR BETTER CONDITION.
3. PROVIDE ALL BARRICADES AND WORK PROTECTION.
4. REMOVE ALL DEBRIS.
5. ALL PROPOSED WORK IN THE EXISTING PUBLIC RIGHT OF WAY OR UTILITY EASEMENT.

BEFORE YOU DIG!  
2 DAYS PRIOR  
CALL 811

**MAGGIE ST**



HH  
HANDHOLE (2005) 845C  
4 X 15 X 4 = 240  
SEE DETAIL ON  
PRINT 13

TO CO & PRINT 11

PRINT 2  
[5] (2002) 845X 0'  
3BQ2MT-216  
L2RA001,1-216

PRINT 3  
[7] (1996) 85X 0'  
AT-34T2MT-072  
L2005,1-48  
D,49-52  
L2005,53-56  
A,57-58  
L2005,59-62  
A,63-66  
L2005,67-72

PRINT 4  
[14] (PPA) 85C 0'  
5BQ2MR-432  
L2005,1-48  
D,49-52  
L2005,53-56  
A,57-60  
L2005,61-62  
A,63-66  
L2005,67-72  
L2RA001,1-216  
L2007,1-2  
A,3-4  
L2007,5-108  
A,109-110  
L2007,111-120  
A,121-132  
L2007,133-140  
A,141-144

PRINT 4  
[15] (2005) 85X 0'  
5BQ2MT-144  
L2007,1-2  
A,3-4  
L2007,5-108  
A,109-110  
L2007,111-120  
A,121-132  
L2007,133-140  
A,141-144

PRINT 8  
[B] 1986' 3"-PVC (PPA) 4C

PROJECT # <b>A05BKG4</b>		DATE SVC REQ'D 01/30/2026
NPANNX 816524	GEO LOC EE4160	CLLI KSCYMO41
PRIMARY ENGR.: <b>BUSHART, TIMOTHY</b>		
ENGR. ID: <b>TB2697</b>	PERMIT REQ'D.	<b>Y</b>
PHONE #: <b>8168032608</b>	PRINT <b>12</b> OF <b>13</b>	

**VERIFY AND STAKE VARING R/W & EASEMENT PRIOR TO PLACEMENT**

PLACE 1' OFF OF R/W OR PUE

PLACE AT 24" DEEP

60" UNDER ROADS

PRINT 8  
 B 1986' 3"-PVC (PPA) 4C

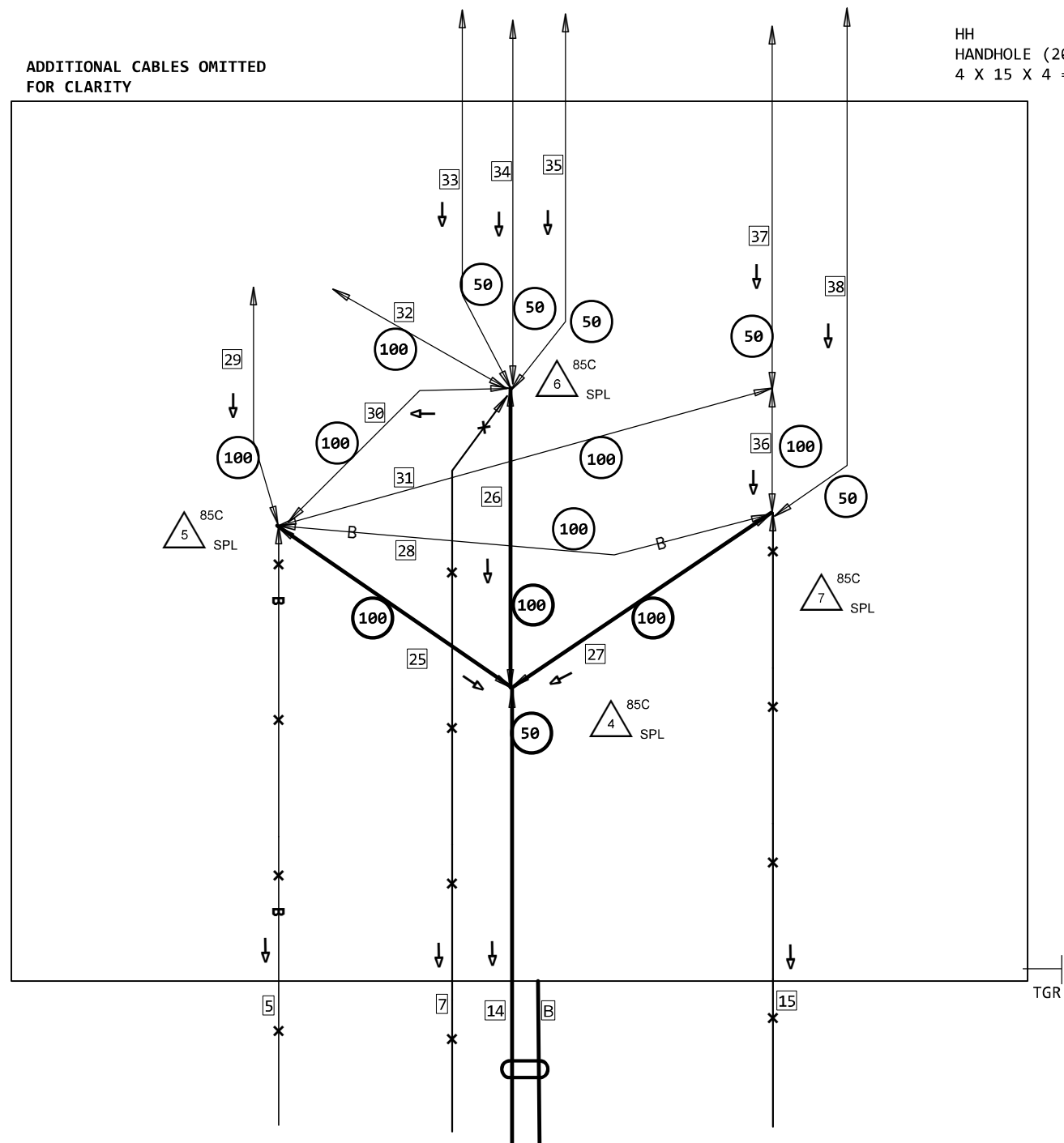
- CONSTRUCTION NOTES:**
1. CALL LOCATOR 48 HOURS BEFORE DIGGING.
  2. RESTORE ALL DISTURBED GROUND TO ORIGINAL OR BETTER CONDITION.
  3. PROVIDE ALL BARRICADES AND WORK PROTECTION.
  4. REMOVE ALL DEBRIS.
  5. ALL PROPOSED WORK IN THE EXISTING PUBLIC RIGHT OF WAY OR UTILITY EASEMENT.

BEFORE YOU DIG!  
 2 DAYS PRIOR  
 CALL 811

**NE CHIPMAN RD**

ADDITIONAL CABLES OMITTED FOR CLARITY

HH  
 HANDHOLE (2005) 845C  
 4 X 15 X 4 = 240



**NE DOUGLAS ST**

**MAGGIE ST**

35 (2004) 85C 1034'  
 54Q2MT-024  
 L2005,69-72  
 A,5-14  
 L2007,63-68  
 A,21-24

29 (2014) 85C 125'  
 5BQ2MT-216  
 L2RA001,1-216

36 (2005) 85C 100'  
 5BQ2MT-072  
 B,1-6  
 L2007,7-40  
 C,41-42  
 L2007,43-56  
 C,57-58  
 L2007,59-72

30 (2004) 85C 100'  
 5BQ2MT-048  
 L2007,81-92  
 L2007,103-108  
 D,19-24  
 L2007,73-76  
 L2007,77-80  
 L2007,93-96  
 L2007,63-68  
 D,43-48

37 (2005) 85C 6135'  
 5BQ2MT-072  
 LS L2RA001,205-210  
 L2007,7-36  
 RA L2RA001,205-210  
 L2007,43-56  
 C,57-58  
 L2007,59-62  
 RA L2RA001,211-214  
 RA L2RA001,123-124  
 L2007,69-72

31 (2005) 85C 100'  
 5BQ2MT-072  
 LS L2RA001,205-210  
 D,7-34  
 RA L2RA001,123-124  
 RA L2RA001,205-210  
 D,43-58  
 RA L2RA001,211-214  
 L2007,63-68  
 D,69-72

38 (2011) 85C 1034'  
 5BQ2MT-072  
 L2007,1-2  
 C,3-4  
 L2007,5-6  
 C,7-12  
 L2007,133-140  
 C,21-26  
 L2007,53-56  
 C,27-40  
 L2007,41-42  
 C,43-56  
 L2007,57-58  
 C,59-72

32 (2014) 85C 125'  
 5BQ2MT-072  
 L2005,13-20  
 L2007,81-92  
 D,49-50  
 L2005,25-36  
 L2007,73-76  
 L2007,103-108  
 D,51-52  
 L2005,37-48  
 L2005,53-56  
 B,57-58  
 L2007,77-80  
 L2007,93-96

33 (2013) 85C 674'  
 5BQ2MT-072  
 L2005,61-62  
 C,3-6  
 L2005,67-68  
 C,9-72

34 (2004) 85C 1574'  
 54Q2MT-024  
 L2005,1-12  
 RAYTOWN L2RA001,215-216  
 D,15-20  
 L2005,21-24

PRINT 2  
 1 85C  
 5BQ2MT-216  
 150 PLAC  
 25 (PPA) 85C 150'  
 5BQ2MT-216  
 L2RA001,1-216

2 85C  
 5BQ2MT-072  
 150 PLAC  
 26 (PPA) 85C 150'  
 5BQ2MT-072  
 L2005,1-48  
 D,49-52  
 L2005,53-56  
 A,57-58  
 L2005,59-62  
 A,63-66  
 L2005,67-72

3 85C  
 5BQ2MT-144  
 150 PLAC  
 27 (PPA) 85C 150'  
 5BQ2MT-144  
 L2007,1-2  
 A,3-4  
 L2007,5-108  
 A,109-110  
 L2007,111-120  
 A,121-132  
 L2007,133-140  
 A,141-144

4 85C  
 SPL  
 28 (2007) 845C 120'  
 5BQ2MT-072  
 L2007,73-108  
 A,109-110  
 L2007,111-120  
 A,121-132  
 A,133-140  
 A,141-144

5 85C  
 SPL  
 15 (2005) 85X 0'  
 5BQ2MT-144  
 L2007,1-2  
 A,3-4  
 L2007,5-108  
 A,109-110  
 L2007,111-120  
 A,121-132  
 L2007,133-140  
 A,141-144

6 85C  
 SPL  
 7 (1996) 85X 0'  
 AT-34T2MT-072  
 L2005,1-48  
 D,49-52  
 L2005,53-56  
 A,57-60  
 L2005,61-62  
 A,63-66  
 L2005,67-72  
 L2RA001,1-216  
 L2007,1-2  
 A,3-4  
 L2007,5-108  
 A,109-110  
 L2007,111-120  
 A,121-132  
 L2007,133-140  
 A,141-144

8 85C  
 SPL  
 14 (PPA) 85C 0'  
 5BQ2MR-432  
 L2005,1-48  
 D,49-52  
 L2005,53-56  
 A,57-60  
 L2005,61-62  
 A,63-66  
 L2005,67-72  
 L2RA001,1-216  
 L2007,1-2  
 A,3-4  
 L2007,5-108  
 A,109-110  
 L2007,111-120  
 A,121-132  
 L2007,133-140  
 A,141-144

9 85C  
 SPL  
 15 (2005) 85X 0'  
 5BQ2MT-144  
 L2007,1-2  
 A,3-4  
 L2007,5-108  
 A,109-110  
 L2007,111-120  
 A,121-132  
 L2007,133-140  
 A,141-144

PROJECT # <b>A05BKG4</b>		DATE SVC REQ'D <b>01/30/2026</b>	
NPANNX <b>816524</b>	GEO LOC <b>EE4160</b>	CLLI <b>KSCYMO41</b>	
PRIMARY ENGR.: <b>BUSHART, TIMOTHY</b>			
ENGR. ID: <b>TB2697</b>		PERMIT REQ'D.	<b>Y</b>
PHONE #: <b>8168032608</b>		PRINT <b>13</b> OF <b>13</b>	