

**280-346 SW Blue Pkwy - Pine Tree Plaza**  
**Lees Summit, MO 64062**

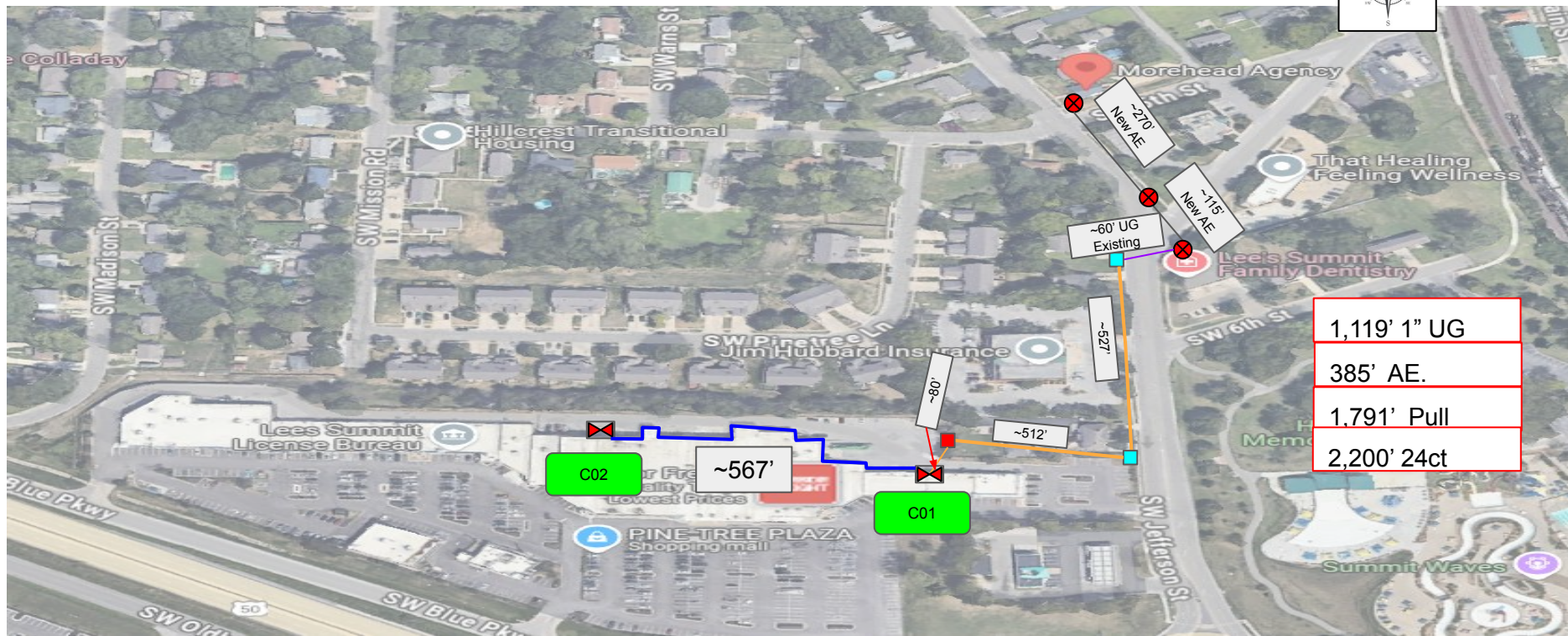
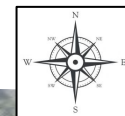
**Building type:** Commercial  
**Living units:** 0  
**Offices/amenities:** 0  
**Commercial:** 28  
**Property contact:** Asst PM- Jason Leone / (816)556-1107 / Jason.Leone@colliers.com  
**POC-PM- Christie Montague / O: (816)556-1141, C: (816)206-8506 / christie.montague@colliers.com**

**Engineer:** Jesse Washam  
**Date surveyed:** 1/2/2025  
**PRID#** PR3873946941

**Comments/Changes:** 1,119" UG 1". Lift for the back side high work.  
 Requesting (1) DF from MCI138e-F003a-F04.

## Construction Notes:

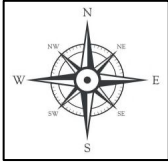
1. Run aerial 24ct from existing NAP, ~360 to pole #LS2736. Use existing riser to run through existing 1" conduit west ~60' under SW Jefferson St.
2. Set new 11x18" vault where conduit daylights on west side of Jefferson St.
3. Directional bore 1" UG conduit ~527' to entrance of the property and set 11x18" vault. Directional bore ~512' west onto property and set a 24x36" vault for B Can and 1x2 splitter. Directional bore ~80' south to the building, set NDP. Cover fiber with flexible conduit. Asphalt restoration will be required.
4. From the NDP, run EZ Bend fiber to POE Modules on the back of the building, setting POE at each back door. That pathway is in-between the roof and the ridges. Run 24ct fiber ~567' along the top of the building with the EZ Bend to the 2nd NDP location, CO2.
5. From POE's, run microduct to Fiber Jack location near power at the back of the units.



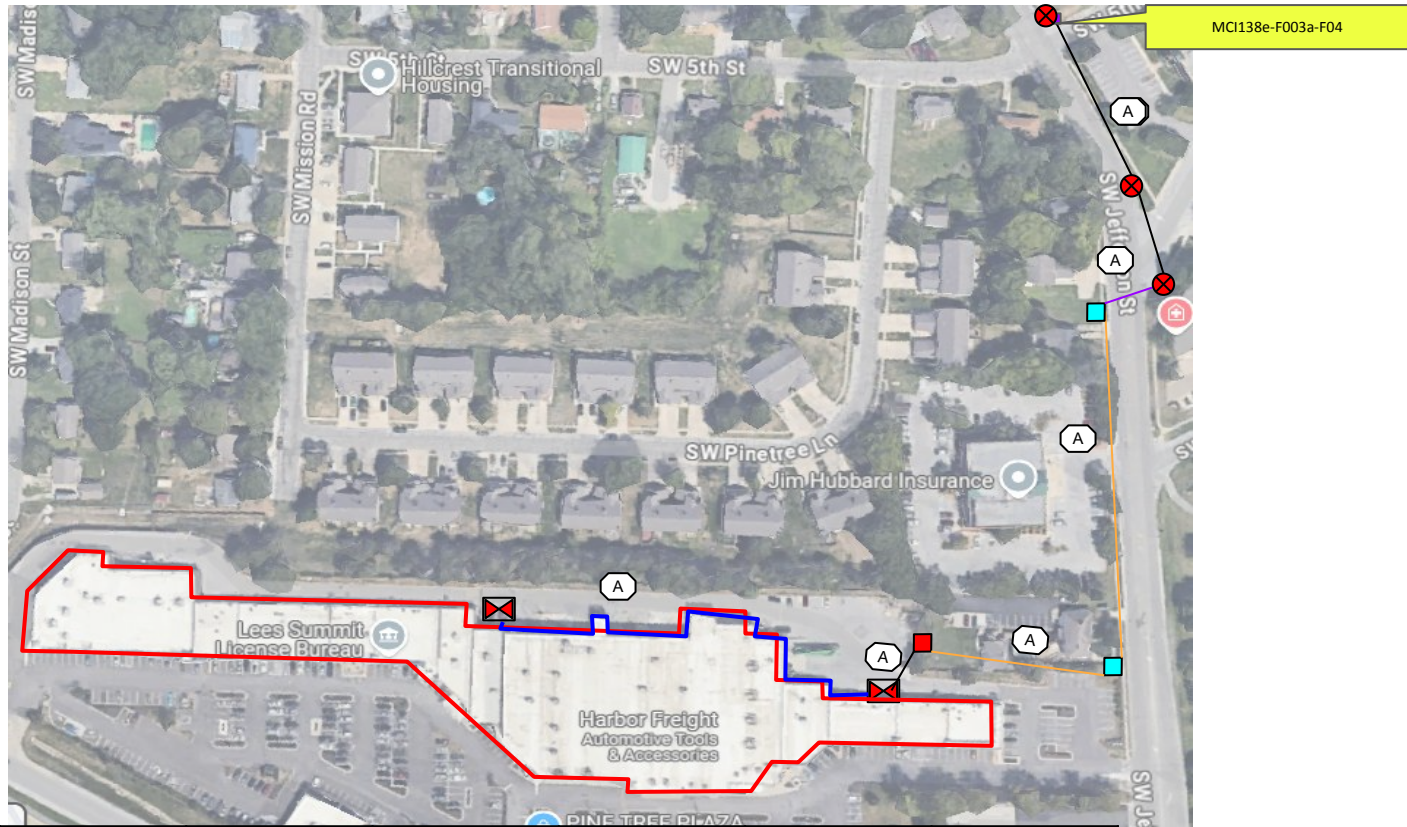
1,119' 1" UG  
 385' AE.  
 1,791' Pull  
 2,200' 24ct

Legend					280-346 SW Blue Pkwy - Pine Tree Plaza OSP			7	
	Existing Conduit		NIU/SFU		Fiber Jack		24x36 Vault	<b>Notes</b>	
	Aerial		Riser Penetration		NDP/FDH Box		17x30 Vault		
	Microduct		Pole		Junction Box		11x18 Vault	1. From MCI138e-F003a-F04, run 24ct AE south ~385' to existing pole at SW Jefferson St and SW Market St. Use existing drop pipe to cross	
	InvisiLight		EZ POE Module		Metal Molding		Existing Vault	2. ~60' to the west. Set new 11x18" vault over pipe. Directional bore 1" UG conduit ~527' south to entrance of property, set 11x18" vault.	
	2" Conduit		EZ Bend Fiber		Splice Point		Liquid Tight	3. Directional bore ~512' west and set 24x36" vault. Run ~567' 24ct fiber from C01 to C02 along the top of the building.	
	1" Conduit		Penetration		Power Outlet		Flexible Conduit	NDP locations on the building. 01/02/25	
								Jesse Washam	NAP ID MCI138e-F003a-F04

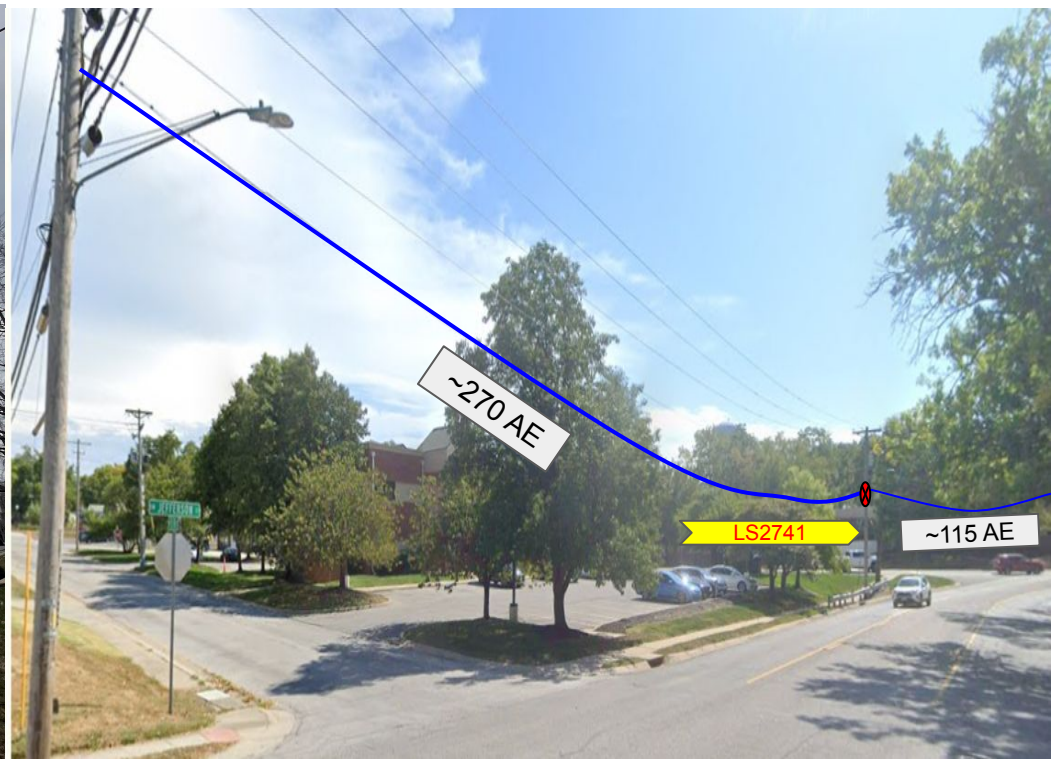
# FIBER



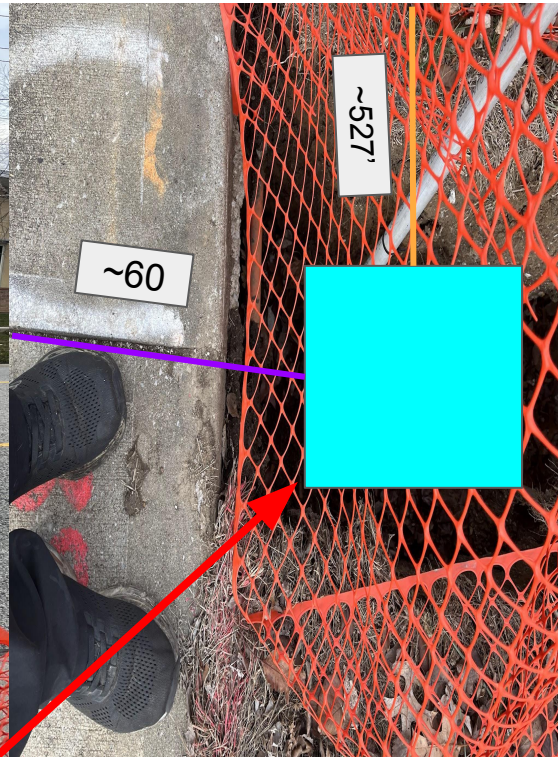
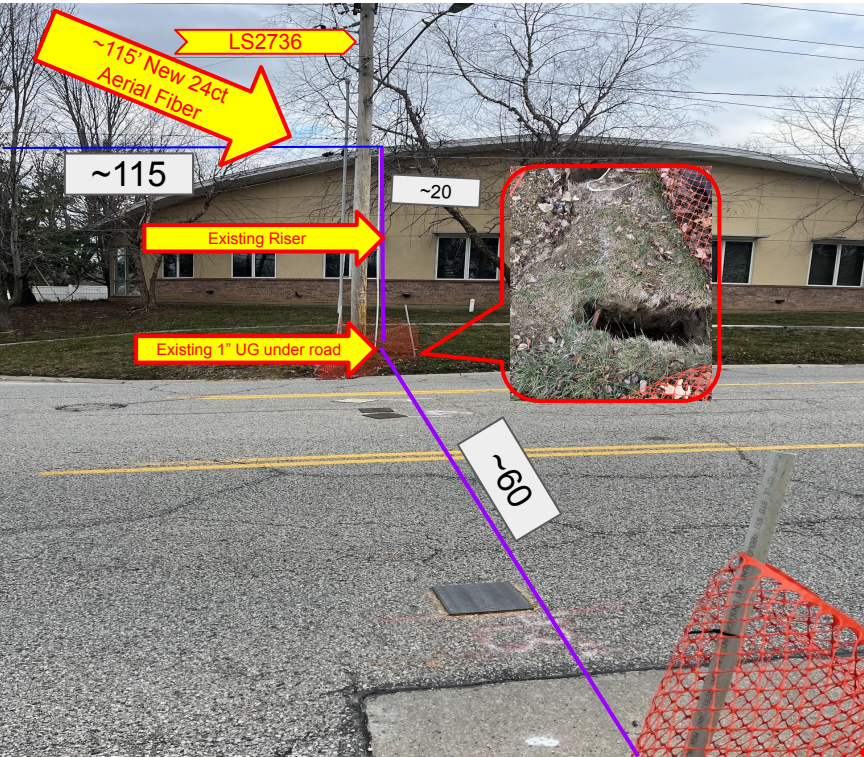
	Existing Vault
	Vault 24x36
	Vault 17x30
	Vault 11x18
	Aerial Pole
	24 ct Fiber
	Existing Conduit
	Splice Closure
	NDP
	NIU/SFU
	1" Conduit
	2" Conduit
	Fiber Label



Label	Description	Distance	Label	Description	Amount
A	24ct Fiber	~2,200'		NDP	2



Legend					280-346 SW Blue Pkwy - OSP Pathway			11
	Existing Conduit		NIU/SFU		Fiber Jack		24x36 Vault	<b>Notes</b> 1. Pic 1 - Run 24ct aerial fiber ~270' from the NAP at 5th and SW Jefferson, Pole # LS2735 to pole # LS2741. Continue aerial ~115' to pole 2. Pic 2 - #LS2736.
	24 ct fiber		Riser Penetration		NDP/FDH Box		17x30 Vault	
	Microduct		Pole		Junction Box		11x18 Vault	
	½" emt		EZ POE Module		Metal Molding		Existing Vault	
	2" Conduit		EZ Bend Fiber		Splice Point		Liquid Tight	
	1" Conduit		Penetration		Power Outlet		Flexible Conduit	
							01/02/25	NAP ID
							Jesse Washam	MCI138e-F003a-F04



**Legend** **280-346 SW Blue Pkwy - OSP Pathway** 12

	Existing Conduit		NIU/SFU		Fiber Jack		24x36 Vault
	24 ct fiber		Riser Penetration		NDP/FDH Box		17x30 Vault
	Microduct		Pole		Junction Box		11x18 Vault
	½" emt		EZ POE Module		Metal Molding		Existing Vault
	2" Conduit		EZ Bend Fiber		Splice Point		Liquid Tight
	1" Conduit		Penetration		Power Outlet		Flexible Conduit

<b>Notes</b>	
1. Pic 1 - Run 24ct aerial fiber ~115' from pole # LS2741 to pole #LS2736. Use existing riser and UG to pull 24ct across Jefferson.	
2. Pic 2 - Set 11x18" vault over 1" existing conduit on the west side of Jefferson. Pic 3 - Directional bore ~527' south to property entrance. .	
3. Note - 1" existing conduit was exposed at time of survey on both sides of Jefferson.	
01/02/25	NAP ID
Jesse Washam	MCI138e-F003a-F04

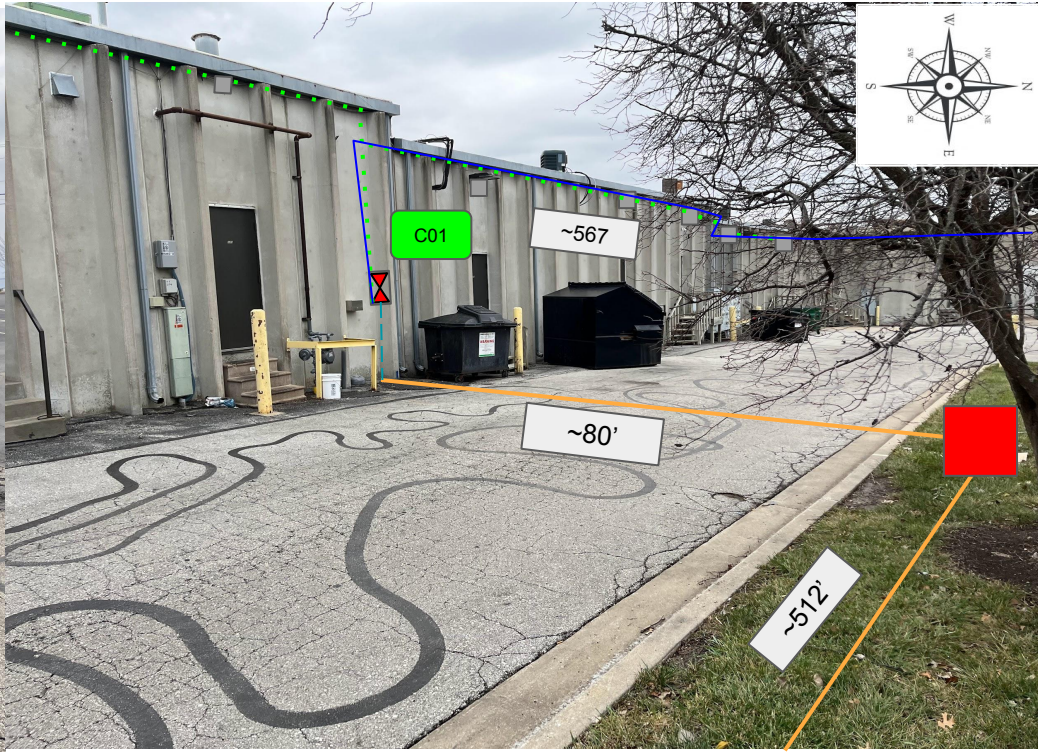


**Legend**

	Existing Conduit		NIU/SFU		Fiber Jack		24x36 Vault
	24 ct fiber		Riser Penetration		NDP/FDH Box		17x30 Vault
	Microduct		Pole		Junction Box		11x18 Vault
	½" emt		EZ POE Module		Metal Molding		Existing Vault
	2" Conduit		EZ Bend Fiber		Splice Point		Liquid Tight
	1" Conduit		Penetration		Power Outlet		Flexible Conduit

**280-346 SW Blue Pkwy - OSP Pathway** 13

<b>Notes</b>	
1. Pic 1 - Directional bore 1" UG from 11x18" vault ~527' to 11x18" vault at the entrance to the property. Looking west into property.	
2. Pic 2 - Directional bore 1" UG ~512' from vault placed at entrance to the property to 11x18" vault. Looking south towards the property.	
01/02/25	NAP ID
Jesse Washam	MCI138e-F003a-F04



## Legend

	Existing Conduit		NIU/SFU		Fiber Jack		24x36 Vault
	24 ct fiber		Riser Penetration		NDP/FDH Box		17x30 Vault
	Microduct		Pole		Junction Box		11x18 Vault
	1/2" emt		EZ POE Module		Metal Molding		Existing Vault
	2" Conduit		EZ Bend Fiber		Splice Point		Liquid Tight
	1" Conduit		Penetration		Power Outlet		Flexible Conduit

## 280-346 SW Blue Pkwy - OSP Pathway

<b>Notes</b>	
1. Pic 1 - Directional bore 1" UG ~512' from 11x18" vault at the entrance to the property to 24x36" vault shown in pic 2.	
2. Pic 2 - Set 24x36" vault, directional bore 1" UG ~80' to the building, cover fiber with flexible conduit up to NDP. (C01)	
Pic 1 - Looking East towards entrance to the property. Pic 2 - Looking west to southwest. Install 1x2 splitter in B Closure at 24x36" vault.	
01/02/25	NAP ID
Jesse Washam	MCI138e-F003a-F04