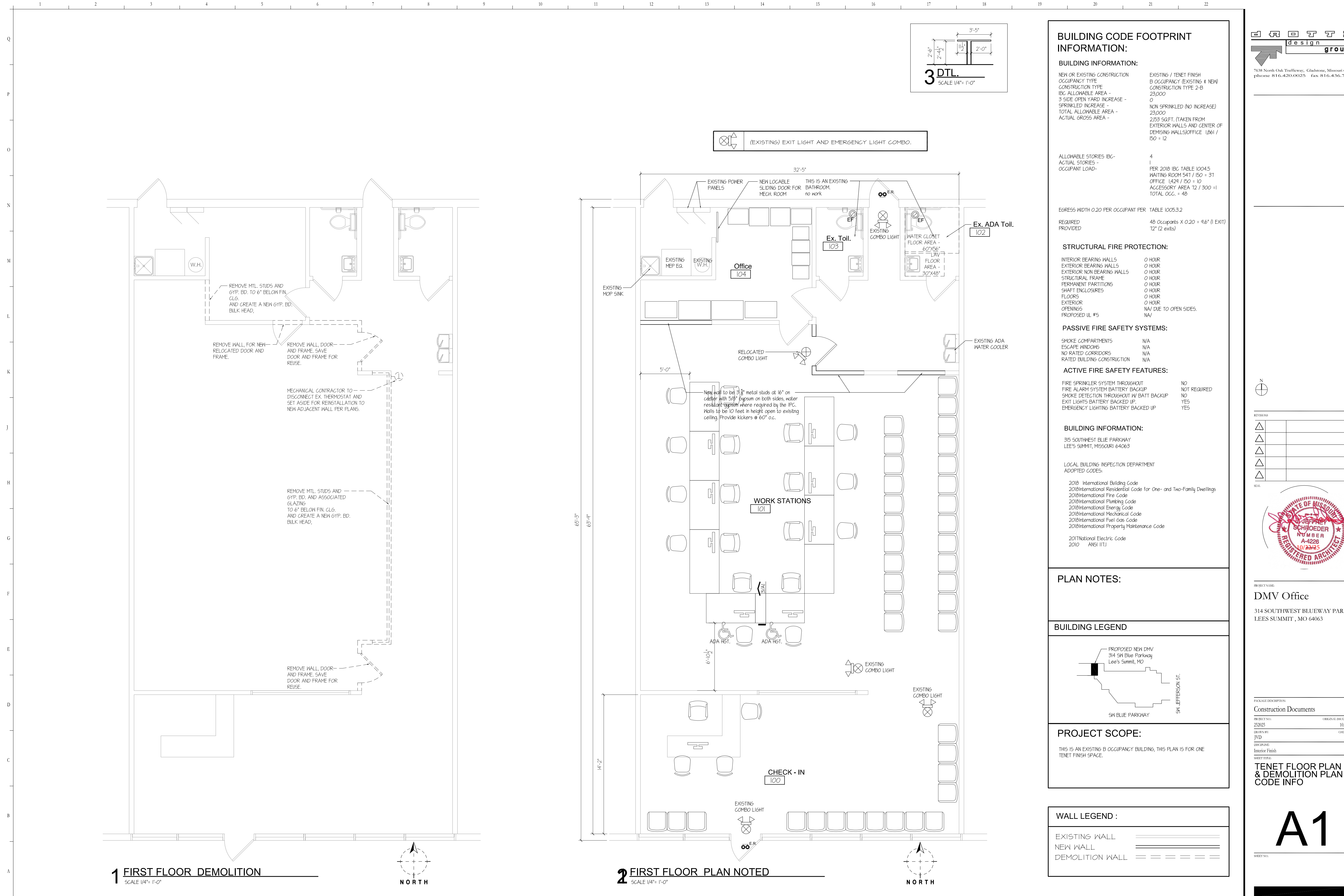


© COPYRIGHT 2005 - ALL RIGHTS RESERVED. NO PORTION(S) OF THIS DOCUMENT MAY BE REPRODUCED WITHOUT THE EXPRESSED WRITTEN CONSENT OF DROTTZ DESIGN GROUP.



**BUILDING CODE FOOTPRINT INFORMATION:**

<b>BUILDING INFORMATION:</b>	
NEW OR EXISTING CONSTRUCTION	EXISTING / TENET FINISH
OCCUPANCY TYPE	B OCCUPANCY (EXISTING 4 NEW)
CONSTRUCTION TYPE	CONSTRUCTION TYPE 2-B
IBC ALLOWABLE AREA -	23,000
3 SIDE OPEN YARD INCREASE -	0
SPRINKLED INCREASE -	NON SPRINKLED (NO INCREASE)
TOTAL ALLOWABLE AREA -	23,000
ACTUAL GROSS AREA -	2,153 SQ.FT. (TAKEN FROM EXTERIOR WALLS AND CENTER OF DEMISING WALLS) OFFICE 1,861 / ISO = 12
ALLOWABLE STORIES IBC -	4
ACTUAL STORIES -	1
OCCUPANT LOAD -	PER 2018 IBC TABLE 1004.5 WAITING ROOM 541 / ISO = 31 OFFICE 1424 / ISO = 10 ACCESSORY AREA T2 / 300 = 1 TOTAL OCC. = 48

EGRESS WIDTH 0.20 PER OCCUPANT PER TABLE 1005.3.2	
REQUIRED	48 Occupants X 0.20 = 9.6' (1 EXIT)
PROVIDED	72' (2 exits)

**STRUCTURAL FIRE PROTECTION:**

INTERIOR BEARING WALLS	0 HOUR
EXTERIOR BEARING WALLS	0 HOUR
EXTERIOR NON BEARING WALLS	0 HOUR
STRUCTURAL FRAME	0 HOUR
PERMANENT PARTITIONS	0 HOUR
SHAFT ENCLOSURES	0 HOUR
FLOORS	0 HOUR
EXTERIOR OPENINGS	0 HOUR
PROPOSED UL #S	NA / DUE TO OPEN SIDES.

**PASSIVE FIRE SAFETY SYSTEMS:**

SMOKE COMPARTMENTS	N/A
ESCAPE WINDOWS	N/A
NO RATED CORRIDORS	N/A
RATED BUILDING CONSTRUCTION	N/A

**ACTIVE FIRE SAFETY FEATURES:**

FIRE SPRINKLER SYSTEM THROUGHOUT	NO
FIRE ALARM SYSTEM BATTERY BACKUP	NOT REQUIRED
SMOKE DETECTION THROUGHOUT W/ BATT BACKUP	YES
EXIT LIGHTS BATTERY BACKED UP	YES
EMERGENCY LIGHTING BATTERY BACKED UP	YES

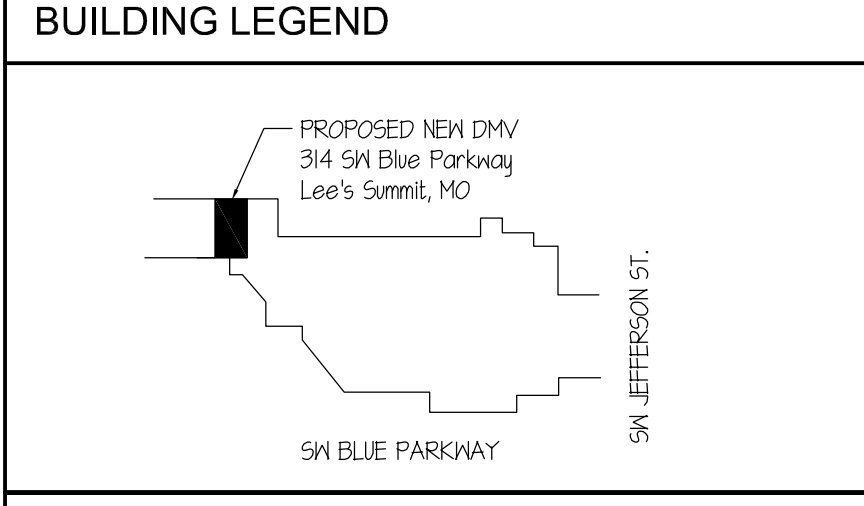
**BUILDING INFORMATION:**  
 315 SOUTHWEST BLUE PARKWAY  
 LEE'S SUMMIT, MISSOURI 64063

LOCAL BUILDING INSPECTION DEPARTMENT  
 ADOPTED CODES:

- 2018 International Building Code
- 2018 International Residential Code for One- and Two-Family Dwellings
- 2018 International Fire Code
- 2018 International Plumbing Code
- 2018 International Energy Code
- 2018 International Mechanical Code
- 2018 International Fuel Gas Code
- 2018 International Property Maintenance Code

2017 National Electric Code  
 2010 ANSI ILLI

**PLAN NOTES:**



**PROJECT SCOPE:**

THIS IS AN EXISTING B OCCUPANCY BUILDING, THIS PLAN IS FOR ONE TENET FINISH SPACE.

**WALL LEGEND :**

EXISTING WALL	=====
NEW WALL	===== <u>=====</u>
DEMOLITION WALL	-----

7638 North Oak Trafficway, Gladstone, Missouri 64118  
 phone 816.420.0025 fax 816.436.7903

REVISIONS

1	
2	
3	
4	
5	

SCALE

PROJECT NAME  
**DMV Office**

314 SOUTHWEST BLUEWAY PARKWAY  
 LEES SUMMIT, MO 64063

PACKAGE DESCRIPTION  
 Construction Documents

PROJECT NO:	252025	ORIGINAL ISSUE DATE:	10.19.25
DRAWN BY:	JVD	CHECK BY:	
DISCIPLINE:	Interior Finish		
SHEET TITLE:	<b>TENET FLOOR PLAN &amp; DEMOLITION PLAN CODE INFO</b>		

**A1**

SHEET NO.