

Drawing Prepared For:



Jobsite Address:

1921 NE Trail Edge Blvd, Lee's Summit, MO 64086, USA

Issued:

SEPTEMBER 29, 2025

Version:

3.0 - OCTOBER 16, 2025





SIGN LOCATION

The Gardens at
Unity Village

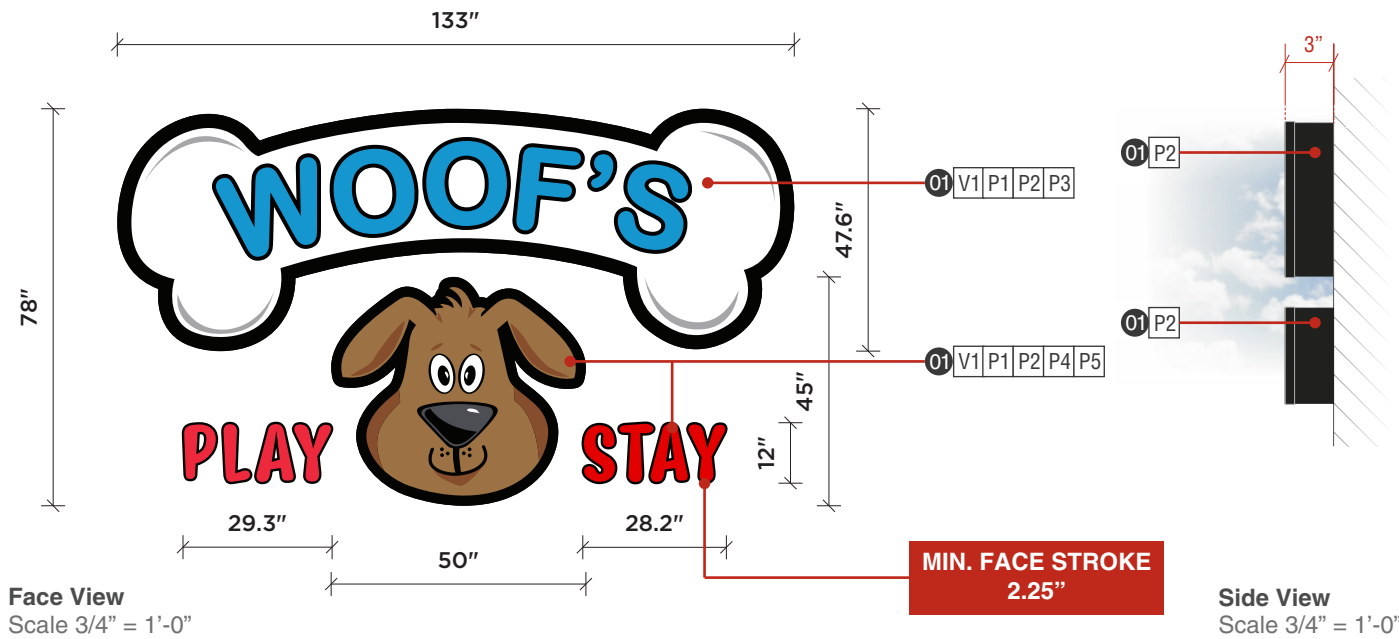
NW Colbern Rd

NW Colbern Rd

NW Colbern Rd

NE Douglas St

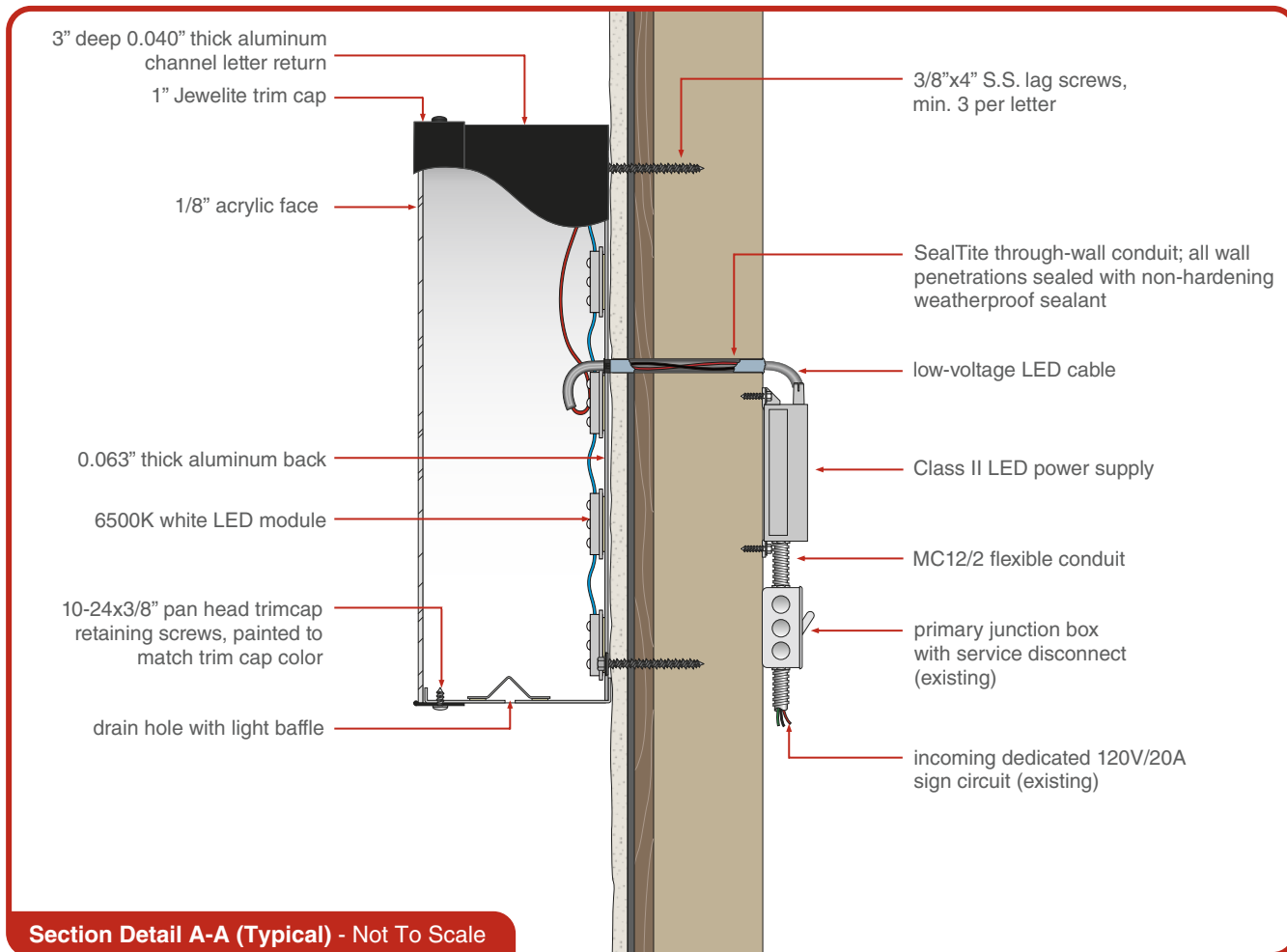
Site Plan
Not To Scale



Sign Type A (Elevation): Front Lit Channel Letters, flush-mounted.

Code Allowance: -
Total Sign Area: 72 sq.ft.
 Sign Width: 133"

- 01 Channel Letters (72 Sq. Ft.):**
- Face: 1/8" acrylic with digitally-printed vinyl.
 - Trimcap: 1" jewelite painted black.
 - Return: 3" deep 0.040" thick aluminum painted black.
 - Backs: 0.063" thick aluminum back.
 - Illumination: 6500K white LED's.
 - Power Supplies: 12V, remotely mounted behind wall.
 - Installation: flush mounted to the wall.



- Vinyl Colors:**
- V1 Digitally Printed
- Paint Colors:**
- P1 White
 - P2 Black
 - P3 Pantone 7689 C
 - P4 Pantone 1797 C
 - P5 Pantone 2314 C

Notes:

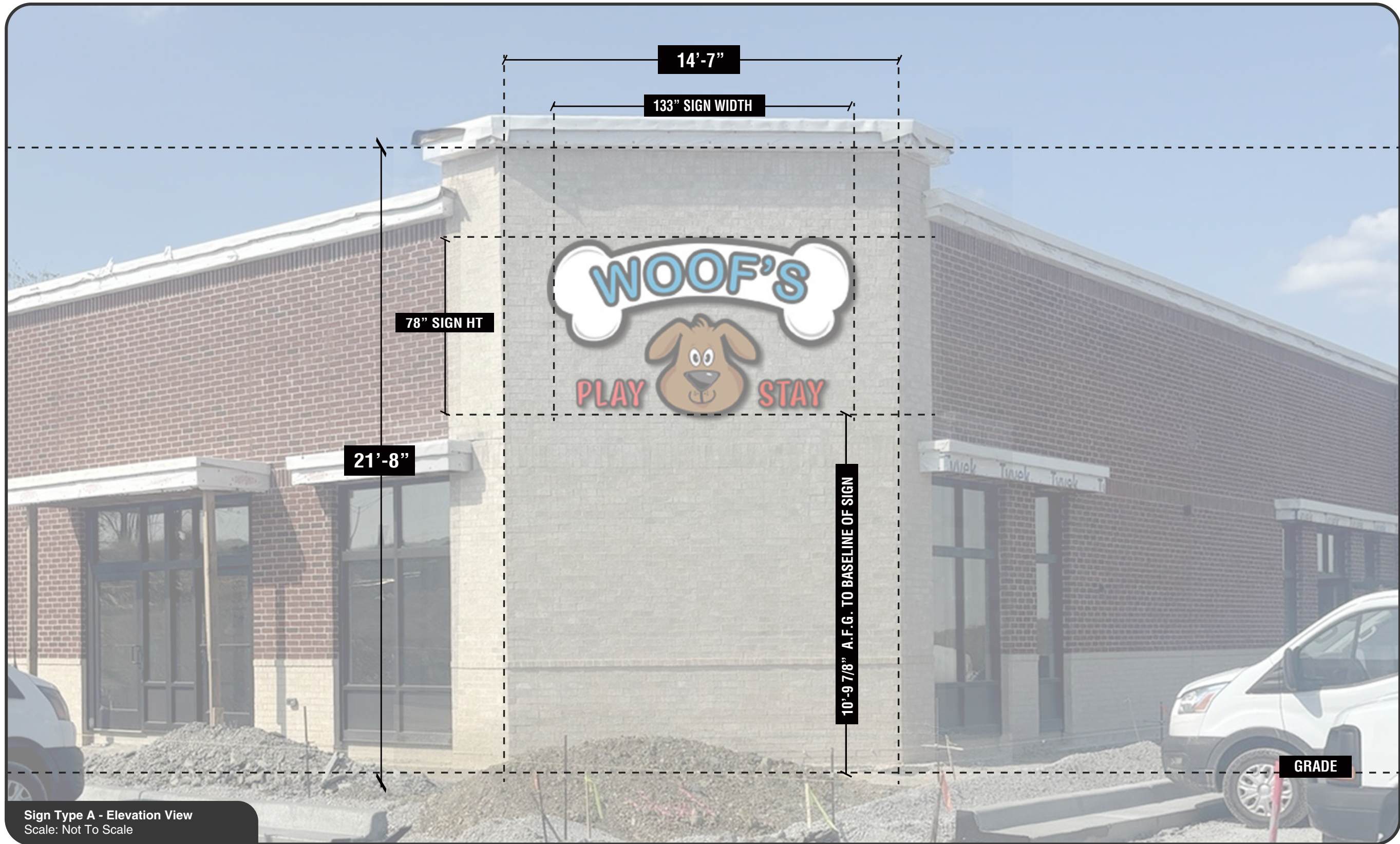
Power Requirements: one (1) 120V/20A dedicated sign circuit that supplies no other load, connected directly to breaker panel, controlled by photocell or timer; power feed must terminate in a junction box within five (5) feet of sign location



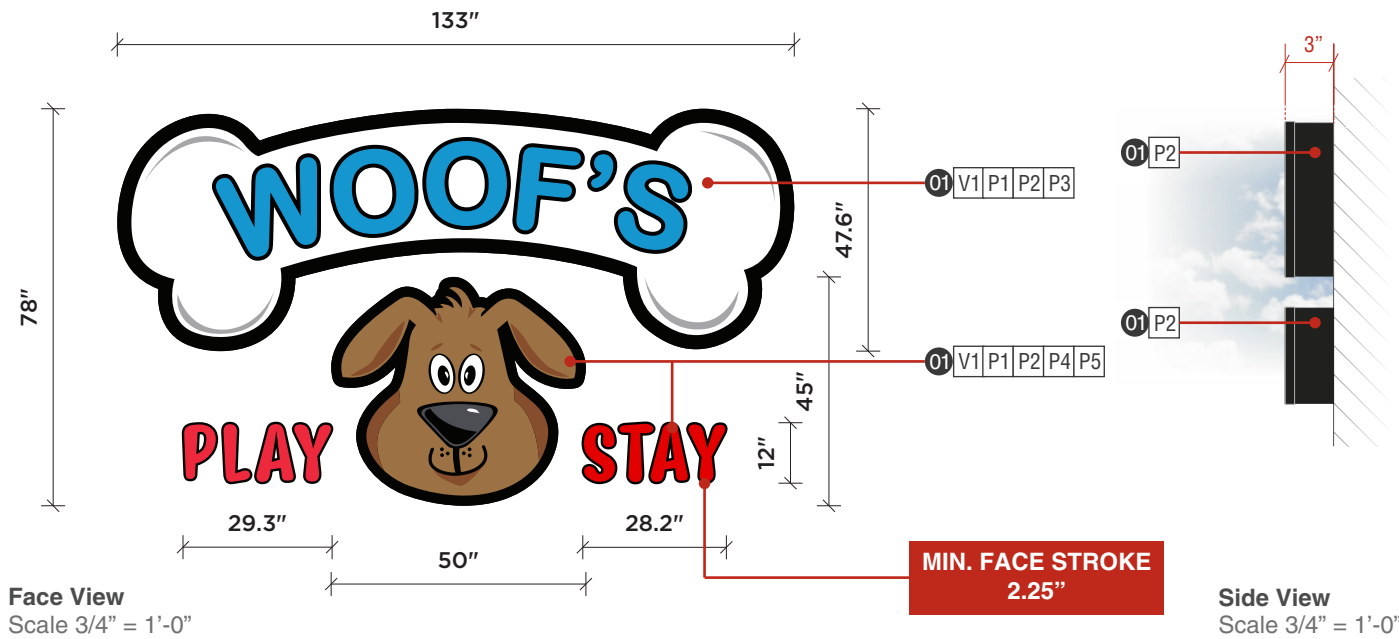
Sign Type A - Daytime View
Not To Scale



Sign Type A - Nighttime View
Not To Scale



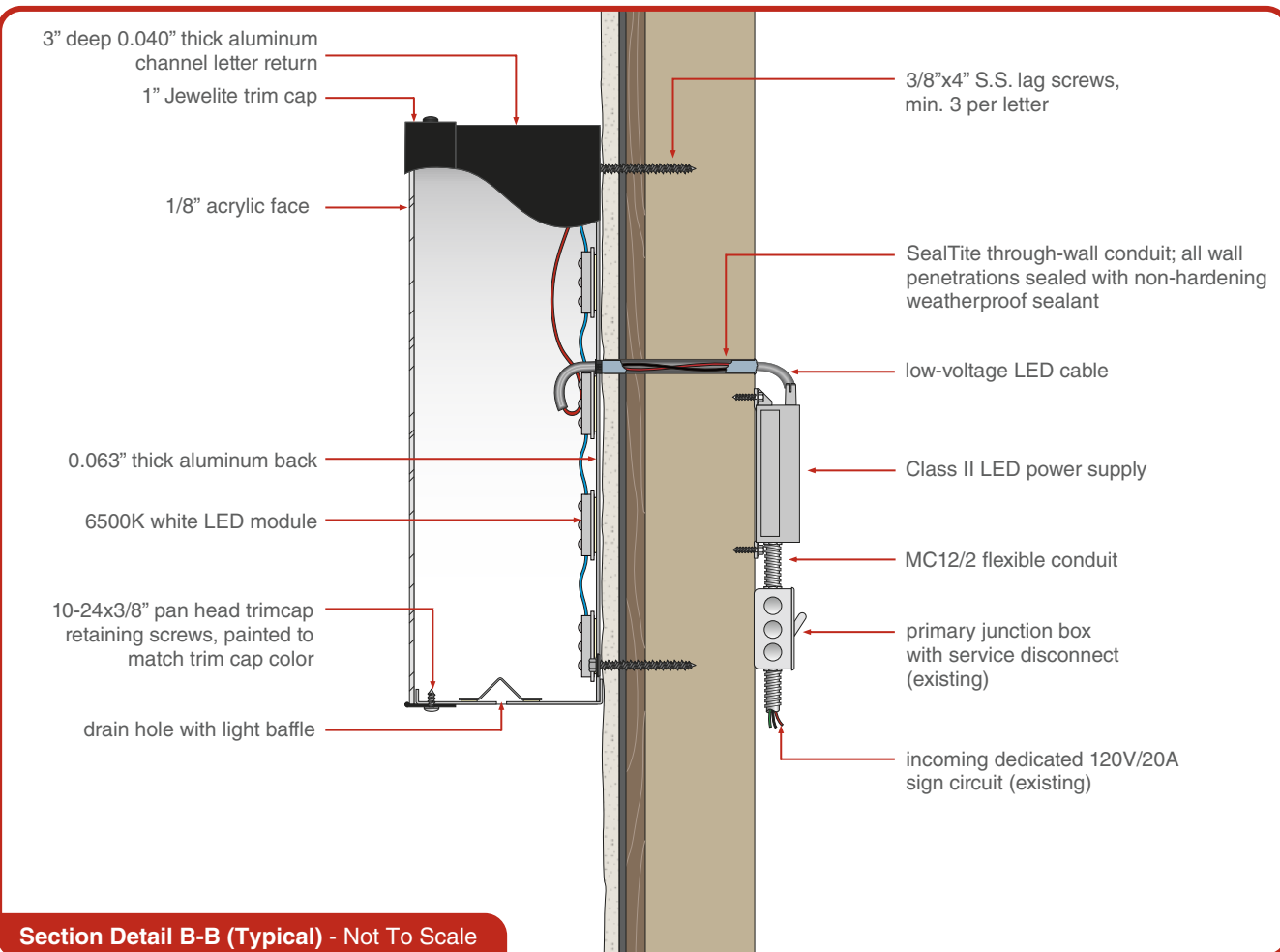
Sign Type A - Elevation View
Scale: Not To Scale



Sign Type B (Elevation): Front Lit Channel Letters, flush-mounted.

Code Allowance: -
Total Sign Area: 72 sq.ft.
 Sign Width: 133"

- 01 Channel Letters (72 Sq. Ft.):**
- Face: 1/8" acrylic with digitally-printed vinyl.
 - Trimcap: 1" jewelite painted black.
 - Return: 3" deep 0.040" thick aluminum painted black.
 - Backs: 0.063" thick aluminum back.
 - Illumination: 6500K white LED's.
 - Power Supplies: 12V, remotely mounted behind wall.
 - Installation: flush mounted to the wall.



- Vinyl Colors:**
- V1 Digitally Printed
- Paint Colors:**
- P1 White
 - P2 Black
 - P3 Pantone 7689 C
 - P4 Pantone 1797 C
 - P5 Pantone 2314 C

Notes:

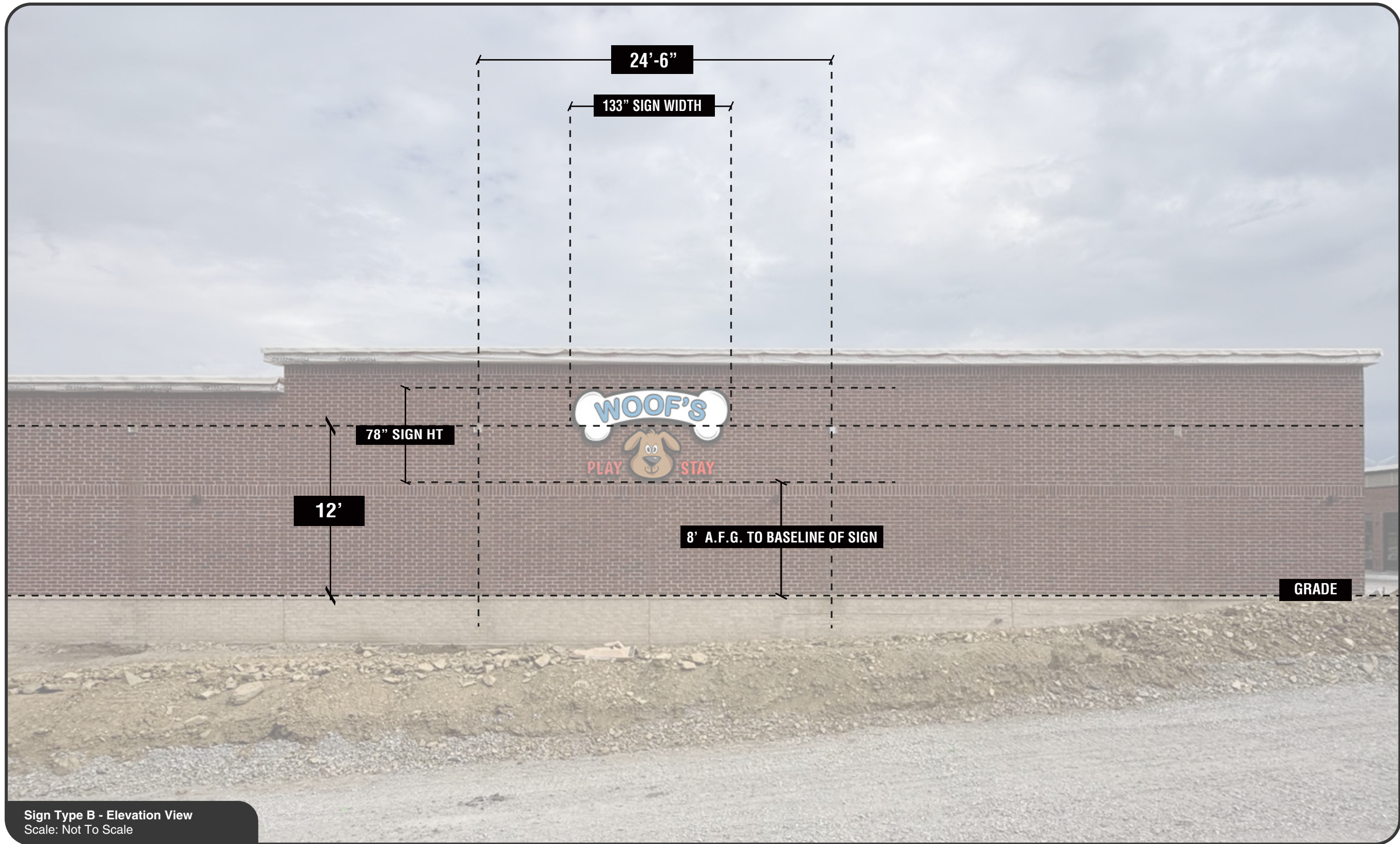
Power Requirements: one (1) 120V/20A dedicated sign circuit that supplies no other load, connected directly to breaker panel, controlled by photocell or timer; power feed must terminate in a junction box within five (5) feet of sign location



Sign Type B - Daytime View
Not To Scale



Sign Type B - Nighttime View
Not To Scale



Sign Type B - Elevation View
Scale: Not To Scale

Thank you!