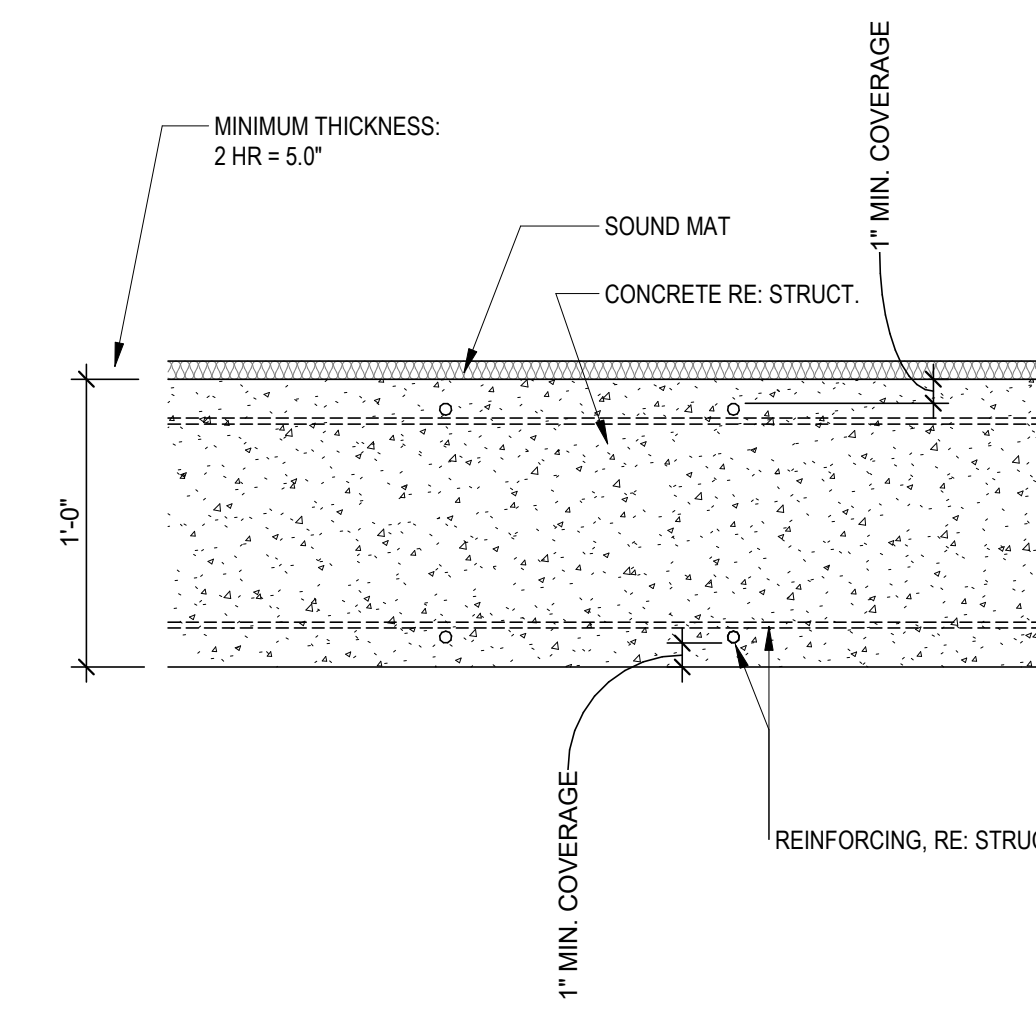


**WALL ASSEMBLY INFORMATION**

IDENTIFICATION	1A	1B	1C
STUD SIZE	4X2	2X4	2X6
THICKNESS	4 5/8"	4 5/8"	6 5/8"
FIRE RATING	0 HR	0 HR	0 HR
FIRE TEST NUMBER	--	--	--
ACOUSTICAL RATING	--	--	--
ACOUSTICAL TEST NUMBER	--	--	--

- ASSEMBLY NOTES**
- PROVIDE WATER RESISTANT GYPSUM BOARD AT WET LOCATIONS
  - OPTION TO PLACE RIGID INSULATION ON EXTERIOR SIDE OF FOUNDATION WATERPROOFING SYSTEM

**W** **ASSEMBLY DETAIL EXT. WOOD STUD WALL**  
1 1/2" = 1'-0" TYPICAL AT ALL EXTERIOR WALLS

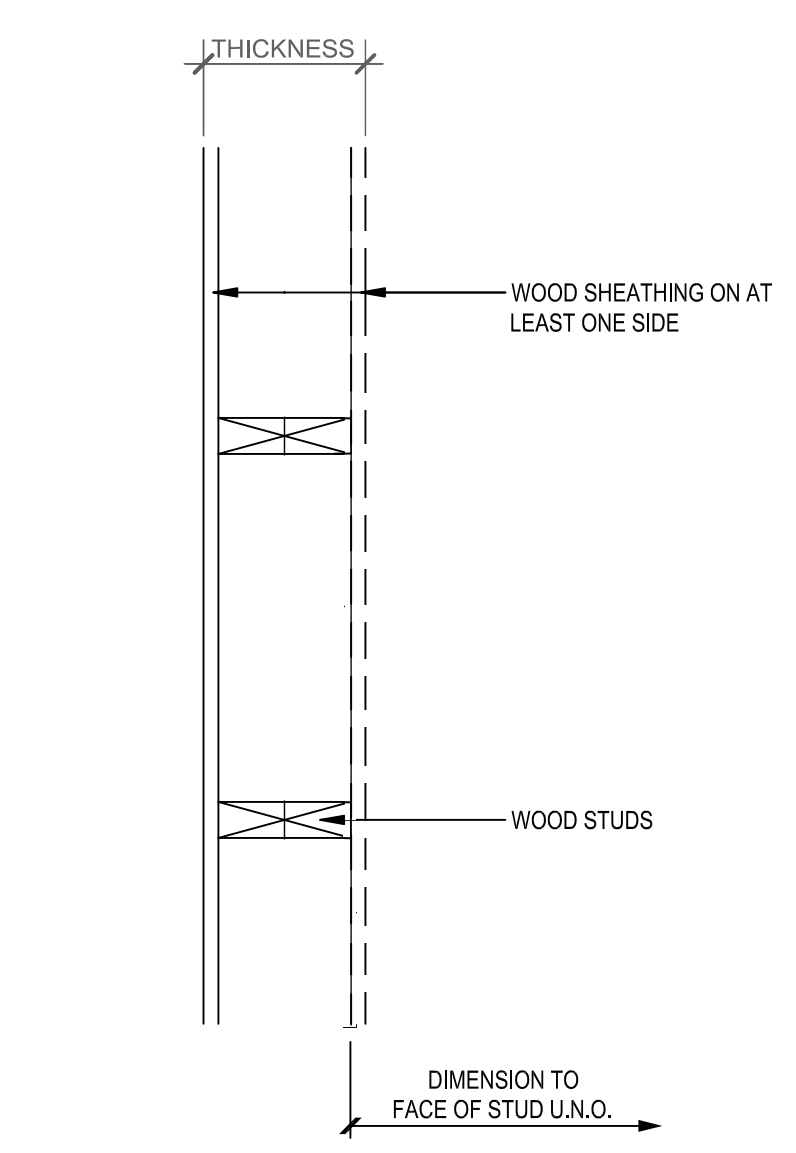


**ASSEMBLY INFORMATION**

IDENTIFICATION	2
FRAMING	NA
THICKNESS	--
FIRE RATING	2 HR
FIRE TEST NUMBER	--
ACOUSTICAL RATING	--
ACOUSTICAL TEST NUMBER	--

- ASSEMBLY NOTES**
- SEE IBC SECTION 721 FOR MORE INFORMATION
  - STRUCTURAL CONCRETE FLOORS SHALL HAVE MIN. FIRE RATING NOTED ABOVE AND COMPLY WITH 2018 IBC.
    - SECTION 720
    - TABLE 721.1(1), ITEM #7-1.2
    - TABLE 721.1(3), ITEM #1-1.1

**S** **2-HR FLOOR/CEILING ASSEMBLY**  
1 1/2" = 1'-0" TYPICAL AT SUSPENDED SLAB

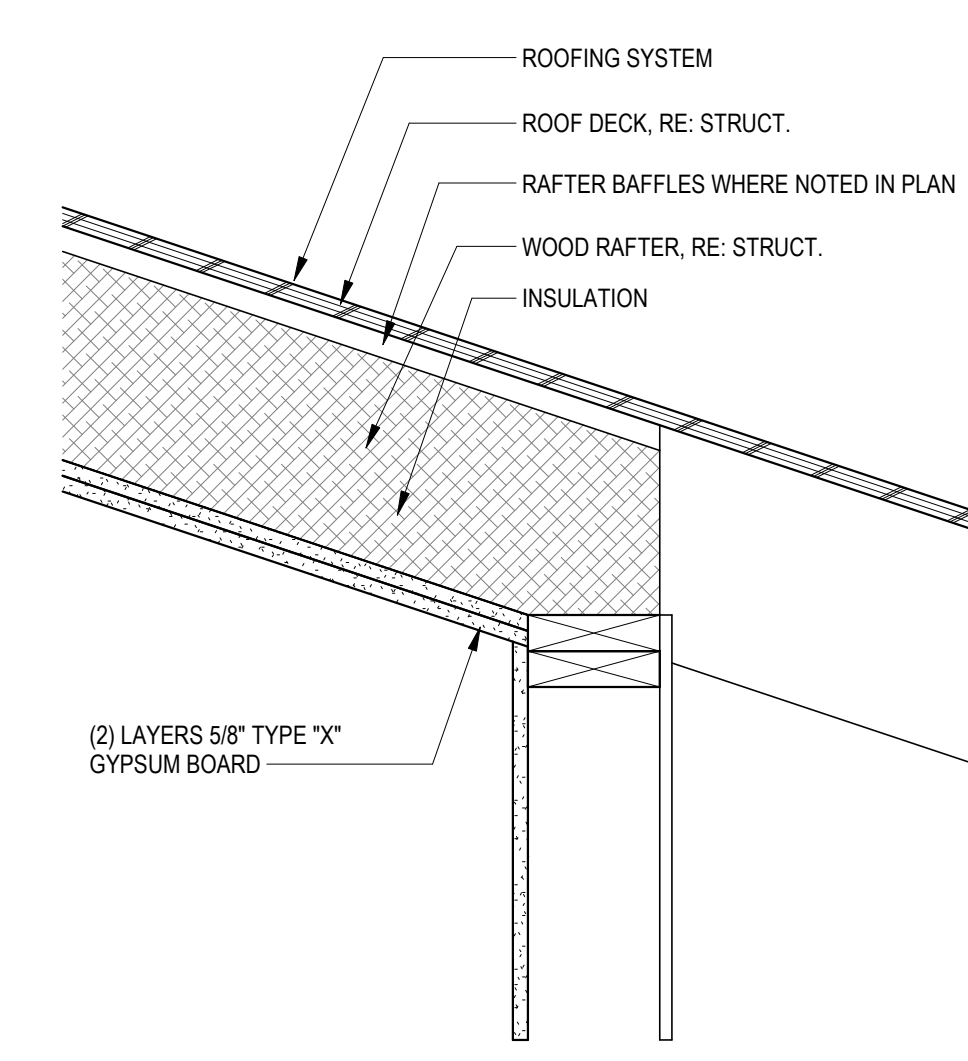


**WALL ASSEMBLY INFORMATION**

IDENTIFICATION	1A	1B
STUD SIZE	2x4	2x6
THICKNESS	4"	6"
FIRE RATING	0 HR	0 HR
FIRE TEST NUMBER	--	--
ACOUSTICAL RATING	--	--
ACOUSTICAL TEST NUMBER	--	--

- ASSEMBLY NOTES**
- NONE

**X** **0-HR INT. WOOD STUD WALL**  
1 1/2" = 1'-0" SEE BUILDING PLANS FOR LOCATIONS

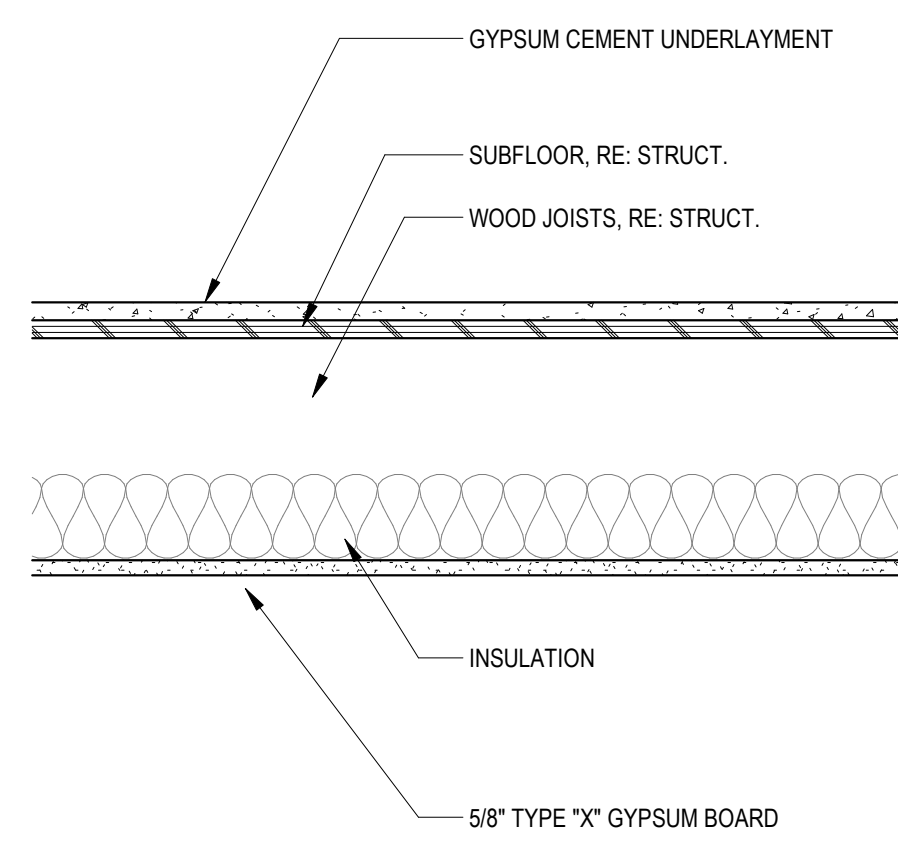


**ASSEMBLY INFORMATION**

IDENTIFICATION	1
FRAMING	STICK
THICKNESS	VARIES
FIRE RATING	1 HR
FIRE TEST NUMBER	--
ACOUSTICAL RATING	--
ACOUSTICAL TEST NUMBER	--

- ASSEMBLY NOTES**
- ASSEMBLY CALCULATED PER SECTION 722.5, 2018 IBC
  - SUPPORT ALL EDGES OF GYP.
  - INSTALL W/ LONG DIMENSION PERPENDICULAR TO JOISTS
  - BAFFLE & VENT WHERE FEASIBLE. FOAM WHERE NOT VENTED. FUR-DOWN AND/OR FOAM TO ACHIEVE R-38

**V** **1-HR ROOF/CEILING ASSEMBLY**  
1 1/2" = 1'-0" TYPICAL AT VAULTED CEILINGS

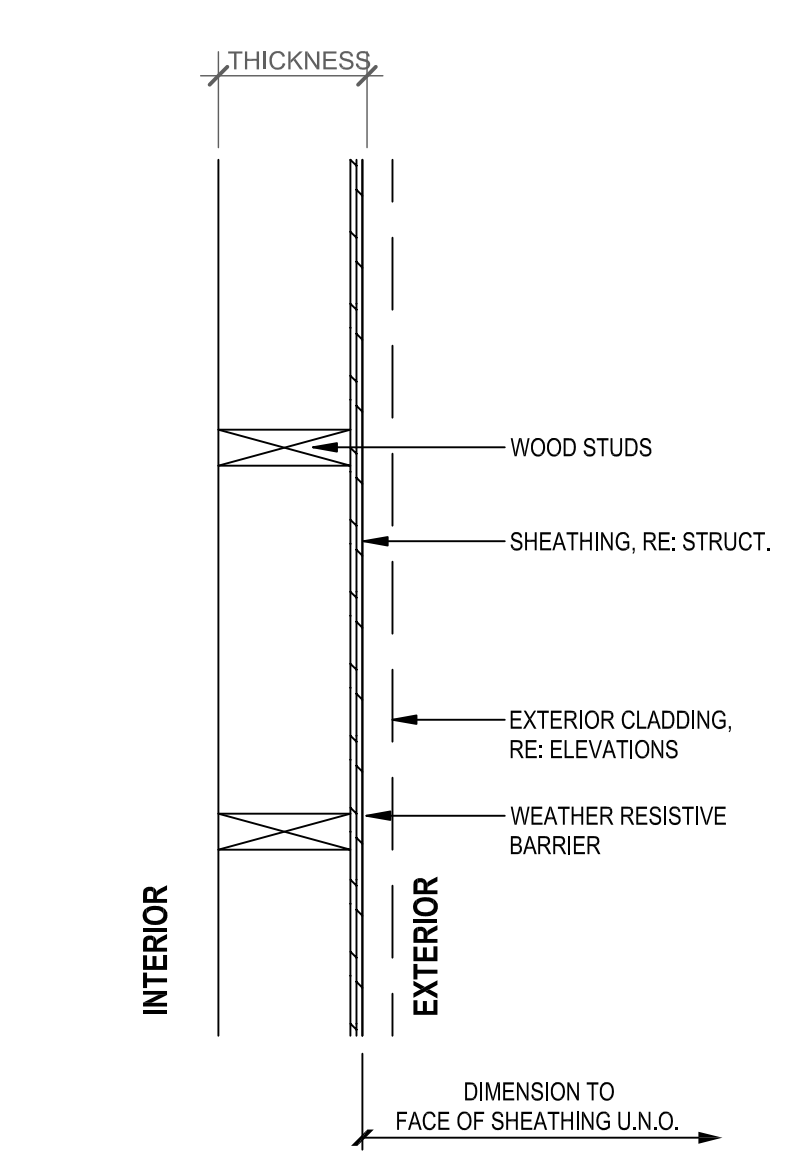


**ASSEMBLY INFORMATION**

IDENTIFICATION	1
FRAMING	2X10
THICKNESS	--
FIRE RATING	1 HR
FIRE TEST NUMBER	UL L501
ACOUSTICAL RATING	--
ACOUSTICAL TEST NUMBER	--

- ASSEMBLY NOTES**
- ...

**R** **1-HR FLOOR/CEILING ASSEMBLY**  
1 1/2" = 1'-0" TYPICAL AT CORRIDOR/CORRIDOR

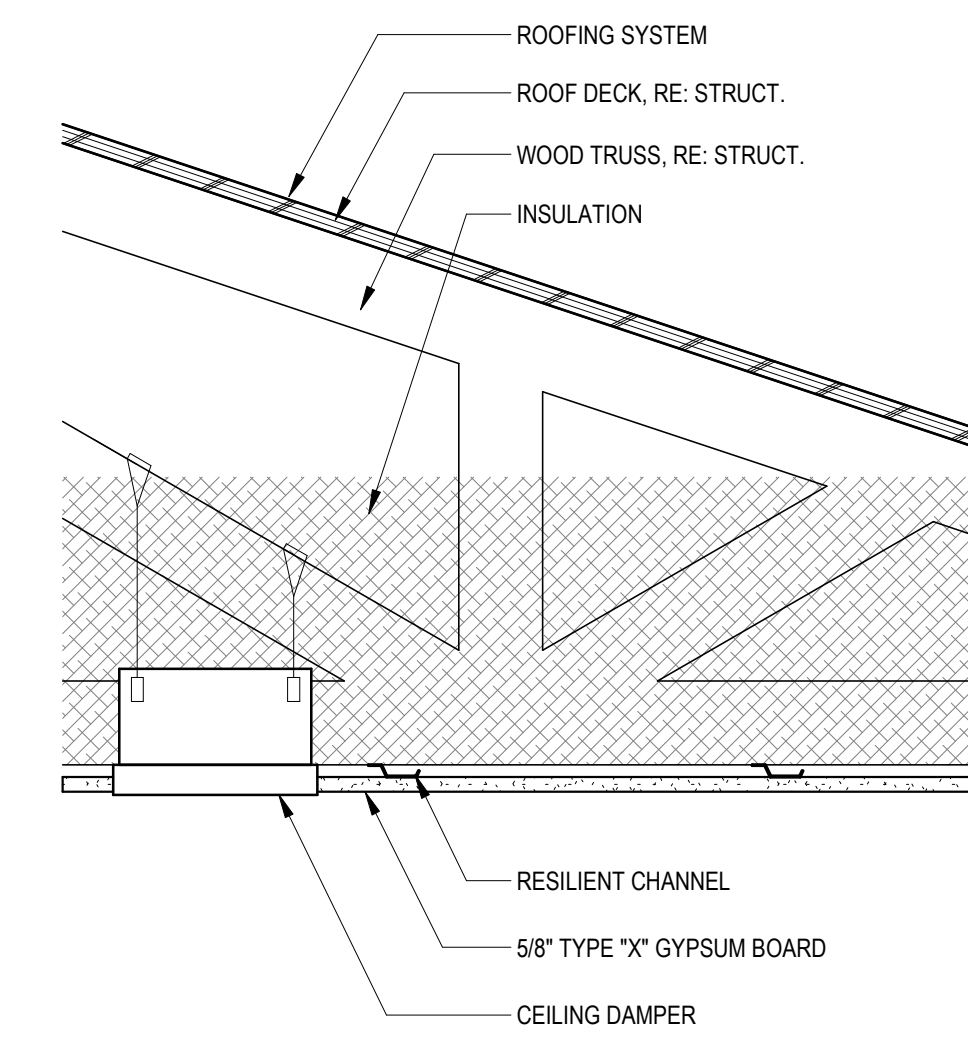


**WALL ASSEMBLY INFORMATION**

IDENTIFICATION	1A	1B
STUD SIZE	2x4	2x6
THICKNESS	4"	6"
FIRE RATING	0 HR	0 HR
FIRE TEST NUMBER	--	--
ACOUSTICAL RATING	--	--
ACOUSTICAL TEST NUMBER	--	--

- ASSEMBLY NOTES**
- NONE

**Y** **0-HR EXT. WOOD STUD WALL**  
1 1/2" = 1'-0" SEE BUILDING PLANS FOR LOCATIONS

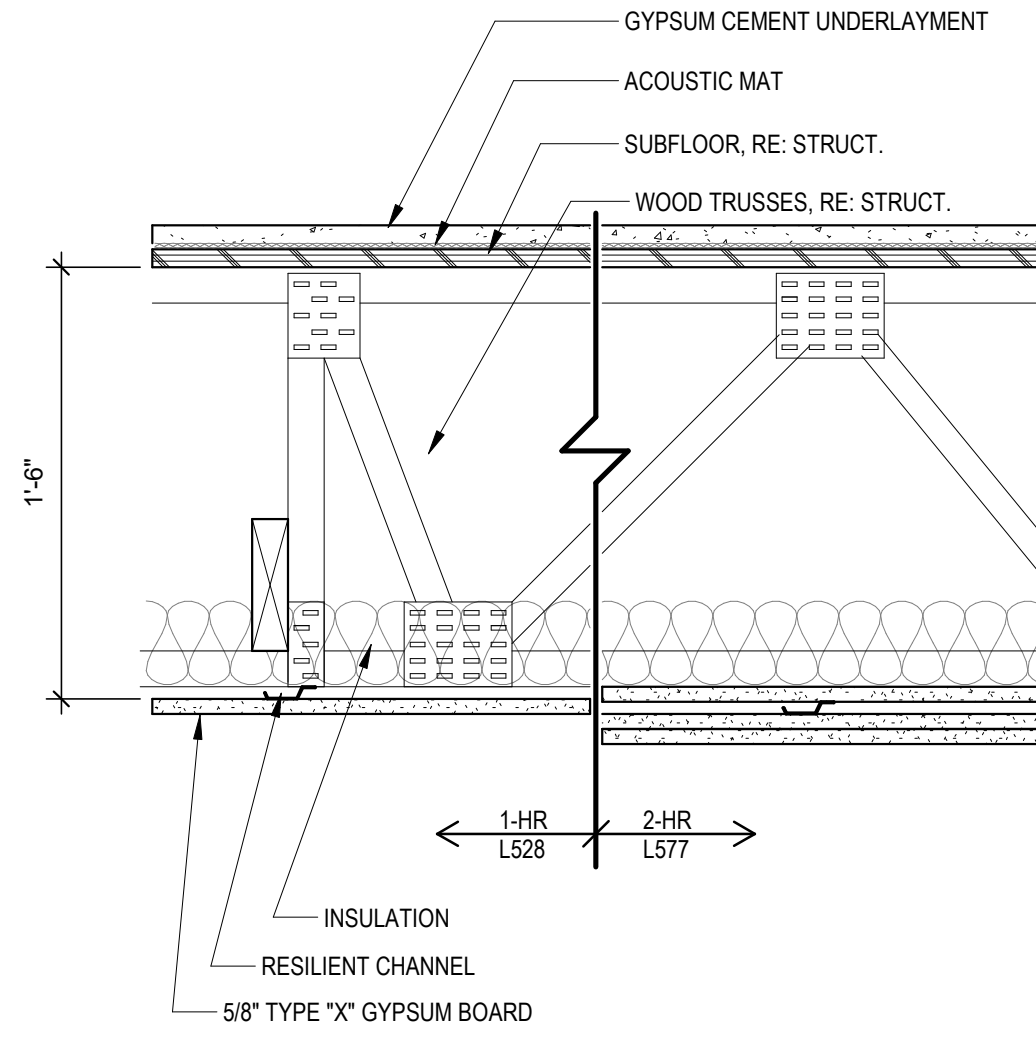


**ASSEMBLY INFORMATION**

IDENTIFICATION	1
FRAMING	WOOD TRUSS
THICKNESS	VARIES
FIRE RATING	1 HR
FIRE TEST NUMBER	UL P566
ACOUSTICAL RATING	--
ACOUSTICAL TEST NUMBER	--

- ASSEMBLY NOTES**
- ...

**T** **1-HR ROOF/CEILING ASSEMBLY**  
1 1/2" = 1'-0" TYPICAL AT ROOF TRUSSES



**ASSEMBLY INFORMATION**

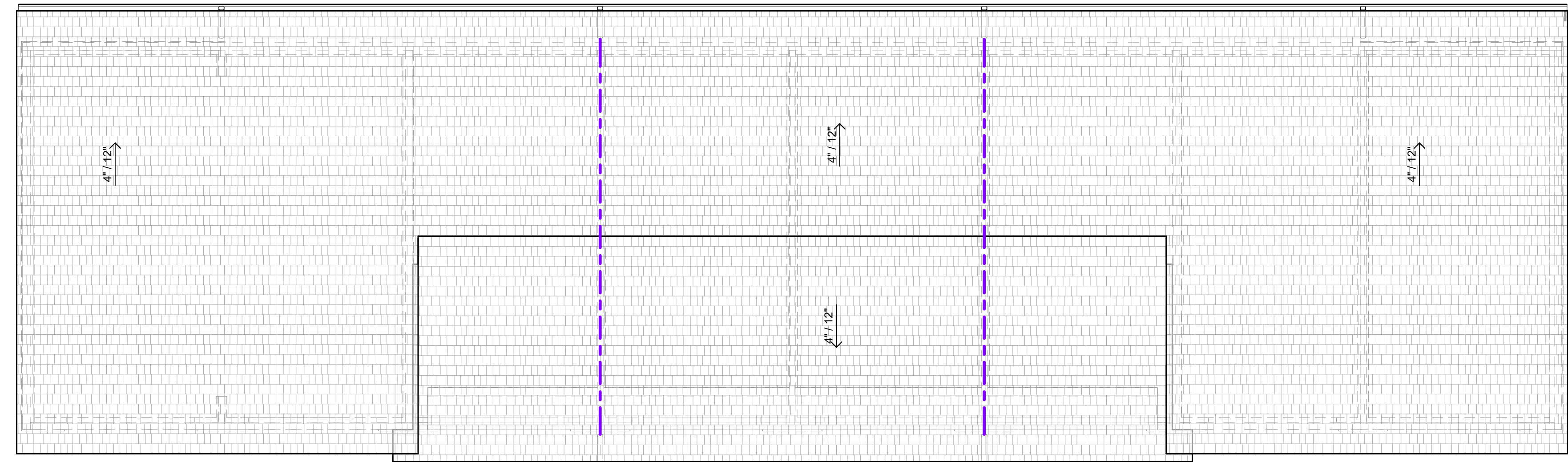
IDENTIFICATION	1	2	3
FRAMING	WOOD TRUSS	WOOD TRUSS	WOOD TRUSS
THICKNESS	--	--	--
FIRE RATING	0 HR	1 HR	2 HR
FIRE TEST NUMBER	UL L528	UL L528	UL L577
ACOUSTICAL RATING	50	50	50
ACOUSTICAL TEST NUMBER	--	--	--

- ASSEMBLY NOTES**
- ...

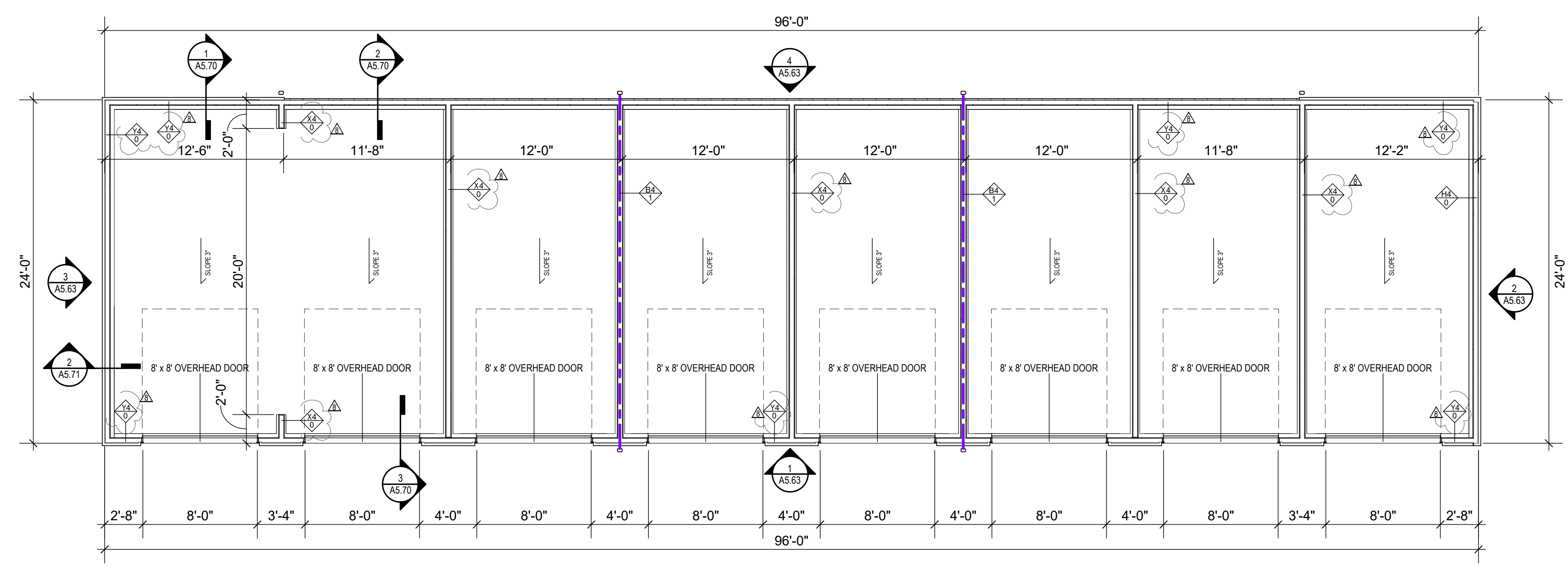
**Q** **1-HR FLOOR/CEILING ASSEMBLY**  
1 1/2" = 1'-0" TYPICAL AT UNIT/UNIT



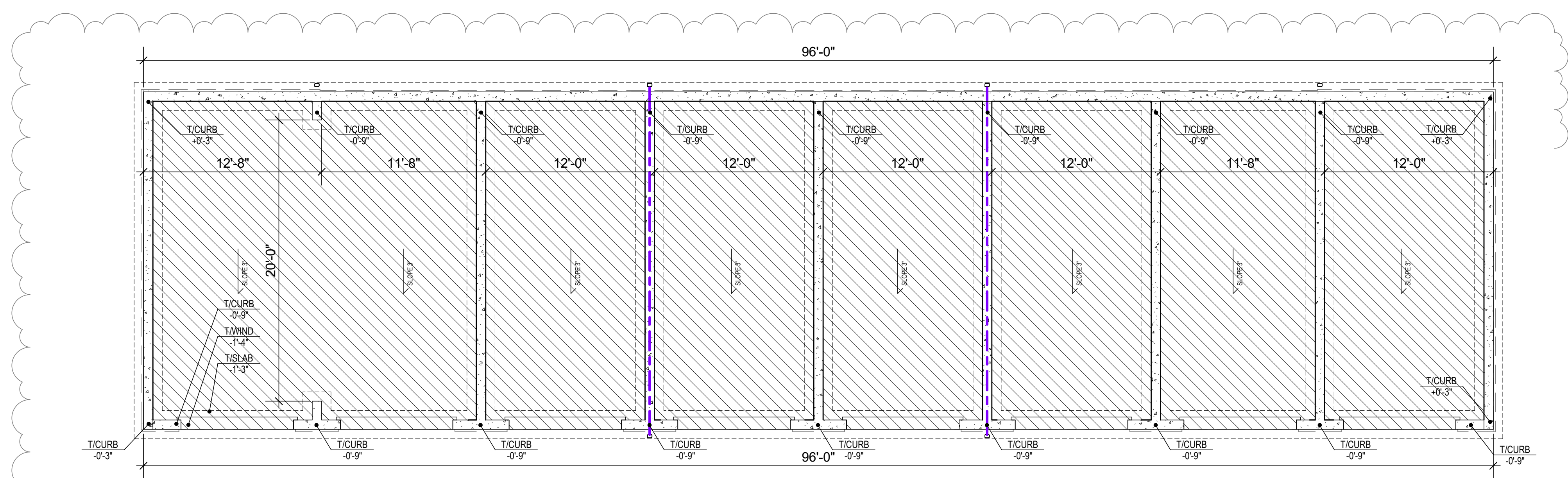
FOR GARAGE 4C, SEA LEVEL = 1021.9'  
SEE CIVIL



3 DET. GAR. 4C ROOF PLAN  
3/16" = 1'-0"



2 DET. GAR. 4C FLOOR PLAN  
3/16" = 1'-0"



1 DET. GAR. 4C SLAB PLAN  
3/16" = 1'-0"

RELEASED FOR CONSTRUCTION  
As Noted on Plans Review  
Development Services Department  
Lee's Summit, Missouri

ARCHITECTURE  
LANDSCAPE  
ARCHITECTURE  
ENERGY SERVICES

**NSPJ**  
ARCHITECTS<sup>SM</sup>  
3515 W. 75TH ST., SUITE 201  
PRAIRIE VILLAGE, KS 66208

CLINT  
EDD  
EVAN  
NUMBER  
4-075  
10/16/25

A NEW DEVELOPMENT FOR:  
**RESIDENCES AT BLACKWELL**  
50 HWY & BLACKWELL  
LEE'S SUMMIT, MISSOURI

DRAWING RELEASE LOG

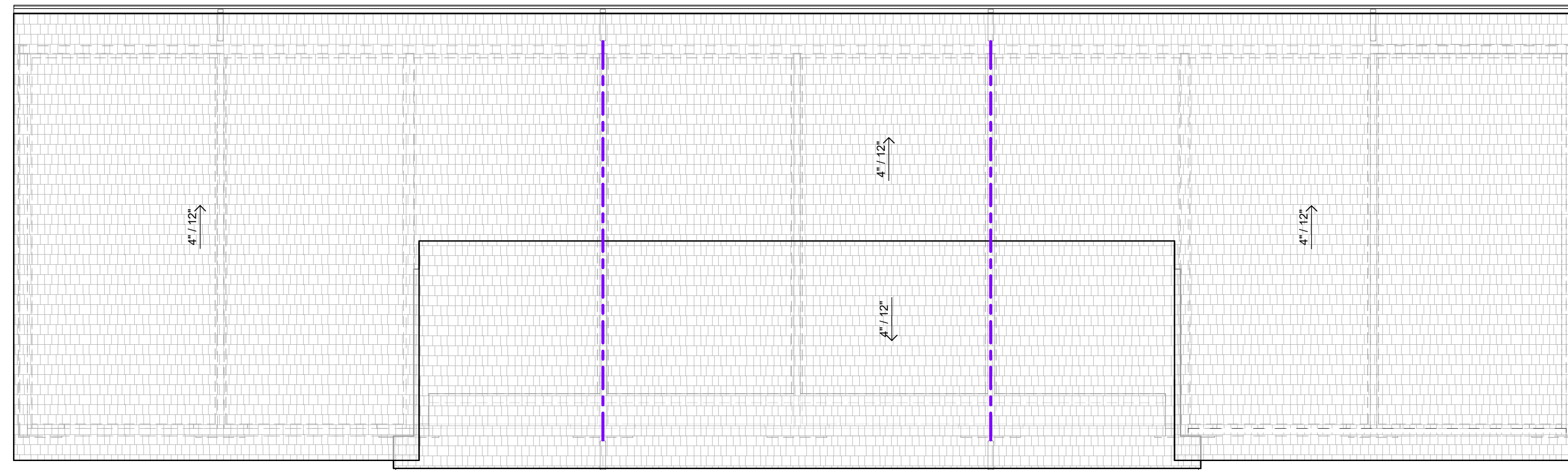
- 03.24.2023 - PERMIT SUBMITTAL
- 04.05.2023 - ADD. #1

REVISIONS:

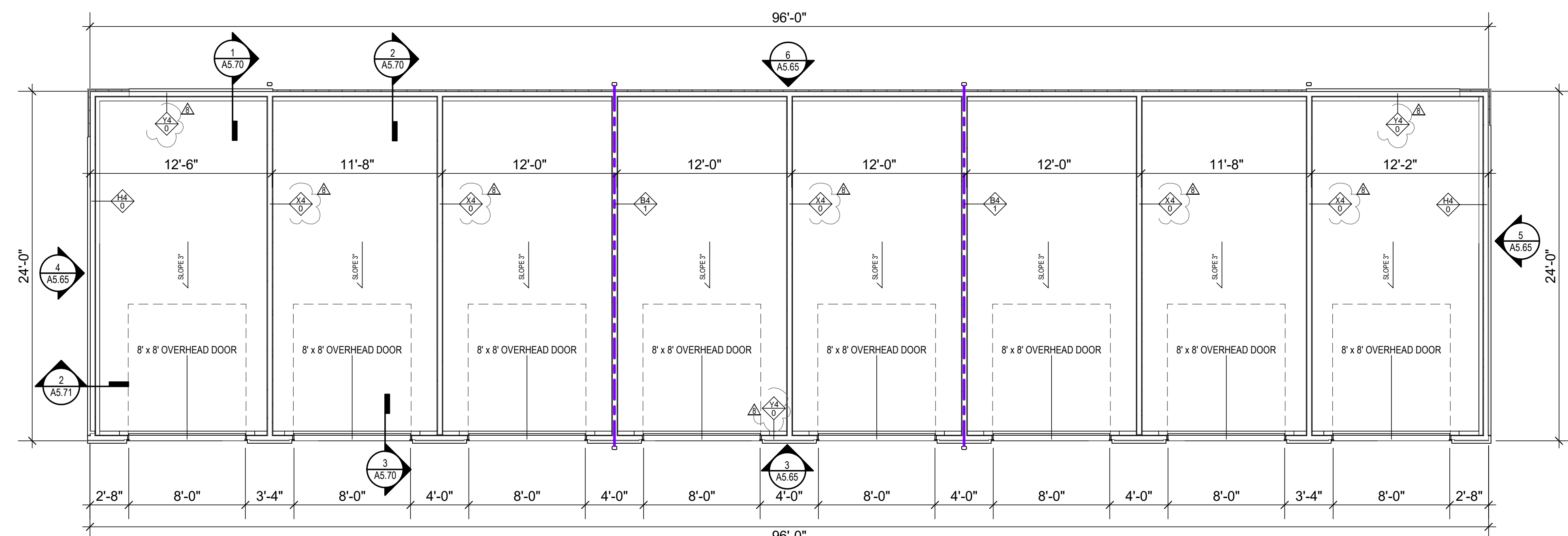
2	11.17.23	Addendum #6
8	10.08.25	Addendum #12

DATE:  
03.24.2023  
JOB NO.  
696521  
DRAWN BY:  
Author  
SHEET NO.

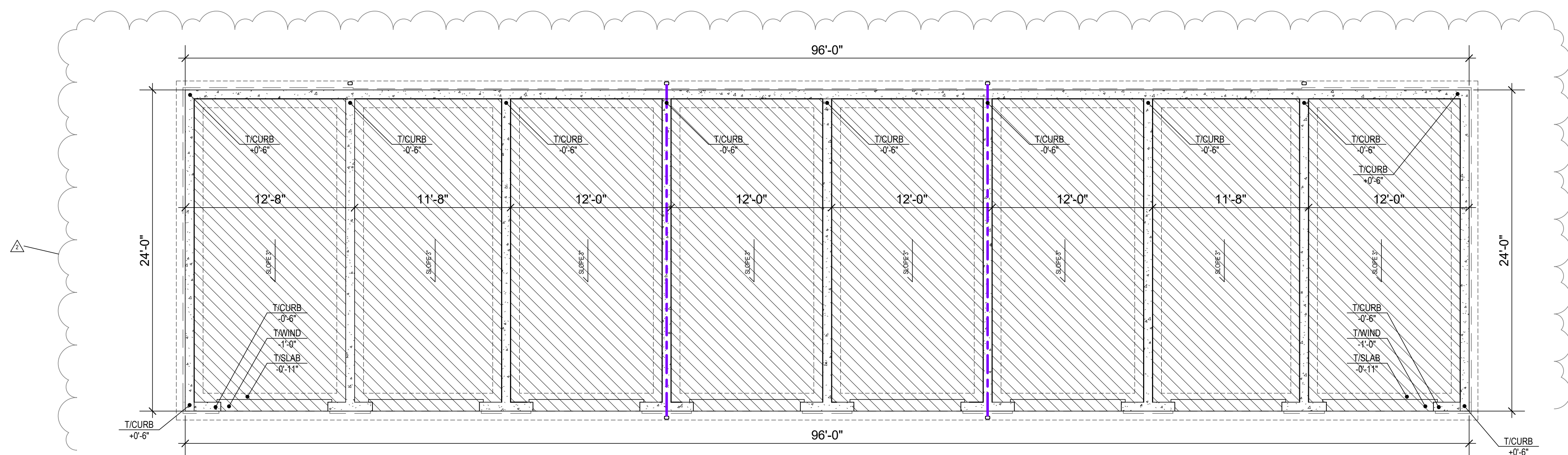
PERMIT SET **A5.62**



3 DET. GAR. 3C, 4A, & 4B ROOF PLAN  
3/16" = 1'-0"



2 DET. GAR. 3C, 4A, & 4B FLOOR PLAN  
3/16" = 1'-0"



1 DET. GAR. 3C, 4A, & 4B SLAB PLAN  
3/16" = 1'-0"

FOR GARAGE 3C, SEA LEVEL = 1023.26'  
FOR GARAGE 4A, SEA LEVEL = 1022.66'  
FOR GARAGE 4B, SEA LEVEL = 1022.16'  
SEE CIVIL

**NSPJ**  
ARCHITECTS  
3515 W. 75TH ST., SUITE 201  
PRAIRIE VILLAGE, KS 66208



A NEW DEVELOPMENT FOR:  
**RESIDENCES AT BLACKWELL**  
50 HWY & BLACKWELL  
LEE'S SUMMIT, MISSOURI

DRAWING RELEASE LOG  
• 03.24.2023 - PERMIT SUBMITTAL  
• 04.05.2023 - ADD. #1

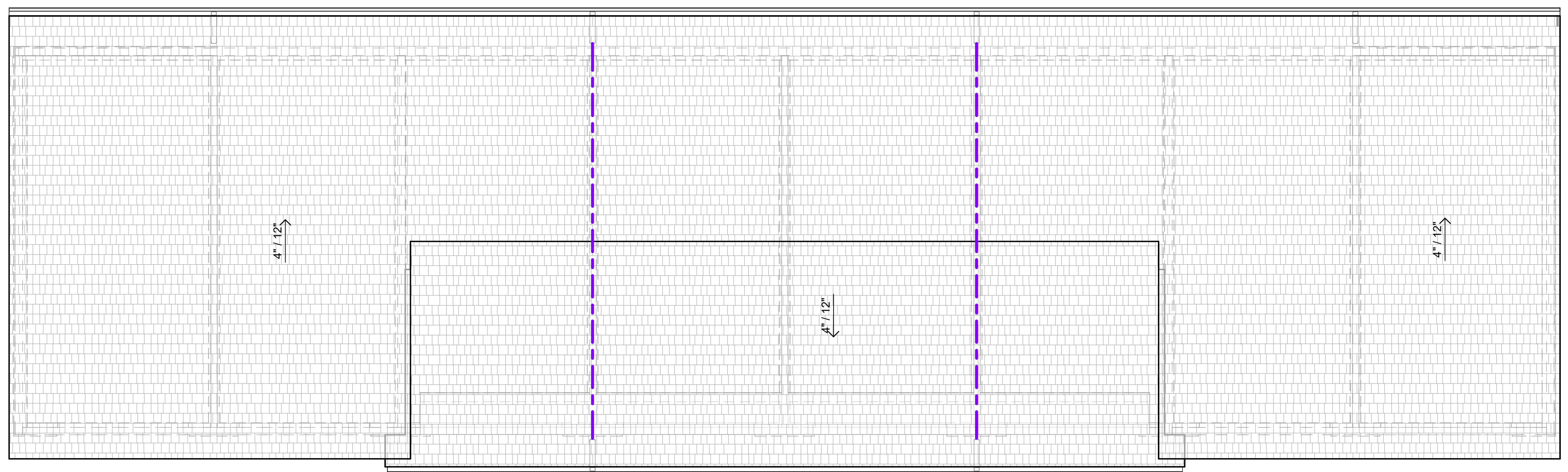
REVISIONS:  
2 11.17.23 Addendum #6  
8 10.08.25 Addendum #12

DATE:  
03.24.2023  
JOB NO.  
696521  
DRAWN BY:  
Author  
SHEET NO.

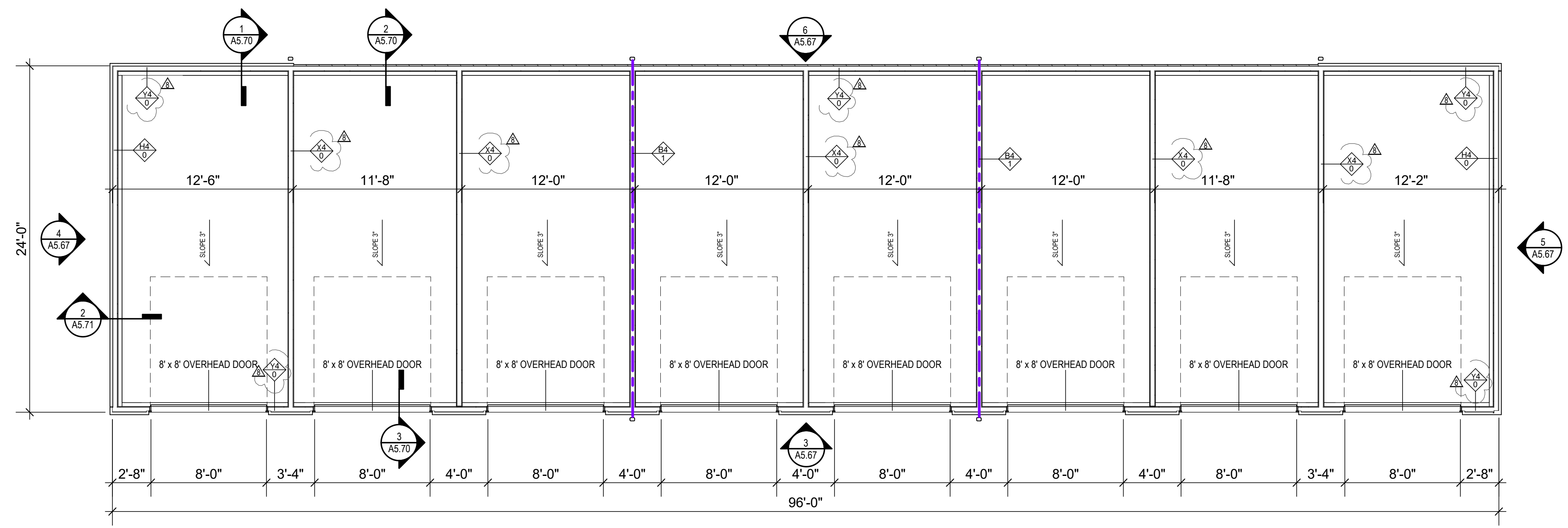
PERMIT SET **A5.64**



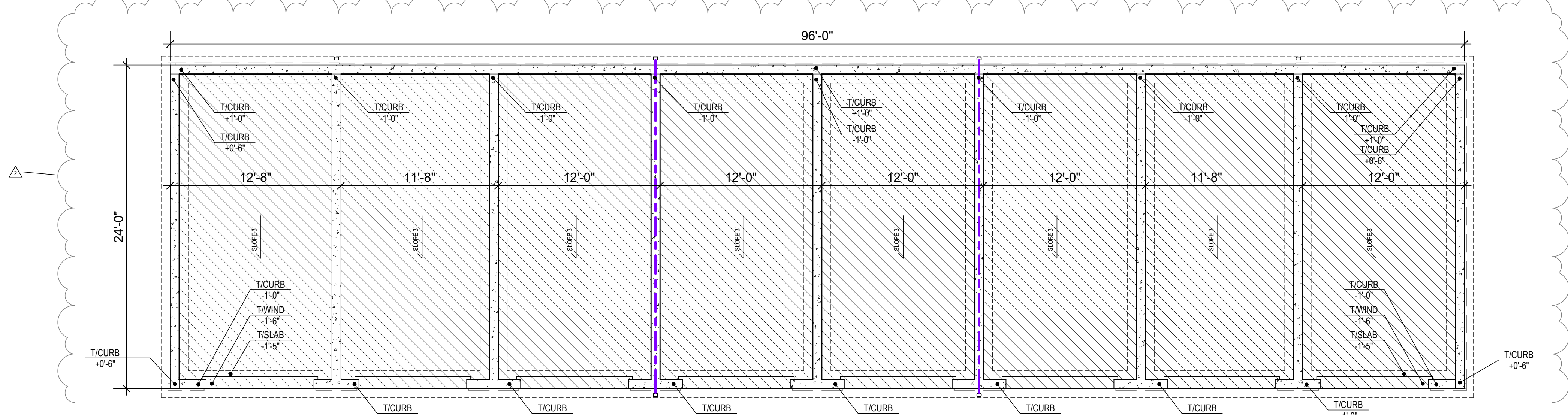
FOR GARAGE 3A & 3B, SEA LEVEL = 1024.46'  
SEE CIVIL



3 DET. GAR. 3A & 3B ROOF PLAN  
3/16" = 1'-0"



2 DET. GAR. 3A & 3B FLOOR PLAN  
3/16" = 1'-0"



1 DET. GAR. 3A & 3B SLAB PLAN  
3/16" = 1'-0"

A NEW DEVELOPMENT FOR:  
**RESIDENCES AT BLACKWELL**  
50 HWY & BLACKWELL  
LEE'S SUMMIT, MISSOURI

DRAWING RELEASE LOG

- 03.24.2023 - PERMIT SUBMITTAL
- 04.05.2023 - ADD. #1

REVISIONS:

2	11.17.23	Addendum #6
8	10.08.25	Addendum #12

DATE:  
03.24.2023  
JOB NO.  
696521  
DRAWN BY:  
Author  
SHEET NO.

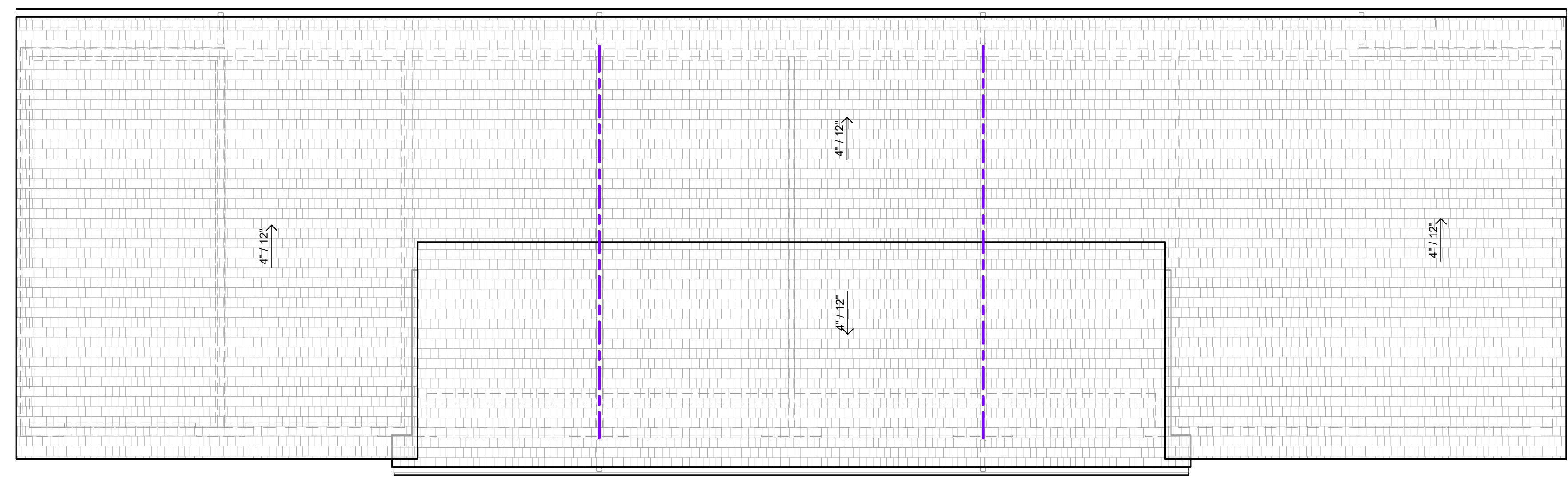
PERMIT SET **A5.66**

ARCH D 24'-35'

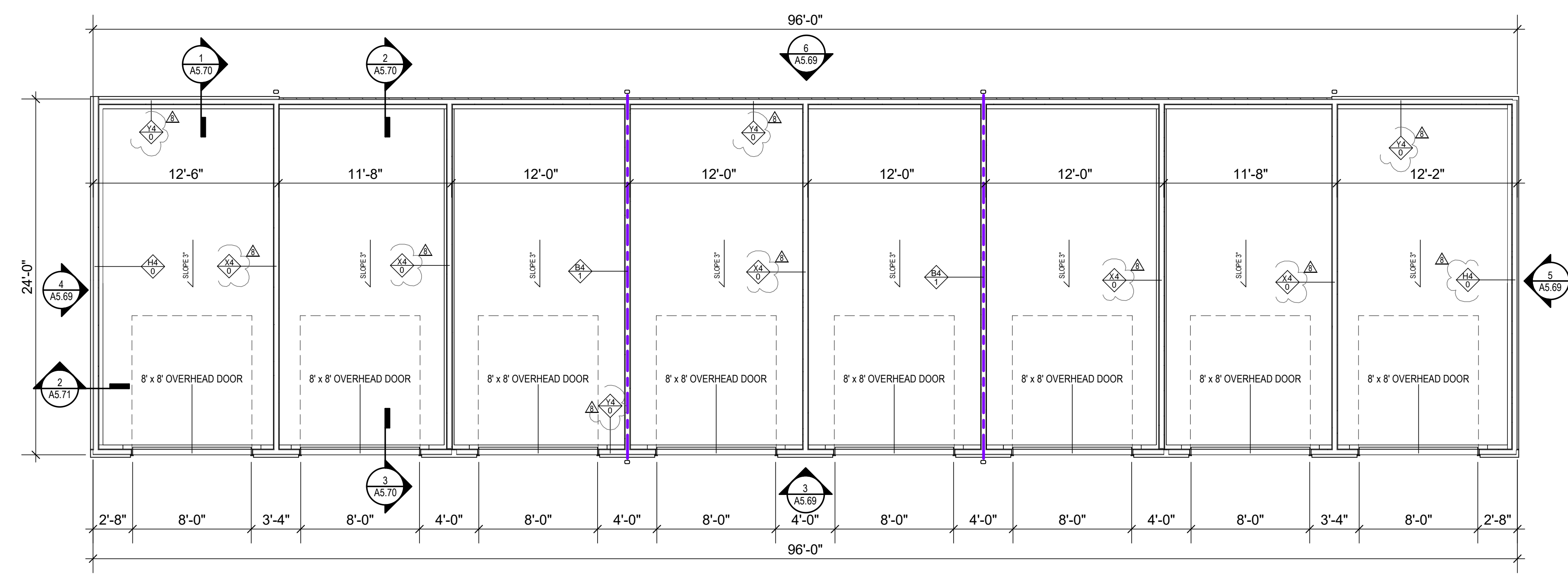
RELEASED FOR CONSTRUCTION  
As Noted on Plans Review  
Development Services Department  
Lee's Summit, Missouri  
P. 913.831.1100  
F. 913.831.1100  
NSPJ ARCHITECTS  
© COPYRIGHT

FOR GARAGE 1B, SEA LEVEL = 1013.5'  
FOR GARAGE 1C, SEA LEVEL = 1015.3'  
FOR GARAGE 2A, SEA LEVEL = 1017.1'  
FOR GARAGE 2B, SEA LEVEL = 1018.9'  
FOR GARAGE 2C, SEA LEVEL = 1021.7'  
SEE CIVIL

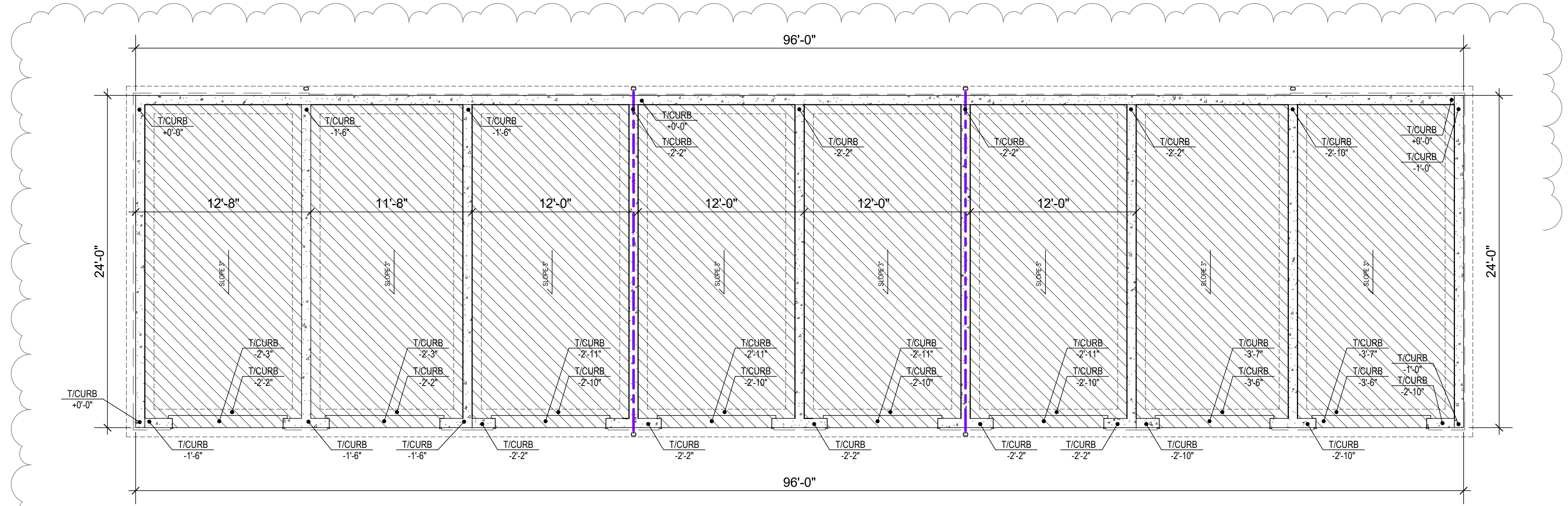
ARCHITECTURE  
LANDSCAPE  
ARCHITECTURE  
ENERGY SERVICES  
NSPJ ARCHITECTS  
ARCHITECTS  
3515 W. 75TH ST., SUITE 201  
PRAIRIE VILLAGE, KS 66208



3 DET. GAR. ROOF PLAN  
3/16" = 1'-0"



2 DET. GAR. 1B, 1C, 2A, 2B, & 2C FLOOR PLAN  
3/16" = 1'-0"



1 DET. GAR. 1B, 1C, 2A, 2B, & 2C SLAB PLAN  
3/16" = 1'-0"

A NEW DEVELOPMENT FOR:  
**RESIDENCES AT BLACKWELL**  
50 HWY & BLACKWELL  
LEE'S SUMMIT, MISSOURI

DRAWING RELEASE LOG  
• 03.24.2023 - PERMIT SUBMITTAL  
• 04.05.2023 - ADD. #1

REVISIONS:  
2 11.17.23 Addendum #6  
8 10.08.25 Addendum #12

DATE:  
03.24.2023  
JOB NO.  
696521  
DRAWN BY:  
Author  
SHEET NO.

PERMIT SET **A5.68**

11/27/2023 4:52:07 PM

C:\Users\rodent\OneDrive - NSPJ Architects\Documents\6965-CliffirRely\GARAGES\_RZ2\_1000\15193.rvt