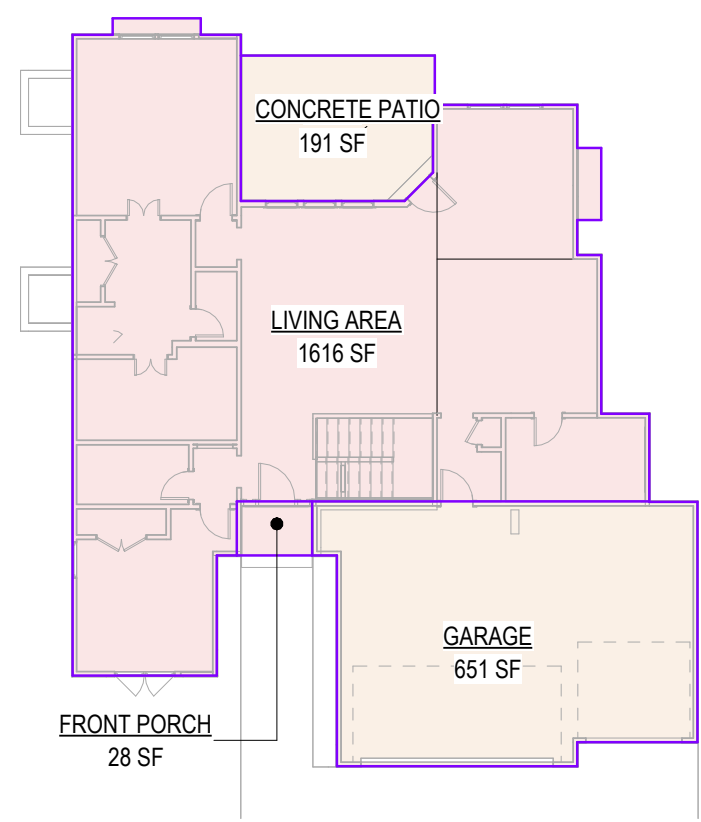
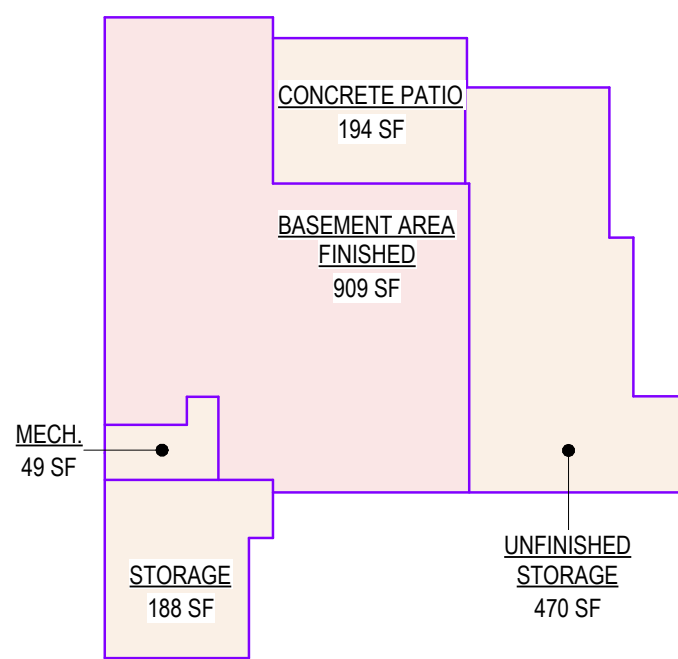


WOODLAND MASTER PLAN

ADDRESS : 2233 SW Heartland Ct., Lees Summit, MO
LOT : HF 210



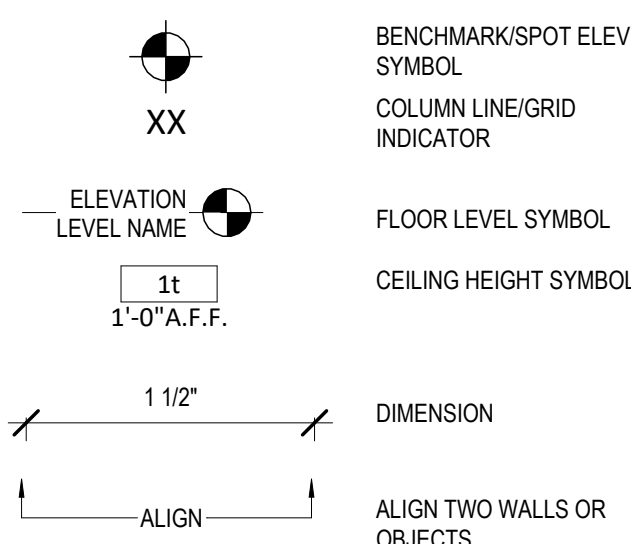
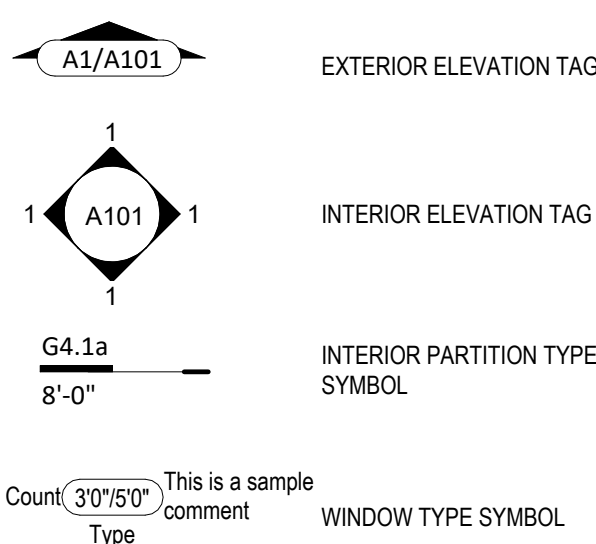
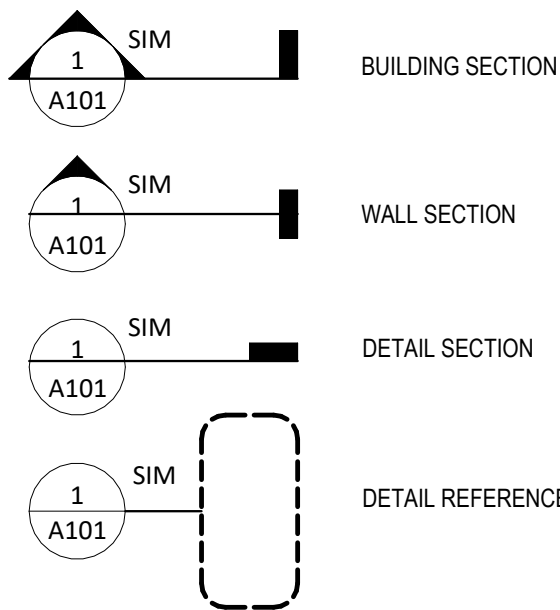
5 Main Level Area Plan
1/16" = 1'-0"



4 Basement Area Plan
1/16" = 1'-0"

AREA - Storage	
FINISHED	
LIVING AREA	1616 SF
BASEMENT AREA FINISHED	909 SF
	2526 SF
UNFINISHED	
GARAGE	651 SF
CONCRETE PATIO	191 SF
FRONT PORCH	28 SF
UNFINISHED STORAGE	470 SF
MECH.	49 SF
CONCRETE PATIO	194 SF
STORAGE	188 SF
	4792 SF
	1578 SF

Sheet List	
Sheet No	Sheet Name
00	Cover
A101	Main Base Elevation
A201	Elevation options
A301	Full Basement side Elevation options
A302	Daylight Basement Side elevations
A303	Walkout Side elevations
A401	Foundation Plan
A501	Basemenet Floor Plan
A601	Floor Plan -Main Level
A602	Floor Plan -Main Level (Full Basement & Daylight Options)
A701	Floor Plan - Roof Plan
A801	POD Options
A802	POD Options
A803	<varies>
A804	POD Options
A805	POD Options
A901	Details
A902	Details
A903	Details
E101	RCP/Electrical Plan
E102	RCP/Electrical Plan
M101	HVAC Plans
P101	Plumbing Plans



General Information

- Whole House Mechanical Ventilation System is required for any dwelling with air infiltration at a rate of less than 5 air changes per hour (at ACH50 standard R303.4).
- Carbon monoxide detectors required (R315)
- Steel columns shall be minimum schedule 40 (R507.2)
- Deck Ledger attachment to house shall be per Tables 507.9.1.3.
- New provisions for attachment of rafters, trusses and roof beams. (R802.3 and R802.11)
- Programmable thermostat required (N1103.1.1)
- Air handlers shall be rated for Maximum 2% air leakage rate (N1103.2.2.1)
- Building cavities used as return air plenums shall be sealed to prevent leakage across the thermal envelope. (N1103.2.3)
- Certain hot water pipes shall be insulated (N1103.4)
- All exhaust fans shall terminate to the building exterior (M1507.2)
- Makeup air system required for kitchen exhaust hoods that exceed 400 CFM M1503.4
- Building cavities in a thermal envelope wall (including the wall between the house and garage) shall not be used as return air plenums (unless the required insulation and air barrier are maintained) (M1601.1.1.#7.5)
- An air handling system shall not serve both the living space and the garage (M1601.6)
- A concrete-Encased grounding electrode ("UFER Ground") connection complies with the requirements of the 2018 IRC Section E3608.1.2 in providing a connection with no less than the required minimum of steel.
- Compliance with the requirements and show connection as needed for roof beam, trus, rafter, and girder connections for uplift per IRC 802.11
- DASMA 115 MPH Rated Garage doors
- Compliant with the Physical Security Ordinance in the Kansas City Building and Rehabilitation Code, section 329 (Information Bulletin 161).
- Compliant with the requirements of section 308 of the 2018 IRC for safety glazing.
- Studs will be continuous from floor to ceiling diaphragm/Roof as per 2018 IRC 602.3

2018 IRC BUILDING CODE COMPLIANCE
THESE DRAWINGS HAVE BEEN PREPARED WITH RESPECT TO COMPLIANCE OF THE 2018 IRC AND NEC 2017 ANY REFERENCES FOUND NOT CORRECTLY IDENTIFIED TO THESE CODES SHALL BE BROUGHT TO THE ATTENTION OF SSIONAL THE DESIGN PROFESSIONAL



WOODLAND MASTER PLAN



Original Issue Date: 24/03/27
REVISIONS

Number Description Date

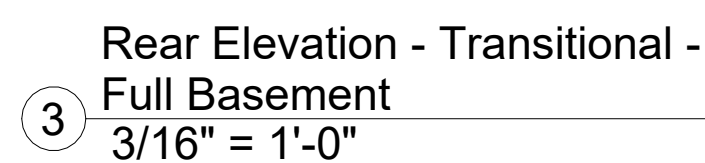
ADDRESS : 2233 SW Heartland Ct.
LOT : Hook Farms 210, Lees Summit, MO

PLAN DESCRIPTION: Cover

00

Project No.

RELEASE FOR CONSTRUCTION
AS NOTED FOR PLAN REVIEW
DEVELOPMENT SERVICES
LEES SUMMIT, MISSOURI
09/26/2025



RELEASE FOR CONSTRUCTION
AS NOTED FOR PLAN REVIEW
DEVELOPMENT SERVICES
LEE'S SUMMIT, MISSOURI
09/26/2025



SEPTEMBER 23, 2025

DRAWING TITLE

Side Elevations - Transitional - Full
Basement

DATE ISSUED

A301.1

A circular professional seal for Aaron J. Brown, a Registered Architect in the State of Missouri. The seal features the text "STATE OF MISSOURI" at the top, "AARON J. BROWN" in the center, "NUMBER 1215" below the name, and "REGISTERED ARCHITECT" at the bottom. A stylized graphic of the state of Missouri is positioned behind the name. The seal is stamped in black ink on a white background.

REVISIONS

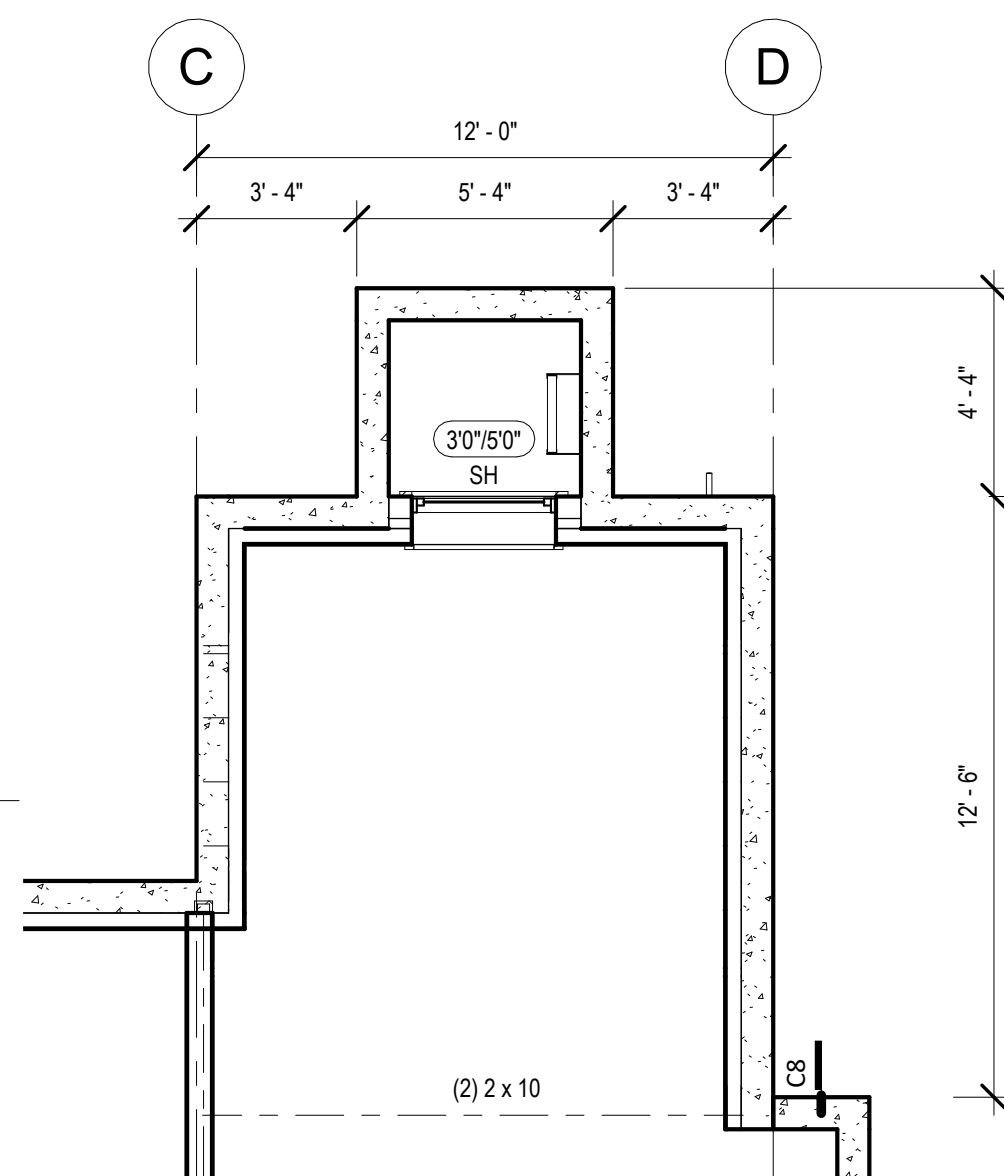
PROJECT

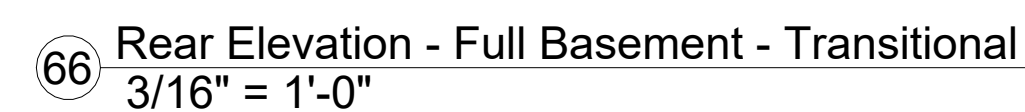
ADDRESS : 2233 SW Heartland Ct.
LOT : Hook Farms 210, Lees Summit, MO

Basement Floor Plan - Full Basement

NORTH
↑


A501.1



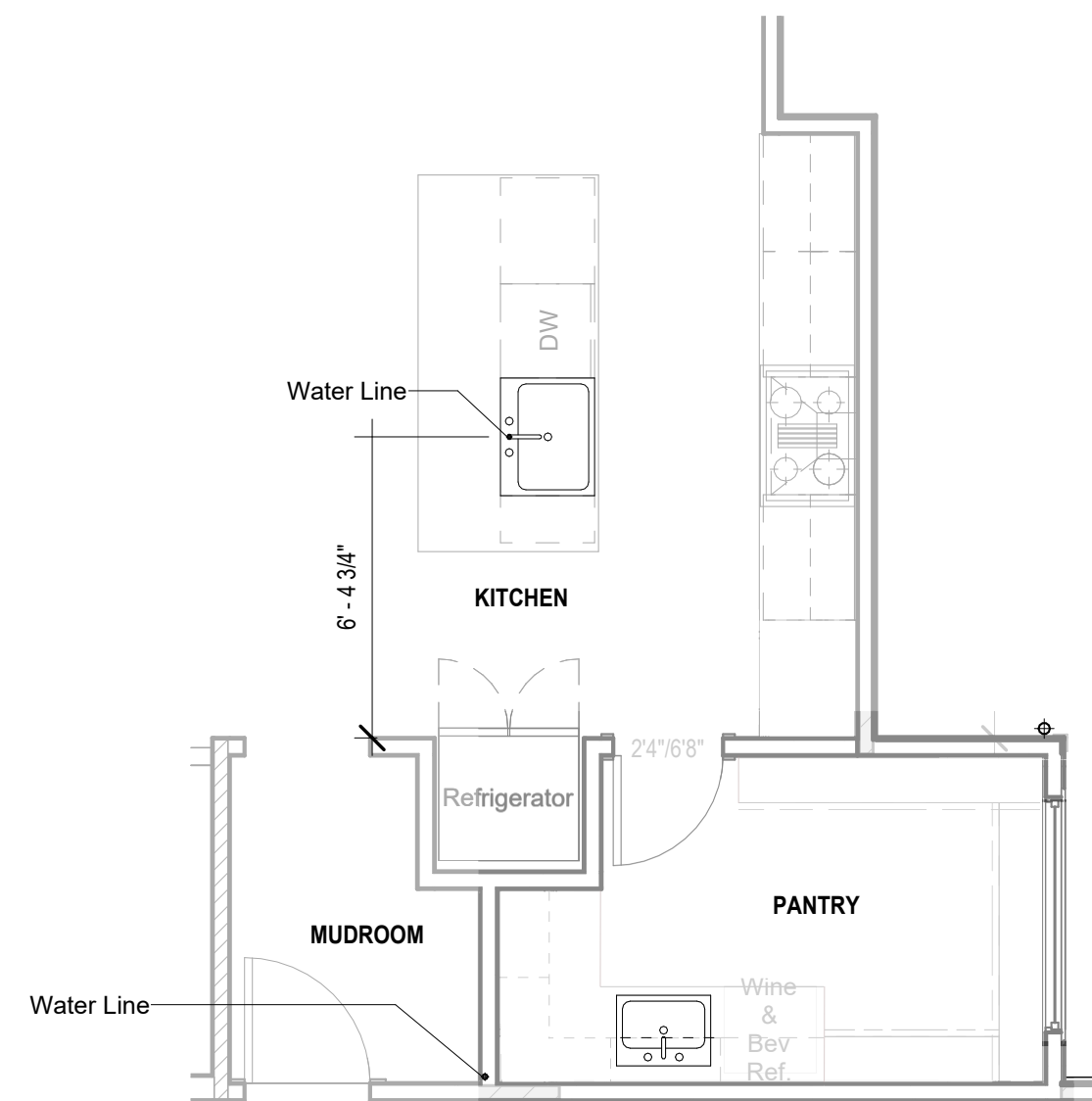


PROJECT
ADDRESS : 2233 SW Heartland Ct.
LOT : Hook Farms 210, Lees Summit, MO

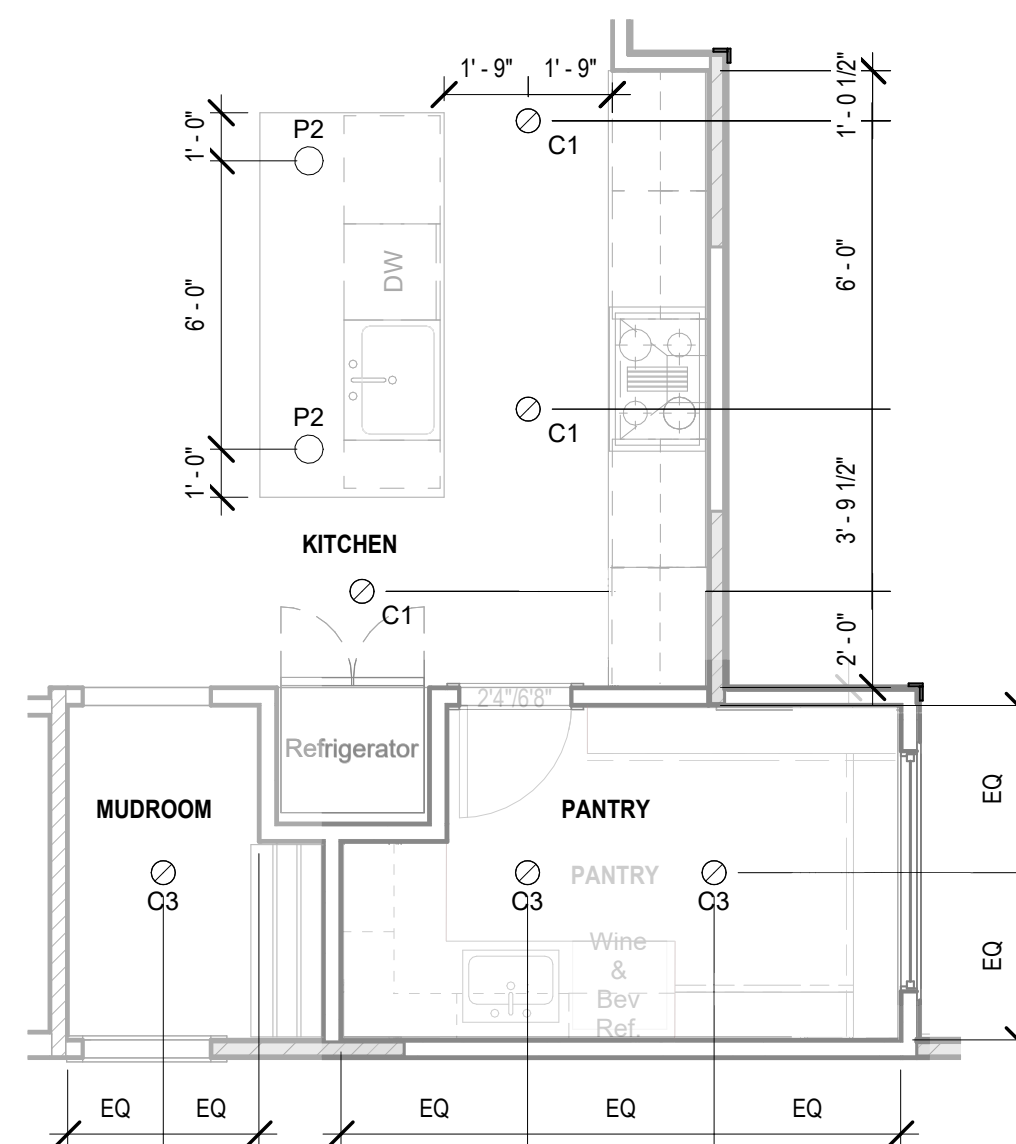
DRAWING NUMBER

NORTH


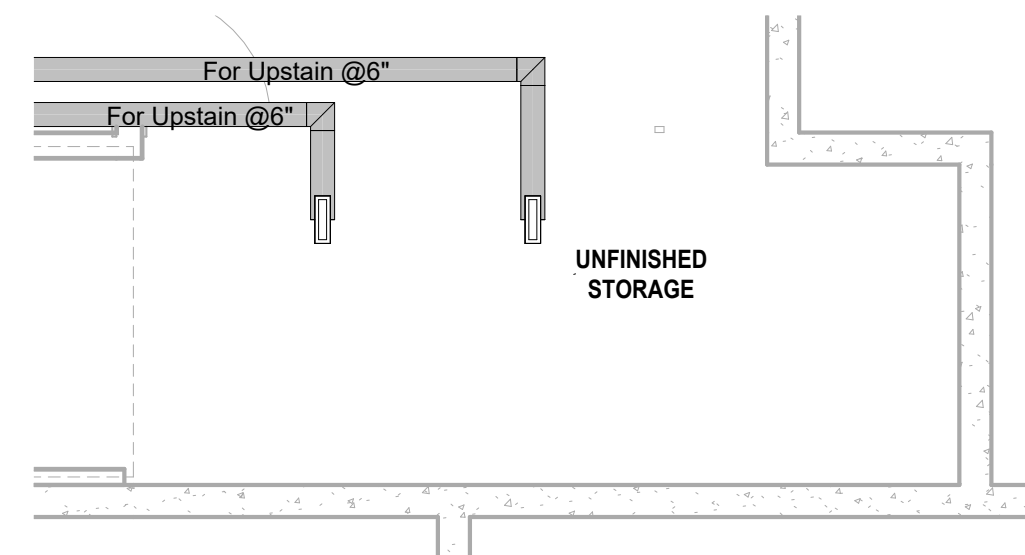
Lighting Fixture Schedule		
Type Mark	Description	Type Comments
B1	Ceiling Mounted Exposed Bulb	
C1	Recessed Can Light - Interior	
C2	Recessed Can Light - Exterior	
C3	LED Disk Light	
CF	Ceiling Fan	
CF1	Ceiling Fan w/ Light - Surface Mounted	
P2	Decorative Pendant Fixture	Mount bottom of fixture 84" AFF
S2	Vanity Wall Mounted	
V2	Vanity Wall Mounted	Mount bottom of fixture 84" AFF



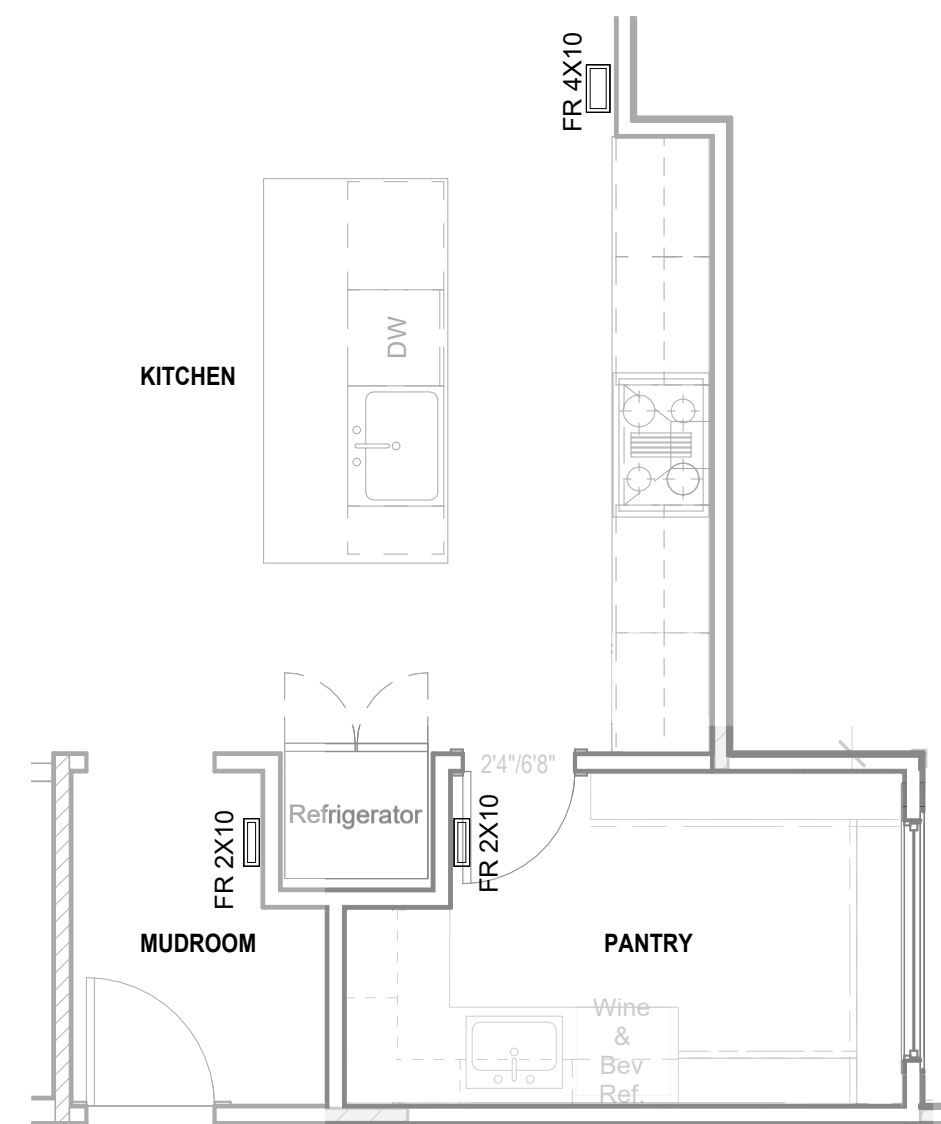
⑥ Kitchen - Design (+) Plumbing
1/4" = 1'-0"



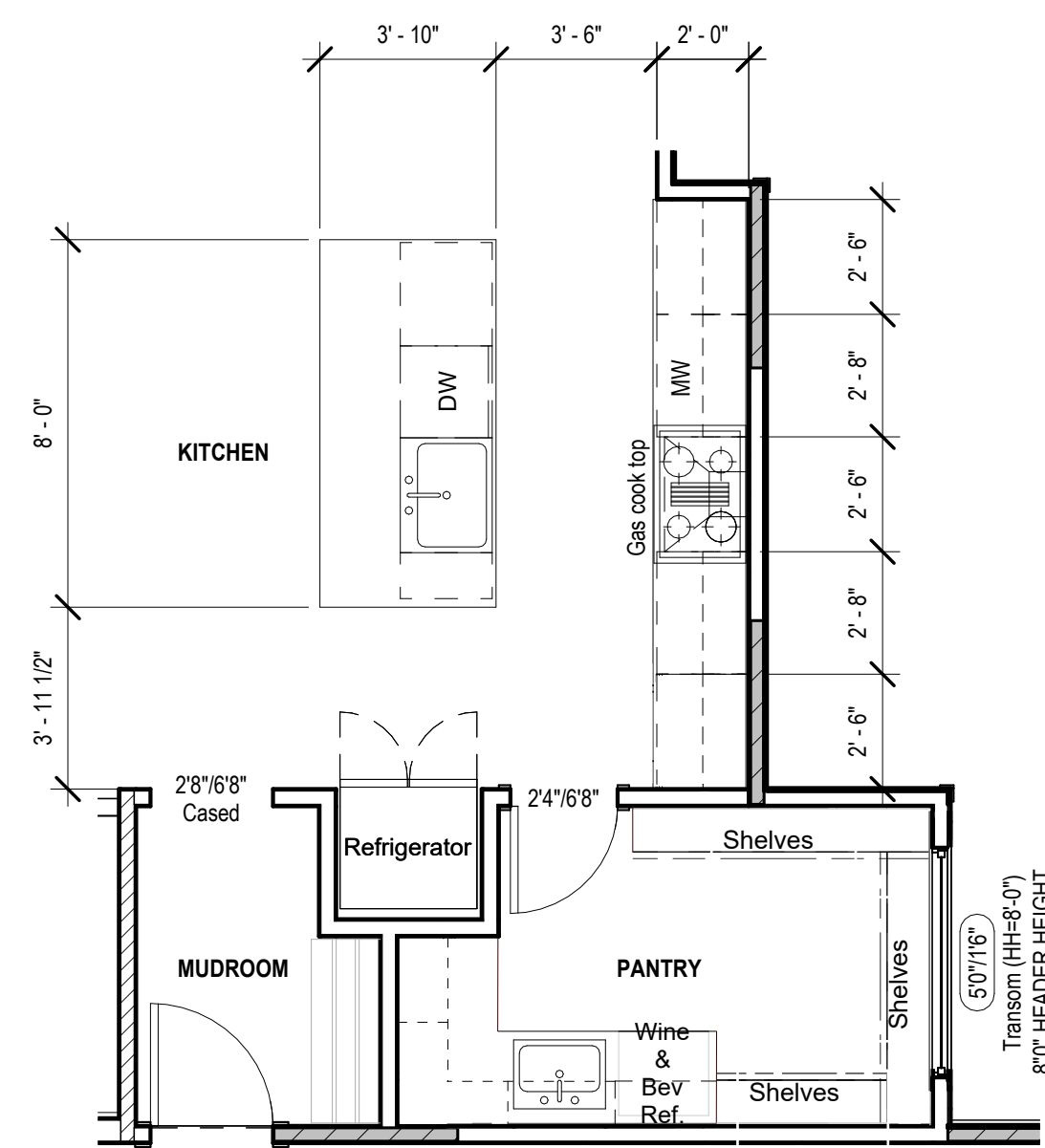
5 Kitchen - Design (+) Lighting
1/4" = 1'-0"



4 Kitchen - Design (+) HVAC Upstain
1/4" = 1'-0"



② Kitchen - Design (+) HVAC
1/4" = 1'-0"



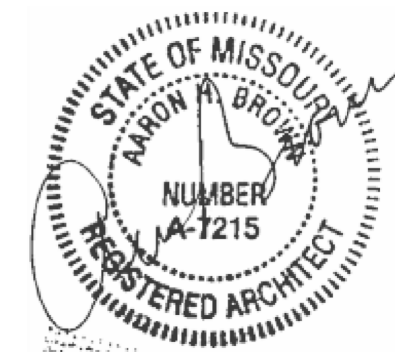
① Kitchen - Design (+)
1/4" = 1'-0"



WOODLAND MASTER PLAN

architect:
Elevate Design + Build
350 SW Longview Blvd
Lee's Summit, MO 64081
816.622.8826 voice
www.elevatedesignbuildkc.com

UNLESS A PROFESSIONAL SEAL WITH SIGNATURE AND DATE IS
AFFIXED, THIS DOCUMENT IS PRELIMINARY AND IS NOT INTENDED FOR
CONSTRUCTION, RECORDING PURPOSES OR IMPLEMENTATION



SEPTEMBER 23, 2025

[illegible]

PROJECT

ADDRESS : 2233 SW Heartland Ct.
LOT : Hook Farms 210, Lees Summit, MO

DRAWING TITLE

POD Options - Kitchen

DATE ISSUED

NORTH



DRAWING NUMBER

A802

09/26/2025



ELEVATE DESIGN + BUILD
Elevating the Homebuilding Experience

architect:
Elevate Design + Build
350 SW Longview Blvd
Lee's Summit, MO 64081
816.622.8826 voice
www.elevatedesignbuildkc.com

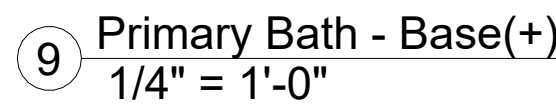
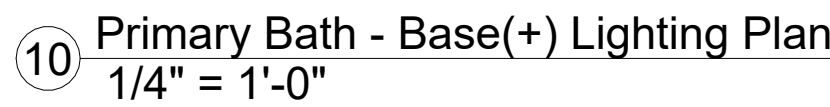
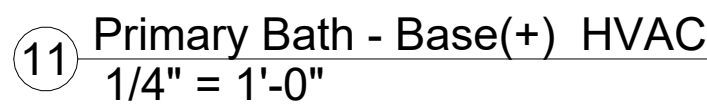
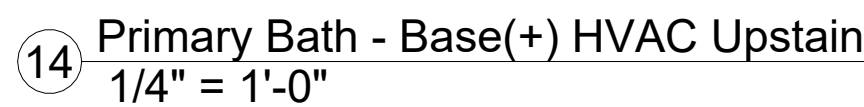
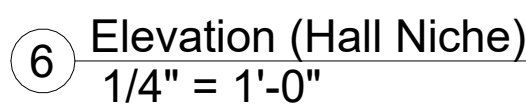
A circular professional seal for Aaron A. Brown, a Registered Architect in the State of Missouri. The seal features the text "STATE OF MISSOURI" at the top, "AARON A. BROWN" in the center, "NUMBER A-7215" below the name, and "REGISTERED ARCHITECT" at the bottom. A stylized signature is written across the seal.

[illegible]

DRAWING NUMBER



RELEASE FOR CONSTRUCTION
AS NOTED FOR PLAN REVIEW
DEVELOPMENT SERVICES
LEE'S SUMMIT, MISSOURI
09/26/2025

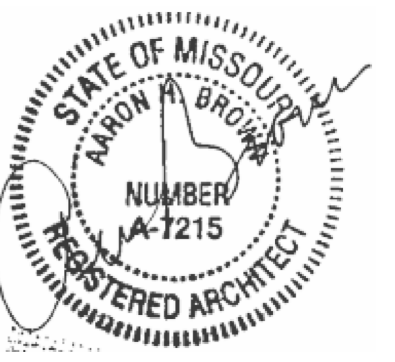




WOODLAND MASTER PLAN

Architect:
Elevate Design + Build
350 SW Longview Blvd
Lee's Summit, MO 64081
316.622.8826 voice
www.elevatedesignbuildkc.com

UNLESS A PROFESSIONAL SEAL WITH SIGNATURE AND DATE IS
AFFIXED, THIS DOCUMENT IS PRELIMINARY AND IS NOT INTENDED FOR
CONSTRUCTION, RECORDING PURPOSES OR IMPLEMENTATION



SEPTEMBER 23, 2025

REVISIONS

[illegible]

PROJECT

ADDRESS : 2233 SW Heartland Ct.
LOT : Hook Farms 210, Lees Summit, MO

DRAWING TITLE

Primery bed and Dinig Bump-out

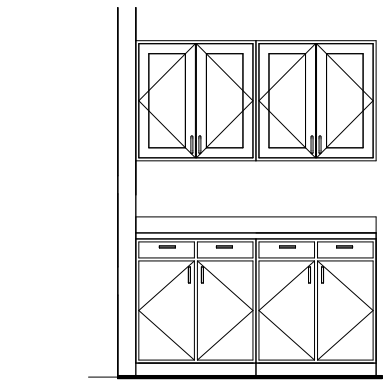
DATE ISSUED	NORTH
-------------	-------

11-03-2025
3:59:25 PM

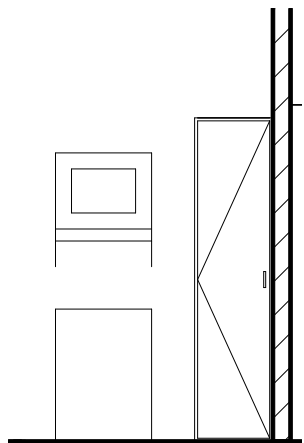
DRAWING NUMBER

A806

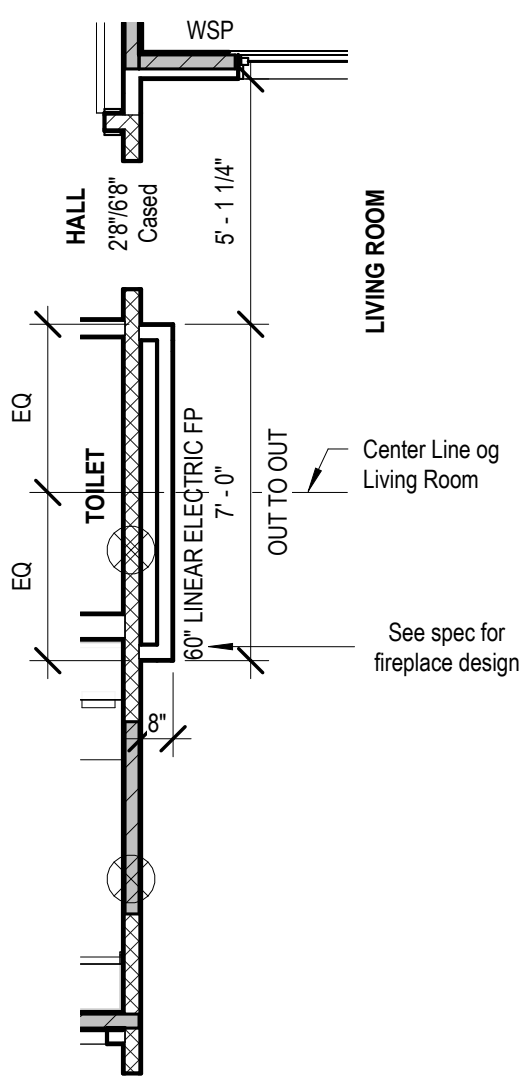
RELEASE FOR CONSTRUCTION
AS NOTED FOR PLAN REVIEW
DEVELOPMENT SERVICES
LEE'S SUMMIT, MISSOURI
09/26/2022



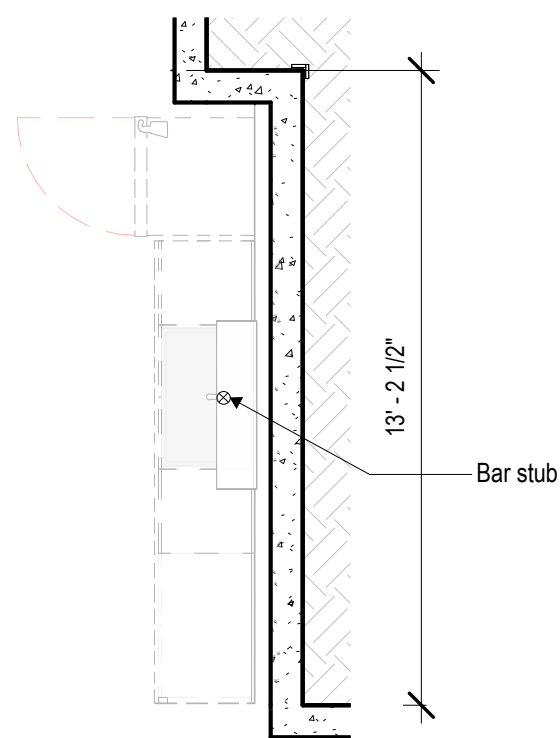
6 Cabinet Door
1/4" = 1'-0"



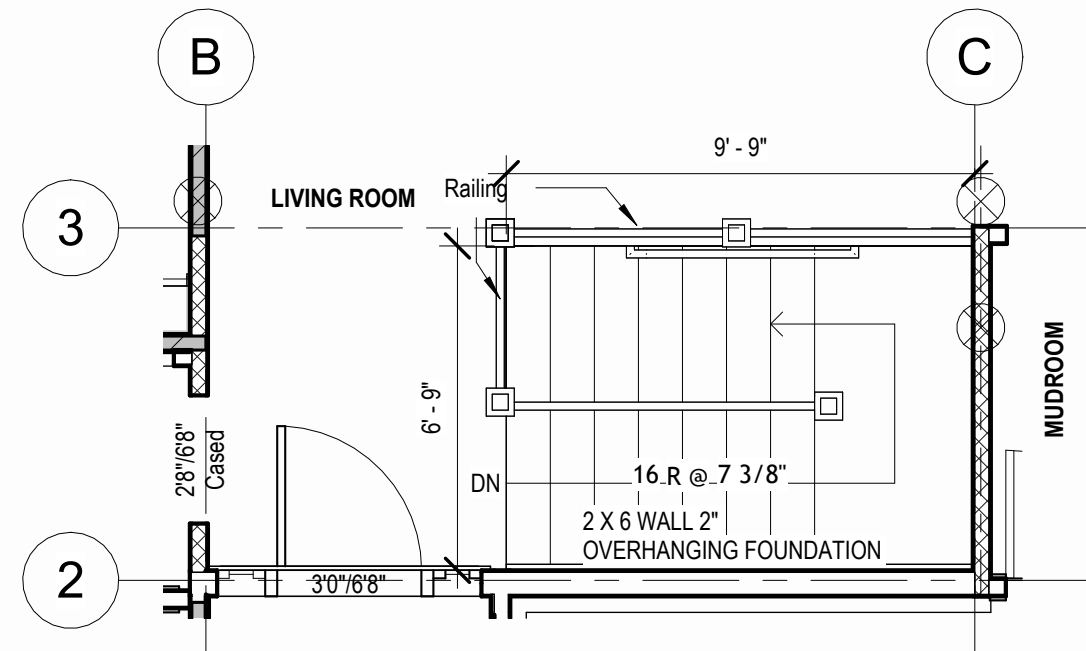
4 Cabinet Door -Wall Framed
1/4" = 1'-0"



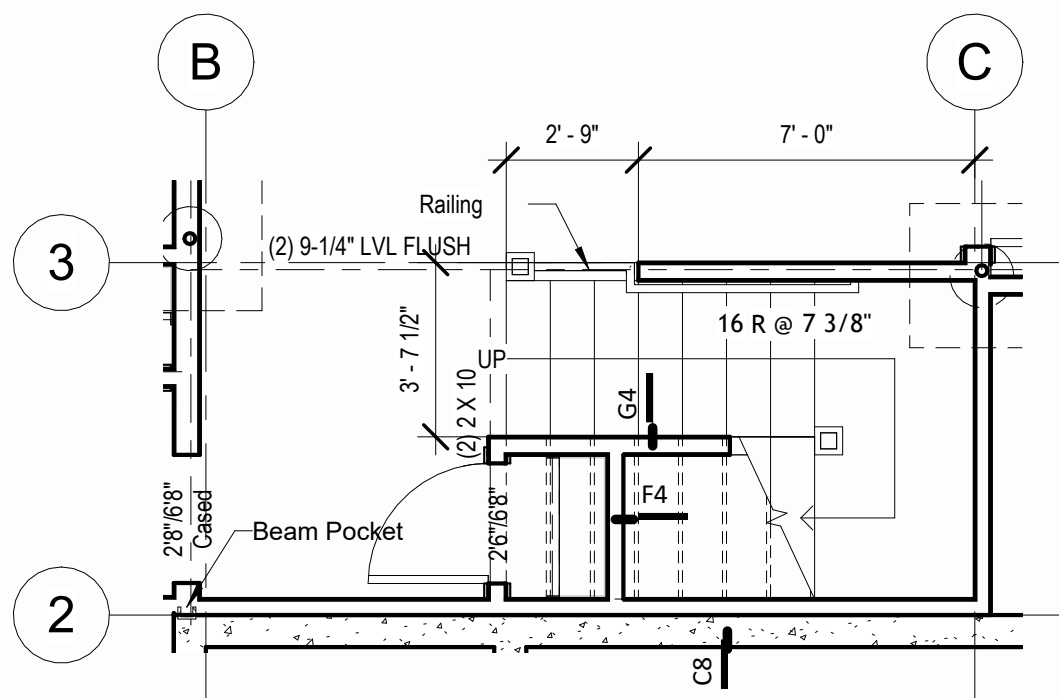
9 Main Level Fire Place - Design
1/4" = 1'-0"



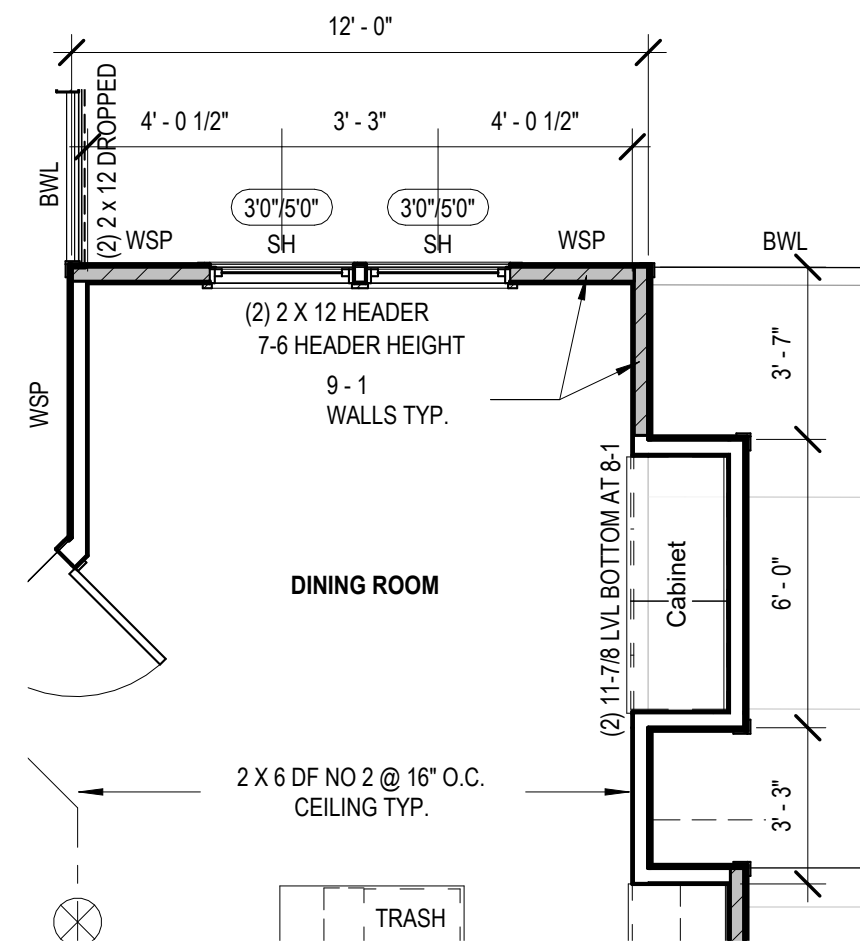
12 Basement Kitchen - Design
1/4" = 1'-0"



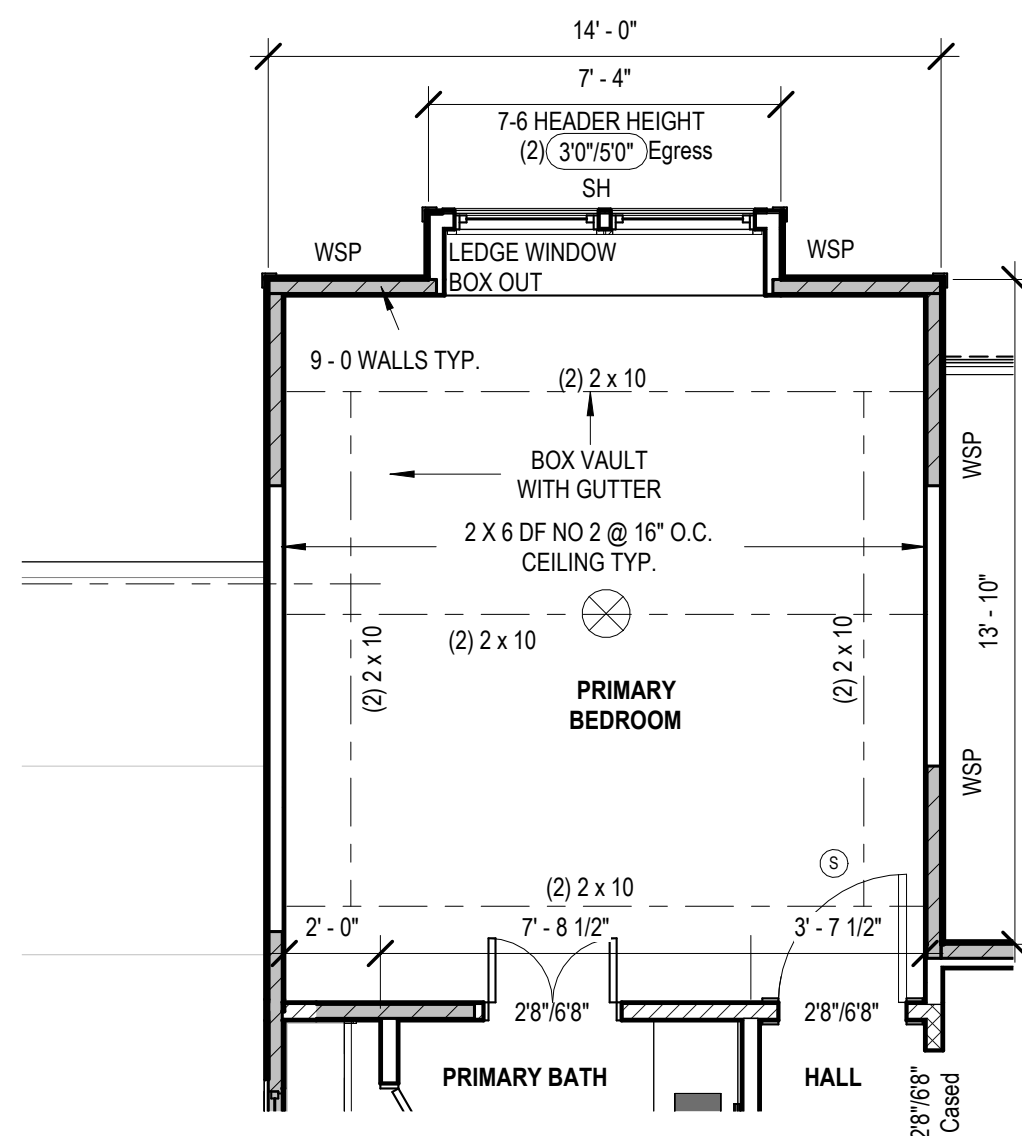
10 Main Level Stair Railing - Design
1/4" = 1'-0"



11 Basement Stair Railing - Design
1/4" = 1'-0"



2 Main Level Dining Bump-Out Plan
1/4" = 1'-0"

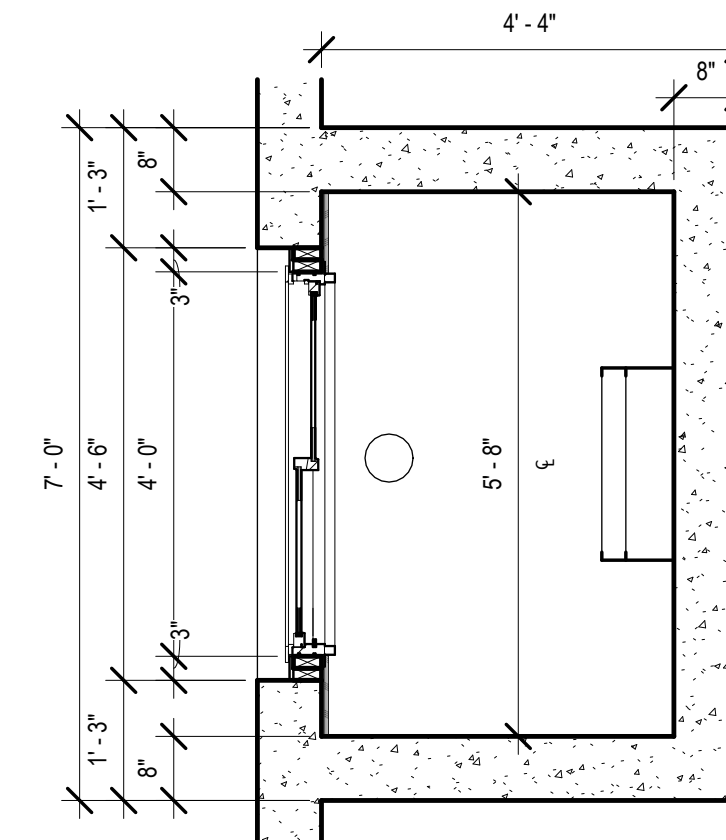
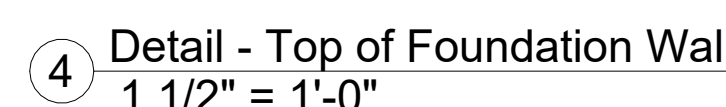
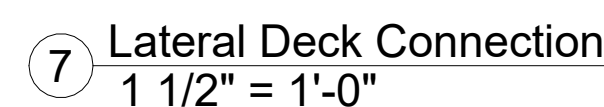


1 Primary Bedroom - BOX Vault option
1/4" = 1'-0"

[illegible]

A901

09/26/202



A circular professional seal for Aaron A. Brown, a Registered Architect in the State of Missouri. The seal features the text "STATE OF MISSOURI" at the top, "AARON A. BROWN" in the center, "NUMBER A-7215" below the name, and "REGISTERED ARCHITECT" at the bottom. A signature is written across the seal.

[illegible]

9:59:40 PM

A903

09/26/20



BEAM POCKET DETAIL

JOISTS PERP. TO RAFTERS

ROOF FRAMING CONNECTION TO BEAMS
WHERE LVL IS BE INSTALLED IN PLANE, PROVIDE SIMPSON STRONG TIE LRU28Z RAFTER HANGERS EA. RAFTER TO LVL. EACH END OF LVL TO BE SECURED TO SUPPORTING CONSTRUCTION WITH SST LSTA15 OR EQUIVALENT STRAP W/ 1100 LBS. CAPACITY. STRAPPING SHALL BE REQUIRED AT ALL NON-CONT. MEMBERS BETWEEN BEAM & TOP OF FLOOR

① TYP. ROOF/RAFTER FRAMING

N.T.S



UNLESS A PROFESSIONAL SEAL WITH SIGNATURE AND DATE IS
AFFIXED, THIS DOCUMENT IS PRELIMINARY AND IS NOT INTENDED
CONSTRUCTION, RECORDING PURPOSES OR IMPLEMENTATION



PROJECT

ADDRESS : 2233 SW Heartland Ct.
LOT : Hook Farms 210, Lees Summit, MO

DATE ISSUED	NORTH
-------------	-------

E101

RELEASE FOR CONSTRUCTION
AS NOTED FOR PLAN REVIEW
DEVELOPMENT SERVICES
LEE'S SUMMIT, MISSOURI
09/26/2025

② RCP/Electrical - Main Leve
1/4" = 1'-0"

Architectural drawing showing a plan view of a basement area, likely a utility room or storage area, with dimensions and notes.

Notes:

- 22 RCP/Electrical -(Full Basement)
1/4" = 1'-0"

Lighting Fixture Schedule:

Type Mark	Description	Type Comments
B1	Ceiling Mounted Exposed Bulb	
C1	Recessed Can Light - Interior	
C2	Recessed Can Light - Exterior	
C3	LED Disk Light	
CF	Ceiling Fan	
CF1	Ceiling Fan w/ Light - Surface Mounted	
P2	Decorative Pendant Fixture	Mount bottom of fixture 84" AFF
S2	Vanity Wall Mounted	
V2	Vanity Wall Mounted	Mount bottom of fixture 84" AFF

The drawing shows a rectangular room with a door on the right wall. A ceiling light fixture, labeled C3, is shown with a 5'-0" dimension. The room is labeled with 'EQ' and 'C3'.

Architectural drawing showing a plan view of a basement area, likely a utility room or storage area, with dimensions and notes.

Dimensions:

- Overall width: 15'-0" (divided into 15 segments of 1'-0" each).
- Overall height: 15'-0" (divided into 15 segments of 1'-0" each).
- Room width: 10'-0" (divided into 10 segments of 1'-0" each).
- Room height: 10'-0" (divided into 10 segments of 1'-0" each).
- Room depth: 5'-0" (divided into 5 segments of 1'-0" each).

Notes:

- 22 RCP/Electrical -(Full Basement)
1/4" = 1'-0"

Lighting Fixture Schedule:

Type Mark	Description	Type Comments
B1	Ceiling Mounted Exposed Bulb	
C1	Recessed Can Light - Interior	
C2	Recessed Can Light - Exterior	
C3	LED Disk Light	
CF	Ceiling Fan	
CF1	Ceiling Fan w/ Light - Surface Mounted	
P2	Decorative Pendant Fixture	Mount bottom of fixture 84" AFF
S2	Vanity Wall Mounted	
V2	Vanity Wall Mounted	Mount bottom of fixture 84" AFF

The drawing shows a basement plan with a large rectangular room and a smaller rectangular area to its right. The room has a door on the right wall. A lighting fixture, labeled C3, is shown hanging from the ceiling in the smaller area. Dimensions are given for the overall area (15'-0" by 15'-0") and the room (10'-0" by 10'-0"). A note indicates the scale is 1/4" = 1'-0". A lighting fixture schedule table is located in the top right corner.

Architectural drawing showing a plan view of a basement area, likely a utility room or storage area, with dimensions and notes.

Notes:

- 22 RCP/Electrical -(Full Basement)
1/4" = 1'-0"

Lighting Fixture Schedule:

Type Mark	Description	Type Comments
B1	Ceiling Mounted Exposed Bulb	
C1	Recessed Can Light - Interior	
C2	Recessed Can Light - Exterior	
C3	LED Disk Light	
CF	Ceiling Fan	
CF1	Ceiling Fan w/ Light - Surface Mounted	
P2	Decorative Pendant Fixture	Mount bottom of fixture 84" AFF
S2	Vanity Wall Mounted	
V2	Vanity Wall Mounted	Mount bottom of fixture 84" AFF

The drawing is a plan view of a basement area. It shows a large rectangular room with a smaller rectangular area attached to the right side. A door is located on the right wall of the smaller area. A lighting fixture, labeled C3, is shown hanging from the ceiling in the smaller area. Dimensions include a 5'-0" measurement for the width of the smaller area and 'EQ' (equal) markings for the depth of the walls. A note indicates 'RCP/Electrical -(Full Basement)' at a scale of '1/4" = 1'-0"'. A lighting fixture schedule table is located in the top right corner, listing various fixtures and their mounting heights.

Architectural drawing showing a plan view of a basement area, likely a utility room or storage area, with dimensions and notes.

Notes:

- 22 RCP/Electrical -(Full Basement)
1/4" = 1'-0"

Lighting Fixture Schedule

Type Mark	Description	Type Comments
B1	Ceiling Mounted Exposed Bulb	
C1	Recessed Can Light - Interior	
C2	Recessed Can Light - Exterior	
C3	LED Disk Light	
CF	Ceiling Fan	
CF1	Ceiling Fan w/ Light - Surface Mounted	
P2	Decorative Pendant Fixture	Mount bottom of fixture 84" AFF
S2	Vanity Wall Mounted	
V2	Vanity Wall Mounted	Mount bottom of fixture 84" AFF

The drawing shows a plan view of a basement area. The room has a large rectangular opening on the left side, possibly a doorway or a large window. A door is shown on the right wall. A lighting fixture, labeled C3, is indicated by a circle with a crosshair. Dimensions of 5'-0" are shown for the width of the room and the distance from the wall to the fixture. A note at the bottom left specifies "22 RCP/Electrical -(Full Basement)" and "1/4" = 1'-0"". A lighting fixture schedule table is located in the top right corner, listing various fixtures and their mounting heights.

Architectural drawing showing a plan view of a basement area, likely a utility room or storage area, with dimensions and notes.

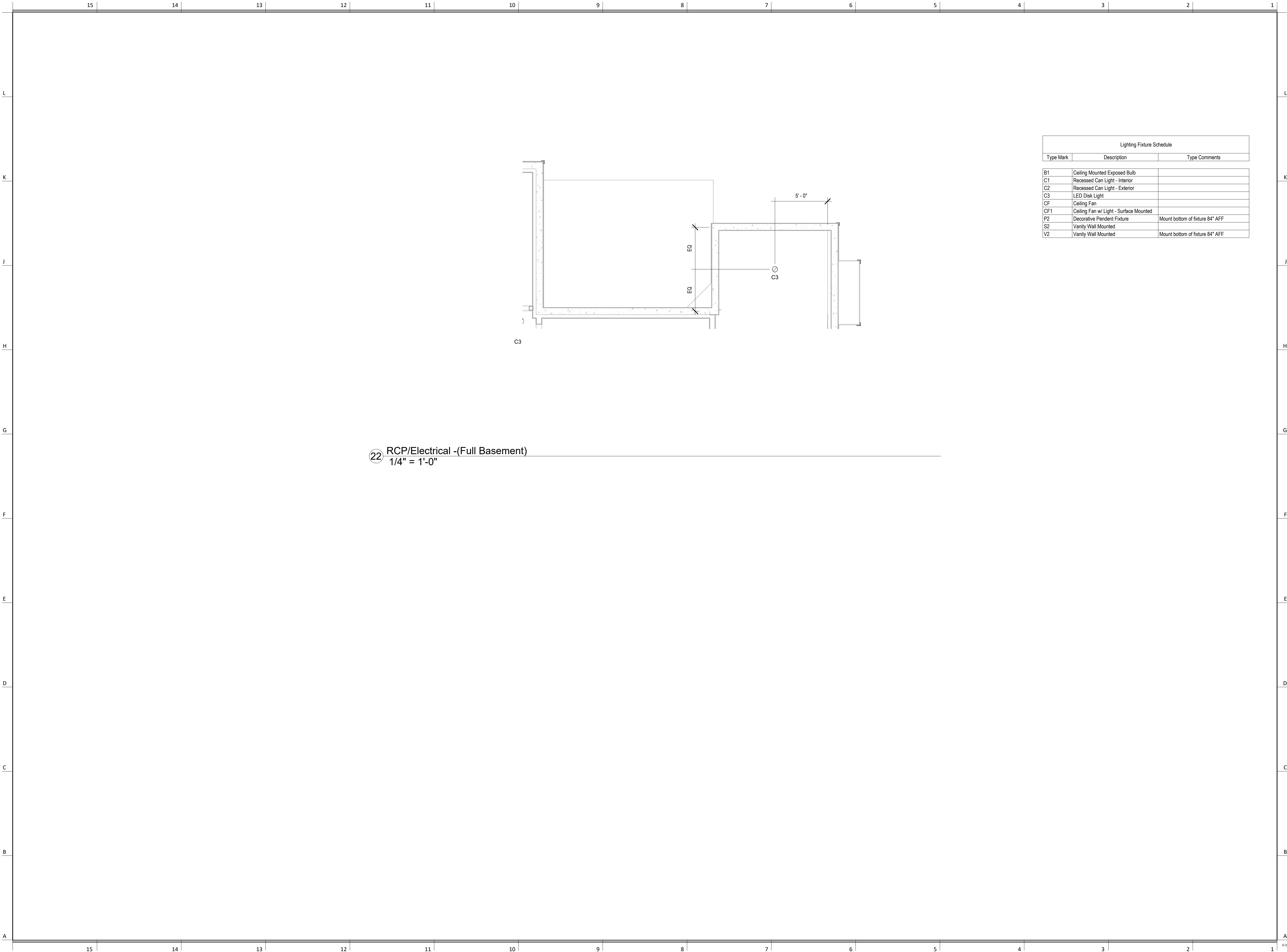
Notes:

- 22 RCP/Electrical -(Full Basement)
- 1/4" = 1'-0"

Lighting Fixture Schedule:

Type Mark	Description	Type Comments
B1	Ceiling Mounted Exposed Bulb	
C1	Recessed Can Light - Interior	
C2	Recessed Can Light - Exterior	
C3	LED Disk Light	
CF	Ceiling Fan	
CF1	Ceiling Fan w/ Light - Surface Mounted	
P2	Decorative Pendant Fixture	Mount bottom of fixture 84" AFF
S2	Vanity Wall Mounted	
V2	Vanity Wall Mounted	Mount bottom of fixture 84" AFF

The drawing is a plan view of a basement area. It shows a large rectangular room with a smaller rectangular area attached to the right side. A door is located on the right wall of the smaller area. A lighting fixture, labeled C3, is shown hanging from the ceiling in the smaller area. Dimensions of 5'-0" are indicated for the width of the smaller area and the distance from the wall to the fixture. Notes specify RCP/Electrical for the full basement and a scale of 1/4" = 1'-0". A lighting fixture schedule table is located in the top right corner.



Architectural drawing showing a plan view of a room layout with electrical and lighting fixtures. The drawing includes a scale bar indicating 1/4" = 1'-0".

Room Layout and Fixtures:

- A large rectangular room with a smaller rectangular area attached to its right side.
- Electrical symbols include a switch (S) and a light fixture (C3).
- Dimensions are provided: 5'-0" for the width of the smaller room and 5'-0" for the length of the larger room.
- Labels include "EQ" (Equipment) and "C3" (Lighting Fixture).

Lighting Fixture Schedule:

Type Mark	Description	Type Comments
B1	Ceiling Mounted Exposed Bulb	
C1	Recessed Can Light - Interior	
C2	Recessed Can Light - Exterior	
C3	LED Disk Light	
CF	Ceiling Fan	
CF1	Ceiling Fan w/ Light - Surface Mounted	
P2	Decorative Pendant Fixture	Mount bottom of fixture 84" AFF
S2	Vanity Wall Mounted	
V2	Vanity Wall Mounted	Mount bottom of fixture 84" AFF

Scale: 1/4" = 1'-0"

Section: 22 RCP/Electrical -(Full Basement)

Architectural drawing showing a plan view of a basement area, likely a utility room or storage area, with dimensions and notes.

The drawing includes a large rectangular area, possibly a room or storage space, with dimensions indicating a width of 5'-0" and a depth of 5'-0". The area is labeled "EQ" (Equipment) and "C3" (Circuit 3).

Notes:

- 22 RCP/Electrical -(Full Basement)
- 1/4" = 1'-0"

Lighting Fixture Schedule:

Type Mark	Description	Type Comments
B1	Ceiling Mounted Exposed Bulb	
C1	Recessed Can Light - Interior	
C2	Recessed Can Light - Exterior	
C3	LED Disk Light	
CF	Ceiling Fan	
CF1	Ceiling Fan w/ Light - Surface Mounted	
P2	Decorative Pendant Fixture	Mount bottom of fixture 84" AFF
S2	Vanity Wall Mounted	
V2	Vanity Wall Mounted	Mount bottom of fixture 84" AFF

Architectural drawing showing a plan view of a basement area, likely a utility room or storage area, with dimensions and notes.

The drawing includes a large rectangular area, possibly a room or storage space, with dimensions indicating a width of 5'-0" and a height of 5'-0". The area is labeled "EQ" (Equipment) and "C3" (Circuit 3).

Notes:

- 22 RCP/Electrical -(Full Basement)
- 1/4" = 1'-0"

Lighting Fixture Schedule:

Type Mark	Description	Type Comments
B1	Ceiling Mounted Exposed Bulb	
C1	Recessed Can Light - Interior	
C2	Recessed Can Light - Exterior	
C3	LED Disk Light	
CF	Ceiling Fan	
CF1	Ceiling Fan w/ Light - Surface Mounted	
P2	Decorative Pendant Fixture	Mount bottom of fixture 84" AFF
S2	Vanity Wall Mounted	
V2	Vanity Wall Mounted	Mount bottom of fixture 84" AFF

Architectural drawing showing a plan view of a room layout with electrical and lighting fixtures. The drawing includes a scale bar indicating 1/4" = 1'-0".

Room Layout and Fixtures:

- Room dimensions: 15'0" x 14'0" (approximate).
- Room features: A large rectangular room with a smaller rectangular area (possibly a closet or entry) on the right side.
- Lighting fixtures: C1 (Recessed Can Light - Interior), C2 (Recessed Can Light - Exterior), C3 (LED Disk Light), CF (Ceiling Fan), CF1 (Ceiling Fan w/ Light - Surface Mounted), P2 (Decorative Pendant Fixture), S2 (Vanity Wall Mounted), V2 (Vanity Wall Mounted).
- Electrical fixtures: EQ (Electrical Outlet).
- Scale: 1/4" = 1'-0".

Lighting Fixture Schedule:

Type Mark	Description	Type Comments
B1	Ceiling Mounted Exposed Bulb	
C1	Recessed Can Light - Interior	
C2	Recessed Can Light - Exterior	
C3	LED Disk Light	
CF	Ceiling Fan	
CF1	Ceiling Fan w/ Light - Surface Mounted	
P2	Decorative Pendant Fixture	Mount bottom of fixture 84" AFF
S2	Vanity Wall Mounted	
V2	Vanity Wall Mounted	Mount bottom of fixture 84" AFF

Architectural drawing showing a plan view of a basement area, likely a utility room or storage area, with dimensions and notes.

Notes:

- 22 RCP/Electrical -(Full Basement)
1/4" = 1'-0"

Lighting Fixture Schedule:

Type Mark	Description	Type Comments
B1	Ceiling Mounted Exposed Bulb	
C1	Recessed Can Light - Interior	
C2	Recessed Can Light - Exterior	
C3	LED Disk Light	
CF	Ceiling Fan	
CF1	Ceiling Fan w/ Light - Surface Mounted	
P2	Decorative Pendant Fixture	Mount bottom of fixture 84" AFF
S2	Vanity Wall Mounted	
V2	Vanity Wall Mounted	Mount bottom of fixture 84" AFF

Dimensions:

- 5'-0"
- EQ

Architectural drawing showing a plan view of a basement layout with electrical and lighting fixtures.

The drawing includes a scale bar indicating 1/4" = 1'-0".

The drawing shows a rectangular room with a door on the right wall. A light fixture (C3) is indicated by a circle with a crosshair, located near the door. A dimension line indicates a distance of 5'-0" from the door to the light fixture.

The drawing also shows a section of the wall with a door and a window. The door is labeled "EQ" and the window is labeled "EQ".

The drawing includes a table titled "Lighting Fixture Schedule" in the upper right corner.

Type Mark	Description	Type Comments
B1	Ceiling Mounted Exposed Bulb	
C1	Recessed Can Light - Interior	
C2	Recessed Can Light - Exterior	
C3	LED Disk Light	
CF	Ceiling Fan	
CF1	Ceiling Fan w/ Light - Surface Mounted	
P2	Decorative Pendant Fixture	Mount bottom of fixture 84" AFF
S2	Vanity Wall Mounted	
V2	Vanity Wall Mounted	Mount bottom of fixture 84" AFF

22 RCP/Electrical -(Full Basement)
1/4" = 1'-0"

Architectural drawing showing a plan view of a basement area, likely a utility room or storage area, with dimensions and notes.

Notes:

- 22 RCP/Electrical -(Full Basement)
1/4" = 1'-0"

Lighting Fixture Schedule:

Type Mark	Description	Type Comments
B1	Ceiling Mounted Exposed Bulb	
C1	Recessed Can Light - Interior	
C2	Recessed Can Light - Exterior	
C3	LED Disk Light	
CF	Ceiling Fan	
CF1	Ceiling Fan w/ Light - Surface Mounted	
P2	Decorative Pendant Fixture	Mount bottom of fixture 84" AFF
S2	Vanity Wall Mounted	
V2	Vanity Wall Mounted	Mount bottom of fixture 84" AFF

The drawing shows a plan view of a basement area. The walls are represented by thick lines. There are two doors shown: one on the left wall and one on the right wall. A lighting fixture, labeled C3, is shown hanging from the ceiling. The fixture is a circular disk light. Dimensions are provided: a horizontal dimension of 5'-0" and a vertical dimension of 5'-0". A note indicates that the drawing is for RCP/Electrical for the full basement, with a scale of 1/4" = 1'-0". A lighting fixture schedule table is located in the upper right corner of the drawing.

Architectural drawing showing a plan view of a basement area, likely a utility room or storage area, with dimensions and notes.

Notes:

- 22 RCP/Electrical -(Full Basement)
1/4" = 1'-0"

Lighting Fixture Schedule:

Type Mark	Description	Type Comments
B1	Ceiling Mounted Exposed Bulb	
C1	Recessed Can Light - Interior	
C2	Recessed Can Light - Exterior	
C3	LED Disk Light	
CF	Ceiling Fan	
CF1	Ceiling Fan w/ Light - Surface Mounted	
P2	Decorative Pendant Fixture	Mount bottom of fixture 84" AFF
S2	Vanity Wall Mounted	
V2	Vanity Wall Mounted	Mount bottom of fixture 84" AFF

The drawing shows a plan view of a basement area. The walls are represented by thick lines. There are two doors shown: one on the left wall and one on the right wall. A lighting fixture, labeled C3, is shown hanging from the ceiling. The fixture is a circular disk light. Dimensions are provided: a horizontal dimension of 5'-0" and a vertical dimension of 5'-0". A note indicates that the drawing is for RCP/Electrical for the full basement, with a scale of 1/4" = 1'-0". A lighting fixture schedule table is located in the upper right corner of the drawing.

UNLESS A PROFESSIONAL SEAL WITH SIGNATURE AND DATE IS
AFFIXED, THIS DOCUMENT IS PRELIMINARY AND IS NOT INTENDED
CONSTRUCTION, RECORDING PURPOSES OR IMPLEMENTATION



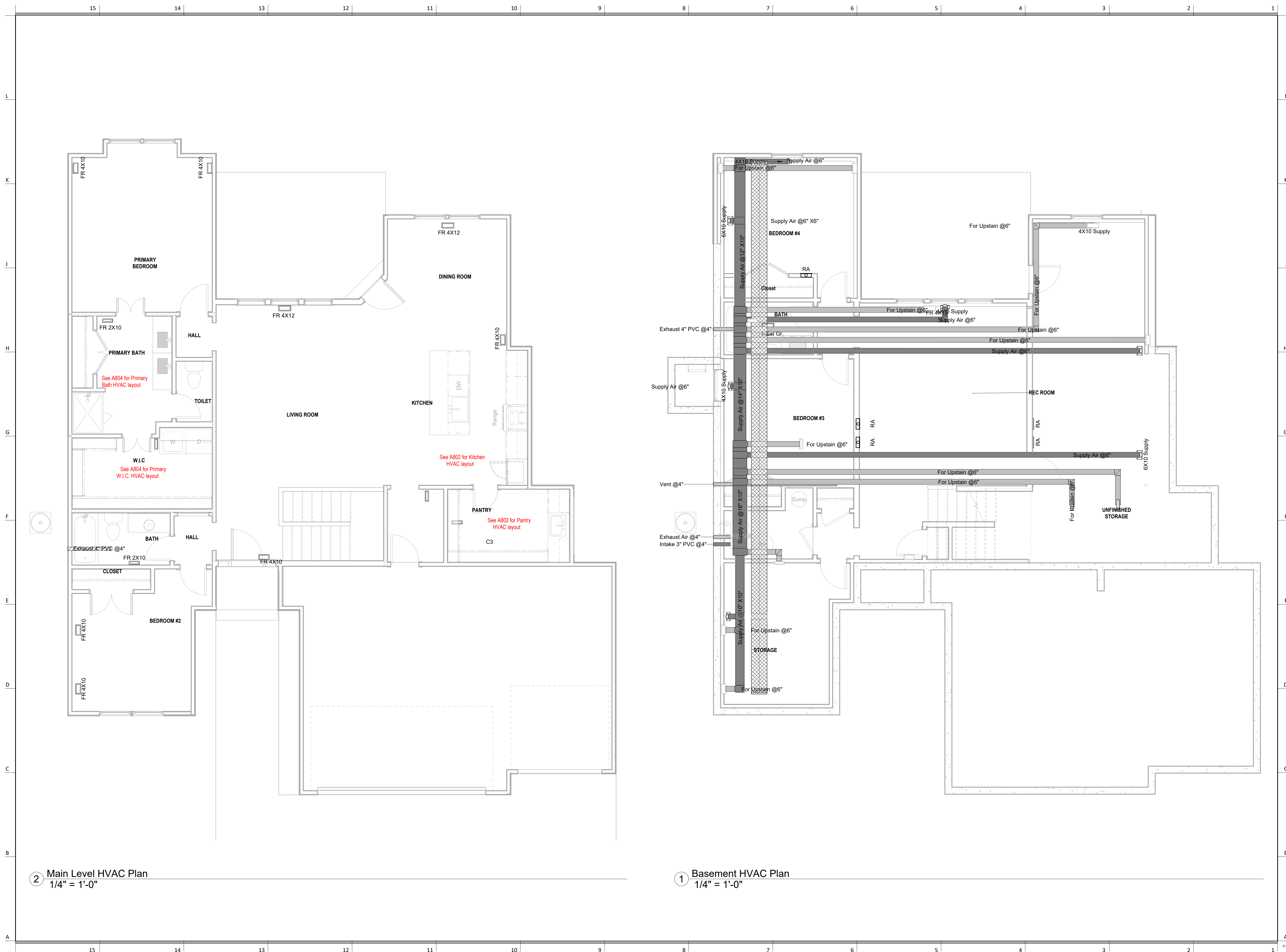
PROJECT
ADDRESS : 2233 SW Heartland Ct.
LOT : Hook Farms 210, Lees Summit, MO

DATE ISSUED	NORTH
-------------	-------

DRAWING NUMBER

M101

RELEASE FOR CONSTRUCTION
AS NOTED FOR PLAN REVIEW
DEVELOPMENT SERVICES
LEE'S SUMMIT, MISSOURI
09/26/2025



UNLESS A PROFESSIONAL SEAL WITH SIGNATURE AND DATE IS
AFFIXED, THIS DOCUMENT IS PRELIMINARY AND IS NOT INTENDED
CONSTRUCTION, RECORDING PURPOSES OR IMPLEMENTATION



PROJECT
ADDRESS : 2233 SW Heartland Ct.
LOT : Hook Farms 210, Lees Summit, MO

DATE ISSUED	NORTH
-------------	-------

DRAWING NUMBER

P101

09/26/20

