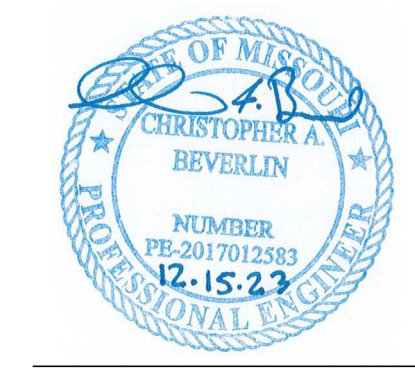


1 CLUBHOUSE FOUNDATION PLAN

- 3/16" = 1'-0"
- FOUNDATION NOTES:**
- 1) REFER TO GENERAL NOTES ON SHEET S0.01.
 - 2) REFER TO CIVIL AND ARCH DRAWING FOR SLAB ELEVATIONS.
 - 3) ELEVATION 100'-0" VARIES PER BUILDING - RE: CIVIL.
 - 4) TOP OF FOOTING ELEVATIONS PER PLAN.
 - 5) REFER TO FOOTING SCHEDULE ON S0.10.
 - 6) REFER TO ARCH AND MECH DRAWINGS FOR LOCATIONS OF SPOT AND TRENCH DRAINS.
 - 7) REFER TO CONCRETE COLUMN SCHEDULE ON S0.10.
 - 8) REFER TO S3.00 SERIES DRAWINGS FOR TYPICAL FOUNDATION DETAILS.
 - 9) PROVIDE POCKET AT TOP OF FOUNDATION WALL TO RECEIVE GRADE BEAM ABOVE PER 15/S3.00



A NEW DEVELOPMENT:
RESIDENCES AT BLACKWELL
50 Highway & Blackwell, Lee's Summit, MO

DRAWING RELEASE LOG

REVISIONS:

1	4/25/2023	Addendum 1
5	12/15/2023	Addendum #7

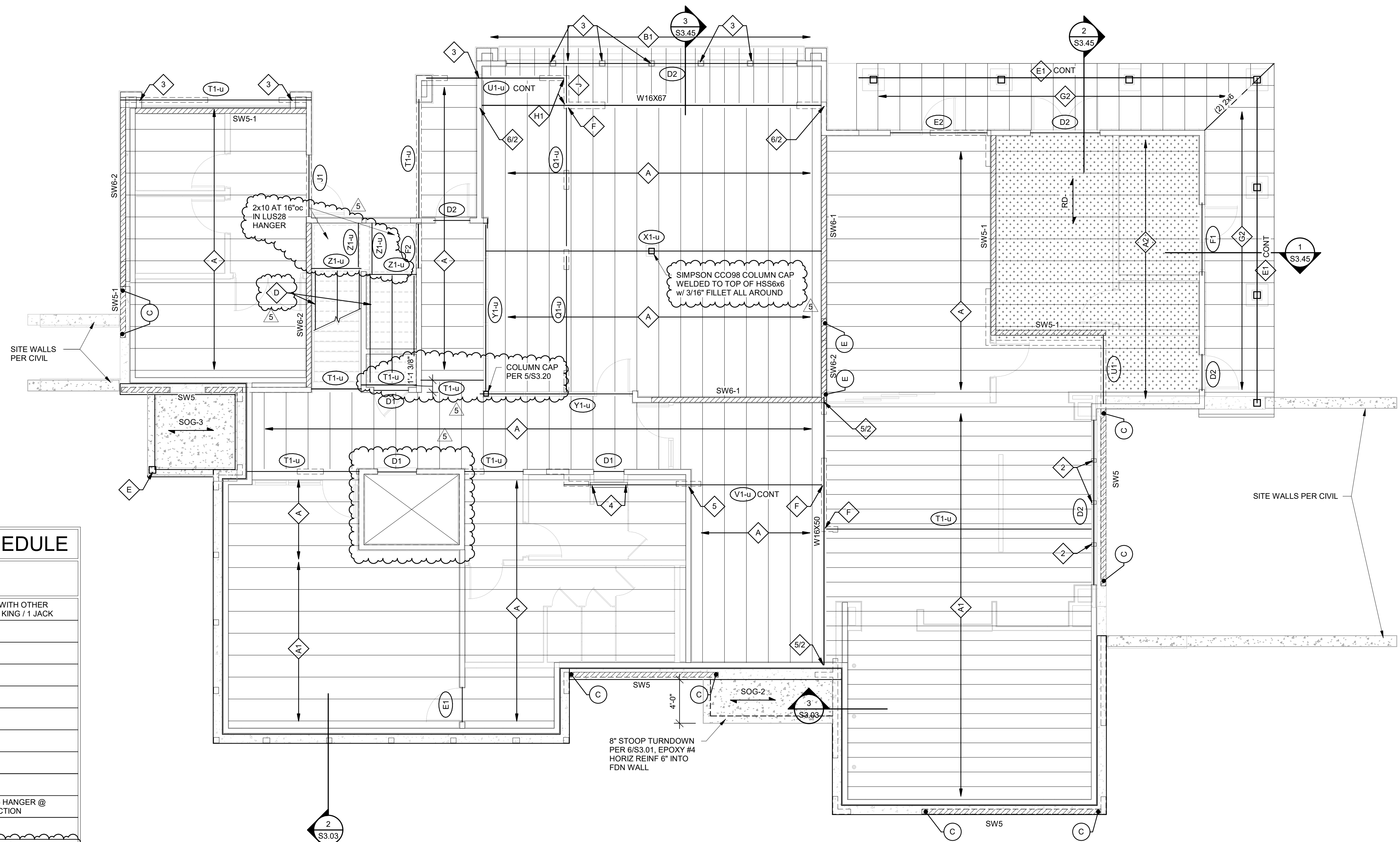
DATE:
3/24/2023
JOB NO.
696521
DRAWN BY:
CAB/JLF
SHEET NO.

PERMIT SET
S2.10

CLUBHOUSE PLAN NOTES	
A	18" DEEP PRE-ENGINEERED FLOOR TRUSSES @ 24"oc MAX
A1	18" DEEP PRE-ENGINEERED FLOOR TRUSSES @ 16"oc MAX
A2	24" DEEP PRE-ENGINEERED ROOF TRUSSES @ 24"oc MAX (SLOPE TOP CHORD PER ARCH)
B1	2x12 @ 16"oc JOISTS
B2	(2) 2x12 @ 12"oc JOISTS
C1	2x10 @ 24"oc JOISTS
C2	(2) 2x10 @ 16"oc JOISTS
C3	(2) 2x10 @ 12"oc JOISTS
C4	2x10 @ 24"oc JOISTS OVERBUILD ABOVE
D	STAIR STRINGERS PER 1/S1.10
E	8x8 WOOD COLUMN ATOP SIMPSON ABU88Z W/ (2) 5/8"Øx6"lg SIMPSON TITEN HD SCREW ANCHORS
E1	(3) 2x10 CONT W/ PC6Z POST CAP @ EA COLUMN WITH (2) 2x10, 8"lg SHIMS
E2	(3) 2x8 CONT W/ EPC8Z POST CAP WITH (2)2x8, 8"lg SHIMS @ COLUMN & HUC26-3 HANGER FACEMOUNTED TO SHEATHING W/ (3) 2x6 KING STUDS ALIGNED W/ BEAM
F	STEEL BUCKET PER 4/S3.20
G1	2x8 JOISTS @ 16"oc. TAPER JOIST PER 4/S3.42 W/ SLOPE PER ARCH
G2	2x6 JOISTS @ 16"oc. TAPER JOIST PER 1/S3.44
H1	HUCQ612-SDS HANGER
J	UPSET (3) 1 3/4"x11 1/4" BEAM. PROVIDE CONTINUOUS BLOCKING FOR EXTENTS OF EXTERIOR WALL ABOVE BTWN T/BEAM AND B/DECK.
K	(4) 2x8 HIGH & LOW w/ (2) TOP PL & 2x8 BOTTL PL w/ 1 JACK / 3 KING EA END W/ (4) 2x8 JACKS AT INTERIOR JAMBS. AT LOW HEADER INTERIOR JAMBS TO HAVE OUTER PLIES INTERRUPTED.

CLUBHOUSE HEADERS/BEAMS SCHEDULE			
MARK	HEADER	JAMB TYPE #	NOTES
C1	(3) 2x6	1 JACK / 1 KING	AT SHARED JAMBED WITH OTHER C1 PROVIDE 1 JACK / 1 KING / 1 JACK
D1	(3) 2x8	1 JACK / 1 KING	
D2	(3) 2x8	1 JACK / 2 KING	
E1	(3) 2x10	1 JACK / 1 KING	
E2	(3) 2x10	1 JACK / 2 KING	
F1	(3) 2x12	1 JACK / 2 KING	
F2	(3) 2x12	2 JACK / 2 KING	
J1	(3) 1 3/4"x7 1/8" LVL	2 JACK / 2 KING	
N1	(3) 1 3/4"x11 1/4" LVL		
Q1	(3) 1 3/4"x14" LVL		HGU.50-SDS (H=14") HANGER @ BEAM CONNECTION
S1	(3) 1 3/4"x16" LVL	3 KING	
T1	(2) 1 3/4"x18" LVL	3 KING	SIMPSON HU416 TO Y1 BEAM
U1	(3) 1 3/4"x18" LVL	3 KING	
V1	(4) 1 3/4"x18" LVL	3 KING	
X1	(5) 1 3/4"x18" LVL	4 KING @ WALL / SIMPSON EG9 HANGER TO Y1 BEAM	ATTACH PLIES TOGETHER W/ 3 ROWS OF 1/4"x8" SDS SCREWS @ 12"oc FROM EA SIDE - MATCH EDGE DISTANCE PER 5A/S0.02
Y1	(4) 1 3/4"x18" LVL	4 KING	
Z1	(2) 1 3/4"x14" LVL	2 JACK / 2 KING	SIMPSON HUC416 TO BEAM

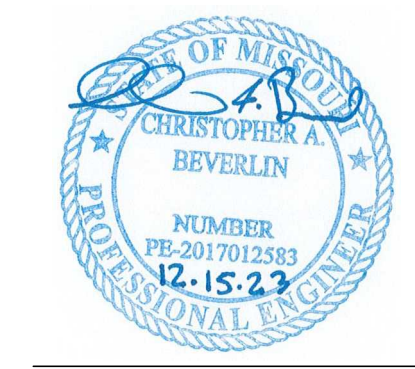
- NOTES:
- JAMB STUDS SHALL MATCH SIZE & GRADE OF WALL STUDS U.N.O.
 - WHERE BEAM IS NOTED "u", ALL JAMB STUDS NOTED WILL EXTEND TO DOUBLE TOP PLATE.
 - ALL EXTERIOR LUMBER TO BE TREATED AGAINST MOISTURE. REFER TO NOTE 12.T ON SHEET S0.01 FOR FIRE RETARDANT TREATED HEADER AND STUD REQUIREMENTS.
 - PROVIDE SQUASH BLOCKS AT TRUSSES & BLOCKING FRAMING WHERE JAMBS OR STUD PACKS ARE DISCONT AND IN TRUSS CAVITY. QUANTITY TO MATCH JAMB OR STUD PACK ABOVE.
 - PROVIDE 1/2" PLYWOOD SPACER PLATES AT INTERIOR HEADERS CONSTRUCTED WITH 2x LUMBER.
 - AT CONTRACTOR'S OPTION, PROVIDE GLULAM IN LIEU OF PSL OF EQUAL OR GREATER STRENGTH.
 - REFER TO DETAIL 4/S0.02 FOR MULTIPLY MEMBER CONNECTION REQUIREMENTS.
 - ATTACH JAMB & KING STUDS TOGETHER PER CONNECTION TYPE 24 ON NAILING SCHEDULE ON S0.01.



1 CLUBHOUSE 1ST FLOOR FRAMING PLAN

3/16" = 1'-0"

- WOOD FLOOR FRAMING NOTES:
- REFER TO GENERAL NOTES ON SHEET S0.01
 - REFER TO STUD BEARING WALL SCHEDULE TO SHEET S0.02
 - REFER TO HEADER/BEAM SCHEDULE ON SHEET S0.02
 - REFER TO SHEARWALL SCHEDULE ON SHEET S0.03
 - REFER TO STAIR FRAMING PLANS ON SHEET S2.00
 - REFER TO BALCONY FRAMING PLANS ON SHEET S1.20
 - REFER TO S3.30-SERIES DRAWINGS FOR ADDITIONAL FLOOR FRAMING DETAILS NOT INDICATED HERE
 - PROVIDE TRUSS SPACE DIRECTLY ABOVE AND CENTERED OVER HVAC CLOSETS; REFER TO ARCH & MEP DRAWINGS FOR EXACT LOCATIONS
 - STORAGE AREA: DESIGN FOR LL PER GENERAL NOTE 2.B ON S0.01
 - TOP OF STEEL ELEVATION FOR STEEL BEARING ON WOOD MEMBERS SHALL BE FIELD COORDINATED BY THE CONTRACTOR & ARCHITECTURAL ROUGH OPENING SCHEDULE.



A NEW DEVELOPMENT:
RESIDENCES AT BLACKWELL
50 Highway & Blackwell, Lee's Summit, MO

DRAWING RELEASE LOG

REVISIONS:
1 4/25/2023 Addendum 1
5 12/15/2023 Addendum #7

DATE:
3/24/2023
JOB NO.
696521
DRAWN BY:
CAB/JLF
SHEET NO.

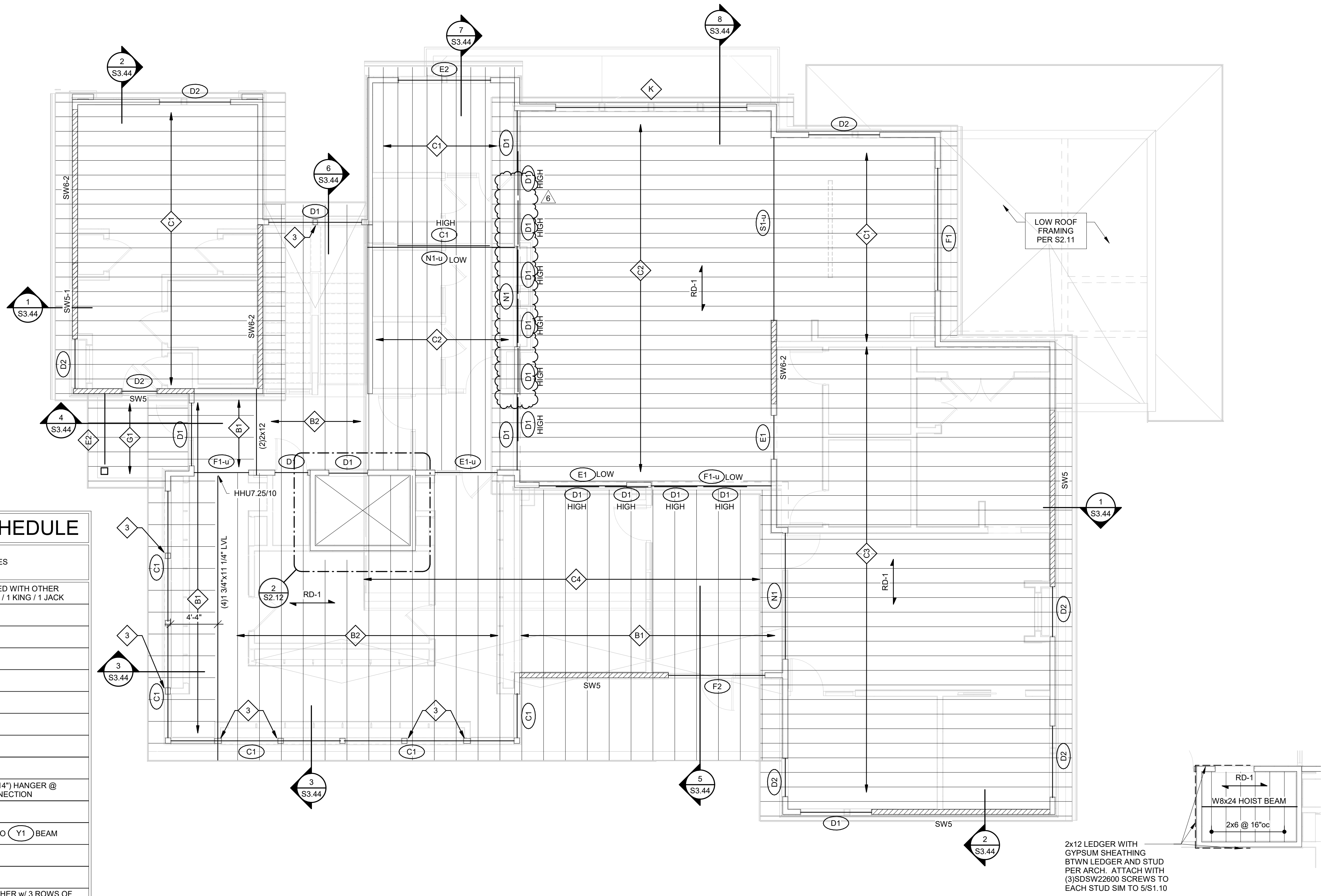
PERMIT SET

S2.11

CLUBHOUSE PLAN NOTES	
A	18" DEEP PRE-ENGINEERED FLOOR TRUSSES @ 24"oc MAX
A1	18" DEEP PRE-ENGINEERED FLOOR TRUSSES @ 16"oc MAX
A2	24" DEEP PRE-ENGINEERED ROOF TRUSSES @ 24"oc MAX (SLOPE TOP CHORD PER ARCH)
B1	2x12 @ 16"oc JOISTS
B2	(2) 2x12 @ 12"oc JOISTS
C1	2x10 @ 24"oc JOISTS
C2	(2) 2x10 @ 16"oc JOISTS
C3	(2) 2x10 @ 12"oc JOISTS
C4	2x10 @ 24"oc JOISTS OVERBUILD ABOVE
D	STAIR STRINGERS PER 1/S1.10
E	8x8 WOOD COLUMN ATOP SIMPSON ABU88Z W/ (2) 5/8"x2x6" LG SIMPSON TITEN HD SCREW ANCHORS
E1	(3) 2x10 CONT W/ PC8Z POST CAP @ EA COLUMN WITH (2) 2x10, 8" LG SHIMS
E2	(3) 2x8 CONT W/ EPC8Z POST CAP WITH (2) 2x8, 8" LG SHIMS @ COLUMN & HUC26-3 HANGER FACEMOUNTED TO SHEATHING W/ (3) 2x6 KING STUDS ALIGNED W/ BEAM
F	STEEL BUCKET PER 4/S3.20
G1	2x8 JOISTS @ 16"oc. TAPER JOIST PER 4/S3.42 W/ SLOPE PER ARCH
G2	2x6 JOISTS @ 16"oc. TAPER JOIST PER 1/S3.44
H1	HUCQ612-SDS HANGER
J	UPSET (3) 1 3/4"x11 1/4" BEAM. PROVIDE CONTINUOUS BLOCKING FOR EXTENTS OF EXTERIOR WALL ABOVE BTWN T/B EAM AND B/DECK.
K	(4) 2x8 HIGH & LOW W/ (2) TOP PL & 2x8 BOTT PL W/ 1 JACK / 3 KING EA END W/ (4) 2x8 JACKS AT INTERIOR JAMBS. AT LOW HEADER INTERIOR JAMBS TO HAVE OUTER PLYS INTERRUPTED.

CLUBHOUSE HEADERS/BEAMS SCHEDULE			
MARK	HEADER	JAMB TYPE #	NOTES
C1	(3) 2x6	1 JACK / 1 KING	AT SHARED JAMBED WITH OTHER C1 PROVIDE 1 JACK / 1 KING / 1 JACK
D1	(3) 2x8	1 JACK / 1 KING	
D2	(3) 2x8	1 JACK / 2 KING	
E1	(3) 2x10	1 JACK / 1 KING	
E2	(3) 2x10	1 JACK / 2 KING	
F1	(3) 2x12	1 JACK / 2 KING	
F2	(3) 2x12	2 JACK / 2 KING	
J1	(3) 1 3/4"x7 1/8" LVL	2 JACK / 2 KING	
N1	(3) 1 3/4"x11 1/4" LVL	2 JACK / 2 KING	
Q1	(3) 1 3/4"x14" LVL		HGU5.50-SDS (H=14") HANGER @ BEAM CONNECTION
S1	(3) 1 3/4"x16" LVL	3 KING	
T1	(2) 1 3/4"x18" LVL	3 KING	SIMPSON HU416 TO Y1 BEAM
U1	(3) 1 3/4"x18" LVL	3 KING	
V1	(4) 1 3/4"x18" LVL	3 KING	
X1	(5) 1 3/4"x18" LVL	4 KING @ WALL / SIMPSON EGS HANGER TO Y1 BEAM	ATTACH PLYS TOGETHER W/ 3 ROWS OF 1/4"x8" SDS SCREWS @ 12"oc FROM EA SIDE - MATCH EDGE DISTANCE PER 5A/S0.02
Y1	(4) 1 3/4"x18" LVL	4 KING	
Z1	(2) 1 3/4"x14" LVL	2 JACK / 2 KING	SIMPSON HUC416 TO BEAM

- NOTES:
- JAMB STUDS SHALL MATCH SIZE & GRADE OF WALL STUDS U.N.O.
 - WHERE BEAM IS NOTED "u", ALL JAMB STUDS NOTED WILL EXTEND TO DOUBLE TOP PLATE.
 - ALL EXTERIOR LUMBER TO BE TREATED AGAINST MOISTURE. REFER TO NOTE 12.T ON SHEET S0.01 FOR FIRE RETARDANT TREATED HEADER AND STUD REQUIREMENTS.
 - PROVIDE SQUASH BLOCKS AT TRUSSES & BLOCKING FRAMING WHERE JAMBS OR STUD PACKS ARE DISCONT AND IN TRUSS CAVITY. QUANTITY TO MATCH JAMB OR STUD PACK ABOVE.
 - PROVIDE 1/2" PLYWOOD SPACER PLATES AT INTERIOR HEADERS CONSTRUCTED WITH 2x LUMBER.
 - AT CONTRACTOR'S OPTION, PROVIDE GLULAM IN LIEU OF PSL OF EQUAL OR GREATER STRENGTH.
 - REFER TO DETAIL 4/S0.02 FOR MULTI-PLY MEMBER CONNECTION REQUIREMENTS.
 - ATTACH JAMB & KING STUDS TOGETHER PER CONNECTION TYPE 24 ON NAILING SCHEDULE ON S0.01.

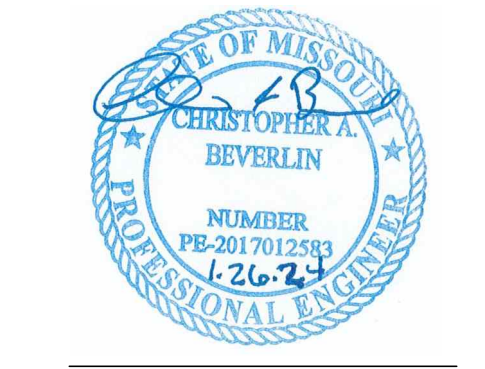


1 CLUBHOUSE ROOF FRAMING PLAN

- 3/16" = 1'-0"
- WOOD ROOF FRAMING NOTES:
- REFER TO GENERAL NOTES ON SHEET S0.01
 - REFER TO STUD BEARING WALL SCHEDULE TO SHEET S0.02
 - REFER TO HEADER/BEAM SCHEDULE ON SHEET S0.02
 - REFER TO SHEARWALL SCHEDULE ON SHEET S0.03
 - PROVIDE (3) STUD (MINIMUM) ALIGNED UNDER EACH END OF GIRDER TRUSS (CONTINUOUS FOUNDATION) - FINAL QUANTITY TO MATCH NUMBER OF PLYS OF GIRDER TRUSS. PROVIDE SIMPSON LSTA-STYLE HOLDOWN AT EACH END OF GIRDER TRUSS
 - REFER TO S3.40-SERIES DRAWINGS FOR ADDITIONAL ROOF FRAMING DETAILS NOT INDICATED HERE.
 - PROVIDE UNIFORM UPLIFT SCREWS AT UPPER FLOOR PER DETAILS 2.2A, 3.3A, 3B, 4 AND 5 ON SHEET S0.20.
 - PRE-ENGINEERED TRUSSES TO HAVE A MINIMUM DEPTH OF 24". SLOPE TOP CHORD PER ARCHITECTURAL DRAWINGS.
 - INDICATES AREA ON ROOF THAT IS REQ'D TO BE DESIGNED FOR MEP EQUIPMENT ZONE PER GENERAL NOTE 7.6" ON SHEET S0.01
 - TOP OF STEEL ELEVATION FOR STEEL BEARING ON WOOD MEMBERS SHALL BE FIELD COORDINATED BY THE CONTRACTOR & ARCHITECTURAL ROUGH OPENING SCHEDULE.
 - PRE-ENG TRUSSES TO HAVE SLOPING TOP CHORD WITH MINIMUM TRUSS DEPTH OF 24".

2 CLUBHOUSE ELEVATOR ROOF FRAMING PLAN

- 3/16" = 1'-0"



A NEW DEVELOPMENT:

RESIDENCES AT BLACKWELL

50 Highway & Blackwell, Lee's Summit, MO

DRAWING RELEASE LOG

REVISIONS:	
1	4/25/2023 Addendum 1
5	12/15/2023 Addendum #7
6	1/26/2025 Addendum #8

DATE:
3/24/2023

JOB NO.
696521

DRAWN BY:
CAB/JLF

SHEET NO.

PERMIT SET

S2.12