

Re: RB-CLUB-R  
RCC #163591 3/4/24 (MM)

The truss drawing(s) referenced below have been prepared by MiTek USA, Inc. under my direct supervision based on the parameters provided by Mid America MO.

Pages or sheets covered by this seal: I65102626 thru I65102627

My license renewal date for the state of Missouri is December 31, 2025.

Missouri COA: Engineering 001193



April 23, 2024

Sevier, Scott, Engineer

**IMPORTANT NOTE:** The seal on these truss component designs is a certification that the engineer named is licensed in the jurisdiction(s) identified and that the designs comply with ANSI/TPI 1. These designs are based upon parameters shown (e.g., loads, supports, dimensions, shapes and design codes), which were given to MiTek or TRENCO. Any project specific information included is for MiTek's or TRENCO's customers file reference purpose only, and was not taken into account in the preparation of these designs. MiTek or TRENCO has not independently verified the applicability of the design parameters or the designs for any particular building. Before use, the building designer should verify applicability of design parameters and properly incorporate these designs into the overall building design per ANSI/TPI 1, Chapter 2.

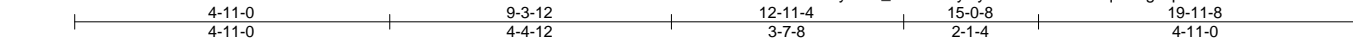
Job	Truss	Truss Type	Qty	Ply	RCC #163591 3/4/24 (MM)	165102626
RB-CLUB-R	T1	Flat	8	1		

Mid America Truss, Jefferson City, MO - 65101,

8.630 s Apr 5 2024 MiTek Industries, Inc. Tue Apr 23 10:25:26 2024 Page 1

ID:oY8vRJBQ5hCyALM\_eDEHTByNyxI-RfC?PsB70Hq3NSgPqnL8w3uITXbGKWrCDoi7J4zJC?f

Job Reference (optional)



Scale = 1:36.0

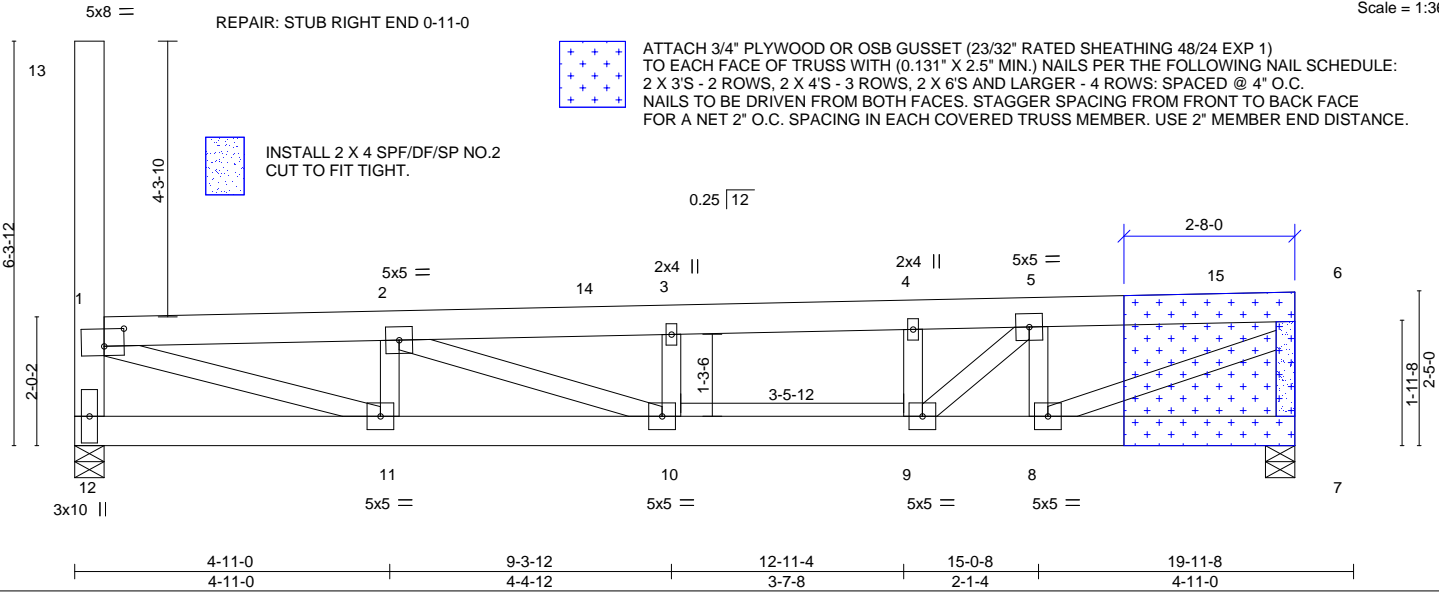


Plate Offsets (X,Y)-- [1:0-3-12,0-3-4]

<b>LOADING</b> (psf)	<b>SPACING-</b>		<b>CSI.</b>	<b>DEFL.</b>	in (loc)	l/defl	L/d	<b>PLATES</b>	<b>GRIP</b>
TCLL (roof) 20.0	Plate Grip DOL 1.15		TC 0.81	Vert(LL) -0.15	10	>999	360	MT20	244/190
Snow (Pf) 20.0	Lumber DOL 1.15		BC 0.54	Vert(CT) -0.25	10-11	>936	360		
TCDL 15.0	Rep Stress Incr NO		WB 0.64	Horz(CT) 0.03	7	n/a	n/a		
BCLL 0.0	Code IBC2018/TPI2014		Matrix-SH						
BCDL 10.0								Weight: 139 lb	FT = 3%

<b>LUMBER-</b>	<b>BRACING-</b>
TOP CHORD 2x6 SP No.1	TOP CHORD Structural wood sheathing directly applied or 4-2-0 oc purlins, except end verticals.
BOT CHORD 2x6 SP No.1	BOT CHORD Rigid ceiling directly applied or 5-8-6 oc bracing.
WEBS 2x4 SP No.2 *Except* 12-13: 2x6 SP No.1	

**REACTIONS.** (size) 12=0-5-8, 7=0-5-8  
 Max Horz 12=287(LC 12)  
 Max Uplift 12=207(LC 11), 7=190(LC 15)  
 Max Grav 12=1306(LC 21), 7=1290(LC 21)

**FORCES.** (lb) - Max. Comp./Max. Ten. - All forces 250 (lb) or less except when shown.  
 TOP CHORD 1-12=-1212/683, 1-2=-2662/1755, 2-3=-3209/1782, 3-4=-3205/1786, 4-5=-3208/1794,  
 5-6=-2520/1227, 6-7=-1195/637  
 BOT CHORD 11-12=-771/919, 10-11=-1800/2654, 9-10=-1818/3203, 8-9=-1246/2512  
 WEBS 1-11=-1441/2538, 2-11=-731/515, 2-10=-664/653, 3-10=-218/303, 5-9=-788/952,  
 5-8=-1097/692, 6-8=-1288/2611, 4-9=-396/355

- NOTES-**
- 1) Wind: ASCE 7-16; Vult=115mph (3-second gust) Vasd=91mph; TCDL=6.0psf; BCDL=6.0psf; h=25ft; Cat. II; Exp C; Pr. Enclosed; MWFRS (envelope) and C-C Corner(3) zone; cantilever left and right exposed ; end vertical left and right exposed;C-C for members and forces & MWFRS for reactions shown; Lumber DOL=1.33 plate grip DOL=1.33
  - 2) TCLL: ASCE 7-16; Pr=20.0 psf (roof LL: Lum DOL=1.15 Plate DOL=1.15); Pf=20.0 psf (Lum DOL=1.15 Plate DOL=1.15); Is=1.0; Rough Cat C; Partially Exp.; Ce=1.0; Cs=1.00; Ct=1.00
  - 3) Unbalanced snow loads have been considered for this design.
  - 4) Provide adequate drainage to prevent water ponding.
  - 5) Plates checked for a plus or minus 3 degree rotation about its center.
  - 6) Provide mechanical connection (by others) of truss to bearing plate capable of withstanding 100 lb uplift at joint(s) except (jt=lb) 12=207, 7=190.
  - 7) This truss is designed in accordance with the 2018 International Building Code section 2306.1 and referenced standard ANSI/TPI 1.
  - 8) Load case(s) 1, 4, 5, 6, 21, 22, 24, 25, 26, 27, 32 has/have been modified. Building designer must review loads to verify that they are correct for the intended use of this truss.

**LOAD CASE(S)** Standard  
 1) Dead + Snow (balanced): Lumber Increase=1.15, Plate Increase=1.15  
 Uniform Loads (plf)  
 Vert: 4-14=-70, 4-15=-150, 6-15=-70, 7-12=-20  
 Trapezoidal Loads (plf)  
 Vert: 1=-150-to-14=-70



April 23, 2024

Continued on page 2

<p><b>WARNING - Verify design parameters and READ NOTES ON THIS AND INCLUDED MITEK REFERENCE PAGE MII-7473 rev. 1/2/2023 BEFORE USE.</b></p> <p>Design valid for use only with MiTek® connectors. This design is based only upon parameters shown, and is for an individual building component, not a truss system. Before use, the building designer must verify the applicability of the design parameters and properly incorporate this design into the overall building design. Bracing indicated is to prevent buckling of individual truss web and/or chord members only. Additional temporary and permanent bracing is always required for stability and to prevent collapse with possible personal injury and property damage. For general guidance regarding the fabrication, storage, delivery, erection and bracing of trusses and truss systems, see <b>ANSI/TPI1 Quality Criteria, and DSB-22</b> available from Truss Plate Institute (www.tpinst.org) and <b>BCSI Building Component Safety Information</b> available from the Structural Building Component Association (www.sbcsccomponents.com)</p>	<p>16023 Swingley Ridge Rd.          Chesterfield, MO 63017          314.434.1200 / MiTek-US.com</p>
---	--

Job	Truss	Truss Type	Qty	Ply	RCC #163591 3/4/24 (MM)	I65102626
RB-CLUB-R	T1	Flat	8	1	Job Reference (optional)	

Mid America Truss, Jefferson City, MO - 65101,

8.630 s Apr 5 2024 MiTek Industries, Inc. Tue Apr 23 10:25:26 2024 Page 2  
ID:oY8vRJBQ5hCyALM\_eDEHTByNyxI-RfC?PsB70Hq3NSgPqnL8w3uITXbGKWrCDoi7J4zJC?f

**LOAD CASE(S)** Standard

- 4) Dead + 0.75 Snow (balanced): Lumber Increase=1.15, Plate Increase=1.15  
Uniform Loads (plf)  
Vert: 4-14=-60, 4-15=-120, 6-15=-60, 7-12=-20  
Trapezoidal Loads (plf)  
Vert: 1=-120-to-14=-60
- 5) Dead + 0.75 Snow (Unbal. Left): Lumber Increase=1.15, Plate Increase=1.15  
Uniform Loads (plf)  
Vert: 4-14=-65, 4-15=-125, 6-15=-65, 7-12=-20  
Trapezoidal Loads (plf)  
Vert: 1=-125-to-14=-65
- 6) Dead + 0.75 Snow (Unbal. Right): Lumber Increase=1.15, Plate Increase=1.15  
Uniform Loads (plf)  
Vert: 4-14=-39, 4-15=-99, 6-15=-39, 7-12=-20  
Trapezoidal Loads (plf)  
Vert: 1=-99-to-14=-39
- 21) Dead + Snow (Unbal. Left): Lumber Increase=1.15, Plate Increase=1.15  
Uniform Loads (plf)  
Vert: 4-14=-77, 4-15=-157, 6-15=-77, 7-12=-20  
Trapezoidal Loads (plf)  
Vert: 1=-157-to-14=-77
- 22) Dead + Snow (Unbal. Right): Lumber Increase=1.15, Plate Increase=1.15  
Uniform Loads (plf)  
Vert: 4-14=-42, 4-15=-122, 6-15=-42, 7-12=-20  
Trapezoidal Loads (plf)  
Vert: 1=-122-to-14=-42
- 24) Dead + 0.75 Snow (bal.) + 0.75(0.6 MWFRS Wind (Neg. Int) Left): Lumber Increase=1.33, Plate Increase=1.33  
Uniform Loads (plf)  
Vert: 4-14=-57, 4-15=-117, 6-15=-57, 7-12=-20  
Horz: 1-12=27, 1-13=38, 1-6=-3, 6-7=-4  
Trapezoidal Loads (plf)  
Vert: 1=-117-to-14=-57
- 25) Dead + 0.75 Snow (bal.) + 0.75(0.6 MWFRS Wind (Neg. Int) Right): Lumber Increase=1.33, Plate Increase=1.33  
Uniform Loads (plf)  
Vert: 4-14=-64, 4-15=-124, 6-15=-64, 7-12=-20  
Horz: 1-12=4, 1-13=-38, 1-6=4, 6-7=-27  
Trapezoidal Loads (plf)  
Vert: 1=-124-to-14=-64
- 26) Dead + 0.75 Snow (bal.) + 0.75(0.6 MWFRS Wind (Neg. Int) 1st Parallel): Lumber Increase=1.33, Plate Increase=1.33  
Uniform Loads (plf)  
Vert: 4-14=-57, 4-15=-117, 6-15=-57, 7-12=-20  
Horz: 1-12=23, 1-13=-25, 1-6=-3, 6-7=-6  
Trapezoidal Loads (plf)  
Vert: 1=-117-to-14=-57
- 27) Dead + 0.75 Snow (bal.) + 0.75(0.6 MWFRS Wind (Neg. Int) 2nd Parallel): Lumber Increase=1.33, Plate Increase=1.33  
Uniform Loads (plf)  
Vert: 4-14=-64, 4-15=-124, 6-15=-64, 7-12=-20  
Horz: 1-12=6, 1-13=-25, 1-6=4, 6-7=-23  
Trapezoidal Loads (plf)  
Vert: 1=-124-to-14=-64
- 32) Dead + Minimum Snow: Lumber Increase=1.15, Plate Increase=1.15  
Uniform Loads (plf)  
Vert: 4-14=-70, 4-15=-150, 6-15=-70, 7-12=-20  
Trapezoidal Loads (plf)  
Vert: 1=-150-to-14=-70

**WARNING - Verify design parameters and READ NOTES ON THIS AND INCLUDED MITEK REFERENCE PAGE MII-7473 rev. 1/2/2023 BEFORE USE.**

Design valid for use only with MiTek® connectors. This design is based only upon parameters shown, and is for an individual building component, not a truss system. Before use, the building designer must verify the applicability of design parameters and properly incorporate this design into the overall building design. Bracing indicated is to prevent buckling of individual truss web and/or chord members only. Additional temporary and permanent bracing is always required for stability and to prevent collapse with possible personal injury and property damage. For general guidance regarding the fabrication, storage, delivery, erection and bracing of trusses and truss systems, see **ANSI/TPI1 Quality Criteria, and DSB-22** available from Truss Plate Institute ([www.tpinst.org](http://www.tpinst.org)) and **BCSI Building Component Safety Information** available from the Structural Building Component Association ([www.sbcsccomponents.com](http://www.sbcsccomponents.com))

**MiTek®**

16023 Swingley Ridge Rd.  
Chesterfield, MO 63017  
314.434.1200 / MiTek-US.com

Job	Truss	Truss Type	Qty	Ply	RCC #163591 3/4/24 (MM)	165102627
RB-CLUB-R	T1GR	Roof Special Girder	1	2	Job Reference (optional)	

Mid America Truss, Jefferson City, MO - 65101,

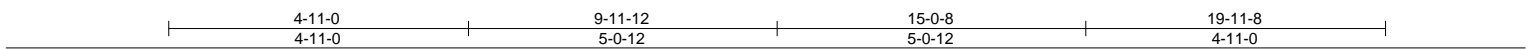
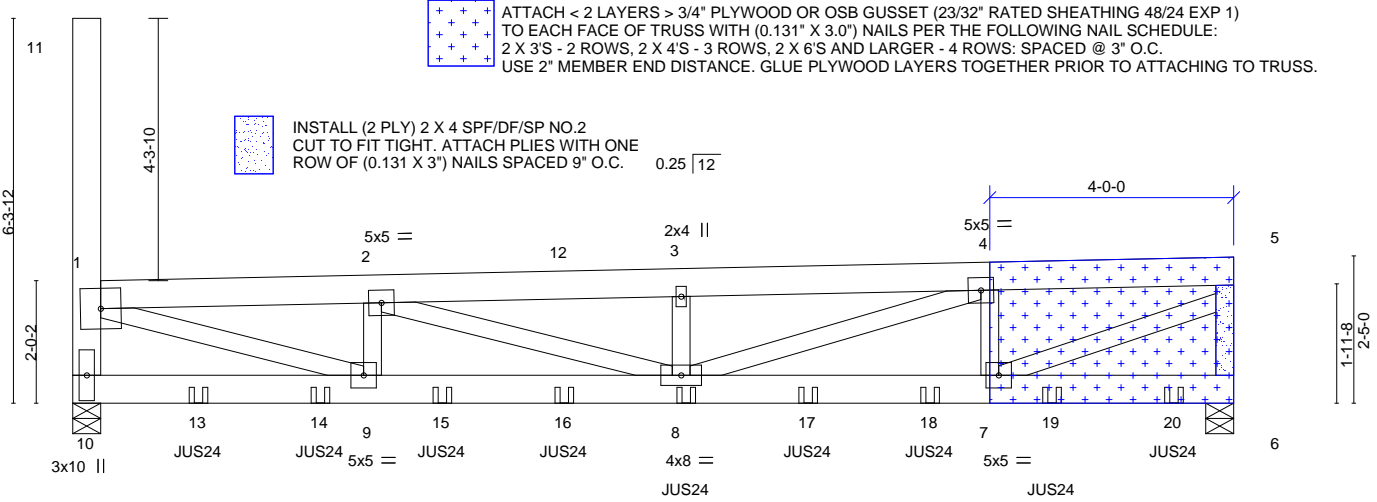
8.630 s Apr 5 2024 MiTek Industries, Inc. Tue Apr 23 10:25:27 2024 Page 1

ID:oY8vRJBQ5hCyALM\_eDEHTByNyxI-RfC?PsB70Hq3NSgPqnL8w3ulTXbGKWrCDoi7J4zJC?f



8x8 = REPAIR: STUB RIGHT END 0-11-0

Scale = 1:37.8



<b>LOADING</b> (psf)	<b>SPACING-</b>	<b>CSI.</b>	<b>DEFL.</b>	<b>PLATES</b>	<b>GRIP</b>
TCLL (roof) 20.0	2-0-0	TC 0.53	in (loc) l/defl L/d	MT20	244/190
Snow (Pf) 20.0	Plate Grip DOL 1.15	BC 0.51	Vert(LL) 0.26 8-9 >918 360		
TCDL 15.0	Lumber DOL 1.15	WB 0.64	Vert(CT) -0.26 8-9 >919 360		
BCLL 0.0	Rep Stress Incr NO	Matrix-P	Horz(CT) -0.03 6 n/a n/a		
BCDL 10.0	Code IBC2018/TPI2014			Weight: 284 lb	FT = 3%

<b>LUMBER-</b>	<b>BRACING-</b>
TOP CHORD 2x6 SP No.1	TOP CHORD Structural wood sheathing directly applied or 5-11-9 oc purlins, except end verticals.
BOT CHORD 2x6 SP No.1	BOT CHORD Rigid ceiling directly applied or 6-9-6 oc bracing.
WEBS 2x4 SP No.2 *Except* 10-11: 2x6 SP No.1	

**REACTIONS.** (size) 10=0-5-8, 6=0-5-8  
 Max Horz 10=287(LC 12)  
 Max Uplift 10=1895(LC 11), 6=1883(LC 15)  
 Max Grav 10=2723(LC 50), 6=2715(LC 52)

**FORCES.** (lb) - Max. Comp./Max. Ten. - All forces 250 (lb) or less except when shown.  
 TOP CHORD 1-10=-2449/2144, 1-2=-6178/5756, 2-3=-7633/7088, 3-4=-7632/7097, 4-5=-5533/4966, 5-6=-2429/2105  
 BOT CHORD 9-10=-918/1013, 8-9=-5798/6159, 7-8=-4984/5493  
 WEBS 1-9=-5354/5988, 2-9=-828/746, 2-8=-1938/1907, 3-8=-369/392, 4-8=-2279/2343, 4-7=-1191/1105, 5-7=-5378/5948

- NOTES-**
- 2-ply truss to be connected together with 10d (0.131"x3") nails as follows:  
 Top chords connected as follows: 2x6 - 2 rows staggered at 0-9-0 oc, 2x4 - 1 row at 0-9-0 oc.  
 Bottom chords connected as follows: 2x6 - 2 rows staggered at 0-9-0 oc.  
 Webs connected as follows: 2x4 - 1 row at 0-9-0 oc.
  - All loads are considered equally applied to all plies, except if noted as front (F) or back (B) face in the LOAD CASE(S) section. Ply to ply connections have been provided to distribute only loads noted as (F) or (B), unless otherwise indicated.
  - Wind: ASCE 7-16; Vult=115mph (3-second gust) Vasd=91mph; TCDL=6.0psf; BCDL=6.0psf; h=25ft; Cat. II; Exp C; Pr. Enclosed; MWFRS (envelope) and C-C Corner(3) zone; cantilever left and right exposed; end vertical left and right exposed; C-C for members and forces & MWFRS for reactions shown; Lumber DOL=1.33 plate grip DOL=1.33
  - TCLL: ASCE 7-16; Pr=20.0 psf (roof LL: Lum DOL=1.15 Plate DOL=1.15); Pf=20.0 psf (Lum DOL=1.15 Plate DOL=1.15); Is=1.0; Rough Cat C; Partially Exp.; Ce=1.0; Cs=1.00; Ct=1.00
  - Unbalanced snow loads have been considered for this design.
  - Provide adequate drainage to prevent water ponding.
  - Plates checked for a plus or minus 3 degree rotation about its center.
  - Provide mechanical connection (by others) of truss to bearing plate capable of withstanding 100 lb uplift at joint(s) except (jt=lb) 10=1895, 6=1883.
  - This truss is designed in accordance with the 2018 International Building Code section 2306.1 and referenced standard ANSI/TPI 1.
  - Load case(s) 1, 4, 5, 6, 21, 22, 24, 25, 26, 27, 32, 49, 50, 51, 52 has/have been modified. Building designer must review loads to verify that they are correct for the intended use of this truss.
  - Use MiTek JUS24 (With 4-10d nails into Girder & 2-10d nails into Truss) or equivalent spaced at 2-0-0 oc max. starting at 2-0-12 from the left end to 18-0-12 to connect truss(es) to front face of bottom chord.
  - Fill all nail holes where hanger is in contact with lumber.



April 23, 2024

**LOAD CASE(S)** Standard

**WARNING - Verify design parameters and READ NOTES ON THIS AND INCLUDED MITEK REFERENCE PAGE MII-7473 rev. 1/2/2023 BEFORE USE.**

Design valid for use only with MiTek® connectors. This design is based only upon parameters shown, and is for an individual building component, not a truss system. Before use, the building designer must verify the applicability of design parameters and properly incorporate this design into the overall building design. Bracing indicated is to prevent buckling of individual truss web and/or chord members only. Additional temporary and permanent bracing is always required for stability and to prevent collapse with possible personal injury and property damage. For general guidance regarding the fabrication, storage, delivery, erection and bracing of trusses and truss systems, see **ANSI/TPI1 Quality Criteria, and DSB-22** available from Truss Plate Institute (www.tpinst.org) and **BCSI Building Component Safety Information** available from the Structural Building Component Association (www.sbcscomponents.com)

**MiTek®**  
 16023 Swingley Ridge Rd.  
 Chesterfield, MO 63017  
 314.434.1200 / MiTek-US.com

Job	Truss	Truss Type	Qty	Ply	RCC #163591 3/4/24 (MM)	165102627
RB-CLUB-R	T1GR	Roof Special Girder	1	2	Job Reference (optional)	

Mid America Truss, Jefferson City, MO - 65101,

8.630 s Apr 5 2024 MiTek Industries, Inc. Tue Apr 23 10:25:27 2024 Page 2

ID:oY8vRJBQ5hCyALM\_eDEHTByNyxI-RfC?PsB70Hq3NSgPqnL8w3uITXbGKWrCDoi7J4zJC?f

**LOAD CASE(S)** Standard

- 1) Dead + Snow (balanced): Lumber Increase=1.15, Plate Increase=1.15
  - Uniform Loads (plf)
    - Vert: 4-12=-70, 4-5=-150, 6-10=-20
  - Concentrated Loads (lb)
    - Vert: 8=-159(F) 13=-159(F) 14=-159(F) 15=-159(F) 16=-159(F) 17=-159(F) 18=-159(F) 19=-159(F) 20=-159(F)
  - Trapezoidal Loads (plf)
    - Vert: 1=-150-to-12=-70
- 4) Dead + 0.75 Snow (balanced): Lumber Increase=1.15, Plate Increase=1.15
  - Uniform Loads (plf)
    - Vert: 4-12=-60, 4-5=-120, 6-10=-20
  - Concentrated Loads (lb)
    - Vert: 8=-131(F) 13=-131(F) 14=-131(F) 15=-131(F) 16=-131(F) 17=-131(F) 18=-131(F) 19=-131(F) 20=-131(F)
  - Trapezoidal Loads (plf)
    - Vert: 1=-120-to-12=-60
- 5) Dead + 0.75 Snow (Unbal. Left): Lumber Increase=1.15, Plate Increase=1.15
  - Uniform Loads (plf)
    - Vert: 4-12=-65, 4-5=-125, 6-10=-20
  - Concentrated Loads (lb)
    - Vert: 8=-131(F) 13=-131(F) 14=-131(F) 15=-131(F) 16=-131(F) 17=-131(F) 18=-131(F) 19=-131(F) 20=-131(F)
  - Trapezoidal Loads (plf)
    - Vert: 1=-125-to-12=-65
- 6) Dead + 0.75 Snow (Unbal. Right): Lumber Increase=1.15, Plate Increase=1.15
  - Uniform Loads (plf)
    - Vert: 4-12=-39, 4-5=-99, 6-10=-20
  - Concentrated Loads (lb)
    - Vert: 8=-131(F) 13=-131(F) 14=-131(F) 15=-131(F) 16=-131(F) 17=-131(F) 18=-131(F) 19=-131(F) 20=-131(F)
  - Trapezoidal Loads (plf)
    - Vert: 1=-99-to-12=-39
- 21) Dead + Snow (Unbal. Left): Lumber Increase=1.15, Plate Increase=1.15
  - Uniform Loads (plf)
    - Vert: 4-12=-77, 4-5=-157, 6-10=-20
  - Concentrated Loads (lb)
    - Vert: 8=-159(F) 13=-159(F) 14=-159(F) 15=-159(F) 16=-159(F) 17=-159(F) 18=-159(F) 19=-159(F) 20=-159(F)
  - Trapezoidal Loads (plf)
    - Vert: 1=-157-to-12=-77
- 22) Dead + Snow (Unbal. Right): Lumber Increase=1.15, Plate Increase=1.15
  - Uniform Loads (plf)
    - Vert: 4-12=-42, 4-5=-122, 6-10=-20
  - Concentrated Loads (lb)
    - Vert: 8=-159(F) 13=-159(F) 14=-159(F) 15=-159(F) 16=-159(F) 17=-159(F) 18=-159(F) 19=-159(F) 20=-159(F)
  - Trapezoidal Loads (plf)
    - Vert: 1=-122-to-12=-42
- 24) Dead + 0.75 Snow (bal.) + 0.75(0.6 MWFRS Wind (Neg. Int) Left): Lumber Increase=1.33, Plate Increase=1.33
  - Uniform Loads (plf)
    - Vert: 4-12=-57, 4-5=-117, 6-10=-20
    - Horz: 1-10=27, 1-11=38, 1-5=-3, 5-6=-4
  - Concentrated Loads (lb)
    - Vert: 8=221(F) 13=222(F) 14=222(F) 15=222(F) 16=221(F) 17=221(F) 18=220(F) 19=220(F) 20=219(F)
  - Trapezoidal Loads (plf)
    - Vert: 1=-117-to-12=-57
- 25) Dead + 0.75 Snow (bal.) + 0.75(0.6 MWFRS Wind (Neg. Int) Right): Lumber Increase=1.33, Plate Increase=1.33
  - Uniform Loads (plf)
    - Vert: 4-12=-64, 4-5=-124, 6-10=-20
    - Horz: 1-10=4, 1-11=-38, 1-5=4, 5-6=-27
  - Concentrated Loads (lb)
    - Vert: 8=221(F) 13=222(F) 14=222(F) 15=222(F) 16=221(F) 17=221(F) 18=220(F) 19=220(F) 20=219(F)
  - Trapezoidal Loads (plf)
    - Vert: 1=-124-to-12=-64
- 26) Dead + 0.75 Snow (bal.) + 0.75(0.6 MWFRS Wind (Neg. Int) 1st Parallel): Lumber Increase=1.33, Plate Increase=1.33
  - Uniform Loads (plf)
    - Vert: 4-12=-57, 4-5=-117, 6-10=-20
    - Horz: 1-10=23, 1-11=-25, 1-5=-3, 5-6=-6
  - Concentrated Loads (lb)
    - Vert: 8=221(F) 13=222(F) 14=222(F) 15=222(F) 16=221(F) 17=221(F) 18=220(F) 19=220(F) 20=219(F)
  - Trapezoidal Loads (plf)
    - Vert: 1=-117-to-12=-57
- 27) Dead + 0.75 Snow (bal.) + 0.75(0.6 MWFRS Wind (Neg. Int) 2nd Parallel): Lumber Increase=1.33, Plate Increase=1.33
  - Uniform Loads (plf)
    - Vert: 4-12=-64, 4-5=-124, 6-10=-20
    - Horz: 1-10=6, 1-11=-25, 1-5=4, 5-6=-23
  - Concentrated Loads (lb)
    - Vert: 8=221(F) 13=222(F) 14=222(F) 15=222(F) 16=221(F) 17=221(F) 18=220(F) 19=220(F) 20=219(F)
  - Trapezoidal Loads (plf)
    - Vert: 1=-124-to-12=-64
- 32) Dead + Minimum Snow: Lumber Increase=1.15, Plate Increase=1.15

Continued on page 3

**WARNING - Verify design parameters and READ NOTES ON THIS AND INCLUDED MITEK REFERENCE PAGE MII-7473 rev. 1/2/2023 BEFORE USE.**

Design valid for use only with MiTek® connectors. This design is based only upon parameters shown, and is for an individual building component, not a truss system. Before use, the building designer must verify the applicability of design parameters and properly incorporate this design into the overall building design. Bracing indicated is to prevent buckling of individual truss web and/or chord members only. Additional temporary and permanent bracing is always required for stability and to prevent collapse with possible personal injury and property damage. For general guidance regarding the fabrication, storage, delivery, erection and bracing of trusses and truss systems, see **ANSI/TPI1 Quality Criteria, and DSB-22** available from Truss Plate Institute ([www.tpinst.org](http://www.tpinst.org)) and **BCSI Building Component Safety Information** available from the Structural Building Component Association ([www.sbcsccomponents.com](http://www.sbcsccomponents.com))

**MiTek®**

16023 Swingley Ridge Rd.  
Chesterfield, MO 63017  
314.434.1200 / MiTek-US.com

Job	Truss	Truss Type	Qty	Ply	RCC #163591 3/4/24 (MM)	165102627
RB-CLUB-R	T1GR	Roof Special Girder	1	2	Job Reference (optional)	

Mid America Truss, Jefferson City, MO - 65101,

8.630 s Apr 5 2024 MiTek Industries, Inc. Tue Apr 23 10:25:27 2024 Page 3  
 ID:oY8vRJBQ5hCyALM\_eDEHTByNyxI-RfC?PsB70Hq3NSgPqnL8w3uITXbGKWrCDoi7J4zJC?f

**LOAD CASE(S)** Standard

- Uniform Loads (plf)
  - Vert: 4-12=-70, 4-5=-150, 6-10=-20
- Concentrated Loads (lb)
  - Vert: 8=-159(F) 13=-159(F) 14=-159(F) 15=-159(F) 16=-159(F) 17=-159(F) 18=-159(F) 19=-159(F) 20=-159(F)
- Trapezoidal Loads (plf)
  - Vert: 1=-150-to-12=-70
- 49) Reversal: Dead + 0.75 Snow (bal.) + 0.75(0.6 MWFRS Wind (Neg. Int) Left): Lumber Increase=1.33, Plate Increase=1.33
  - Uniform Loads (plf)
    - Vert: 4-12=-57, 4-5=-117, 6-10=-20
    - Horz: 1-10=27, 1-11=38, 1-5=-3, 5-6=-4
  - Concentrated Loads (lb)
    - Vert: 8=-362(F) 13=-363(F) 14=-363(F) 15=-362(F) 16=-362(F) 17=-361(F) 18=-361(F) 19=-360(F) 20=-360(F)
  - Trapezoidal Loads (plf)
    - Vert: 1=-117-to-12=-57
- 50) Reversal: Dead + 0.75 Snow (bal.) + 0.75(0.6 MWFRS Wind (Neg. Int) Right): Lumber Increase=1.33, Plate Increase=1.33
  - Uniform Loads (plf)
    - Vert: 4-12=-64, 4-5=-124, 6-10=-20
    - Horz: 1-10=4, 1-11=-38, 1-5=4, 5-6=-27
  - Concentrated Loads (lb)
    - Vert: 8=-362(F) 13=-363(F) 14=-363(F) 15=-362(F) 16=-362(F) 17=-361(F) 18=-361(F) 19=-360(F) 20=-360(F)
  - Trapezoidal Loads (plf)
    - Vert: 1=-124-to-12=-64
- 51) Reversal: Dead + 0.75 Snow (bal.) + 0.75(0.6 MWFRS Wind (Neg. Int) 1st Parallel): Lumber Increase=1.33, Plate Increase=1.33
  - Uniform Loads (plf)
    - Vert: 4-12=-57, 4-5=-117, 6-10=-20
    - Horz: 1-10=23, 1-11=-25, 1-5=-3, 5-6=-6
  - Concentrated Loads (lb)
    - Vert: 8=-362(F) 13=-363(F) 14=-363(F) 15=-362(F) 16=-362(F) 17=-361(F) 18=-361(F) 19=-360(F) 20=-360(F)
  - Trapezoidal Loads (plf)
    - Vert: 1=-117-to-12=-57
- 52) Reversal: Dead + 0.75 Snow (bal.) + 0.75(0.6 MWFRS Wind (Neg. Int) 2nd Parallel): Lumber Increase=1.33, Plate Increase=1.33
  - Uniform Loads (plf)
    - Vert: 4-12=-64, 4-5=-124, 6-10=-20
    - Horz: 1-10=6, 1-11=-25, 1-5=4, 5-6=-23
  - Concentrated Loads (lb)
    - Vert: 8=-362(F) 13=-363(F) 14=-363(F) 15=-362(F) 16=-362(F) 17=-361(F) 18=-361(F) 19=-360(F) 20=-360(F)
  - Trapezoidal Loads (plf)
    - Vert: 1=-124-to-12=-64

**WARNING - Verify design parameters and READ NOTES ON THIS AND INCLUDED MITEK REFERENCE PAGE MII-7473 rev. 1/2/2023 BEFORE USE.**

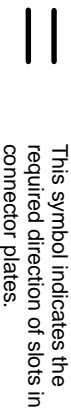
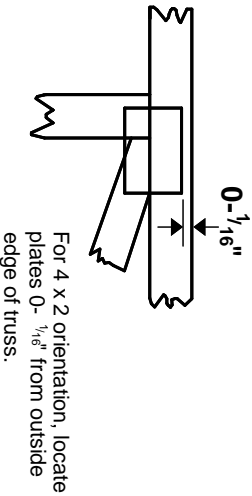
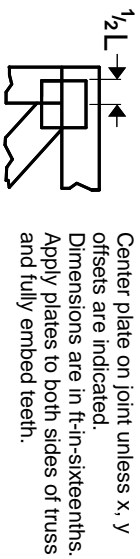
Design valid for use only with MiTek® connectors. This design is based only upon parameters shown, and is for an individual building component, not a truss system. Before use, the building designer must verify the applicability of design parameters and properly incorporate this design into the overall building design. Bracing indicated is to prevent buckling of individual truss web and/or chord members only. Additional temporary and permanent bracing is always required for stability and to prevent collapse with possible personal injury and property damage. For general guidance regarding the fabrication, storage, delivery, erection and bracing of trusses and truss systems, see **ANSI/TPI1 Quality Criteria, and DSB-22** available from Truss Plate Institute ([www.tpinst.org](http://www.tpinst.org)) and **BCSI Building Component Safety Information** available from the Structural Building Component Association ([www.sbcsccomponents.com](http://www.sbcsccomponents.com))



16023 Swingley Ridge Rd.  
 Chesterfield, MO 63017  
 314.434.1200 / MiTek-US.com

# Symbols

## PLATE LOCATION AND ORIENTATION

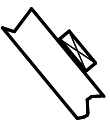


\* Plate location details available in MITtek software or upon request.

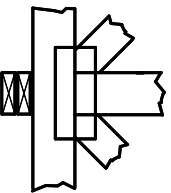
## PLATE SIZE

**4 X 4**  
The first dimension is the plate width measured perpendicular to slots. Second dimension is the length parallel to slots.

## LATERAL BRACING LOCATION



## BEARING

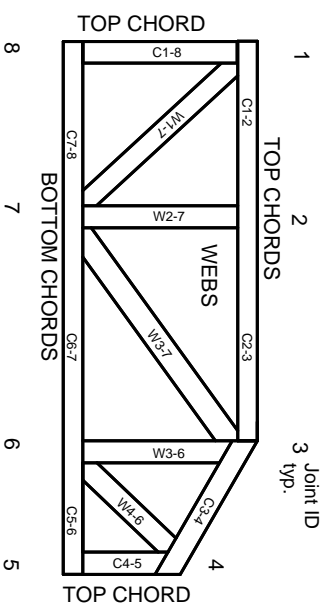


Indicates location where bearings (supports) occur. Icons vary but reaction section indicates joint number/letter where bearings occur. Min size shown is for crushing only.

### Industry Standards:

ANSI/TP1: National Design Specification for Metal Plate Connected Wood Truss Construction.  
DSB-22: Design Standard for Bracing.  
BCSI: Building Component Safety Information, Guide to Good Practice for Handling, Installing, Restraining & Bracing of Metal Plate Connected Wood Trusses.

# Numbering System



**JOINTS ARE GENERALLY NUMBERED/LETTERED CLOCKWISE AROUND THE TRUSS STARTING AT THE JOINT FARTHEST TO THE LEFT.**

**CHORDS AND WEBS ARE IDENTIFIED BY END JOINT NUMBERS/LETTERS.**

## Product Code Approvals

ICC-ES Reports:

ESR-1-1988, ESR-2362, ESR-2685, ESR-3282  
ESR-4722, ESL-1388

## Design General Notes

Trusses are designed for wind loads in the plane of the truss unless otherwise shown.

Lumber design values are in accordance with ANSI/TP1 section 6.3. These truss designs rely on Lumber values established by others.

© 2023 MITtek® All Rights Reserved

# General Safety Notes

## Failure to Follow Could Cause Property Damage or Personal Injury

1. Additional stability/bracing for truss system, e.g. diagonal or X-bracing, is always required. See BCSI.
2. Truss bracing must be designed by an engineer. For wide truss spacing, individual lateral braces themselves may require bracing, or alternative Tor I bracing should be considered.
3. Never exceed the design loading shown and never stack materials on inadequately braced trusses.
4. Provide copies of this truss design to the building designer, erection supervisor, property owner and all other interested parties.
5. Cut members to bear tightly against each other.
6. Place plates on each face of truss at each joint and embed fully. Knots and wane at joint locations are regulated by ANSI/TP1 1.
7. Design assumes trusses will be suitably protected from the environment in accord with ANSI/TP1 1.
8. Unless otherwise noted, moisture content of lumber shall not exceed 19% at time of fabrication.
9. Unless expressly noted, this design is not applicable for use with fire retardant, preservative treated, or green lumber.
10. Camber is a non-structural consideration and is the responsibility of truss fabricator. General practice is to camber for dead load deflection.
11. Plate type, size, orientation and location dimensions indicated are minimum plating requirements.
12. Lumber used shall be of the species and size, and in all respects, equal to or better than that specified.
13. Top chords must be sheathed or purlins provided at spacing indicated on design.
14. Bottom chords require lateral bracing at 10 ft. spacing, or less, if no ceiling is installed, unless otherwise noted.
15. Connections not shown are the responsibility of others.
16. Do not cut or alter truss member or plate without prior approval of an engineer.
17. Install and load vertically unless indicated otherwise.
18. Use of green or treated lumber may pose unacceptable environmental, health or performance risks. Consult with project engineer before use.
19. Review all portions of this design (front, back, words and pictures) before use. Reviewing pictures alone is not sufficient.
20. Design assumes manufacture in accordance with ANSI/TP1 1 Quality Criteria.
21. The design does not take into account any dynamic or other loads other than those expressly stated.

# MITek®

MITtek Engineering Reference Sheet: Mill-7473 rev. 1/2/2023