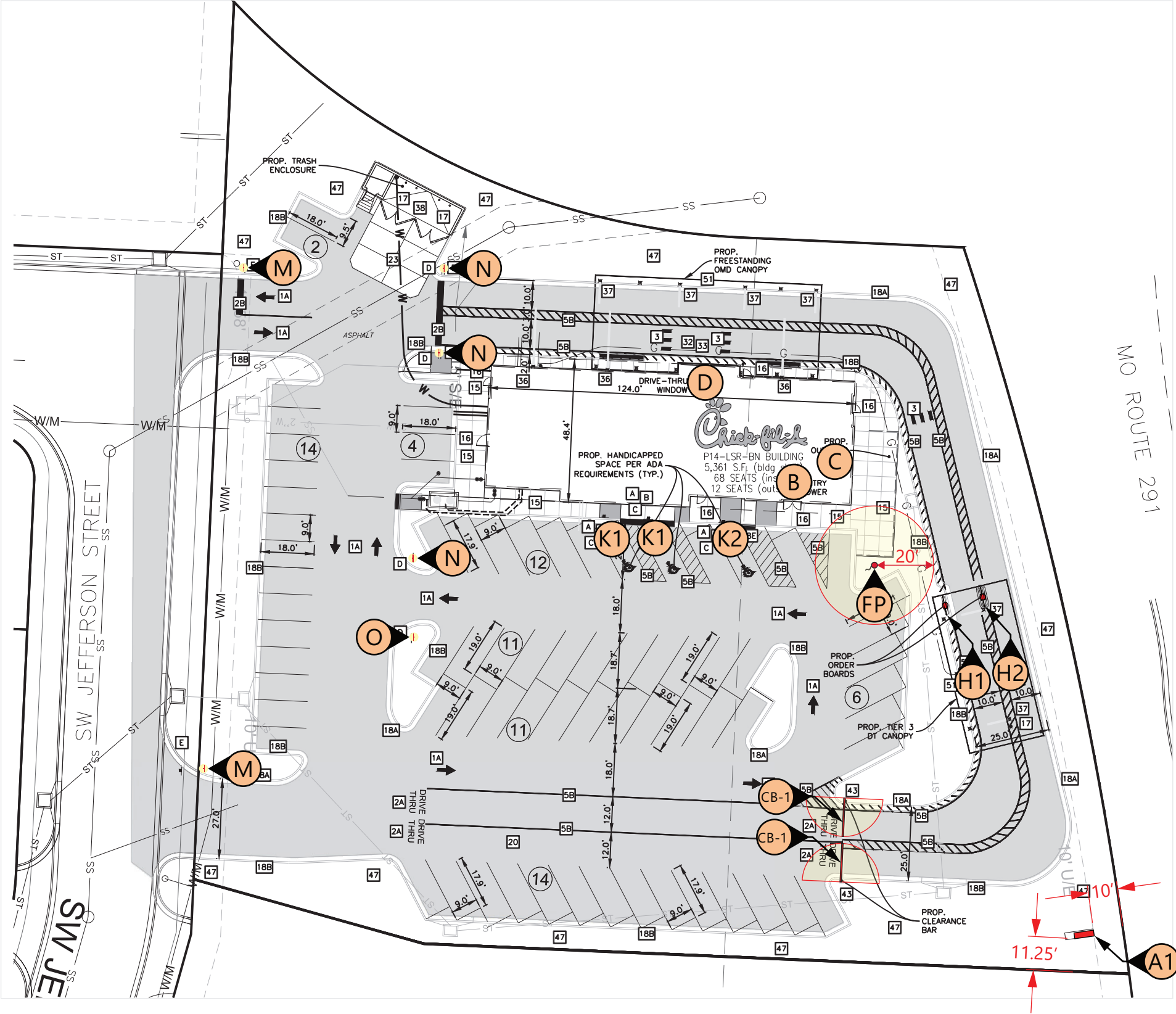


Item	Description	Qty	Sign Area	Allowed
A1	Main ID Sign	1	70.00	72.00
A2	Tenant Panels	2	12.00	12.00
A3	Tenant Panels	2	12.00	12.00
B	Wall Sign - Script 5.0' (red)	1	37.71	262.49
C	Wall Sign - Script 5.0' (red)	1	37.71	102.49
D	Wall Sign - Icon 6.0'	1	36.00	102.49

Item	Description	Qty
K1	DOT - Handicapped Parking	2
K2	DOT - Handicapped Parking (Van)	1
M	DOT - Stop (30")	2
N	DOT - Stop / Do Not Enter	3
O	DOT - Do Not Enter	1
H1-H2	Menu Board (Lane 1 and 2)	2
CB-1	Clearance Bar (single) 13.00'	2
FP	Flag pole (25') High Wind	1
	Push Pull Graphics	1
	Vestibule Graphics	2
	Vinyl Door Graphics	1



5198 North Lake Drive
Lake City, GA 30260
404.361.3800
www.claytonsigns.com

SITE PLAN

DRAWING FILE - CFA - LEE'S SUMMIT, MO (US 50 & SR 291) SIGNAGE.CDR

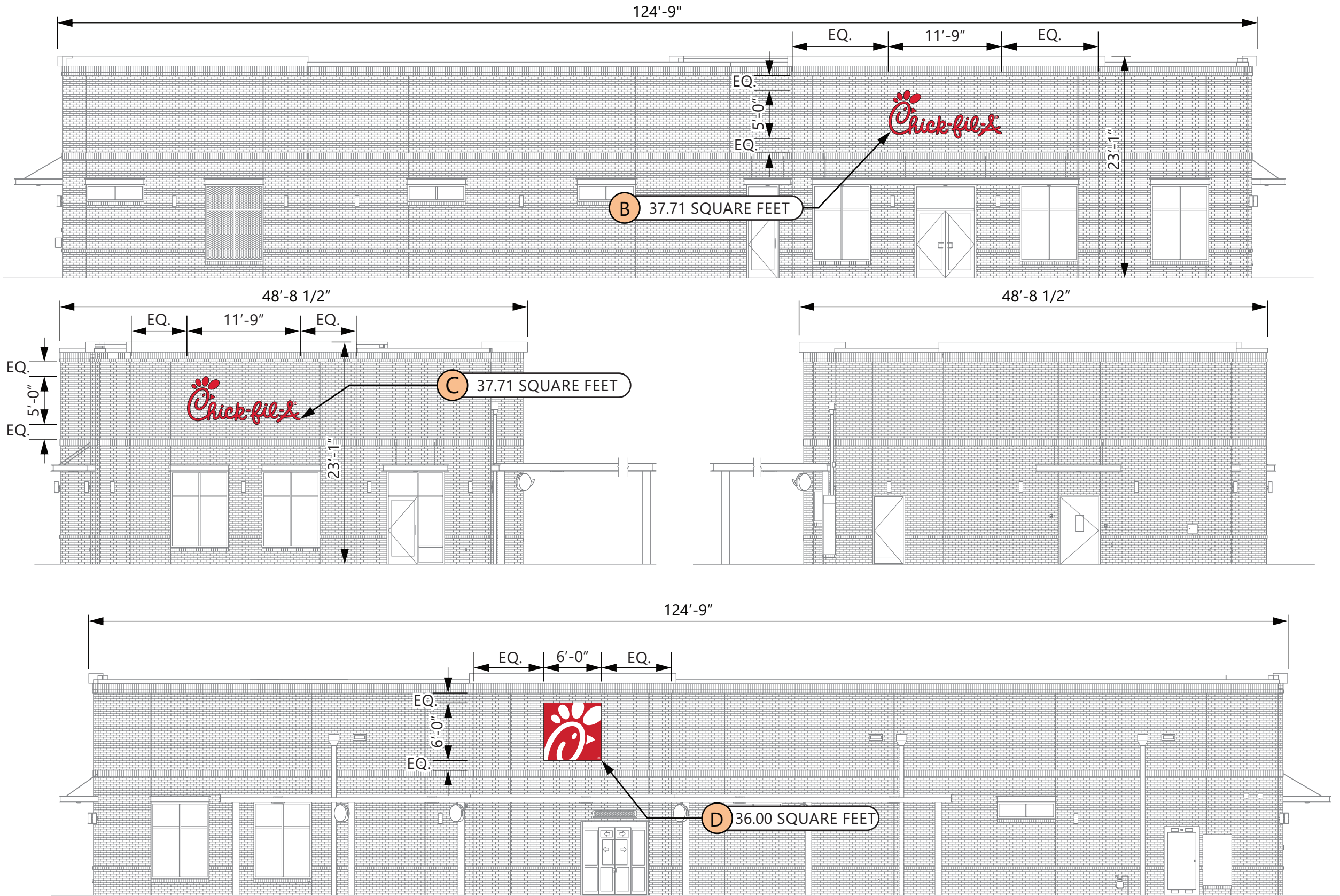
ALL ELECTRICAL
SIGNS ARE
120 VOLTS
UNLESS
OTHERWISE INDICATED

DRAWN BY Ben Holliday
ACCOUNT REP. Ben Holliday
DRAWING DATE July 27, 2023
REVISION DATE September 11, 2025

STORE NUMBER	STORE ADDRESS
L05248	Chick-fil-A at Lee's Summit, MO (US 50 & SR 291) US Hwy 50 and MO State Route 291 Lee's Summit, MO 64081

THIS DRAWING IS AN ORIGINAL, UNPUBLISHED DESIGN CREATED BY CLAYTON SIGNS, INC. IT IS NOT TO BE REPRODUCED, CHANGED, OR EXHIBITED TO ANYONE OUTSIDE OF YOUR COMPANY IN WHOLE OR IN PART WITHOUT WRITTEN PERMISSION FROM THE OWNER OF CLAYTON SIGNS, INC. ANY SUCH ACTIONS MAY BE SUBJECT TO LEGAL ACTION IN A COURT OF LAW.
© 2023 ALL RIGHTS RESERVED

SITE PLAN



SIGN B	
Width (feet)	Width (inches)
124	9.00
Height (feet)	Height (inches)
21	0.50
Area (SQ FT)	
2625	
Multiplier	
10%	
Area Allowed	
262.49	

SIGN C	
Width (feet)	Width (inches)
48	8.50
Height (feet)	Height (inches)
21	0.50
Area (SQ FT)	
1025	
Multiplier	
10%	
Area Allowed	
102.49	

SIGN D	
Width (feet)	Width (inches)
48	8.50
Height (feet)	Height (inches)
21	0.50
Area (SQ FT)	
1025	
Multiplier	
10%	
Area Allowed	
102.49	

ELEVATIONS

SCALE - 3/32" = 1'- 0"



5198 North Lake Drive
Lake City, GA 30260
404.361.3800
www.claytonsigns.com

ELEVATIONS

DRAWING FILE - CFA - LEE'S SUMMIT, MO (US 50 & SR 291) SIGNAGE.CDR

ALL ELECTRICAL
SIGNS ARE
120 VOLTS
UNLESS
OTHERWISE INDICATED

DRAWN BY Ben Holliday
ACCOUNT REP. Ben Holliday
DRAWING DATE July 27, 2023
REVISION DATE September 11, 2025

STORE NUMBER	STORE ADDRESS
L05248	Chick-fil-A at Lee's Summit, MO (US 50 & SR 291) US Hwy 50 and MO State Route 291 Lee's Summit, MO 64081

THIS DRAWING IS AN ORIGINAL, UNPUBLISHED DESIGN CREATED BY CLAYTON SIGNS, INC. IT IS NOT TO BE REPRODUCED, CHANGED, OR EXHIBITED TO ANYONE OUTSIDE OF YOUR COMPANY IN WHOLE OR IN PART WITHOUT WRITTEN PERMISSION FROM THE OWNER OF CLAYTON SIGNS, INC. ANY SUCH ACTIONS MAY BE SUBJECT TO LEGAL ACTION IN A COURT OF LAW.
©2023 ALL RIGHTS RESERVED

P14 LSR BS

BUILDING
ELEVATIONS

SPECIFICATIONS

SIGN CABINET IS SIGN COMP #2005 EXTRUDED CABINET WITH A SIGN COMP # 2085/2095 BLEED FLEX FACE FRAME
CABINET IS INTERNALLY ILLUMINATED WHITE LED 6500K LIGHTS, SPACED EVENLY. PAINT INTERIOR OF CABINETS MATTE WHITE.
CLOSED SUNDAY PANEL (IF SHOWN)
IS .125" ALUM. ROUTED FACE BACKED ACRYLIC.

READER BOARD CABINET (IF SHOWN)
.125" ALUM. FACE PANEL WITH ROUTED OPENING FOR READER BOARD AND COPY READING "CLOSED SUNDAY" APERCU SENTENCE CASE BOLD.
HINGED VANDAL COVER FRAME WITH 187" THICK CLEAR POLYCARBONATE FACE WITH INSET .125" #7328 WHITE.
READER FACE WITH ZIP TRACK TO ACCOMMODATE WAGNER ZIP LETTER SET THAT INCLUDES FRANKLIN GOTHIC EXTRA CONDENSED UPPERCASE LETTER SET OF 334 CHARACTERS WITH PUNCTUATION MARKS.

MASONRY WORK BY THE GENERAL CONTRACTOR
FOUNDATION IS FURNISHED BY CLAYTON SIGNS, INC.

3M #3630-53 TRANSLUCENT CARDINAL RED TENSION FRAME COVER TO BE PAINTED
GENESIS M SINGLE STAGE (G2-SERIES) RED #48247

WHITE BLEED 3M PANOGRAPHIC III FLEX FACE
W/.125" #7328 WHITE PLEX

PAINTED MATTHEWS #74155 DARK BRONZE, SEMI-GLOSS

MASONRY TO MATCH BUILDING

DOUBLE FACED CABINET

LED'S GEWHDSP6 -71K -DOUBLE SIDED

POWER SUPPLY GEPS24 - 24V POWER SUPPLY

WET LOCATION

CONNECT THE AC LINE TO THE BLACK (LINE) AND WHITE (NEUTRAL) INPUT WIRES OF THE POWER SUPPLY (USING 18-14 AWG) TWIST ON WIRE CONNECTORS. GROUND POWER SUPPLY GREEN WIRE TO GROUNDING SCREW. REPLACE JUNCTION BOX COVER.

White (Ground)

Black (Line)

THIS SIGN IS INTENDED TO BE INSTALLED IN ACCORDANCE WITH REQUIREMENTS OF ARTICLE 600 OF THE NATIONAL ELECTRICAL CODE AND/OR APPLICABLE LOCAL CODES. THIS INCLUDES PROPER GROUNDING & BONDING OF THE SIGN.



5198 North Lake Drive
Lake City, GA 30260
404.361.3800
www.claytonsigns.com

MONUMENT SIGN

DRAWING FILE - CFA - LEE'S SUMMIT, MO (US 50 & SR 291) SIGNAGE.CDR

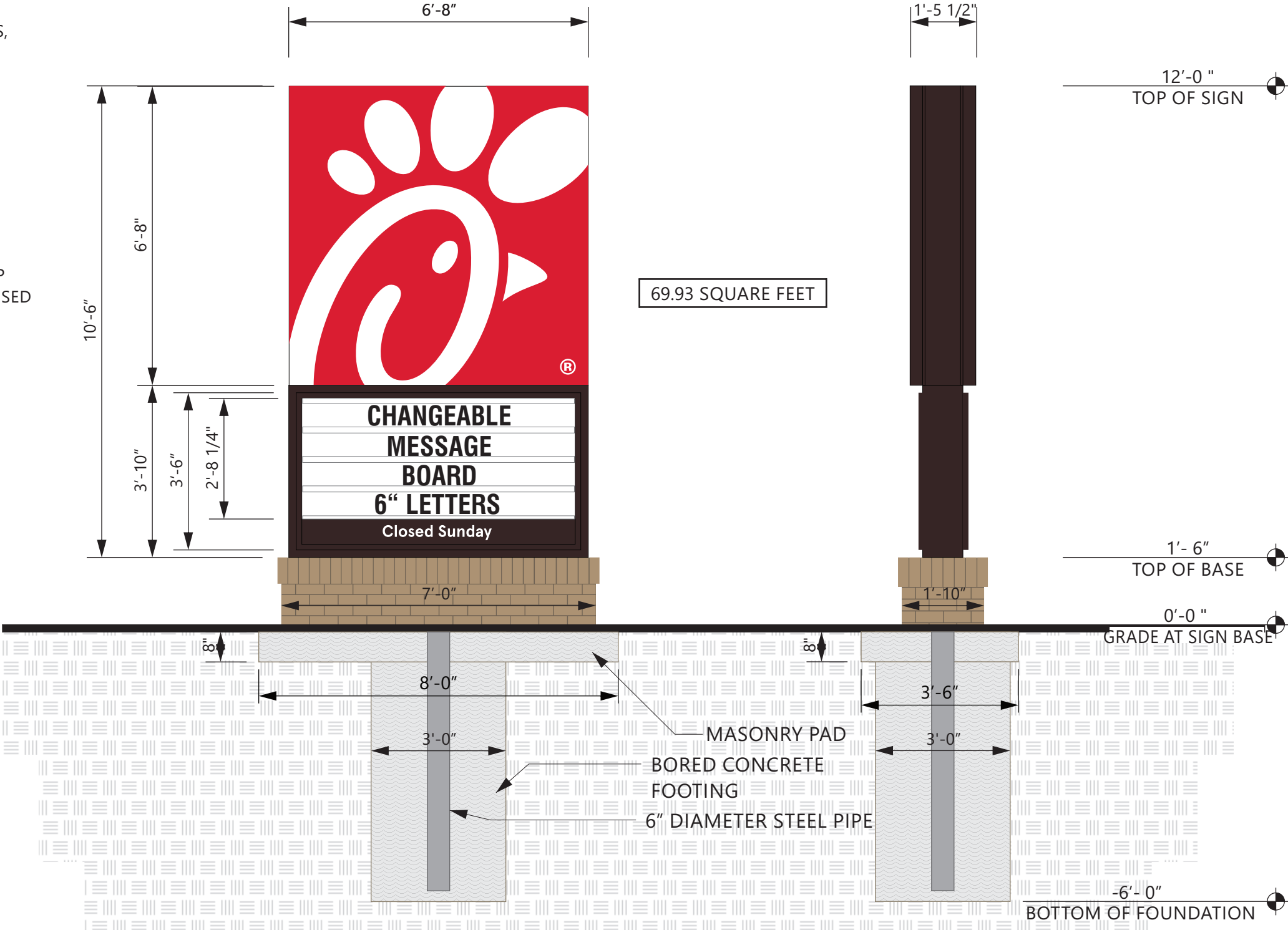
ALL ELECTRICAL
SIGNS ARE
120 VOLTS
UNLESS
OTHERWISE INDICATED

DRAWN BY Ben Holliday
ACCOUNT REP. Ben Holliday
DRAWING DATE July 27, 2023
REVISION DATE September 11, 2025

STORE NUMBER	STORE ADDRESS
L05248	Chick-fil-A at Lee's Summit, MO (US 50 & SR 291) US Hwy 50 and MO State Route 291 Lee's Summit, MO 64081

THIS DRAWING IS AN ORIGINAL, UNPUBLISHED DESIGN CREATED BY CLAYTON SIGNS, INC. IT IS NOT TO BE REPRODUCED, CHANGED, OR EXHIBITED TO ANYONE OUTSIDE OF YOUR COMPANY IN WHOLE OR IN PART WITHOUT WRITTEN PERMISSION FROM THE OWNER OF CLAYTON SIGNS, INC. ANY SUCH ACTIONS MAY BE SUBJECT TO LEGAL ACTION IN A COURT OF LAW.
©2023 ALL RIGHTS RESERVED

LOCATION
A1



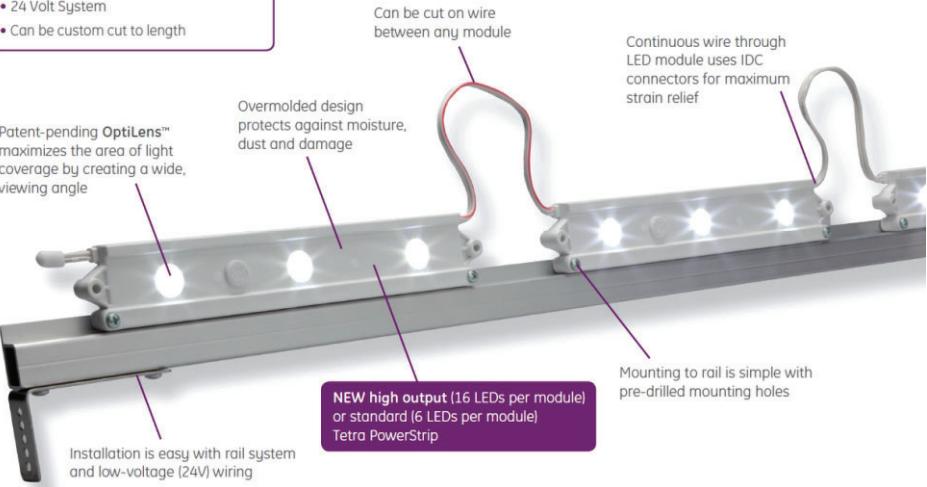
ELEVATION
SCALE - 3/8" = 1'- 0"

END VIEW
SCALE - 3/8" = 1'- 0"

DOUBLE FACED CABINET LIGHTING

Tetra® PowerStrip DS

- Double-sided LED system
- 24 Volt System
- Can be custom cut to length



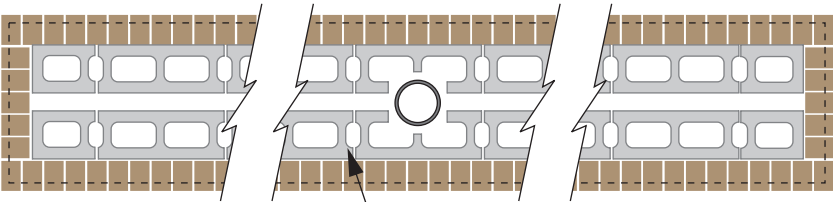
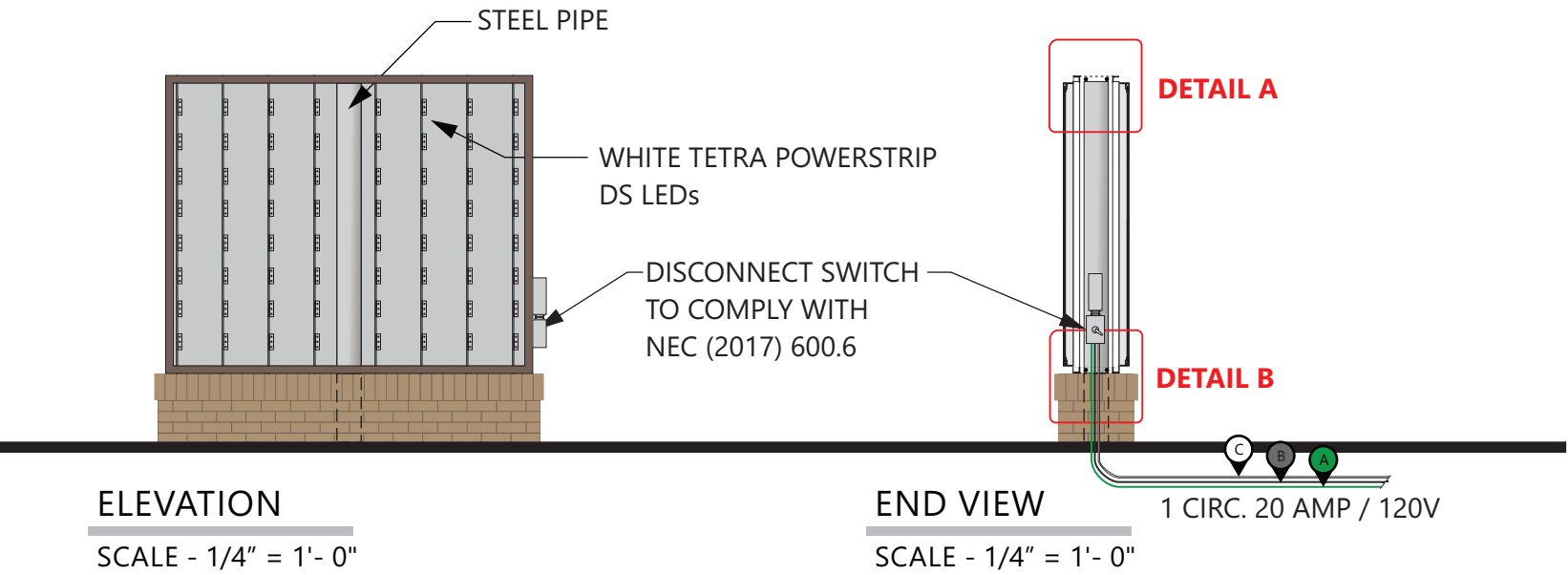
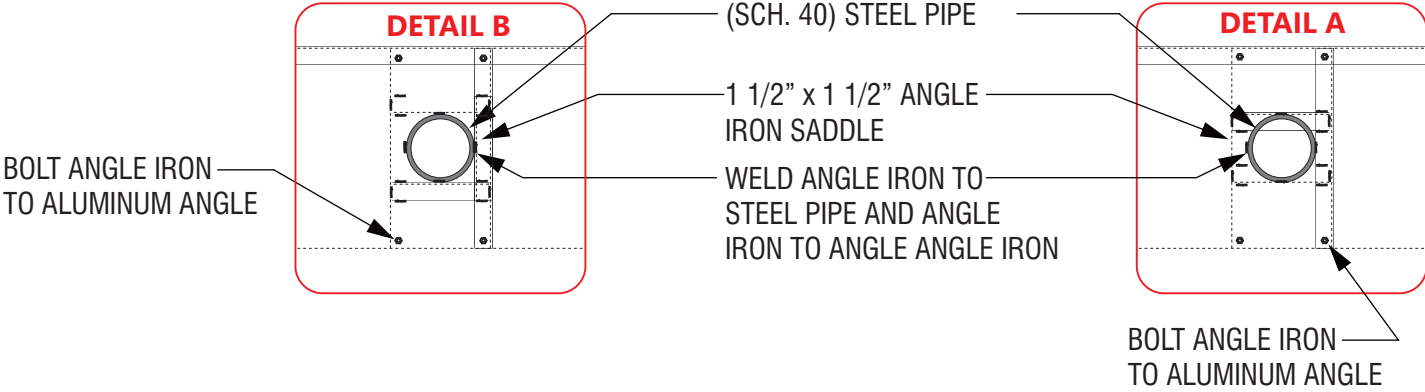
Technical Specifications

Specification Item	Wavelength	Typical Brightness (lumens/module)	LEDs/Module	Energy Consumption (Strip/Module)	Energy Consumption (System/Module)	Power Supply Loading	Viewing Angle
Tetra PowerStrip	7100K, 5000K 4100K, 3200K	267 200	3	3.13	3.58	16 Modules / 60W PS	140°
Tetra PowerStrip DS	7100K, 5000K 4100K, 3200K	534 400	6	6.24	7.14	16 Modules / 100W PS	140°
Tetra PowerStrip High Output	7100K, 5000K 4100K, 3200K	360 260	8	3.63	4.15	16 Modules / 60W PS	140°
Tetra PowerStrip DS High Output	7100K, 5000K 4100K, 3200K	720 520	16	6.55	7.14	14 Modules / 100W PS	140°

Specification Item	Tetra PowerStrip	
Cutting Resolution	Cut on wire between every module	
Power Supply	GEPS12-20 Input: 90-264VAC; Output: 12VDC GEPS12-60-NA Input: 108-305VAC; Output: 12VDC GEPS12-60-GL Input: 108-305VAC; Output: 12VDC GEPS12W-60 Input: 90-264VAC; Output: 12VDC GEPS12D-60U Input: 108-305VAC; Output: 12VDC GEPS12-180U Input: 90-305VAC; Output: 12VDC GEPS24-20 Input: 90-264VAC; Output: 24VDC GEPS24D-80U Input: 90-305VAC; Output: 24VDC GEPS24-100-NA Input: 108-305VAC; Output: 24VDC GEPS24-100-GL Input: 108-305VAC; Output: 24VDC GEPS24-180U Input: 90-305VAC; Output: 24VDC	
Maximum Supply Wire Limits	60W, 80W, 100W, 180W 20 ft. (6.1 m) 25 ft. (7.6 m) 35 ft. (10.6 m) 40 ft. (12.1 m) Wiring to be installed in accordance with Article 725 of the National Electric code (NEC).	20W 120 ft. (36.6 m) 16AWG/1.31mm ² supply wire 14AWG/2.08mm ² supply wire 12AWG/3.31mm ² supply wire
Operating Environment	-40 °C to +60 °C	
Module Dimensions (h x l x w)	Tetra PowerStrip: 0.60 x 1.14 x 8.82 in. (15 x 29 x 224 mm) Tetra PowerStrip DS: 0.63 x 1.34 x 8.82 in. (16 x 34 x 224 mm)	Tetra PowerStrip High Output: 0.47 x 1.12 x 9.29 in. (12 x 29 x 236 mm) Tetra PowerStrip DS High Output: 0.55 x 1.32 x 8.98 in. (14 x 34 x 228 mm)
Sign Dimensions	For best results, recommended sign depth is 5 inches (127 mm) or greater	For best results, recommended sign depth is 10 inches (254 mm) or greater
Warranty	GE offers a limited system warranty of up to five (5) years	
System Certifications	IP66 rated: separate enclosure required, damp location rated	



THIS DRAWING IS INTENDED TO SHOW
GENERAL CONSTRUCTION DETAILS
SIZES OF CABINET
AND BRICK MAY VARY



MASONRY PLAN VIEW

6" OR LESS CMU
INSIDE OF BRICK

Electrical specifications:

Volts:	120	Amp.:	20	Circ.:	1
--------	-----	-------	----	--------	---

Colors:

A	GREEN ELECTRICAL WIRE
B	BLACK ELECTRICAL WIRE
C	WHITE ELECTRICAL WIRE

DOUBLE FACED CABINET

LED'S GEWHDSB6-71K -DOUBLE SIDED
POWER SUPPLY
GEPS24 - 24V POWER SUPPLY

WET LOCATION

CONNECT THE AC LINE TO THE BLACK (LINE) AND WHITE (NEUTRAL) INPUT WIRES OF THE POWER SUPPLY USING 18-14 AWG TWIST ON WIRE CONNECTORS. GROUND POWER SUPPLY GREEN WIRE TO GROUNDING SCREW. REPLACE JUNCTION BOX COVER.

THIS SIGN IS INTENDED TO BE INSTALLED IN ACCORDANCE WITH REQUIREMENTS OF ARTICLE 600 OF THE NATIONAL ELECTRICAL CODE AND/OR APPLICABLE LOCAL CODES. THIS INCLUDES PROPER GROUNDING & BONDING OF THE SIGN.



5198 North Lake Drive
Lake City, GA 30260
404.361.3800
www.claytonsigns.com

MONUMENT SIGN DETAILS

DRAWING FILE - CFA - LEE'S SUMMIT, MO (US 50 & SR 291) SIGNAGE.CDR

ALL ELECTRICAL
SIGNS ARE
120 VOLTS
UNLESS
OTHERWISE INDICATED

DRAWN BY Ben Holliday
ACCOUNT REP. Ben Holliday
DRAWING DATE July 27, 2023
REVISION DATE September 11, 2025

STORE NUMBER	STORE ADDRESS
L05248	Chick-fil-A at Lee's Summit, MO (US 50 & SR 291) US Hwy 50 and MO State Route 291 Lee's Summit, MO 64081

THIS DRAWING IS AN ORIGINAL, UNPUBLISHED DESIGN CREATED BY CLAYTON SIGNS, INC. IT IS NOT TO BE REPRODUCED, CHANGED, OR EXHIBITED TO ANYONE OUTSIDE OF YOUR COMPANY IN WHOLE OR IN PART WITHOUT WRITTEN PERMISSION FROM THE OWNER OF CLAYTON SIGNS, INC.. ANY SUCH ACTIONS MAY BE SUBJECT TO LEGAL ACTION IN A COURT OF LAW.

©2023 ALL RIGHTS RESERVED

LOCATION
A1

SPECIFICATIONS

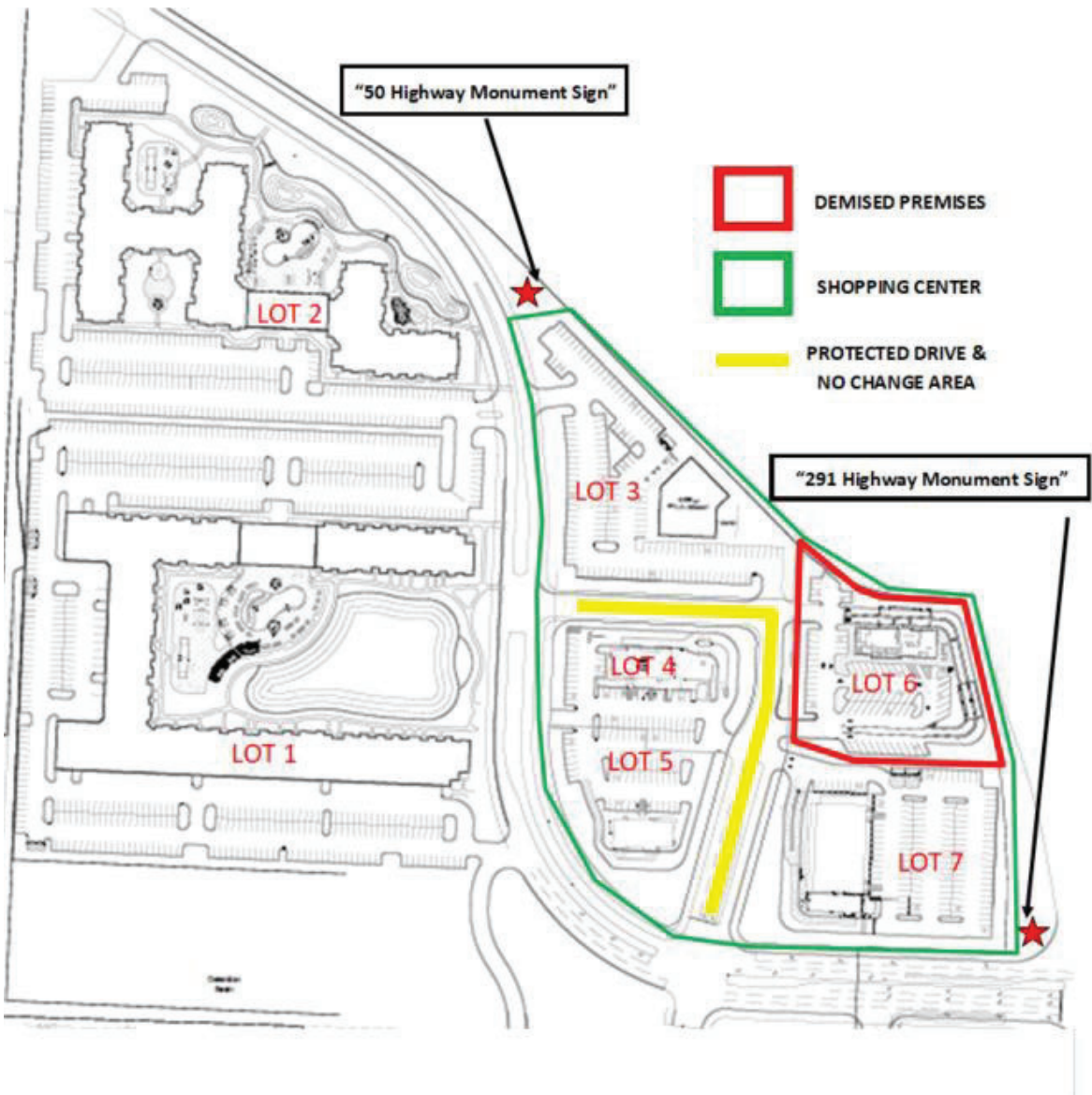
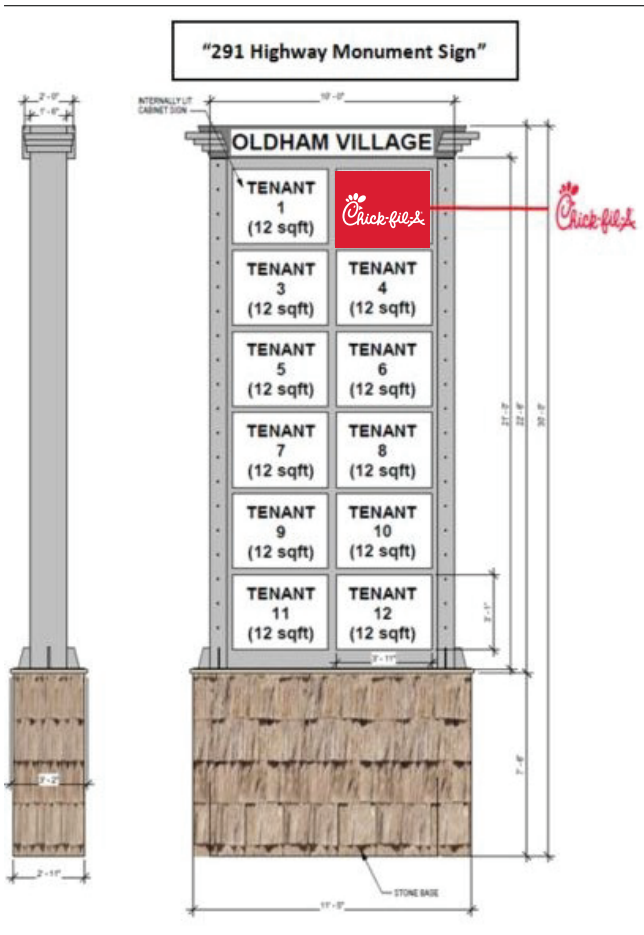
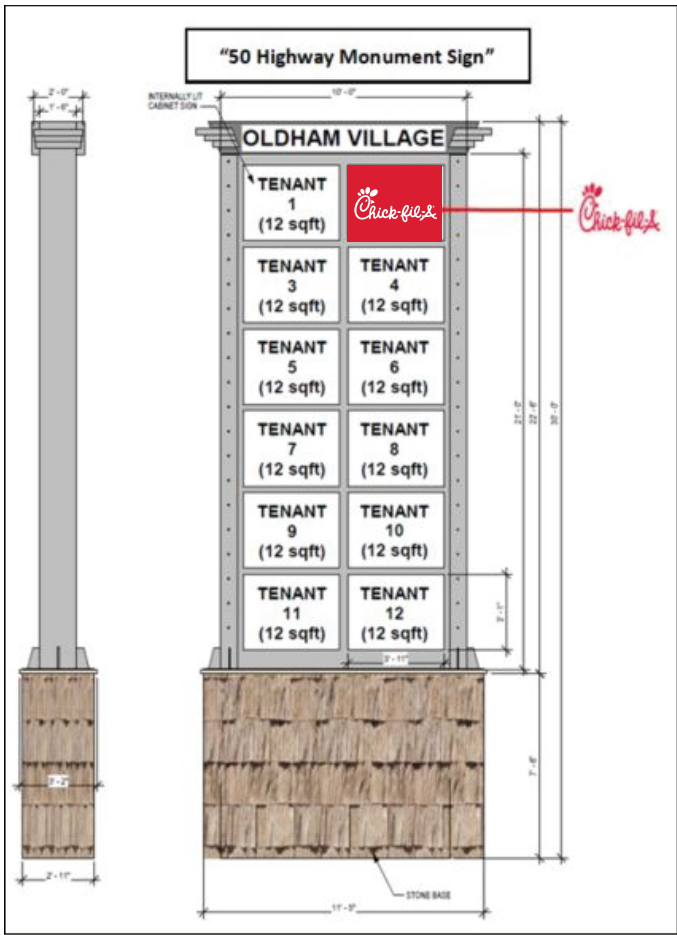
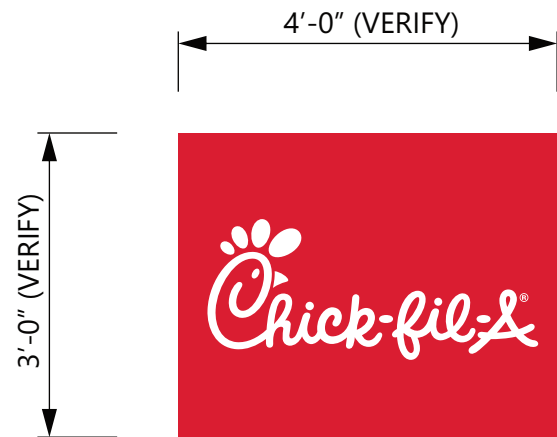
WHITE ACRYLIC FACE DECORATED WITH VINYL FILM
GRAPHICS. FACES TO BE IN SAME POSITION ON BOTH SIDES
OF EXISTING DOUBLE-FACED SIGN.



3M #3630-53 TRANSLUCENT CARDINAL RED



7328 WHITE ACRYLIC



5198 North Lake Drive
Lake City, GA 30260
404.361.3800
www.claytonsigns.com

TENANT SIGNS

DRAWING FILE - CFA - LEE'S SUMMIT, MO (US 50 & SR 291) SIGNAGE.CDR

ALL ELECTRICAL
SIGNS ARE
120 VOLTS
UNLESS
OTHERWISE INDICATED

DRAWN BY Ben Holliday
ACCOUNT REP. Ben Holliday
DRAWING DATE July 27, 2023
REVISION DATE September 11, 2025

STORE NUMBER	STORE ADDRESS
L05248	Chick-fil-A at Lee's Summit, MO (US 50 & SR 291) US Hwy 50 and MO State Route 291 Lee's Summit, MO 64081

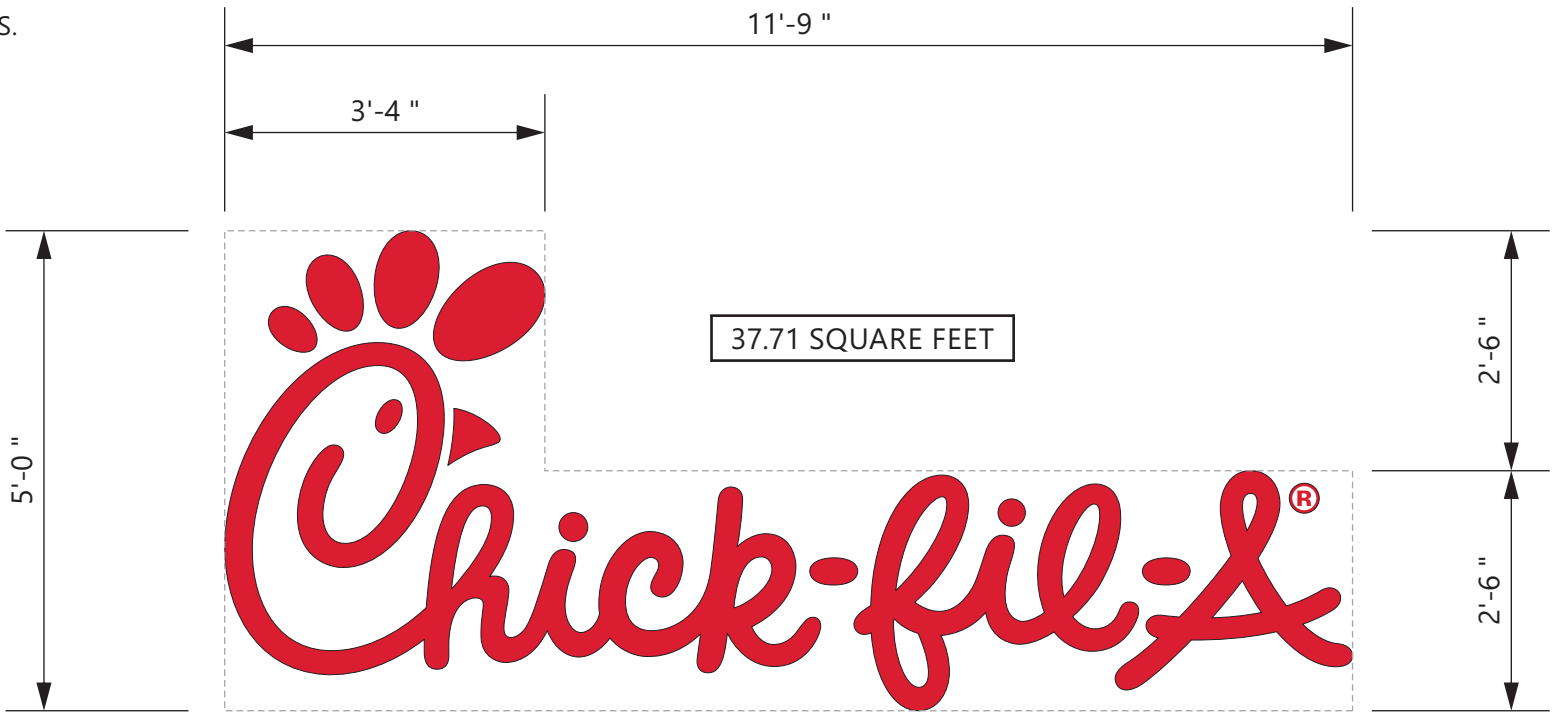
THIS DRAWING IS AN ORIGINAL, UNPUBLISHED DESIGN CREATED BY CLAYTON SIGNS, INC. IT IS NOT TO BE REPRODUCED, CHANGED, OR EXHIBITED TO ANYONE OUTSIDE OF YOUR COMPANY IN WHOLE OR IN PART WITHOUT WRITTEN PERMISSION FROM THE OWNER OF CLAYTON SIGNS, INC. ANY SUCH ACTIONS MAY BE SUBJECT TO LEGAL ACTION IN A COURT OF LAW.
©2023 ALL RIGHTS RESERVED

LOCATION
A2/A3

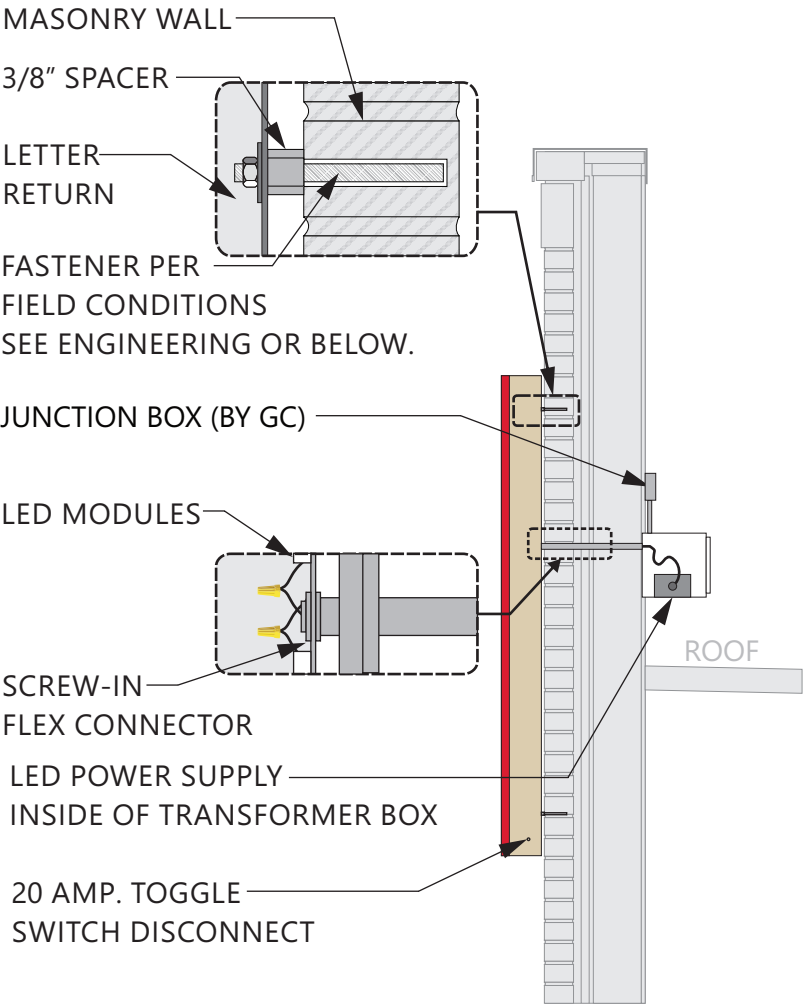
SPECIFICATIONS

CHICK-FIL-A SCRIPT LETTERS
LETTERS ARE LED-ILLUMINATED
CHANNEL LETTERS MOUNTED
ON ALUMINUM SURFACE OF BUILDING
WITH TRANSFORMERS REMOTELY
LOCATED BEHIND THE WALL IN
UL APPROVED TRANSFORMER BOXES.
FACES ARE 3/16" ACRYLIC
RETURNS ARE .063 ALUMINUM
BACKS ARE .080 ALUMINUM
ALL RETURNS ARE ARC-WELDED TO
LETTER BACKS

- CHANNEL LETTER FACES
2793 RED ACRYLIC
TRIMCAP RETAINER-
1" RED JEWELITE TRIMCAP
- ALUMINUM RETURNS
PAINTED TO MATCH
SHERWIN WILLIAMS
SW6108 LATTE



ELEVATION
SCALE - 1/2" = 1'- 0"



FASTENER NOTE:
USE 18-8 STAINLESS STEEL BOLTS W/ SPACERS THRU EIFS.
EXPANSION BOLTS IN CONCRETE OR BRICK WALLS.
TOGGLE BOLTS IN CONCRETE BLOCK OR PANEL WALLS.
TEK SCREWS IN METAL STUDS. LAG-BOLTS IN WOOD STUDS.
ALL THREAD BOLTS WITH BLOCKING BETWEEN STUDS.

CROSS-SECTION
SCALE - 1/2" = 1'- 0"

120 VOLT PRIMARY / 12 VOLT SECONDARY
3 AMPS PER SIGN
PRIMARY WIRING 12 GAUGE WITH 14 GAUGE GROUND
SECONDARY WIRING 18 GAUGE

CHANNEL LETTERS (RED ILLUMINATION)

LED's
JTSL5016R-0.4 RED LED
POWER SUPPLY
BL-120-12-60 POWER SUPPLY

CONNECT THE AC LINE TO THE
BLACK (LINE) AND WHITE
(NEUTRAL) INPUT WIRES OF THE
POWER SUPPLY USING 18-14 AWG
TWIST ON WIRE CONNECTORS.
GROUND POWER SUPPLY GREEN
WIRE TO GROUNDING SCREW.
REPLACE JUNCTION BOX COVER.

WET LOCATION

Green with
yellow stripe
(ground)

White (neutral)

Black (line)

THIS SIGN IS ITENDED TO BE INSTALLED IN ACCORDANCE WITH REQUIREMENTS OF ARTICLE 600 OF THE NATIONAL ELECTRICAL CODE AND/OR APPLICABLE LOCAL CODES. THIS INCLUDES PROPER GROUNDING & BONDING OF THE SIGN.



5198 North Lake Drive
Lake City, GA 30260
404.361.3800
www.claytonsigns.com

LED-ILLUMINATED
CHANNEL LETTERS

DRAWING FILE - CFA - LEE'S SUMMIT, MO (US 50 & SR 291) SIGNAGE.CDR

ALL ELECTRICAL
SIGNS ARE
120 VOLTS
UNLESS
OTHERWISE INDICATED

DRAWN BY Ben Holliday
ACCOUNT REP. Ben Holliday
DRAWING DATE July 27, 2023
REVISION DATE September 11, 2025

STORE NUMBER	STORE ADDRESS
L05248	Chick-fil-A at Lee's Summit, MO (US 50 & SR 291) US Hwy 50 and MO State Route 291 Lee's Summit, MO 64081

THIS DRAWING IS AN ORIGINAL, UNPUBLISHED DESIGN CREATED BY CLAYTON SIGNS, INC. IT IS NOT TO BE REPRODUCED, CHANGED, OR EXHIBITED TO ANYONE OUTSIDE OF YOUR COMPANY IN WHOLE OR IN PART WITHOUT WRITTEN PERMISSION FROM THE OWNER OF CLAYTON SIGNS, INC. ANY SUCH ACTIONS MAY BE SUBJECT TO LEGAL ACTION IN A COURT OF LAW.
©2023 ALL RIGHTS RESERVED

LOCATION
B,C

SPECIFICATIONS

CABINET
ALUMINUM CABINET HAS EXTRUDED ALUMINUM
FACES
FLEX FACES DECORATED WITH TRANSLUCENT VINYL
FILM ON SURFACE OF ACRYLIC.
INTERNALLY ILLUMINATED WITH WHITE LED 6500K LIGHTS.
DISCONNECT SWITCH AS REQUIRED PER NEC.



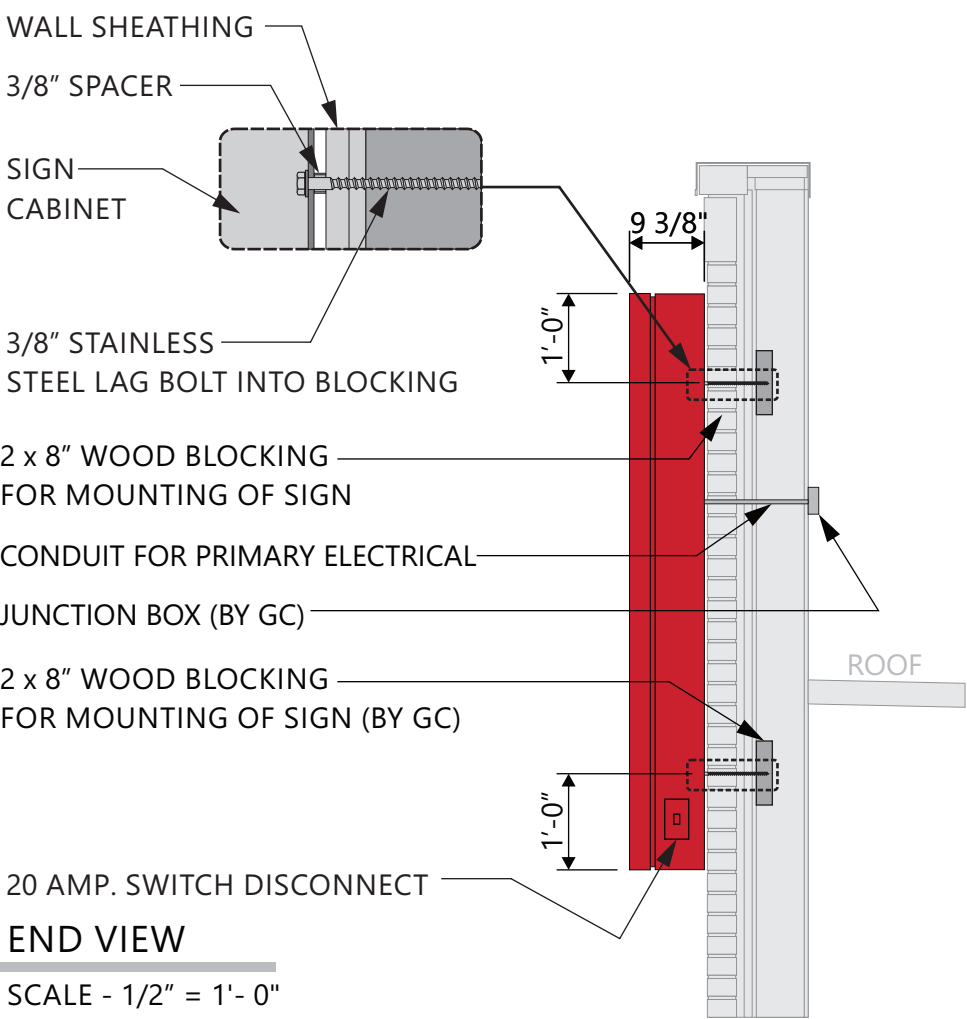
FACES
3M #3630-53 CARDINAL
RED TRANSLUCENT VINYL
CABINET
GENESIS M SINGLE STAGE
(G2-SERIES) RED #48247



3M PANOGRAPHIC III FLEX FACE



ELEVATION
SCALE - 1/2" = 1'- 0"



END VIEW


SCALE - 1/2" = 1'- 0"

FASTENER NOTE:
USE 18-8 STAINLESS STEEL BOLTS W/ SPACERS THRU EIFS.
EXPANSION BOLTS IN CONCRETE OR BRICK WALLS.
TOGGLE BOLTS IN CONCRETE BLOCK OR PANEL WALLS.
TEK SCREWS IN METAL STUDS. LAG-BOLTS IN WOOD STUDS.
ALL THREAD BOLTS WITH BLOCKING BETWEEN STUDS.


CROSS-SECTION

SCALE - 1/2" = 1'- 0"

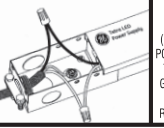
120 VOLT PRIMARY / 12 VOLT SECONDARY
3 AMPS PER SIGN
PRIMARY WIRING 12 GAUGE WITH 14 GAUGE GROUND
SECONDARY WIRING 18 GAUGE



SINGLE FACED CABINET

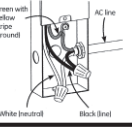


LED's
GEWHSPS3 - 71K - SINGLED SID
POWER SUPPLY
GEPST2 - 12V POWER SUPPLY



CONNECT THE AC LINE TO THE
BLACK (LINE) AND WHITE
(NEUTRAL) INPUT WIRES OF THE
POWER SUPPLY USING 18-14 AWG
TWIST ON WIRE CONNECTORS.
GROUND POWER SUPPLY GREEN
WIRE TO GROUNDING SCREW.
REPLACE JUNCTION BOX COVER.

WET LOCATION



green with
yellow
stripe
(ground)

White (neutral)

Black (line)

AC line

THIS SIGN IS ITENDED TO BE INSTALLED IN ACCORDANCE WITH REQUIREMENTS OF ARTICLE 600 OF THE NATIONAL ELECTRICAL CODE AND/OR APPLICABLE LOCAL CODES. THIS INCLUDES PROPER GROUNDING & BONDING OF THE SIGN.

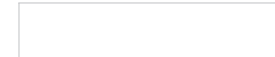
SPECIFICATIONS

ALUMINUM CONSTRUCTION CABINET WITH ROUTED ALUMINUM FACES BACKED WITH ALUMINUM
ALL EXPOSED FASTENERS TO BE PAINTED AND TOUCHED UP WITH SIGN BACKGROUND COLOR

COLORS



MATTHEWS PAINT
EQUUS BRONZE METALLIC
MP20181



MATTHEWS MP32071
SHEEPS WOOL SATIN FINISH

HEIGHT x WIDTH
6.25 SQUARE FEET

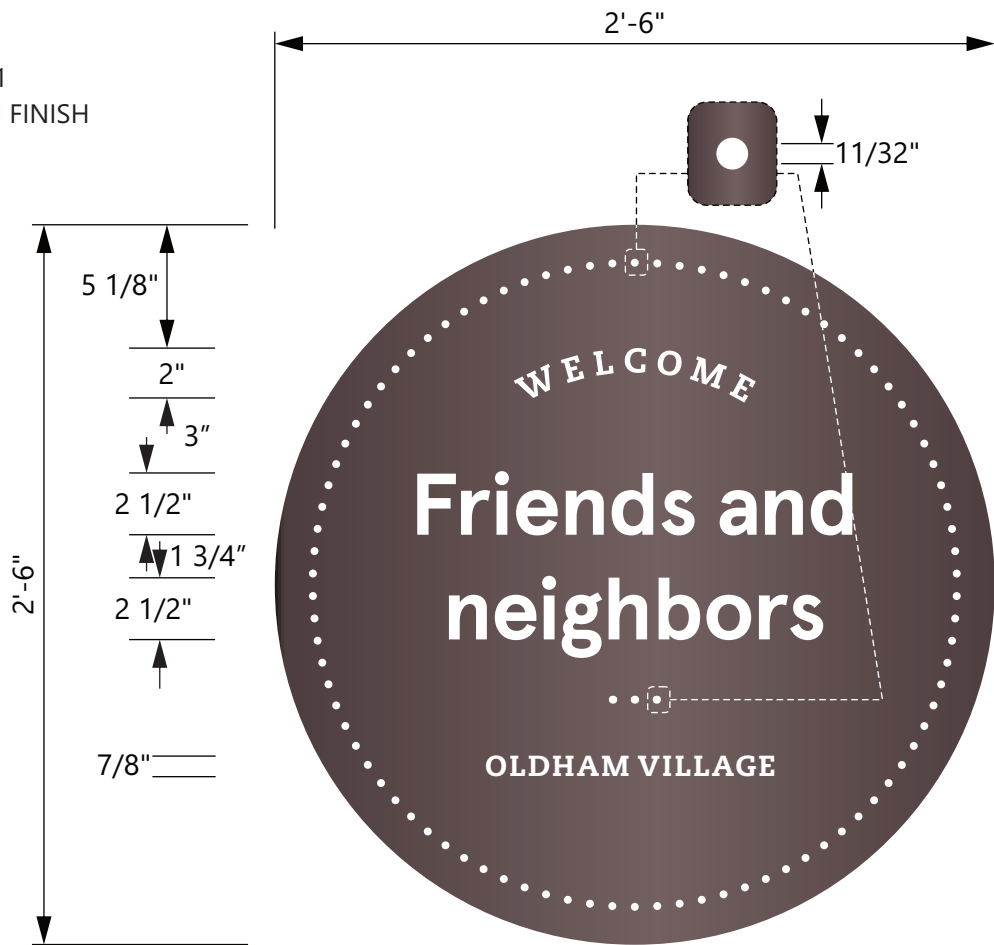
AREA = πr^2
4.91 SQUARE FEET

DOUBLE CHECK STORE NAME
BEFORE FABRICATING THE SIGN

DELIVER SIGN TO OPERATOR.
HE WILL INSTALL THE SIGN INSIDE OF STORE.



ISOMETRIC VIEW
NOT TO SCALE



ELEVATION
SCALE - 1 1/2" = 1'- 0"

FONTS -
APERCU BOLD
CAECILIA COM 85 HEAVY



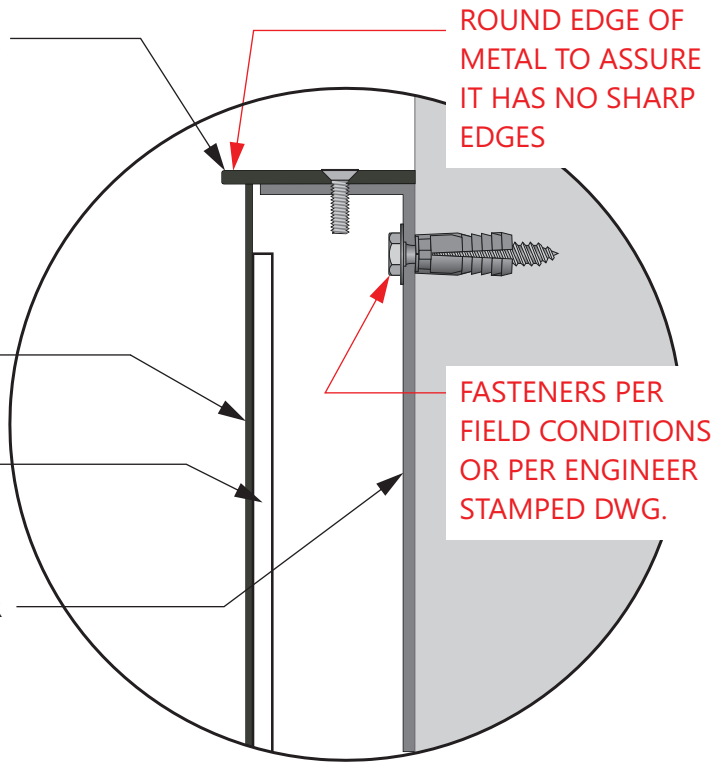
END VIEW
SCALE - 1 1/2" = 1'- 0"

0.125" x 2.5" ALUMINUM RETURN SLIP ROLLED FOR SMOOTH EDGE. PAINTED WITH SATIN FINISH. WELDED TO ALUMINUM FACE. FACE IS INSET TO CREATE 0.375" LIP. SEAMS BETWEEN RETURN AND FACE TO BE FILLED AND GROUND SMOOTH. EXPOSED EDGES SMOOTHED & PAINTED. PRE-DRILLED MOUNTING HOLES AT TOP AND BOTTOM OF RETURN.

.063" ALUMINUM FACE WITH LASER-CUT COPY PAINTED ON BOTH SIDES. SATIN FINISH.

.080" ALUMINUM BACKER PANEL PAINTED WITH SATIN FINISH SECURED TO ALUMINUM FACE WITH 3M468MP-MP200 VHB TAPE.

2" DEEP FABRICATED ALUMINUM RECEIVER BACKER MOUNTED TO WALL WITH SCREWS. CABINET FACE SECURED TO RECEIVER BACKER WITH COUNTER-SUNK SCREWS THROUGH TOP AND BOTTOM.



DETAIL
NOT TO SCALE

ROUND EDGE OF METAL TO ASSURE IT HAS NO SHARP EDGES

FASTENERS PER FIELD CONDITIONS OR PER ENGINEER STAMPED DWG.



5198 North Lake Drive
Lake City, GA 30260
404.361.3800
www.claytonsigns.com

WELCOME WALL SIGN
DIMENSIONAL STAMP

DRAWING FILE - CFA - LEE'S SUMMIT, MO (US 50 & SR 291) SIGNAGE.CDR

ALL ELECTRICAL
SIGNS ARE
120 VOLTS
UNLESS
OTHERWISE INDICATED

DRAWN BY Ben Holliday
ACCOUNT REP. Ben Holliday
DRAWING DATE July 27, 2023
REVISION DATE September 11, 2025

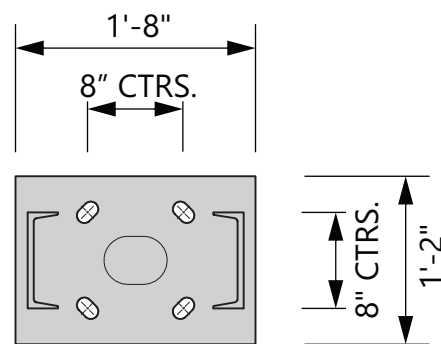
STORE NUMBER	STORE ADDRESS
L05248	Chick-fil-A at Lee's Summit, MO (US 50 & SR 291) US Hwy 50 and MO State Route 291 Lee's Summit, MO 64081

THIS DRAWING IS AN ORIGINAL, UNPUBLISHED DESIGN CREATED BY CLAYTON SIGNS, INC. IT IS NOT TO BE REPRODUCED, CHANGED, OR EXHIBITED TO ANYONE OUTSIDE OF YOUR COMPANY IN WHOLE OR IN PART WITHOUT WRITTEN PERMISSION FROM THE OWNER OF CLAYTON SIGNS, INC. ANY SUCH ACTIONS MAY BE SUBJECT TO LEGAL ACTION IN A COURT OF LAW.
©2023 ALL RIGHTS RESERVED

LOCATION
F

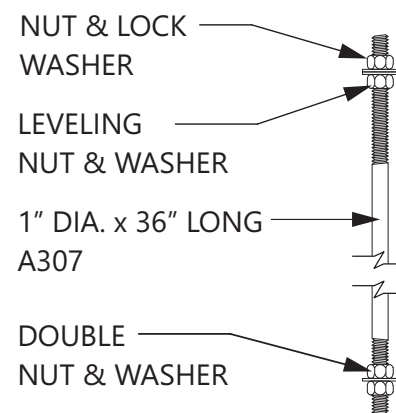
MENU BOARDS FURNISHED
BY COATES GROUP AND
INSTALLED BY HONOR BUILT
MENU BOARD COLUMN AND FRAMING
FURNISHED AND INSTALLED BY
PATTISON SIGN GROUP
ANCHOR CAGES AND FOOTINGS
FURNISHED AND INSTALLED BY
CLAYTON SIGNS

This block contains two color swatches. The top swatch is a solid dark brown color, labeled 'CHICK-FIL-A DARK BRONZE'. The bottom swatch is a solid white color, labeled 'WHITE REFLECTIVE VINYL FILM'.

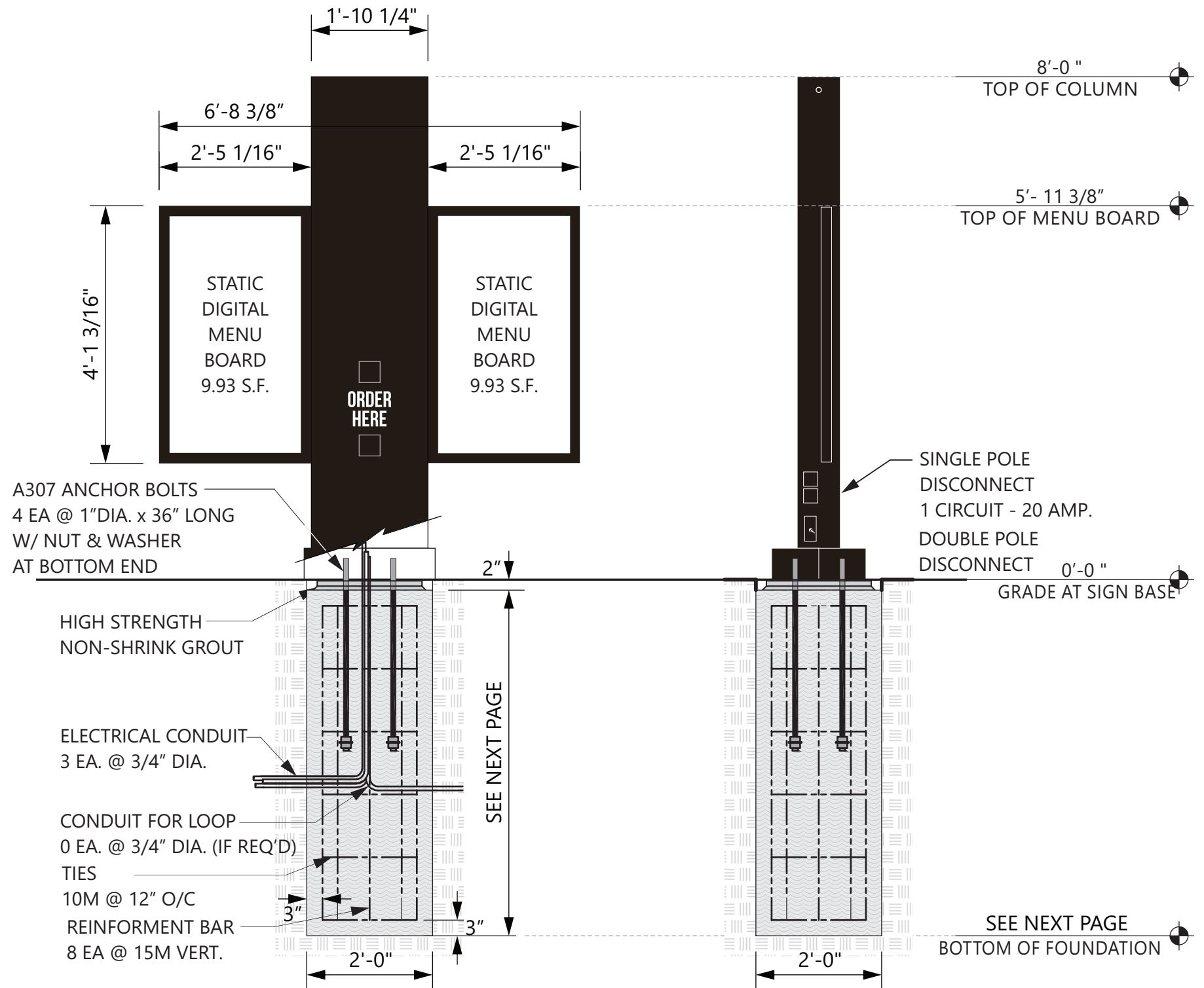


BASE PLATE DETAIL

SCALE - 3/4" = 1'- 0"



ANCHOR BOLT - QTY. 4
NOT TO SCALE



ELEVATION

SCALE - 1/2" = 1' - 0"

END VIEW

SCALE - 1/2" = 1' - 0"



5198 North Lake Drive
Lake City, GA 30260
404.361.3800
www.claytonsigns.com

STATIC DIGITAL DRIVE-THRU MENU BOARDS

DRAWING FILE - CFA - LEE'S SUMMIT, MO (US 50 & SR 291) SIGNAGE.CDR

ALL ELECTRICAL
SIGNS ARE
120 VOLTS
UNLESS
OTHERWISE INDICATED

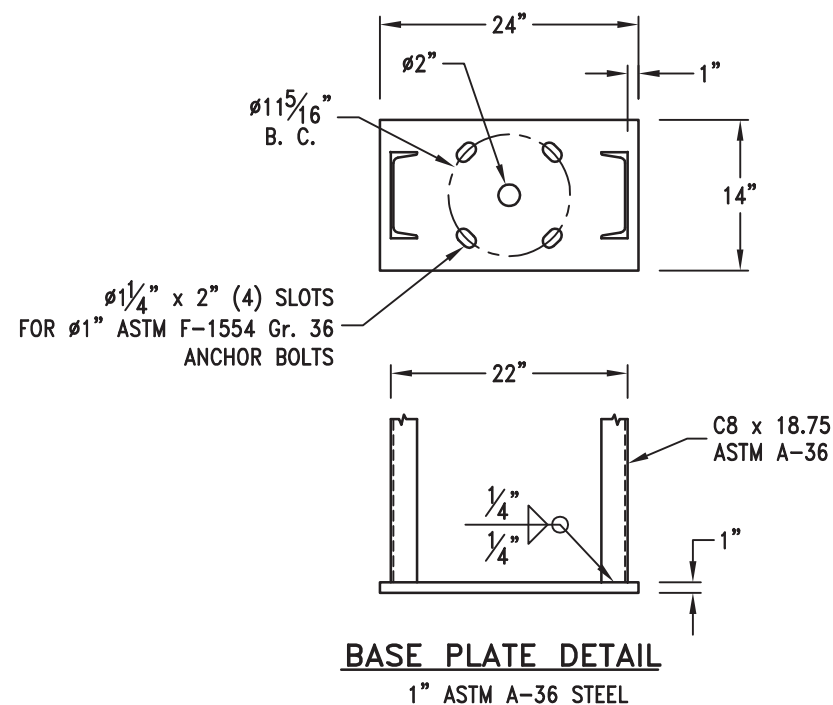
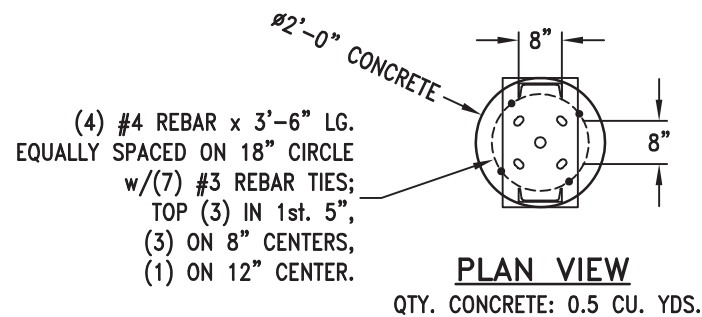
DRAWN BY	Ben Holliday
ACCOUNT REP.	Ben Holliday
DRAWING DATE	July 27, 2023
REVISION DATE	September 11, 2025

STORE NUMBER	STORE ADDRESS
L05248	Chick-fil-A at Lee's Summit, MO (US 50 & US Hwy 50 and MO State Route 291 Lee's Summit, MO 64081

THIS DRAWING IS AN ORIGINAL, UNPUBLISHED DESIGN CREATED BY CLAYTON SIGNS, INC. IT IS NOT TO BE REPRODUCED, CHANGED, OR EXHIBITED TO ANYONE OUTSIDE OF YOUR COMPANY IN WHOLE OR IN PART WITHOUT WRITTEN PERMISSION FROM THE OWNER OF CLAYTON SIGNS, INC.. ANY SUCH ACTIONS MAY BE SUBJECT TO LEGAL ACTION IN A COURT OF LAW.

©2023 ALL RIGHTS RESERVED

LOCATION
H1/H2

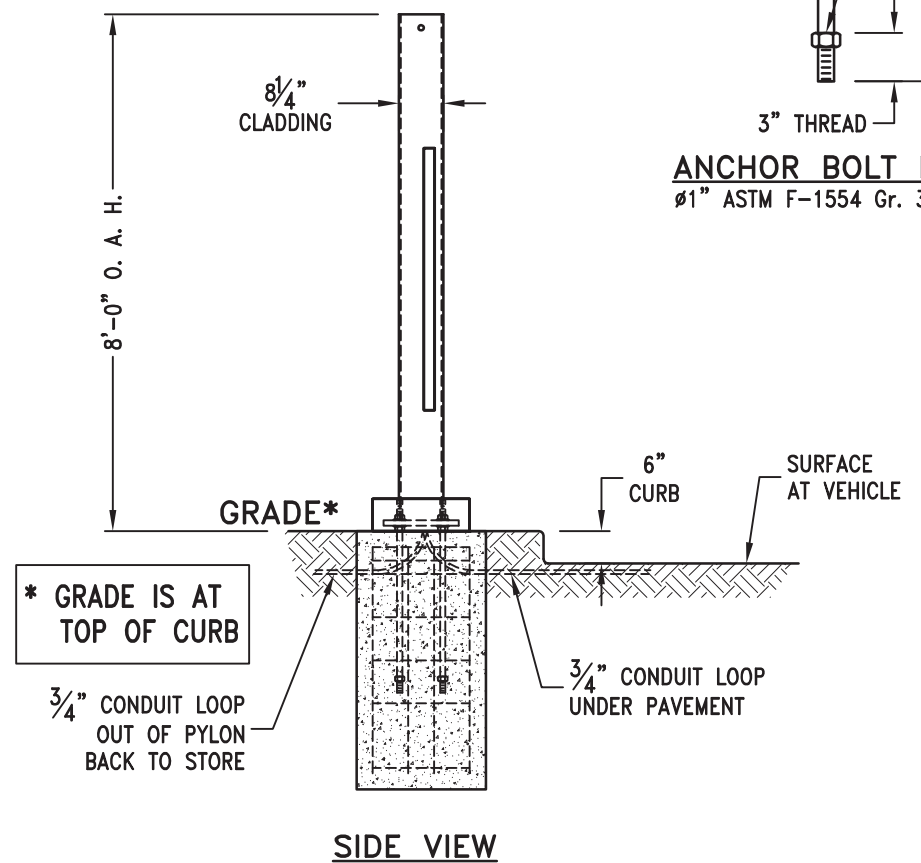
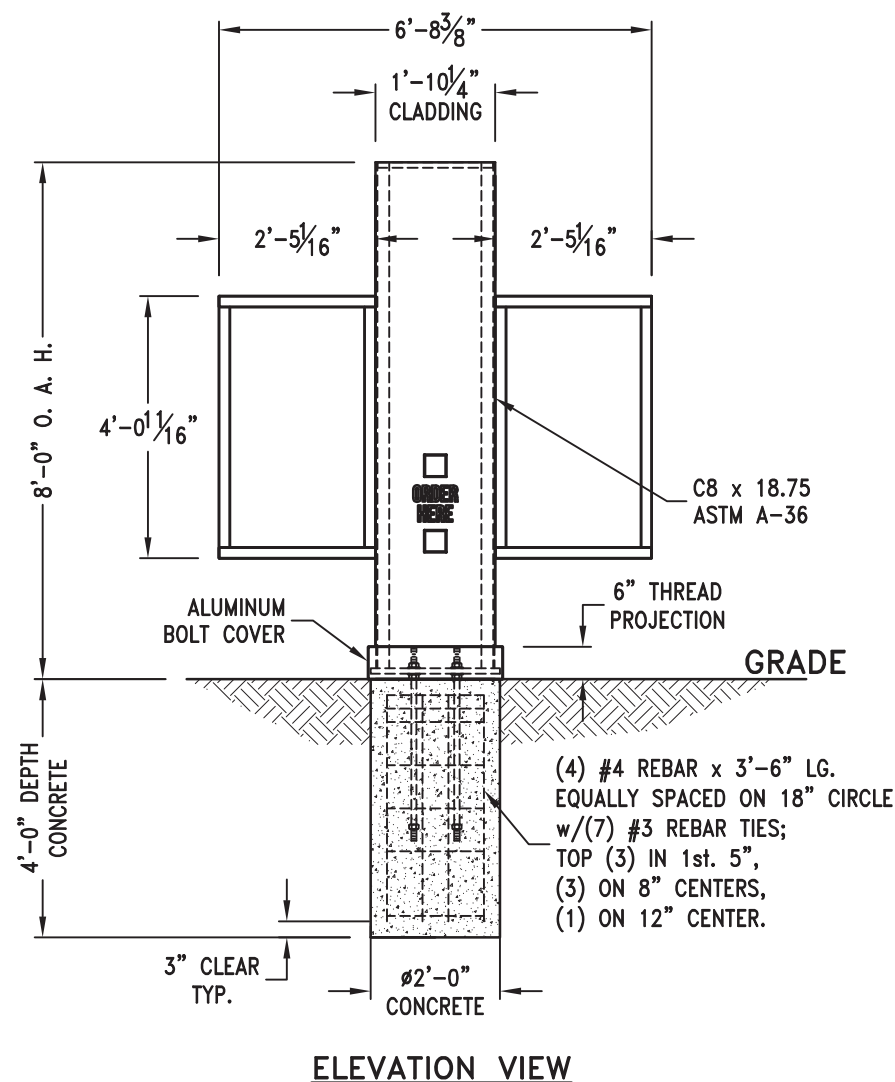


FOUNDATION DESIGN NOTES:

- Concrete shall have a minimum compressive strength of 3000 PSI at 28 days.
- Reinforcing steel shall be ASTM A-615 Gr. 60.
- Caisson footing designed using a soil bearing force of 150 PSF per foot Lateral. If this soil condition does not exist, it is the Erector's responsibility to have a new footing designed for the existing soil conditions by a Licensed Engineer.
- Anchor bolts shall be ASTM F-1554 Gr. 36 steel.

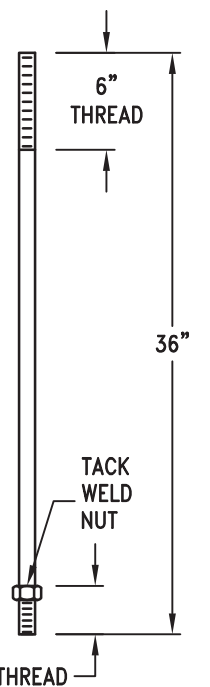
DESIGN WIND LOAD:

Based on the 2015 International Building Code (ASCE 7-10) using Risk Category II, Exposure C and 115 mph wind speed.



ANCHOR BOLT DETAIL

Ø1" ASTM F-1554 Gr. 36 STEEL



5198 North Lake Drive
Lake City, GA 30260
404.361.3800
www.claytonsigns.com

STATIC DIGITAL DRIVE-THRU MENU BOARDS

DRAWING FILE - CFA - LEE'S SUMMIT, MO (US 50 & SR 291) SIGNAGE.CDR

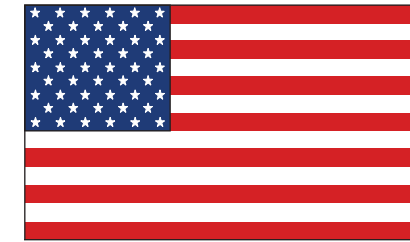
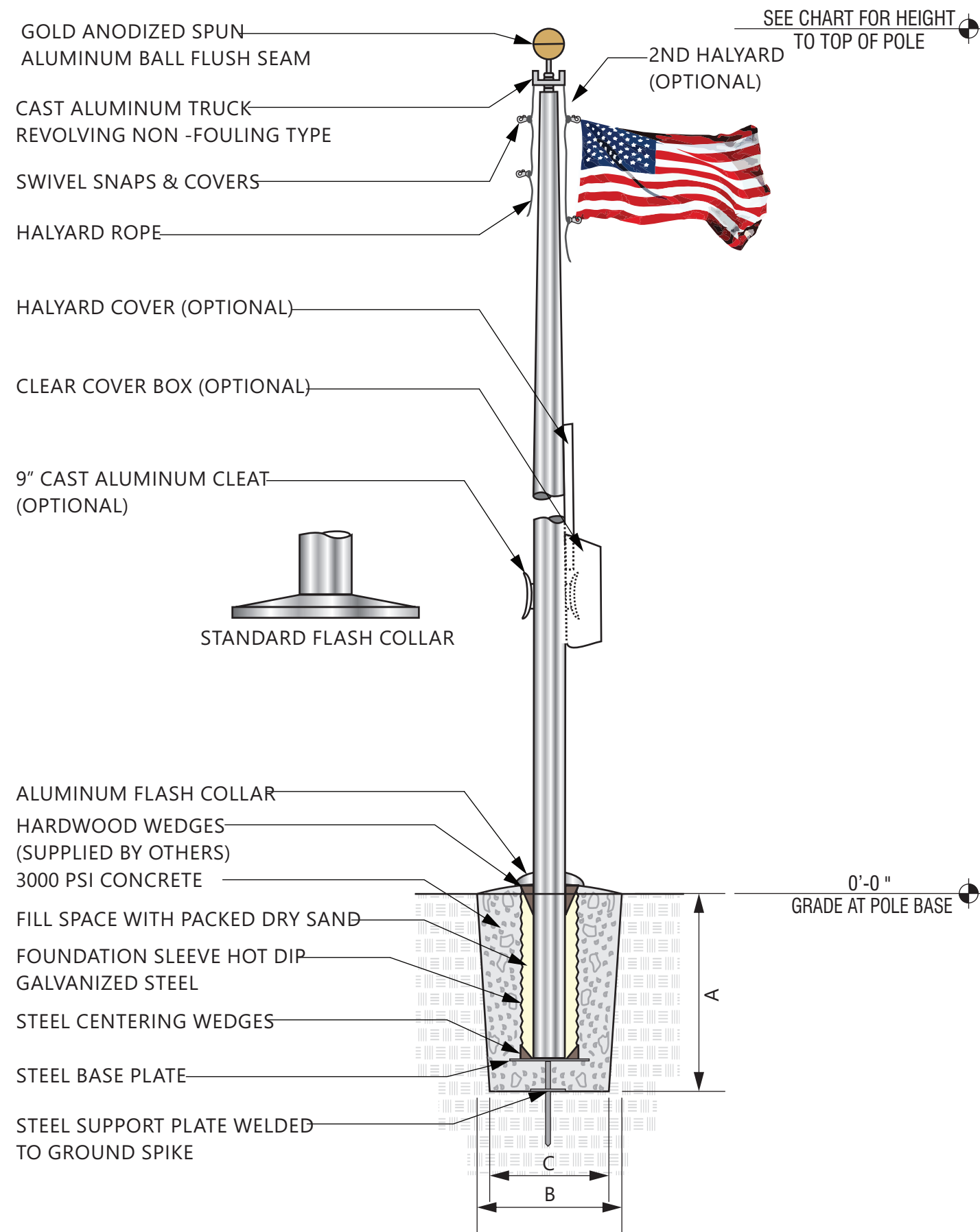
ALL ELECTRICAL
SIGNS ARE
120 VOLTS
UNLESS
OTHERWISE INDICATED

DRAWN BY Ben Holliday
ACCOUNT REP. Ben Holliday
DRAWING DATE July 27, 2023
REVISION DATE September 11, 2025

STORE NUMBER	STORE ADDRESS
L05248	Chick-fil-A at Lee's Summit, MO (US 50 & SR 291) US Hwy 50 and MO State Route 291 Lee's Summit, MO 64081

THIS DRAWING IS AN ORIGINAL, UNPUBLISHED DESIGN CREATED BY CLAYTON SIGNS, INC. IT IS NOT TO BE REPRODUCED, CHANGED, OR EXHIBITED TO ANYONE OUTSIDE OF YOUR COMPANY IN WHOLE OR IN PART WITHOUT WRITTEN PERMISSION FROM THE OWNER OF CLAYTON SIGNS, INC. ANY SUCH ACTIONS MAY BE SUBJECT TO LEGAL ACTION IN A COURT OF LAW.
©2023 ALL RIGHTS RESERVED

LOCATION
H1/H2



FLAG SIZES

POLE	A	B	MATERIAL
20'	3'0"	5'0"	POLYESTHER
25'	4'0"	6'0"	POLYESTHER
30'	5'0"	8'0"	POLYESTHER
35'	6'0"	10'0"	POLYESTHER
40'	8'0"	12'0"	POLYESTHER
45'	8'0"	12'0"	POLYESTHER
50'	12'0"	18'0"	POLYESTHER

FOUNDATION SIZES

HEIGHT	A	B	C
20'	3'6"	30"	24"
25'	3'6"	30"	24"
30'	3'6"	30"	24"
35'	4'0"	36"	30"
40'	4'6"	42"	36"
45'	5'0"	48"	42"
50'	5'6"	48"	42"

GROUND SLEEVE AND CONCRETE INSTALLED
BY THE GENERAL CONTRACTOR
POLE INSTALLED ON PRE-INSTALLED GROUND
SLEEVE BY SIGN CONTRACTOR



5198 North Lake Drive
Lake City, GA 30260
404.361.3800
www.claytonsigns.com

FLAG POLE

DRAWING FILE - CFA - LEE'S SUMMIT, MO (US 50 & SR 291) SIGNAGE.CDR

ALL ELECTRICAL
SIGNS ARE
120 VOLTS
UNLESS
OTHERWISE INDICATED

DRAWN BY Ben Holliday
ACCOUNT REP. Ben Holliday
DRAWING DATE July 27, 2023
REVISION DATE September 11, 2025

STORE NUMBER	STORE ADDRESS
L05248	Chick-fil-A at Lee's Summit, MO (US 50 & SR 291) US Hwy 50 and MO State Route 291 Lee's Summit, MO 64081

THIS DRAWING IS AN ORIGINAL, UNPUBLISHED DESIGN CREATED BY CLAYTON SIGNS, INC. IT IS NOT TO BE REPRODUCED, CHANGED, OR EXHIBITED TO ANYONE OUTSIDE OF YOUR COMPANY IN WHOLE OR IN PART WITHOUT WRITTEN PERMISSION FROM THE OWNER OF CLAYTON SIGNS, INC. ANY SUCH ACTIONS MAY BE SUBJECT TO LEGAL ACTION IN A COURT OF LAW.
©2023 ALL RIGHTS RESERVED

LOCATION
FP

SPECIFICATIONS

CLEARANCE BAR

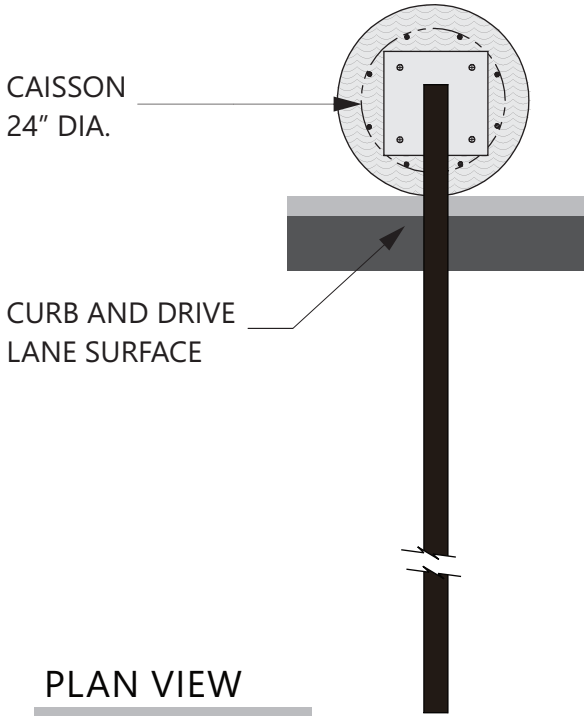
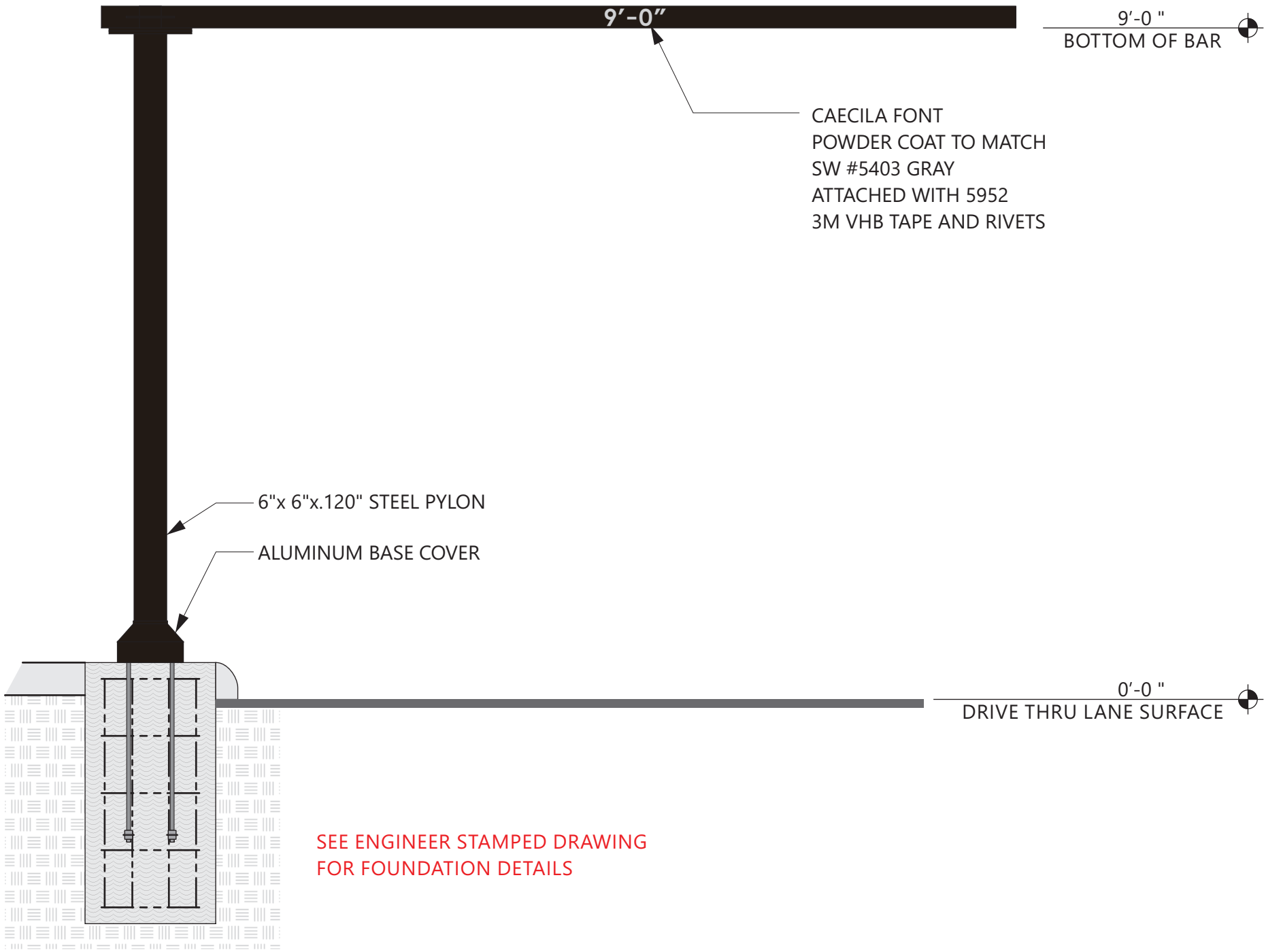
COLORS



MATTE BLACK TEXTURED



SHERWIN WILLIAMS
SW 5403 GRAY



PLAN VIEW

SCALE - 1/2" = 1'- 0"



5198 North Lake Drive
Lake City, GA 30260
404.361.3800
www.claytonsigns.com

DRIVE-THRU
CLEARANCE BAR

DRAWING FILE - CFA - LEE'S SUMMIT, MO (US 50 & SR 291) SIGNAGE.CDR

ALL ELECTRICAL
SIGNS ARE
120 VOLTS
UNLESS
OTHERWISE INDICATED

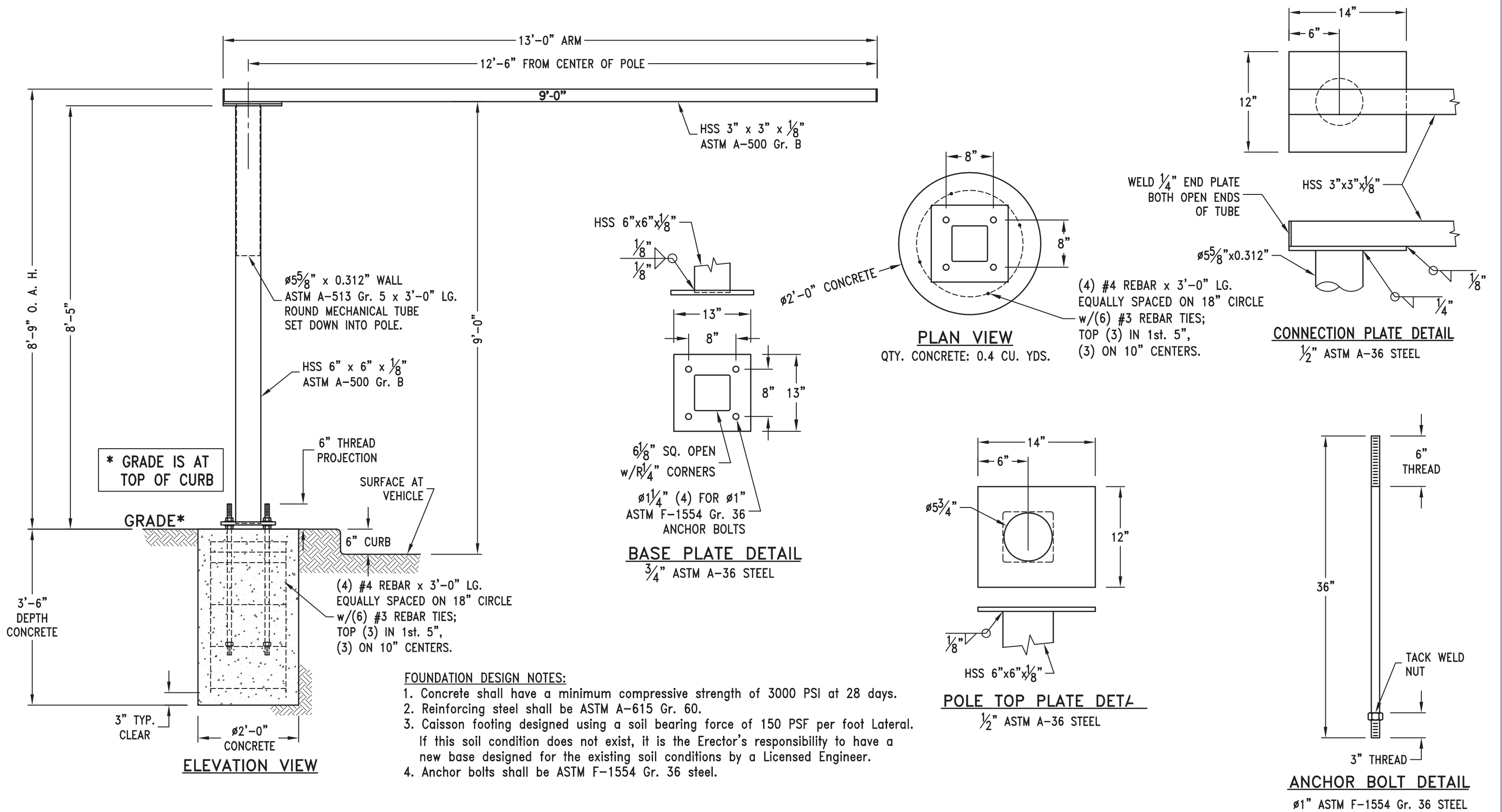
DRAWN BY Ben Holliday
ACCOUNT REP. Ben Holliday
DRAWING DATE July 27, 2023
REVISION DATE September 11, 2025

STORE NUMBER	STORE ADDRESS
L05248	Chick-fil-A at Lee's Summit, MO (US 50 & SR 291) US Hwy 50 and MO State Route 291 Lee's Summit, MO 64081

THIS DRAWING IS AN ORIGINAL, UNPUBLISHED DESIGN CREATED BY CLAYTON SIGNS, INC. IT IS NOT TO BE REPRODUCED, CHANGED, OR EXHIBITED TO ANYONE OUTSIDE OF YOUR COMPANY IN WHOLE OR IN PART WITHOUT WRITTEN PERMISSION FROM THE OWNER OF CLAYTON SIGNS, INC. ANY SUCH ACTIONS MAY BE SUBJECT TO LEGAL ACTION IN A COURT OF LAW.
©2023 ALL RIGHTS RESERVED

LOCATION

CB-1



5198 North Lake Drive
Lake City, GA 30260
404.361.3800
www.claytonsigns.com

DRIVE-THRU CLEARANCE BAR

DRAWING FILE - CFA - LEE'S SUMMIT, MO (US 50 & SR 291) SIGNAGE.CDR

ALL ELECTRICAL
SIGNS ARE
120 VOLTS
UNLESS
OTHERWISE INDICATED

DRAWN BY Ben Holliday
ACCOUNT REP. Ben Holliday
DRAWING DATE July 27, 2023
REVISION DATE September 11, 2025

STORE NUMBER	STORE ADDRESS
L05248	Chick-fil-A at Lee's Summit, MO (US 50 & SR 291) US Hwy 50 and MO State Route 291 Lee's Summit, MO 64081

THIS DRAWING IS AN ORIGINAL, UNPUBLISHED DESIGN CREATED BY CLAYTON SIGNS, INC. IT IS NOT TO BE REPRODUCED, CHANGED, OR EXHIBITED TO ANYONE OUTSIDE OF YOUR COMPANY IN WHOLE OR IN PART WITHOUT WRITTEN PERMISSION FROM THE OWNER OF CLAYTON SIGNS, INC. ANY SUCH ACTIONS MAY BE SUBJECT TO LEGAL ACTION IN A COURT OF LAW.
©2023 ALL RIGHTS RESERVED

LOCATION
CB-1