

Main building

North Elevation (4,108.3 sq ft)

Sign 1- Waterway Channel letters w/logo (83.71 sq ft)

South Elevation (4,108.3 sq ft)

Sign 1- Waterway Channel letters w/logo (83.71 sq ft)

Sign 6- Logo and Waterway Channel letters (203.87 sq ft)

West Elevation (1,600 sq ft)

Sign 2 - Logo & waterway Channel letters (74.38 Sq ft)

Sign 3 - (2 signs) - Enter (2.51 sq ft) each

Sign 5- Informational (2.6 sq ft)

East Elevation (1,600 sq ft)

Sign 4- (2 signs) Exit (2.51 sq ft) each

Canopy

West Elevation (150.5 sq ft)

Sign 21- go, fast, go clea, go happy (25.47 sq ft)

Sign 23- (4) Cash Card Clearance hanging signs

Fuel Canopy

North Elevation (200 sq ft)

Sign 17- Logo (7.8 sq ft)

Sign 19- Waterway Fuels (27.27 sq ft)

South Elevation (200 sq ft)

Sign 17- Logo (7.8 sq ft)

Sign 19- Waterway Fuels (27.27 sq ft)

West Elevation (57.5 sq ft)

Sign 17- Logo (7.8 sq ft)

East Elevation (57.5 sq ft)

Sign 17- Logo (7.8 sq ft)

Under fuel Canopy

North Elevation

Sign 10- Numbers 1-6

South Elevation

Sign 18- Informational (4.5 sq ft)

Detached Signs

Northeast Elevation

Sign 15- Directional (25.6 sq ft)

Northwest Elevation

Sign 16- Dircetional (14 sq ft)

Southwest Elevation

Sign 13- Dircetional (14 sq ft)

Sign 22- Monument (31.33 sq ft) OAH 5'

Type text here

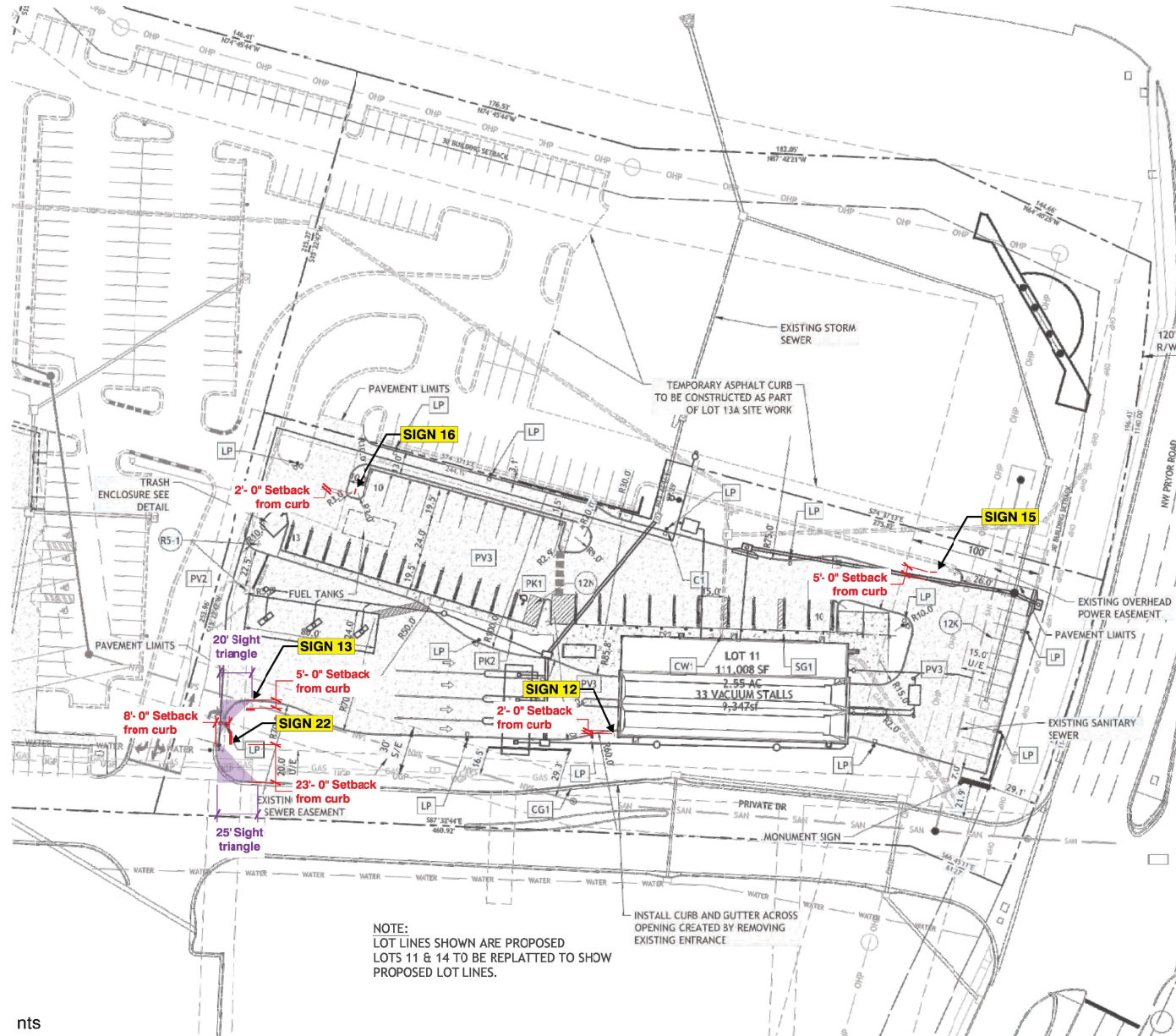


247334-1-8

1000 NW Pryor Road
Lee's Summit, MO 64081

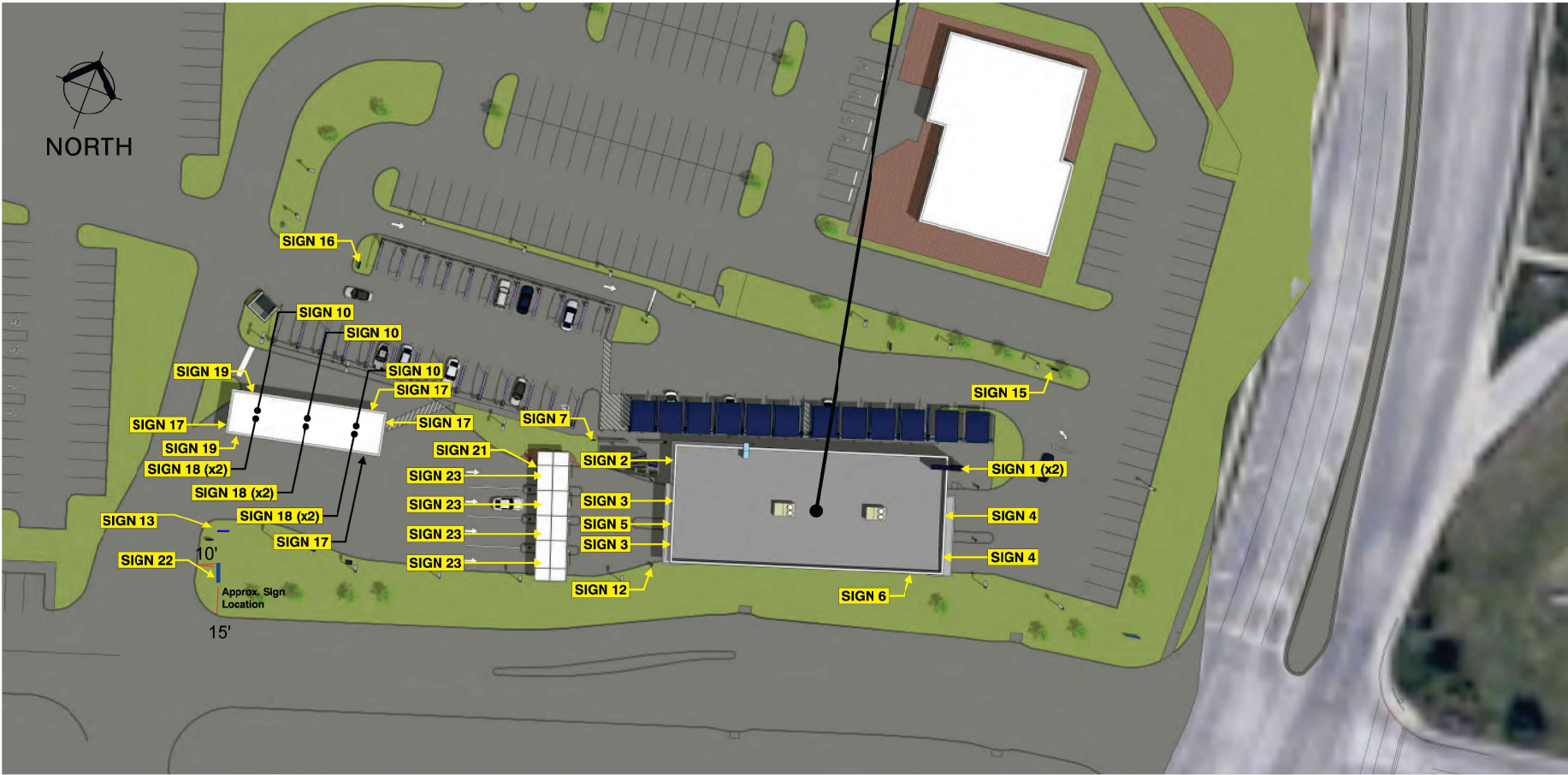
Revisions	
GED 6.27.25	GED 8.21.25
GED 6.30.25	GED 8.28.25
GED 8.12.25	
GED 8.18.25	
GED 8.21.25	





nts

Sales:	Lisa Koebel
PM:	Angela Wilson
Art:	GED 8.28.25
Drwg #:	247334-1-B



Sales:	Lisa Koebel
PM:	Angela Wilson
Art:	GED 8.21.25
Drwg #:	247334-1-8



*NOTE: THERE ARE TWO (2) INSTALLS - ONE ON EACH SIDE OF PYLON WALL

Refer to site plan for Ground signs that shows setbacks.

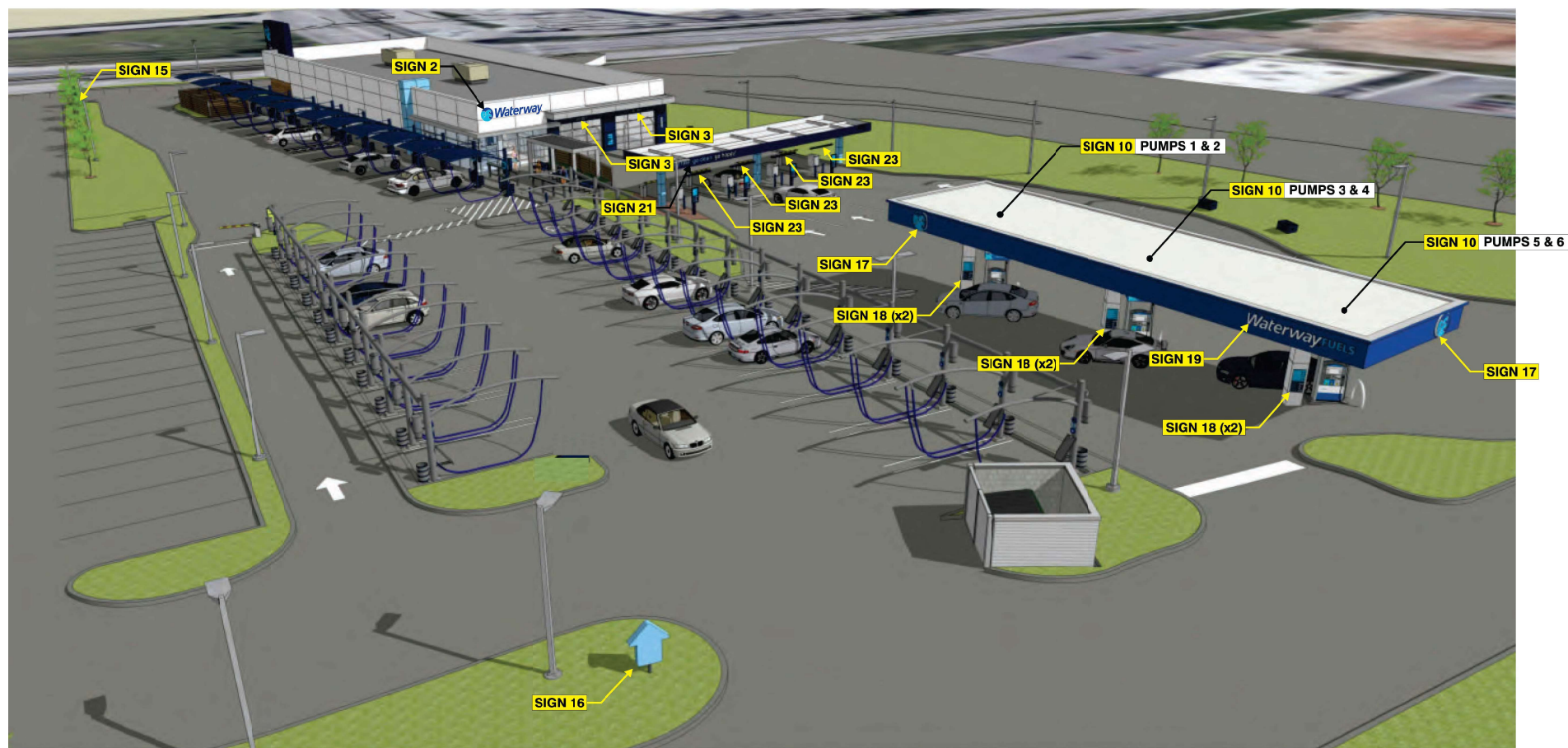
Sales:	Lisa Koebel
PM:	Angela Wilson
Art:	GED 8.21.25
Drwg #:	247334-1-8



***NOTE: THERE ARE TWO (2) INSTALLS - ONE ON EACH SIDE OF PYLON WALL**

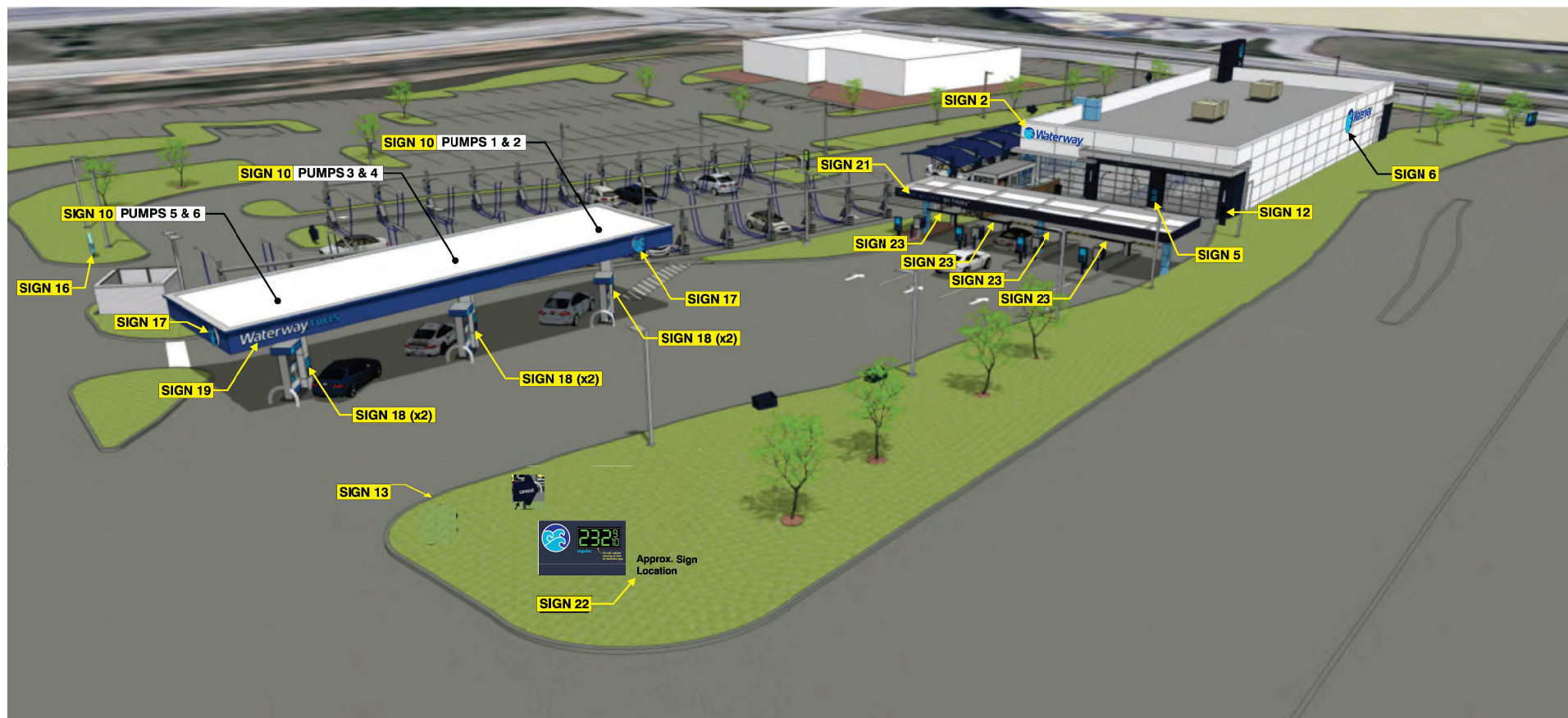
Refer to site plan for Ground signs that shows setbacks.

Sales:	Lisa Koebel
PM:	Angela Wilson
Art:	GED 8.21.25
Drwg #:	247334-1-8



Refer to site plan for Ground signs that shows setbacks.

Sales:	Lisa Koebel
PM:	Angela Wilson
Art:	GED 8.21.25
Drwg #:	247334-1-8



Refer to site plan for Ground signs that shows setbacks.

Sales:	Lisa Koebel
PM:	Angela Wilson
Art:	GED 8.18.25
Drwg #:	247334-1-8



Sales:	Lisa Koebel
PM:	Angela Wilson
Art:	GED 8.18.25
Drwg #:	247334-1-8



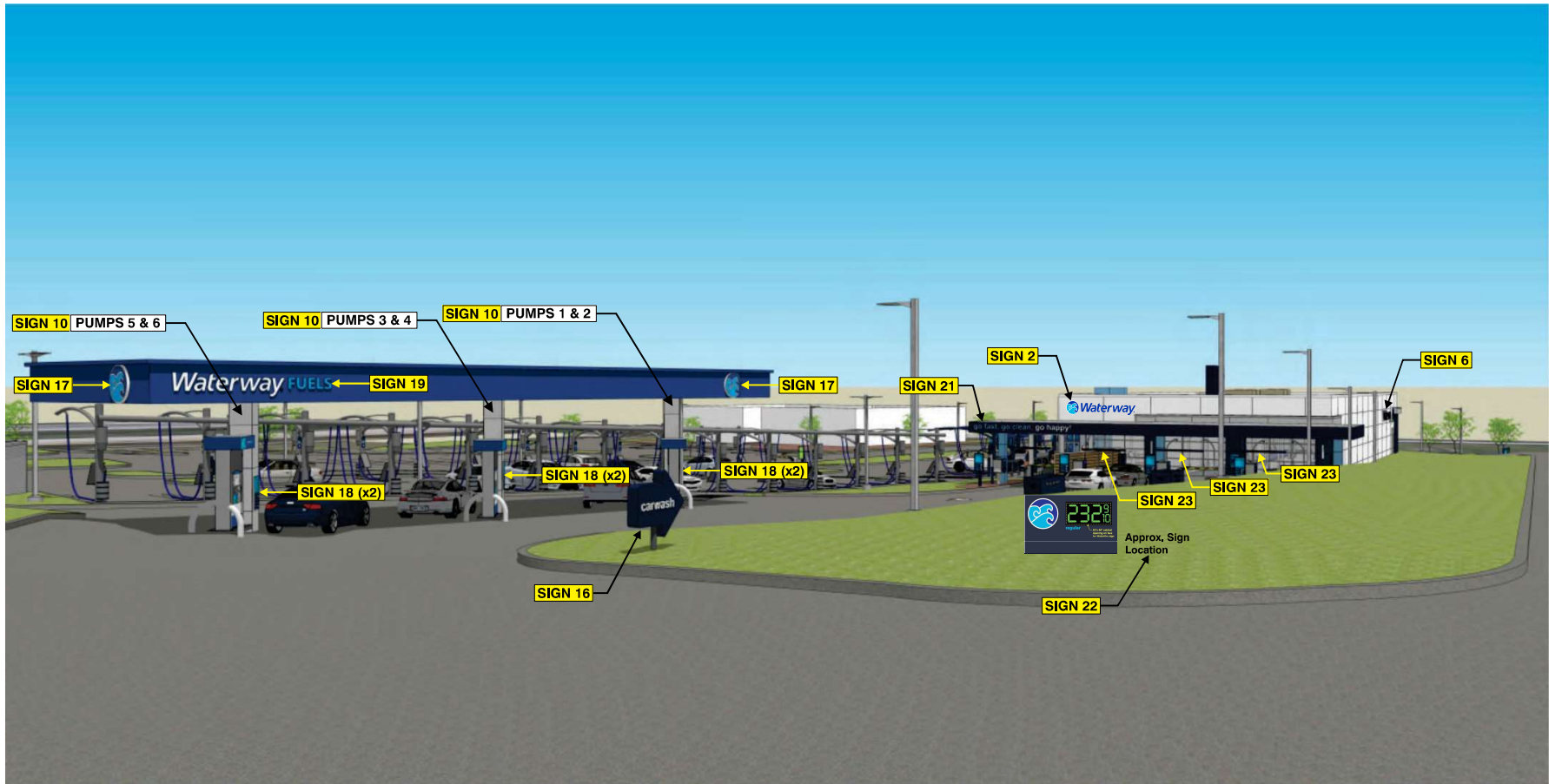
*NOTE: THERE ARE TWO (2) INSTALLS - ONE ON EACH SIDE OF PYLON WALL

Sales:	Lisa Koebel
PM:	Angela Wilson
Art:	GED 8.21.25
Drwg #:	247334-1-8



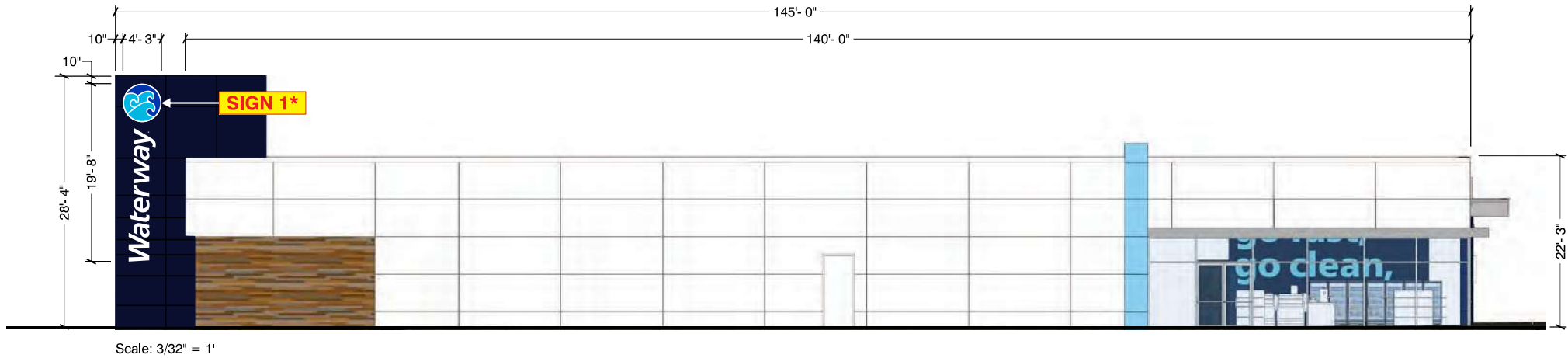
*NOTE: THERE ARE TWO (2) INSTALLS - ONE ON EACH SIDE OF PYLON WALL

Sales:	Lisa Koebel
PM:	Angela Wilson
Art:	GED 8.21.25
Drwg #:	247334-1-8



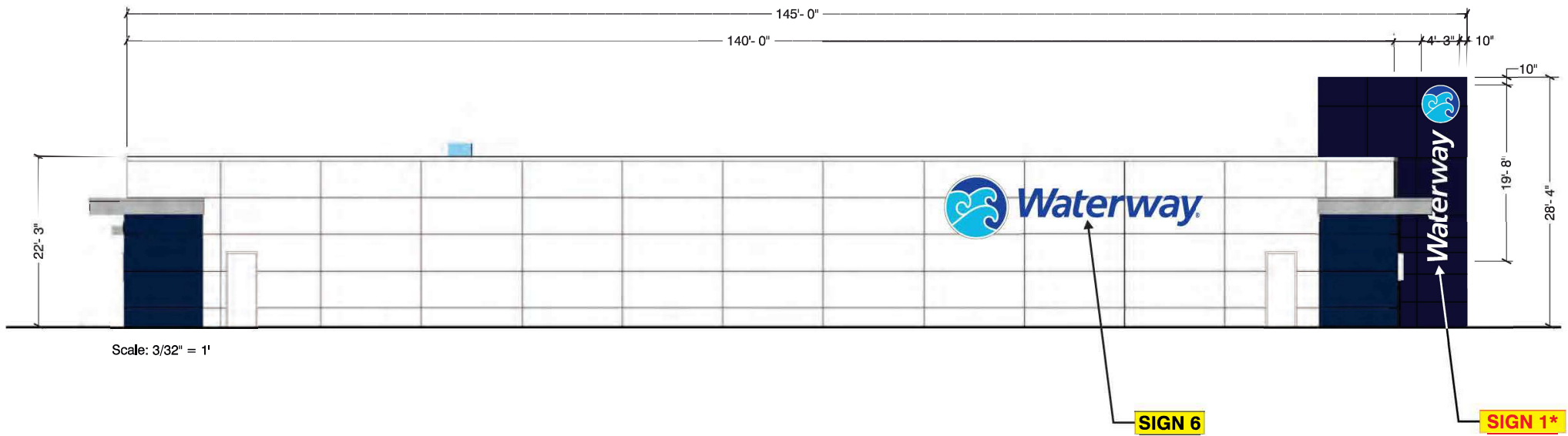
Refer to site plan for Ground signs that shows setbacks.

Sales:	Lisa Koebel
PM:	Angela Wilson
Art:	GED 8.18.25
Drwg #:	247334-1-8



*NOTE: THERE ARE TWO (2) INSTALLS - ONE ON EACH SIDE OF PYLON WALL

Sales:	Lisa Koebel
PM:	Angela Wilson
Art:	GED 8.28.25
Drwg #:	247334-1-8

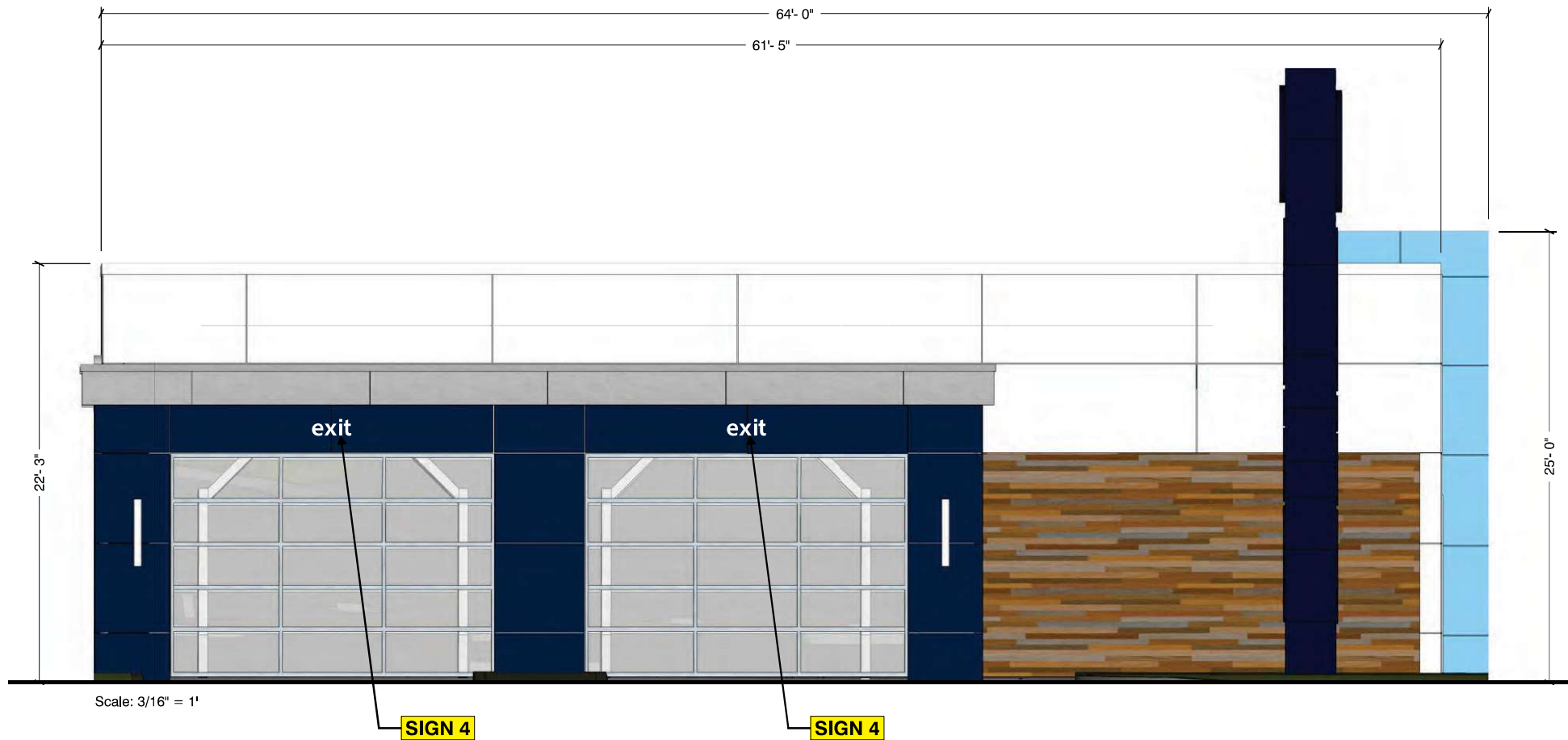


***NOTE: THERE ARE TWO (2) INSTALLS - ONE ON EACH SIDE OF PYLON WALL**

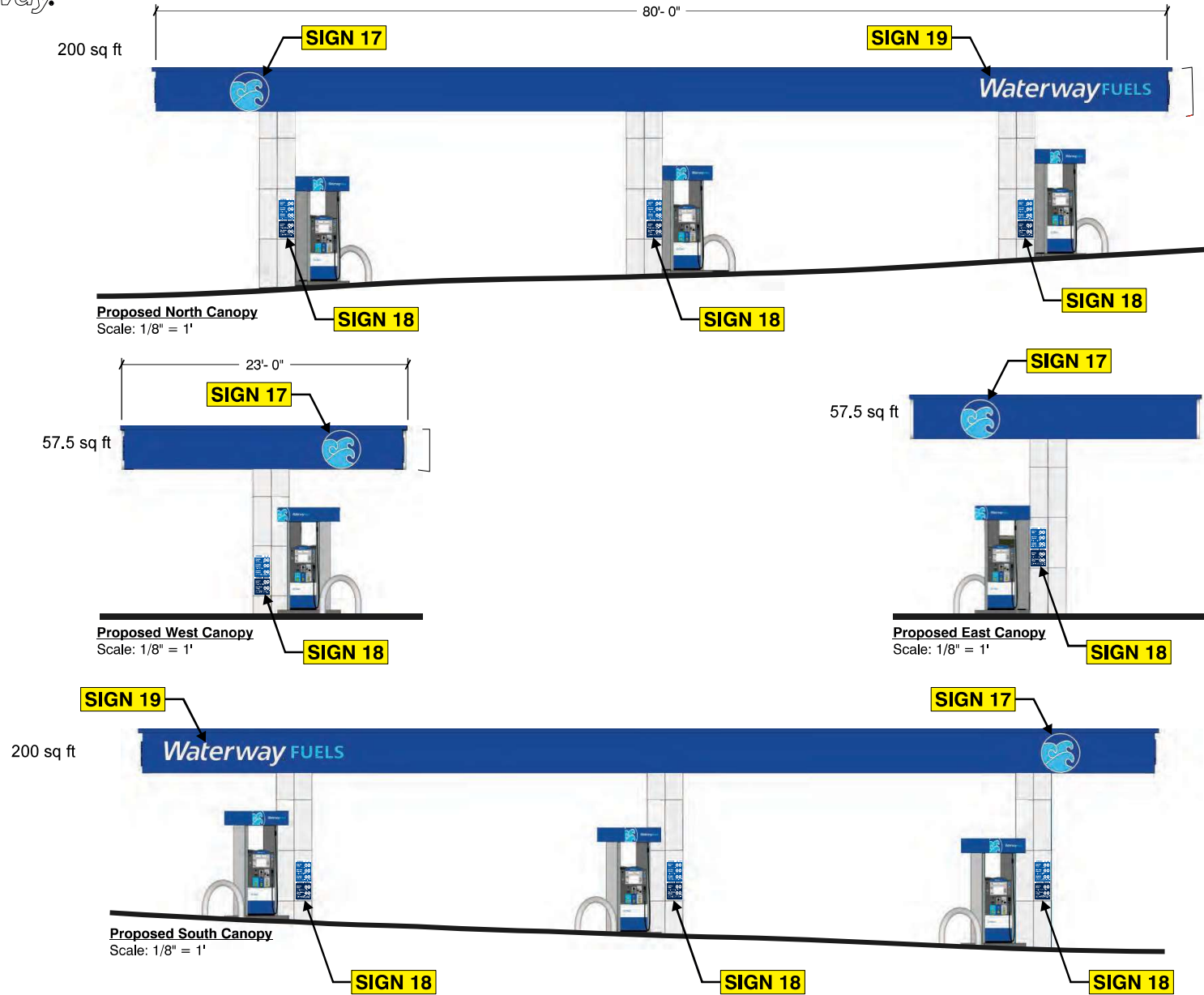
Sales:	Lisa Koebel
PM:	Angela Wilson
Art:	GED 8.28.25
Drwg #:	247334-1-8



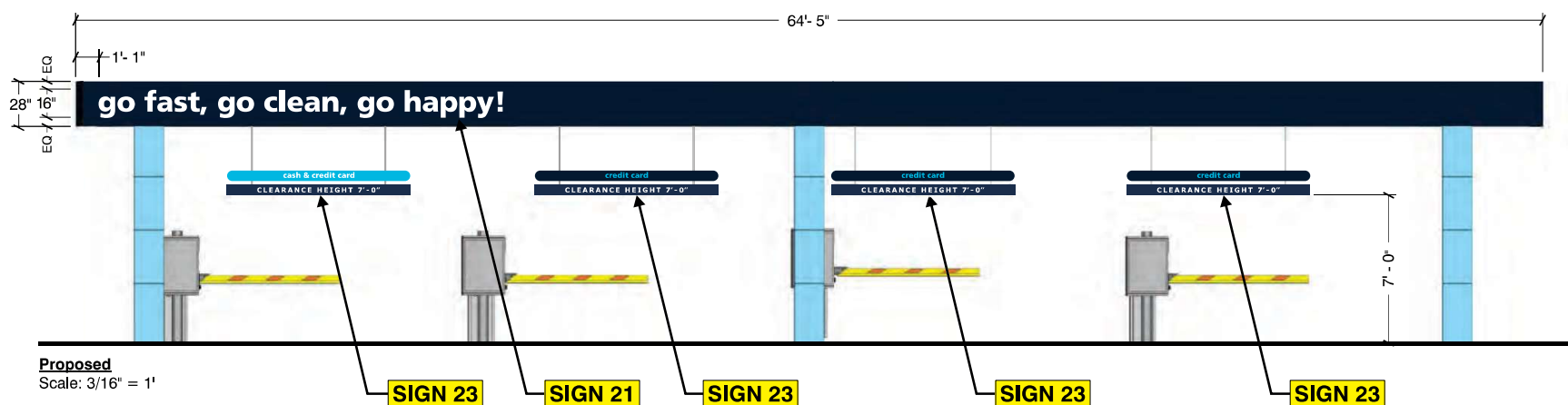
Sales:	Lisa Koebel
PM:	Angela Wilson
Art:	GED 8.28.25
Drwg #:	247334-1-B



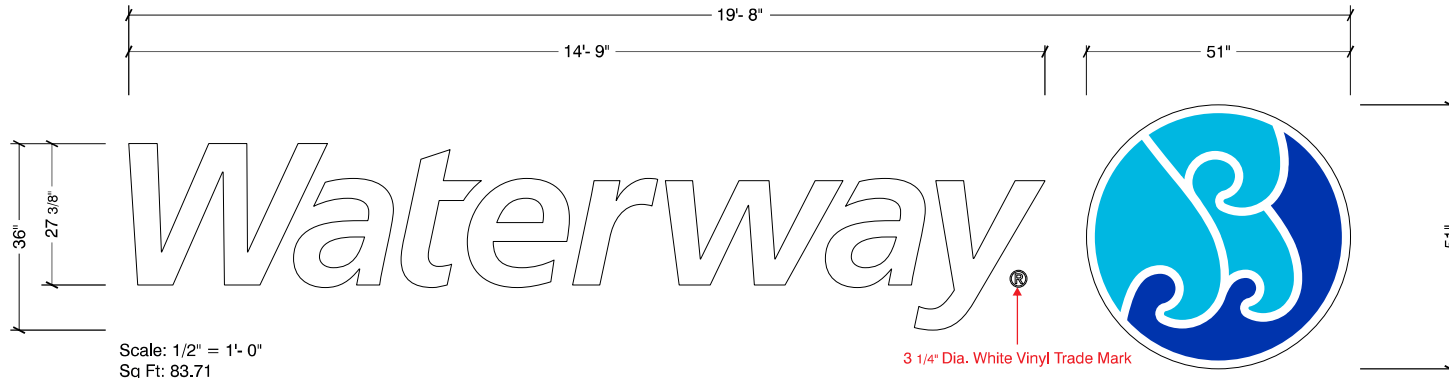
Sales:	Lisa Koebel
PM:	Angela Wilson
Art:	GED 8.28.25
Drwg #:	247334-1-8



Sales:	Lisa Koebel
PM:	Angela Wilson
Art:	GED 8.28.25
Drwg #:	247334-1-B



Sales:	Lisa Koebel
PM:	Angela Wilson
Art:	GED 8,28,25
Drwg #:	247334-1-8

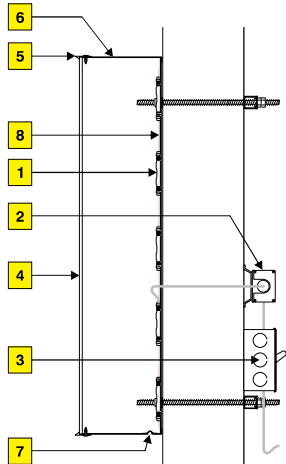


Center mark on top of logo to be added during manufacturing for mounting purposes.



Copy & logo shown rotated 90° counterclockwise (parallel to the ground)

----- Grade
Installed sign orientation



Illumination

- 1 White LEDs.
- 2 Remote power supplies.
- 3 Logo & letters to have UL Listed disconnect switches.

Faces

- 4 #7328 white acrylic. Colors to match white, PMS 306 C (vinyl: Oracal 8500 Light Blue) & PMS 286 C (vinyl: Avery A6574-T Ultra Marine Cast 800 Blue, Applied first surface.
- 5 Logo & letters to have 1" white Jewelite trim cap.

Returns

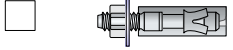
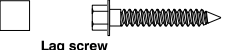



- 6 3" x .040 Aluminum painted dark blue painted Benjamin Moore Old Navy 2063-10.
- 7 1/4" weep holes. Holes to be located on left sides of letters & logo at the lowest point of the rotated letter to prevent water pooling).*

Backs





- 8 White aluminum or ACM.

*Note:
When rotated, the letter 'y' has two descending strokes each requiring weep holes.

Mounting

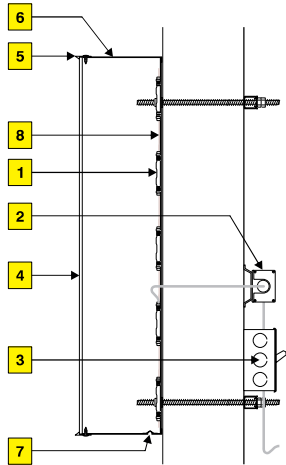
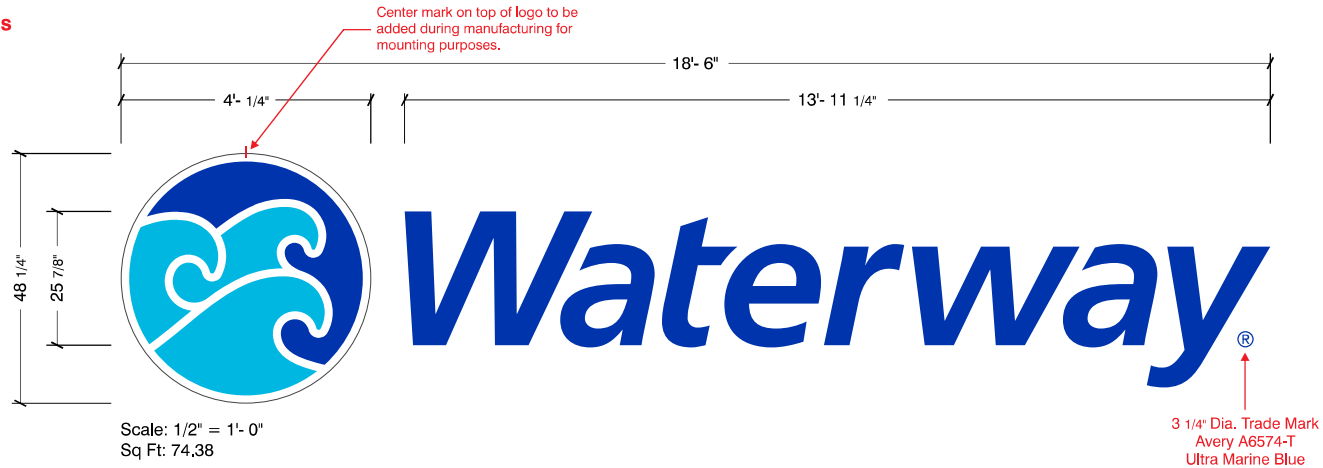
 <p>Wedge anchors For use in masonry applications.</p>	 <p>Lag screw Wood lags for solid wood backing. Concrete lags for solid masonry applications. Only when specified by NAS.</p>
 <p>Thru-Bolt w/ (Preferred) Hollow walls w/ rear access. Backing- U-Channel, angle iron or wood.</p>	 <p>Toggle bolt For use in hollow walls w/ suitable wall materials.</p>
 <p>Stud mounted</p>	

Colors to match

	PMS 306 C (Vinyl) Oracal 8500 Light Blue		PMS 286 C (Vinyl) Avery A6574-T Ultra Marine Cast 800 Blue
	White		Benjamin Moore Old Navy 2063-10



Sales:	Lisa Koebel
PM:	Angela Wilson
Art:	GED 5.7.25
Drwg #:	247334-1-8


Illumination

- 1** White LEDs.
- 2** Remote power supplies.
- 3** Logo & letters to have UL Listed disconnect switches.

Faces

- 4** #7328 white acrylic. Colors to match white, PMS 306 C (vinyl: Oracal 8500 Light Blue) & PMS 286 C (vinyl: Avery A6574-T Ultra Marine Cast 800 Blue, Applied first surface.
- 5** Logo & letters to have 1" white Jewelite trim cap.

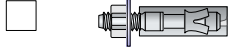
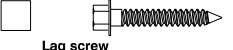

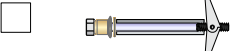

Returns

- 6** Logo & letters: 3" x .040 Aluminum painted white.
- 7** 1/4" weep holes required.

Backs

- 8** White aluminum or ACM.

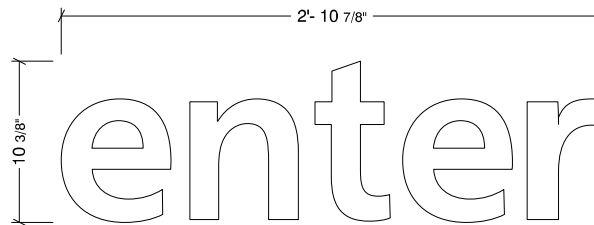
Mounting

 <p>Wedge anchors For use in masonry applications.</p>	 <p>Lag screw Wood lags for solid wood backing. Concrete lags for solid masonry applications. Only when specified by NAS.</p>
 <p>Thru-Bolt w/ (Preferred) Hollow walls w/ rear access. Backing- U-Channel, angle iron or wood.</p>	 <p>Toggle bolt For use in hollow walls w/ suitable wall materials.</p>
 <p>Stud mounted</p>	

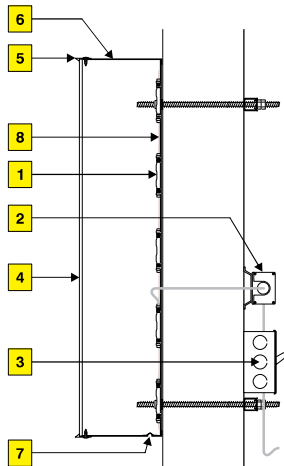
Colors to match

	PMS 306 C (Vinyl) Oracal 8500 Light Blue		PMS 286 C (Vinyl) Avery A6574-T Ultra Marine Cast 800 Blue
	White		

Sales:	Lisa Koebel
PM:	Angela Wilson
Art:	GED 8.18.25
Drwg #:	247334-1-B



Scale: 1 1/2" = 1'- 0"
Sq Ft: 2.51



Illumination

- | | |
|---|---|
| 1 | White LEDs. |
| 2 | Remote power supplies. |
| 3 | Logo & letters to have UL Listed disconnect switches. |

Faces

- | | |
|---|-------------------------------|
| 4 | #7328 White acrylic. |
| 5 | 1" White Jewel-Lite trim cap. |

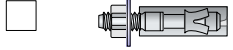
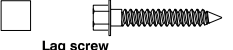

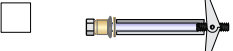

Returns

- | | |
|---|--|
| 6 | 3" x .040 Pre-painted Benjamin Moore Old Navy 2063-10. |
| 7 | 1/4" Weep holes required. |

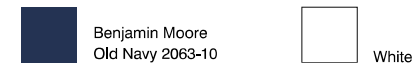
Backs

- | | |
|---|------------------------|
| 8 | White aluminum or ACM. |
|---|------------------------|

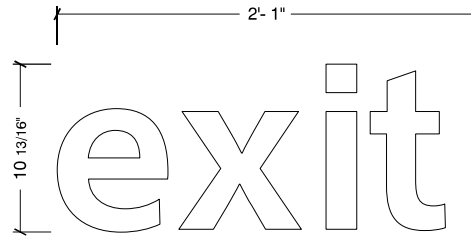
Mounting

 Wedge anchors For use in masonry applications.	 Lag screw Wood lags for solid wood backing. Concrete lags for solid masonry applications. Only when specified by NAS.
 Thru-Bolt w/ (Preferred) Hollow walls w/ rear access. Backing- U-Channel, angle iron or wood.	 Toggle bolt For use in hollow walls w/ suitable wall materials.
 Stud mounted	

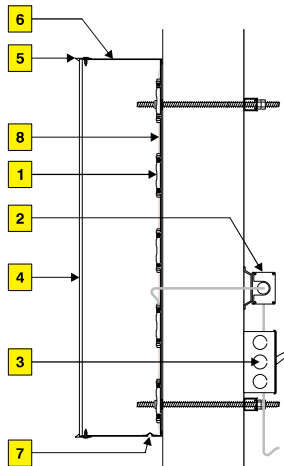
Colors to match



Sales:	Lisa Koebel
PM:	Angela Wilson
Art:	GED 8.18.25
Drwg #:	247334-1-B



Scale: 1 1/2" = 1'-0"
Sq Ft: 1.88



Illumination

1	White LEDs.
2	Remote power supplies.
3	Logo & letters to have UL Listed disconnect switches.

Faces

4	#7328 White acrylic.
5	1" White Jewel-Lite trim cap.

Returns

6	3" x .040 Pre-painted Benjamin Moore Old Navy 2063-10.
7	1/4" Weep holes required.

Backs

8	White aluminum or ACM.
---	------------------------

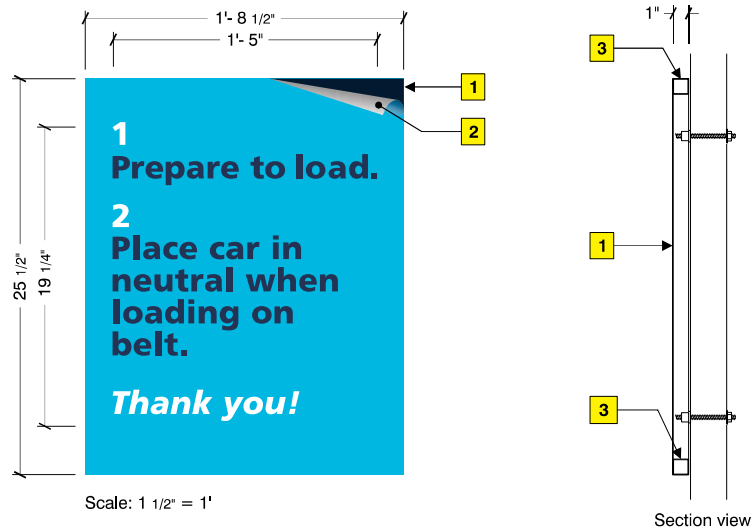
Mounting

 Wedge anchors For use in masonry applications.	 Lag screw Wood lags for solid wood backing. Concrete lags for solid masonry applications. Only when specified by NAS.
 Thru-Bolt w/ (Preferred) Hollow walls w/ rear access. Backing- U-Channel, angle iron or wood.	 Toggle bolt For use in hollow walls w/ suitable wall materials.
 Stud mounted	

Colors to match

	Benjamin Moore Old Navy 2063-10		White
--	------------------------------------	--	-------

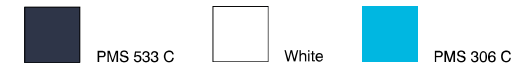
Sales:	Lisa Koebel
PM:	Angela Wilson
Art:	GED 8.18.25
Drwg #:	247334-1-B


Face

- 1** 16 gauge cold rolled steel painted Benjamin Moore 2063-10.
- 2** Digitally printed magnetic overlay applied first surface.

Frame

- 3** 1" x 11 Guage square steel tube w/ nut inserts for mounting painted Benjamin Moore 2063-10.

Digital print colors

Face & frame colors


*Customer to provide final graphic to use for manufacturing.
Subject to sizing & color changes.

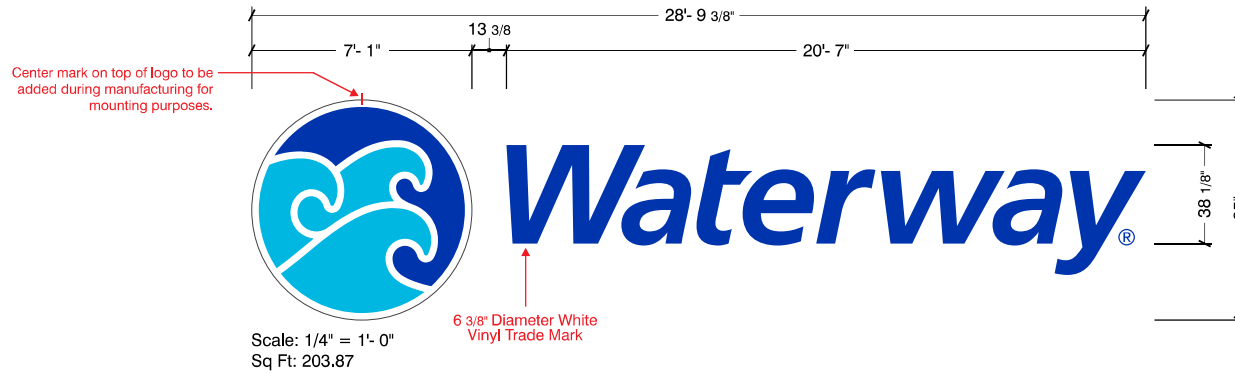
Sales:	Lisa Koebel
PM:	Angela Wilson
Art:	GED 8.21.25
Drwg #:	247334-1-8



Refer to page 12 for elevations

SIGN 6 Sign specifications: **One (1) set of Customer owned 85" RM face-lit channel letters***

Lee's Summit, MO

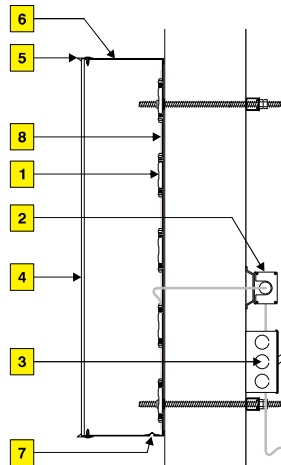


***Manufacturing notes:**

Use the existing customer owned 85" Waterway sign in stock.

Manufacture replacement faces for the Waterway letters w/ Avery A6474-T Ultra Marine Cast 800 Blue vinyl applied first surface.

Original mounting pattern for logo was for a vertical format. Production to update mounting pattern for a linear logo format.



Illumination

- 1 White LEDs.
- 2 Remote power supplies.
- 3 Logo & letters to have UL Listed disconnect switches.

Faces

- 4 #7328 White acrylic. Colors to match white, PMS 306 C (vinyl: Oracal 8500 Light Blue) & PMS 286 C (vinyl: Avery A6574-T Ultra Marine Cast 800 Blue. Applied first surface.
- 5 Logo & letters to have 1" white Jewel-Lite trim cap.

Returns

- 6 Logo & letters: 3" x .040 aluminum painted white.
- 7 1/4" Weep holes required.

Backs

- 8 White aluminum or ACM.

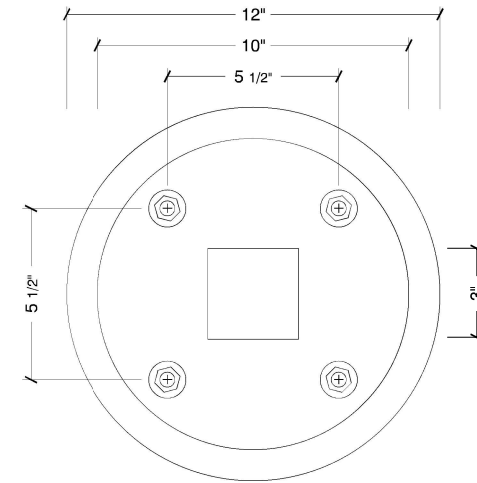
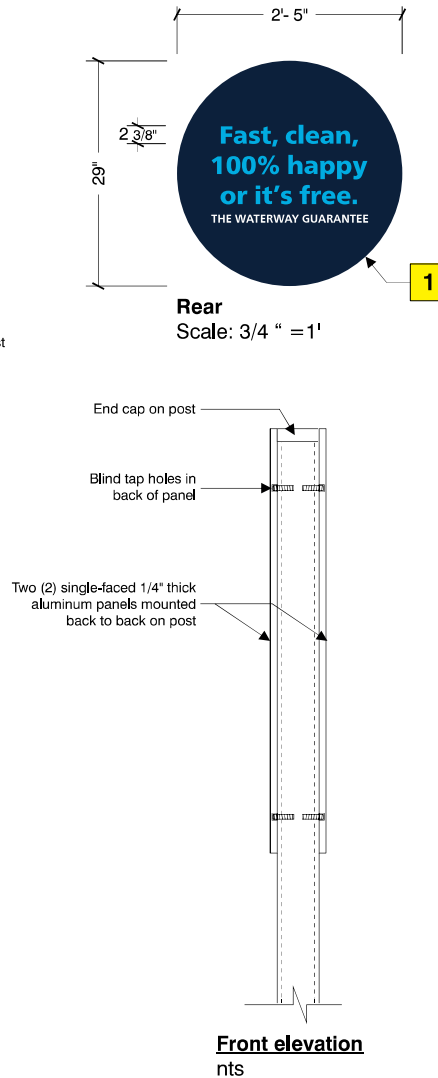
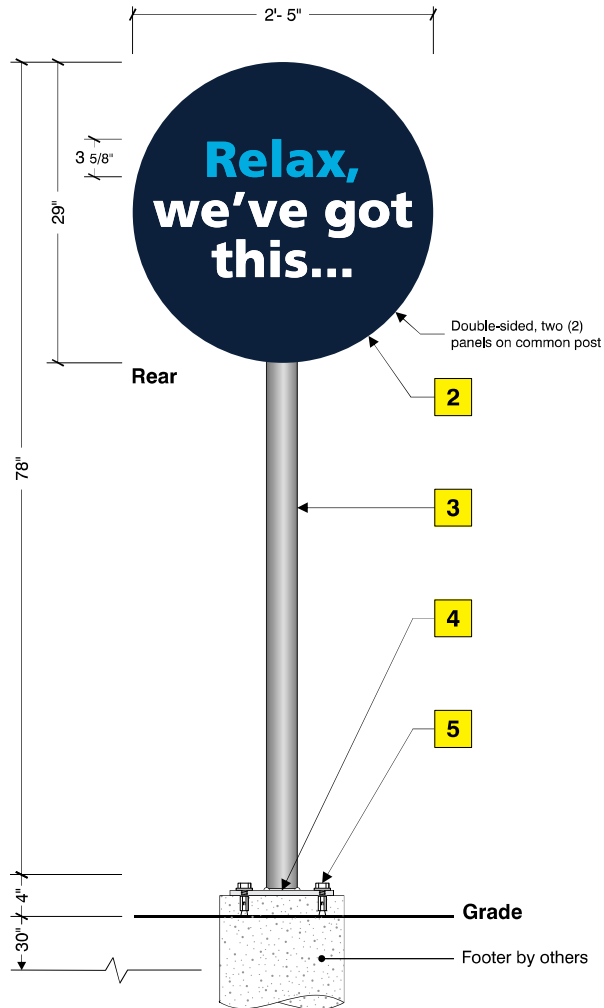
Mounting

<input type="checkbox"/> Wedge anchors For use in masonry applications.	<input type="checkbox"/> Lag screw Wood lags for solid wood backing. Concrete lags for solid masonry applications. Only when specified by NAS.
<input type="checkbox"/> Thru-Bolt w/ (Preferred) Hollow walls w/ rear access. Backing- U-Channel, angle iron or wood.	<input type="checkbox"/> Toggle bolt For use in hollow walls w/ suitable wall materials.
<input type="checkbox"/> Stud mounted	

Colors to match

PMS 306 C (Vinyl) Oracal 8500 Light Blue	PMS 286 C (Vinyl) Avery A6574-T Ultra Marine Cast 800 Blue
White	

Sales:	Lisa Koebel
PM:	Angela Wilson
Art:	GED 8.12.25
Drwg #:	247334-1-B



Letters

1 White & PMS 306 C vinyl applied first surface

Panel

2 1/4" thick double-faced round aluminum panel painted front and back Benjamin Moore Old Navy 2063-10.

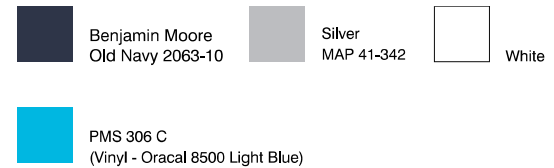
Support

3 3" x 3" aluminum tube post painted Silver MAP 41-342.

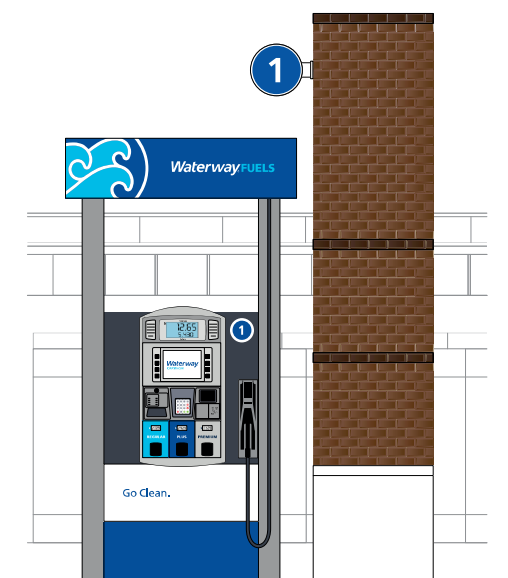
4 Tube welded to 10" dia. x 1/2" thick aluminum base plate painted Silver MAP 41-342.

5 1/2" - 13 stainless steel hex bolt & lock washer w/ 1/2" -13 x 2" zinc -plated steel concrete drop anchor. Dewalt smart DI- #6308SD (typical).

Colors to match

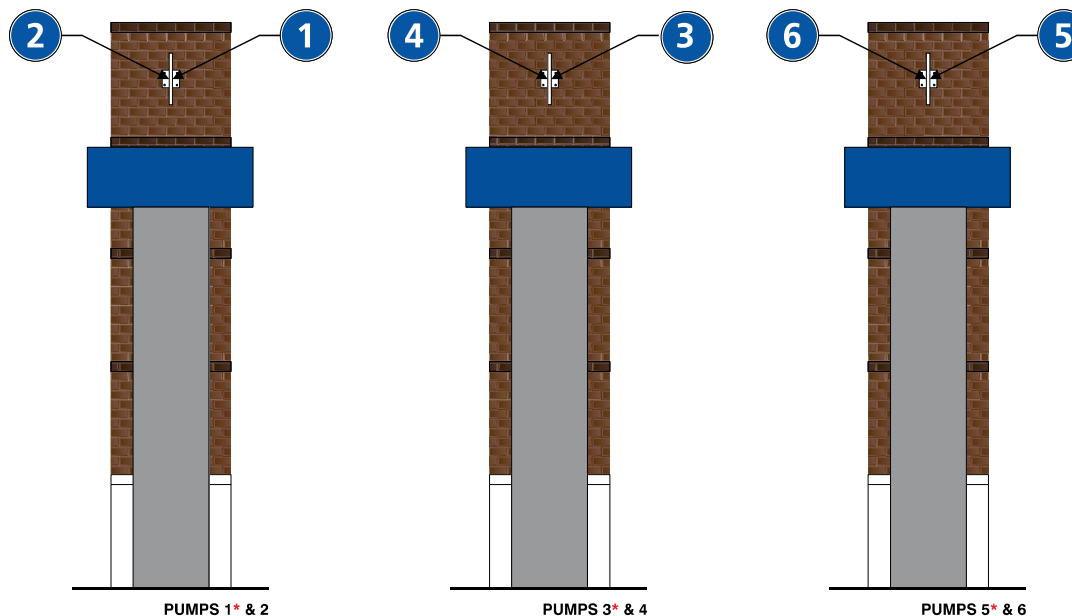


Sales:	Lisa Koebel
PM:	Angela Wilson
Art:	GED 8.18.25
Drwg #:	247334-1-B



Scale: 3/4" = 1'- 0"

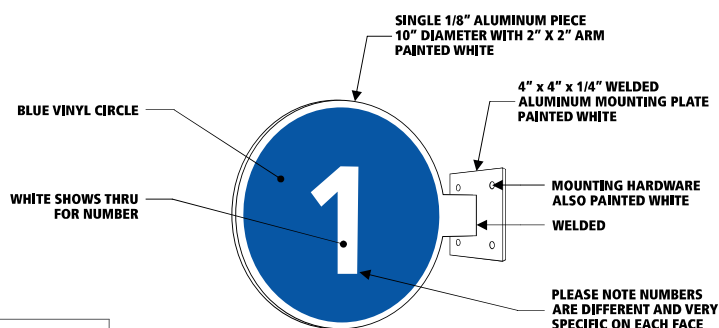
Shown as viewed from
convenience store



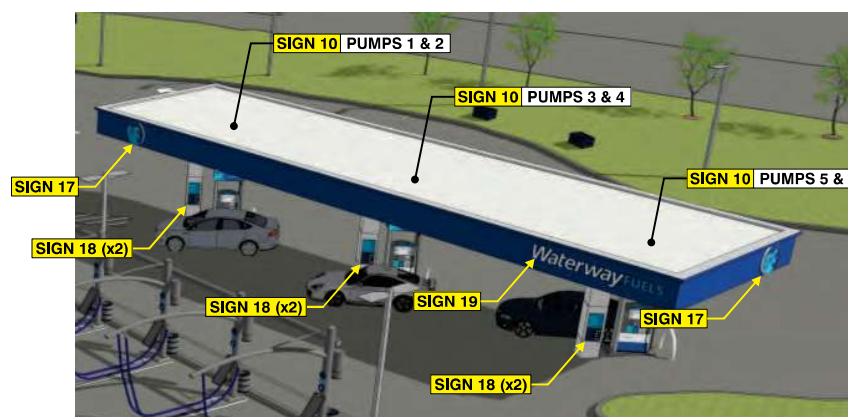
PUMPS 1* & 2

PUMPS 3* & 4

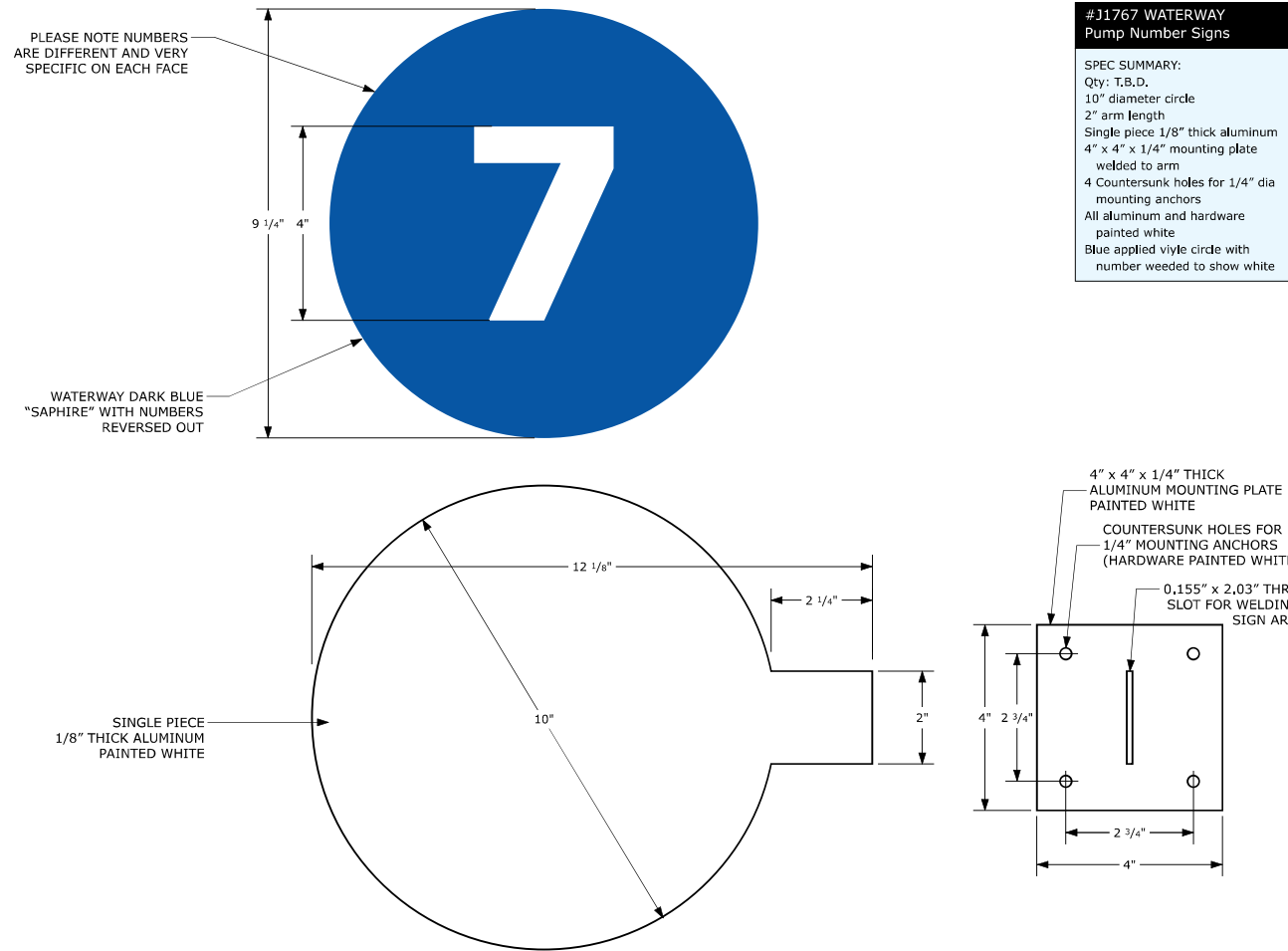
PUMPS 5* & 6



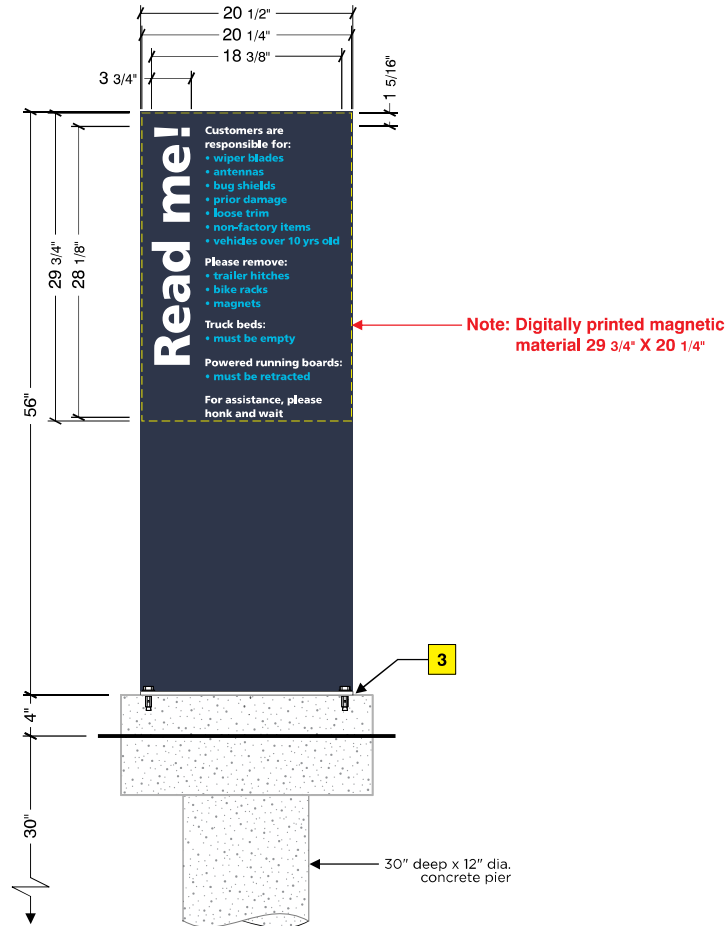
NOTE:
Odd numbers are to ne installed
facing convenience store.



Sales:	Lisa Koebel
PM:	Angela Wilson
Art:	GED 8.18.25
Drwg #:	247334-1-B

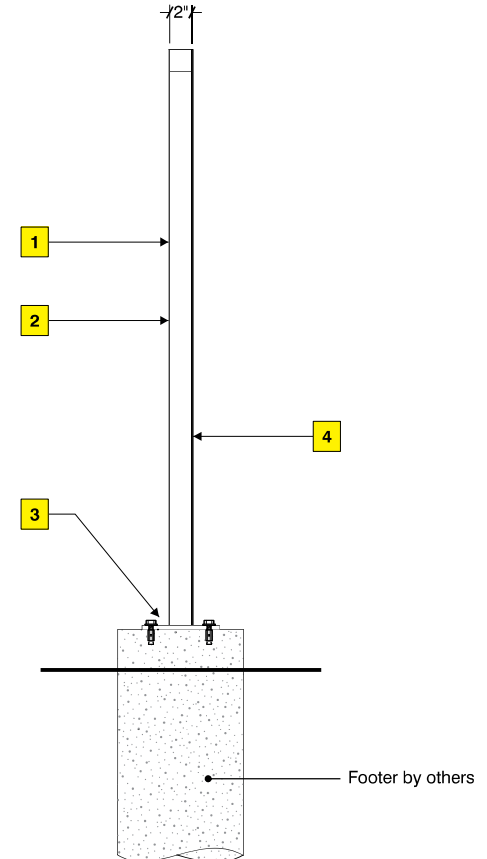


Sales:	Lisa Koebel
PM:	Angela Wilson
Art:	GED 8.18.25
Drwg #:	247334-1-B



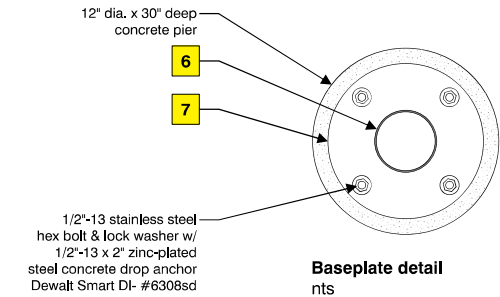
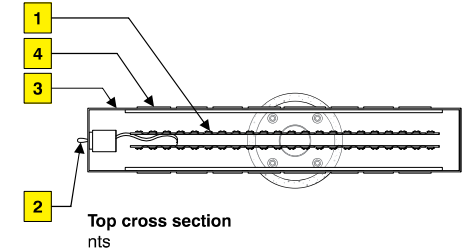
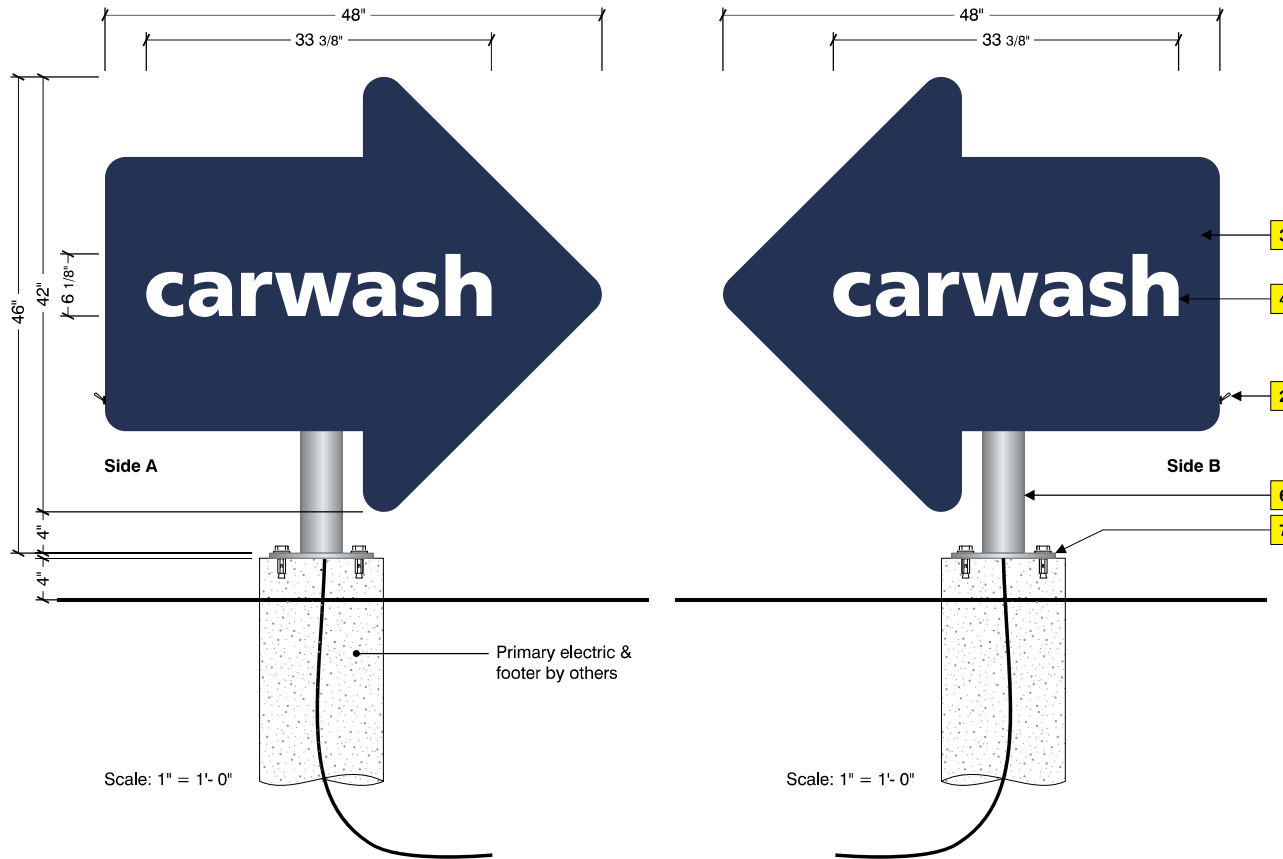
Scale: 1" = 1'-0"

1	2" square aluminum tube frame w/ .090 aluminum skin painted Benjamin Moore Old Navy 2063-10.
2	20Ga. galvanized steel face over aluminum on front only painted Benjamin Moore Old Navy 2063-10.
3	6" x 20" x 1/2" thick aluminum baseplate painted Benjamin Moore Old Navy 2063-10.
4	Aluminum painted face.


Colors to match

	Benjamin Moore Old Navy 2063-10		PMS 306 C (Oracal 8500 blue)		White
---	------------------------------------	---	---------------------------------	---	-------

Sales:	Lisa Koebel
PM:	Angela Wilson
Art:	GED 8.18.25
Drwg #:	247334-1-B


Illumination

1	Hanley PF-3120 white LEDs.
2	UL Listed disconnect switch.

Faces

3	.090 Routed aluminum painted Benjamin Moore Old Navy 2063-10.
----------	---

Letters

4	1/2" #7328 White plex push-thru letters.
----------	--

Return

5	8" Deep return painted Benjamin Moore Old Navy 2063-10.
----------	---

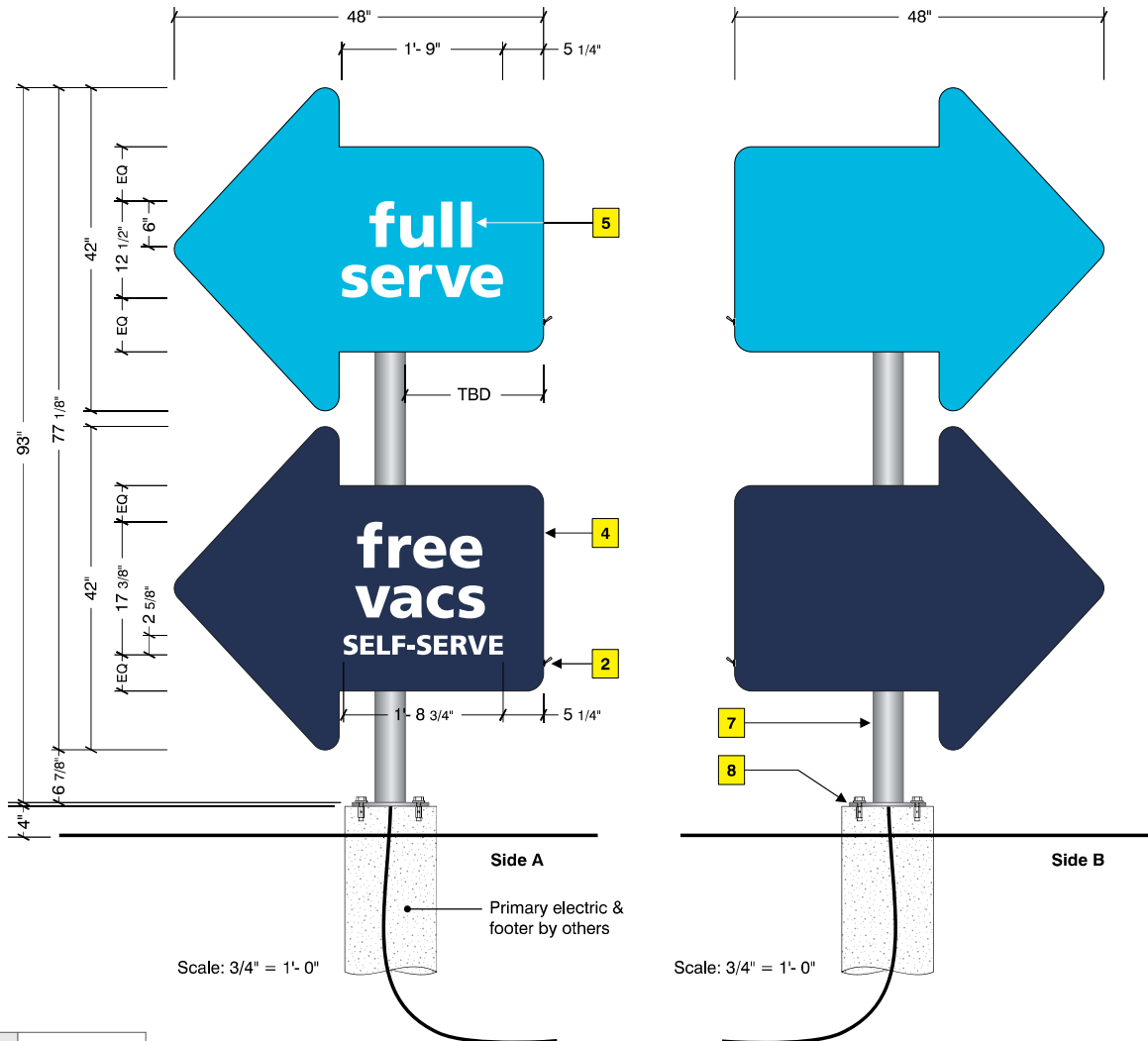
Support





6	4" Dia. aluminum post painted Silver MAP 41-342.
7	10" Dia. x 1/2" thick aluminum baseplate welded to post painted Silver MAP 41-342.

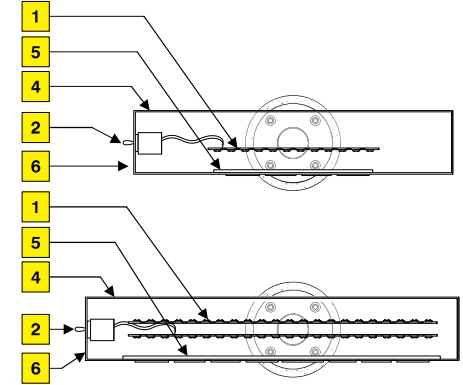
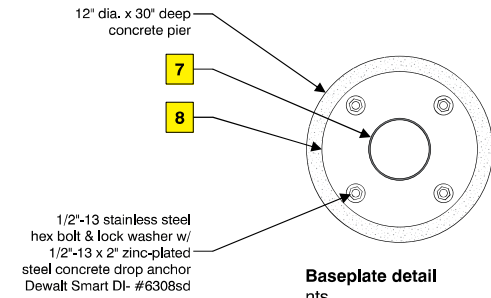
Colors to match

	Benjamin Moore Old Navy 2063-10 (face & returns)		Silver MAP 41-342		White
---	--	---	----------------------	--	-------

Sales:	Lisa Koebel
PM:	Angela Wilson
Art:	GED 8.28.25
Drwg #:	247334-1-B


Colors to match

	Benjamin Moore Old Navy 2063-10 (face & returns)		Benjamin Moore 2060-40 Toronto Blue (face & returns)		MAP 41-342 Silver		White
---	--	---	--	---	----------------------	---	-------


Cabinet top cross sections
nts

Baseplate detail
nts

Illumination

1	White LEDs.
2	UL Listed disconnect switch.
3	60W power supply.

Faces

4	.090 Routed aluminum painted Benjamin Moore 2063-10 & PMS 306 C.
----------	--

Letters

5	1/2" #7328 White plex push-thru letters.
----------	--

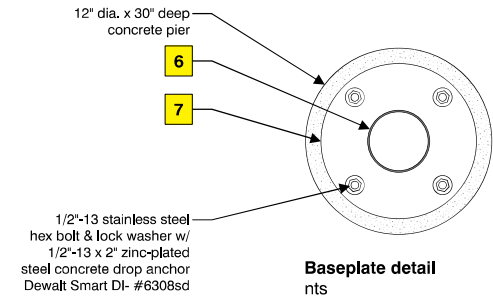
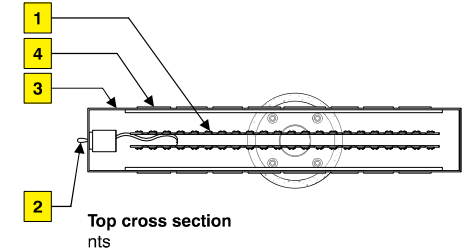
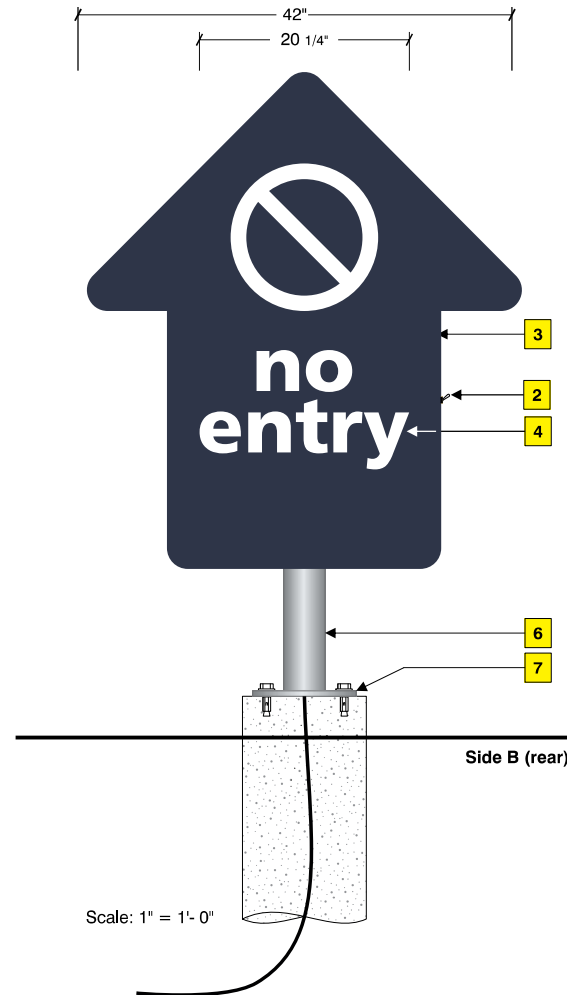
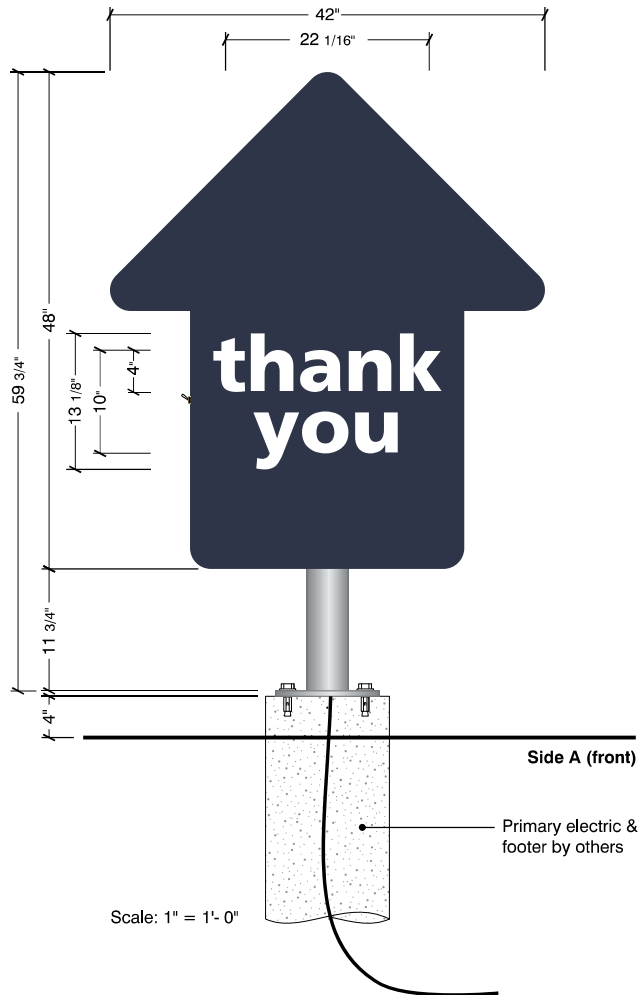
Return

6	8" Deep return painted Benjamin Moore 2063-10 & PMS 306 C.
----------	--

Support

7	4" Dia. aluminum post painted MAP Silver 41-342.
8	10" Dia. x 1/2" thick aluminum baseplate welded to post painted Silver MAP 41-342.

Sales:	Lisa Koebel
PM:	Angela Wilson
Art:	GED 8.28.25
Drwg #:	247334-1-B


Illumination

- | | |
|---|------------------------------|
| 1 | Hanley PF-3120 white LEDs. |
| 2 | UL Listed disconnect switch. |

Faces

- | | |
|---|---|
| 3 | .090 Routed aluminum painted Benjamin Moore Old Navy 2063-10. |
|---|---|

Letters

- | | |
|---|--|
| 4 | 1/2" #7328 White plex push-thru letters. |
|---|--|

Return

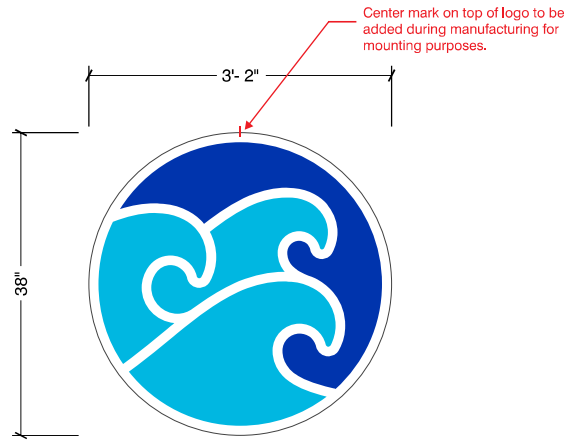
- | | |
|---|---|
| 5 | 8" Deep return painted Benjamin Moore Old Navy 2063-10. |
|---|---|

Support

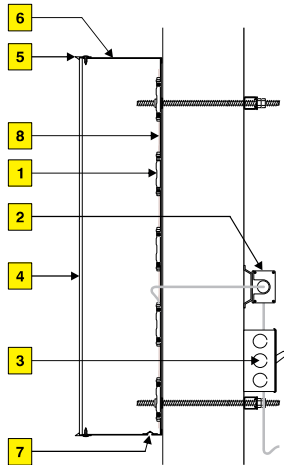
- | | |
|---|--|
| 6 | 4" Dia. aluminum post painted Silver MAP 41-342. |
| 7 | 10" Dia. x 1/2" thick aluminum baseplate welded to post painted Silver MAP 41-342. |

Colors to match


Sales:	Lisa Koebel
PM:	Angela Wilson
Art:	GED 8.28.25
Drwg #:	247334-1-B



Scale: 3/4" = 1'-0"
Sq Ft:
7.8 sq ft



Illumination

- | | |
|----------|---|
| 1 | White LEDs. |
| 2 | Remote power supply. |
| 3 | Logo to have UL Listed disconnect switch. |

Faces

- | | |
|----------|--|
| 4 | #7328 white acrylic. Colors to match white, PMS 306 C (vinyl: Oracal 8500 Light Blue) & PMS 286 C (vinyl: Avery A6574-T Ultra Marine Cast 800 Blue. Applied first surface. |
| 5 | Logo to have 1" white trim cap. |

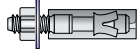

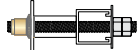


Returns

- | | |
|----------|--|
| 6 | 3" x .040 Aluminum painted to match PMS 286. |
| 7 | 1/4" weep holes required. |

Backs

- | | |
|----------|------------------------|
| 8 | White aluminum or ACM. |
|----------|------------------------|

Mounting

 Wedge anchors For use in masonry applications.	 Lag screw Wood lags for solid wood backing. Concrete lags for solid masonry applications. Only when specified by NAS.
 Thru-Bolt w/ (Preferred) Hollow walls w/ rear access. Backing- U-Channel, angle iron or wood.	 Toggle bolt For use in hollow walls w/ suitable wall materials.
 Stud mounted	

Colors to match

	PMS 306 C (Vinyl) Oracal 8500 Light Blue		PMS 286 C (Vinyl) Avery A6574-T Ultra Marine Cast 800 Blue
	White		

Sales:	Lisa Koebel
PM:	Angela Wilson
Art:	GED 8.21.25
Drwg #:	247334-1-8



Scale: 1 1/2" = 1'-0"

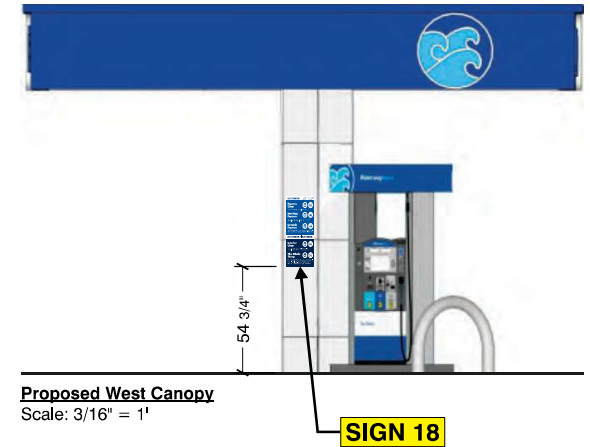
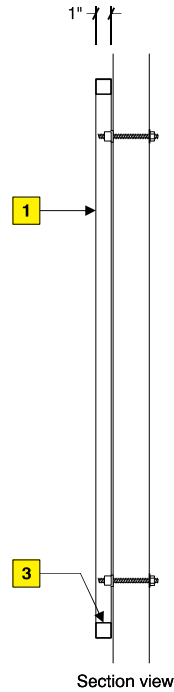
Note:
This is a North American Signs
Art Department re-created layout.
Client to provide approved vector
art prior to production.

Face

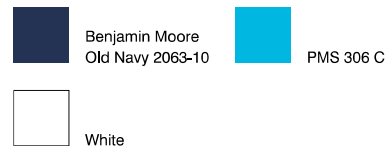
- 1 16 gauge cold rolled steel painted Benjamin Moore Old Navy 2063-10.
- 2 Digitally printed magnetic overlay applied first surface.

Frame

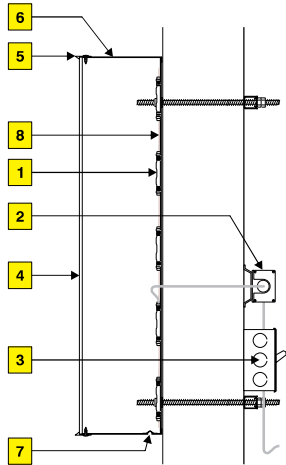
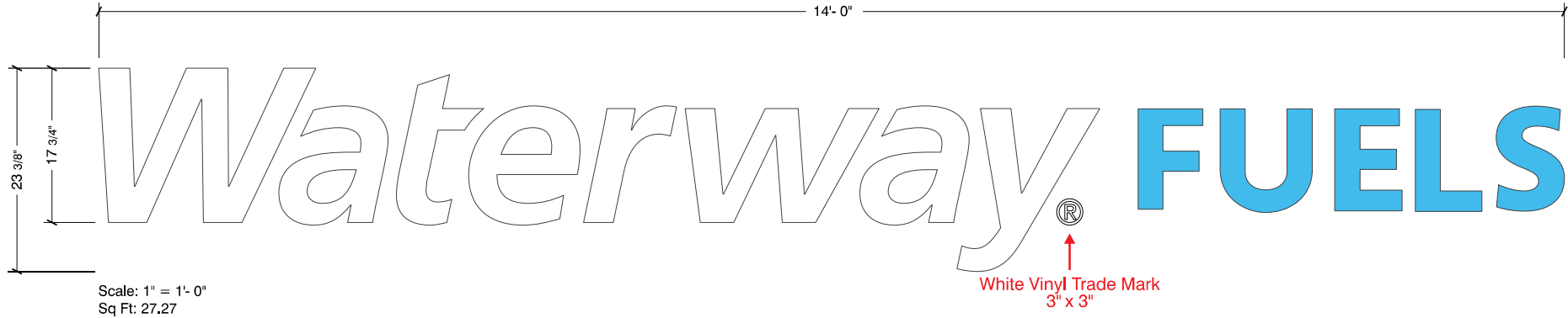
- 3 1" x 11 Gauge square steel tube w/ nut inserts for mounting painted Benjamin Moore Old Navy 2063-10.



Colors to match



Sales:	Lisa Koebel
PM:	Angela Wilson
Art:	GED 8.18.25
Drwg #:	247334-1-B


Illumination

- 1 White LEDs.
- 2 Remote power supplies.
- 3 Logo & letters to have UL Listed disconnect switches.

Faces

- 4 #7328 white acrylic, "FUEL" letters to have PMS 306 C (vinyl Oracal 8500 Light Blue) applied first surface.
- 5 "Waterway" letters; 1" white Jewel-Lite trim cap, "FUELS" letters; 1" Jewel-Lite trim cap painted to match PMS 306 C.

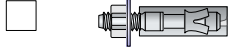
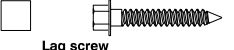



Returns

- 6 3" x .040 Aluminum painted to match PMS 286.
- 7 1/4" weep holes required.

Backs

- 8 White aluminum or ACM.

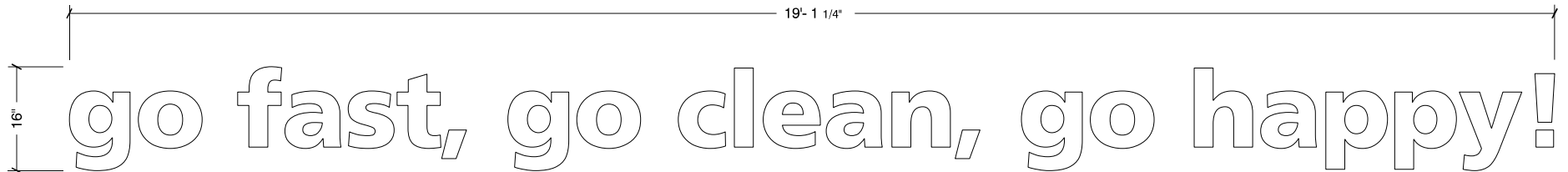
Mounting

 Wedge anchors For use in masonry applications.	 Lag screw Wood lags for solid wood backing. Concrete lags for solid masonry applications. Only when specified by NAS.
 Thru-Bolt w/ (Preferred) Hollow walls w/ rear access. Backing- U-Channel, angle iron or wood.	 Toggle bolt For use in hollow walls w/ suitable wall materials.
 Stud mounted	

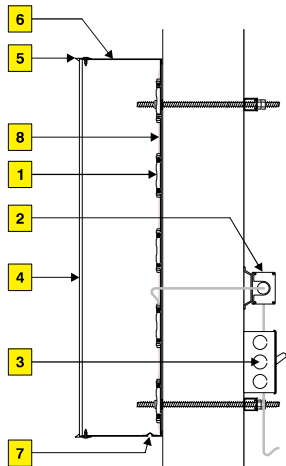
Colors to match

	PMS 306 C (Vinyl) Oracal 8500 Light Blue		PMS 286 C (Vinyl) Avery A6574-T Ultra Marine Cast 800 Blue
	White		

Sales:	Lisa Koebel
PM:	Angela Wilson
Art:	GED 8.21.25
Drwg #:	247334-1-B



Scale: 3/4" = 1'-0"
Sq Ft: 25.47


Illumination

- | | |
|---|---|
| 1 | White LEDs. |
| 2 | Remote power supplies. |
| 3 | Logo & letters to have UL Listed disconnect switches. |

Faces

- | | |
|---|-------------------------------|
| 4 | #7328 white acrylic. |
| 5 | 1" White Jewel-Lite trim cap. |

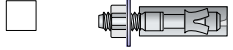
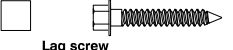



Returns

- | | |
|---|---|
| 6 | 3" x .040 Aluminum painted Benjamin Moore Old Navy 2063-10. |
| 7 | 1/4" Weep holes required. |

Backs

- | | |
|---|------------------------|
| 8 | White aluminum or ACM. |
|---|------------------------|

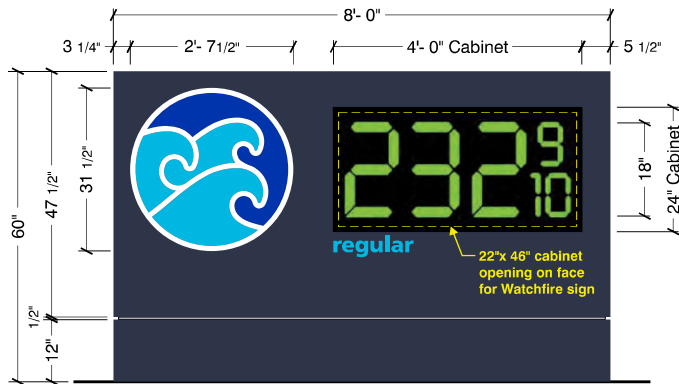
Mounting

 Wedge anchors For use in masonry applications.	 Lag screw Wood lags for solid wood backing. Concrete lags for solid masonry applications. Only when specified by NAS.
 Thru-Bolt w/ (Preferred) Hollow walls w/ rear access. Backing- U-Channel, angle iron or wood.	 Toggle bolt For use in hollow walls w/ suitable wall materials.
 Stud mounted	

Colors to match

	PMS 306 C (Vinyl) Oracal 8500 Light Blue		Benjamin Moore Old Navy 2063-10
	White		

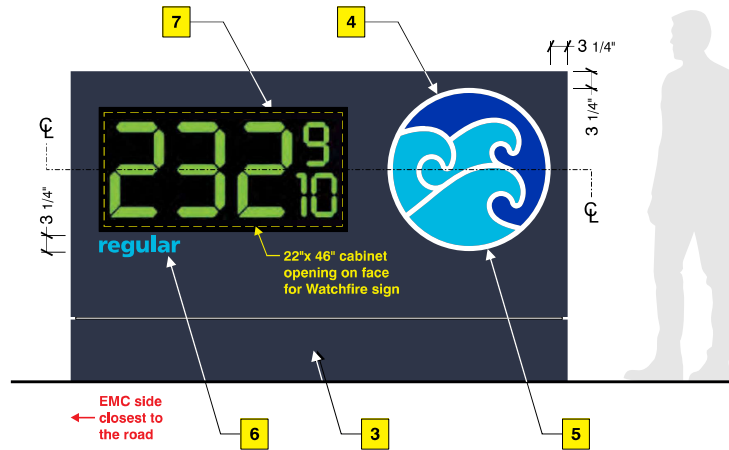
Sales:	Lisa Koebel
PM:	Angela Wilson
Art:	GED 8.18.25
Drwg #:	247334-1-B



Monument elevation

Scale: 1/2" = 1'-0"

EMC side
closest to
the road →



EMC side
closest to
the road ←

Cabinet

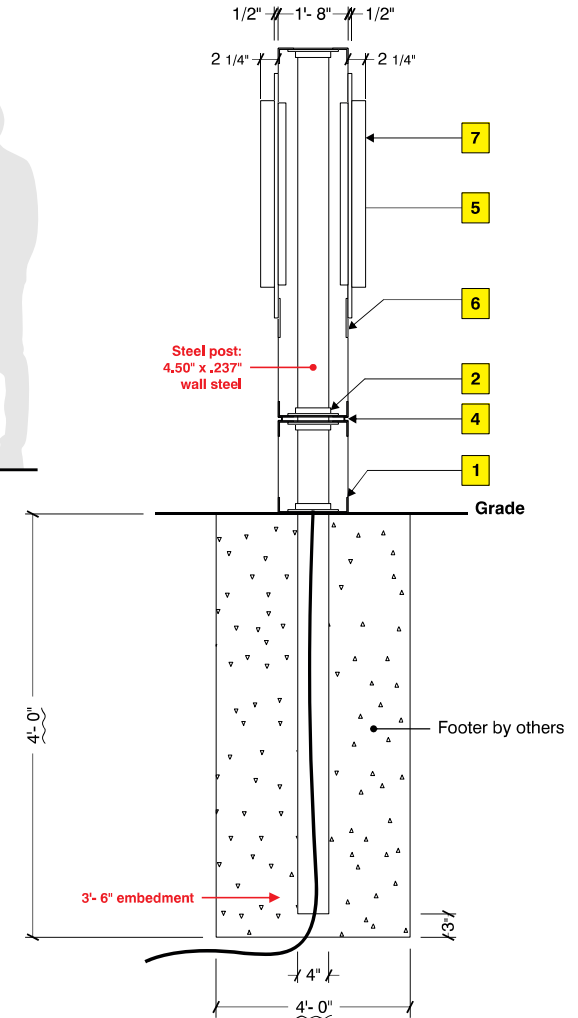
1	Frame is 2" x 2" x 3/16" aluminum angle frame.
2	Steel saddles and pole guides for a 5 1/2" O.D. steel pipe.
3	Faces are .125" aluminum w/ routed openings for EMCs, logo & sub copy. Faces attached w/ Lords 406 adhesive. Cabinet is painted Benjamin Moore Old Navy 2063-10.
4	Cabinet to have a 1/2" reveal inset 1" all sides. Painted Silver MAP 41-342.
5	Logo is 3/4" acrylic pushed thru 1/2". Logo to have blue vinyl colors 1st surface & white diffuser vinyl applied 2nd surface.
6	Routed sub-copy backed w/ polycarbonate. Routed sub-copy w/ Oracal 8500 Light Blue vinyl applied first surface.
7	Digital EMC price displays bolt to face of cabinet.
8	Two (2) Watchfire EMC PWPRC mono displays 24" x 48" x 3". EMC price displays partially inset in frame. Face of EMCs to sit 2 1/4" proud of cabinet face.

Colors to match

	PMS 286 C (Vinyl) Avery A6574-T Ultra Marine Cast 800 Blue		Benjamin Moore Old Navy 2063-10
	PMS 306 C (Vinyl) Oracal 8500 Light Blue		Silver MAP 41-342 Akzo Nobel

NOTE
LED Illumination With Internal Power Supplies
External Disconnect Switch.

Communications:
POS / Campus Interface for Pricewatcher
Low Frequency Radio

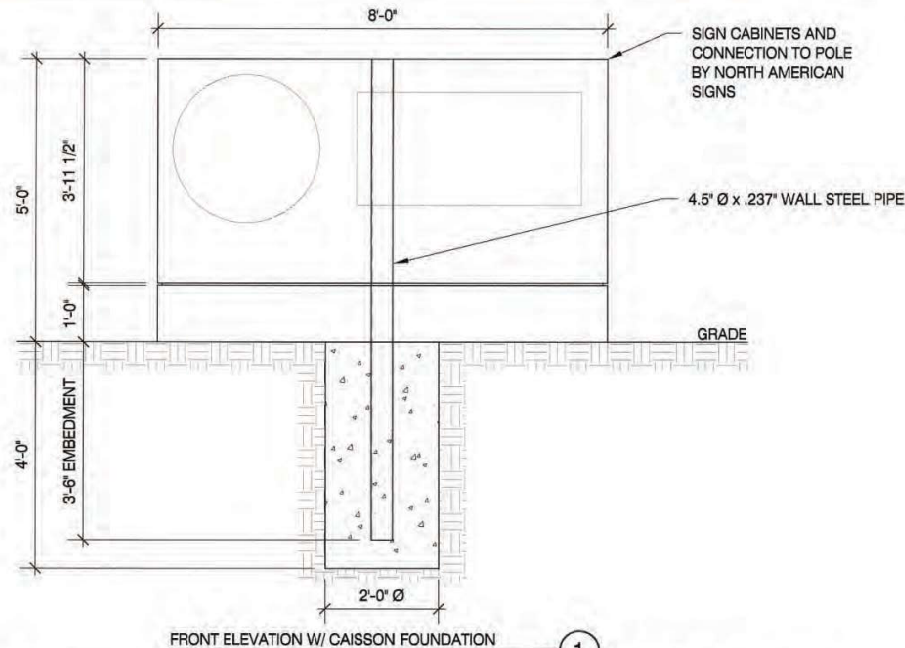


Monument side elevation

Scale: 3/4" = 1'-0"

Sales:	Lisa Koebel
PM:	Angela Wilson
Art:	GED 8.28.25
Drwg #:	247334-1-B

1. REFER TO SIGN COMPANY'S DRAWINGS FOR MORE DETAILS. ALL DESIGNS, DETAILING FABRICATION AND CONSTRUCTION SHALL CONFORM TO:
 DETAILING FABRICATION AND CONSTRUCTION SHALL CONFORM TO:
 ACI
 AISC
 AMERICAN WELDING SOCIETY
 LOCAL BUILDING CODES & ORDINANCES
2. CONCRETE: 2500 PSI @ 28 DAYS
3. STD. STEEL PIPE SECTION: ASTM A53 GRADE B ($F_y=35$ KSI), U.N.O.
4. STEEL PIPE SECTION ($> 20" \varnothing$): ASTM A252 GRADE 3 ($F_y=42$ KSI MIN.) U.N.O.
5. HSS ROUND SECTION: ASTM A500 GRADE B ($F_y=42$ KSI) U.N.O.
6. HSS SQUARE/RECTANGULAR SECTION: ASTM A500 GRADE B ($F_y=46$ KSI)
7. W SHAPES: ASTM A992 ($F_y = 50$ KSI)
8. ANCHOR BOLTS: ASTM F1554 GRADE 36 U.N.O. (ALTERNATES GRADE 55 & 105)
9. CONNECTION BOLTS: ASTM A325
10. THREADED RODS: ASTM A193 GRADE B7
11. STEEL ANGLES, CHANNELS, STRUCTURAL SHAPES & PLATES ASTM A36
12. REINFORCING: GRADE 60 ASTM A615
13. PROVIDE A MINIMUM OF THREE INCHES OF CONCRETE COVER OVER EMBEDDED STEEL.
14. THE CONTRACTOR (INSTALLER) IS RESPONSIBLE FOR THE MEANS & METHODS OF CONSTRUCTION IN REGARDS TO JOBSITE SAFETY.
15. NO FIELD HEATING FOR BENDING OR CUTTING OF STEEL SHALL BE ALLOWED WITHOUT THE ENGINEER'S APPROVAL.
16. WELDING ELECTRODES: E70XX
17. ALLOWABLE VERTICAL SOIL BEARING PRESSURE ASSUMED: 2000 PSF
18. ASSUMED HORIZONTAL (PASSIVE PRESSURE) ASSUMED AT 150 PSF/FT OF DEPTH. ISOLATED LATERAL BEARING FOUNDATIONS FOR SIGNS NOT ADVERSELY AFFECTED A 1/2" MOTION AT THE GROUND SURFACE DUE TO SHORT TERM LATERAL LOADS SHALL BE PERMITTED TO BE DESIGNED USING TWO TIMES THE TABULATED CODE VALUES.
19. ALL FOOTINGS SHALL BEAR ON FIRM UNDISTURBED RESIDUAL SOIL AND/OR ENGINEERED EARTH.
20. EXCAVATION SHALL BE FREE OF LOOSE SOIL BEFORE POURING CONCRETE.
21. WELDERS SHALL BE CERTIFIED FOR THE TYPE OF WELDING.
22. ADEQUATELY BRACE POLE(S) UNTIL CONCRETE HAS SET UP FOR 14 DAYS.
23. GROUT UNDER BASE PLATES WITH NON-SHRINK GROUT.
24. THIS ENGINEER DOES NOT WARRANT THE ACCURACY OF DIMENSIONS FURNISHED BY OTHERS.
25. ALL EXPOSED STEEL SHALL BE PAINTED WITH AN ENAMEL PAINT TO INHIBIT CORROSION.
26. THIS DESIGN IS FOR THE INDICATED ADDRESS ONLY, AND SHOULD NOT BE USED AT OTHER LOCATIONS WITHOUT WRITTEN PERMISSION OF THE ENGINEER.
27. DESIGN OF DETAILS AND STRUCTURAL MEMBERS NOT SHOWN, BY OTHERS.



FRONT ELEVATION W/ CAISSON FOUNDATION

WIND DATA

Building Code

2018 IBC

Wind Load Criteria

ASCE 7-16

Wind Speed, V

116 mph

Exposure Category

C

Wind Pressure Override per Jurisdiction Requirement

0 psf

Importance Factor, I

1.0

Directionality Factor, K_d⁽²⁾

0.85

Topography Factor, K_{zt}

1.0

Base Pressure, q/(K_dK_{zt}V)

15.8 psf

ASD Wind Load Factor, γ

0.6

DEFLECTION ANALYSIS

Deflection Limit

H/60

Deflection at 0.7" W

0.08 in

Deflection Ratio

H/735

Notes:

(1) Loading values in chart below are based upon average K_d values for each segment. Actual values are calculated on a hidden sheet using derived V-M equation. Chart is provided for information purposes only.

(2) Wind directionality (K_d) factor is 0.95 for Single Pole (Round) segments instead of 0.85. The C_d value from Fig. 6-21 has been increased by 0.95/0.85 to account for this variation.

(3) Wind pressures listed below have already been multiplied by the ASD Wind Load Factor, γ.

GEOMETRY INPUT⁽¹⁾

Monument: Yes

No. of Poles

1

No. of Footings

1

Section	Location	Type	Height		Horz. Offset	Area	Top Elev.		Centroid	Wind Press.	Support Pole Loads			Footing Loads		
			f	F			f	F			T	C	Trib.	Shear	Moment	Trib.
1	Base	Single Pole w/ Cabinet	1.0	8.00	3.0	1.0	0.4	0.85	1.32	15.1	1.0	0.1	0.1	1.0	0.1	0.1
2		Single Pole w/ Cabinet	0.4	7.83	0.3	1.0	1.0	0.85	2.16	24.5	1.0	0.0	0.0	1.0	0.0	0.0
3		Single Pole w/ Cabinet	3.96	8.00	31.7	5.0	3.2	0.85	1.55	17.5	1.0	0.6	1.8	1.0	0.6	1.8
Overall Height:			5.00 ft													
Summation based upon averages above:											0.7	1.9		0.7	1.9	
Actual base reactions based upon V-M equations:											0.7	1.9		0.7	1.9	

SUPPORT POLE DESIGN SUMMARY

MATERIAL = STEEL

Base Elev

Section

Axis

Required Strength Values (ASD)

Allowable Strength Values (ASD)

Unity Ratios

Interaction Ratios

f	V _n	K _n	kip-ft	kip-ft	V _n	M _n	T _n	P _n	V _n /V _c	M _n /M _c	T _n /T _c	P _n /P _c	P-M	M-M+T	Status		
																kip-ft	kip-ft
0.00	4.5 ft W x 4.23 ft Wall	Strong	0.7	1.9	1.1	0.5	20.7	7.1	6.6	45.0	3.3%	27.3%	16.5%	1.0%	28.3%	0.0%	✓

FOUNDATION DESIGN SUMMARY

Type

Diameter

Width

Thickness

Length

Depth

Volume

Reinforcing

Status

Allowable Soil Pressure

Type	f	F	t	L	D	C _v		OK	300 psf/ft
✓ Calson	2.00	—	—	—	4.00	47		OK	300 psf/ft

MONUMENT CALCULATIONS

SCALE: N.T.S.

MBI

PROJECT:
100 NW PRYOR RD, LEE'S SUMMIT, MO 65081 JACKSON COUNTY

DRAWING TITLE:

WATERWAY

DRAWN BY: MRW	CHECKED BY: MAH	COMM. NO. 250113-027-00
------------------	--------------------	----------------------------

MBI COMPANIES INC. - ENGINEERING
 MISSOURI STATE CERTIFICATE OF AUTHORITY
 # E- 2004032066-F F00514351

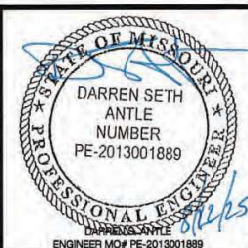
DATE: 08/22/2025

REV #	DATE	DRAWN BY

DRAWING NO.

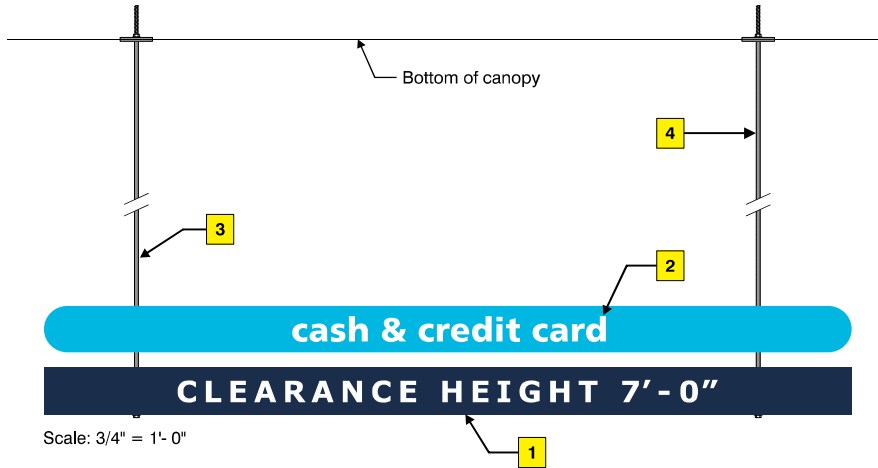
DWG.

1



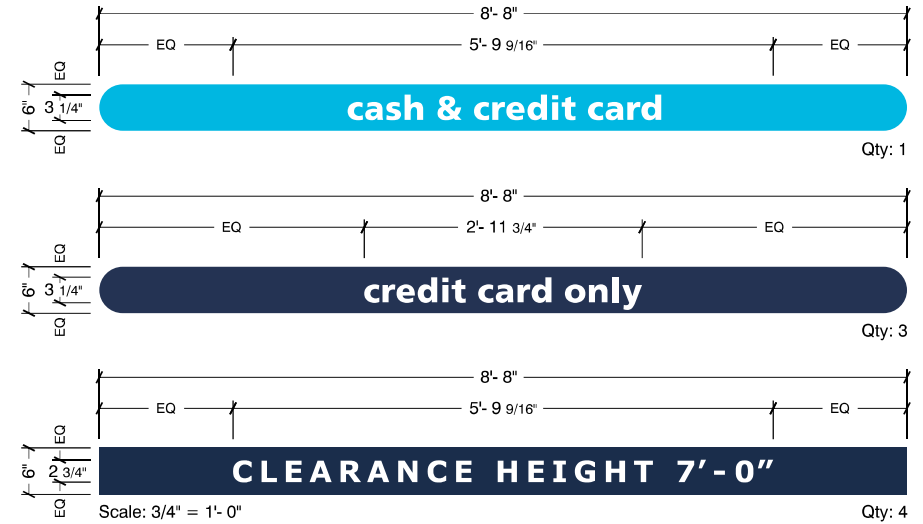
Page 36 of 48

Refer to page 16 for elevation
See mounting detail page 34.



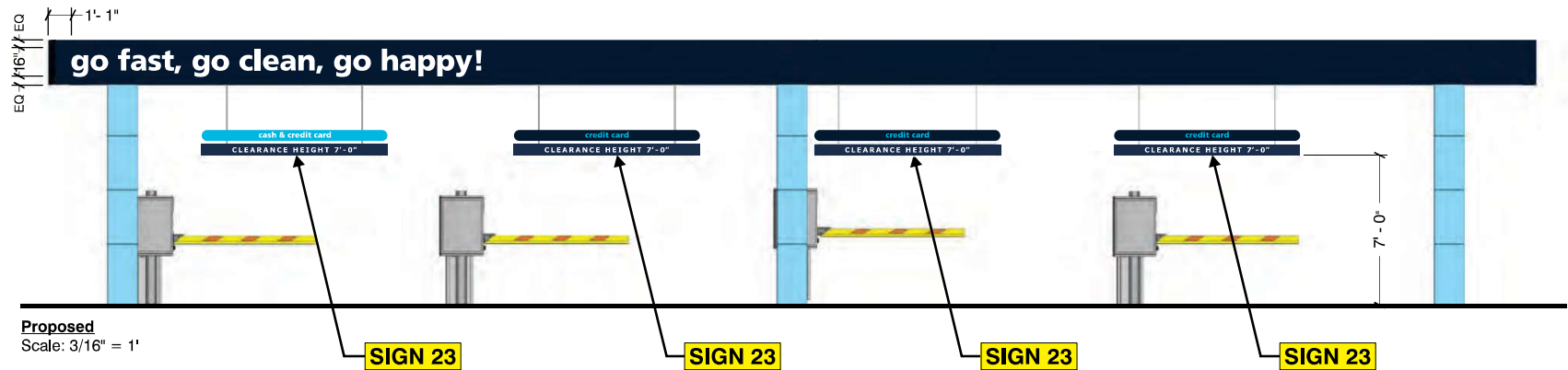
Panel

1	25mm material TBD. cash & credit panel painted to match PMS 306C. All others painted Benjamin Moore Old Navy 2063-10.
2	White vinyl copy applied first surface.
3	Threaded rods, washers, nuts, spacers, aluminum tubes & mounting plates. Mounting hardware painted color TBD.

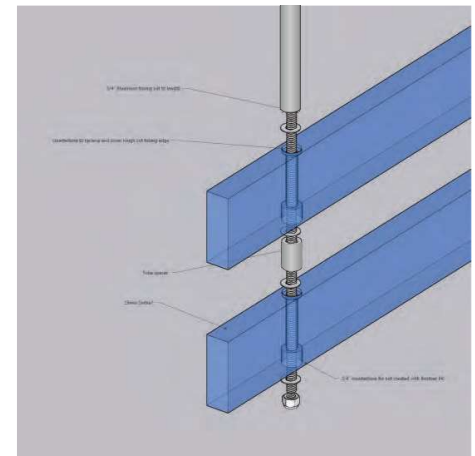
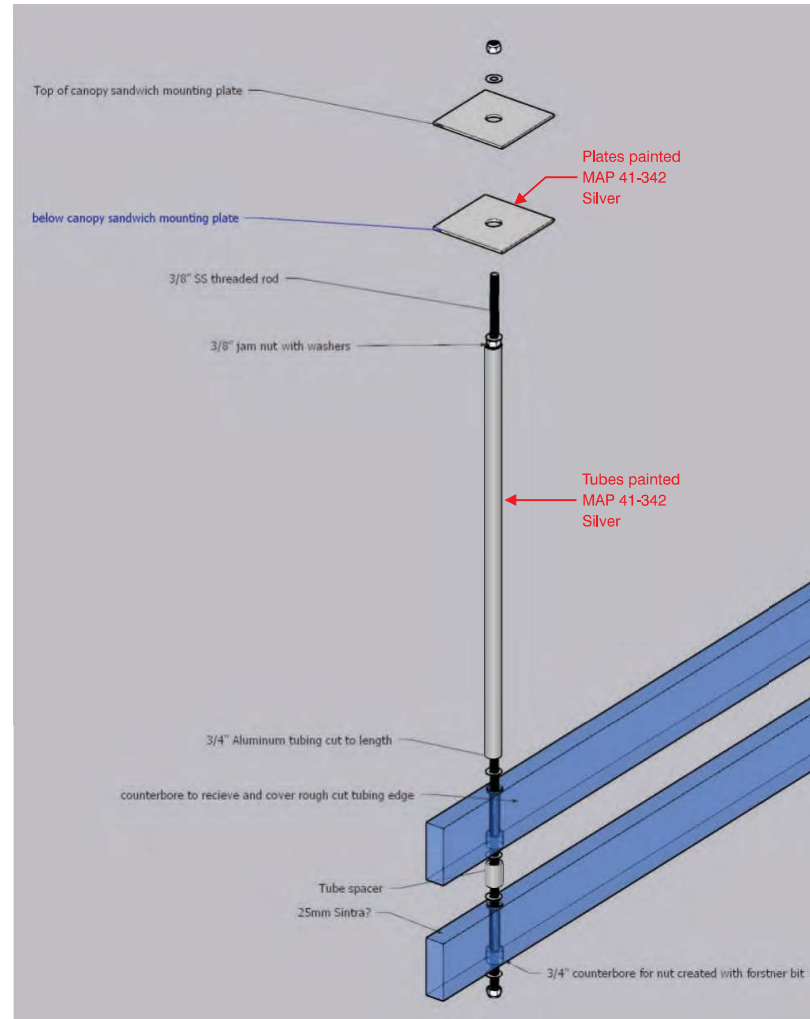
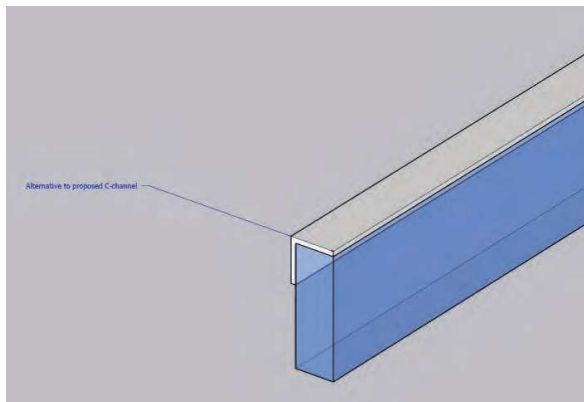
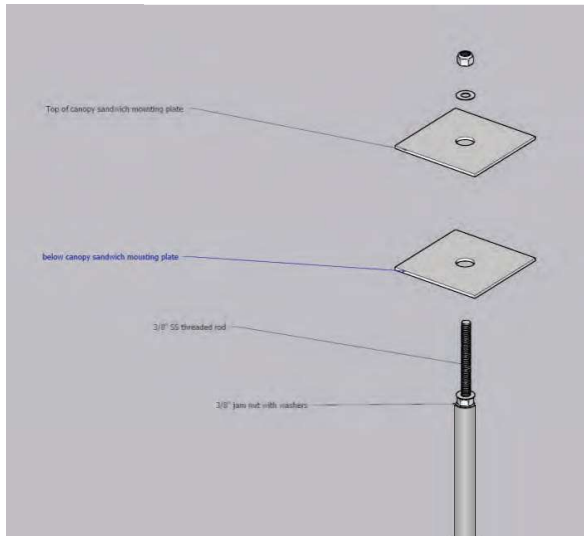


Colors to match

Benjamin Moore Old Navy 2063-10	PMS 306 C (Oracal 8500 blue)	White	MAP 41-342 Silver
------------------------------------	---------------------------------	-------	----------------------



Sales:	Lisa Koebel
PM:	Angela Wilson
Art:	GED 8.21.25
Drwg #:	247334-1-B



Sales:	Lisa Koebel
PM:	Angela Wilson
Art:	GED 8.21.25
Drwg #:	247334-1-B