



# SAINT LUKE'S EAST HOSPITAL SUITE 300 REMODEL 20 NE SAINT LUKE'S BLVD. LEE'S SUMMIT, MO 64086

## PROJECT TEAM

**ARCHITECT**  
ACI BOLAND, INC.

1710 WYANDOTTE STREET  
KANSAS CITY, MO 64108  
PHONE 816.763.9600

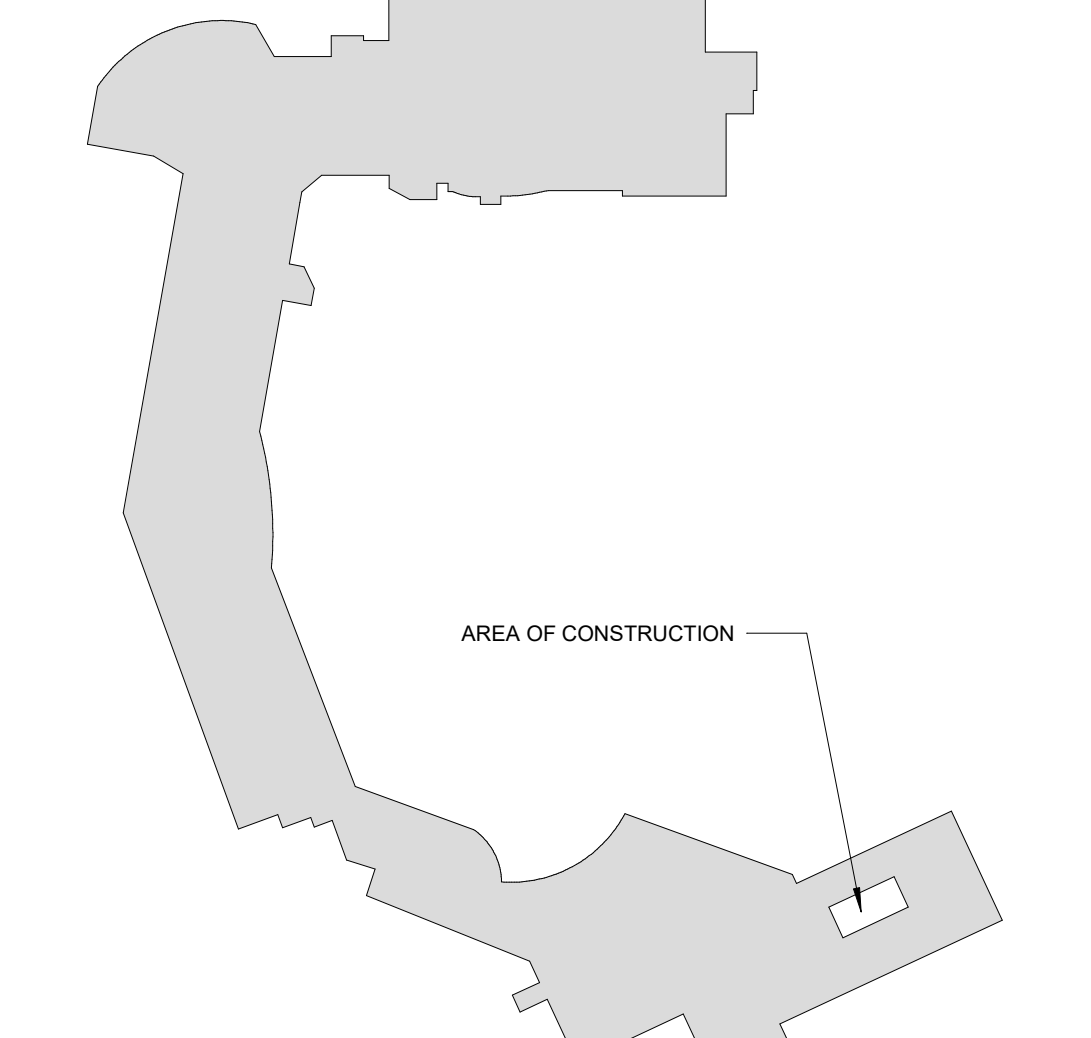
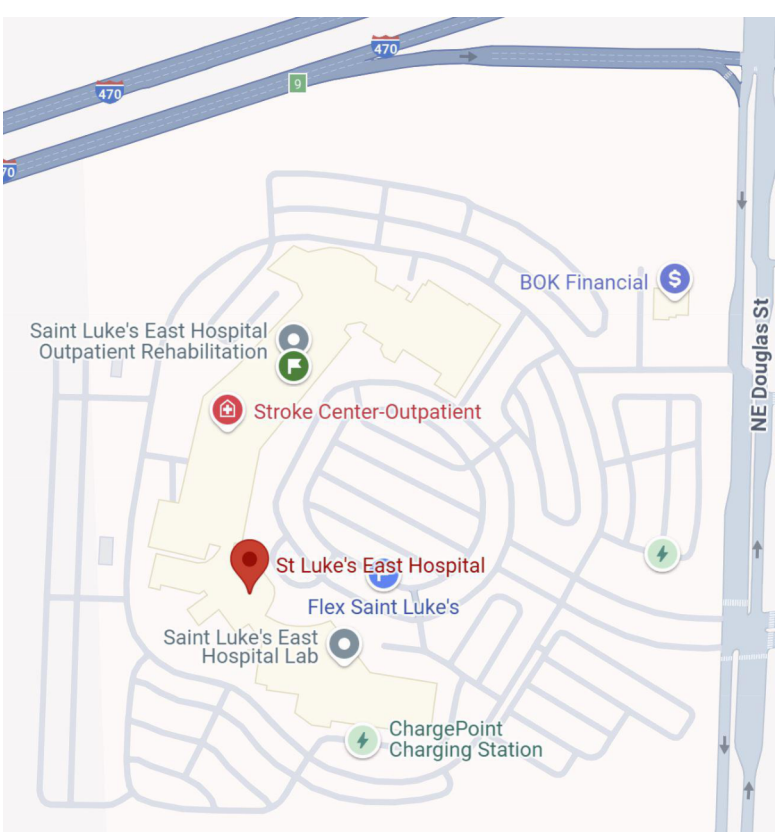
**MEP CONSULTANT**  
IMEG

1600 Baltimore Ave, Suite 300  
Kansas City, MO 64108  
PHONE 816.842.8437

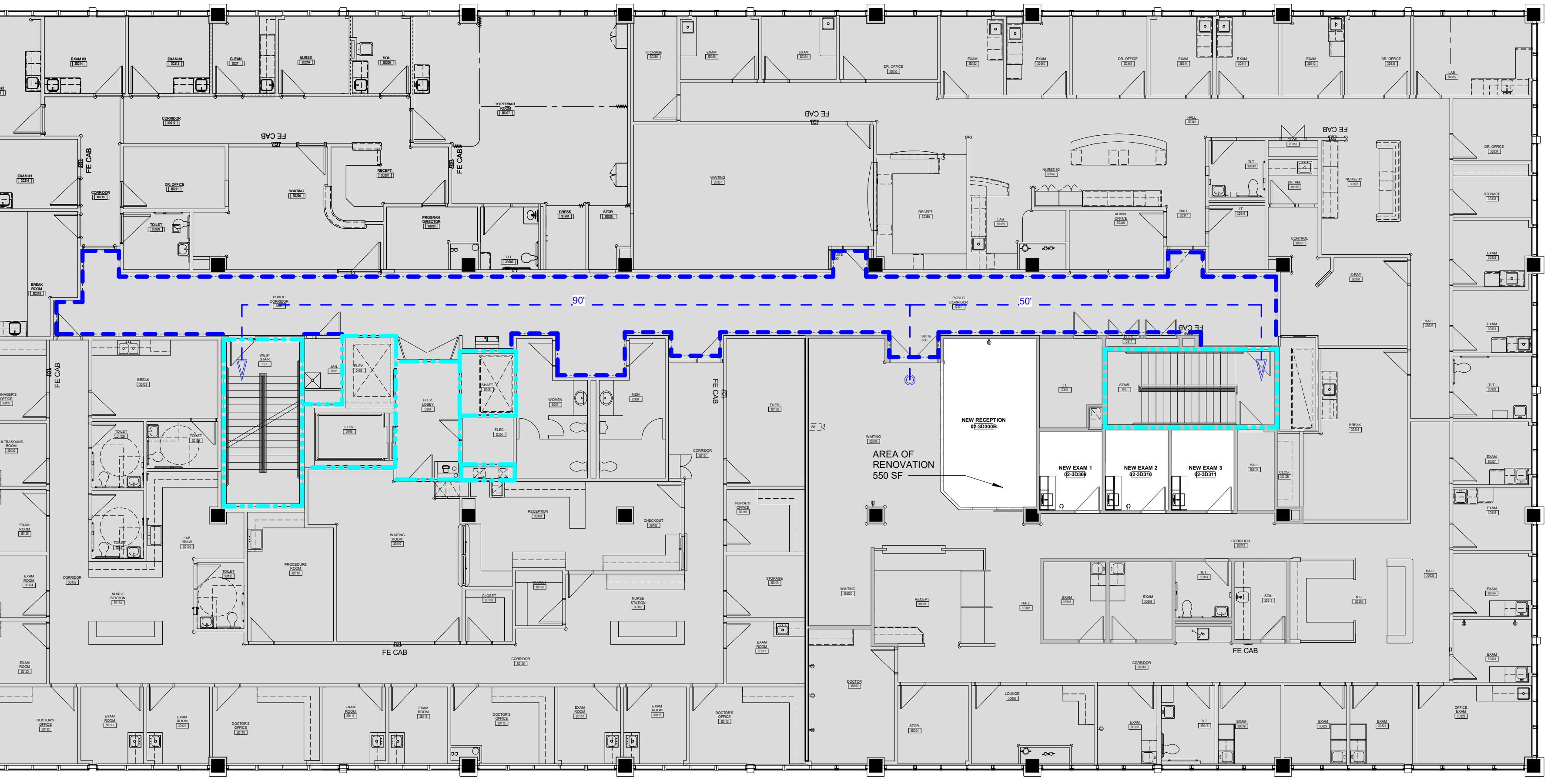
### ABBREVIATIONS

ABC	AGGREGATE BASE COURSE	G	GRAM	QBT	QUARRY BASE TILE
AC	ACOUSTIC CEILING TILE	GA	GAUGE	QT	QUARRY TILE
ACD	AIR CONDITIONING	GAUV	GALVANIZED	QTZ	QUARTZ
ADD	ADDENDUM	GL	GRADE		
AG	ABOVE FINISH FLOOR	GLT	GLASS / GLAZING	R	RISER, RISERS
AG	ARCHITECTURAL GLASS	GLT	GLASS WALL TILE	RAD	RADIUS
AGG	AGGREGATE	GND	GROUND	RB	RESILIENT BASE
ALT	ALTERNATE	GRI	GRILLE	RBF	RUBBER FLOOR
ALUM	ALUMINUM	GT	GROUT	RD	ROOF DRAIN
AP	ACRYLIC PANEL	GYP	GYPSUM BOARD	REG	REGISTER
ARCH	ARCHITECT	GY	GYPSUM	REQD	REQUIRED
ASF	ARCHITECTURAL SURFACE	HYP		RES	RESINOUS
FINISH		HON	HOSE BIB	RES	RESINOUS WALLCOVERING
ASP	ASPHALT	HDW	HARDENER	REV	REVISION
AWC	ACOUSTIC WALLCOVERING	HDWD	HARDWOOD	RFG	ROOFING
AWP	ACOUSTIC WALL PANEL	HDR	HOLLOW METAL	RGH	ROUGH
&	AND	HORIZ	HORIZONTAL	RM	ROOM
@	BOARD	HR	HANDRAIL	RND	ROUND
BD	BOARD	HT	HEIGHT	RO	ROUGH OPENING
BLDG	BUILDING	HTR	HEATER	RSF	RESILIENT SHEET FLOOR
BLK	BLOCKING	HW	HOT WATER	RST	RUBBER STAIR TREAD
BM	BEAM				
BO	BOTTOM OF				
BR	BUMPER RAILS	IB	INTEGRAL BASE	S	STAINLESS STEEL SINK
BRC	BRUSHED CONCRETE	INCH	INCH / INCHES	SCHD	SCHEDULE
BSMT	BASEMENT	INSUL	INSULATION	SCH	SCHEDULE
		INT	INTERIOR	SCT	SHOWER CURTAIN TRACK
CBT	CERAMIC BASE TILE	INVT	INVERT	SDG	SIDING
CC	CUBICLE CURTAIN	IS	INTEGRAL SINK	SECT	SECTION
CCT	CUBICLE CURTAIN TRACK	JAN	JANITOR	SEL	SELECT
CEM	CEMENT/CEMENTITIOUS	JT	JOINT	SHG	SHEATHING
CER	CERAMIC	JST	JOIST	SHT	SHEET
CFT	CERAMIC FLOOR TILE	KP	KICK PLATE	SLDG	SLIDING
CH	CHAIR RAIL	LAM	LAMINATED	SM	SMOOTH
CHN	CHANNEL	LAV	LAVATORY	SP	SAFETY PADDING
CHN	CAST IN PLACE	LB	LENGTH	SPEC	SPECIALTY CEILING
CJ	CONSTRUCTION JOINT	LG	LENGTH	SPEC	SPECIFICATION
CL	CENTER LINE	LIN	LINOLEUM	SPP	SPORTS FLOOR
CLS	CLOSET	LNC	LOCATION	SS	SQUARE
CLR	CLEAR	LVC	LOUVER	SSF	SOLID SURFACE
CM	CENTIMETER	LVT	LUXURY VINYL TILE	ST	STAINLESS STEEL
CMU	CONCRETE MASONRY UNIT	LWC	LIGHT WEIGHT CONCRETE	STC	STAINED CONCRETE
COL	COLUMN	M	METER	STD	STANDARD
CONC	CONCRETE	MAT	MATERIAL	STN	STONE
CONC	CONSTRUCTION	MAX	MAXIMUM	STRUC	STRUCTURE
CONT	CONTINUOUS	MB	MARKER BOARD	SUSP	SUSPENDED
CS	CERAMIC TILE	MECH	METAL CABINETS	SVB	SWITCHBOARD
CS	CONCRETE SEALER	MFR	MANUFACTURER		
CS	CULTURED STONE	MIN	MINIMUM		
CST	CERAMIC WALL TILE	MLDG	MOLDING	T	TREAD
		MO	MASONRY OPENING	TB	TACK BOARD
DW	DECORATIVE GLASS PANEL	MP	MOVABLE PARTITION	TC	TOP OF CURB
DSP	DIAMETER	MT	METAL TRIM	TCF	TEXTILE COMPOSITE FLOORING
DIA	DIAGONAL	MTB	METAL BASE	TO	TEMPERED GLASS
DIM	DIMENSION	MTL	METAL LATH	TO	TOP OF
DISP	DISPENSER	MTL LATH	METAL LATH	TP	TOILET PARTITION
DN	DOWN	MULL	MULLION	TRS	TRANSITION STRIP
DNP	DAMP PROOFING	NE	NO FINISH	TSO	TOP OF STEEL DECK
DPC	DYED AND POLISHED	NG	NATURAL GRADE	TURF	TURF
DR	CONCRETE	NIC	NOT IN CONTRACT	TW	TEACHERS WARDROBE
DS	DOWNSPOUT	NO / #	NUMBER	TYP	TYPICAL
DWG	DRAWING	NOM	NOMINAL	TZB	TERRAZZO BASE
		NTS	NOT TO SCALE	UNO	UNLESS NOTED OTHERWISE
EA	EACH	OBS	OBSOLETE	UP	UPHOLSTERY
ELEC	ELECTRIC	OC	OPENING	V	VENT
ELEV	ELEVATION	OPNG	OPENING	VCP	VITREOUS CLAY PIPE
EQ	EQUAL	OA	OVERALL	VCT	VINYL COMPOSITION TILE
EQU	EQUIPMENT	OFS	OVERFLOW SCUPPER	VG	VERTICAL GRAIN
ETR	EXISTING TO REMAIN	OD	OVERHEAD DOOR	VERT	VERTICAL
EWC	ELECTRIC WATER COOLER	OEG	OVERHEAD DOOR	VEST	VESTIBULE
EXH	EXHAUST	PBT	PORCELAIN BASE TILE	VEV	VINYL ENHANCED TILE
EXIST	EXISTING	PC	POLISHED CONCRETE	VOT	VINYL QUARTZ TILE
EXP	EXPANDED	PNT	PANT (A always stands for epoxy finish)	VWC	VINYL WALLCOVERING
EXPAN	EXPANSION	POT	PORCELAIN FLOOR TILE	WC	WALLCOVERING
EXT	EXTERIOR	PO	PAGE	WCT	WAINSCOT
FA	FIRE ALARM	PL	PROPERTY LINE	WD	WOOD
FACP	FIRE ALARM CONTROL PANEL	PLM	PLASTIC LAMINATE	WDB	WOOD BASE
FD	FLOOR DRAIN	PLBS	PLUMBING	WDC	WOOD CEILING
FEC	FIRE EXTINGUISHER CABINET	PLYWD	PLYWOOD	WDF	WOOD FLOOR
FH	FIRE HOSE CAB	PR	PAIR	WDP	WOOD PANELS
FIN	FINISH	PSF	POUNDS PER SQ FT	WDS	WOOD STAIR
FIX	FIXTURE	PSI	POUNDS PER SQ IN	WDV	WOOD VENEER
FL	FLASHING	PSTR	PLASTER	WDW	WINDOW
FLR	FLOOR	PTX	PAINT (No acronym after number always stands for eggshell finish)	WIF	WINDOW FILM
FND	FOUNDATION	PT-XA	PAINT (X always stands for epoxy finish)	WH	WALK OFF CARPET
FR	FRAME	PT-XB	PAINT (B always stands for semi-gloss finish)	WOC	WALK OFF MAT
FNP	FIBERGLASS REINFORCED	PT-XC	PAINT (C always stands for flat finish)	WOP	WALL GLASS SYSTEM
FT	FEET / FOOT	PT-XD	PAINT (D as needed per project if not listed above)	WPT	WINDOW TREATMENT
FTG	FOOTING	PWT	PORCELAIN WALL TILE	WW	WINDOW WALL
FV	FIELD VERIFY			WWM	WELDED WIRE MESH
FWP	FABRIC WALL PANEL			WV	WITH
				WVO	WITHOUT

### LOCATION PLAN



KEY PLAN  
1" = 160'-0"



\*THIS DRAWING IS INTENDED TO BE PRINTED IN COLOR. USE BLACK AND WHITE COPIES AT YOUR OWN RISK.

1 CODE PLAN  
3/32" = 1'-0"

### CODE FOOTPRINT LEGEND

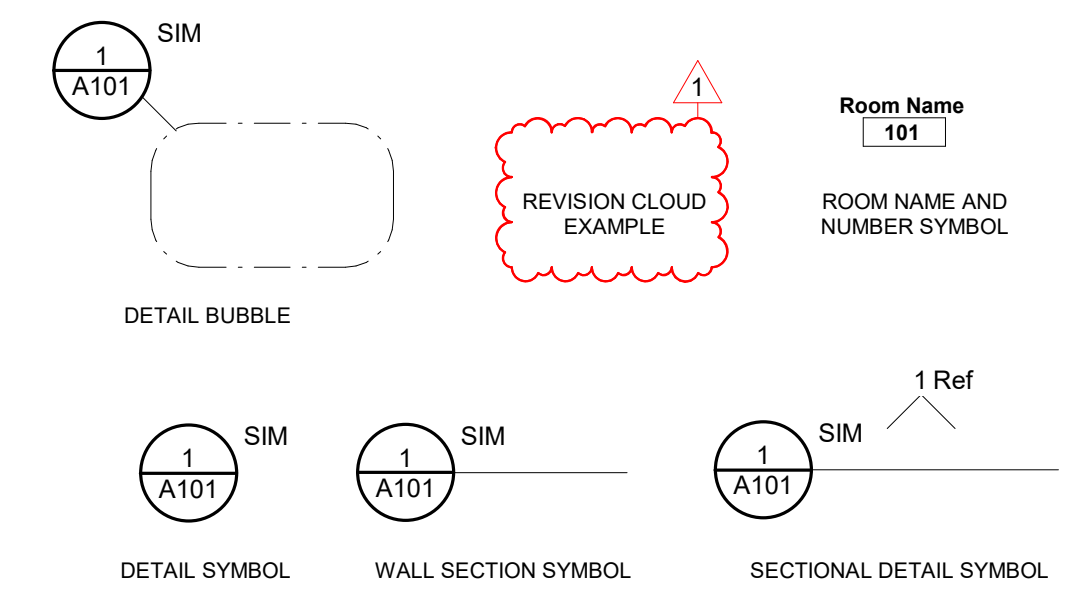
**PARTITION TYPES**  
0 HR SMOKE PARTITION (SMOKE RESISTIVE)  
2 HR FIRE BARRIER

**AREA DESIGNATIONS**  
CORRIDOR  
HAZARDOUS ROOM  
EXIT ENCLOSURE  
SHAFT

**SYMBOLS**  
FIRE EXIT  
OCCUPANT LOAD  
EXIT WIDTH PROVIDED  
EXIT WIDTH REQUIRED  
EXISTING FIRE EXTINGUISHER CABINET  
TRAVEL DISTANCE

### GENERAL NOTES

- ALL WORK SHALL BE PERFORMED IN ACCORDANCE WITH A.D.A. REQUIREMENTS AND ALL APPLICABLE LOCAL, STATE, AND FEDERAL BUILDING CODES AND REGULATIONS.
- THE CONTRACTOR IS RESPONSIBLE FOR OBTAINING ALL NECESSARY BUILDING PERMITS.
- THE GENERAL CONTRACTOR AND SUBCONTRACTORS SHALL FIELD VERIFY EXISTING CONDITIONS AND NOTIFY THE ARCHITECT OF ANY INCONSISTENCIES OR DISCREPANCIES WITH THE PROJECT DOCUMENTS. ACCESS TO THE SITE AND/OR SPACE UNDER CONSTRUCTION DURING BIDDING AND CONSTRUCTION SHALL BE COORDINATED WITH THE OWNER.
- DO NOT SCALE DRAWINGS.
- THE WORD "ALIGNED" AND "EQUAL" AS USED IN THESE DOCUMENTS SHALL SUPERSEDE ANY DIMENSIONAL INFORMATION GIVEN.
- TYPICAL DIMENSIONS ARE TO FACE OF CONCRETE, DRYWALL, CURTAIN WALL, ETC., OR TO COLUMN CENTERLINE. DIMENSIONS AT WINDOWS ARE TYPICALLY TO FACE OF FRAME. REFER TO PLAN DETAILS FOR ADDITIONAL INFORMATION.
- THE GENERAL CONTRACTOR SHALL BE RESPONSIBLE FOR EXAMINING AND CONFIRMING ALL SUBSTRATE CONDITIONS WHERE NEW MATERIALS ARE APPLIED. THE SUBSTRATE SHALL BE SMOOTH AND FREE OF DEFECTS AND SHALL CONFORM TO THE REQUIREMENTS OF THE FINISHED MATERIAL MANUFACTURERS.
- THE GENERAL CONTRACTOR SHALL BE RESPONSIBLE FOR CLEAN-UP.
- THE GENERAL CONTRACTOR SHALL INSPECT AND CHECK THE ADEQUACY AND INSTALLATION OF THROUGH-WALL FLASHING PRIOR TO COVERING WITH FINISH MATERIALS. THIS SHALL INCLUDE, BUT IS NOT LIMITED TO INSPECTION AGAINST HOLES OR PENETRATIONS, APPROPRIATE LAPPING AND SEALING, AND OVERALL WORKMANSHIP IN CONFORMANCE WITH THE SPECIFICATIONS.



SYMBOLS  
1/4" = 1'-0"

### CODE SUMMARY

**PROJECT CONSTRUCTION PURPOSE:** NEW CLINIC LOCATING IN EXISTING CLINIC SPACE

**OWNER:**  
SAINT LUKE'S EAST HOSPITAL  
100 NE SAINT LUKE'S BOULEVARD  
LEE'S SUMMIT, MO 64086  
MEDICAL OFFICE BUILDING SUITE 300

**DESIGNER:**  
ACI BOLAND ARCHITECTS  
1710 WYANDOTTE ST.  
KANSAS CITY, MO 64108  
PHONE: (816) 763-9600

**LOCAL AUTHORITY:**  
RESPONDING FIRE SERVICE: LEE'S SUMMIT FIRE DEPARTMENT  
LOCAL BUILDING INSPECTION: LEE'S SUMMIT, MO-CODES ADMINISTRATION DEPARTMENT

**CODE INFORMATION:**  
2018 INTERNATIONAL BUILDING CODE  
2018 INTERNATIONAL PLUMBING CODE  
2018 INTERNATIONAL MECHANICAL CODE  
2017 NATIONAL ELECTRICAL CODE (NFPA 70)  
2018 INTERNATIONAL FIRE CODE  
2012 LIFE SAFETY CODE (NFPA 101 CHAPTER 20)  
2003 (ICANS) A117.1 AS AMENDED AND ADOPTED BY THE CITY OF LEE'S SUMMIT  
2010 ADA STANDARDS FOR ACCESSIBLE DESIGN / AMERICANS WITH DISABILITIES ACT OF 1990

STATE OF MISSOURI DEPT. OF HEALTH & ENVIRONMENT REFERENCES THE FOLLOWING CODES:  
2012 NFPA 101 LIFE SAFETY CODE (LSC)  
NOTE: IF CODE REQUIREMENTS OVERLAP, THE MOST STRINGENT SHALL APPLY.

**TYPE OF CONSTRUCTION:**  
TYPE 1-A - SECTION 602.2 (TYPE 1 - 332 SPRINKLERED - SECTION 18.1.6.1)  
B - BUSINESS - PROFESSIONAL SERVICES

**OCCUPANCY GROUP:**  
NO CHANGE IN OCCUPANT LOAD

**DEAD END CORRIDOR LENGTH LIMIT:**  
50' - FULLY SPRINKLED

**EXIT ACCESS TRAVEL DISTANCE:**  
200'

**AREA OF CONSTRUCTION:**  
550 +/- SF

**REQUIRED FIRE RESISTANCE RATINGS (IN HOURS):**  
PER NFPA 101 A.8.2.1.2:

EXTERIOR BEARING WALLS	3 HR
INTERIOR BEARING WALLS	3 HR
PRIMARY STRUCTURAL FRAME	3 HR
FLOOR CONSTRUCTION	2 HR
ROOF CONSTRUCTION	1 1/2 HR
INTERIOR NON-BEARING WALLS	0 HR

**PLUMBING FIXTURE CALCULATIONS:**  
EXISTING TO REMAIN

**ACTIVE FIRE SAFETY FEATURES:**  
- FIRE ALARM SYSTEM - THE FIRE ALARM SYSTEM IS SPECIFIED AS AN ADDRESSABLE TYPE SYSTEM. THE DEVICE TYPE AND LOCATIONS ARE PER THE APPLICABLE CODES AS WELL AS A.D.A. REQUIREMENTS.  
- SMOKE CONTROL SYSTEM - ALL DUCTWORK PENETRATING SMOKE RATED WALLS WILL HAVE A SMOKE OR COMBINATION FIRE/SMOKE DAMPER AS INDICATED ON CONSTRUCTION DOCUMENTS. THESE DAMPERS WILL CLOSE UPON DETECTION OF SMOKE BY THE AREA SMOKE DETECTORS OR DUCT SMOKE DETECTORS IN THE AIR HANDLING UNITS.  
- FIRE SPRINKLER SYSTEM - SPECIFIED TO BE PER NFPA 13. THE SPRINKLER HEADS ARE SPECIFIED TO BE QUICK RESPONSE TYPE.  
- EMERGENCY LIGHTING AND POWER - EMERGENCY LIGHTING, LIFE SAFETY AND CRITICAL LOADS WILL RECEIVE POWER FROM A BACKUP GENERATOR LOCATED OUTSIDE THE MAIN ELECTRICAL ROOM.  
- ILLUMINATED EXIT SIGNS

**PASSIVE FIRE SAFETY FEATURES:**  
- SMOKE COMPARTMENTS NO GREATER THAN 22,500 SF

### SHEET INDEX

SHEET NUMBER	SHEET NAME
GENERAL A000	COVER SHEET
ARCHITECTURE A211	OVERALL FIRST FLOOR PLAN
PLUMBING P000 P200	PLUMBING COVERSHEET LEVEL 02 AND 03 - PLUMBING
ELECTRICAL E000 E200	ELECTRICAL COVERSHEET LEVEL 03 PLAN - ELECTRICAL

### FFE SCHEDULE

TYPE MARK	DESCRIPTION	RESPONSIBILITY	COMMENTS
	W/SHOP		
	FURNITURE SYSTEMS	VFVI	BLOCKING AS REQUIRED
AS075	DISPENSER, SOAP	OFOI	BLOCKING AS REQUIRED
AS077	HAND SANITIZER	OFOI	BLOCKING AS REQUIRED
AS082	PAPER TOWEL	OFOI	BLOCKING AS REQUIRED
AS107	GLOVE DISPENSER, 3 HOLE	OFOI	BLOCKING AS REQUIRED
AS108	SHARPS CONTAINER	OFOI	BLOCKING AS REQUIRED
F0205	SIDE CHAIR, W/ ARMS	OFOI	
F0206	CHAIR, FOLDING, WALL MOUNTED		BLOCKING AS REQUIRED
F0301	CHAIR, TASK, SWIVEL, W/ ARMS	OFOI	
F2010	14 LITER STEP TRASHCAN	OFOI	
M1803a	WORKSTATION, WALL MOUNTED	OFOI	BLOCKING AS REQUIRED
M0205	EXAM TABLE	OFOI	



8/29/2025 03:27:15 PM

**ACI BOLAND ARCHITECTS**

ACI/Boland, Inc.  
Kansas City | St. Louis  
1710 Wyandotte  
Kansas City, MO 64108  
T: 816.763.9600  
Licensee's Certificate of Authority Number:  
Missouri: #000958

### MEP CONSULTANT

IMEG  
1600 Baltimore Ave, Suite 300  
Kansas City, MO 64108  
816.842.8437  
Licensee's Certificate of Authority Number:  
#00127265

SAINT LUKE'S EAST HOSPITAL  
SUITE 300 REMODEL  
20 NE SAINT LUKE'S BLVD.  
LEE'S SUMMIT, MO 64086

Date 09.02.2025  
Job Number 3-25069  
Drawn By BRD  
Checked By AD

Revision  
Number Date Description

A000

COVER SHEET







LUMINAIRE SCHEDULE										
A#	DESCRIPTION	OPTICS	MTG	DIMENSIONS	LIGHT SOURCE	DELIVERED LUMENS	WATTS	POWER SUPPLY	MANUFACTURER - SERIES	NOTES
3	SHALLOW PLENUM TROFFER WITH CENTER DIFFUSE LINEAR RIBBED ACRYLIC LENS, STEEL HOUSING, PAF		RE	48"L X 24"W X 2 3/8"H	LED, 3500K CCT, 80 CRI	5,078 lm	37 / FIX	277 0-10V/1%	HE WILLIAMS - PT SERIES (L49)	1
B	SHALLOW PLENUM TROFFER WITH CENTER DIFFUSE RIBBED ACRYLIC LENS, STEEL HOUSING, PAF		RE	24"L X 24"W X 2 3/8"H	LED, 3500K CCT, 80 CRI	2,924 lm	22 / FIX	277 0-10V/1%	HE WILLIAMS - PT SERIES (L26)	1

LUMINAIRE SCHEDULE NOTES:  
1. BASE BID - EXISTING LIGHT FIXTURES TO REMAIN. ALTERNATE BID - EXISTING LIGHT FIXTURES TO BE REMOVED. PROVIDE NEW LIGHT FIXTURES AS INDICATED.

LUMINAIRE SCHEDULE LEGEND				
DESCRIPTION:				
PAF - PAINT AFTER FABRICATION				
CFSA - COLOR FINISH SELECTION BY ARCHITECT				
CCFSA - CUSTOM COLOR FINISH SELECTED BY ARCHITECT				
CONFIRM ALL COLORS AND FINISHES OF ALL LUMINAIRE COMPONENTS WITH ARCHITECT AND INTERIOR DESIGNER PRIOR TO THE RELEASE OF THE LUMINAIRE ORDER				
OPTICS:				
BEAM ANGLE				
##° or ## DEG - BEAM ANGLE IN DEGREES				
VNSP - VERY NARROW SPOT	NFL - NARROW FLOOD			
NSP - NARROW SPOT	FL - FLOOD			
SP - SPOT	WFL - WIDE FLOOD			
WSP - WIDE SPOT	VWF - VERY WIDE FLOOD			
VWSP - VERY WIDE SPOT				
MOUNTING (MTG):				
CL - CEILING	P - PERIMETER	SU - SURFACE		
CV - COVE	PL - POLE	UC - UNDER CABINET		
G - GROUND SURFACE	RE - RECESSED	WL - WALL		
IG - IN GRADE	SP - SUSPENDED	O - OTHER (SEE DESCRIPTION)		
VERIFY AND COORDINATE ALL CEILING TYPES WITH LUMINAIRE MOUNTING AND TRIM REQUIREMENTS. REFER TO ARCHITECTURAL AND INTERIOR DESIGN ELEVATIONS, SECTIONS, AND DETAILS FOR LUMINAIRE MOUNTING LOCATIONS AND REQUIREMENTS.				
MOUNTING HEIGHTS INDICATED IN THE SCHEDULE ARE TO THE BOTTOM OF FIXTURE UNLESS NOTED OTHERWISE.				
DIMENSIONS:				
L - LENGTH	W - WIDTH	H - HEIGHT	D - DEPTH	Ø - DIAMETER
VAR. - DIMENSION VARIES. SEE ARCHITECTURAL PLANS.				
LIGHT SOURCE:				
SOURCE TYPE	LED - INTEGRAL LIGHT EMITTING DIODE DLED - DYNAMIC TUNABLE WHITE LED RLED - RETROFIT LED LAMP WLED - WARM DIM LED			
CCT / CRI	INTERIOR CORRELATED COLOR TEMPERATURE [2700, 3000, 3500, 4000/4100]K, COLOR RENDERING INDEX (CRI) AT OR ABOVE [80, 85, 90], UNLESS NOTED OTHERWISE. EXTERIOR CORRELATED COLOR TEMPERATURE [2700, 3000, 3500, 4000/4100]K, COLOR RENDERING INDEX (CRI) AT OR ABOVE [80, 85, 90], UNLESS NOTED OTHERWISE.			
DELIVERED LUMENS:				
LUMENS INDICATED ARE MINIMUM INITIAL DELIVERED LUMENS AT SPECIFIED CCT AND CRI.				
WATTS:				
MAXIMUM ANSI WATTS PER: (BLANK) = PER LUMINAIRE FT = LINEAR FOOT LAMP POLE				
POWER SUPPLY:				
PS TYPE	(BLANK) - INTEGRAL UNLESS NOTED OTHERWISE REM - REMOTE EM - EMERGENCY BATTERY			
CONTROL METHOD	0-10V - 0 TO 10V DIMMING 10% 1% 0.1% 0.01% AS INDICATED DALI - DIGITAL ADDRESSABLE LIGHTING INTERFACE (IEC 62386) DMX - USITT DMX512-A (ANSI E1.11) UPC - UNIVERSAL PHASE CONTROL DIMMING (PHASE ADAPTIVE) SWC - SWITCHED CONTROL O - OTHER (SEE DESCRIPTION)			
COORDINATE LUMINAIRE DRIVER DIMMING METHODS AND PROTOCOLS WITH THE LIGHTING CONTROL SYSTEM AND CONTROL MANUFACTURER REQUIREMENTS TO ENSURE DIMMING COMPATIBILITY.				
MANUFACTURER - SERIES:				
1. THE MANUFACTURER AND MODEL LISTED IS THE BASIS OF DESIGN. 2. THE MODEL NUMBER SHOWN SHALL NOT BE CONSIDERED COMPLETE AND MATERIAL SHALL NOT BE ORDERED BY MANUFACTURER AND MODEL NUMBER ONLY. THE COMPLETE DESCRIPTION AND THE SPECIFICATION SHALL BE COORDINATED WITH THE MODEL NUMBER TO DETERMINE THE EXACT MATERIAL AND ACCESSORIES TO BE ORDERED.				

ELECTRICAL SYMBOL LIST			
SYMBOL:	TAG:	SPEC SECTION:	DESCRIPTION:
			LINEAR LUMINAIRES
			TROFFER
			WALL SCONCE LUMINAIRE
			DOWNLIGHT LUMINAIRE
			AIMABLE OR WALL WASH LUMINAIRE
			INDUSTRIAL LUMINAIRE
			WALL BRACKET LUMINAIRE
			POLE MOUNTED LUMINAIRE
			SINGLE FACE EXIT SIGN
			DOUBLE FACE EXIT SIGN
			WALL/CEILING EMERGENCY EXIT SIGN
			EMERGENCY UNIT

LUMINAIRE CIRCUIT AND CONTROL KEY	
	E1 = FIXTURE TAG 1 = CIRCUIT NUMBER a = SWITCH DESIGNATION z1 = ZONE DESIGNATION "N1" INDICATES LUMINAIRE IS UNSWITCHED FOR NIGHT LIGHT "SE" INDICATES LUMINAIRE IS SWITCHED/CONTROLLED DURING NORMAL OPERATION AND OPERATES FROM [EMERGENCY BATTERY (EXTEND UNSWITCHED CIRCUIT LEG TO BATTERY)] [EMERGENCY CIRCUIT] UPON LOSS OF POWER
*IF LABEL IS ORIENTED HORIZONTALLY A SLASH WILL SEPARATE THIS INFORMATION. EX: F1 / 1 / a / NL	

LUMINAIRE SHADING KEY	
	NORMAL BRANCH LUMINAIRE
	EMERGENCY BRANCH LUMINAIRE
SHADED LUMINAIRE INDICATES LUMINAIRE IS CONNECTED TO AN EMERGENCY CIRCUIT.	

FIRE / SMOKE BARRIER DESIGNATIONS	
FIRE AND SMOKE SEPARATIONS ARE NOT SHOWN ON THESE DOCUMENTS. CONTRACTOR SHALL REVIEW THE ARCHITECTURAL PLANS AND DETERMINE THE LOCATIONS OF ALL FIRE AND SMOKE PARTITIONS, BARRIERS, AND WALLS. THIS INCLUDES FLOOR RATINGS. PRICING SHALL INCLUDE ALL MATERIALS AND LABOR REQUIRED TO MAINTAIN THE RATINGS OF ALL RATED SEPARATIONS, WHETHER SHOWN ON THE ENGINEERING PLANS OR NOT.	

ELECTRICAL ABBREVIATION KEY	
ABBR:	DESCRIPTION:
ABV	ABOVE
AFC	ABOVE FINISHED CEILING
AFF	ABOVE FINISHED FLOOR
AFG	ABOVE FINISHED GRADE
ASR	ARCHITECTURAL SURFACE RACEWAY
BC	BELOW COUNTER
C	CONDUIT (BRANCH CIRCUIT OR FEEDER CONTEXT)
CG	CONDUIT AND BOX ROUGH-IN ONLY (ROUGH-IN ONLY)
EO	EQUIPMENT GROUND
EGC	EQUIPMENT GROUNDING CONDUCTOR
EOL	END OF LINE
EPO	EMERGENCY POWER OFF
GFR	GROUND FAULT REMOTE
HOA	HAND/OFF/AUTO
ITR	IT RACK MOUNTED RECEPTACLE
N	NEW DEVICE IN EXISTING OUTLET BOX
NC	NORMALLY CLOSED
NEMA #	NEMA RATING
NIC	NOT IN CONTRACTED SCOPE
NO	NORMALLY OPEN
RN	EXISTING DEVICE TO BE REMOVED AND OUTLET BOX REUSED FOR NEW DEVICE
ROOF	EQUIPMENT LOCATED ON ROOF ABOVE
SM	SURFACE MOUNTED
TYP	TYPICAL
UG	UNDERGROUND
UON	UNLESS OTHERWISE NOTED

ELECTRICAL PHASING NOTES:	
THESE NOTES APPLY TO ALL ELECTRICAL SHEETS AND TRADES, INCLUDING BUT NOT LIMITED TO, LIGHTING, POWER, FIRE ALARM, AND OTHER LOW VOLTAGE SYSTEMS. 1. REFER TO ARCHITECTURAL DRAWINGS FOR GENERAL DESCRIPTION OF PHASES. REFER TO CONSTRUCTION MANAGER'S/GENERAL CONTRACTOR'S/ARCHITECT'S INSTRUCTIONS FOR MORE DETAILS AND PHASING SCHEDULES AND FOR CONCURRENT WORK. MECHANICAL ELECTRICAL AND TECHNOLOGY DRAWINGS DEPICT THE INTENT OF THE FINAL DESIGN. THE MECHANICAL, ELECTRICAL, AND TECHNOLOGY DRAWINGS DO NOT DEPICT THE MEANS AND METHODS TO MEET THE REQUIREMENTS OF THE PHASING CRITERIA. 2. REVIEW PROJECT PHASING PLANS TO COORDINATE DEMOLITION WORK, OUTAGES, ETC. WITH AFFECTED ADJACENT AREAS. 3. PROVIDE TEMPORARY LIGHTING, POWER, SYSTEMS, ETC. AS NEEDED TO MAINTAIN SERVICE TO ALL PHASES DURING ALL PHASES OF PROJECT. 4. INSTALL TEMPORARY LIGHTING, CIRCUITS, ETC. AS NECESSARY TO KEEP ALL OCCUPIED SPACES OPERATIONAL THROUGHOUT ALL PHASES OF THE PROJECT 5. PHASE DEMOLITION WORK TO MINIMIZE DOWNTIME.	

RECEPTACLE SUBSCRIPT KEY:	
DEVICE KEY:	# = MOUNTING (IF APPLICABLE) 1 = CIRCUIT NUMBER
*IF LABEL IS ORIENTED HORIZONTALLY A SLASH WILL SEPARATE THIS INFORMATION. EX: A / 1	
ELECTRICAL MOUNTING SUBSCRIPT KEY:	
A	MOUNT AT +6" TO CENTERLINE ABOVE COUNTER OR BACKSPLASH
C	MOUNT AT CEILING (DEVICE OR ROUGH-IN CONTEXT)
H	MOUNT ORIENTED HORIZONTALLY
L	MOUNT IN CASEWORK
M	MOUNT IN MODULAR FURNITURE
R	MOUNT IN SURFACE RACEWAY
SM	SURFACE MOUNTED
WG	WIRE GUARD
+6"	MOUNT AT 6" TO CENTERLINE ABOVE FINISHED FLOOR
SHADED DEVICE INDICATES DEVICE IS CONNECTED TO AN EMERGENCY CIRCUIT.	
DEVICE	

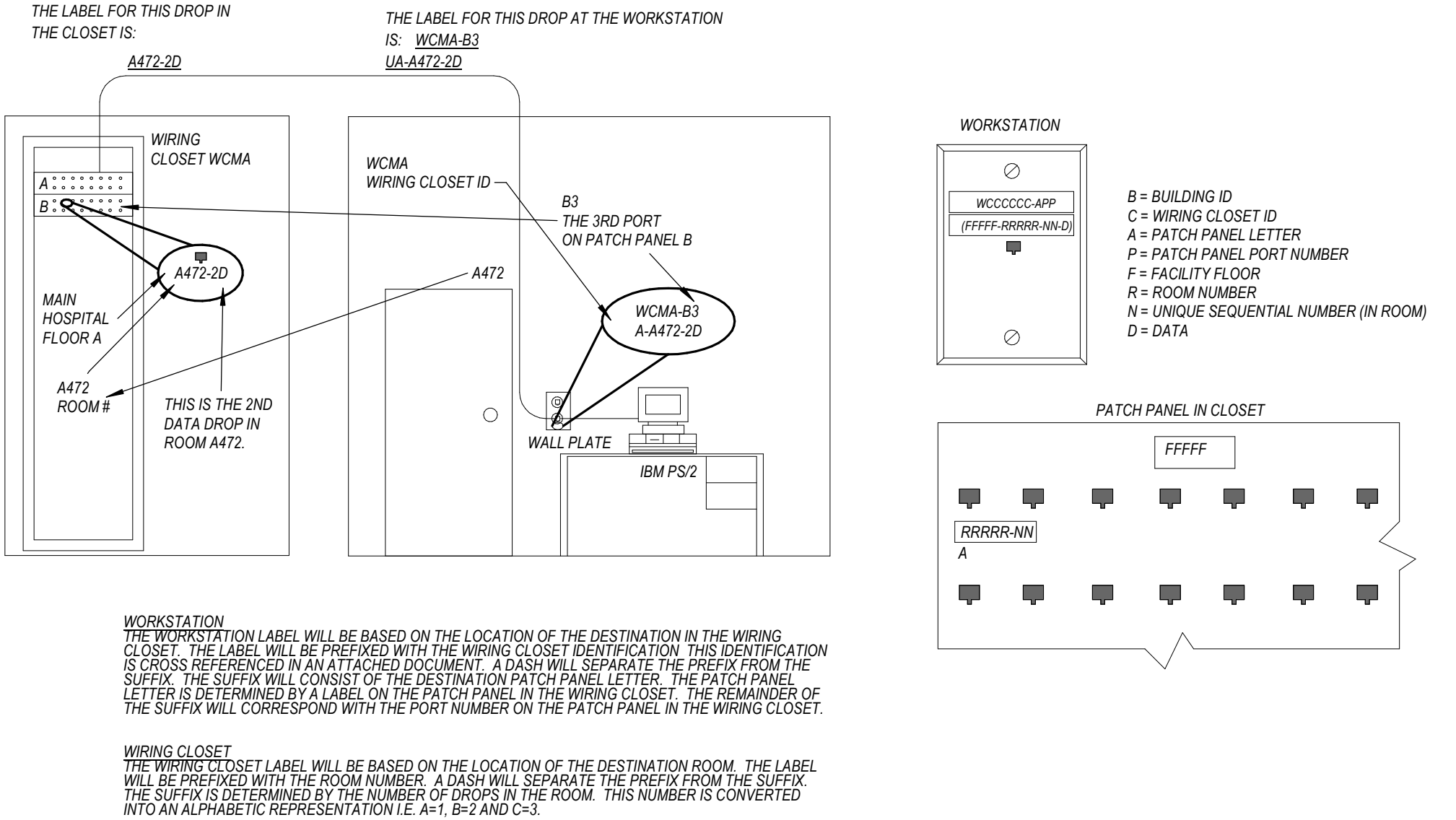
ELECTRICAL SYMBOL LIST - RECEPTACLES	
SYMBOL	DESCRIPTION
	DUPLEX RECEPTACLE, 125V
	DUPLEX RECEPTACLE, GROUND FAULT CIRCUIT INTERRUPTING, 125V
	QUAD RECEPTACLE, 125V

ELECTRICAL SYMBOL LIST - POWER	
SYMBOL	DESCRIPTION
	JUNCTION BOX - WALL
	ELECTRICAL POKE THROUGH
	PANELBOARD - SURFACE MOUNT

ELECTRICAL SYMBOL LIST - FIRE ALARM		
SYMBOL	TAG	DESCRIPTION
	#	SMOKE DETECTOR - PHOTOELECTRIC, CEILING MOUNT
	#	VISUAL ALARM DEVICE, WALL MOUNTED
	#	COMBINATION AUDIO (HORN/CHIME) AND VISUAL ALARM DEVICE, WALL MOUNTED

ELECTRICAL SYMBOL LIST - LIGHTING CONTROLS		
SYMBOL	TAG	DESCRIPTION
	S	SWITCH - SINGLE POLE
	D	LED DIMMER, 0-10 VOLT, COMPATIBLE WITH FIXTURE DRIVER, WATTS/TOPIPER - #RH4FB3.3PTC SERIES

TECH. ROUGH-IN AND CABLE SYMBOL LIST		
SYMBOL	TAG	DESCRIPTION
	C#	INFORMATION OUTLET (WALL)
	C2	INFORMATION OUTLET CABLE QUANTITY
	▽	INFORMATION OUTLET (WALL) EXISTING



# 1 TYPICAL SLHS DATA CABLE LABELING STANDARD

NO SCALE

ELECTRICAL INSTALLATION NOTES:	
1. THE COMPLETE INSTALLATION SHALL BE IN ACCORDANCE WITH THE ADA STANDARDS FOR ACCESSIBLE DESIGN. REFER TO THE ADA GUIDELINES FOR ALL CONFIGURATION DETAILS ON THIS PAGE FOR ADDITIONAL INFORMATION. 2. CIRCUIT NUMBERS ARE SHOWN FOR CIRCUIT IDENTIFICATION. CIRCUITING SHALL AGREE WITH NUMBERING ON THE PANEL PROVIDED. COMMON NEUTRALS MAY NOT BE USED FOR BRANCH CIRCUITS. BALANCE THE LOAD ON PANEL AS EVENLY AS POSSIBLE BETWEEN EACH PHASE. 3. EMERGENCY LIFE SAFETY AND CRITICAL EQUIPMENT BRANCH WIRING FOR FEEDERS AND BRANCH CIRCUITS SHALL BE ROUTED IN SEPARATE RACEWAY, JUNCTION BOXES, PULL BOXES, AND CABINETS. WIRING FOR EACH BRANCH SHALL BE INDEPENDENT FROM OTHER BRANCHES, INCLUDING THE NORMAL BRANCH. 4. FLUSH MOUNT ALL LIGHTING CONTROL DEVICES AT +42" FROM FLOOR (CENTERLINE DIMENSION), EXCEPT WHERE OTHERWISE NOTED. DEVICES MAY BE SURFACE MOUNTED WHEN CONDUIT IS SPECIFIED EXPOSED. 5. FLUSH MOUNT ALL DUPLEX RECEPTACLES AND TECHNOLOGY OUTLETS AT +18" FROM FLOOR (CENTERLINE DIMENSION), EXCEPT WHERE OTHERWISE NOTED. RECEPTACLES AND OUTLETS MAY BE SURFACE MOUNTED WHEN CONDUIT IS SPECIFIED EXPOSED. 6. ALL MATERIALS USED TO SEAL PENETRATIONS OF FIRE RATED WALLS AND FLOORS SHALL BE TESTED AND CERTIFIED AS A SYSTEM PER ASTM E814 STANDARDS FOR FIRE TESTS OF THROUGH-PENETRATION FIRESTOPPERS. REFER TO ARCHITECTURAL SPECIFICATIONS FOR ADDITIONAL INFORMATION AND REQUIREMENTS SPECIFIC TO FIRESTOPPING. 7. CONNECTION FOR ELECTRIC WATER COOLERS (EWC) SHALL BE A JUNCTION BOX CONCEALED BEHIND WATER COOLER ACCESS PLATE OR BE A GFI RECEPTACLE LOCATED DIRECTLY BELOW AND CENTERED ON EWC. CONTRACTOR SHALL VERIFY TYPE OF EWC TO BE INSTALLED. 8. MOUNT ALL FIRE ALARM PULL STATIONS AT +42" FROM FLOOR (CENTERLINE DIMENSION) EXCEPT WHERE OTHERWISE NOTED. 9. INSTALL ALL WALL MOUNTED FIRE ALARM NOTIFICATION DEVICES AT 80" ABOVE FINISHED FLOOR OR 6" BELOW THE CEILING, WHICHEVER IS LOWER, EXCEPT WHERE OTHERWISE NOTED. HEIGHT SHALL BE MEASURED TO THE TOP OF THE DEVICE. 10. CONTRACTOR SHALL COORDINATE THE LOCATION OF ALL CEILING MOUNTED DEVICES AND EQUIPMENT WITH LUMINAIRES, SPRINKLER, AND CEILING DIFFUSERS. CENTER ALL DEVICES IN CEILING TILE PATTERN. SMOKE DETECTORS AND OCCUPANCY/VACANCY SENSORS SHALL BE LOCATED NO CLOSER THAN 3 FEET TO AN AIR SUPPLY DIFFUSER OR RETURN GRILLE. 11. CONTRACTOR SHALL VERIFY ALL FURNITURE, MODULAR FURNITURE, AND EQUIPMENT LOCATIONS WITH ARCHITECTURAL PLANS, ELEVATIONS, AND REVIEWED SHOP DRAWINGS. PRIOR TO MAKING THE ACTUAL ELECTRICAL INSTALLATION, THIS CONTRACTOR SHALL ADJUST RECEPTACLES, OUTLETS, OR CONNECTION LOCATIONS TO ACCOMMODATE FURNITURE AND/OR EQUIPMENT. 12. ELECTRICAL AND TECHNOLOGY EQUIPMENT SHALL BE MOUNTED TO AVOID IMPEDANCE OF, RIGHT TO REQUIRE QUALIFYING AND ACCESS TO ELECTRICAL AND MECHANICAL EQUIPMENT. ALL MOUNTING OF ELECTRICAL AND TELECOMMUNICATIONS EQUIPMENT, ON EQUIPMENT SUPPLIED BY ANOTHER CONTRACTOR, SHALL BE APPROVED IN ADVANCE BY THE OTHER CONTRACTOR. 13. CONTRACTOR SHALL BE RESPONSIBLE FOR ALL OPENINGS REQUIRED IN WALLS. ALL OPENINGS SHALL BE PREPARED BY A QUALIFIED EXISTING BY A QUALIFIED CONTRACTOR AT THE EXPENSE OF THIS CONTRACTOR. ALL CONDUITS THROUGH WALLS SHALL BE GROUTED OR SEALED INTO OPENINGS. 14. ALL WELDING SHALL BE ACCORDING TO AMERICAN WELDING SOCIETY STANDARDS. CONTRACTOR SHALL FURNISH TO THE ARCHITECT/ENGINEER CERTIFICATES QUALIFYING EACH WELDER, PRIOR TO START OF WORK. THE ARCHITECT/ENGINEER RESERVES THE RIGHT TO REQUIRE QUALIFYING DEMONSTRATION, AT THE CONTRACTOR'S EXPENSE, OF ANY WELDERS ASSIGNED TO THE JOB. 15. REFER TO ARCHITECTURAL REFLECTED CEILING PLAN, ELECTRICAL, TECHNOLOGY AUDIO/VISUAL, AND OTHER ELECTRICAL PLANS FOR EXACT LOCATIONS OF ALL CEILING MOUNTED DEVICES, OTHER THAN SPRINKLERS. 16. ALL EXISTING BRANCH CIRCUITS REQUIRE FIELD VERIFICATION AND SHALL BE TRACED FROM SOURCE PANEL TO EXISTING DEVICES AND EQUIPMENT REQUIRED TO REMAIN OR RELOCATE. UTILIZE INFORMATION TO PROVIDE ACCURATE UPDATED TYPE-WRITTEN PANEL SCHEDULES. 17. ALL ELECTRICAL WORK SHALL COMPLY WITH NEC 2017 ARTICLE 517 FOR HEALTHCARE FACILITIES. 18. CONTRACTOR SHALL FIELD VERIFY ALL EXISTING SITE CONDITIONS PRIOR TO BEGINNING ANY WORK. 19. THE OWNER SHALL HAVE FIRST RIGHT OF REFUSAL ON ALL EQUIPMENT BEING REMOVED. ALL EQUIPMENT DESIGNATED BY OWNER TO BE RETAINED IS TO BE REMOVED IN GOOD CONDITION, LABELED, BOXED AND DELIVERED TO OWNER. 20. MINIMUM CONDUIT SIZE SHALL BE 3/4" NOMINAL UNLESS NOTED OTHERWISE. 21. PROTECT ALL EXISTING SITE UTILITIES REQUIRED TO REMAIN IN OPERATION AND AS REQUIRED FOR JOB SITE SAFETY. ANY DEVIATIONS FOUND SHALL BE MADE KNOWN TO THE ARCHITECT PRIOR TO WORK COMMENCING. COMMENCEMENT OF WORK INDICATES ACCEPTANCE OF DRAWINGS AND SITE CONDITIONS. 22. COORDINATE ALL TRADES, OFFSET TRADES, LIGHTS, RECEPTACLES AND CONDUIT AS REQUIRED. APPROVAL MUST BE OBTAINED FROM ARCHITECT PRIOR TO OFFSETTING ANY DEVICE OR EQUIPMENT. 23. CONTRACTOR SHALL RELABEL AND UPDATE SCHEDULES IN ALL REPLACED AND EXISTING TO REMAIN PANELBOARDS AND DISTRIBUTION PANELS AT THE COMPLETION OF THE PROJECT. 24. AFTER COMPLETION OF NEW WORK, REMOVE ALL TEMPORARY EQUIPMENT, CONDUIT, AND WIRING NOT REQUIRED TO REMAIN. 25. CONTRACTOR SHALL ENSURE THAT ALL PENETRATIONS IN FLOORS, WALLS AND CEILINGS THAT ARE ABANDONED OR LEFT UNUSED BECAUSE OF DEMOLITION, ARE FILLED WITH RATED MATERIAL TO MEET THE DESIGNATED CODE REQUIREMENTS. FIRE-STOPPING REQUIRED AT ALL FIREWALL CONDUIT AND/OR CABLE PENETRATIONS. REFER TO SPECIFICATIONS FOR ADDITIONAL INFORMATION. 26. ALL GFI DUPLEX RECEPTACLES SHALL BE CONNECTED DOWNSTREAM ON ALL SHARED BRANCH CIRCUITS HAVING GENERAL DUPLEX RECEPTACLES. 27. ALL EMPTY CONDUITS INDICATED SHALL BE FURNISHED AND INSTALLED WITH PULLWIRES AND INSULATED BUSBARS. 28. VERIFY ALL OUTLETS, J-BOXES, PULLBOXES AND LIGHTING LOCATIONS AND MOUNTING HEIGHTS WITH ARCHITECTURAL CASEWORK AND REFLECTED CEILING PLANS, INCLUDING OWNER FURNISHED EQUIPMENT AND/OR FURNITURE, PRIOR TO ROUGH-IN. 29. ALL OUTLET BOXES SHALL BE PROVIDED AS FLUSH MOUNTING HAVING CONDUIT CONCEALED IN CONSTRUCTION AS REQUIRED, UNLESS NOTED OTHERWISE. ALL BOXES UTILIZED SHALL BE COMPATIBLE WITH ALL WALL CONSTRUCTION. PROVISION SHALL BE MADE FOR "SHALLOW-TYPE" AND "STANDARD" OUTLET BOXES AS REQUIRED FOR FLUSH INSTALLATION. 30. ALL CONDUIT SHALL BE CONCEALED IN CONSTRUCTION IN FINISHED AREAS. EXPOSED CONDUIT SHALL BE ROUTED AT BUILDING STRUCTURE ABOVE AT CEILING, THEN DROP TO EACH FIXTURE OR DEVICE LOCATION INDICATED AS DIRECTED BY ARCHITECT. 31. FOR PURPOSES OF VOLTAGE DROP, PROVIDE #10 WIRE FOR 120 VOLT BRANCH CIRCUIT HOMERUN BEYOND 70 FT FROM SOURCE PANEL AND #8 WIRE FOR 120 VOLT BRANCH CIRCUIT HOMERUNS BEYOND 120 FT FROM SOURCE PANEL. 32. VERIFY EXACT LOCATION AND CONNECTION REQUIREMENTS OF ALL HVAC, HVAC CONTROL PLUMBING, FIRE ALARM, FIRE PROTECTION, I.T., SECURITY, COMMUNICATIONS AND OWNER FURNISHED EQUIPMENT PER EQUIPMENT MANUFACTURER INSTRUCTIONS AND COORDINATE WITH ASSOCIATED EQUIPMENT CONTRACTORS. PROVIDE ALL NECESSARY DEVICES AND CONNECTIONS AS REQUIRED. 33. ALL EXISTING EQUIPMENT, CONDUIT AND WIRING SHOWN LIGHTLY AND NOTED ARE EXISTING TO REMAIN AND SHALL BE PROTECTED FROM DAMAGE DURING CONSTRUCTION. ALL EXISTING EQUIPMENT, CONDUIT AND WIRING SHOWN DARK AND DASHED TO BE REMOVED BY ELECTRICAL CONTRACTOR UNLESS NOTED OTHERWISE. 34. ALL EQUIPMENT, CONDUIT AND WIRING SHOWN DARK AND SOLID IS NEW WORK TO BE FURNISHED AND INSTALLED BY ELECTRICAL CONTRACTOR. 35. IN EXISTING RENOVATED FINISHED AREAS WHERE NEW CONDUIT AND WIRING ARE NOT ABLE TO BE INSTALLED CONCEALED IN CONSTRUCTION, FURNISH AND INSTALL SURFACE MOUNTED RACEWAY AS MANUFACTURED BY LEGRAND/WIREMOLD, OR APPROVED EQUIVALENT. RACEWAY SIZE AND USAGE SHALL BE KEPT TO A MINIMUM. VERIFY EXISTING CONDITIONS AND COORDINATE WITH ARCHITECT PRIOR TO ROUGH-IN. 36. PROVIDE NEW BREAKERS IN EXISTING PANELBOARDS, IF REQUIRED. MATCH RATINGS AND MATE WITH EXISTING SIZE, IF REQUIRED. 37. UPON COMPLETION OF DEMOLITION WORK, CONFIRM QUANTITIES OF "SPARE" 20 AMP, 1-POLE BREAKERS IN EXISTING 120 AND 277 VOLT PANELS FOR REUSE IN NEW WORK. PROVIDE LIST TO ARCHITECT AND ENGINEER FOR REVIEW, PRIOR TO ROUGH-IN. 38. EXISTING PANELBOARDS TO REMAIN, ASSOCIATED EXISTING BRANCH CIRCUITS TO BE TRACED AND VERIFIED FOR REMOVAL TO REMAIN AND/OR TO BE EXTENDED/RE-ROUTED. PROVIDE NEW BRANCH CIRCUITS, AS REQUIRED. 39. EXISTING ELECTRICAL EQUIPMENT, DEVICES AND LIGHTING ARE TAKEN FROM AS-BUILT DRAWINGS. VERIFY EXISTING CONDITIONS. 40. PROVIDE A MINIMUM OF 2 #12 W, 1 #12 GROUND IN 3/4" CONDUIT FOR HOMERUN BRANCH CIRCUITS, UNLESS DETERMINED OTHERWISE BY VOLTAGE DROP. 41. ALL CONDUCTORS SHALL BE COPPER HAVING THIN/THWN AND XHHW INSULATION IN COMPLIANCE WITH NEMA WC 70 AND SUITABLE FOR WET LOCATION.	

ELECTRICAL RENOVATION NOTES:	
1. EXISTING CONDITIONS ARE SHOWN BASED ON INFORMATION OBTAINED FROM EXISTING BUILDING DOCUMENTS AND STAFF. VERIFY EXISTING CONDITIONS AND REPORT ANY CONFLICTS BEFORE PROCEEDING. 2. NOT ALL EXISTING EQUIPMENT, LUMINAIRES, AND CONDUIT ARE SHOWN. VERIFY EXISTING CONDITIONS AND REPORT ANY CONFLICTS WITH NEW WORK BEFORE STARTING WORK. 3. FIELD VERIFY THE AVAILABLE CLEARANCES FOR CABLE TRAY, BUSWAY AND CONDUITS BEFORE FABRICATION. RISES AND DROPS MAY BE NECESSARY BECAUSE OF EXISTING FIELD CONDITIONS. 4. EACH CONTRACTOR SHALL FIELD VERIFY ACCESSIBILITY TO THE AREA OF THEIR WORK AND SHALL NOTIFY THE GENERAL CONTRACTOR AND ARCHITECT/ENGINEER PRIOR TO BIDDING IF OTHER UTILITIES ARE REQUIRED TO BE REMOVED OR RELOCATED TO ALLOW ACCESS TO THEIR AREA OF WORK. 5. THE GENERAL CONTRACTOR IS RESPONSIBLE FOR CUTTING, REMOVAL AND PATCHING OF ROOFS, WALLS, AND FLOORS ASSOCIATED WITH WORK BY ALL CONTRACTORS. CONTRACTORS SHALL NOTIFY THE GC OF AFFECTED AREAS PRIOR TO BIDDING. 6. THE GENERAL CONTRACTOR IS RESPONSIBLE FOR REMOVAL AND REPLACEMENT OF CEILINGS, CEILING TILES, AND CEILING GRIDS ASSOCIATED WITH AREAS OF WORK BY ALL CONTRACTORS. NOTIFY THE GENERAL CONTRACTOR OF AFFECTED AREAS PRIOR TO BIDDING. 7. WHERE EXISTING ELECTRICAL SYSTEMS ARE LOCATED IN AREAS THAT CONFLICT WITH NEW EQUIPMENT, PIPING, OR DUCTWORK TO BE INSTALLED, EACH CONTRACTOR SHALL EITHER ARRANGE NEW EQUIPMENT, CONDUIT, OR DUCTWORK IN SUCH A FASHION THAT IT DOES NOT CONFLICT WITH EXISTING SYSTEMS, OR REWORK EXISTING ELECTRICAL SYSTEMS TO ALLOW FOR INSTALLATION OF NEW EQUIPMENT, PIPING, OR DUCTWORK.	

ELECTRICAL SHEET INDEX	
E000	ELECTRICAL COVERSHEET
E200	LEVEL 03 PLAN - ELECTRICAL
GRAND TOTAL: 2	

www.imegcorp.com

IMEG RESERVES PROPRIETARY RIGHTS, INCLUDING COPYRIGHTS, TO THIS DRAWING AND THE DATA SHOWN THEREON. SAID DRAWING AND/OR DATA ARE THE EXCLUSIVE PROPERTY OF IMEG AND SHALL NOT BE USED OR REPRODUCED FOR ANY OTHER PROJECT WITHOUT THE EXPRESS WRITTEN APPROVAL AND PARTICIPATION OF IMEG.

©2025 IMEG CONSULTANTS CORP.  
Missouri Certificate of Authority #2023010035

1000 BALTIMORE SUITE 300 KANSAS CITY, MO 64108 P: 816.942.8437

8 2 0

REF. SCALE IN INCHES

PROJECT #202004022\_00

P. Lindsay Robertson - #PE  
2002016725  
08.29.2025

# ACI BOLAND ARCHITECTS

ACI/Boland, Inc.  
Kansas City | St. Louis  
1710 Wyandotte  
Kansas City, MO 64108  
T: 816.763.9600

Licensee's Certificate of Authority Number: #0012765  
Missouri: #000958

**MEP CONSULTANT**

1600 Baltimore Ave, Suite 300  
Kansas City, MO 64108  
816.842.8437  
Licensee's Certificate of Authority Number: #0012765

## SAINT LUKE'S EAST HOSPITAL SUITE 300 REMODEL 20 NE SAINT LUKE'S BLVD. LEE'S SUMMIT, MO 64086

Date	08.29.2025
Job Number	3-25069
Drawn By	MSA
Checked By	PLR

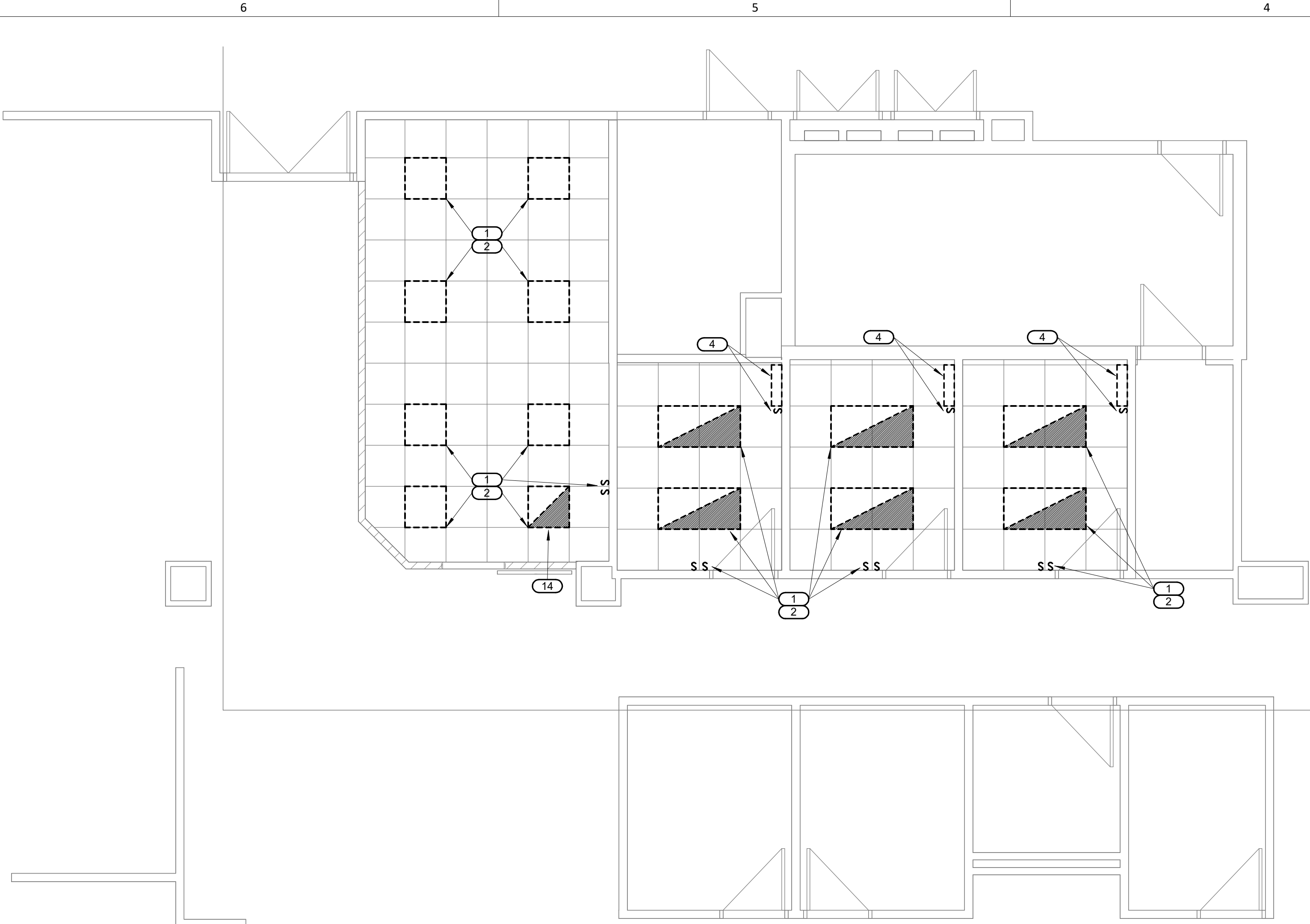
Revision		
Number	Date	Description

# E000

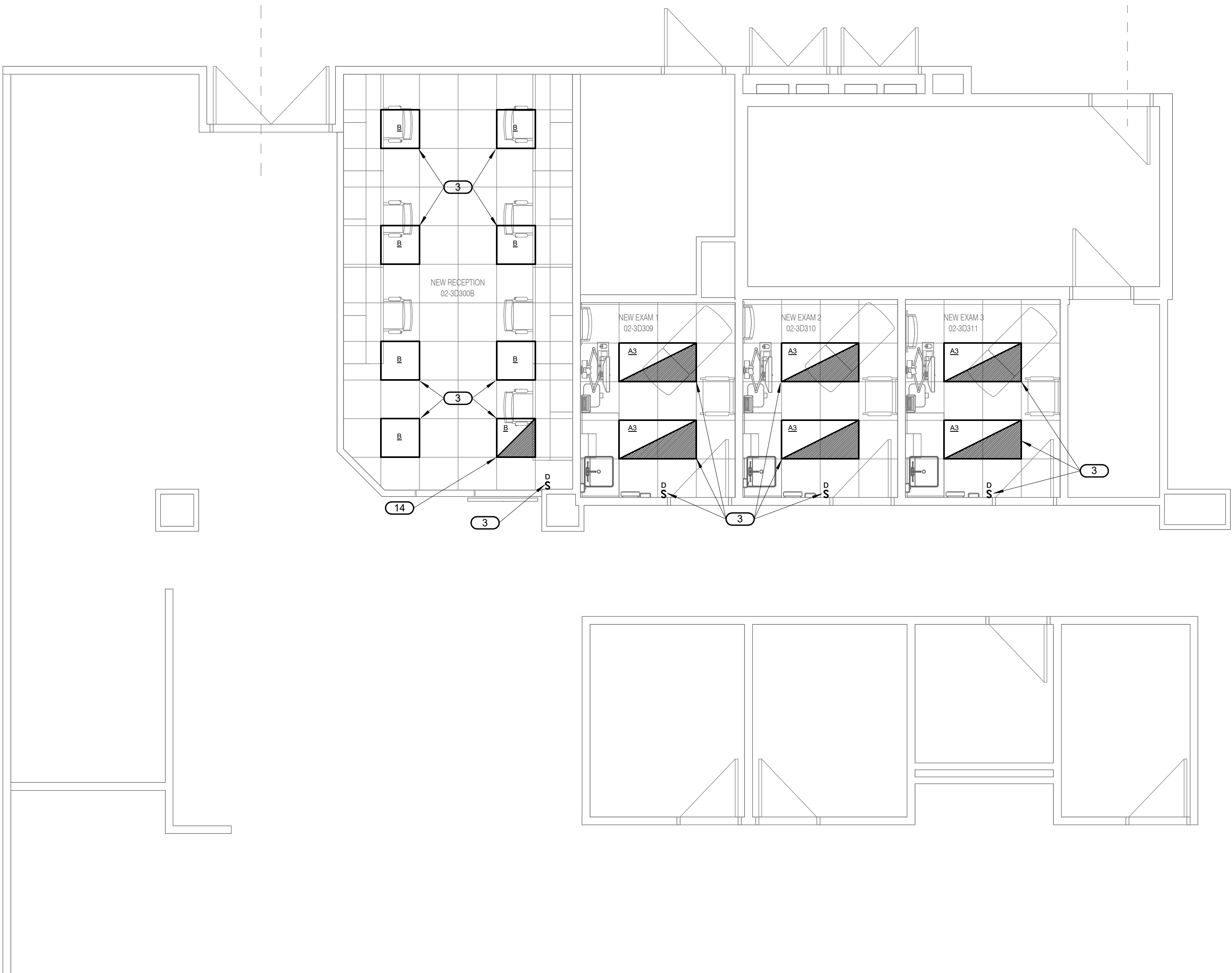
© 2025 ACI/BOLAND, Inc.

ELECTRICAL COVERSHEET

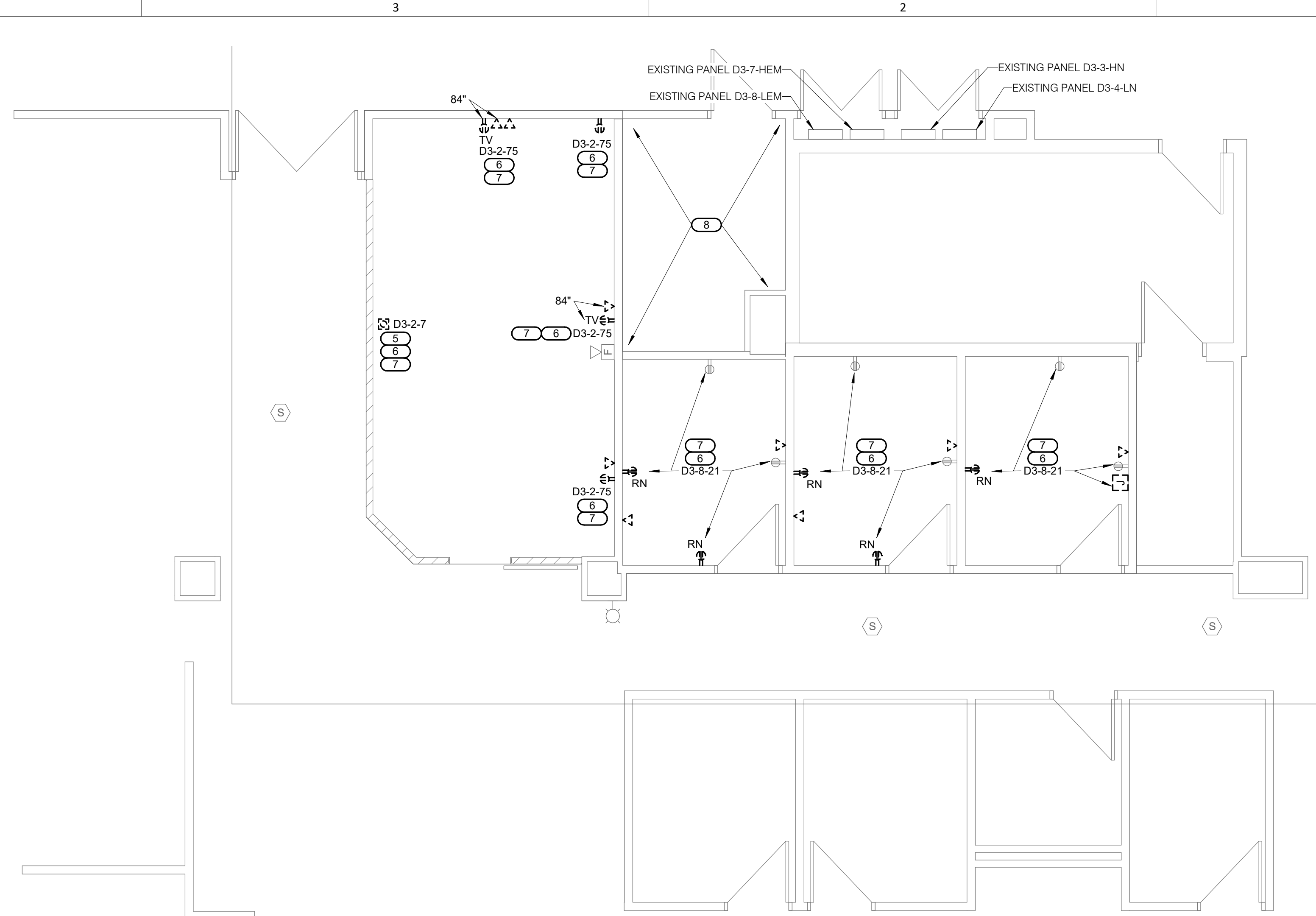
8/29/2025 1:09:54 PM  
Autodesk Docs/15-25069 SLE Clinics - Suites 120-245-300/MEP24\_25004922.00\_Building D MOB-Suite 300  
Renovation, C-V1



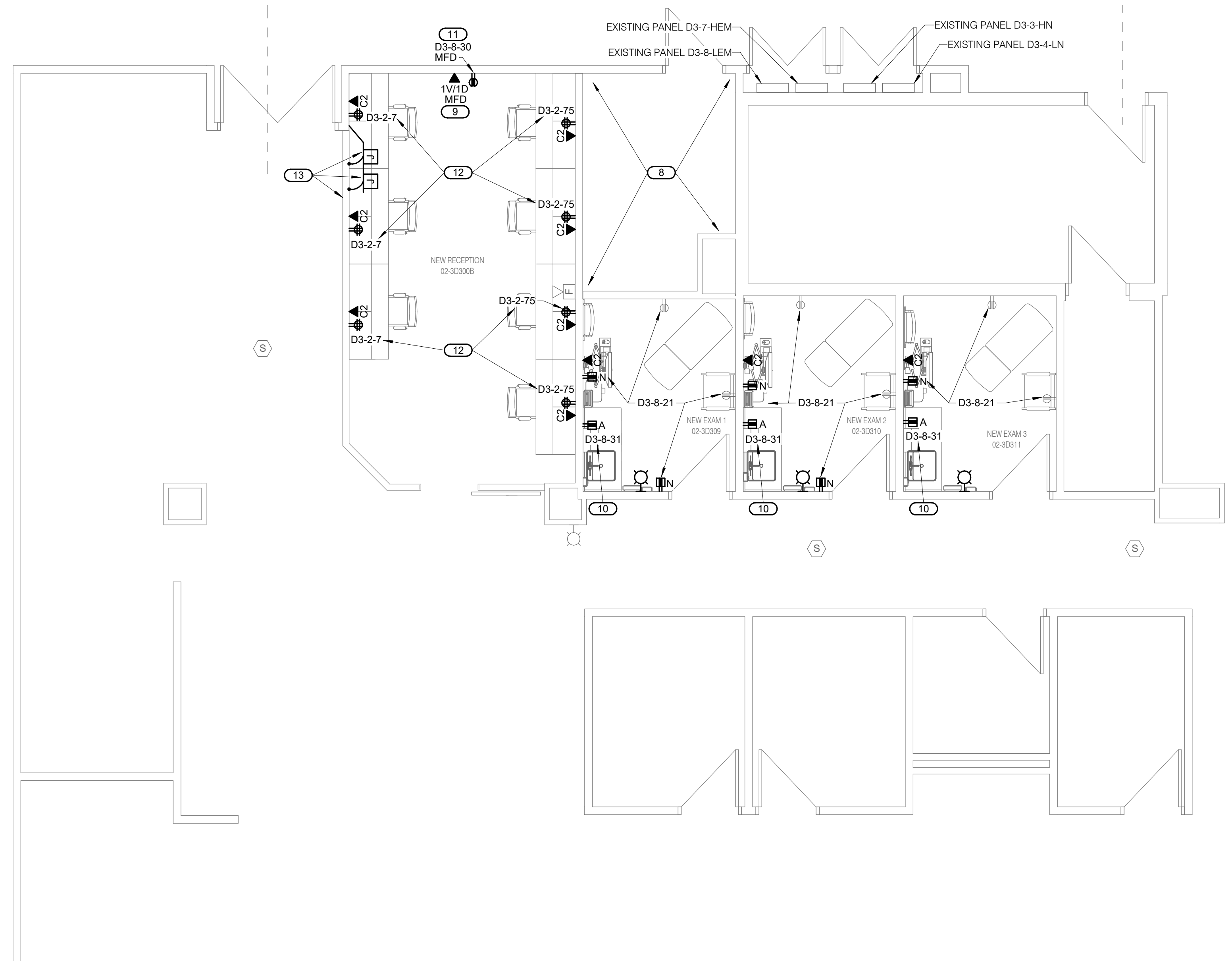
**1 LEVEL 03 DEMOLITION PLAN - LIGHTING**  
1/4" = 1'-0"



**3 LEVEL 03 PLAN - LIGHTING**  
1/4" = 1'-0"



**2 LEVEL 03 DEMOLITION PLAN - POWER AND SYSTEMS**  
1/4" = 1'-0"



**4 LEVEL 03 PLAN - POWER AND SYSTEMS**  
1/4" = 1'-0"

- SHEET NOTES:**
1. REFER TO SHEET E000 FOR ELECTRICAL GENERAL NOTES. NOT ALL NOTES WILL APPLY TO THIS SHEET.
  2. NEW FIRE ALARM DEVICES SHALL BE INTERCONNECTED TO EXISTING FIRE ALARM SYSTEM SERVING THE FACILITY. PROVIDE ANY NEW COMPONENTS AND PANEL REQUIRED IN EXISTING FIRE ALARM SYSTEM TO SERVE DEVICES. ALL DEVICES, PANEL, COMPONENTS AND PLENUM RATED CABLING SHALL BE FURNISHED AND INSTALLED AS REQUIRED.
  3. EXTEND ALL I.T. CABLES TO EXISTING NETWORK CLOSET. PROVIDE NEW PATCH PANELS FOR NEW CABLES AS REQUIRED.
- KEYNOTES:**
1. BASE BID - EXISTING LIGHT FIXTURES, LIGHTING CONTROL AND BRANCH CIRCUIT(S) TO REMAIN.
  2. ALTERNATE BID - EXISTING LIGHT FIXTURES AND LIGHTING CONTROL TO BE REMOVED. MAINTAIN EXISTING CIRCUIT(S) FOR NEW WORK.
  3. ALTERNATE BID - PROVIDE NEW LIGHT FIXTURES AND LIGHTING CONTROL INDICATED. INTERCEPT, EXTEND AND CONNECT EXISTING CIRCUIT.
  4. EXISTING UNDERCABINET LIGHT FIXTURE AND WALL SWITCH TO BE REMOVED. MAINTAIN EXISTING CIRCUIT.
  5. EXISTING FLOOR POKE-THROUGH AND DEVICE TO BE REMOVED.
  6. MAINTAIN EXISTING CIRCUIT FOR NEW WORK INDICATED.
  7. AS-BUILT DRAWING INDICATES DESIGNATED PANEL AND BRANCH CIRCUIT SERVES DEVICES(S). TRACE AND VERIFY EXISTING CONDITIONS.
  8. UTILIZE EXISTING I.T. NETWORK ROOM FOR NEW CABLING.
  9. PROVIDE ONE VOICE ANALOG AND ONE NETWORK DATA CONNECTION AT MFD/PRINTER LOCATION.
  10. ROUTE NEW CIRCUIT TO EXISTING EMERGENCY PANEL D3-8-LEM. PROVIDE NEW 20AMP, 1-POLE BREAKER IN EXISTING 1-POLE SPACE. RELABEL CIRCUIT SCHEDULE DIRECTORY AS REQUIRED.
  11. ROUTE NEW CIRCUIT TO EXISTING EMERGENCY PANEL D3-8-LEM. PROVIDE NEW 20AMP, 1-POLE BREAKER IN EXISTING 1-POLE SPACE. RELABEL CIRCUIT SCHEDULE DIRECTORY AS REQUIRED.
  12. INTERCEPT, EXTEND AND CONNECT TO EXISTING RECEPTACLE CIRCUIT INDICATED.
  13. EXISTING FURNITURE WALL RECEPTACLE AND NETWORK CONNECTION ARE INDICATED AND MAY REQUIRE HARDWARE WALL OUTLETS AND CONDUIT WHIPS FOR CONNECTION OF NEW WORKSTATIONS. VERIFY EXISTING CONDITIONS.
  14. ALTERNATE BID - DESIGNATED LIGHT FIXTURE, LIGHTING CONTROL AND CIRCUIT ORIGINATE FROM THE ADJACENT EXISTING WAITING AREA. MAINTAIN EXISTING CIRCUIT AND CONTROL FOR NEW WORK INDICATED.

**KEY PLAN**  
N.T.S.

**IMEG**  
1600 BALTIMORE AVE., SUITE 300  
KANSAS CITY, MO 64108  
P: 816.842.8437  
www.imegcorp.com

IMEG RESERVES PROPRIETARY RIGHTS, INCLUDING COPYRIGHTS, TO THIS DRAWING AND THE DATA SHOWN THEREON. SAID DRAWING AND/OR DATA ARE THE EXCLUSIVE PROPERTY OF IMEG AND SHALL NOT BE USED OR REPRODUCED FOR ANY OTHER PROJECT WITHOUT THE EXPRESS WRITTEN APPROVAL AND PARTICIPATION OF IMEG. ©2025 IMEG CONSULTANTS CORP.  
Missouri Certificate of Authority #2023010035

8 4 0  
REF. SCALE IN INCHES PROJECT #25004922.00

**ACI BOLAND ARCHITECTS**  
ACI/Boland, Inc.  
Kansas City | St. Louis  
1710 Wyandotte  
Kansas City, MO 64108  
T: 816.763.9600  
Licensee's Certificate of Authority Number:  
Missouri: #000958

**MEP CONSULTANT**  
1600 Baltimore Ave, Suite 300  
Kansas City, MO 64108  
816.842.8437  
Licensee's Certificate of Authority Number:  
#00127265

**SAINT LUKE'S EAST HOSPITAL  
SUITE 300 REMODEL  
20 NE SAINT LUKE'S BLVD.  
LEE'S SUMMIT, MO 64086**

Date 08.29.2025  
Job Number 3-25069  
Drawn By MSA  
Checked By PLR

Revision  
Number Date Description

**E200**  
© 2025 ACI/BOLAND, Inc.  
LEVEL 03 PLAN - ELECTRICAL