

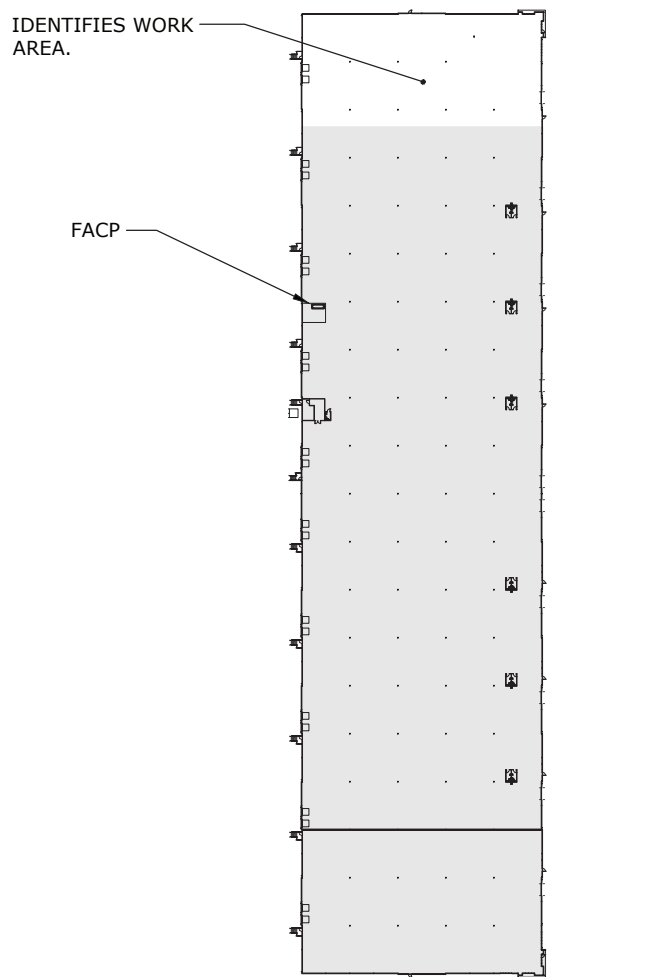
CONSTRUCTION TYPE: II-B
OCCUPANCY TYPE: B-S1-H3
LEVELS: 1
TOTAL SQUARE FOOTAGE: 24,502
Central Station Service-Alarm Central

Fire Alarm General Notes

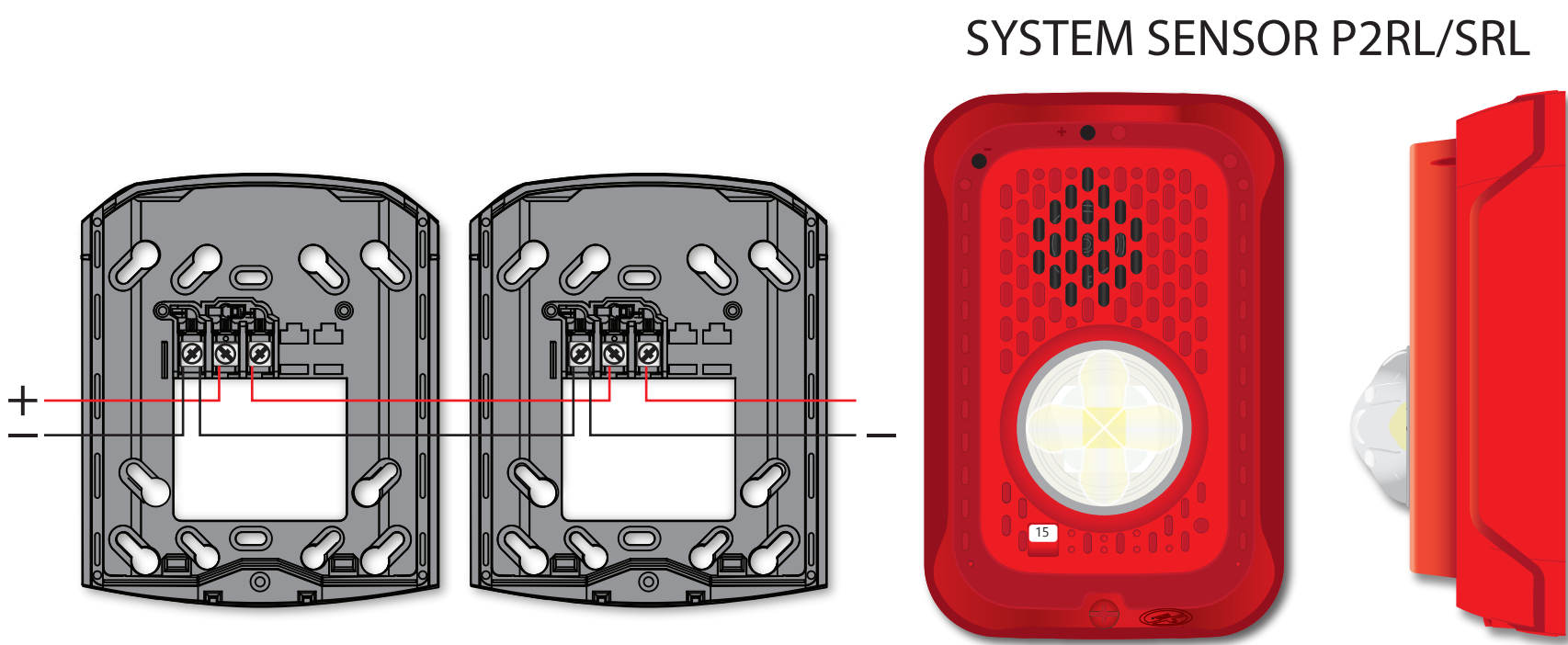
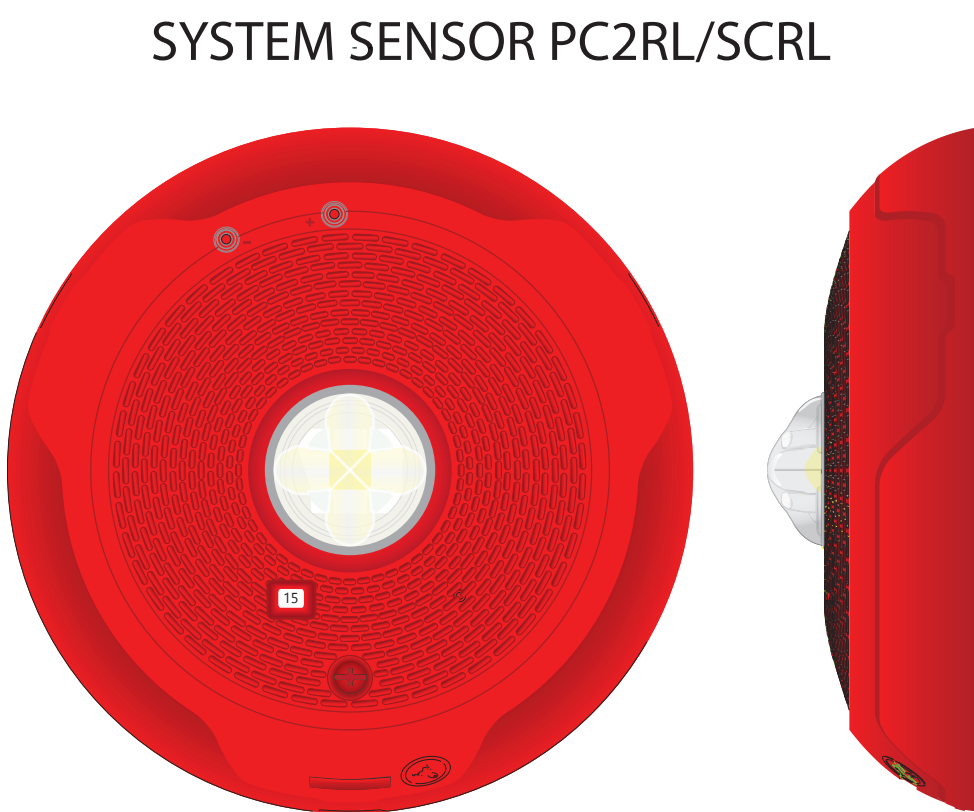
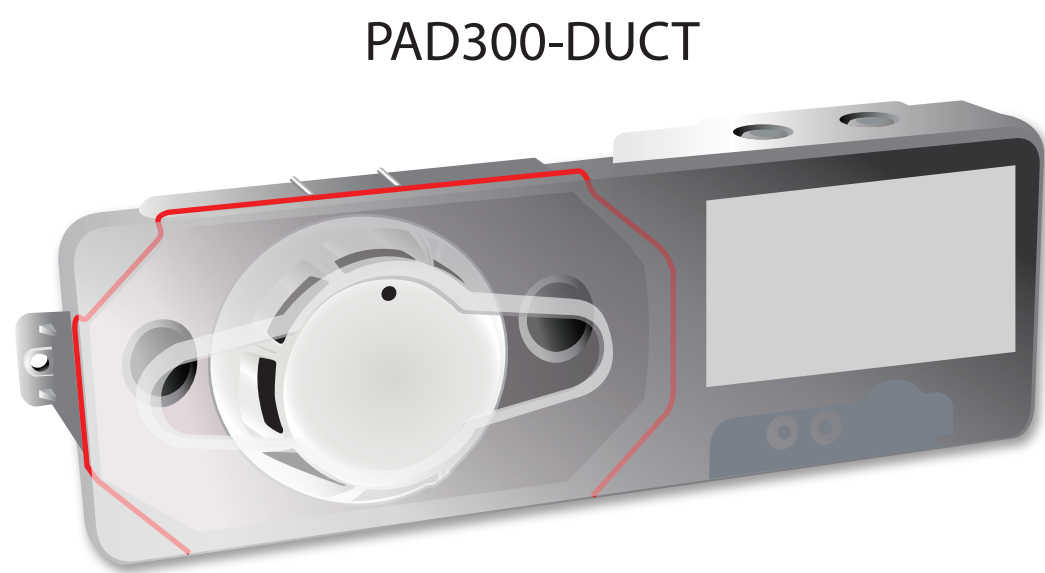
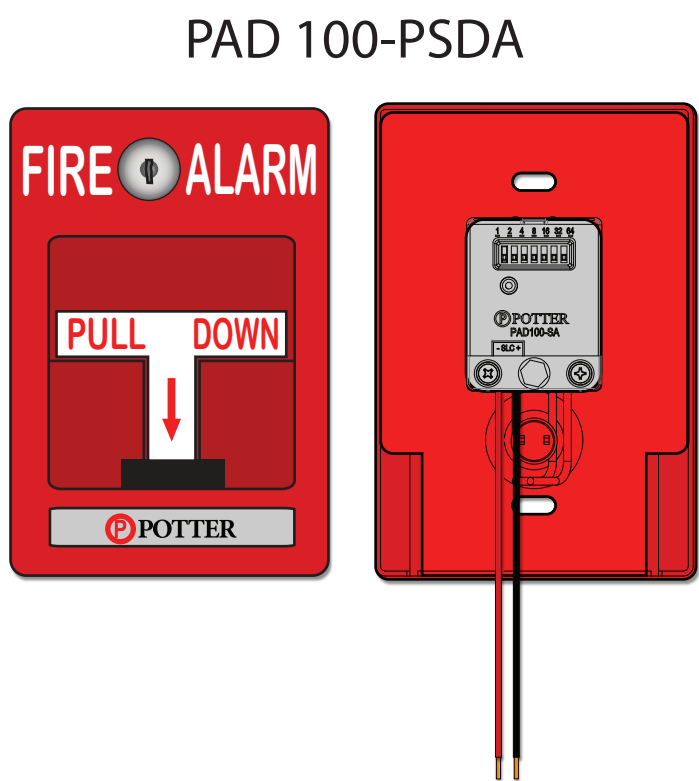
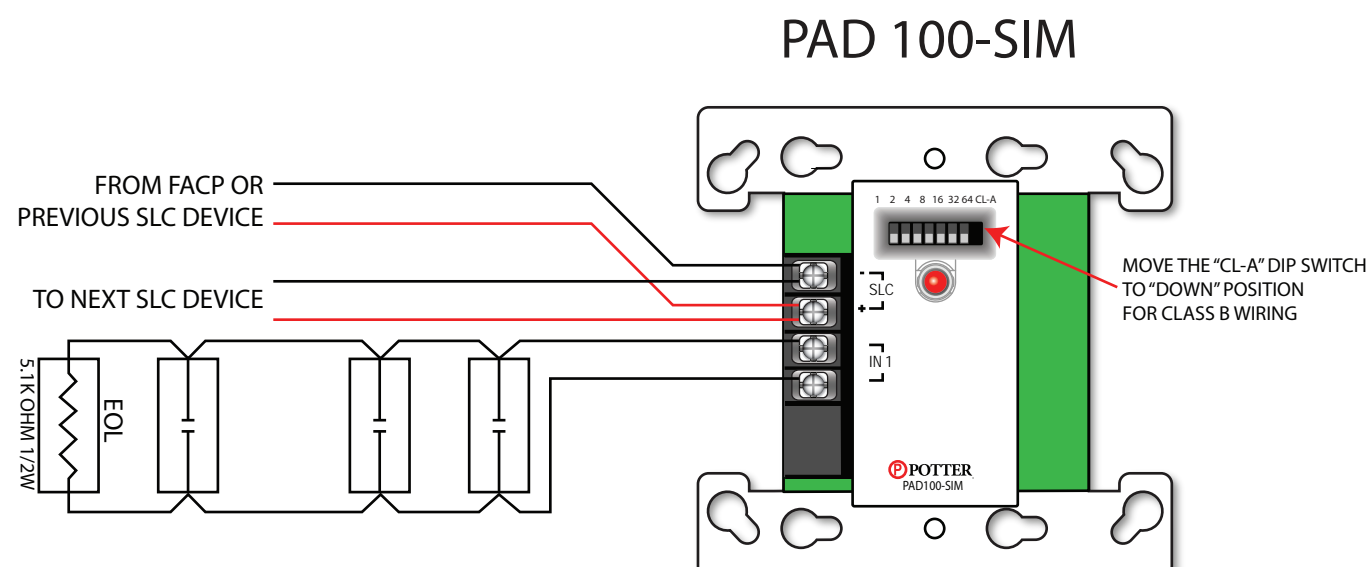
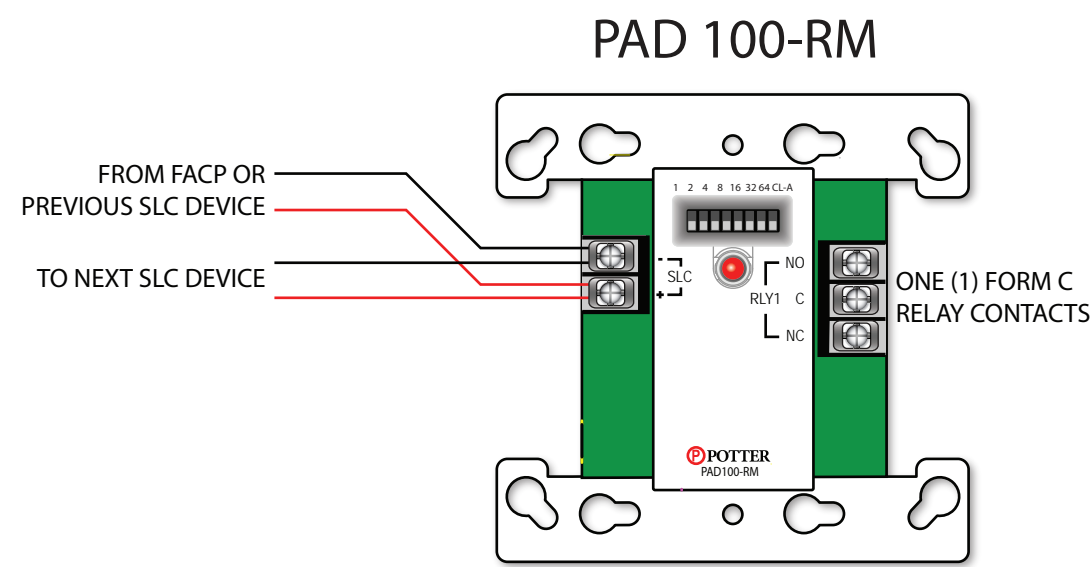
1. Wall mounted visual notification devices will be mounted so that the entire lens is not less than 80" and not greater than 96" AFF.
2. Wall signal devices can be mounted on 4"x4"x2" with or without mud ring, 4"x4"x1.5" with or without mud ring, or 1-Gang box or a low voltage ring. Ceiling signal devices can be mounted on 4"x4"x2" box or 3-1/2" octagon box.
3. Strobes shall be synchronized by floor and area.
4. All horns and horn strobes will be 15dba above ambient noise.
5. Pull stations will be mounted within 5' of the exit on each floor. The operable lever will not be less than 42" and not more than 48" AFF. Pull stations can be mounted on 4"x4"x2" box with or without mud ring, 4"x4"x1.5" with or without mud ring, or 1-Gang box. DO NOT USE LOW VOLTAGE RING TO MOUNT PULL STATIONS. All modules will be mounted in 4"x4"x2" boxes.
7. All wiring shall be ran according to code and if not ran in conduit it will be held high above finished ceiling and properly secured and supported.
8. All fire alarm wiring below 7 feet will be in conduit.
9. All devices will be clearly labeled.
10. All junction boxes related to fire alarm require a RED cover.
11. Open ceiling wiring shall be ran in conduit if support is not available.
12. Smoke detectors will be mounted no less than 36 inches from any air diffuser.
13. General Alarm will sound when any device is in alarm.
14. Ceiling mounted detectors Can be mounted on 3-1/2 in. Octagon box, 4"x4"x2" with or without mud ring, 4"x4"x1.5" with or without mud ring, or 1-Gang box. IF it is a hard ceiling a low voltage ring can be used.
15. RTA and RTS can be mounted on single gang box or low voltage ring. RTS must be mounted no higher than 7 feet above finished floor.
16. Air handlers shut down on any smoke indication.
17. Duct detectors are programmed as supervisory devices.
18. The SLC devices: will be wired together and wired back to the Fire Alarm Control Panel.
19. Fire doors will release on smoke only.
20. ALL CONDUIT STUBS WILL HAVE INSULATORS AND KNOCK OUTS. WILL HAVE BUSHINGS INCLUDING WIREMOLD.

**BUILDING IS
100% SPRINKLED**

This system designed
and installed according to
NFPA 72 2019 - IBC 2018
& IFC 2018 SECTION 907



KEY PLAN SCALE: 1"=200'-0"



Fire Alarm Solutions

3150 MERCIER SUITE 520
KANSAS CITY, MO 64111
816-753-4660

Description:
Tenant Finish

These drawings are the intellectual property and actual property of Fire Alarm Solutions and or Keninco Industries, Inc. It is submitted in confidence and is not to be disclosed or used without our expressed written consent.

Date:	8/24/2025		
Job:	SONNY'S		
Drawing:	1.0	Sheet	1 of 2
Scale:	1/8inch = 1 foot		

GREGORY P. GLADFELTER PE

10233 MILLSTONE DRIVE, #4112
LENEXA, KS 66220

Gregory Gladfelter the designer design incorporated in this project for only the fire alarm discipline. All other drawings should be considered the work of others. Further, drawings in this project set may contain drawing information, including but not limited to: architectural plans, sections and elevations, site plans and surveys and other information pertinent to drawing the fire alarm work which is furnished by others, generally indicated by screened or light type. Gregory Gladfelter PE assumes no responsibility or liability for the accuracy or regulatory compliance for work prepared by others even though shown on FA drawings. Gregory Gladfelter PE assumes responsibility only for the design of fire alarm disciplines contained herein, generally indicated in bold type.



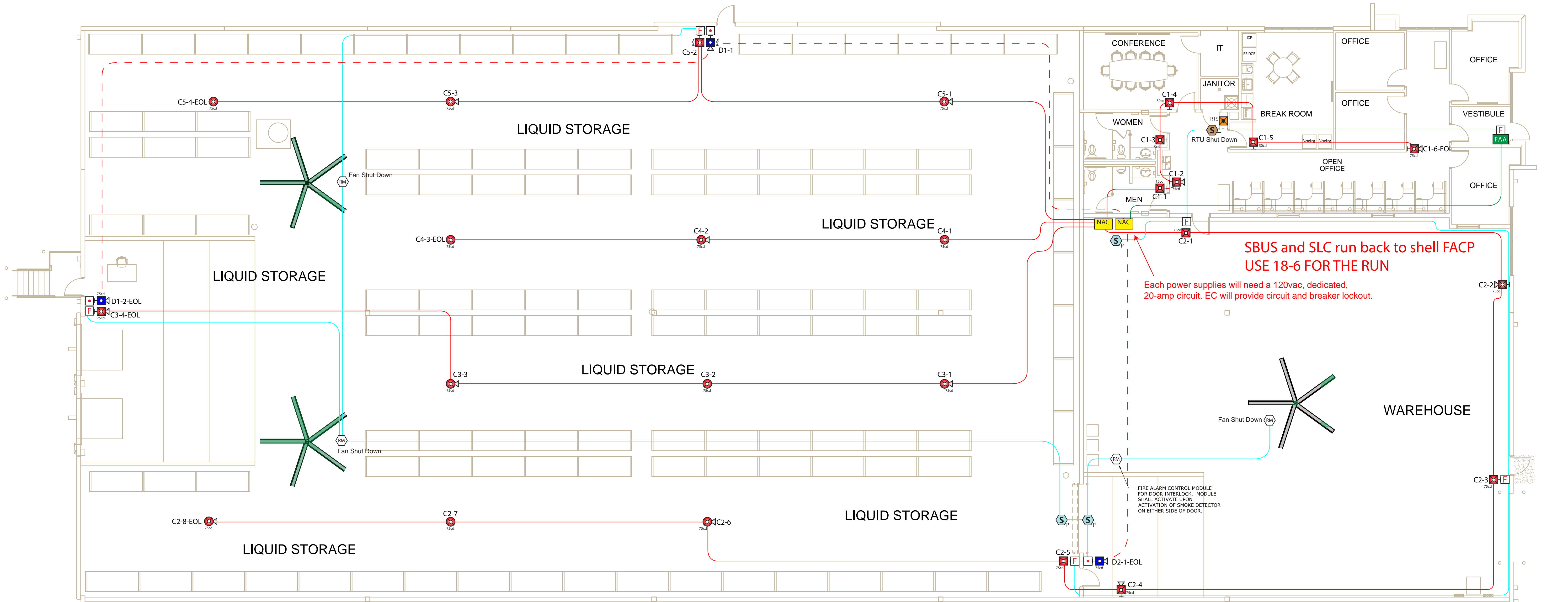
↑ AHJ SEAL ↑

SONNY'S

2201 NE TOWN CENTRE BOULEVARD
LEE'S SUMMIT, MISSOURI 64064

FIRE ALARM PLAN

FA 1.0



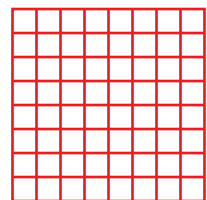
SBUS and SLC run back to shell FACP
USE 18-6 FOR THE RUN

Each power supplies will need a 120vac, dedicated,
20-amp circuit. EC will provide circuit and breaker lockout.

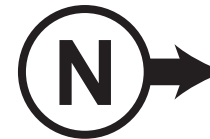
FIRE ALARM CONTROL MODULE
FOR DOOR INTERLOCK. MODULE
SHALL ACTIVATE UPON
ACTIVATION OF SMOKE DETECTOR
ON EITHER SIDE OF DOOR.

Fire Alarm Symbols NFPA-170 2015

Item	Description	Item	Description
	Remote Power Supply		Fire Alarm Annunciator
	Photoelectric Smoke Detector		End Of Line Resistor
	Duct Detector (Return)		Button Hazardous Materials
	Remote Alarm Indicating And Test Switch		
	Pull Station		
	Alarm Strobe/Ceiling Mount		
	Alarm Horn/Strobe Ceiling Mount		
	Alarm Strobe/Wall Mount		
	Alarm Horn/Strobe Wall Mount		
	Valve Supervisory Switch (Tamper)		
	Flow Detector/switch		
	Addressable Input Monitor Module		
	Relay Module		



1/8" = 1' = 8"



15' 30' 45'

Addressable Wiring Legend

- SBUS**
18-4 (or larger) non-shielded, plenum rated, solid core, FPLP, copper fire alarm wire.
{In conduit} 18ga (or larger) THHN stranded, copper wire.
- SLC**
{Open plenum} 18-2ga (or larger) non-shielded, plenum rated, solid core, FPLP, copper fire alarm wire.
{In conduit} 18ga. THHN stranded, copper wire.
- NAC**
{Open plenum} 14-2ga. (or larger) non-shielded, plenum rated, solid core, FPLP (or higher), copper fire alarm wire.
{In conduit} 14ga (or larger) THHN stranded, copper wire.



3150 MERCIER SUITE 520
KANSAS CITY, MO 64111
816-753-4660

Description:
Tenant Finish

These drawings are the intellectual property and actual property of Fire Alarm Solutions and or Kenyco Industries, Inc. It is submitted in confidence and is not to be disclosed or used without our expressed written consent.

Date:	8/24/2025		
Job:	SONNY'S		
Drawing:	1.1	Sheet	2 of 2
Scale:	1/8inch = 1foot		

GREGORY P. GLADFELTER PE

10233 MILLSTONE DRIVE, #4112
LENEXA, KS 66220

Gregory Gladfelter the designer design and responsible for this project for only the fire alarm discipline. All other drawings should be considered the work of others. Further, drawings in this project set may contain drawing information, including but not limited to: architectural plans, sections and elevations, site plans and surveys and other information pertinent to drawing the fire alarm work which is furnished by others, generally indicated by screened or light type. Gregory Gladfelter PE assumes no responsibility or liability for the accuracy or regulatory compliance for work prepared by others even though shown on FA drawings. Gregory Gladfelter PE assumes responsibility only for the design of fire alarm disciplines contained herein, generally indicated in bold type.



↑ AHJ SEAL ↓

SONNY'S

2201 NE TOWN CENTRE BOULEVARD
LEE'S SUMMIT, MISSOURI 64064

FIRE ALARM PLAN

FA 1.1