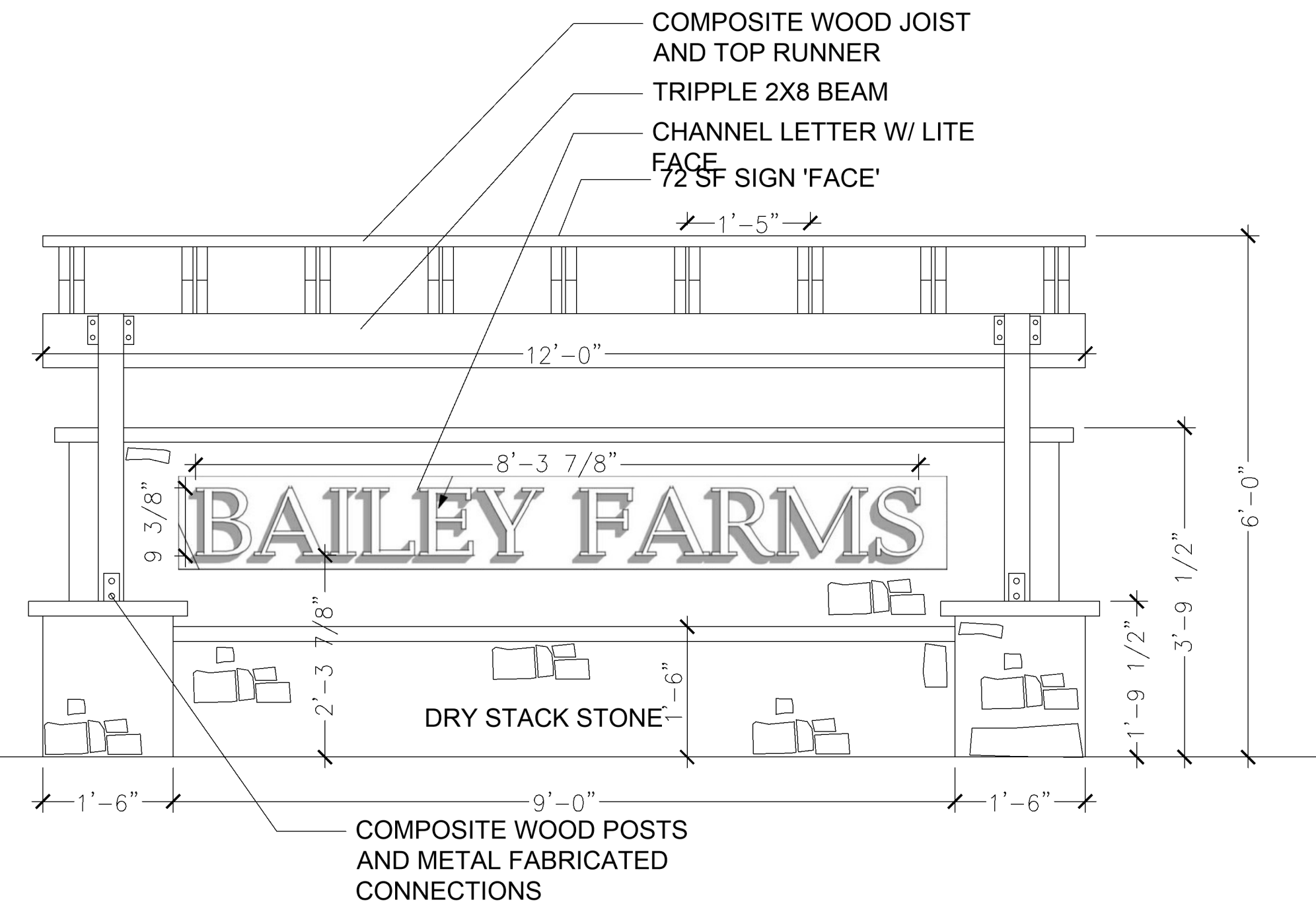
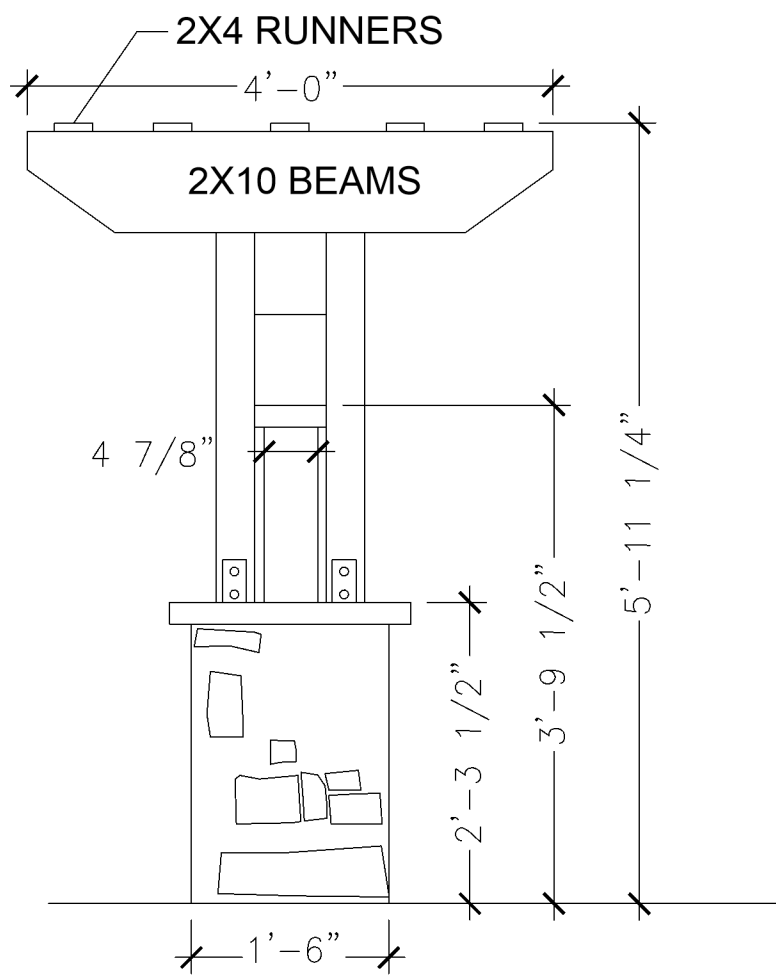


1 MONUMENT AREA LANDSCAPE PLAN - BAILEY FARMS PARKWAY AND SE BAILEY ROAD ENTRANCE

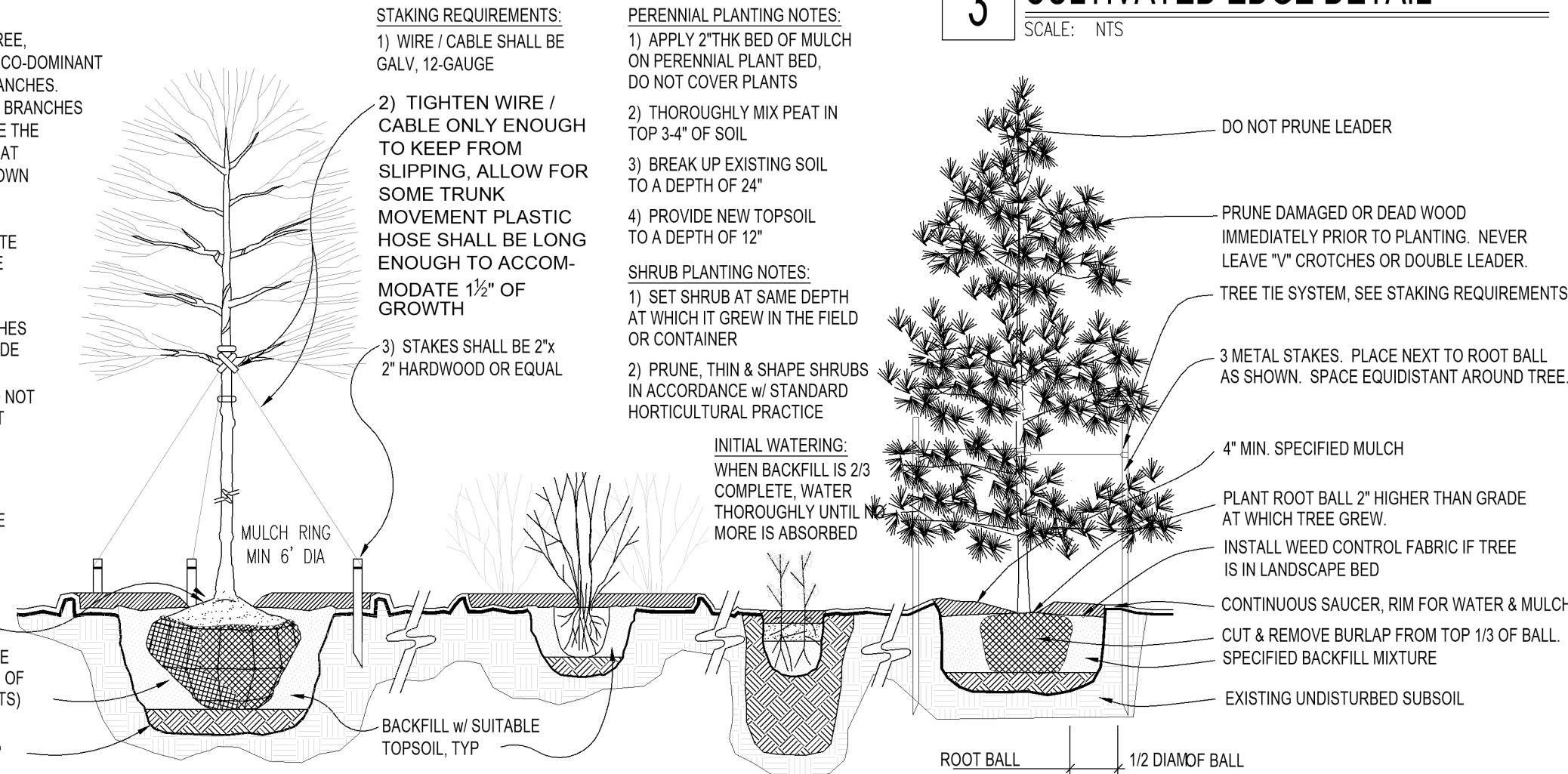


2 MONUMENT SIGN ELEVATION VIEW (DESIGN BY OTHERS)



- TREE PLANTING NOTES:
- DO NOT HEAVILY PRUNE THE TREE. PRUNE ONLY CROSSOVER LIMBS, CO-DOMINANT LEADERS, & BROKEN OR DEAD BRANCHES. SOME INTERIOR TWIGS & LATERAL BRANCHES MAY BE PRUNED. DO NOT REMOVE THE TERMINAL BUDS OF BRANCHES THAT EXTEND TO THE EDGE OF THE CROWN
  - MARK THE NORTH SIDE OF THE TREE IN THE NURSERY, AND ROTATE TREE TO FACE NORTH AT THE SITE WHENEVER POSSIBLE
  - SET TOP OF ROOT BALL 1-2 INCHES HIGHER THAN SURROUNDING GRADE
  - APPLY 4" THK WOOD MULCH. DO NOT PLACE MULCH IN DIRECT CONTACT W/ TREE TRUNK
  - EACH TREE MUST BE PLANTED SUCH THAT THE TRUNK FLARE IS VISIBLE AT THE TOP OF THE ROOT BALL. TREES WHERE THE FLARE IS NOT VISIBLE SHALL BE REJECTED. DO NOT COVER THE TOP OF THE ROOT BALL W/ SOIL
  - REMOVE ALL TWINE, ROPE, WIRE AND BURLAP FROM THE UPPER 1/3 OF ROOT BALL (REMOVE WIRE BASKETS)
  - PLACE ALL ROOT BALLS ON UN-EXCAVATED OR TAMPED SOIL. TYP

4 PLANTING INSTALLATION DETAILS



- STAKING REQUIREMENTS:
- WIRE / CABLE SHALL BE GALV. 12-GAUGE
  - TIGHTEN WIRE / CABLE ONLY ENOUGH TO KEEP FROM SLIPPING. ALLOW FOR SOME TRUNK MOVEMENT. PLASTIC HOSE SHALL BE LONG ENOUGH TO ACCOMMODATE 1/2" OF GROWTH
  - STAKES SHALL BE 2" x 2" HARDWOOD OR EQUAL
- PERENNIAL PLANTING NOTES:
- APPLY 2" THK BED OF MULCH ON PERENNIAL PLANT BED. DO NOT COVER PLANTS
  - THOROUGHLY MIX PEAT IN TOP 3-4" OF SOIL
  - BREAK UP EXISTING SOIL TO A DEPTH OF 24"
  - PROVIDE NEW TOPSOIL TO A DEPTH OF 12"
- SHRUB PLANTING NOTES:
- SET SHRUB AT SAME DEPTH AT WHICH IT GREW IN THE FIELD OR CONTAINER
  - PRUNE, THIN & SHAPE SHRUBS IN ACCORDANCE W/ STANDARD HORTICULTURAL PRACTICE
- INITIAL WATERING:
- WHEN BACKFILL IS 2/3 COMPLETE, WATER THOROUGHLY UNTIL NO MORE IS ABSORBED
- DO NOT PRUNE LEADER
- PRUNE DAMAGED OR DEAD WOOD IMMEDIATELY PRIOR TO PLANTING. NEVER LEAVE "Y" CROTCHES OR DOUBLE LEADER.
- TREE TIE SYSTEM, SEE STAKING REQUIREMENTS
- 3 METAL STAKES. PLACE NEXT TO ROOT BALL AS SHOWN. SPACE EQUIDISTANT AROUND TREE.
- 4" MIN. SPECIFIED MULCH
- PLANT ROOT BALL 2" HIGHER THAN GRADE AT WHICH TREE GREW.
- INSTALL WEED CONTROL FABRIC IF TREE IS IN LANDSCAPE BED
- CONTINUOUS SAUCER, RIM FOR WATER & MULCH CUT & REMOVE BURLAP FROM TOP 1/3 OF BALL. SPECIFIED BACKFILL MIXTURE
- EXISTING UNDISTURBED SUBSOIL
- ROOT BALL
- 1/2" DIAMOF BALL

3 CULTIVATED EDGE DETAIL

SCALE: NTS

## Planting Notes

- Location of all existing utilities needs to be done before commencing work.
- The planting plan graphically illustrates overall plant massings. Each plant species massing shall be placed in the field to utilize the greatest coverage of ground plane. The following applies for individual plantings:
  - Creeping groundcover shall be a minimum of 6" from paving edge.
  - All trees shall be a minimum of 3' from paving edge.
  - All plants of the same species shall be equally spaced apart and placed for best aesthetic viewing.
  - All shrubs shall be a minimum of 2' from paved edge.
- Mulch all planting bed areas to a minimum depth of 3". Mulch individual trees to a minimum depth of 4".
- Note: If plants are not labeled - they are existing and shall remain.

### Materials:

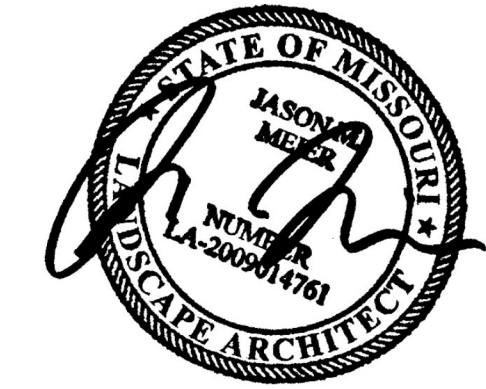
- Plant material shall be healthy, vigorous, and free of disease and insects as per AAN standards.
- Shredded bark mulch installed at trees shall be finely chipped and shredded hardwood chips, consisting of pure wood products and free of all other foreign substances. Pine bark compost mulch installed at planting bed areas shall be free of all other foreign substances.

### Installation:

- All planting beds shall be amended with 1 cubic yard of peat moss per 1,000 square feet. Till peat moss into soil to a 6" depth. A 10-10-10 fertilizer shall be spread over all planting areas prior to planting, at a rate of 50 pounds per 2,000 square feet.
- After plants have been installed, all planting beds shall be treated with Dacthal pre-emergent herbicide prior to mulch application.
- Plant pit backfill for trees and shrubs shall be 50% peat or well composted manure and 50% topsoil.
- Plant material shall be maintained and guaranteed for a period of one year after Owner's acceptance of finished job. All dead or damaged plant material shall be replaced at Landscape Contractor's expense.
- Landscape contractor shall maintain all plant material until final acceptance, at which point the one year guarantee begins.

## Landscape Schedule (This sheet only)

Symbol	Qty.	Botanical Name	Common Name	Min.Root	Min.Size	Caliper	Remarks
OVERSTORY TREES							
	2	Acer x truncatum 'Warrenred'	Pacific Sunset Maple		2.5"	6"	min. clear., ground to canopy
EVERGREEN TREES							
	4	Picea abies	Norway Spruce		6"	ht.	symmetrical pyramidal form
ORNAMENTAL TREES							
	3	Cercis canadensis	Eastern Redbud		1.5"		
DECIDUOUS SHRUBS							
	2	Spiraea japonica	Double Play Candy Corn Spiraea	3 gal.			
	4	Hydrangea paniculata 'Quick Fire'	Little Quick Fire Hydrangea	3 gal.			Plant @ 4' O.C.
EVERGREEN SHRUBS							
	6	Juniperus chinensis 'Gold Coast'	Gold Coast Juniper	3 gal.			Plant @ 4' O.C.
	3	Juniperus chinensis 'Spartan'	Spartan Juniper		5"	ht.	Symmetrical pyramidal form
GROUNDCOVERS AND GRASSES							
	4	Sedum spurium 'Dragon's Blood'	Dragon Blood Sedum	1 gal.			Plant @ 24" O.C.
PERENNIALS							
	25	Allium 'Millenium'	Onion - Ornamental	1 gal.			Plant @ 18" O.C.



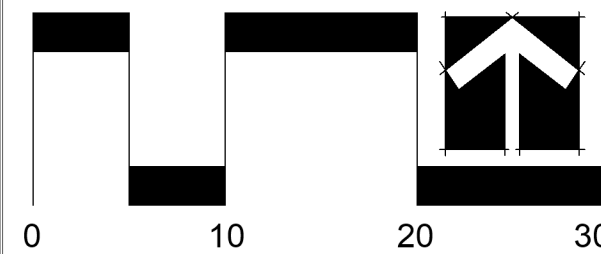
### CLIENT

Summit  
A Clayton Company  
71 SE 29th Terr. Suite B  
Lee's Summit, MO 64082

### PROJECT

Bailey Farms  
1800 SE Ranson Rd.  
Lee's Summit, MO 64082

SCALE: 1"=10'



Date: 8.20.2025  
Project #: 1278  
Landscape Plan

L1