



MANUFACTURER OF STRUCTURAL  
BUILDING COMPONENTS  
1700 Beltline Road E., Dyersville, Iowa 52040  
(800) 228-0290 (563) 875-2858  
FAX (563) 875-8326  
www.lbrspec.com

GENERAL LAYOUT NOTES:

- This Truss Placement Diagram was not created by an engineer, but rather by the Lumber Specialties, Ltd. staff and is purely to be used as an installation guide and does not require a seal. Complete truss engineering and analysis can be found on the Truss Design Drawings which may be sealed by the Truss Design Engineer as applicable. The trusses identified are designed as individual building components to be incorporated into the building to support the loads specified on the individual truss drawings. The Building Designer is to verify that no other load, from the overall building system, is imposed on these trusses.
- Dimensions are in ft - in - 16th; Verify all dimensions and see individual truss drawings for additional requirements. Any discrepancies between the dimensions and conditions specified on this layout versus the approved for construction blueprint should be reported prior to truss fabrication.
- Never exceed the design loading shown and never stack materials on inadequately braced trusses.
- Do NOT cut or alter truss location without prior approval of Lumber Specialties. All connection must be made in such a way as to prevent splitting. Pre-drill if necessary.
- For valley trusses, the roof under the valley trusses shall be sheathed. Conventional framed valleys shall transfer load uniformly to the trusses below.
- Design assumes trusses will be suitably protected from the environment in accord with ANSI/TP 1.
- Truss to wall connection, if specified, satisfies uplift requirements only. Truss uplift requirements are shown on the individual truss design drawings.
- The required permanent bracing for the truss top chord, bottom chord, and webs are specified on the individual truss drawing. T-bracing is to be used for webs when lateral bracing is impractical. Additional bracing may be required for overall building stability. Consult engineer of record for requirements.
- For general guidance regarding bracing consult "BCSI Guide to good practice for handling, installing, and bracing of metal plate connected wood trusses" available from the Truss Plate Institute, 218 North Lee St., Ste. 312, Alexandria, VA 22314 - (703) 683-1010 - www.tpiinst.org <http://www.tpiinst.org/>
- Provide blocking where necessary to allow for shear transfer between the roof diaphragm and the shear walls. Consult engineer of record for recommended load path. Blocking and connection to maintain the lateral load path is the responsibility of the engineer of record.
- Final approval of the layout and the truss components supplied for compliance with the project specifications remains the responsibility of the architect and engineer of record.

GENERAL SAFETY NOTES:

- Failure to follow could cause property damage or personal injury!
- Until the building is completely erected in accordance with the construction documents, the trusses are unstable and may present a safety hazard. Truss instability may increase with building width, height, and length.
- Buildings under construction are vulnerable to high winds and present a safety hazard. It is the responsibility of the contractor and truss installation crew to recognize adverse weather conditions and take prompt and appropriate action to protect life.
- Review all information provided in the JOBSITE PACKAGE to ensure compliance with industry recommendations.

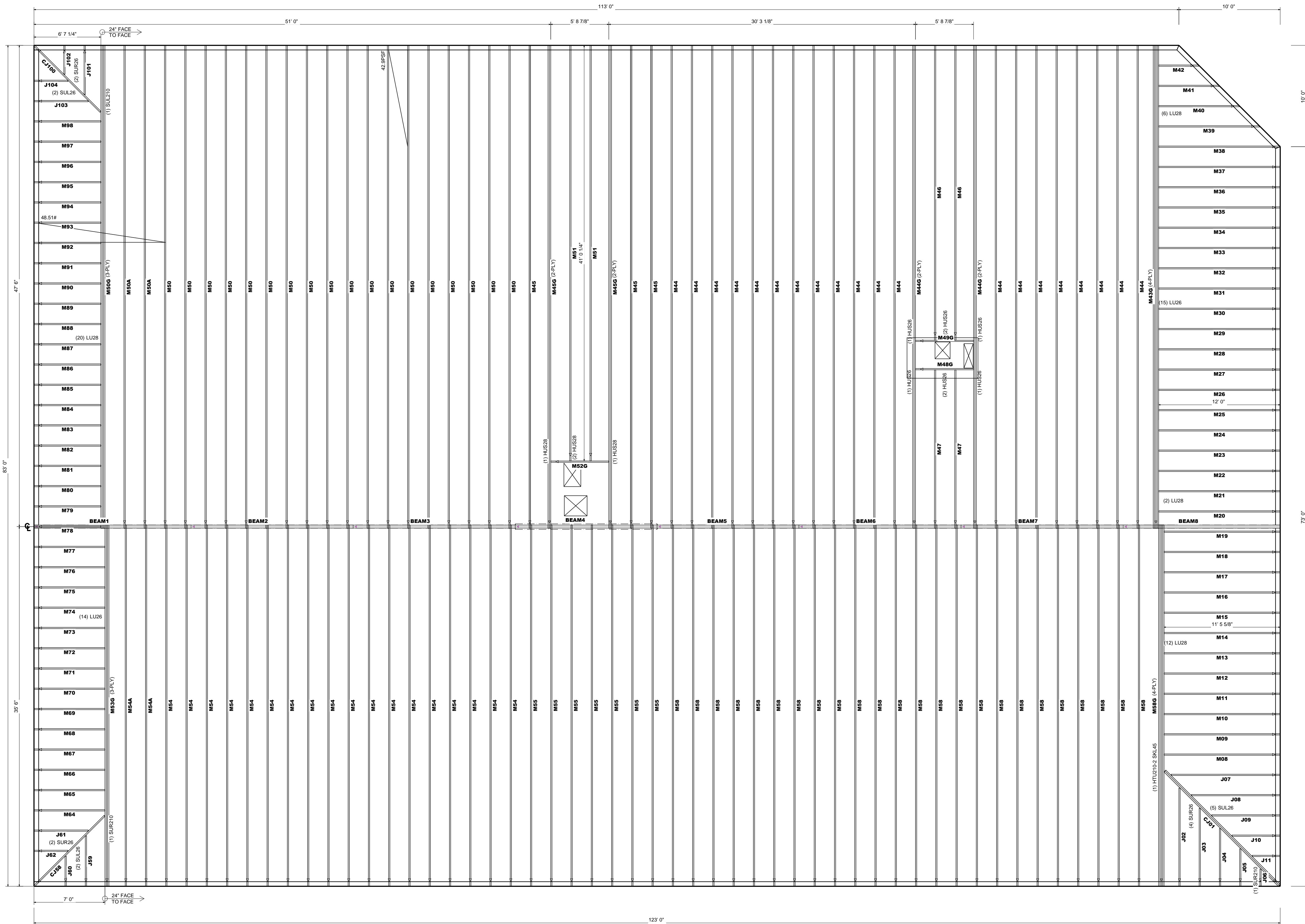
PRODUCT CODE APPROVALS:

ICC-ES Reports:  
ESR-1311, ESR-1352, ER-5243, 9604B,  
9730, 95-43, 96-31, 9667A,  
NER-487, NER-561,  
95110, 84-32, 96-67, ER-3907, 9432A

DESIGNER CONTACT INFORMATION

Chris Hawkins  
Direct Line: (563) 875-5712  
e-mail: chawkins@lbrspec.com

JOB # 2503401-A DATE: 6/16/2025  
Shelter Products Inc  
Discover Pet Spa  
1921 NE Trails Edge Blvd, Lee's Summit  
CHECKED BY:  
SCALE: 3/16" = 1' PAGE: 1 OF 1



(30) M100 - BLOCKING EVERY OTHER TRUSS OVER STEEL BEAM

ROOF PLACEMENT PLAN

ALL DIMENSIONS ARE OUT TO OUT OF STUD

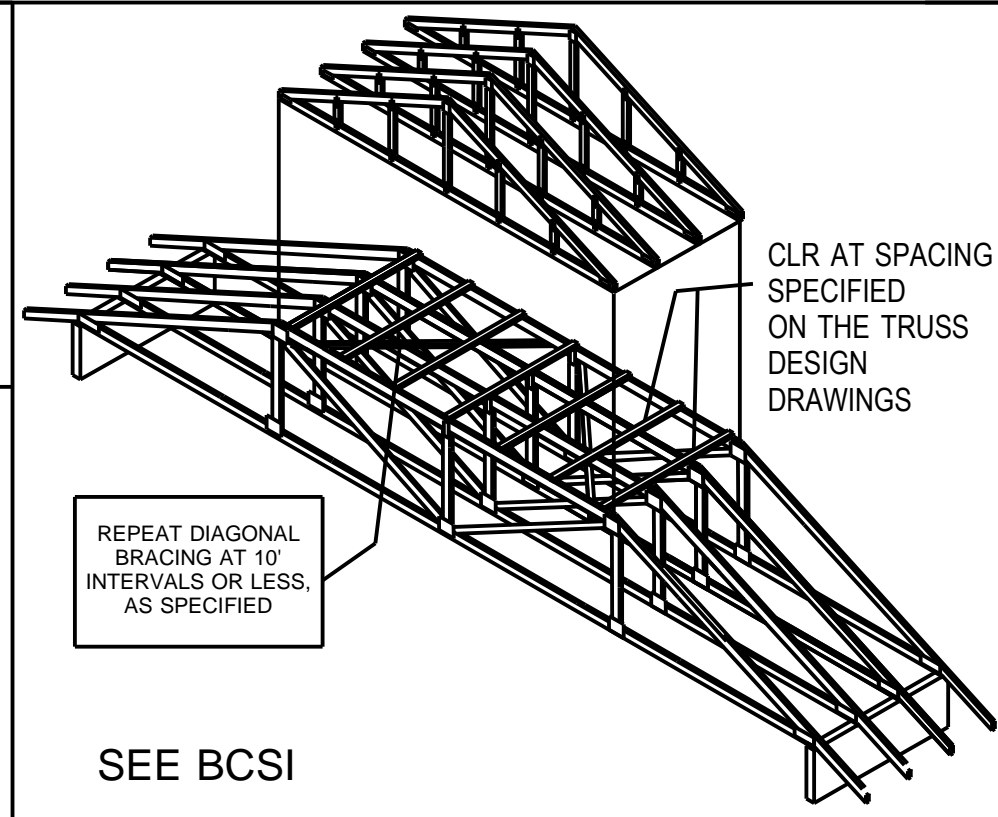
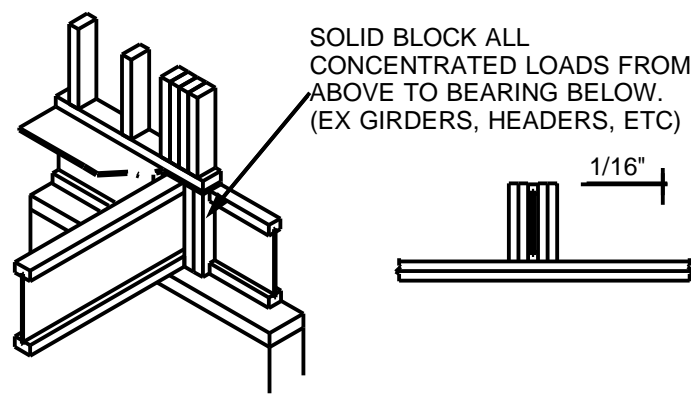
FASTEN TOGETHER 4-PLY TRUSSES WITH SCREWS  
IN LIEU OF BOLTS- SEE DELIVERY FOLDER  
FOR SCREW PATTERN

<input checked="" type="checkbox"/> REVIEWED	<input type="checkbox"/> REJECTED
<input type="checkbox"/> REVISE AND RESUBMIT	<input type="checkbox"/> RUN/SHAS CORRECTED
Corrections or comments made on the shop drawings during this review do not relieve contractor from compliance with requirements of the drawings and specifications. This check is only for review of general conformance with the design concept of the project and general compliance with the information given in the contract documents. The contractor is responsible for: Confirming and correlating all quantities and dimensions; selecting fabrication processes and techniques of construction; coordinating the work with all other trades and performing all work in a safe and satisfactory manner.	
CHOIRETTI ENGINEERING CONSULTANTS	
DATE: 2025-07-30	
BY: JWW	

REVIEWED  
JAB-Porter, Berendzen & Associates  
07-31-2025

AT TRUSS TO TRUSS CONNECTIONS WHERE NO HANGERS ARE SPECIFIED, NAIL TOGETHER WITH (3) 12d TOE-NAILS				
NAIL SIZES:	16d Common - 0.162" x 3-1/2"	10d Common - 0.148" x 3"	10d x 1-1/2" - 0.148" x 1-1/2"	8d Common - 0.131" x 2-1/2"
MODEL NUMBER	HEADER TOP	HEADER FACE	JOIST STRAIGHT	JOIST SLANT
SUR/L26	---	(6) 16d	(6) 10d X 1-1/2"	---
SUR/L210	---	(10) 16d	(10) 10d X 1-1/2"	---
LU26	---	(6) 16d	(4) 10d X 1-1/2"	---
LU28	---	(8) 16d	(6) 10d X 1-1/2"	---
HUS26	---	(14) 16d	---	(6) 16d
HUS28	---	(22) 16d	---	(8) 16d

NOTE:  
LUMBER SPECIALTIES  
WILL NOT ACCEPT ANY BACK CHARGES  
WITHOUT PRIOR WRITTEN AUTHORIZATION  
BEFORE WORK TO CORRECT THE PROBLEM  
HAS BEGUN  
PLEASE CONTACT US @ 1-800-228-0290  
WITH QUESTIONS.



PERMANENT LATERAL RESTRAINT  
AND DIAGONAL BRACING REQUIRED

SEE TRUSS DESIGN DRAWINGS FOR  
LATERAL RESTRAINT;  
CONSULT A BUILDING DESIGNER AND/OR  
BCSI-B3 FOR ADDITIONAL BRACING  
RECOMMENDATIONS

