

**BASIS OF BEARINGS:**

MISSOURI STATE PLANE COORDINATE SYSTEM  
(NAD) 1983, MISSOURI, WEST ZONE

**MISSOURI GEOGRAPHIC REFERENCE SYSTEM  
BENCHMARK:**

BM JA-45, IS A KC METRO ALUMINUM GRS DISK SET IN CONCRETE AND ABOUT 3 INCHES BELOW THE PAVEMENT ON THE SHOULDER OF SE RANSON ROAD. IT IS STAMPED JA45, 1987.

ELEV. = 1046.25

**NOTES:**

ALL CONSTRUCTION ON THIS PROJECT SHALL CONFORM TO THE CITY OF LEES SUMMIT TECHNICAL SPECIFICATIONS.

THE CONTRACTOR IS RESPONSIBLE FOR VERIFYING ALL EXISTING UTILITY LOCATIONS PRIOR TO EXCAVATION.

**STREET LEGEND:**

RESIDENTIAL LOCAL

**RELEASED FOR CONSTRUCTION**  
As Noted on Plan Review

Development Services Department  
Lee's Summit, Missouri  
07/30/2025

**SCHLAGEL**  
ENGINEERS PLANNERS SURVEYORS LANDSCAPE ARCHITECTS  
14920 West 107th Street • Lenexa, Kansas 66215  
(913) 492-5158 • Fax: (913) 492-8400  
WWW.SCHLAGELASSOCIATES.COM  
Missouri State Certificates of Authority  
#E2002003600-F #LAC2001005237 #LS2002008659-F

PREPARED BY:



SCHLAGEL & ASSOCIATES, P.A.

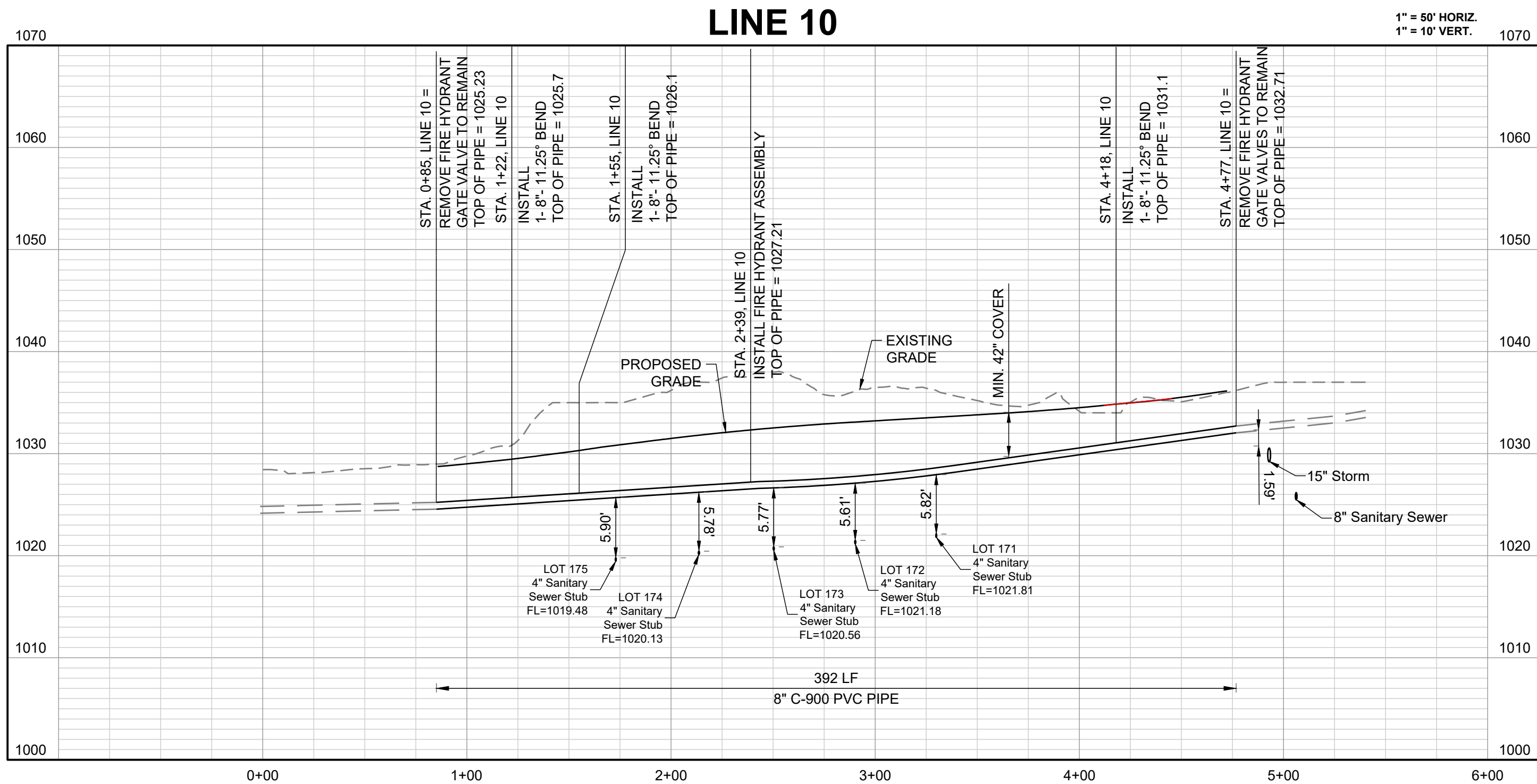
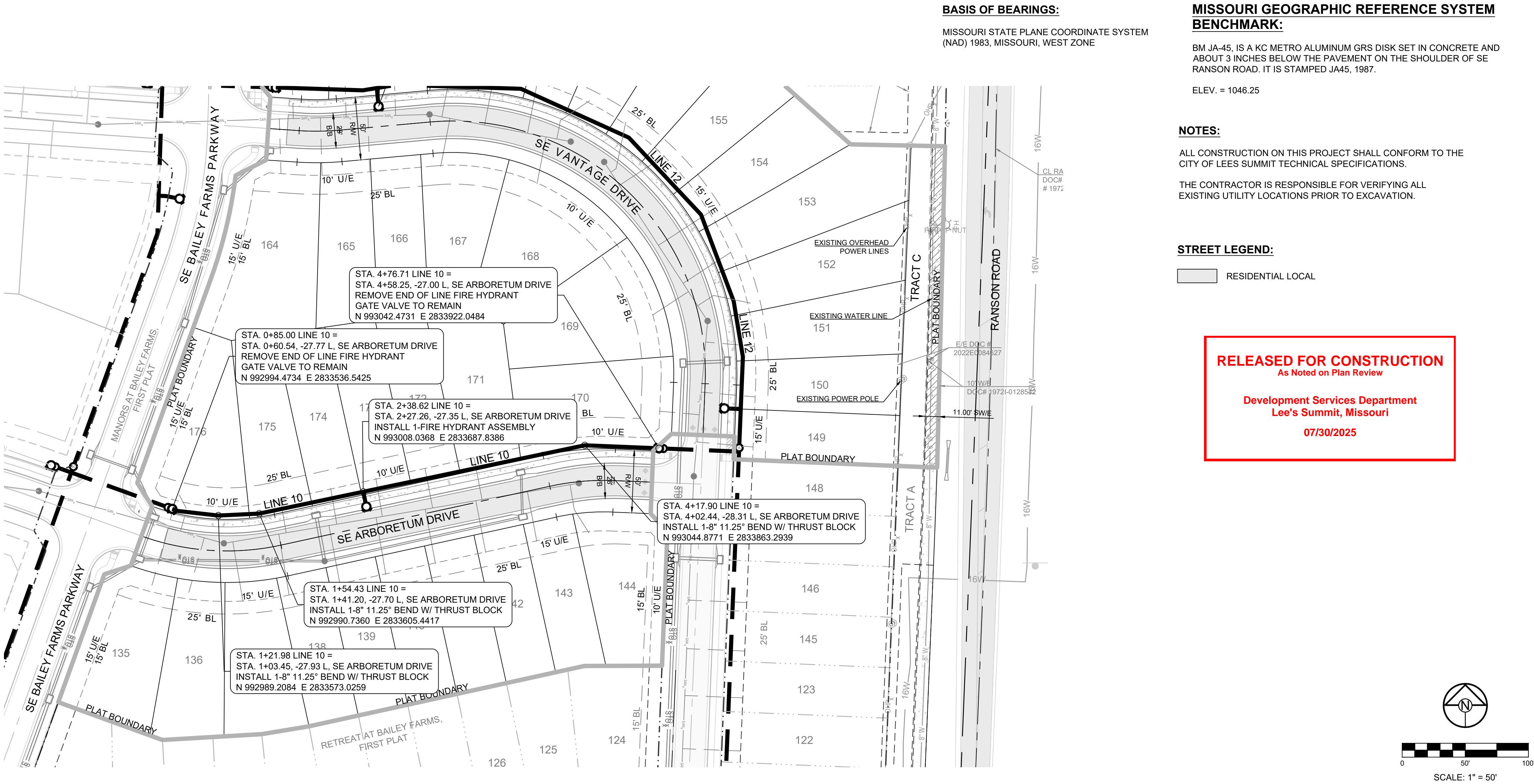
RETREAT AT BAILEY FARMS, SECOND PLAT  
WATER LINE PLANS  
SE BAILEY FARMS PKWY & SE ARBORETUM DR  
LEE'S SUMMIT, MO

GENERAL LAYOUT		REVISION DATE	DESCRIPTION
DRAWN BY:	NCA	A	07/10/2025
CHECKED BY:		A	
	JILL	A	
DATE PREPARED:		A	
	04/09/2025	A	
PROJ. NUMBER:		A	
	25-040	A	

SHEET

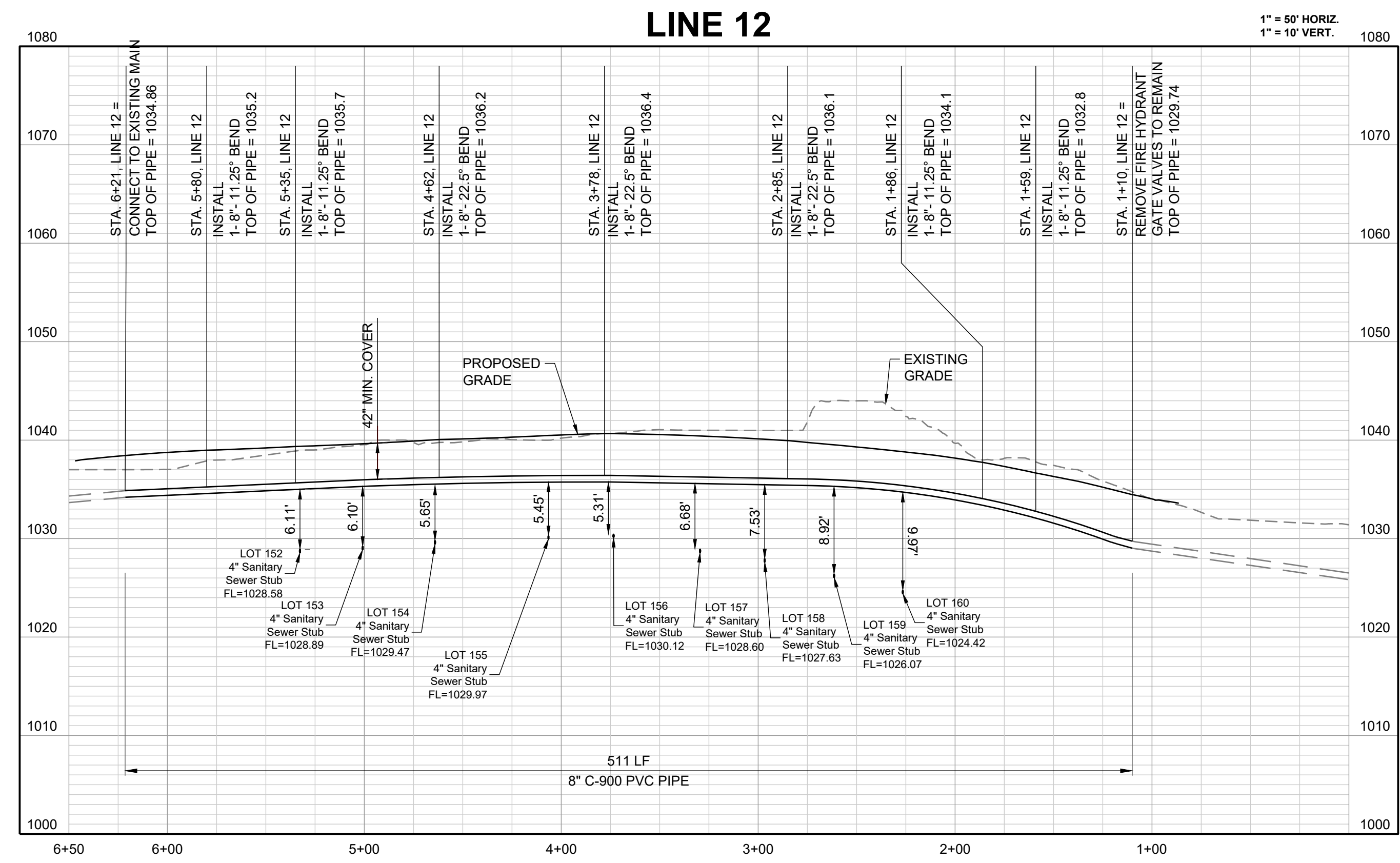
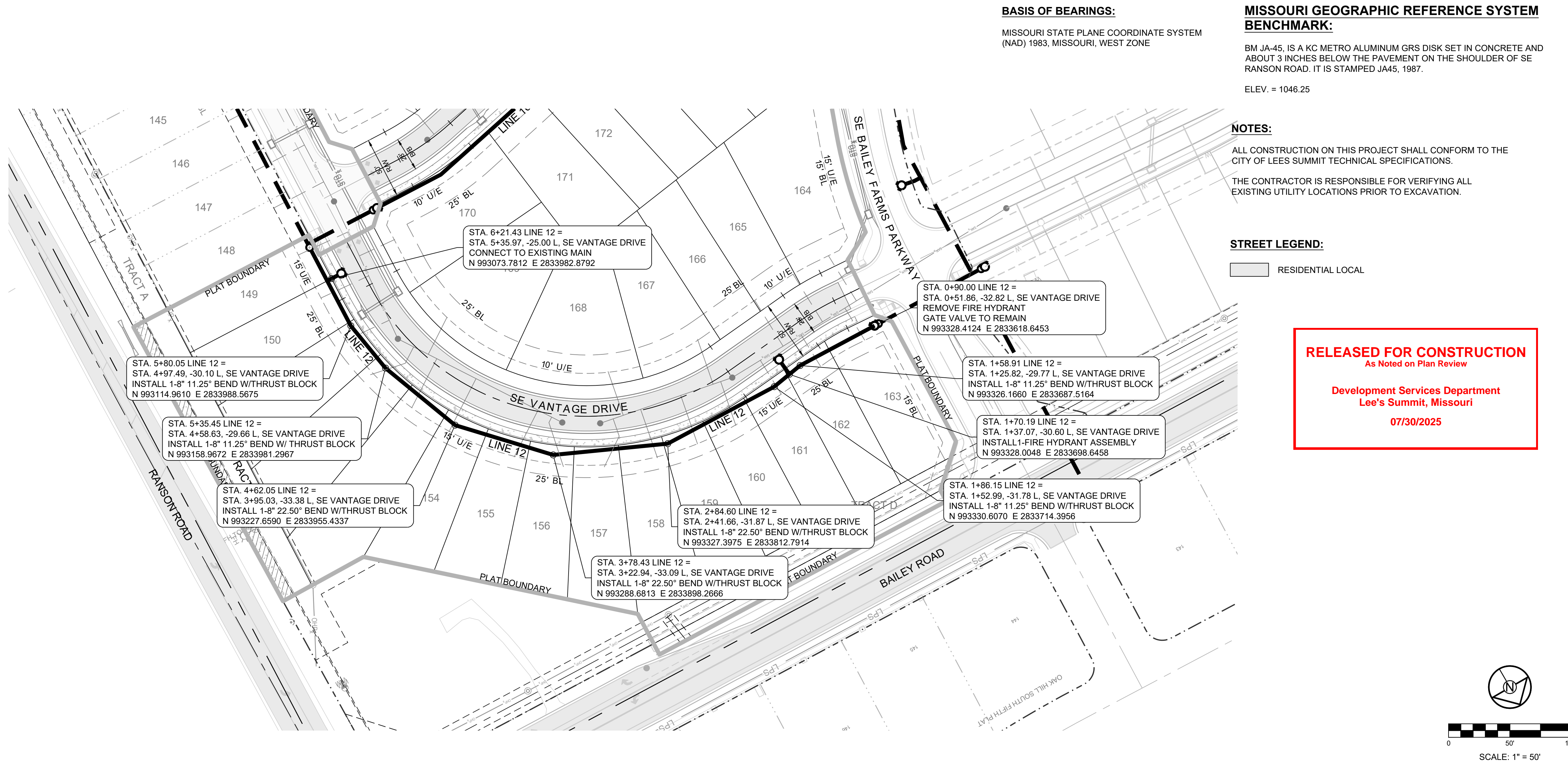
2





DRAWN BY:	REVISION DATE:	DESCRIPTION
NCA	07/10/2025	CITY COMMENTS
CHECKED BY:		
JLL		
DATE PREPARED:		
04/09/2025		
PROJ. NUMBER:		
25-540		





**SCHLAGEL**  
ENGINEERS PLANNERS SURVEYORS LANDSCAPE ARCHITECTS  
14920 West 107th Street • Lenexa, Kansas 66215  
(913) 492-5158 • Fax: (913) 492-8400  
WWW.SCHLAGELASSOCIATES.COM  
Missouri State Certificates of Authority  
#E2002003600-F #LAC2001005237 #LS2002008659-F

PREPARED BY:

STATE OF MISSOURI  
JAMES L. LONG  
NUMBER  
PE-2014010495  
PROFESSIONAL ENGINEER

SCHLAGEL & ASSOCIATES, P.A.

RETREAT AT BAILEY FARMS, SECOND PLAT  
WATER LINE PLANS

SE BAILEY FARMS PKWY & SE ARBORETUM DR  
LEE'S SUMMIT, MO

REVISION DATE	DESCRIPTION
07/10/2025	CITY COMMENTS
07/10/2025	
07/10/2025	
07/10/2025	
07/10/2025	
07/10/2025	
07/10/2025	
07/10/2025	
07/10/2025	
07/10/2025	

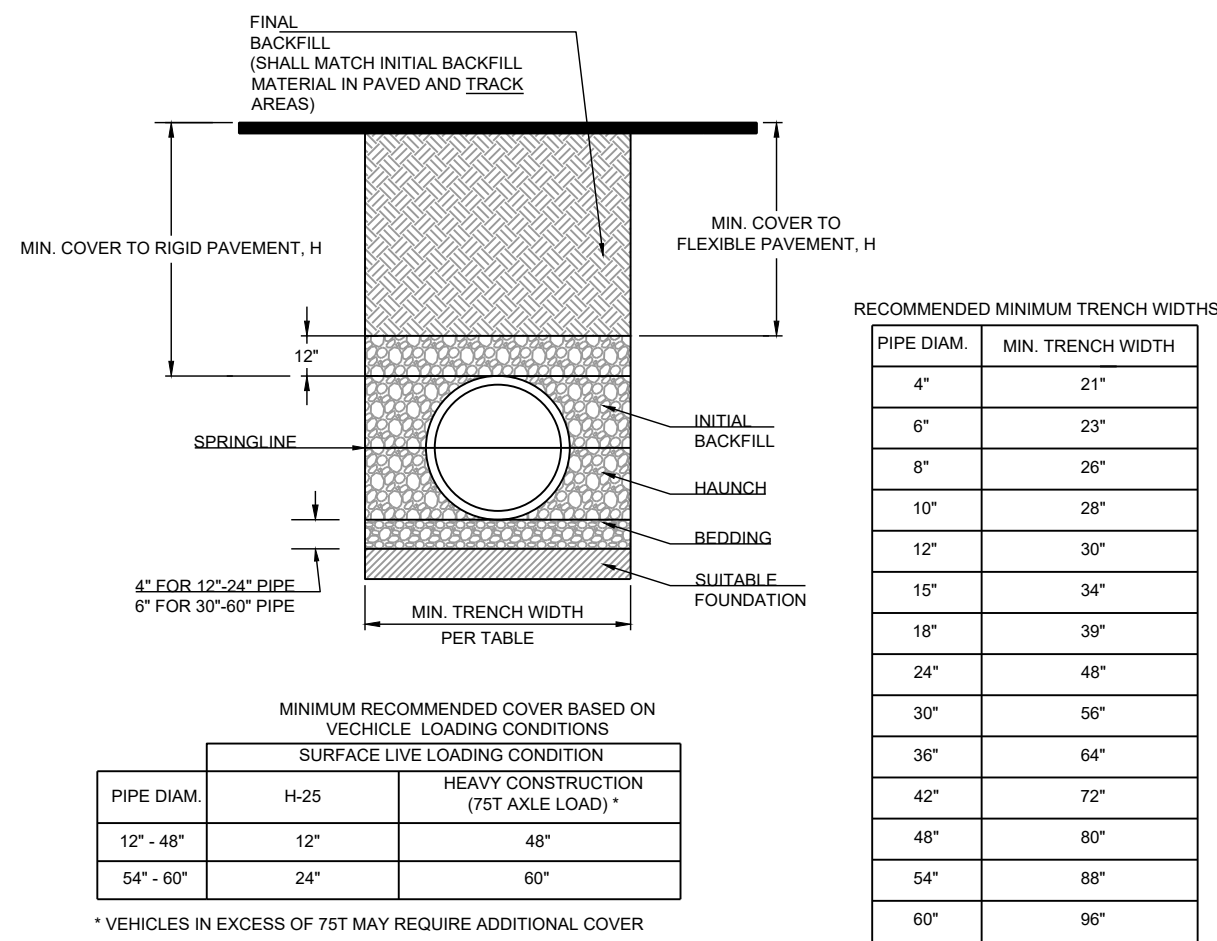
DRAWN BY:	CHECKED BY:	DATE PREPARED:	PROJ. NUMBER:
NCA	JLL	04/09/2025	25-540

LINE 12 PLAN & PROFILE

SHEET

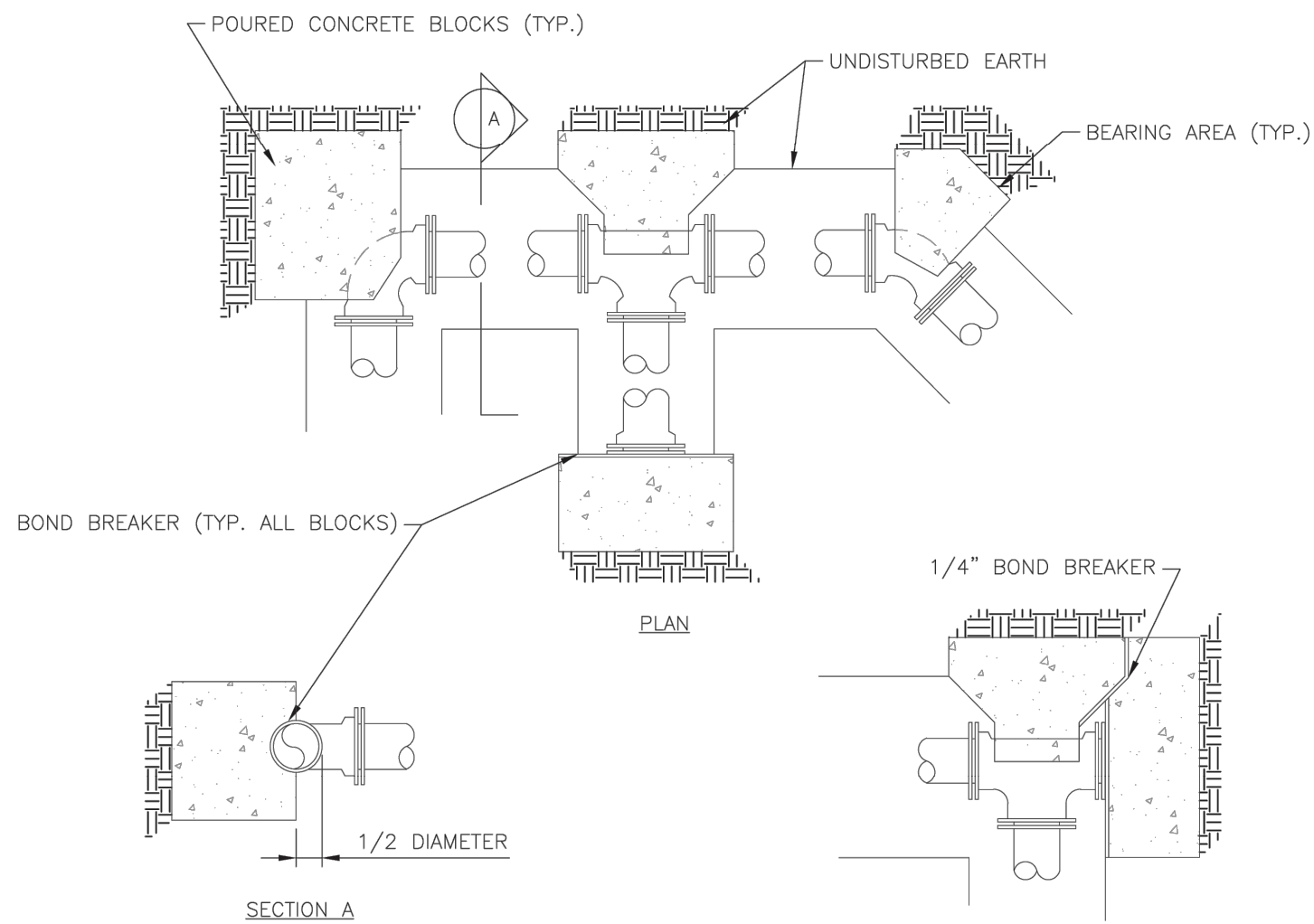
4





- NOTES:
1. ALL PIPE SYSTEMS SHALL BE INSTALLED IN ACCORDANCE WITH ASTM D2321, "STANDARD PRACTICE FOR UNDERGROUND INSTALLATION OF THERMOPLASTIC PIPE FOR SEWERS AND OTHER GRAVITY FLOW APPLICATIONS", LATEST EDITION.
  2. MEASURES SHOULD BE TAKEN TO PREVENT MIGRATION OF NATIVE FINES INTO BACKFILL MATERIAL, WHEN REQUIRED.
  3. FOUNDATION: WHERE THE TRENCH BOTTOM IS UNSTABLE, THE CONTRACTOR SHALL EXCAVATE TO A DEPTH REQUIRED BY THE ENGINEER AND REPLACE WITH SUITABLE MATERIAL AS SPECIFIED BY THE ENGINEER, AS AN ALTERNATIVE AND AT THE DISCRETION OF THE DESIGN ENGINEER, THE TRENCH BOTTOM MAY BE STABILIZED USING A GEOTEXTILE MATERIAL.
  4. BEDDING: SUITABLE MATERIAL SHALL BE CLASS I, II OR III. THE CONTRACTOR SHALL PROVIDE DOCUMENTATION FOR MATERIAL SPECIFICATION TO ENGINEER, UNLESS OTHERWISE NOTED BY THE ENGINEER. MINIMUM BEDDING THICKNESS SHALL BE 4" (100mm) FOR 4"-24" (100mm-600mm), 6" (150mm) FOR 30"-60" (750mm-3000mm).
  5. INITIAL BACKFILL: SUITABLE MATERIAL SHALL BE CLASS I, II OR III IN THE PIPE ZONE EXTENDING NOT LESS THAN 6" ABOVE CROWN OF PIPE. THE CONTRACTOR SHALL PROVIDE DOCUMENTATION FOR MATERIAL SPECIFICATION TO ENGINEER. MATERIAL SHALL BE INSTALLED AS REQUIRED IN ASTM D2321, LATEST EDITION.
  6. MINIMUM COVER: MINIMUM COVER, H, IN NON-TRAFFIC APPLICATIONS (GRASS OR LANDSCAPE AREAS) IS 12" FROM THE TOP OF PIPE TO GROUND SURFACE. ADDITIONAL COVER MAY BE REQUIRED TO PREVENT FLOATATION. FOR TRAFFIC APPLICATIONS, MINIMUM COVER, H, IS 12" UP TO 48" DIAMETER PIPE AND 24" OF COVER FOR 54"-60" DIAMETER PIPE, MEASURED FROM TOP OF PIPE TO BOTTOM OF FLEXIBLE PAVEMENT OR TO TOP OF RIGID PAVEMENT.

REQUIRED CONCRETE BEARING AREA (SQUARE FEET - SF)					
NOM. DIA. (INCHES)	180 TEE, PLUG	90 BEND	45 BEND	22.5 BEND	11.25 BEND
6	4.7	6.7	4.0	4.0	4.0
8	8.4	11.8	6.4	4.0	4.0
10	13.1	18.5	10.0	5.1	4.0
12	18.8	26.7	14.4	7.4	4.0
14	25.7	36.3	19.6	10.0	5.0
16	33.5	47.4	25.6	13.1	6.6
18	42.4	REST. JT.	32.5	16.5	8.3
20	REST. JT.	REST. JT.	40.1	20.4	10.3
24	REST. JT.	REST. JT.	REST. JT.	29.4	14.8



- NOTES:
1. ALL BENDS WITHOUT RESTRAINED JOINTS SHALL HAVE CONCRETE THRUST BLOCKS INSTALLED FOR RESTRAINT.
  2. MEGA LUGS MAY BE USED ONLY IN CONJUNCTION WITH CONCRETE THRUST BLOCKING.
  3. BEARING AREA MUST BE AGAINST UNDISTURBED SOIL.
  4. DO NOT COVER JOINTS OR BOLTS (WHERE APPLICABLE) WITH CONCRETE.

LS

LEE'S SUMMIT

MISSOURI

PUBLIC WORKS ENGINEERING DIVISION | 220 SE GREEN STREET | LEE'S SUMMIT, MO 64063

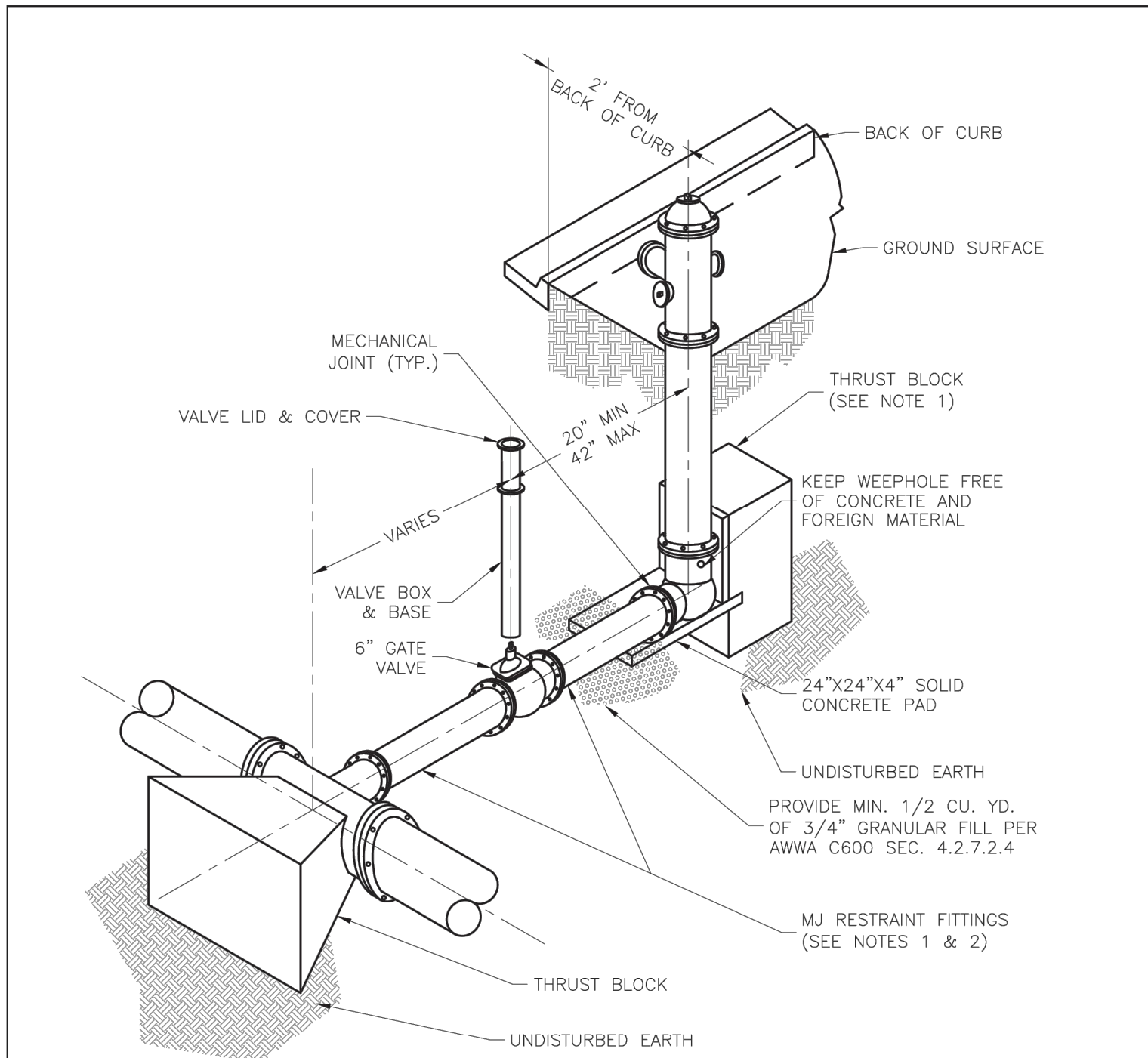
Date: 01/2016

Drawn By: JN

Checked By: DL

HORIZONTAL THRUST BLOCK

WAT-1



- NOTES:
1. WHEN RETAINER GLANDS ARE USED IN LIEU OF MECHANICAL JOINT (MJ) RESTRAINT FITTINGS, HORIZONTAL THRUST BLOCKS ARE REQUIRED.
  2. GATE VALVE MAY BE BOLTED DIRECTLY TO MJ RESTRAINT TEE.
  3. SEE APPROVED PRODUCTS LIST FOR WATER UTILITIES FOR FIRE HYDRANT, VALVES, VALVE BOX LID, AND COVER.
  4. BOTTOM HYDRANT FLANGE SHALL BE 2" TO 6" ABOVE FINISHED GRADE.
  5. FOR STREETS WITHOUT CURBS FIRE HYDRANTS SHALL BE PLACED WITHIN 1 FOOT OF THE R/W LINE, BUT NOT MORE THAN 10' FROM EDGE OF PAVEMENT. FIRE HYDRANT SHALL NOT BE PLACED IN BOTTOM OF DITCH.
  6. HYDRANT SHALL BE ROTATED AS DIRECTED BY INSPECTOR.

LS

LEE'S SUMMIT

MISSOURI

PUBLIC WORKS ENGINEERING DIVISION | 220 SE GREEN STREET | LEE'S SUMMIT, MO 64063

Date: 01/2016

Drawn By: JN

Checked By: DL

HYDRANT - STRAIGHT SET

WAT-7

RELEASED FOR CONSTRUCTION  
As Noted on Plan Review

Development Services Department  
Lee's Summit, Missouri

07/30/2025