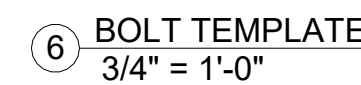
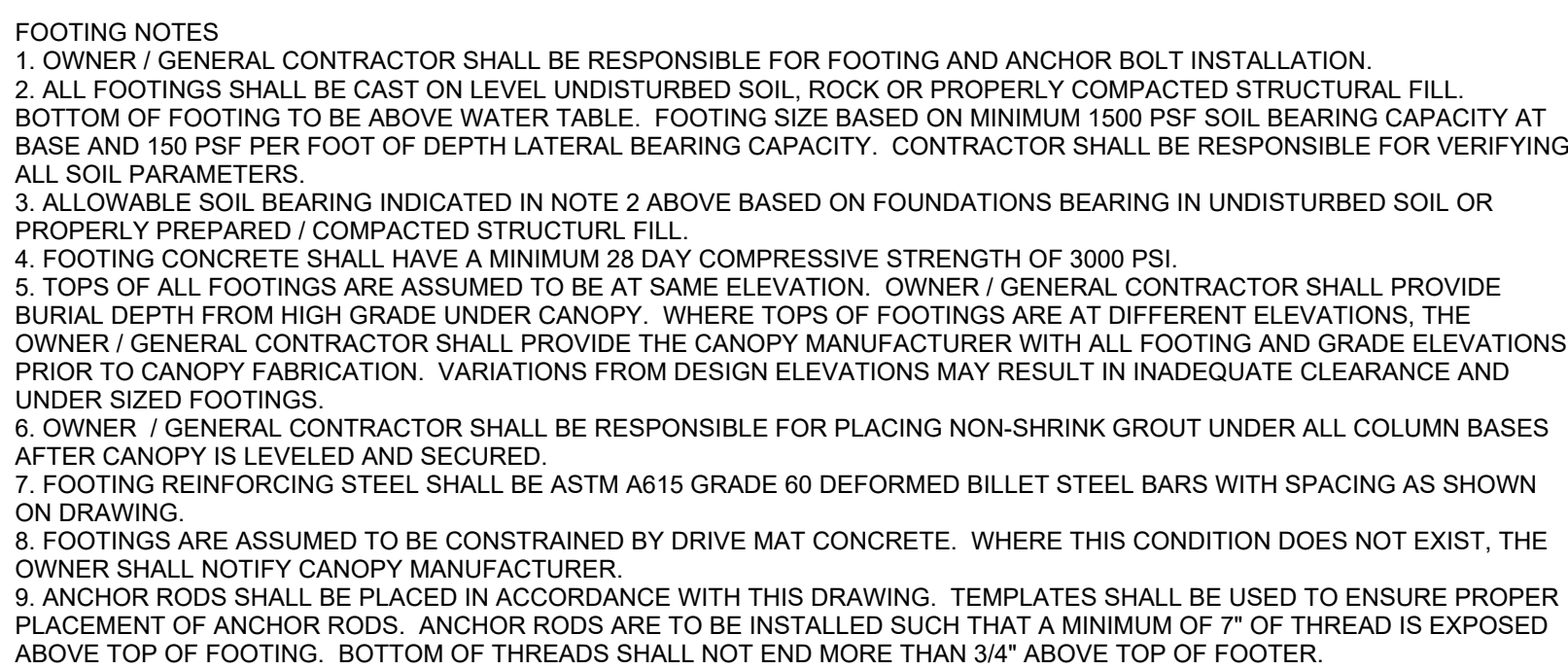
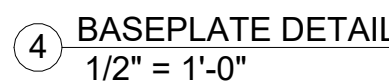
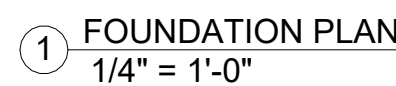


WATERWAY
XPT CANOPY
LEE'S SUMMIT, MO

16'-6" x 64'-6" (3) COLUMN CANOPY

JOB NUMBER: 464110

SHEET NUMBER: CA1



ALL INFO MUST BE KNOWN BEFORE FABRICATION BEGINS
PLEASE SUBMIT TO: drafting@fashioninc.com

REVISION HISTORY		BY	DATE	REV.	DESCRIPTION



DAVID E. SCHATTE, PE
10609 99TH STREET
OVERLAND PARK, KS 66214
LICENSE # E-27047



1019 E. North Street
Ottawa, Kansas 66067
Phone: 785.242.8111

THESE PLANS ARE SUBJECT TO
FEDERAL COPYRIGHT LAWS
ANY USE OF SAME WITHOUT THE
EXPRESS WRITTEN PERMISSION
OF FASHION INC. IS PROHIBITED

SITE:

WATERWAY
XPT CANOPY
LEE'S SUMMIT, MO

16'-6" x 64'-6" (3) COLUMN CANOPY

ISSUE DATE: 8/13/24 DRAWN BY: TJH CHECKED BY: DES

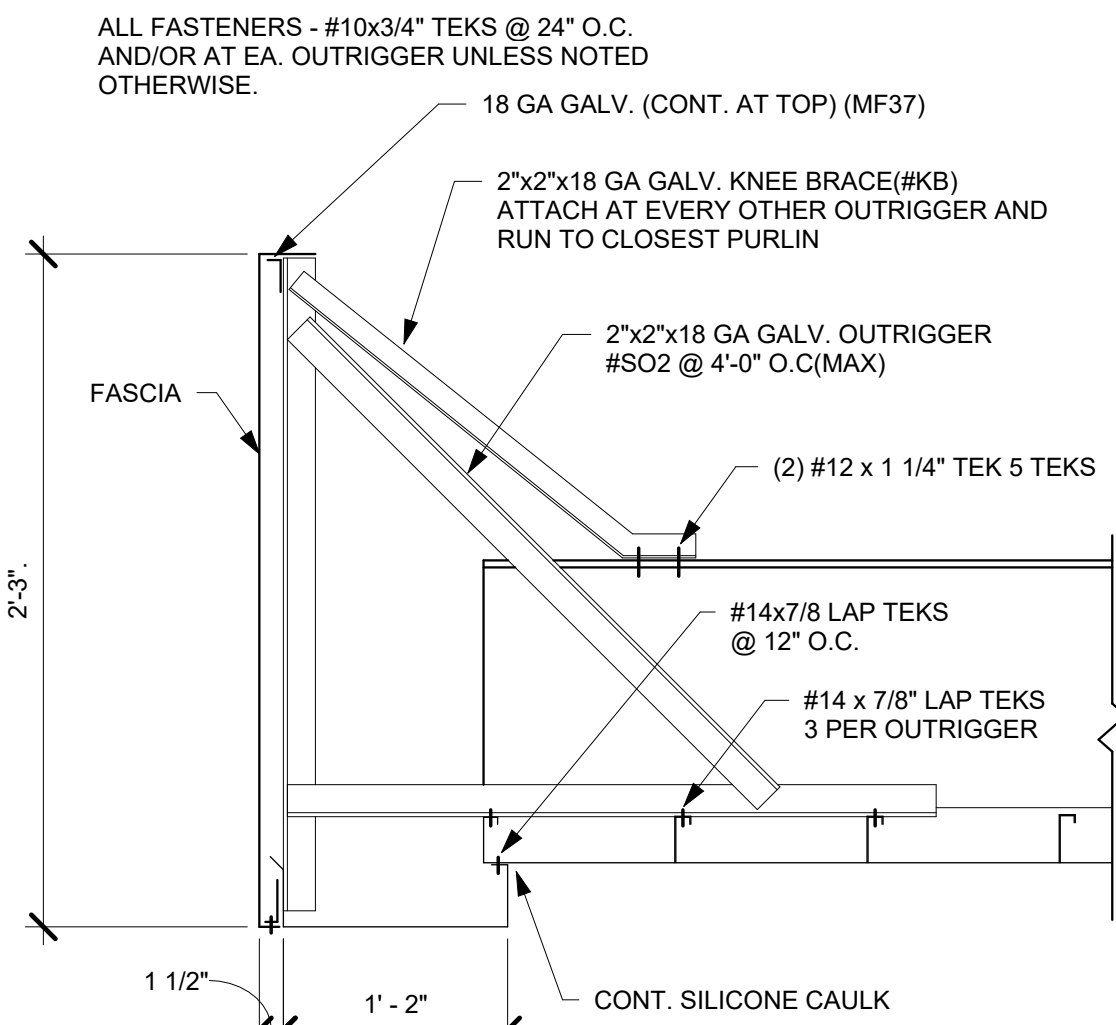
JOB NUMBER: 464110

SHEET TITLE:

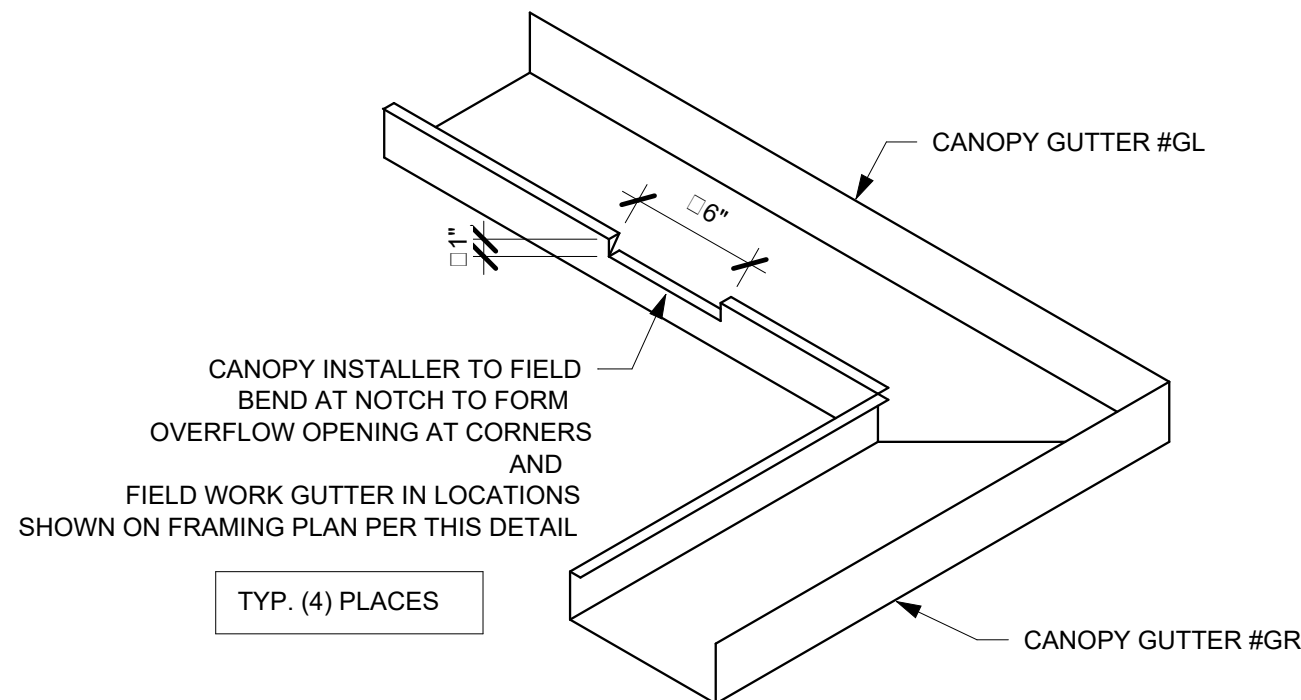
FRAMING PLAN

SHEET NUMBER:

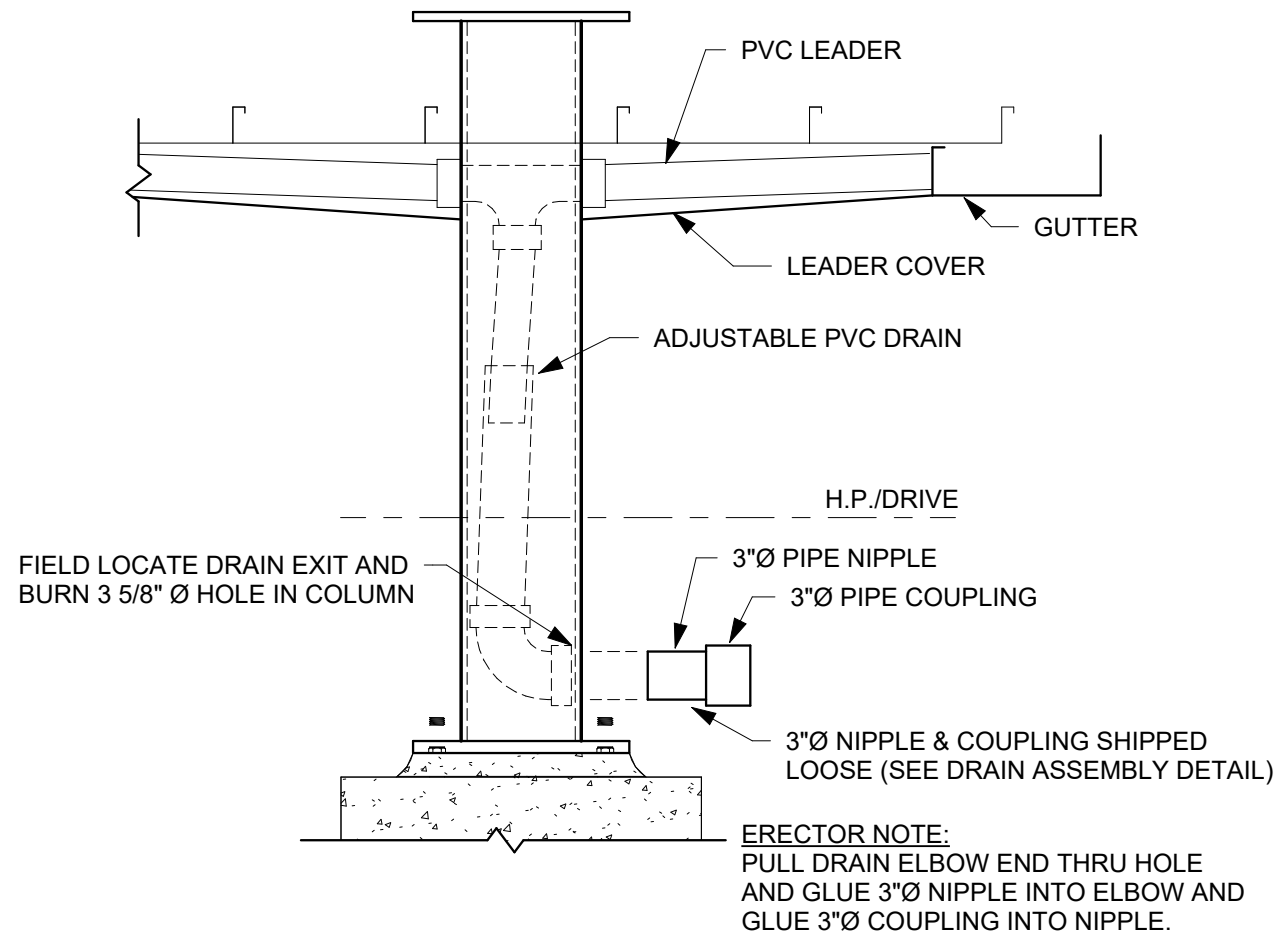
CA2



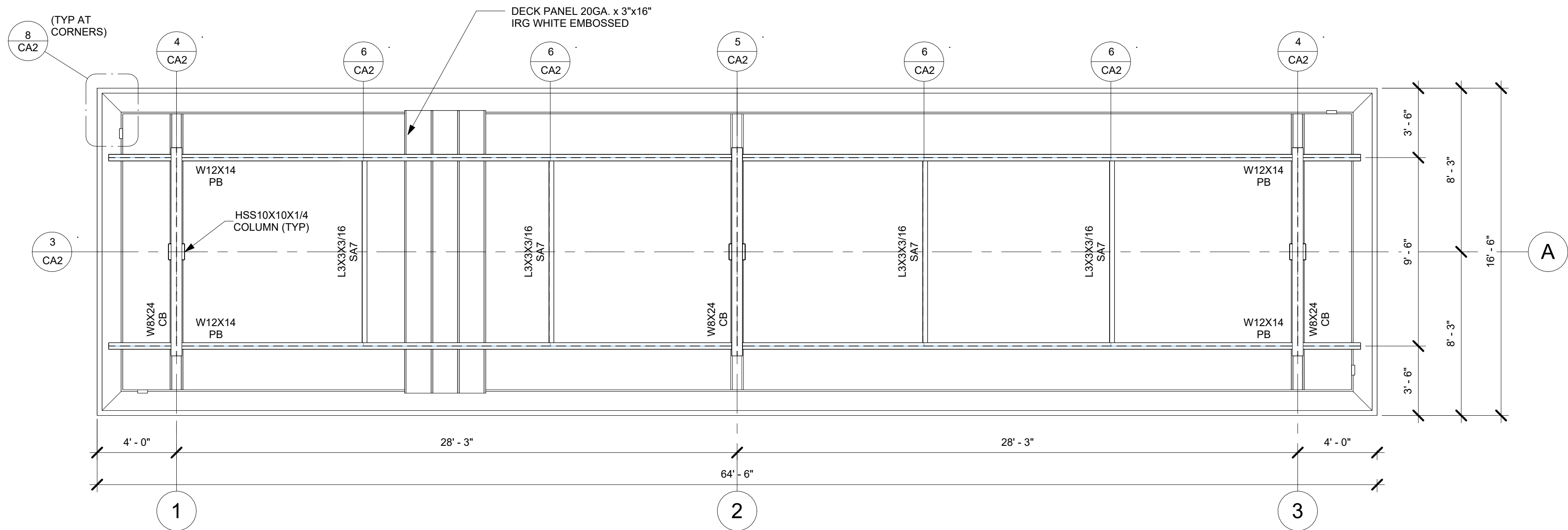
7 TYP. 1 1/2 ACM FASCIA SECTION
1" = 1'-0"



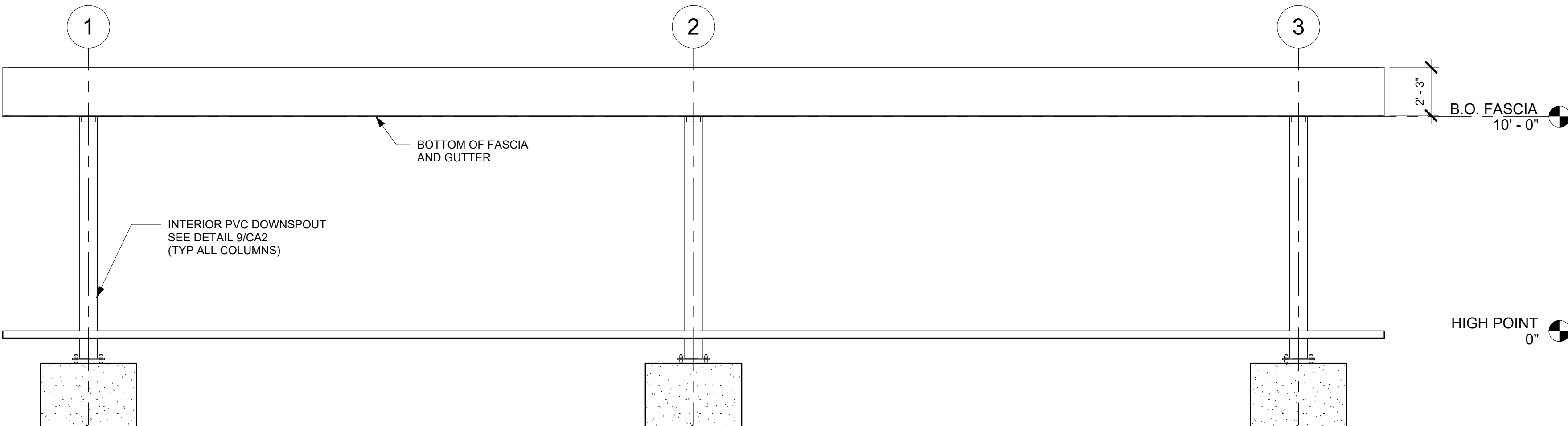
8 G2 SECONDARY OVERFLOW DETAIL
3/4" = 1'-0"



9 G9 DRAIN DETAIL (BELOW GRADE)
3/4" = 1'-0"



1 FRAMING PLAN
1/4" = 1'-0"



2 FRONT
1/4" = 1'-0"

STEEL NOTES
1. DESIGN, FABRICATION AND ERECTION OF STRUCTURAL STEEL SHALL CONFORM TO THE LATEST AISC SPECIFICATIONS. DESIGN, FABRICATION AND ERECTION OF COLD FORMED STEEL SECTIONS SHALL CONFORM TO THE LATEST AISI SPECIFICATIONS.
2. STRUCTURAL MATERIALS:
WIDE FLANGE SECTIONS - ASTM A992 OR A572 GRADE 50 (Fy = 50 KSI)
ANGLES / CHANNELS - ASTM A36 (Fy = 36 KSI)
HOLLOW STRUCTURAL SECTIONS (TUBE) - ASTM A500 GRADE B (Fy = 46 KSI)
PIPE SECTIONS - ASTM A53, GRADE B (Fy = 35 KSI)
PLATE - ASTM A36 (Fy = 36 KSI)
ROOF DECK - ASTM A653, GRADE 50 (Fy = 50 KSI), GALVANIZED (G60) WITH FULL COAT OF POLYESTER PAINT BAKED ON OVER AN EPOXY PRIMER
STEEL OUTRIGGERS - ASTM A653 GR. CS (Fy = 25 KSI), GALVANIZED (G90) PER ASTM 924
STRUCTURAL BOLTS - ASTM F3125 GR A325
ANCHOR BOLTS - ASTM F1554 GR. 55 (Fy = 55 KSI)
3. WELDING OF STRUCTURAL STEEL SHALL BE IN ACCORDANCE WITH LATEST ANSI / AWS D1.1
4. FIELD CONNECTIONS SHALL BE BOLTED CONNECTIONS UNLESS SPECIFIED ON DRAWING.
5. ALL STRUCTURAL BOLTED CONNECTIONS SHALL USE ASTM F3125 GR A325 BOLTS. BOLTED JOINTS SHALL BE TIGHTENED TO SNUG TIGHT PER LATEST RCSC SPECIFICATION.
6. STRUCTURAL STEEL SHALL BE SHOP COATED WITH A RED-OXIDE RUST INHIBITIVE PRIMER. FIELD TOUCH-UP, FINISH PAINTING, AND MAINTENANCE SHALL BE THE RESPONSIBILITY OF THE OWNER (UNLESS OTHERWISE SPECIFIED).
7. DESIGN LOADS PER ASCE7-16 AND 2018 IBC:

RISK CATEGORY II

ROOF LIVE LOAD = 20 PSF (ERECTION & MAINTENANCE ONLY - NO PUBLIC ACCESS)

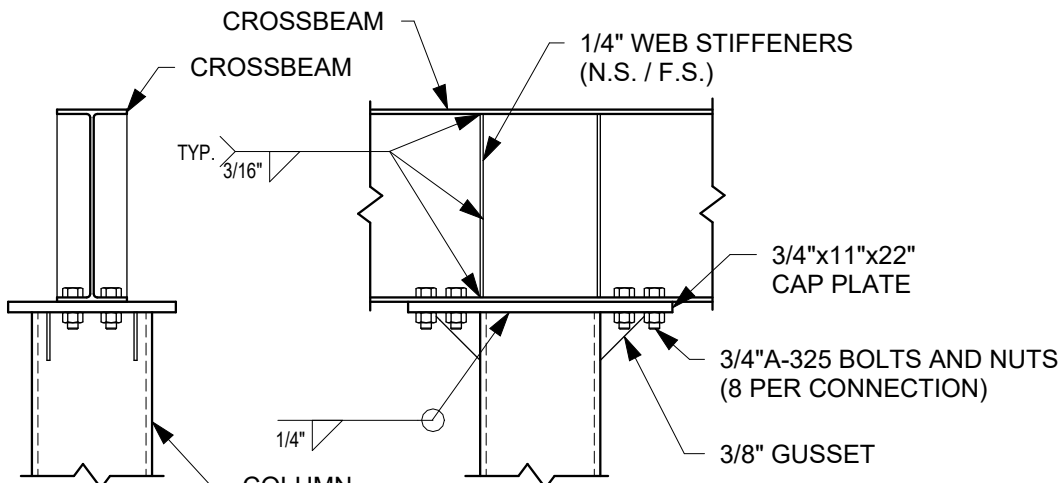
FLAT ROOF SNOW LOAD = 25 PSF
BASED ON GROUND SNOW LOAD = 25 PSF
Is = 1.0; C1 = 1.2; Ce = 1.0

WIND LOADS:
LATERAL = +/- 25 PSF (MWFRS)(USING 0.6 W FOR ASD)
UPLIFT = +/- 20 PSF (MWFRS)(USING 0.6 W FOR ASD)
BASED ON 120 MPH ULTIMATE WIND SPEED PER ASCE 7 EXPOSURE "B"
IMPORTANCE FACTOR = 1.0; OPEN STRUCTURE, NO INTERNAL PRESSURE

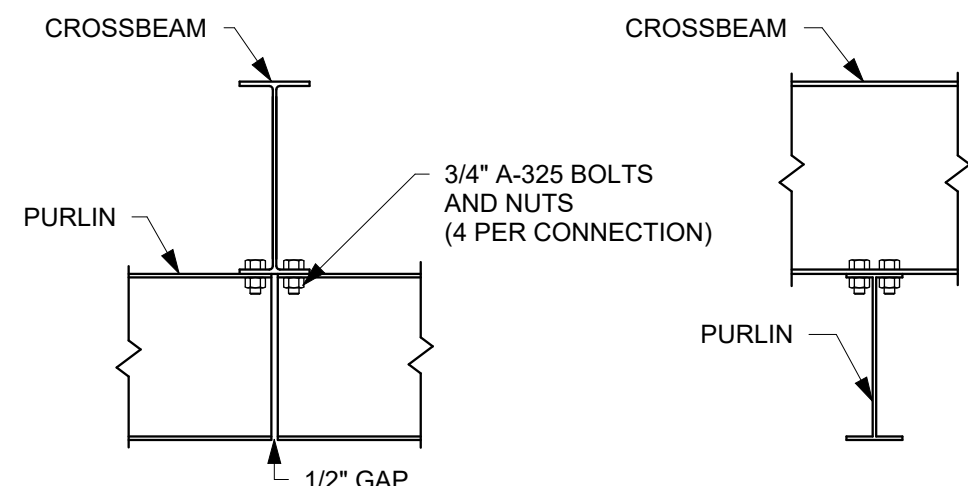
SEISMIC LOADS:
SEISMIC RISK CATEGORY II, SITE CLASS "D", SEISMIC DESIGN CATEGORY "B"
Sds = 0.11G (Ss = 0.10G, Fa = 1.6), Sd1 = 0.11G (S1 = 0.07G, Fv = 2.4)
SEISMIC FORCE RESISTING SYSTEM IS INVERTED PENDULUM CANTERLEVERED COLUMN, R = 2.0
Cs = 0.055 DESIGN BASE SHEAR, Cs x W = 0.36K/COLUMN USING EQUIVALENT LATERAL FORCE PROCEDURE

DEAD LOADS:
DECK / GUTTER / LIGHTS - 5 PSF
FASCIA - 10 PLF
STRUCTURAL STEEL - SELF WT
CONCRETE - 145 PCF

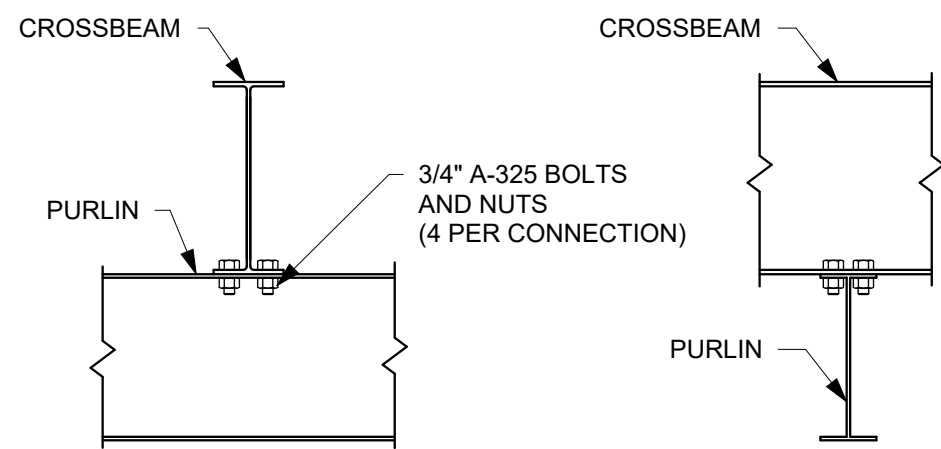
8. CANOPY USE GROUP "M" / CONSTRUCTION TYPE II-B



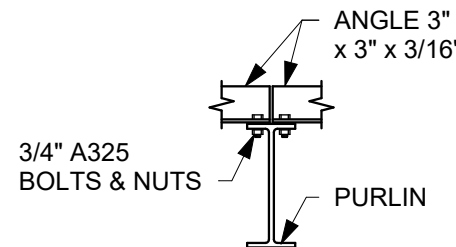
3 S10 - CB TO CL 8 BOLT W/ GUSSETS
3/4" = 1'-0"



5 S24 CB TO PB
3/4" = 1'-0"



4 S20 CB TO PB
3/4" = 1'-0"



6 S30 ANGLE BRACE
3/4" = 1'-0"