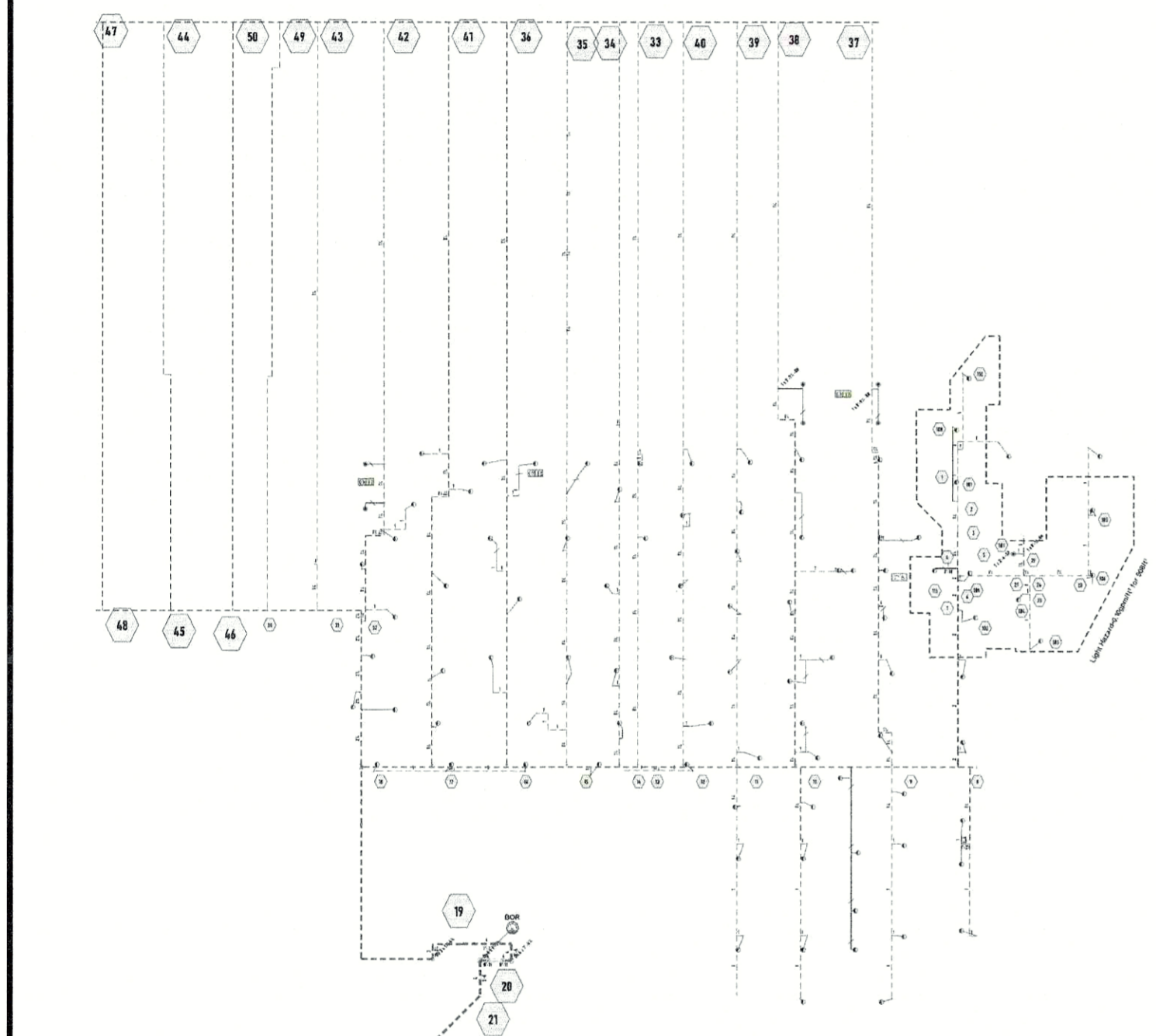


GENERAL NOTE
*ALL CEILINGS TO BE 9'-0 AFF UNLESS NOTED OTHERWISE
*ALL SPRINKLER SYSTEMS SHALL CONFORM WITH THE REQUIREMENTS OF NFPA
*ALL SECTIONS OF TRAPPED PIPING TO HAVE AUXILIARY DRAINS WHERE REQUIRED PER NFPA
*ALL HANGER TO BE INSTALLED PER REQUIREMENTS OF NFPA
*PENETRATIONS THROUGH FIRE RATED WALL SHALL BE FIRE CAULKED AS REQUIRED PER CONTRACT
*THE OWNER SHALL BE RESPONSIBLE FOR PROVIDING ADEQUATE HEAT TO PREVENT WATER FILLED PIPE FROM FREEZING
*AMERICAN FIRE SPRINKLER CORP. IS NOT CONTRACTED TO PROVIDE THE ALARM WIRING TO THE CENTRAL STATION ALARM SYSTEM
*THREADED PIPING 1" - 2" SHALL BE SCH 40 BLACK STEEL WITH DUCTILE THREADED FITTINGS
*GROOVED PIPING 1" - 2" SHALL BE SCH 40 BLACK STEEL WITH VICTAULIC GROOVED FITTINGS
*GROOVED PIPING 2 1/2" - 8" SHALL BE SCH 40 BLACK STEEL WITH VICTAULIC GROOVED FITTINGS
*SYSTEM PIPE SHALL BE SIZED PER HYDRAULIC CALCULATION

BUILDING CODE ANALYSIS
*BUILDING USE: HOSPITAL
*CONSTRUCTION TYPE: 1-A
*OCCUPANCY GROUP IS: S - BUSINESS
*AREA OF WORK: 7,530 +/- SF



FIRE PROTECTION CODE ANALYSIS
*SYSTEM DESIGN IS BASED ON 2018 IBC, NFPA 13 2016
*SPRINKLER DESIGN DEMANDS SHALL BE AS FOLLOWS
*ALL SPACES ARE LIGHT HAZARD UNLESS NOTED OTHERWISE ON DRAWINGS
*LIGHT HAZARD: 0.10 GPM/SF OVER 1500 SQ. FT. + 100 GPM HOSE ALLOWANCE
*ORDINARY HAZARD GROUP 1: 0.15 GPM/SF OVER 1500 SQ. FT. + 250 GPM HOSE ALLOWANCE
*ORDINARY HAZARD GROUP 2: 0.20 GPM/SF OVER 1500 SQ. FT. + 250 GPM HOSE ALLOWANCE
*DESIGN AREAS UTILIZE QUICK RESPONSE SPRINKLER AREA REDUCTION IN ACCORDANCE WITH NFPA 13

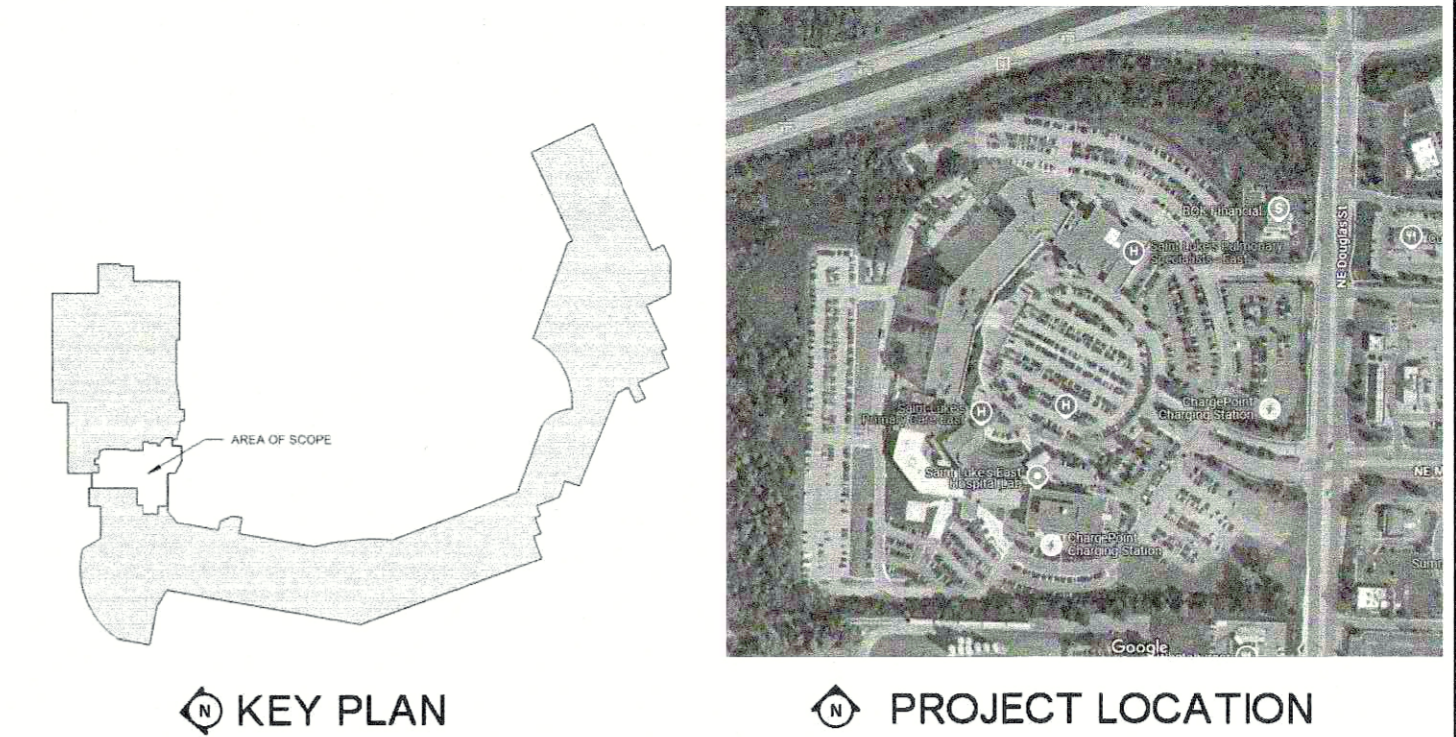
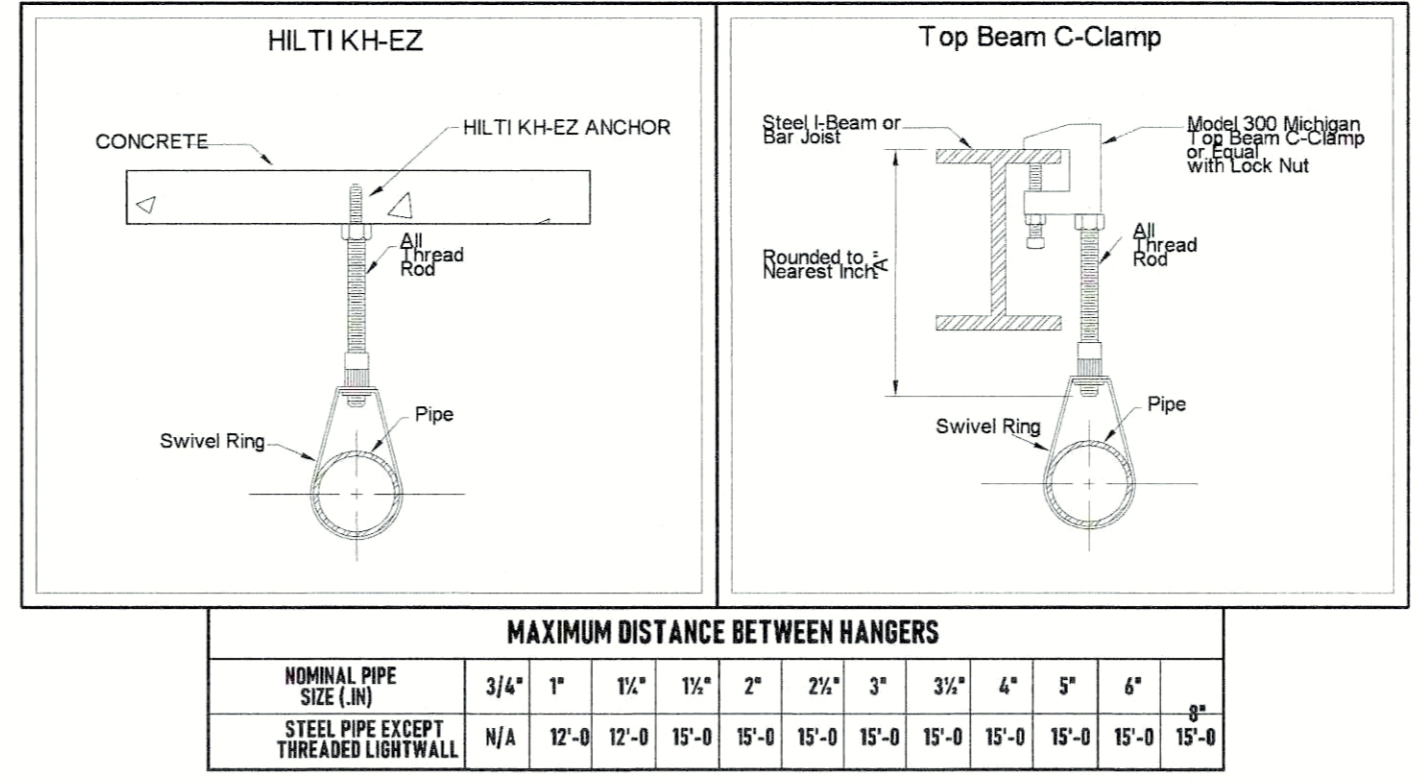
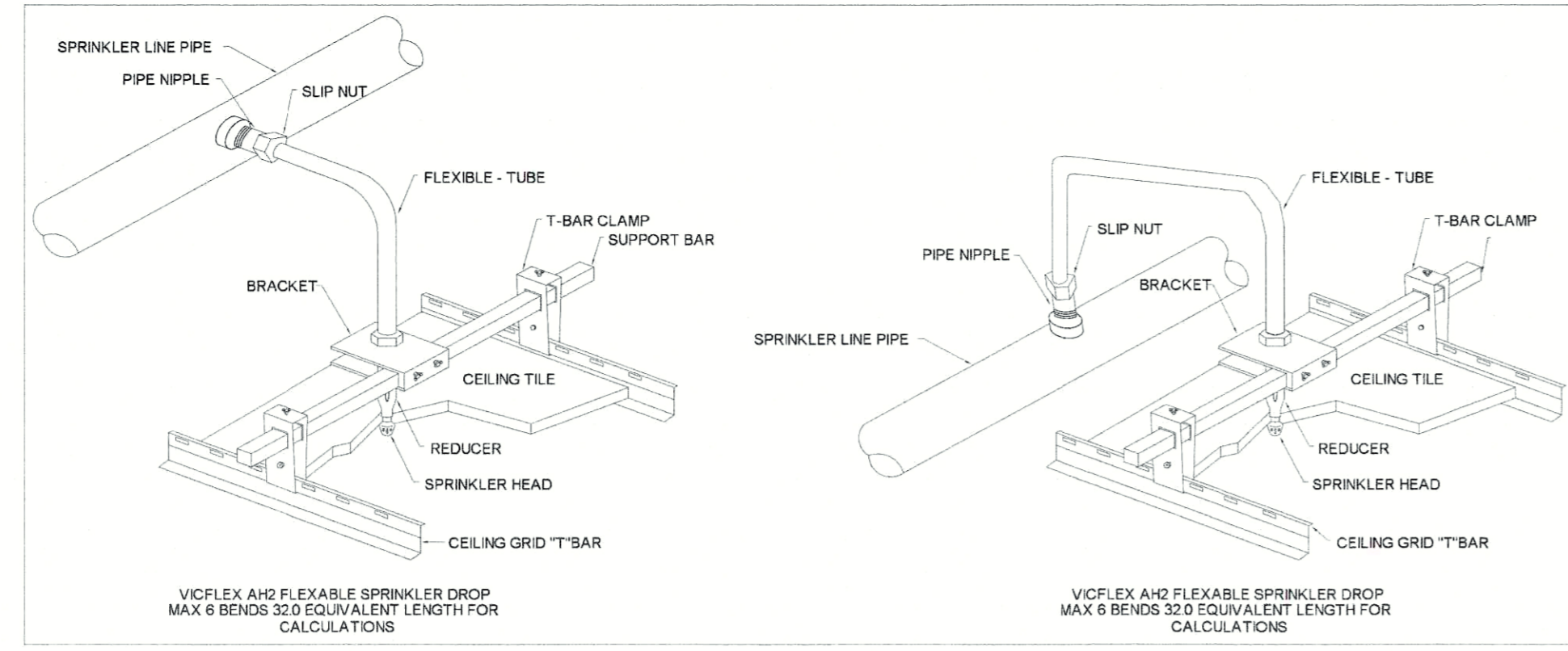


Supply Flow Test Data	
Test Conducted By	CITY OF LEE'S SUMMIT
Date of Test	7/9/2025
Time of Test	8:30am
Location	ST. LUKES EAST HOSPITAL
Static Pressure	104.000
Residual Pressure:	88.000
Flow	2100.00

HYDRAULIC REFERENCE
SCALE: N.T.S.

LEGEND	
	NOT IN CONTRACT
	EXISTING PIPE
	NEW PIPE
A	ADD SPRINKLER
R	RELOCATE / REPLACE SPRINKLER

SPRINKLER LEGEND										
SYMBOL	QUANTITY	MANUFACTURER	SIN	K-FACTOR	TYPE	SIZE	FINISH	TEMPERATURE	RESPONSE	NOTES
	91	VIKING	VK4621	5.6	CONC. PENDENT	1/2"	WHITE	200°	QUICK	
	7	VIKING	VK3001	5.6	UPRIGHT	1/2"	BRASS	200°	QUICK	ON SPRIG
TOTAL	98									

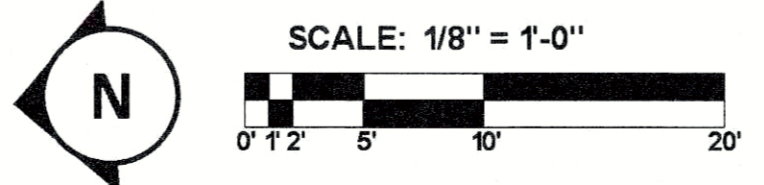
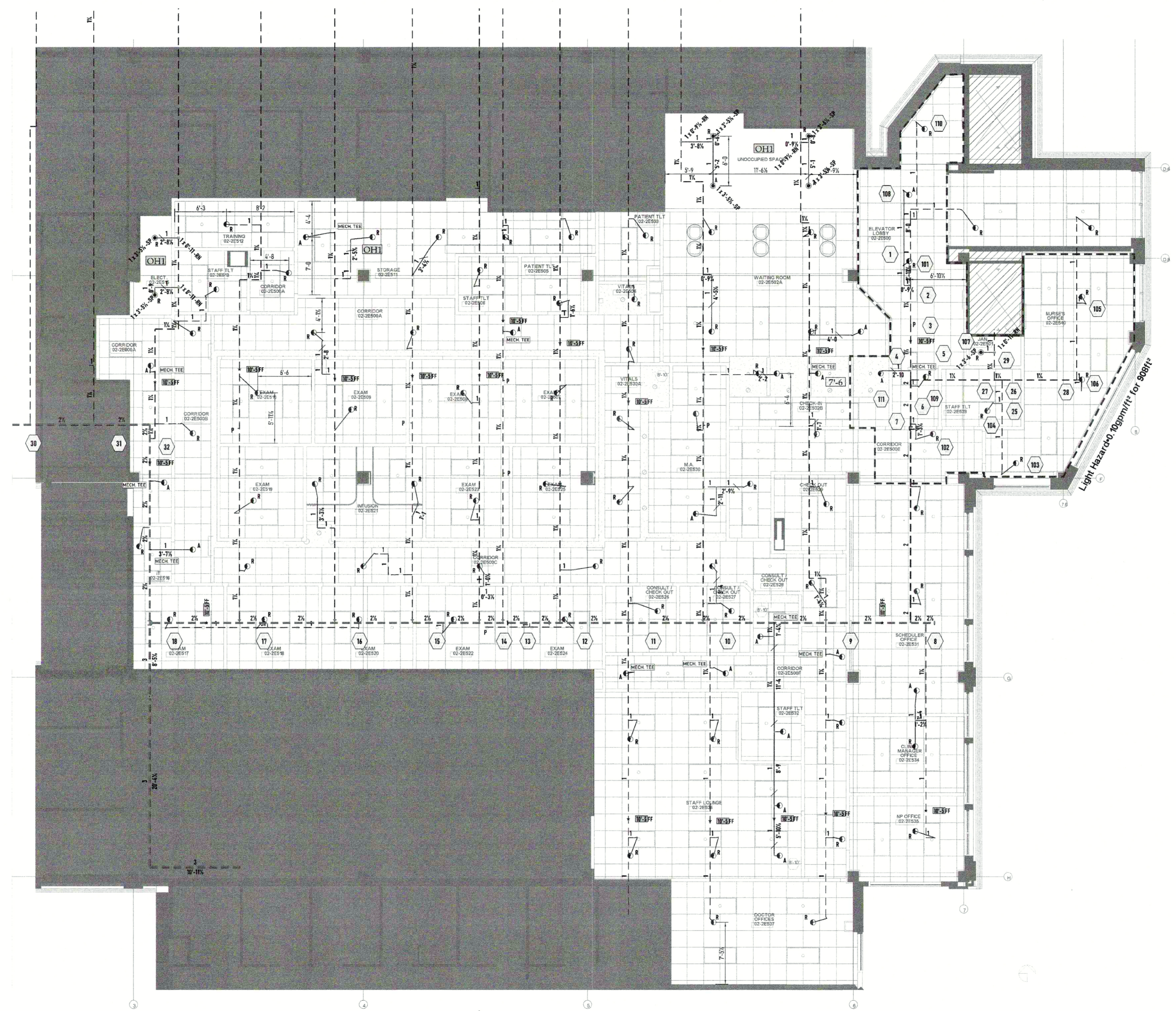


RELEASED FOR CONSTRUCTION
As Noted on Plan Review

Lee's Summit Fire Department
Lee's Summit, Missouri

07/22/2025

Hydraulic Information	
OCCUPANCY CLASSIFICATION	Light Hazard
DENSITY (gpm/ft²)	0.10 for 1500ft² (Actual 908ft²)
TOTAL HOSE STREAMS	100.00
TOTAL HEADS FLOWING	11
K-FACTOR	5.6
TOTAL WATER REQUIRED	313.64
TOTAL PRESSURE REQUIRED	62.757
BASE of RISER (gpm)	213.64
BASE of RISER (psi)	61.574
SAFETY MARGIN (psi)	+40.768 (39.4%)



DATE: _____

REVISIONS:

Symbol	Description
	Hydraulic Reference Points
	Elev. Below Top of Steel
	Elev. Above Finished Floor
	Elev. of Top of Steel
	Coiling Height
	Denotes Hanger Location
	Rise up or down
	FLEXIBLE COUPLING
	HAZARD CLASSIFICATION

SAINT LUKE'S EAST
SUMMIT GL ADDITION

100 NE SAINT LUKE'S BLVD
LEE'S SUMMIT, MO 64086

PE STAMP:

STATE OF MISSOURI
TOM R. HAMPTON
PROFESSIONAL ENGINEER
NUMBER E-10846
7/9/25

AMERICAN
FIRE SPRINKLER
OFFICE: 6750 W 47TH TERR. MISSION, KS 66203
MAIL: P.O. BOX 568 MISSION, KS 66201-0568
913-772-6903
FIRE PROTECTION SYSTEMS - DESIGN
FABRICATION - SALES - SERVICE

PAY _____ SPR _____

REVIEWING AUTHORITY: _____
OWNER / LEE'S SUMMIT, MO

ALL HEADS THIS SHEET: 98

TOTAL HEADS THIS SHEET: 98

DRAWN BY: JONATHAN THOMPSON

DATE: 07-03-2025

REVISION DATE _____

SCALE: AS SHOWN

CONTRACT SK1265

DWG #:

FP01

SHEET: 1 OF 1

2ND FLOOR
FIRE PROTECTION SUBMITTAL